



Concrete placement activities — powerhouse and fish facilities.

PRIEST RAPIDS DEVELOPMENT

Progress Report • 3rd Quarter 1957

Prepared by

HARZA ENGINEERING COMPANY

Construction Engineer for

GRANT COUNTY PUBLIC UTILITY DISTRICT No. 2

HARZA ENGINEERING COMPANY CONSULTING ENGINEERS

DAILY NEWS BUILDING
400 WEST MADISON STREET
CHICAGO 6, ILLINOIS

CABLE ADDRESS "HARZENG CHICAGO"
TELEPHONE RANDOLPH 6-3451

CALVIN V. DAVIS
PRESIDENT

October 16, 1957

COLUMBIA RIVER - PRIEST RAPIDS HYDROELECTRIC PRODUCTION SYSTEM

Quarterly Progress Report

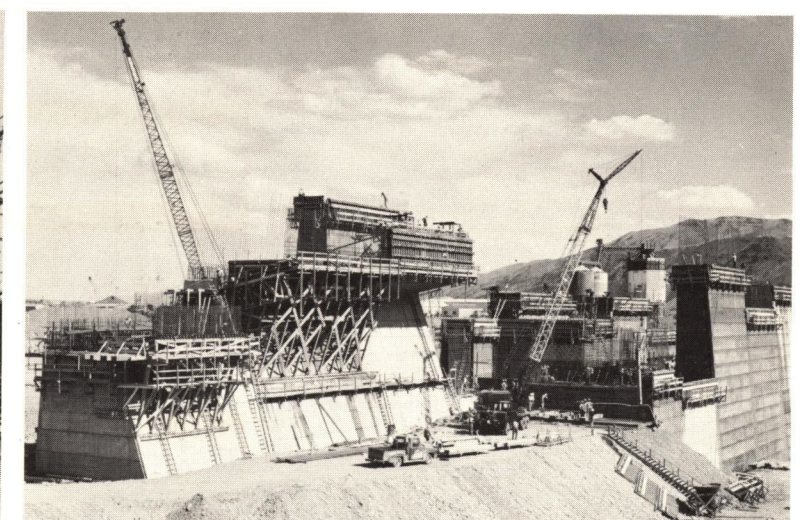
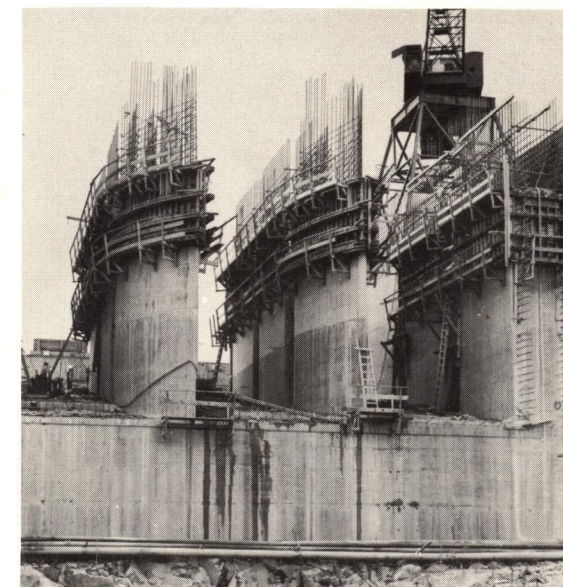
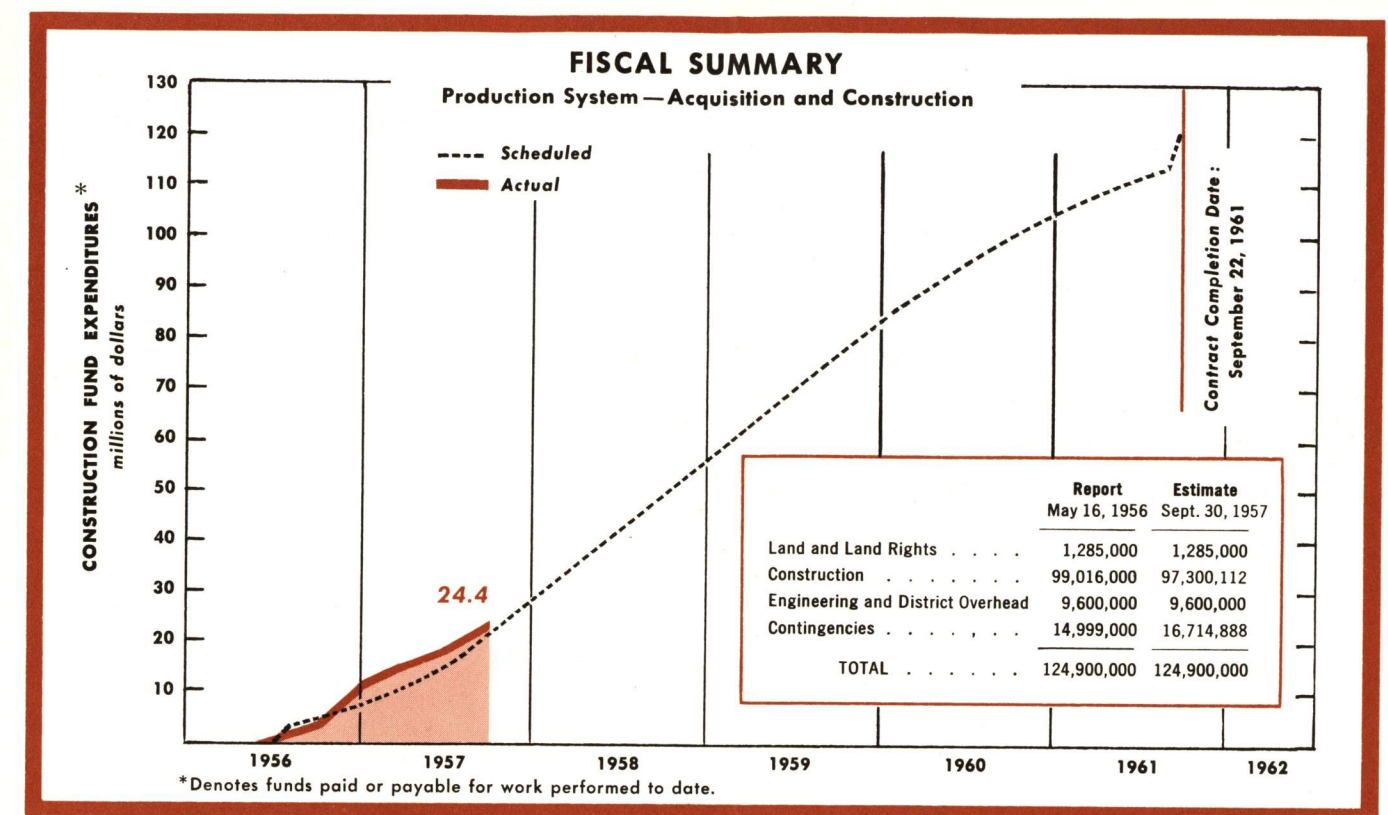
During the Third Quarter of 1957, moderate weather prevailed and was accompanied by a continued reduction of flow in the Columbia River. A low flow of 48,000 cubic feet per second was recorded on September 22, as compared to the year's high of 420,000 recorded in May. With the assistance of these favorable conditions, Merritt-Chapman & Scott Corporation had \$6,600,000 in earnings. This brought overall progress to 24%.

The damaged spillway cofferdam was repaired, and excavation for the spillway was initiated. Excavation was also started for the right bank concrete dam and was completed for the powerhouse and for the left and right embankments. Total excavation has reached 2,100,000 cubic yards.

Concrete placement has increased in tempo in the powerhouse and left bank fish passing facilities and now totals 100,000 cubic yards. Placing of fill material in the left embankment also made excellent progress. Total embankment has reached 1,200,000 cubic yards.

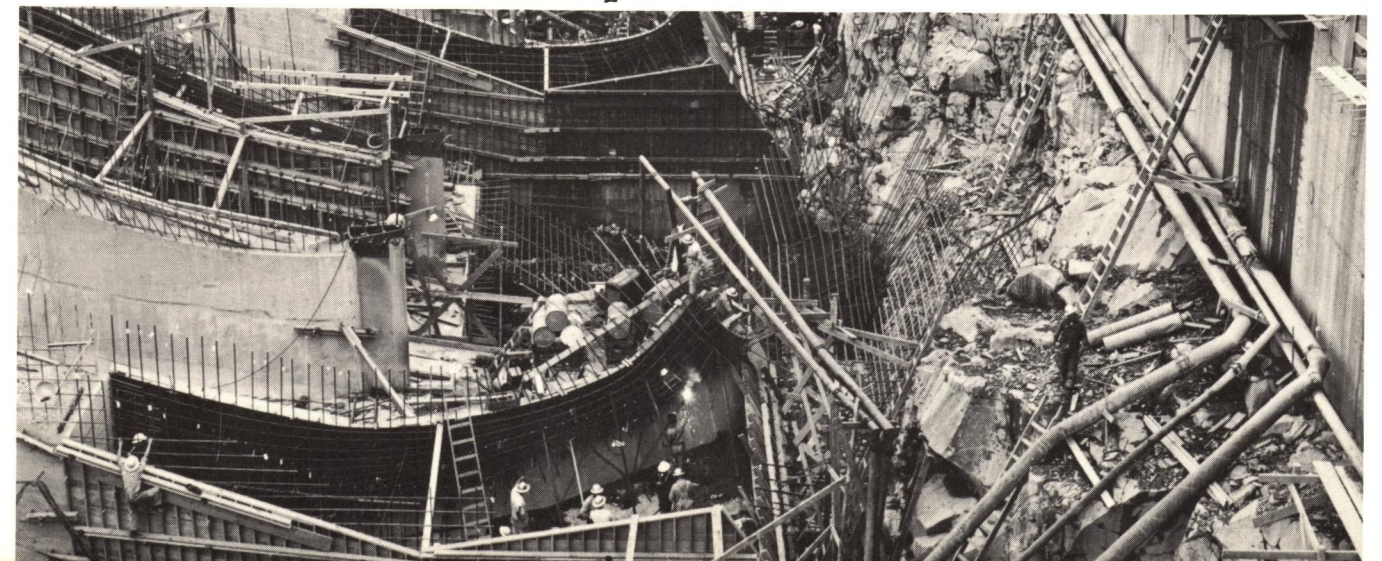
July marked the first complete year of on-site construction activities by the contractor. During this time excellent progress and performance have been attained. The contractor established an accelerated schedule which calls for completion in September 1960, or one year ahead of contract requirements. He was approximately on this accelerated schedule at the end of the quarter.

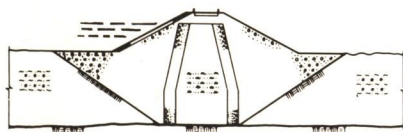
Calvin V. Davis
Calvin V. Davis
President



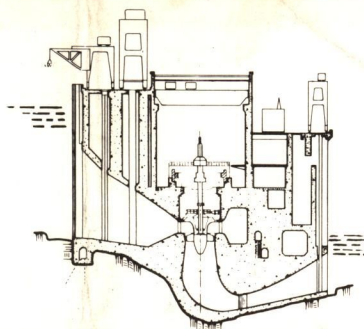
Fish passing facilities — left bank.

Concrete placement activities — powerhouse.

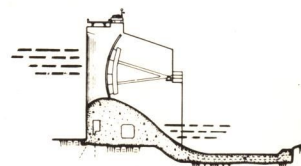




EARTH EMBANKMENT



POWERHOUSE



SPILLWAY

CONSTRUCTION PROGRESS SUMMARY

AS OF SEPTEMBER 30, 1957

 SCHEDULED  FINISHED

Access and Construction Plant

Cofferdams — River Diversion

Excavation

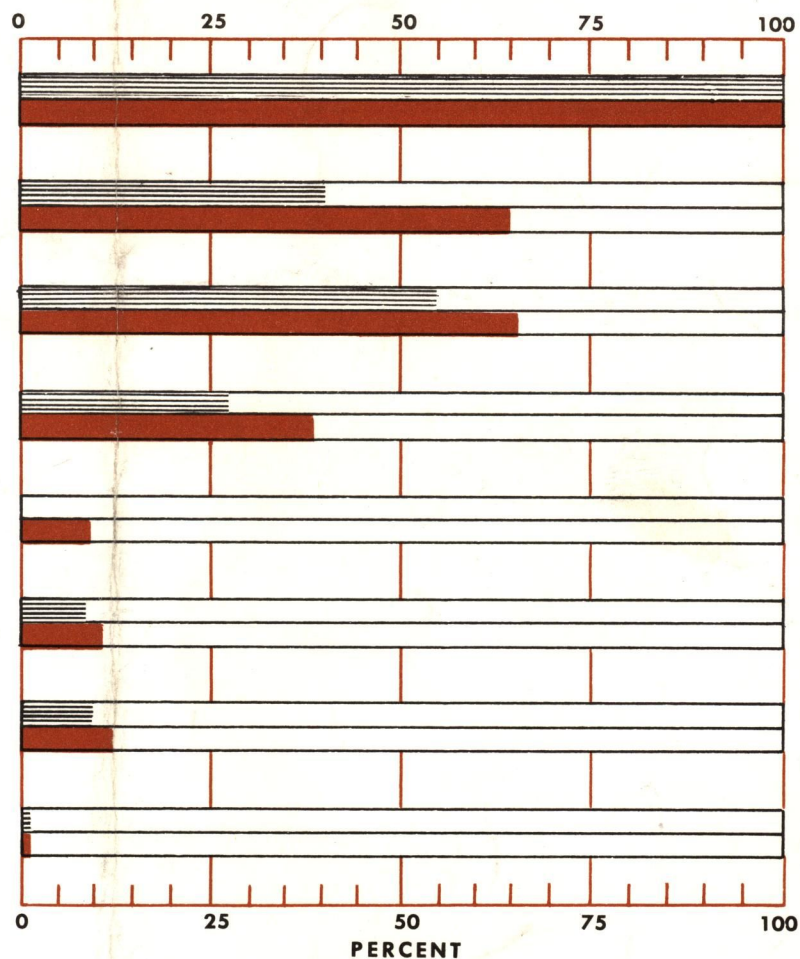
Embankment

Concrete Dam and Spillway

Powerhouse

Turbines and Generator — Manufacture

Turbines and Generator — Installation



POWER GENERATION



unit 1



unit 2



unit 3



unit 4



unit 5



unit 6



unit 7



unit 8