

# HOW TO DISPLAY AND RESPECT OUR FLAG



*The only bond that unites every  
American to every other regardless  
of race, creed or condition in life.*

## SIGNIFICANCE OF SALUTE TO FLAG

**W**HEN we salute the Flag we are not just doing a trivial, conventional act. We are giving outward testimony of our nationality. We are not just making a common-place gesture. We are giving visible expression of our love for our Country, of which there is no greater nor finer in the world. We are not just saluting a beautiful symbol. We are showing our respect for the ideals and traditions, the institutions and principles of which the Flag is the visible token.

When one who knows what the Flag really symbolizes, salutes it, he sees not only a colorful display of red, white and blue, with clustering stars and waving stripes, but in his mind's eye he sees America, a great and mighty Nation, created, united and preserved by the efforts and sacrifices of brave and loyal men and women to whom the ideals and honor of this wonderful Country have been dearer than life itself.

It is, indeed, an honor and a privilege to pay tribute to the Banner of such a Country.

## SIGNIFICANCE OF DISPLAYING FLAG

**W**HEN you exercise care in displaying the Flag correctly you show that you are a patriotic American who cherishes the Flag of his Country and respects and appreciates the ideals and principles which that Flag symbolizes.

When on the Fourth of July, Flag Day (June 14), or any other time, you display the Flag at your home, on your car or elsewhere, you are not just exposing to view a beautiful emblem, but you are really telling the world that you are proud you are an American and that you believe in the Declaration of Independence, the Constitution of the United States and the other things which the Flag represents.

## GENERAL RULES

**T**HE Flag should be displayed only from sunrise to sunset *on buildings and on stationary flagstaves in the open.*

Unless there is some special reason for doing so, the Flag should not be flown in rainy or stormy weather.

It should always be raised briskly and lowered slowly and ceremoniously.

In lowering and in raising the Flag it must never be allowed to touch the ground.

## OCCASIONS ON WHICH FLAG SHOULD BE DISPLAYED

**January 20 (1945, and every fourth year thereafter).** Day President of United States is inaugurated.

**February 12.** Lincoln's Birthday.

**February 22.** Washington's Birthday.

**April 6.** Army Day. (Anniversary of our entrance into World War, 1917.)

**April 14.** Pan American Day.

**Second Sunday in May.** Mothers' Day.

**Third Sunday in May.** "I Am An American Citizenship Day."

**May 30.** Memorial Day. Flag half-masted until noon; full-masted rest of day.

**June 14.** Flag Day.

**July 4.** Independence Day.

**August 19.** National Aviation Day.

**First Monday in September.** Labor Day.

**September 14.** (Anniversary of writing of "Star Spangled Banner" in 1814.)

**September 17.** Constitution Day. (Anniversary of the adoption of the Constitution in 1787.)

**Last Sunday in September.** Gold Star Mothers' Day.

**October 12.** Columbus Day.

**October 27.** Navy Day. (Birthday of President Theodore Roosevelt.)

**The First Tuesday after the First Monday in November in 1944, 1948, etc., every fourth year.** Presidential election.

**November 11.** Armistice Day.

**Last Thursday in November.** (Unless changed by proclamation.) Thanksgiving day.

## SPECIAL RULES

### 1. In a procession with another flag:



*The United States Flag is on the marching right.*

### 2. In a procession with a line of other flags:



*The United States Flag is in front of the center of the line.*

### 3. With another flag against a wall, staffs crossed:



*The United States Flag is on the observer's left, and its staff in front of the staff of the other flag.*

### 4. On a float in a parade:



*The Flag is displayed from a staff.*

### 5. When displayed either horizontally or vertically against a wall, or elsewhere:



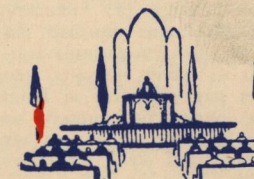
*The blue field is uppermost and to the Flag's own right—that is, to the observer's left.*

### 6. When flown on the same halyard with flags of States, cities, or societies:



*The United States Flag is at the peak.*

### 7. When displayed in a church:



*If in the chancel, the United States Flag is at the clergyman's right as he faces the congregation, and the church or other flag is at his left.*

*If outside the chancel, the United States Flag is at the right and front of the congregation as it faces the clergyman, and the State or other flag is at their left.*

8. When the United States Flag and flags of other nations, States, cities, or societies are flown from adjacent staffs:



The United States Flag is on the right of the line—that is, on the observer's left.

#### NOTES

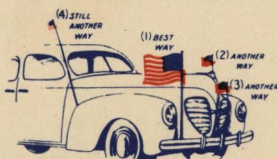
- In cases like the above the United States Flag is hoisted first and lowered last.
- When flown with flags of other nations, all staffs should be the same height and the flags of approximately equal size.
- International usage forbids the display of the flag of one nation above that of another nation in time of peace.

9. From a staff projecting horizontally or at an angle from the window-sill, balcony, or front of building:



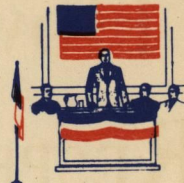
The blue field goes clear to the peak.

10. When displayed on an automobile:



BEST WAY (1)—Flagstaff fastened to bumper bracket. (Way Flag is attached to car of President of the United States.) ANOTHER WAY (2)—Small flagstaff fastened to radiator ornament. ANOTHER WAY (3)—Small flagstaff fastened to grill work in front of car. ANOTHER WAY (4)—Very small flag fastened to top of aerial.

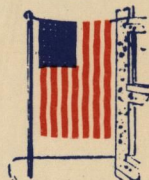
11. When used on a speaker's platform:



(a) If displayed flat, the Flag is above and behind the speaker.

(b) If flown from a staff, the Flag is in the position of honor, at the speaker's right.

12. When suspended over a sidewalk from a rope, extending from a house to a pole at the edge of the sidewalk:



The Flag is hoisted a part of the way out from the building, toward the pole, blue field first.

### UNVEILING OF STATUE OR MONUMENT

When used in connection with the unveiling of a statue or monument, the Flag must not be allowed to fall to the ground upon the unveiling, but should be carried aloft to wave out, forming a distinctive feature during the remainder of the ceremony. The Flag must never be used for covering the statue or monument. Red, white and blue bunting or other suitable cloth should be used.

[ 3 ]

### CAUTIONS

- Do not permit disrespect to be shown to the Flag of the United States.
- Do not dip the Flag of the United States to any person or anything. The regimental color, State flag, organization or institutional flag will render this honor.
- Do not display the Flag with the union down except as a signal of distress.
- Do not place any other flag or pennant above, or, if on the same level, to the right of the Flag of the United States.
- Do not place any object or emblem of any kind on or above the Flag of the United States.
- Do not fasten the Flag in such manner as will permit it to be easily torn.
- Do not drape the Flag over the hood, top, sides or back of a vehicle, or of a railway train or boat.
- Do not use the Flag as a portion of a costume or of an athletic uniform.

### NEVER DRAPE FLAG

DO not use the Flag as drapery in any form whatsoever. Use bunting of red, white and blue.



Always arrange the bunting with the blue on top, or to the observer's left and the red below or to the observer's right. The reason for this is that the blue, being the color of the union of the Flag, is the "honor color," and should therefore come first, either horizontally or vertically.

(NOTE—A simple rule of thumb for displaying bunting horizontally is this: Blue is the color of the heavens, and should therefore go above. Red, in the popular mind, is the color of Hell and should therefore go below.)

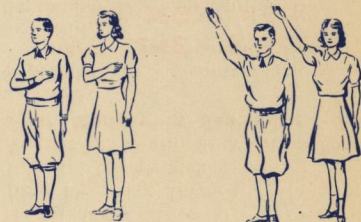
### PLEDGE TO THE FLAG

THE Flag Code prescribes that in pledging allegiance to the Flag, the approved practice in schools, which is suitable also for civilian adults, is as follows:

Standing, with the right hand over the heart (Fig. 1), all repeat together:

"I pledge allegiance to the Flag of the United States of America and to the Republic for which it stands, one Nation indivisible, with liberty and justice for all."

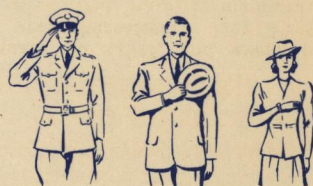
At the words "to the Flag," the right hand is extended, palm upward, toward



the Flag (Fig. 2), and this position is held to the end. After the words, "justice for all," the hand drops to the side.

### SALUTING THE FLAG

DURING the ceremony of hoisting or lowering the Flag or when the Flag is passing in a parade or in a review, all persons present should face the Flag, stand at attention and salute. Those



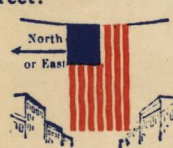
present in uniform should render the right hand salute. When not in uniform, men should remove the headdress with the right hand and hold it at the left shoulder, the hand being over the heart.

Women salute by placing the right hand over the heart.

The salute in a moving column is rendered at the moment the Flag passes.

[ 5 ]

13. When displayed over the middle of the street:



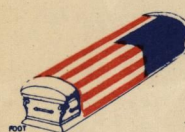
The Flag is suspended vertically, with the blue field to the north in an east and west street, or to the east in a north and south street.

14. In a group of flags of States, cities or societies, displayed from staffs:



The United States Flag is at the center or at the highest point of the group.

15. When used to cover a casket:



The blue field of the Flag is at the head of the casket and over the left shoulder of the deceased.

#### NOTES

- The casket should be carried foot first.
- The flag must not be lowered into the grave, nor allowed to touch the ground.

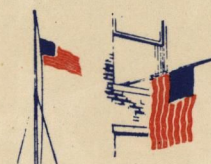
[ 4 ]

16. To indicate mourning when the Flag is fastened to a small staff, as when carried in a parade:



Two streamers of black crepe of suitable length are attached to the spear head, allowing the streamers to fall naturally.

17. To indicate mourning when the Flag is flown from a stationary staff:



The Flag is placed at half-staff.

#### NOTES

- When flown at half-staff the Flag should be hoisted to the peak for an instant and then lowered to the half-staff position. Before being lowered for the day, the Flag should be raised again to the peak.
- The Flag should not be both half-masted and dressed with crepe, nor should it ever be tied in the middle with crepe to indicate mourning.
- The position of the Flag at half-staff is not necessarily halfway down the staff, as the term indicates, but it is at a suitable distance below the peak of the staff, depending on the height of the staff and the size of the Flag.

### QUESTIONS

The numbers in parentheses after the questions are those of the panels in which the answers are to be found.

- (a) When we salute the Flag are we just doing a trivial, conventional act? (b) What three things are we doing? (1)
- When one who knows what the Flag really symbolizes salutes it, what does he see in his mind's eye? (1)
- (a) When you exercise care in displaying the Flag correctly what do you show? (b) When you display the Flag on the Fourth of July, Flag Day, or any other time at your home, on your car or elsewhere, what are you really doing? (1)
- Between what hours should the Flag be displayed on buildings and on stationary flagstaffs in the open? (1)
- Should the Flag be flown in rainy or stormy weather? (1)
- How should the Flag always be raised and lowered? (1)
- What precaution regarding the ground should be exercised on lowering and raising the Flag? (1)
- On what occasions should the Flag be displayed? (1)
- Where is the United States Flag carried: (a) In a procession with another Flag? (2) (b) In a procession with a line of flags? (2)
- Where is the United States Flag placed: (a) With another flag against a wall, with the staffs crossed? (2) (b) When flown on the same halyard with flags of States, cities or societies? (2) (c) When displayed in a church: (I) If in the chancel? (II) If outside the chancel? (2) (d) (I) When the United States Flag and flags of other nations, States, cities or societies are flown from adjacent staffs? (II) When is the United States Flag hoisted and lowered? (III) How should the relative height of the staffs and size of the flags compare? (IV) May the flag of one nation be displayed above that of another in time of peace? (3) (e) On an automobile? (3) (f) When used on a speaker's platform: (I) If displayed flat? (II) If flown from a staff? (3) (g) In a group of flags of States, cities, or societies, displayed from staffs? (4)
- How is the United States Flag displayed: (a) On a float in a parade? (2) (b) When suspended over a sidewalk from a rope, extending from a house to a pole at the edge of the sidewalk? (3) (c) Over the middle of the street? (4)
- What is the position of the blue field of the Flag: (a) When the Flag is displayed either horizontally or vertically against a wall, or elsewhere? (2) (b) When the Flag is displayed from a staff projecting horizontally or at an angle from the window-sill, balcony or front of a building? (3) (c) (I) When the Flag covers a casket? (II) How is the casket carried? (III) Should the Flag be lowered into the grave or allowed to touch the ground? (4)
- How is mourning indicated when the Flag is: (a) Fastened to a small staff, as when carried in a parade? (4) (b) Flown from a stationary staff? (4)
- What is the rule regarding the use of the Flag in connection with the unveiling of a statue or monument? (3)
- Should the Flag ever be used as drapery? (5)
- How should red, white and blue bunting be arranged, and what is a simple rule of thumb to remember in this connection? (5)
- What are the rules regarding the following: (a) Placing any other flag or pennant above or to the right of the Flag of the United States; (b) the Flag touching the ground or floor or trailing in the water; (c) placing any object or any emblem of any kind on or above the Flag; (d) fastening the Flag in such manner as will permit it to be easily torn; (e) draping the Flag over the hood, top, sides, or back of a vehicle, railroad train, or boat; (f) carrying the Flag flat or horizontally; (g) using the Flag as a portion of a costume or part of an athletic uniform; (h) embroidering the Flag upon cushions, handkerchiefs, or printing it on napkins or boxes; (i) putting lettering of any kind on the Flag; (j) using the Flag in any form of advertising, or fastening an advertising sign from the pole or staff from which the Flag is flown; (k) displaying, using, or storing the Flag in such a manner as would permit it to be easily soiled or damaged? (Cautions: 5.)
- Should torn or badly soiled Flags ever be displayed? (5)
- What should be done when a Flag is in such condition that it is not fit to be displayed? (5)
- (a) What is the correct way for the Flag to be saluted by men in uniform? (b) By men not in uniform? (c) By women? (5)
- When is the salute in a moving column rendered? (5)

[ 6 ]



EVERY

STAR

A

STATE

★

EVERY

STATE

A

STAR

PICK

OUT

THE

STAR

OF

YOUR

STATE