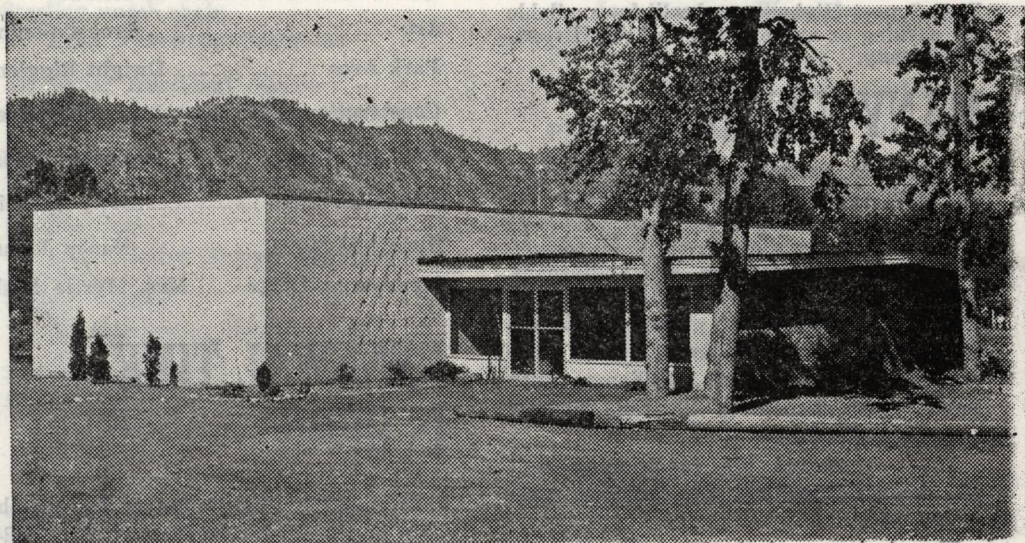


CHELAN COUNTY HISTORICAL SOCIETY NEWS BULLETIN



VOLUME IV — NUMBER 1

FALL, 1962

Work Started on New Addition To Museum

Another forward step in the continuing growth of the Chelan County Historical Society was taken with the pouring of the footings for the new wing of the Museum on November 14th. The new wing will be the same size as the main part of the original building, 32 feet wide by 72 feet long, two stories, and of fireproof construction throughout. The architects are Fraley & Leighton.

The wing was planned because the available display and storage space is inadequate for the material already owned by the Society, and several new collections have been offered when display space is available.

Work will go forward as fast as finances and volunteer help are available.

PROPERTY ACQUIRED

The Trustees have just announced the purchase of the lot directly east of the museum from Mr. and Mrs. C. C. Smith. The 160 by 196 foot lot fronts on East Sunset Highway and will be available for parking or any other use of the Historical Society.

MANY VISITORS

The past season was a very successful one with about 15,000 people visiting the museum. The volunteer hostesses who kept the museum open daily from 10:00 to 5:00 under the direction of Mrs. Walter Burbank were: Louise Orcutt, Edna Hall, Edna Ridley, Stella MacArthur, Bessie Andrews, Laura Tigner, Ione Williams, Gladys Simonson, Erma Karns, Ruth Williams, Ruth Baker, Anna Simonson, Gertrude Nedrow and Dora Gavin.

The refrigerated air conditioning unit was installed making the building more comfortable.

The picnic area in back of the museum was prepared and 10 picnic tables were built.

Two art exhibits were held — the second annual Regional Art Exhibit in May and Ernest Tonk's exhibit "Scenes of the Old West" in July and August. Both were well attended. The artists were honored with receptions at the museum.

-WANTED-

Pot-Bellied stove
Small antique table
Round Oak stove
2 antique beds
3 antique chairs of the style used around 1880

NEEDED

The recent gift of Capt. Alexander Griggs' photo and binoculars and the flag from the Steamer W. H. Pringle gives us a good start on material for an exhibit on steamboating on the Columbia. If you have any artifacts pertaining to early steamboating that you would donate to the museum, the gift would be appreciated.

New Officers

New officers of the Historical Society elected for the coming year are: President, Robert E. Eddy; Vice President, Dr. Russell Congdon; Secretary-Treasurer, John McDonald. Other trustees are Jim Wilson and Les Jarvis. These officers are assisted by a Board of Advisors as follows:

Art Ernest Caviness
Park Area Dwight Riggleman
Construction Bev Spears
Hostess Chmn. Velma Burbank
Historical Sites Betty Schneider
Historical Signs Nancy Johnson
Member at Large Mrs. Myrtle Fasken

RENEWAL TIME IS HERE

It is again time to renew our membership in the Historical Society for 1962-63. We urge you to send in your dues as soon as possible to be able to take advantage of the benefits attached. Annual dues are \$2.00; or, you can obtain a life membership for \$100. In addition to the satisfaction of knowing that you are helping to preserve and mark the history of your county, you, as a member of the Chelan County Historical Society, are entitled to receive this news bulletin and a 15% discount on all books, jewelry, souvenirs, and postcards purchased at the museum.

There is still time to honor a pioneer or pioneer couple through the purchase of a special memorial plaque. With a contribution of \$100 you can have one name (or a couple as Mr. and Mrs.) engraved on a dated plaque signifying the year they came to Central Washington. The Historical Society proudly displays these plaques in the lobby of the museum. Any contributions for a pioneer will be used solely in financing the new wing.

Send your dues to the treasurer, John McDonald at Cashmere.

Articles Newly Acquired

Book - History of Wenatchee
John A. Gellatly, Wenatchee

Leather covered trunk
Sterling watch chain
Fred Heberlein, Cashmere

10c paper fractional currency
Richard Carroll, Wenatchee

Brass spittoon
Cashmere Valley Bank

Leather bag
Mrs. Carrie Shoun, Cashmere

2 Iron Kettles
M. Beerbower, Seattle

2 Indian baskets
2 pair Indian moccasins
Mrs. Fred Kemp, Wenatchee

Photograph of Capt. Alexander Griggs
Flag from river Steamer W. H. Pringle
Capt. Griggs' Binoculars
Jack Scaman, Wenatchee

Photograph of Pipestone Quarry, Minn.
Mrs. Gertrude Nedrow, Cashmere

Photo of Chief Moses
Photo of Indian Chief, Dr. Whirlwind
Mrs. Carl Shantz, Wenatchee

Mug "Old Sleepy Eye"
Mrs. Eli Freije, Cashmere

Set of 2 books, Hist. of Wash.
Bob Hickey, Cashmere

Section of pioneer barbed wire fence
Arthur H. Pohlman, Wenatchee

Arrangements for school groups to have guided tours of the museum may be made by phoning Velma Burbank, St 2-6732 for an appointment.



Work Begins

LADIES MEN & BOYS

For the entire family

SKI CLOTHES HEADQUARTERS

Frankies Apparel

CASHMERE

TEEN-AGERS

INFANTS

Compliments of . . .



"Home of RED CARPET Service"

Compliments of . . .

**BONDSTOCK
CORPORATION**

Investment Securities

Don W. Fegley

Cashmere

Regional Manager

Wash.

Compliments of . . .

VALLEY PHARMACY

Ph. 2-6771

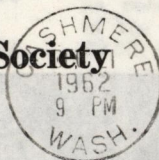
Cashmere

RON & WAYNE

Printed by the Cashmere Valley Record

Chelan County Historical Society

CASHMERE, WASHINGTON



*Click Relander
1212 N. 32nd Ave
Yakima
Wash*