

The Yakima Chamber of Commerce

and the

Western Pine Association

Sponsoring the dedication of the
Yakima District Tree Farm Units of the



CASCADE LUMBER COMPANY

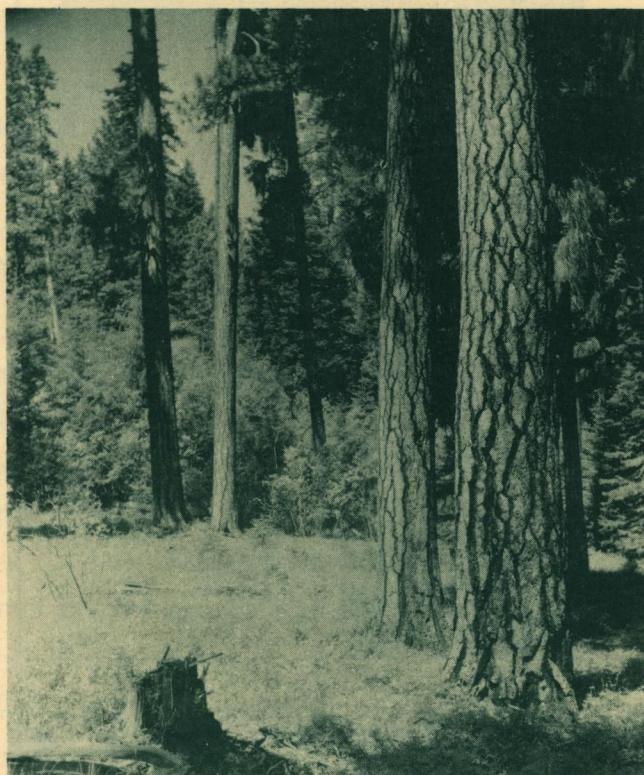
on July 23, 1953, from 11:00 a. m. to 2:30 p. m. at the
Cascade Recreation and Forestry Camp on Wenas Creek.

The Yakima Chamber of Commerce

and the

Western Pine Association

cordially invite you* to attend the dedication of the
Yakima District Tree Farm Units of the

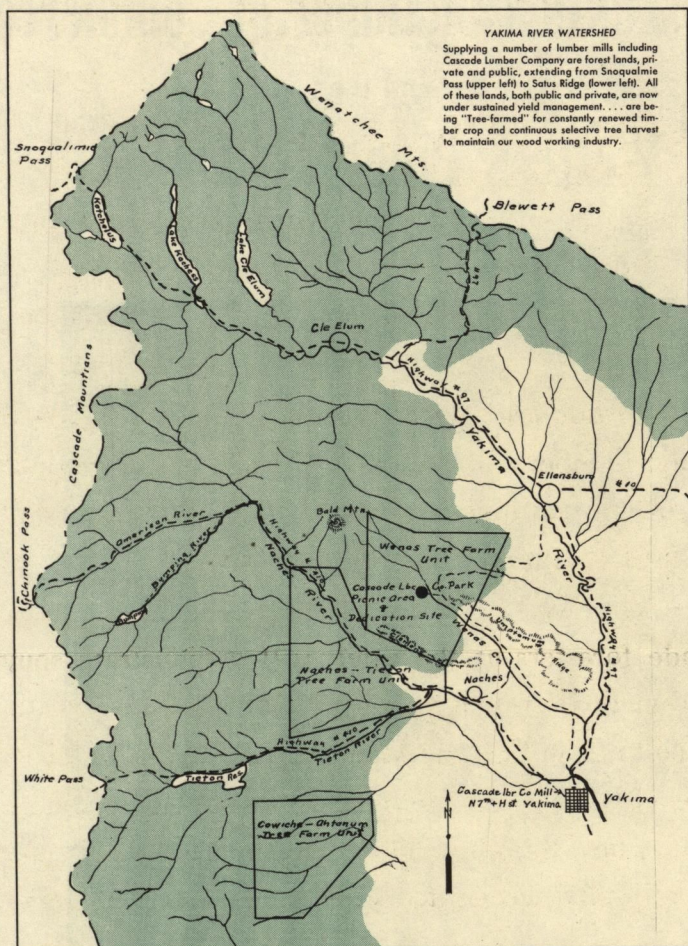


CASCADE LUMBER COMPANY

to be held on July 23, 1953, from 10:30 a.m. to 2:30 p.m.
at the Cascade Recreation and Forestry Camp on Wenas
Creek. Luncheon at the camp at 12 noon. (Allow one hour
driving time from Yakima.)

* *And your wife*

(Please reply)



Tree Farm Demonstration

This camp is within Cascade Wenas Tree Farm Unit, one of three Yakima District Tree Farm units aggregating 50,000 acres to be dedicated in this one ceremony.

Near the camp are several forestry research projects of Cascade Lumber Co. intended to learn better methods for growing continuous crops of trees, thus providing continued operation of the lumber plants.

Cascade foresters at the camp will demonstrate some of the methods which go with "Tree Farming" in the pine belt of the Cascade Mountains . . . how pine bark beetle kills trees . . . how "false mistletoe" damages trees . . . how thinning out dense stands of young pines brings greatly accelerated growth of those remaining.

How to Get to the Cascade Recreation-Forestry Camp

From Yakima, drive to Selah, turn right at the stop light, turn left at the first intersection, follow the old Wenas road 26 miles from Yakima to the big pine tree (now a stump), take the middle road 3 miles to the camp. From Naches, take the Wenas cut-off over the hill from the P.P. & L. Co. drop plant to the Wenas road. Forks on both routes will be posted with green arrows.

Following the luncheon those who are interested will be shown how these and other Tree Farming problems are being studied at the Cascade forestry research plots.

Pleasant for Week-end Picnics

This site was cleared and set aside as a public camp ground in 1949. It is 29 miles from Yakima, the last 3 miles being over Cascade logging road. Rustic tables, benches, camp stoves, sanitary facilities are provided. A play field has been cleared. Further improvements are being made each year.



Tree Farming Defined

A Tree Farm is an area of forest land devoted primarily to the continuous growth and production of merchantable forest products under consciously applied forest practices. It applies to privately owned forest land. Owners of timber lands are eligible to apply for registration of forest areas as a Tree Farm, if they meet the following requirements:

1. Assure a willingness to maintain the land designated for the production of forest crops;
2. Provide reasonable protection from fire, insects, disease, and from danger by excessive grazing;
3. Harvest timber crops from the area in a manner which will assure future crops.

Registration in the National Tree Farms System is under the sponsorship and direction of the National Lumber Manufacturer's Association.

"The magnificent forests of Washington have been our greatest asset since the days of the first settlers pioneered our lands. Sound public policy of the State of Washington demands that its forest resources be protected and conserved to the fullest degree compatible with the full realization of such resources as a commercial and economic asset of the state. We must keep our lands productive by seeking to maintain continuous growth of timber on all lands suitable for forest use. Our economic life has been and will continue to be bound closely to our vast forests. Forests will continue to preserve our economy in the future if we take the necessary steps to see that they are properly managed and adequately protected. Our state gave the nation the slogan "Timber is a Crop." We must plan our forest management on that basis. With proper management the people of Washington will always be able to reap an ample supply of forest products, to continue to enjoy our wonderful recreational areas and to have an adequate supply of pure water for our cities and towns."

GOVERNOR ARTHUR B. LANGLIE
in "American Forests" May, 1943

PROGRAM SPONSORS

Yakima Chamber of Commerce
Western Pine Association

Program

CASCADE LUMBER COMPANY TREE FARM DEDICATION

July 23, 1953 — 11:00 A.M.

| | |
|--|---|
| Master of Ceremonies..... | Homer Splawn Chairman, Agriculture Committee, Yakima Chamber of Commerce |
| Group Singing—"America"..... | Stanley Lebens Yakima Insurance Associate, Yakima |
| Invocation..... | Dr. Mark Koehler Presbyterian Church, Yakima |
| Welcome and Introduction of Guests..... | P. L. "Pappy" Cheshire President Yakima Chamber of Commerce |
| Address: "A Local Farmer's Interest in Tree Farming"..... | Ed Brown Wenas Valley Orchardist and Chairman Wenas Soil Conservation Dist. |
| Solo—"Trees"..... | Maryellen Dumbolton |
| Introduction of Speaker..... | Gilbert Burns Mayor City of Yakima |
| Address by Principal Speaker..... | Don Eastvold Washington State Attorney General |
| Presentation of Tree Farm Certificates and Unveiling of "Tree Farm" Sign..... | U. R. Armstrong President of Halleck and Howard Lumber Co., Winchester, Idaho, and President of Western Pine Association |
| Acceptance and Remarks..... | J. D. Bronson President Cascade Lumber Company |

Picnic Lunch—12 Noon

After lunch — for those who wish to stay — forestry exhibits, forest fire fighting demonstration, etc.

Pleasant for Week-end Picnics

This site was cleared and set aside as a public camp ground in 1949. It is 29 miles from Yakima, the last 3 miles being over Cascade logging road. Rustic tables, benches, camp stoves, sanitary facilities are provided. A play field has been cleared. Further improvements are being made each year.

