

TO GRAND  
COULEE



SUN LAKES  
STATE PARK

# Ephrata

**A NEW LAND OF  
OPPORTUNITY**

SOAP LAKE  
mineral water  
recreation  
area

TO SPOKANE

STATE HIGHWAY NO. 7

GREAT NORTHERN MAINLINE

**EPHRATA**

MUNICIPAL  
AIRPORT

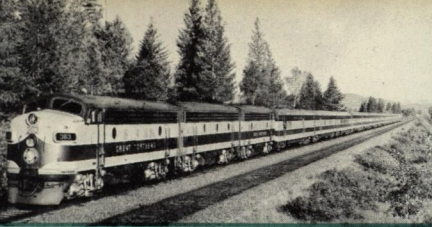
**... the Columbia Basin**

TO MOSES LAKE  
AND PASCO

LARSON  
AIR FORCE  
BASE







## Railroads

Ephrata is served by the main line Great Northern Railroad. Daily freight and passenger service connects Ephrata with the Pacific Northwest and the nation — moving needed products in and Columbia Basin produce out to the world.



## Airlines

The Ephrata Municipal Airport is the regularly scheduled stop of West Coast Airlines with flights each way — east and west — daily. The old Ephrata air base, where the airport is located, also has warehouses and industrial buildings, owned by the city, for lease to firms interested in settling in the Columbia Basin.



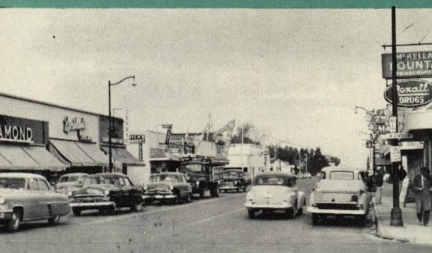
## Trucking

Trucking is another major link between Ephrata, the Columbia Basin and the rest of the Pacific Northwest. Ephrata, on a network of the finest highways in Washington, is served by four major trucking lines and several local lines. Improvement of state highways in the area is constantly making Ephrata more important in the highway transportation picture.



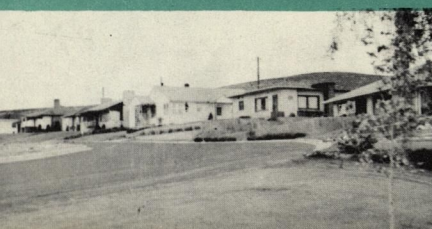
## Industry

Diversified industry is rapidly becoming interested in Ephrata and the Columbia Basin for the sources of cheap power, room for expansion, growing market areas and crops grown for processing. Largest influx to date has been potato grading, bean and pea processing, warehousing and other agricultural industry.



## Business

Modern business buildings, fine shops and stores, all make Ephrata as up-to-date a city as can be found anywhere. Nearly 400 well-equipped businesses serve Ephrata and a trade area of more than 25,000 persons. Competition is keen, keeping prices on a fair and level basis.



## Homes

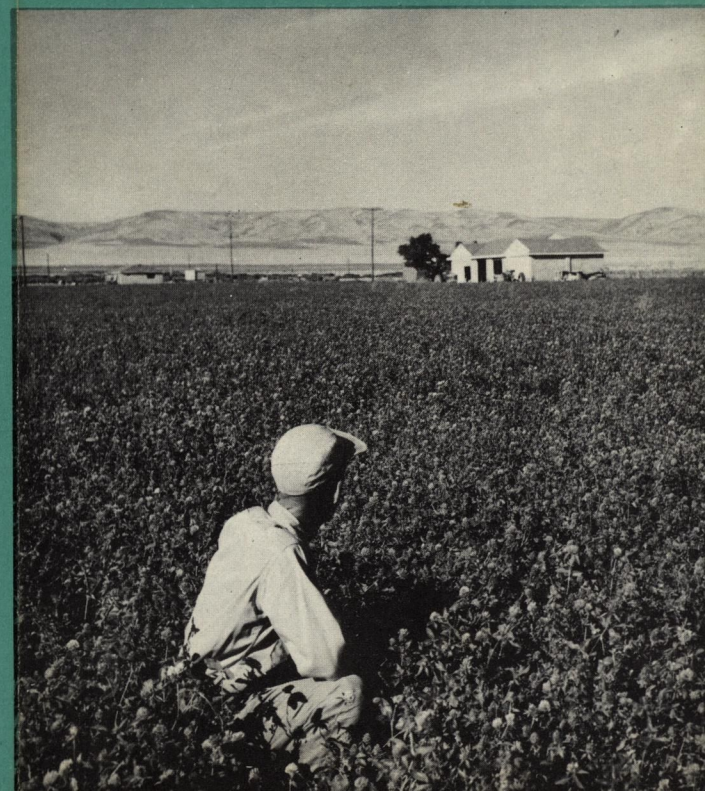
Ephrata is a city of fine homes and residential areas. The city is young and new. In 1944 the population was about 1,500. Today there are more than 7,000 people living in the city in new and beautiful homes. There are no streets unpaved. Fine parks, schools and churches round out a pattern of "gracious living."

# Agriculture

The Columbia Basin Project, the greatest irrigation project of them all, will bring nearly a million acres of land into agricultural production when it is completed.

Rich soil produces excellent yields of a wide variety of crops. Long growing seasons — 180 days and more — make the area a farmer's paradise.

More than 100,000 acres of land is under irrigation now and more is coming in at the rate of 60,000 acres per year. Further information of the Columbia Basin agricultural picture may be obtained by writing the U. S. Bureau of Reclamation, Columbia Basin Project, Ephrata, Washington or the Ephrata Chamber of Commerce.





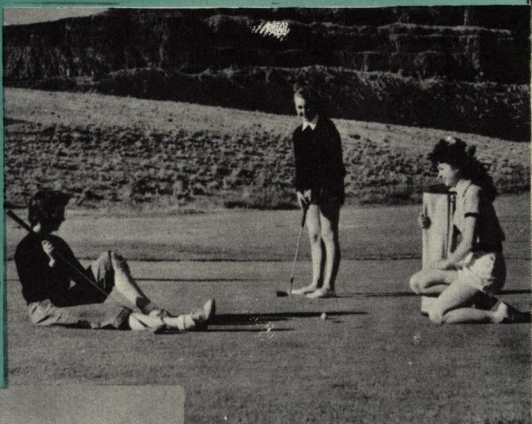


## Fishing

The beautiful Sun Lakes chain — Blue Lake, Park Lake, Deep Lake and many others — offer to the angler some of the best fishing in the state within a few minutes' drive of Ephrata. Besides the natural waters, many new lakes formed by the irrigation system have become popular sporting grounds. Rainbow trout, bass and crappie fishing is at its best.

## Golfing

Two beautiful nine-hole golf courses within a few minutes of Ephrata, complete with clubhouses and a background of high rugged cliffs, invite a few hours of relaxing play. One course is within four miles of Ephrata, the other is at Sun Lakes State Park, a popular spot for weekend play.



## Boating

For just plain family fun, boating is hard to beat. Resorts on several of the beautiful lakes in the Sun Lakes chain near Ephrata have boats for rent at low cost. For the more hardy and the more competitive, sailboating, water skiing and speedboat racing are popular sports.

## Hunting

Given a dog, his favorite gun, a crisp autumn morning and the hunter's lot is supreme. Water fowl, both ducks and the big Canadian Honkers, and many variations of pheasant and upland birds, are popular game birds of the area. Deer are plentiful in the coulees near Ephrata each fall.



# Ephrata

**A NEW LAND OF OPPORTUNITY**



**EPHRATA CHAMBER OF COMMERCE**  
EPHRATA, WASHINGTON