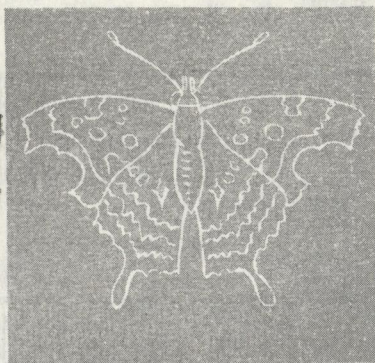


A guide to your Los Angeles County MUSEUM of NATURAL HISTORY



Since its founding in 1910, this Museum has been owned and maintained by the people of Los Angeles County. It is under the administrative jurisdiction of a Board of Governors appointed by the County Board of Supervisors. Now in progress is a long range expansion program, which entails closing some halls and galleries in preparation for the installation of new exhibits. The Museum will do everything possible to hasten completion of these new galleries. We trust our present visitors will find much of interest in the halls now open, and will return to see the new installations as they are completed.

Dr. Herbert Friedmann, Director

GROUND FLOOR

Industrial Technology: Historic engines, mechanical inventions.

History of Transportation: Prehistoric times to the present.

Vroman Gallery: Southern California and the southwest as photographed 50 years ago.

California Hall: Exploration (1542-1780), Missions (1769-1834), Ranchos (1834-1848), American (1848-1900).

Time and Space: Early scientific instruments.

Westward Movement: Expansion in the period 1803-1870.

Hall of Plains Indians.

Hall of Western Indians.

FIRST FLOOR

Colonial Hall: Antiques of Revolutionary times.

Hall of History: Changing exhibits.

Hall of African Mammals: Habitat groups.

Hall of North American Mammals: Habitat groups.

History of Computation: Development of mechanical and electronic devices.

Hall of Evolving Life: The story of biology illustrated.

Hall of Arms and Armor: Technological Development.

Hancock Hall: Fossil mammals, birds and plants from the Rancho La Brea deposits.

Hall of Minerals: From world-wide localities.

Hall of Pacific Islands Ethnology: Cultures of Micronesia, Melanesia, Polynesia, Australia

Hall of Southern California Geology: Ores, gem stones, illustrations.

Hall of Pre-Columbian Archeology. Arts and crafts of areas between Mexico and Peru. Also West Mexico, Gulf Coast and Central America, in period 2500 BC-1500 AD. Maya, Toltec, Aztec, Inca, Pre-Inca, Zapotec.

SECOND FLOOR

Hall of Exotic Mammals: Unusual animals and habitat groups.

Hall of Small Mammals and Birds: Covering Southern California.

Hall of African Ethnology: Masks, arms, apparel, ceremonial objects.

Hall of Insects: Complete depiction of insect families, life cycles, habitats, life patterns and relationship to other life forms.



THE MAP



On the reverse of this page is a detailed map of the Museum floors open to the public. Certain areas are shaded. These are the halls

and galleries now closed due to installation of new exhibits. The titles indicate the nature of the future displays.

IN PREPARATION

Mesozoic "Hall of Dinosaurs." Six large dinosaurs; flying reptiles, mosasaur and plesiosaurs.

Cenozoic Hall of Fossil Mammals, Birds and Reptiles.

Hall of Invertebrate Zoology.

Hall of Fossil Marine Vertebrates. Stressing importance of Southern California as source of ancient faunas.

Hall of Invertebrate Fossils. With dioramas of ancient sea life.

California Botany Hall.

Botany Hall. Plant life history, classification and other aspects.

Hall of Reptiles and Amphibians. First exhibit by the Museum in this field.

Biology of Birds and Mammals.

American History Gallery. Exploration, settlement, expansion and the Westward movement from 1450 to 1890.

Hall of Los Angeles City and County. Displays of historic materials.

Hall of Marine Zoology.

Western and California Art. Illustrations of the early Western scene.
History of Photography.

GENERAL INFORMATION

Hancock Park: Also county-owned is the 23-acre Rancho La Brea site on Wilshire Blvd. now known as Hancock Park. From this came the world-renowned Ice Age fossil collection as displayed in Hancock Hall. The park has an Observation Pit with fossil bones in place. Life-size replicas of many extinct animals are to be placed near the lake pit and restored Pleistocene meadow.

Visiting Hours/Directions: Both the Museum in Exposition Park and Hancock Park Observation Pit are open daily from 10 a.m. to 5 p. m., except for Mondays, Thanksgiving Day and Christmas Day. The Museum in Exposition Park, 900 Exposition Blvd., is reached via Harbor Freeway. Off ramps at Exposition Blvd. and at Santa Barbara Ave. Hancock Park is at 5801 Wilshire Blvd. in the "Miracle Mile."

MUSEUM ALLIANCE: Participation in many of the Museum activities is made available through membership in the Museum Alliance. Film showings, trips, publications and special discount prices for events and bookshop materials are part of the membership benefits. Further information may be obtained by calling Mrs. Fran Kellough, administrative secretary, at 746-0410 or 749-3631.

SECOND FLOOR

The floor plan of the second floor is divided into several sections. On the left, there is a large area labeled 'EXOTIC MAMMALS' and 'SMALL MAMMALS'. Above this is a section labeled 'LABORATORIES'. To the right of the 'EXOTIC MAMMALS' section is a small area labeled 'BIRDS'. Further right is a section labeled 'AFRICAN ETHNOLOGY'. Above this section is a section labeled 'INVERTEBRATE ZOOLOGY'. To the right of the 'INVERTEBRATE ZOOLOGY' section is a section labeled 'BOTANY'. Above this section is a section labeled 'BOTANY HALL'. To the right of the 'BOTANY HALL' section is a section labeled 'NORTH AMERICAN MAMMALS'. Below this section is a section labeled 'MARINE HALL'. To the right of the 'MARINE HALL' section is a section labeled 'MEZZANINE'. Above the 'MEZZANINE' section is a section labeled 'SHELLS'. To the right of the 'SHELLS' section is a section labeled 'FOSSILS'. Above the 'FOSSILS' section is a section labeled 'INSECTS'. A central area is labeled 'CLOSED FOR PREPARATION OF NEW EXHIBITS'. Stairs are indicated by 'DN' (down) and 'UP' symbols. A small 'ELEV.' (elevator) is also shown.

LABORATORIES

EXOTIC MAMMALS

SMALL MAMMALS

BIRDS

AFRICAN ETHNOLOGY

INVERTEBRATE ZOOLOGY

BOTANY

BOTANY HALL

NORTH AMERICAN MAMMALS

MARINE HALL

MEZZANINE

SHELLS

FOSSILS

INSECTS

CLOSED FOR PREPARATION OF NEW EXHIBITS

ELEV.

DN

UP

MAIN FLOOR

ENTRANCE

Checkers

BOOKSHOP

CHANGING HISTORY AND SCIENCE

AFRICAN MAMMALS

ARMS AND ARMOR

HISTORY OF COMPUTATION

COLONIAL HALL

TERRACE

CHANGING SCIENCE

H. HOWARD CENOZOIC HALL

FOSSIL VERTEBRATES

SO. CALIF. GEOLOGY

SOUTH PACIFIC ETHNOLOGY

NORTH AMERICAN MAMMALS

PRE-COLUMBIAN ARCHEOLOGY

LA BREA FOSSILS

MINERAL HALL

PARKING AREA

TO MEZZ.

DN (Down)

UP (Up)

PHONE

GROUND FLOOR

NORTH
WEST — ● — EAST
SOUTH

PARKING AREA

EDUCATION DIVISION
LENDING SERVICE ENTRANCE

SHIPPING ENTRANCE
DOWN

CAFETERIA

SHIPPING ROOM

LABORATORIES

PLAINS INDIANS
UP

WESTERN INDIANS

RESEARCH LIBRARY

WESTWARD MOVEMENT

CALIFORNIA HALL

TRANSPORTATION

LOUNGE

VROMAN GALLERY

TIME & MEASUREMENT
UP

CHANGING EXHIBITIONS
UP

INDUSTRIAL TECHNOLOGY

W

M

ELEV.

UP