



MAP AND GUIDE TO **MESA VERDE**

*National
Park*

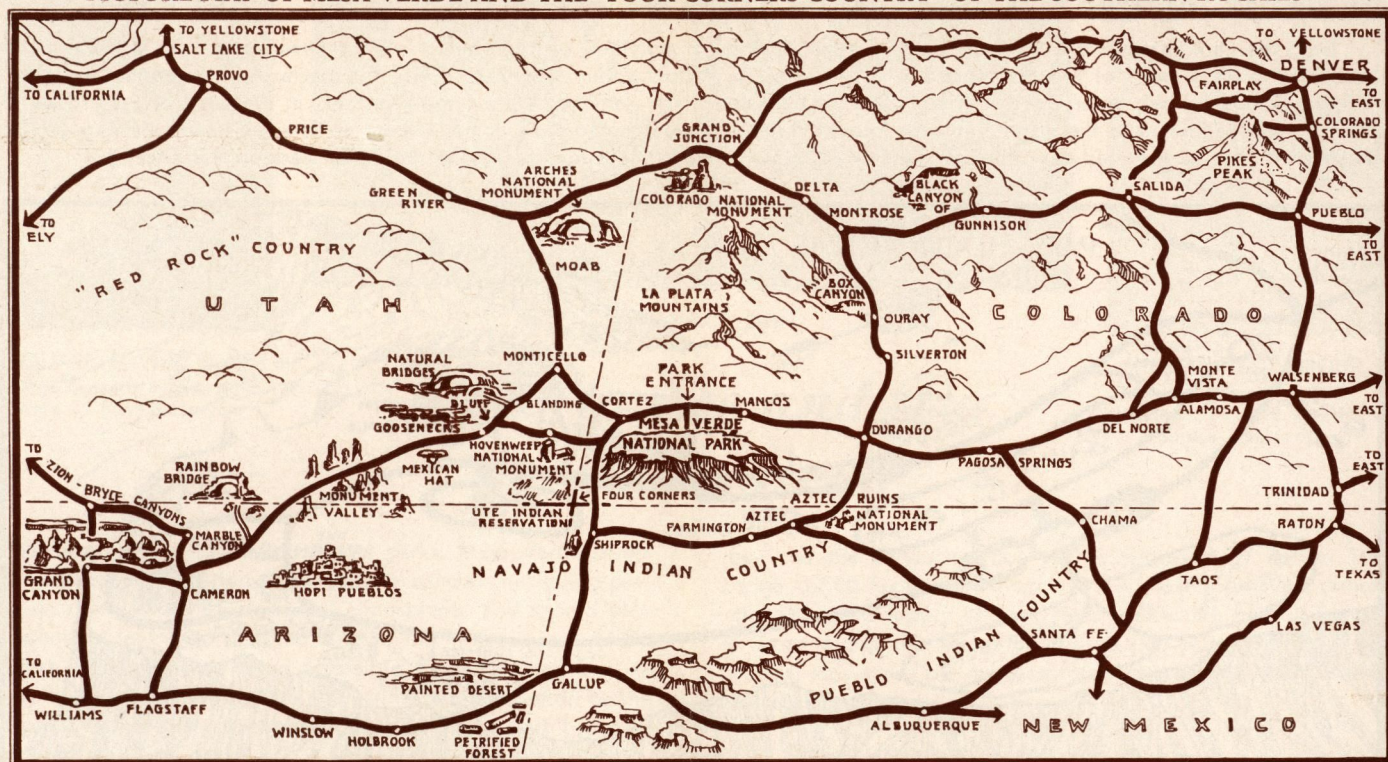
Follow the
**SCENIC
NAVAJO
TRAIL**
through the
ROCKIES

1961

Published by Mesa Verde Co., Concessioner authorized by the National Park Service, U. S. Dept. of the Interior to provide public service in Mesa Verde National Park, Colorado.

MESA VERDE NATIONAL PARK

PICTURE MAP OF MESA VERDE AND THE "FOUR-CORNERS COUNTRY" OF THE SOUTHERN ROCKIES



Your Trip To Mesa Verde National Park

No trip through the Southwest, or southern Rockies, is complete without a day or two—or longer—in Mesa Verde National Park, spent in a restful atmosphere with opportunity to explore enormous prehistoric ruins left by a people that vanished almost a thousand years ago.

Fine new paved highways have shortened the driving time to only one day from Denver, Salt Lake City, Grand Canyon, or Santa Fe. For those traveling to the East or West over Highway 66, Mesa Verde National Park may be reached by a 4-hour drive from Gallup. Motorists driving to or from the Pacific Coast, or those seeking a newly accessible and very spectacular scenic area of the Southwest, will be delighted to know about the recently paved highway between Flagstaff and Monument Valley, Mexican Hat, the Goosenecks and other areas of scenic southern Utah—with continuation of paved highway between Monticello and Mesa Verde. This new road is a short-cut for transcontinental vacation travel, which opens up one of the most spectacular scenic areas of America's frontier. In 1962 a new link of this, the NAVAJO TRAIL, will be completed and paved—the shorter and only slightly less scenic "Four Corners Highway" between Kayenta and Mesa Verde.

Good overnight accommodations are available in the Park Headquarters area close to the Museum, the starting point for trails and roads to the Ruins, the evening campfire circle, the

beginning of saddlehorse trail trips, and many other facilities. The Lodge cabins accommodate approximately 350 guests; it is advisable to telephone in advance for reservations (Mancos, Colorado, 3651.) If you have not made previous inquiry, stop at the INFORMATION STATION on Highway 160 at the Park Entrance where there is free telephone service to the Park Center, 21 miles distant. It is recommended that here you obtain a copy of the "Guide to Mesa Verde" which will help you plan your sightseeing in the Park.

Accommodations are also available at the Park Entrance, where Point Lookout Lodge (telephone: Mancos 3321) provides cabins, a limited number of improved facilities for house trailers, a restaurant, a gasoline and oil service station, a repair garage (including free AAA road service) and a Goodyear tire agency.

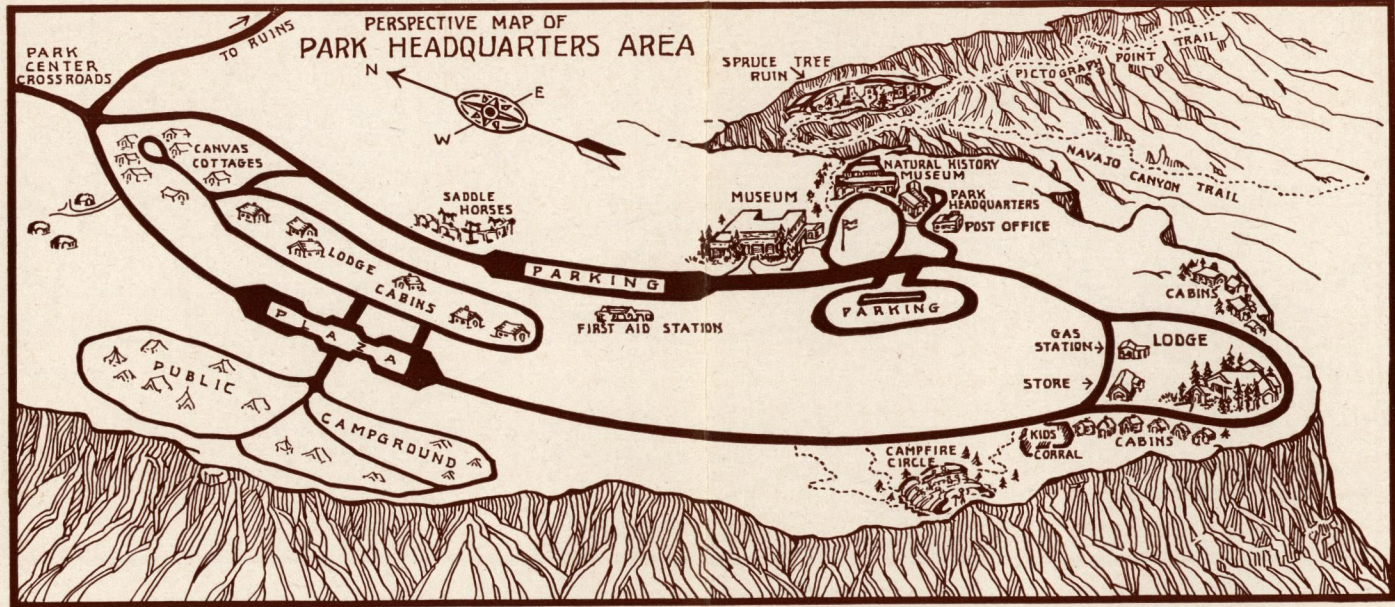
Bus service from Durango direct to Spruce Tree Lodge at the Park Center is scheduled twice daily by Continental Trailways. Plans are also being made for daily service from the Continental Bus Depot in Cortez, 31 miles from the Park Center.

Increasing numbers of visitors now arrive via Frontier Airlines; airports are in Durango, 38 miles east of the Park Entrance, and in Cortez, 10 miles to the west.

The above Pictorial Map is intended to locate a few of the interesting features of the Mesa Verde region and the centers of population within one day's motor travel. Mileage and other details are readily available on any good highway map.

ENTERING THE PARK: The Park Entrance is on Highway 160, 38 miles west of Durango, Colorado, and 10 miles east of Cortez. At this point, facing the Highway, an INFORMATION STATION is maintained which provides free telephone service to Spruce Tree Lodge for reservations at the Park Center. Similar courtesies are extended at the nearby stone buildings of Point Lookout Lodge where there is a restaurant, repair garage, gas and oil service station, and—some distance back from the road—cabins providing quiet overnight accommodations, plus modern house trailer facilities, and campsites with showers.

From the Park Entrance it is 21 miles to Mesa Verde's center of activities, pictured below. As the paved high-gear highway climbs 1,500 feet to the summit of this flat-topped mountain, stop at Mancos Valley Overlook to identify spectacular geographic features to the east. A mile farther, enter the tunnel between Morfield and Prater canyons. Knife Edge Overlook, at the head of Prater Canyon, offers a wide panorama to the north and west (see exhibits). The side-trip to Park Point Lookout is detailed on opposite page. The last several miles of the road pass through generally sloping forested mesa-top country to the Park Headquarters Area.



ACCOMMODATIONS AT THE PARK CENTER — BUDGET INFORMATION

Travel Season of 1961 — May 15 through October 15

OVERNIGHT ACCOMMODATIONS: Register at Spruce Tree Lodge, near Park Headquarters. The main building houses Lobby, Dining Room, Lunch Counter, Soda Fountain, Sipapu (bar), and Gift Shop. All sleeping accommodations are in cabins, comfortably furnished, mostly with bath; a limited number of canvas cottages, with hotel service, provides for lower budget housing. Advance reservations, with deposit, are advisable. For reservations write Mesa Verde Company, Mesa Verde National Park, Colorado, or telephone Mancos 3651.

ROOM RATES:	Single Occu-pancy	Two Persons Double Bed	Twin Beds	Additional person	
				Bed	Cot
Room, large, with bath.....	\$8.25	\$9.50	\$10.50	\$2.00	\$1.00
Room, small, with bath.....	6.25	7.50	8.50		
Room, small, without bath.....	4.25	5.50	6.50		
Room in Canvas Cabin, Hotel type furnishing and service....	3.75	5.00	6.00	1.25	1.00

Housekeeping Cabins, in limited number, are also available. Facilities and rates are the same as "Room, large, with bath" in above price schedule, with \$1.00 (per entire party) added for use of kitchen and dining room equipment, refrigerator, gas fuel, etc.

Rates for Children: Under 3 years, free if no extra bed is used; under 8 years, half rate; 8 years or over, full rate.

All rates, approved by National Park Service, U. S. Department of the Interior, are subject to change only by Government approval.

MEALS, SANDWICHES, SNACKS AND REFRESHMENTS

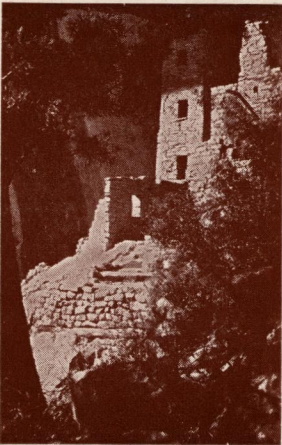
Lodge Dining Room—Club breakfast, 65c to \$1.75; Lunch, a la carte; Dinner, complete, \$1.95 to \$3.50.

Lunch Counter and Soda Fountain are reached through south-east entrance of Lodge. Menu moderately priced.

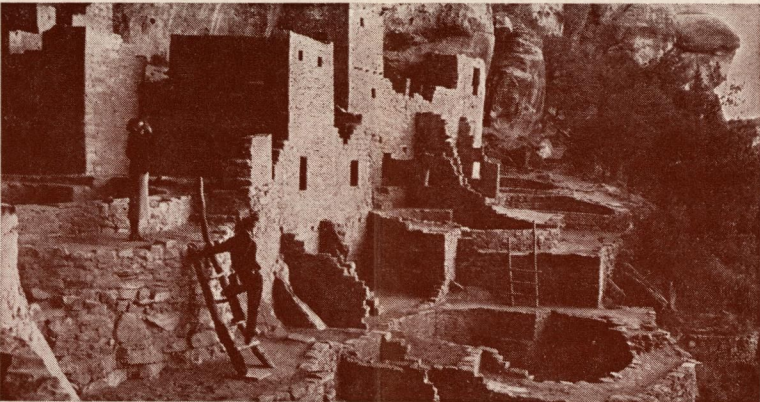
Sipapu (Hopi "spiritous entrance to the underworld") is entered through Lobby.

KIDS' CORRAL: Children cared for at reasonable family rates while you visit the Ruins. Well-equipped play yard supervised by experienced nursery school personnel; ages 2 to 7; 8:00 a.m. to 5:00 p.m. daily.

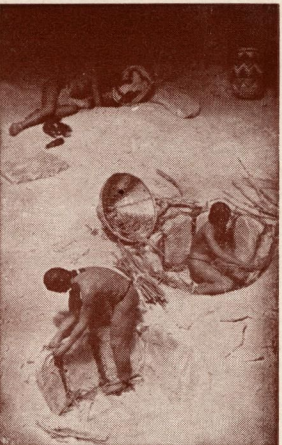
SIGHTSEEING TRIPS BY BUS: There are three 3-hour sightseeing trips daily; morning and afternoon trips to different parts of Mesa to visit ruins; late afternoon sunset trip to Park Point, highest summit of Mesa Verde. Rates: \$2.00 per person, plus tax.



SQUARE TOWER RUIN
clings beneath overhanging walls of Navajo Canyon.



CLIFF PALACE RUIN



BASKETMAKER GROUP,
in the Museum at Park Headquarters, 200 yds. from Spruce Tree Lodge.

What to See and Do in Mesa Verde

Unique among American national parks, Mesa Verde offers a remarkable combination of spectacular scenery, intriguing pre-historic ruins, and a quiet, restful atmosphere. You should plan to spend at least two or three days in the Park if you wish to explore the larger and more accessible Cliff Dwellings and to enjoy the many features of the interesting program put on by the Ranger-Archaeologists, and other members of the Park Interpretive Staff.

ARRIVAL: On arriving in Mesa Verde it is wise to reserve cabin accommodations at the Lodge, or to establish your camp in one of the Public Campgrounds. Both are within easy walking distance of the Museum, the Campfire Circle, the beginning of the trail to Spruce Tree Ruin, and to what will be the center of your activities for the following two or three days.

GO FIRST TO THE MUSEUM: Understanding of the life and times of the cliff dwellers will add greatly to your enjoyment while in Mesa Verde. Get this background by first visiting the MUSEUM where an interesting half hour will outline the main features of the remarkable stone age civilization that flourished here a thousand years ago.

FIRST VIEW OF THE RUINS: You will never forget the beauty of Spruce Tree Ruin as you first see it from the balcony of the Natural History Building. Start your sightseeing here.

GUIDED TRIPS THROUGH THE RUINS: The Government maintains a free ranger guide service. Detailed information will be furnished at the Park entrance, Museum, or Lodge regarding the time schedule for the conducted tours through the larger and more spectacular ruins. There are several different trips and each should be made the main feature of a half day of sightseeing. You may drive in your own car to the vicinity of the ruins or

may use the conducted bus service provided by Spruce Tree Lodge (\$2.00 for a 2-or-3-hour round trip). If you have a camera take an ample supply of film. Field glasses are helpful for use at stops along the mesa rim where trail-side exhibits, view-finders, etc., point out more remote ruins in the canyons below and on distant walls.

PARK POINT LOOKOUT: Don't fail to view the sunset from Park Point Lookout (altitude 8572 feet). This observation station on the highest summit of Mesa Verde offers a commanding panorama of mountain and desert topography and overlooks the "Four Corners Country" on the Navajo Reservation, the only point in the U. S. common to four States. The ranger on duty will explain how forest fires are detected and will point out scenic and scientific features of the remarkable landscape. The Lookout Station is open to visitors from 7:30 a.m. until dark, except during the noon hour.

EVENING CAMPFIRE: Rangers give talks each evening at Campfire Circle, about 100 yards north of Spruce Tree Lodge. Archaeologists tell the story of the ancient people who built the great cliff dwellings of Mesa Verde and of present day Indian inhabitants of the region. Navajo dance team frequently demonstrates tribal dances and chants. No visitor should miss the experience of attending these campfire meetings which are varied each evening to provide one of the most important features of the Park interpretive service.

HORSEBACK TRIPS: Saddle horses are available for rides on mesa-top trails or longer half- and full-day trips into the canyons to remote unexcavated ruins. Obtain detailed information from cowboy guides at evening campfire, or at the hitching rack north of the Museum. Lodge personnel will be glad to help arrange rides for guests or casual visitors.

MESA VERDE DIRECTORY

Identify locations in "airplane view" on Page 2.

LODGE—CABINS: 100 yards south of Govt. Headquarters.

MEALS: Dining room and lunch counter are at Lodge close to point where all trips start. Moderate prices.

SODA FOUNTAIN AND LUNCH COUNTER: Entrance at south-east corner of Lodge building.

SIPAPU (bar): At Lodge; easily located by thirsty explorers.

PHOTOGRAPHIC FILM, CURIOS, POST CARDS: At Lodge Lobby, newsstand, and gift shop.

NAVAJO SILVER JEWELRY AND RUGS: Display in gift shop off lobby. Lodge cooperates with government in handling only authentic Indian made jewelry and other native handicraft at reasonable prices.

KIDS' CORRAL: 75 paces from Store. Children, 2 to 7 years, cared for at reasonable family rates while you visit the Ruins.

STORE: Groceries, meats, vegetables, bakery goods, ice cream, soda pop, etc. Located near Lodge.

GAS AND OIL, TIRES, REPAIRS: Service station is adjacent to Store; for free AAA road service in Park, telephone MANCOS 3651. Mesa Verde Service Station attendant will telephone, if necessary, to larger Chevron station at Park Entrance, for tires, batteries, repair parts, etc.

LAUNDRY: Make inquiry at store.

TELEPHONE AND TELEGRAPH SERVICE: At Lodge.

PUBLIC COMFORT STATIONS: In basement of Natural History Building and also in Public Camp Ground.

FIRST AID STATION: 100 yards north of Museum. Registered nurse in charge.

MUSEUM: At Park Headquarters and at center of activities. Spend an hour or two here before taking guided trips to ruins.

SPRUCE TREE RUIN: The first big ruin you will see. Get first view from balcony of Natural History Building.

GUIDED TRIPS TO THE RUINS: Government maintains free ranger-guide interpretive service in the Ruins. For the two 3-hour sightseeing trips you may use the convenient conducted bus service from the Lodge at \$2.00 per trip or go in your own car. Obtain full details at Lodge or Museum.

SADDLE HORSE TRIPS: Horses may be rented by the hour or day for Mesa trails or for trips into canyons and to little known unexcavated ruins. Make inquiry at hitching rack north of Museum, at evening campfire, or at Lodge Office.

EVENING CAMPFIRE TALKS: Campfire circle is on canyon rim 100 yards north of Lodge. Rangers tell about Indians, ruins, trips, etc.

NAVAJO INDIANS: Mesa Verde is adjacent to the Navajo Reservation; many natives work here during the summer. Silversmiths and rug weavers occasionally demonstrate native arts and crafts near entrance to Lodge; no charge.

PUBLIC CAMPGROUND: On the rim in the "Plaza Area" about 200 yards north of the Lodge. Meals can be taken conveniently at Lodge coffee shop or lunch counter.

HOUSE TRAILER SITES: A few trailer sites, with modern utility connections, are available at Point Lookout Lodge, at the Park Entrance, but none, as yet, in Park. Trailer owners should consult ranger at Park Entrance Checking Station regarding available parking space.