

Columbia River Cascade Mountains Resorts



Clatsop Beach Pacific Ocean Oregon



ROUTLEDGE

Pacific Northwest

Seashore
Fishing



Mountain
Resorts



Mount Adams



Promenade, Seaside



Clatsop Beach Links



Sunset, Pacific Ocean



On the Beach



Bathing Hour, Clatsop Beach



Deschutes River Trout



A VACATION LAND RAILWAY



Columbia River, Cascade Mountains

THE PACIFIC NORTHWEST A GREAT VACATION LAND

PEOPLE of every age and circumstance require the rest and recreation of the vacation time.

The Pacific Northwest is blessed with rare and varied resorts and retreats—seashore, mountains, rivers, lakes and forests—unexcelled in all the land, offering selection to suit any wish.

In no section of our country has Nature been more generous with her invitation to the enjoyment of her great out-of-doors or more prodigal in the provision of rich and delightful spots for the pleasure and profit of her children.

These places may be reached by short trips, which indeed are important and interesting parts of the vacation plans.

Some of the best of these districts, the routes to them and places of attraction along the way are described herein, principally by the camera.

Spokane to Portland Columbia River—Cascade Mountains

THE trip from Spokane to Portland on limited trains of The North Bank Road gives the visitor splendid views of some of the choicest scenery in the Northwest.



Columbia River, Cape Horn and Tunnel



MOUNTAINS, RIVERS AND OCEAN



Leaving Spokane the line passes onto a great plateau, skirts grain districts, small lakes, through rock cuts and tunnels to the rim of the walls of the Snake River Canyon, which it descends by easy grade to and crosses the great Columbia River at Pasco.

The height, depth and expanse of this canyon scenery would make it far-famed in any country less endowed with nature's wonders. The character of the railway line here tells the genius of its builders.

The dominating browns and yellows in volcanic rock bespeak the geological origin of this region.

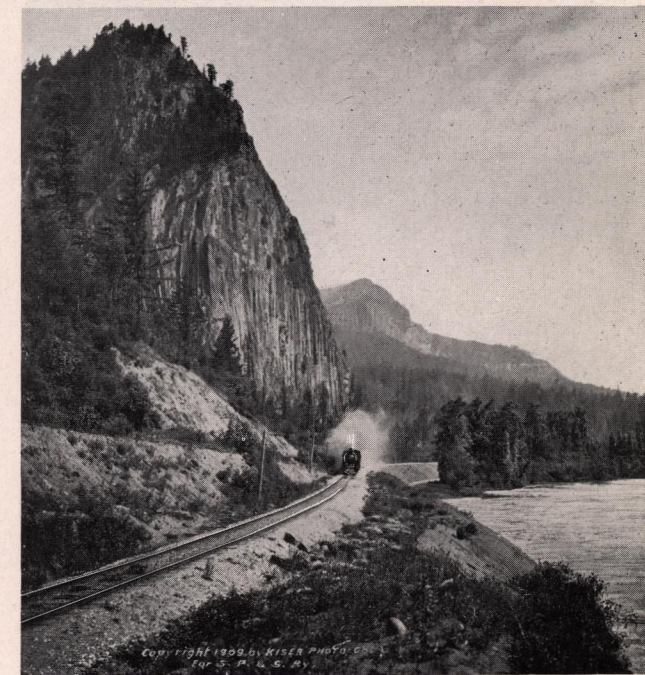
From Pasco to Vancouver, Wash., the north bank of the Columbia River is followed—hence the popular name of this line—through the very heart of the Cascade Mountains.

Westward for some miles from Kennewick are seen irrigated tracts of fruit, berries and grasses. Beyond them lie grazing lands in the valley and on the surrounding slopes, with grain fields here and there on the uplands.

The valley narrows, the surrounding hills rise higher and closer, volcanic rocks pile up in formations of great proportions from Goodnoe westward, as if raising the curtain for the beauty and grandeur of the mountain, river and forest scenery beyond.

For many miles from Goodnoe to Hood the chaste contours of snow-capped Mt. Hood (elevation 11,225 feet) are seen.

The current of the Columbia River grows swifter as the shores narrow or the channel is cut by islands of rock; at Fallbridge are Celilo Falls, crossed by the bridge of the Oregon Trunk Railway, which leads to Central Ore-



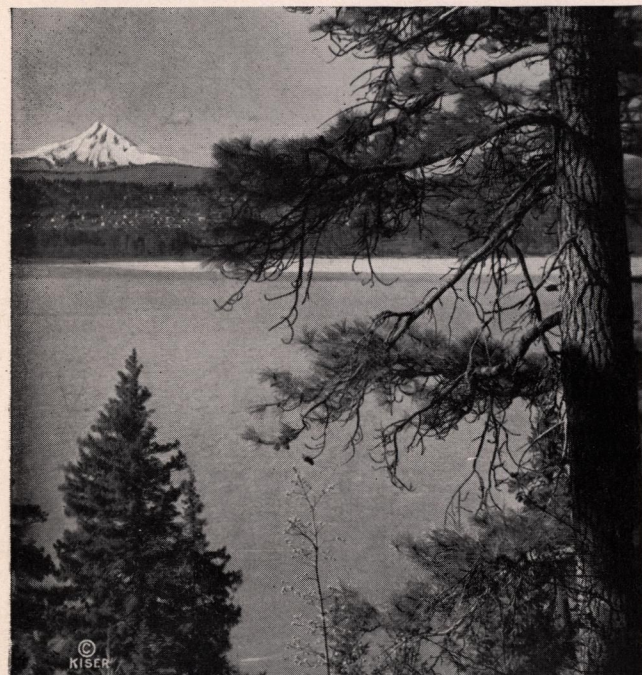
Beacon Rock, Columbia River



Columbia River near White Salmon and Lyle



A VACATION LAND RAILWAY



Mt. Hood from White Salmon

gon. The foot of the mountains reach the track itself along the river shore, and forests of pines and fir clothe their lower reaches. White Salmon, Carson and Stevenson are good stopover places for visits into the fishing and mountain resort districts. At these and other stations are splendid vantage points for viewing the wonderful mountain and river scenery. At the head of the White Salmon Valley stands Mt. Adams (elevation, 12,307 feet), a favorite Alpine climb. The railroad from Lyle or a splendid motor road from Maryhill leads over the heights to Goldendale, from which also Mt. Adams may be reached. Meritorious hot mineral springs are found at Carson and Cascades. The mountain, health, river and fishing districts just mentioned may be reached also by trips from Portland.

Over the mountain cliffs on the Oregon shore drop numerous crystal cataracts, and for miles may be seen the threading line of the Columbia River Highway.

At Vancouver the railroad crosses again the Columbia River, then the Willamette, and follows the line of the lower harbor, past lumber mills and many other extensive industrial concerns on its double-tracked entrance to Portland.

Portland

PORTLAND, OREGON, is the heart of this wonderful Pacific Northwest out-of-doors land.

It is a commercial center of great and growing importance, its rail and ocean trade reaches the four quarters



Columbia River and Mitchell Point Tunnel, Columbia River Highway



MOUNTAINS, RIVERS AND OCEAN

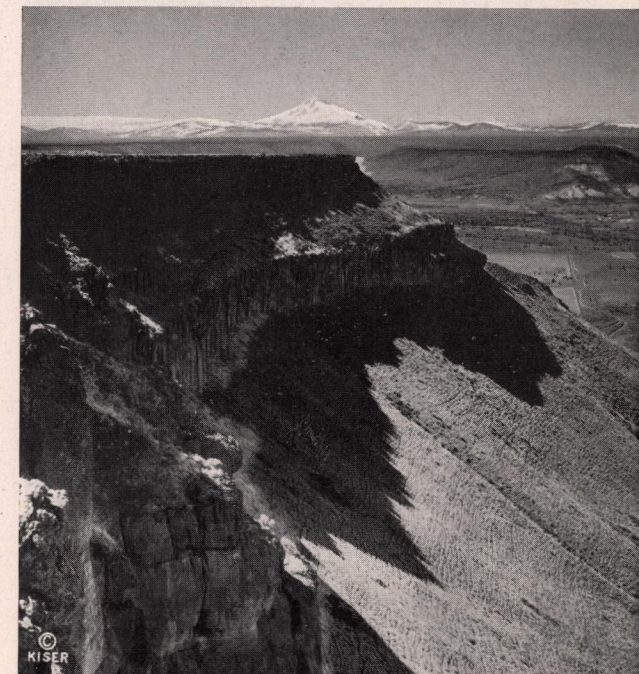


of the earth, and its extensive banking, manufacturing and mercantile establishments incite the interest of visitors.

It is a city of 270,000 population, unusual in the beauty of situation, lying on both sides of the Willamette River, builded upon easy slopes from the river and the surrounding heights, watched over by mountain ranges in three directions, while to the fourth lies the beautiful and fertile valley of the Willamette—all encompassed by the richness of evergreen forests. The climate of Portland is delightful. The summer's soft, temperate days, the cool nights, the air from ocean and mountain bring unfailing rest and refreshment.

Portland has splendid hotels, homes, parks, public buildings, libraries, theatres, stores, bazaars and amusement places. A system of paved boulevards covering the city, surrounding districts of scenic advantage and the distant countryside affords visitors surprisingly delightful automobile trips, of constant and varying interest. The longest and most wonderfully constructed of these is the well-famed Columbia River Highway, leading from Portland eastward along the sheer cliffs of the Columbia River and into the heart of the Cascade Mountains. Indeed it reveals an amazing and changing panorama of snow-peaked mountains, Hood and Adams, the expanding waters of the Columbia, glacial-fed cataracts, forest of fir, pine, larch and cedar, and matchless effects of cloud and of the rising and setting sun.

The gardens of Portland are filled with flowers of endless variety and of prodigal bloom. Here rose culture has reached such perfection that Portland has been well named the Rose City.



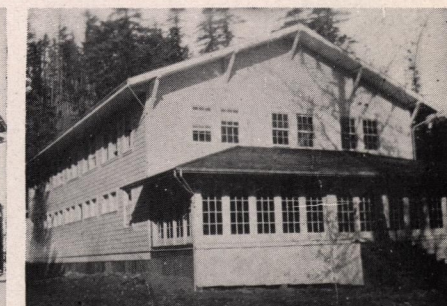
Mt. Jefferson, Deschutes Canyon



Shipherds Springs, Carson



Pilot Butte, Bend



Moffett's Springs, Cascades



The Eyrie, White Salmon



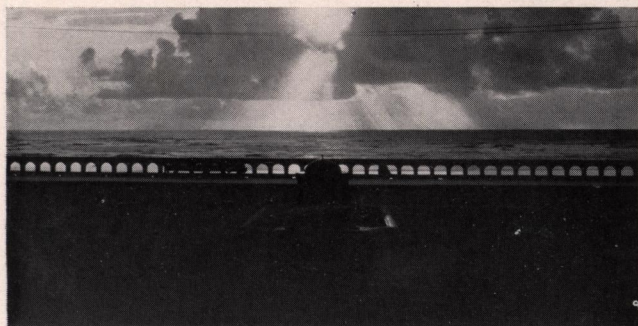
Warren, Cannon Beach



Jewett Farm, White Salmon



A VACATION LAND RAILWAY



Promenade and Sunset



Pacific University Summer School, Seaside

Seaside

Seaside is a city of several thousand during the summer season, and hotels, restaurants, boarding places, and stores are open all the year. It is well equipped with modern improvements—paved streets, light, water and ocean front promenade.

A new golf course, open to visitors, will be ready for play during the season of 1923. It is splendidly located on both sides of the beautiful Necanicum River and reaches toward the ocean front. A small greens fee is charged visitors.

Seaside has numerous hotels, restaurants, boarding houses, cottages and tents for rent, salt water natatorium, churches, stores, markets, theatres, dance pavilions, day nursery for children, etc., and it is the end of the historic Lewis and Clark Trail.

The large new Seaside Hotel merits special consideration. It occupies the site of the former Hotel Moore, on the promenade and ocean front; provides accommodation for 250 guests, and is designed and furnished to meet the requirements of the best resort patronage, and is open all year. A large number of single and double rooms and suites have private baths.

It and other hotels, cottages, boarding and rooming houses, tent and camp facilities provide a range in accommodation and price to meet varying wishes or needs.

Beginning with the season of 1923 the Pacific University—Forest Grove, Oregon—will conduct Summer School sessions at Seaside. Academic courses will be offered in



Clatsop Beach and Tillamook Head, Seaside



MOUNTAINS, RIVERS AND OCEAN



Clatsop Beach has enjoyed a fine growth in population from large numbers of people who appreciate the delightful advantages of homes at the seashore, and have builded hundreds of cottages, large and small, facing the sea, in the meadows or near the friendly spruce groves.

No other Pacific Ocean resort in the Northwest offers lovers of the sea so great a variety of attractions, amusements and accommodations as Clatsop Beach, centered at Seaside and Gearhart. Indeed it well merits the name "The Premier Ocean Resort of the Northwest."

Gearhart

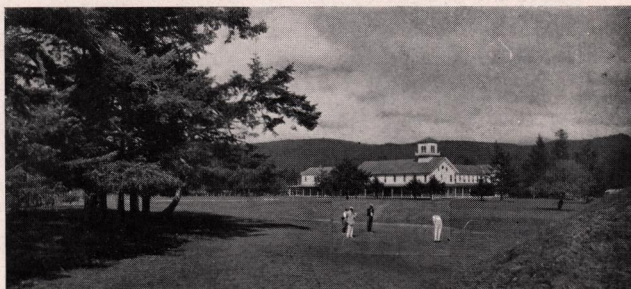
At Gearhart an eighteen-hole golf course is laid upon rolling sweeps between ocean front and evergreen forest, and is open to visitors. Its natural situation is a real joy to lovers of this game, and an additional nine-hole course will be placed in service for the season of 1923. Visitors have the use of the links by the payment of a greens fee. A salt water natatorium is nearby.

The new Gearhart Hotel, occupying a most slightly location with commanding views of ocean, forests and golf links, will be open to guests all the year, beginning July, 1923. It is unusually attractive in design and appointments, with accommodations for 175 guests; its rooms are single, double and en suite, most of them with bath.

This large, new hotel is a splendid addition to the facilities for the entertainment of visitors to Clatsop Beach, and affords accommodation for the best class of patronage.



The Gearhart Links

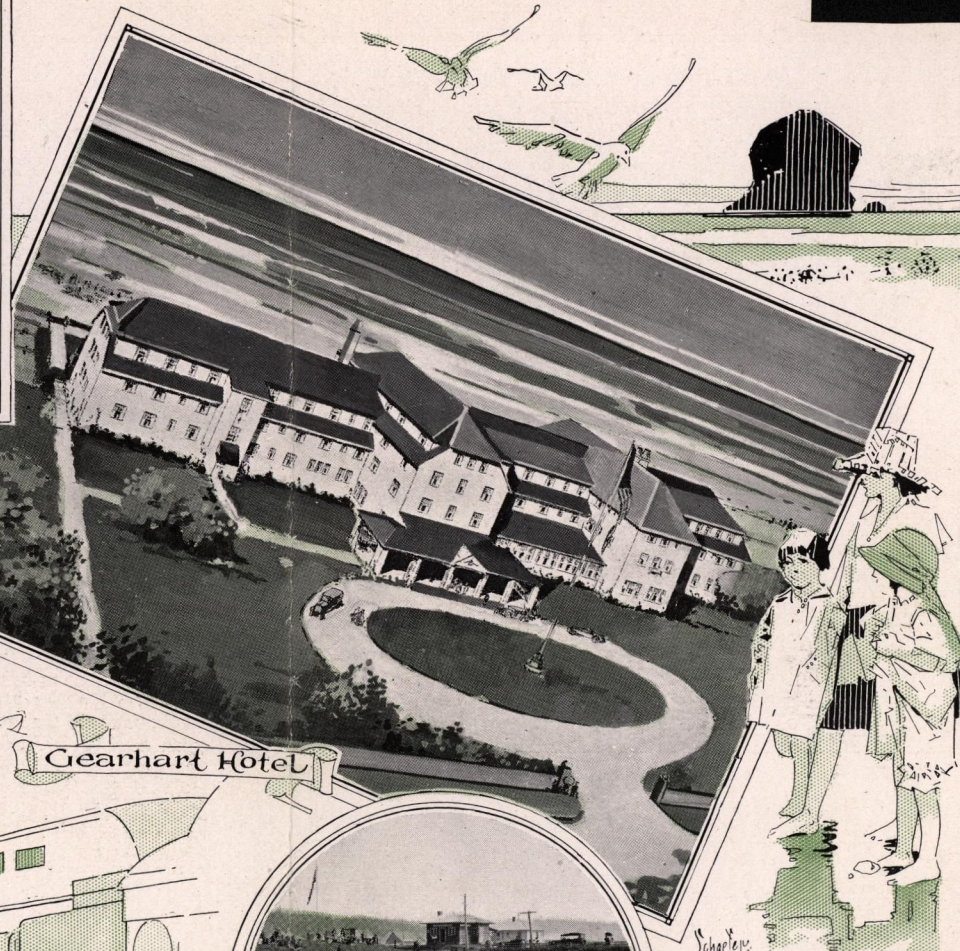
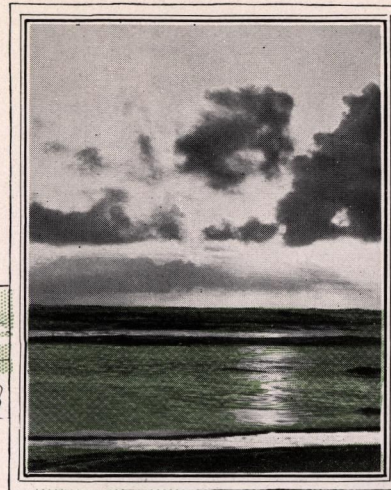


The Seaside Links



Columbia River, West of Portland

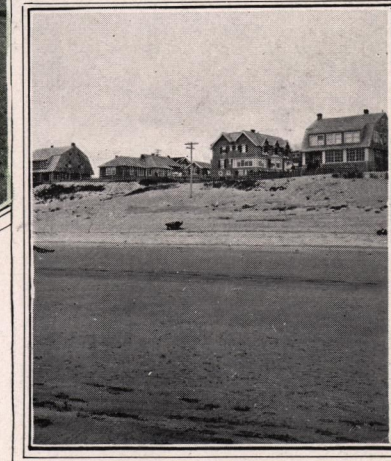
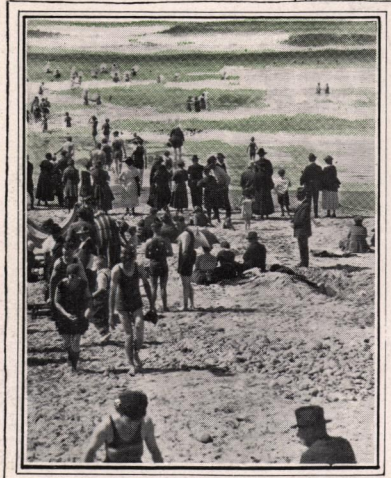
Seaside Hotel



Gearhart Hotel

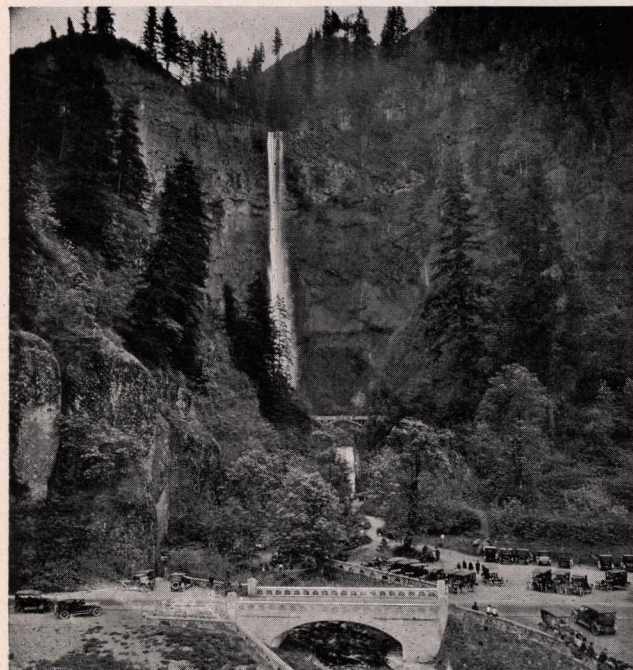


CLATSOP BEACH OREGON PREMIER OCEAN RESORT OF THE NORTHWEST





A VACATION LAND RAILWAY



Multnomah Falls, 620 Feet

Along the Lower Columbia River Portland to Astoria and the Sea

IN ALL THIS LAND of interest no short trip gives the visitor so varying and complete a view of sweeping river, forest, mountain, ocean, lumbering and fishing as this.

A journey of one hundred miles in a fast train of The North Bank Road along the shores of the Willamette and Columbia Rivers between Portland, Astoria and the Pacific Ocean, gives the eye nature's true tints of a beautiful picture, rare in its composition, variety and extent.

In the run of a little more than three hours are many scenes novel to the tourist—lumber mills and logging operations, river and ocean craft, fishing villages and fleets of fishermen's boats and vistas of forested coast ranges. For miles, soon after leaving Portland, Mt. St. Helens dominates the skyline of the Cascade Range in Washington.

The track follows the shore of the ever-widening and mighty Columbia River, with changing vistas, to Astoria.

Astoria

THE first American settlement on the Pacific Coast was at Astoria. In the City Park, occupying a site on the heights with a commanding outlook, is a replica of old Fort Astoria. The log stockade visualizes the setting of historic events portrayed in Irving's "Astoria."



Columbia River Highway



MOUNTAINS, RIVERS AND OCEAN



Rising on the slopes above the Columbia River, the homes and public buildings overlook a vast panorama of mountain, forest, river and ocean.

Astoria's modern maritime importance is evidenced by the miles of busy waterfront, the shipping, docks, lumber and flouring mills, salmon canneries and other enterprises.

The city is the center of the salmon fishing and canning industries. The acres of net racks, the canneries and the fleets of fishing boats constitute a sight of unusual interest.

Following the extensive waterfront of the city, The North Bank Road crosses a long bridge over Young's Bay, and runs through meadows, fields of wild flowers and evergreen woods to the end of the Lewis and Clark Trail at Clatsop Beach on the Pacific Ocean.

Clatsop Beach, Pacific Ocean

SOUTHWARD for twenty-five miles from the mouth of the Columbia River reach the smooth, surf-washed sands of Clatsop Beach, ending at the dominating, timbered heights of Tillamook Head.

Upon this vast natural veranda of the Pacific Ocean hotels, cottages, homes and camps abound. There are accommodations for all desires, from the first-class hotels and roomy cottages to modest boarding places, comfortably furnished tent houses and camp sites.

Clatsop Beach is devoid of the barrenness sometimes associated with the seacoast. Here are rolling, grassy meadows and groves of evergreen trees, with a background of primitive forest reaching to the nearby mountain tops.



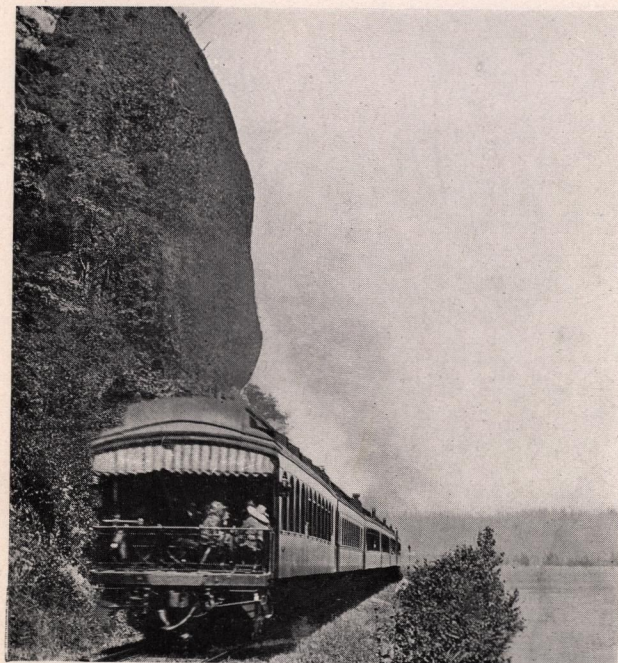
Portland and Mt. Hood



The Sweep of the Columbia River East of Portland



A VACATION LAND RAILWAY



Pyramid Rock, West of Portland

It is an all-year resort, for freezing weather is seldom known, and the ever refreshing and recreating influence of the soft salt air and music of the sea waves, in surroundings of unusual richness and beauty, entice lovers of nature and the weary to this spot at all seasons. Spring and autumn are delightful. But the glory of the year is summer, when conditions here reach perfection, with azure sky, argent cloud, ocean's deep blue, salt breeze, soft days and cool nights inviting open fires, blankets and slumber. Clatsop Beach is supplied with pure spring water from the mountains. It is extremely healthful, and there are no mosquitoes or similar pests.

The surf bathing at Clatsop Beach is invigorating and delightful. The water is free from rocks, sea growths or drift matter, and the descent is gradual. The bathing hour is the rallying time for all ages.

Aside from the pleasures of bathing in the surf, lolling in the sands or tramping for miles the wave-beaten shore, visitors find that nature has been generous in furnishing many attractions for out-of-door life. Tillamook Head provides a good climb through forest of giant spruce, rewarded by grand views of ocean, mountain and timberland; mountain streams give fine fishing in season; tide-washed rivers invite canoeing or boating; trails to distant points through meadows and woods allure the pedestrian; and man has constructed splendid highways for automobile or horse.

Clatsop Beach is served by electric light and mountain water. Hotels and restaurants make a specialty of crabs, clams and other sea foods, with dairy products, poultry and eggs from near-by ranches.



Portland, The City of Roses



MOUNTAINS, RIVERS AND OCEAN



a variety of subjects—high school administration and problems, teaching and education, sociology, English composition, short story writing, biology, music, athletics, etc. This Summer School offers a splendid opportunity for prosecuting collegiate work under ideal conditions at an ocean resort. Its session for 1923 will be from July 16 to August 24, details of which may be obtained on request to the President, Pacific University, Forest Grove, Oregon, or The Summer School Committee, Seaside, Oregon.

Cannon Beach

TEN MILES south of Seaside by a good motor road leading through splendid forest and over Tillamook Head is Elk Creek, beyond which for twelve miles stretch the wide, hard sands of Cannon Beach, a most beautiful combination of fantastic rocks, forests and ocean fronts.

Cragged headlands project into the breakers and a series of solitary, imposing pillars of rock lend a distinction not exceeded on the entire Western Coast. Resort homes, camps and hotels are found along this beach.

North Beach

ON the Washington side of the Columbia River, extending northward, is North Beach. Its chief attraction is the beach itself. It faces the Pacific for twenty-five miles, and at low tide affords a boulevard the entire distance some four hundred feet wide of compact sand.



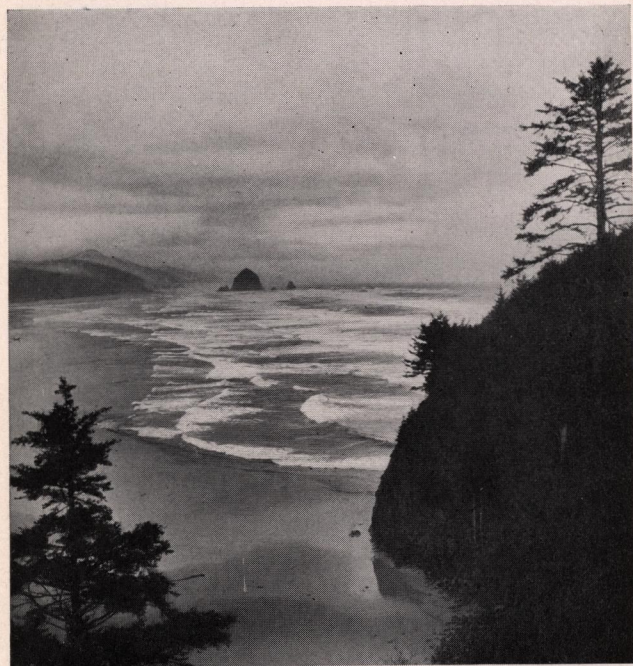
Every Day Is Children's Day



Clatsop Beach and Tillamook Head, Gearhart



A VACATION LAND RAILWAY



Cannon Beach

Summer hamlets sheltered in pretty groves of spruce are strewn along the shore in goodly number, each provided with comfortable hotel, cottage and camp accommodations. The principal points are Seaview, Long Beach and Ocean Park.

North Beach is ideal for surf bathing. The descent is so gradual that bathers wade out a long distance before getting into deep water. At night the great delight is bonfires.

It is a great place for the pedestrian, who may take short or long walks to points of changing interest, including the ocean itself, the North Head promontory and Willapa Harbor.

Willamette Valley and McKenzie River

EXTENDING south of Portland for one hundred and thirty miles, between the Cascade and Coast Ranges of mountains lies the beautiful and fertile valley of the Willamette River. Its rich soil produces splendid crops of grains, grasses, hops, fruit, berries and garden stuffs. To the East rise snow-capped mountain peaks and to the West a rakish range separates it from the ocean. Throughout the valley itself and covering the mountains are forests of evergreen. Snow-fed streams and rivers water its lands, and provide rare sport for the fisherman. Its towns and cities are progressive and beautifully situated, with ample and comfortable accommodations for visitors.



The Surf and Bathers, Seaside



FISHING, CAMPING, HEALTH RESORTS



Salem is the capital of Oregon and the seat of Willamette University, Albany is the center of the Valley, Corvallis the seat of the Oregon Agricultural College, and Eugene of the University of Oregon. All are located on the Willamette River surrounded by productive agricultural and horticultural districts. Hillsboro and Forest Grove are within an hour's ride from Portland.

The best trout fishing is found in the McKenzie and upper Willamette Rivers adjacent to Eugene, where lodging accommodations are convenient to the waters.

The Oregon Electric Railway, climbing the hills which overlook Portland, traverses the length of the Willamette Valley, and its numerous trains of limited and local character furnish many delightful trips through this beautiful country.

Central Oregon

EAST of and separated from the Willamette Valley by the Cascade Mountains is a great plateau country which covers the center of Oregon. It is from 1,000 to 4,000 feet in elevation. Its general rolling surface is cut here and there by deep canyons, at the bottom of which flow crystal streams, and marked by the characteristic buttes which approach mountainous heights. To its west lies the Cascade Range, from which rise the snow-capped peaks of Mounts Adams, Hood, Jefferson, Washington, the Three Sisters and others. At their bases are deep, clear lakes, full of gamey trout of different varieties, and here also the hunter finds big game.



Promenade, 8300 Feet, Seaside



Cannon Beach, Pacific Ocean



A VACATION LAND RAILWAY



Lewis and Clark Salt Cairn, Seaside

The Oregon Trunk Railway, leaving the Spokane, Portland & Seattle Railway at Fallbridge, serves this great district, and terminates at Bend.

For much of the way the railroad passes through the deep canyon of the Deschutes River, reputed to be the best stream for trout in the Northwest. It climbs the canyon walls to the plateau, traverses a stock, grain and hay section, crosses Crooked River canyon on one of the country's high bridges (320 feet), and enters the edge of a great belt of pine forest which reaches well to the top of the mountains. Besides the Deschutes, the Metolius and Crooked Rivers are meritoriously famed for splendid trout fishing, as are the mountain lakes, Paulina, Davis, Suttle and Odell, easily reached from Redmond and Bend, enterprising cities with comfortable accommodations for tourists; in particular the Pilot Butte Inn at Bend is attractive in situation, design, and appointments, which invite protracted visits. In the primal forests, near the mountain, fishing and game retreats are unique resorts—Heising's at the headwaters of the Metolius River and Sundown Ranch, a "Dude Ranch," near Black Butte—address of both is Sisters, Ore.

Crater Lake is reached from Bend, over an interesting automobile road on which regular service is maintained during the summer.

SAVE THE FORESTS

Carelessness destroys great areas of priceless forests each year.

Put out matches, cigars and campfires.



Astoria and Columbia River



RESORT HOTELS AND FARES



CLATSOP BEACH HOTELS

Place	Name	Season and Capacity	Day	Week
Seaside, Ore.	Seaside Hotel.....	All Year... 250	\$4.50 up	American Plan
	Locksley Hall.....	" 40	3.00 "	\$16, Am. Plan
	Del Mar Apts.....	" 7	"	25.00
	Necanicum Inn.....	" 35	3.50 "	12.00 up
	Depot.....	" 45	2.00 "	10.00 "
	Rollins.....	" 20	2.00 "	10.00 "
	Broadway.....	" 35	1.50 "	10.00 "
	Colonial.....	" 30	2.00 "	10.00 "
	American.....	" 11	2.00 "	10.00 "
	Pacific View.....	" 26	2.00 "	10.00 "
	Beacon.....	" 27	2.00 "	10.00 "
	Natatorium Inn.....	" 15	2.00 "	10.00 "
	Kerwell.....	" 40	2.00 "	10.00 "
	Royal.....	" 16	2.00 "	10.00 "
	McGuire.....	" 40	.50 "	5.00 "
Gearhart, Ore.	Andora.....	" 30	3.00 "	20.00 "
	Simpson.....	" 15	3.00 "	20.00 "
	Three Gables.....	" 4	1.50 "	15.00 "
	Gearhart Hotel.....	" 175	5.00 "	American Plan
	Golf.....	" 30	1.50 "	\$10, Eur'n Plan

CANNON BEACH HOTELS

Eccla, Ore....	Warren Hotel.....	All Year...	30	\$3.50, \$4.00	\$25, Am. Plan
P. O.....	Arch Cape.....	"	*10	\$3.50	20, Am. Plan
	Cannon Beach.....	Summer...	*26	3.50	20, Am. Plan

NORTH BEACH HOTELS

Long Beach, Wn.....	Long Beach.....	All Year...	75	\$1.50 up	Special
	Driftwood.....	"	75	3.00 "	"
	Harvest Home.....	"	40	2.00 "	"
OceanPk., Wn.....	Taylor.....	"	50	2.50 "	"
Seaview, Wn.....	Seaview.....	"	60	3.50 "	"

CASCADE MOUNTAIN HOTELS, WASHINGTON

Carson, Wn....	Hot Springs Hotel..	All Year...	*85	\$3.00 up	\$18, Am. Plan
	Gov. Min. Springs..	June, Nov..	*35	4.00 "	25, " "
Cascades, Wn..	Moffett's Hot Spgs.	All Year...	*25	3.50 "	22, " "
Guler, Wn....	Guler.....	"	50	2.50 "	15, " "
White Salmon, Wn.....	"The Eyrie".....	May-Oct...	35	4.50 "	27, " "
	Colburn.....	All Year...	25	2.50 "	European Plan
	Washington.....	"	25	2.50 "	" "

CASCADE MOUNTAIN RESORTS—OREGON

Foley Springs, Ore.....	Foley Hot Springs..	All Year...	*20	\$3.50 up	\$21, Am. Plan
Belknap Spgs. Ore.....	Belknap Lodge.....	June, Oct..	*18	2.00 "	12, " "
McKenzie Bridge, Ore.	McKenzie Br. Hotel	Apr.-Oct..	24	2.50 "	15, " "
Vida, Ore....	Nimrod Hotel.....	All Year...	30	2.50 "	15, " "

*Star indicates number of rooms, otherwise number of guests.
For detailed information managers of hotels shown above may be addressed.

TENT HOUSES AND CAMPS

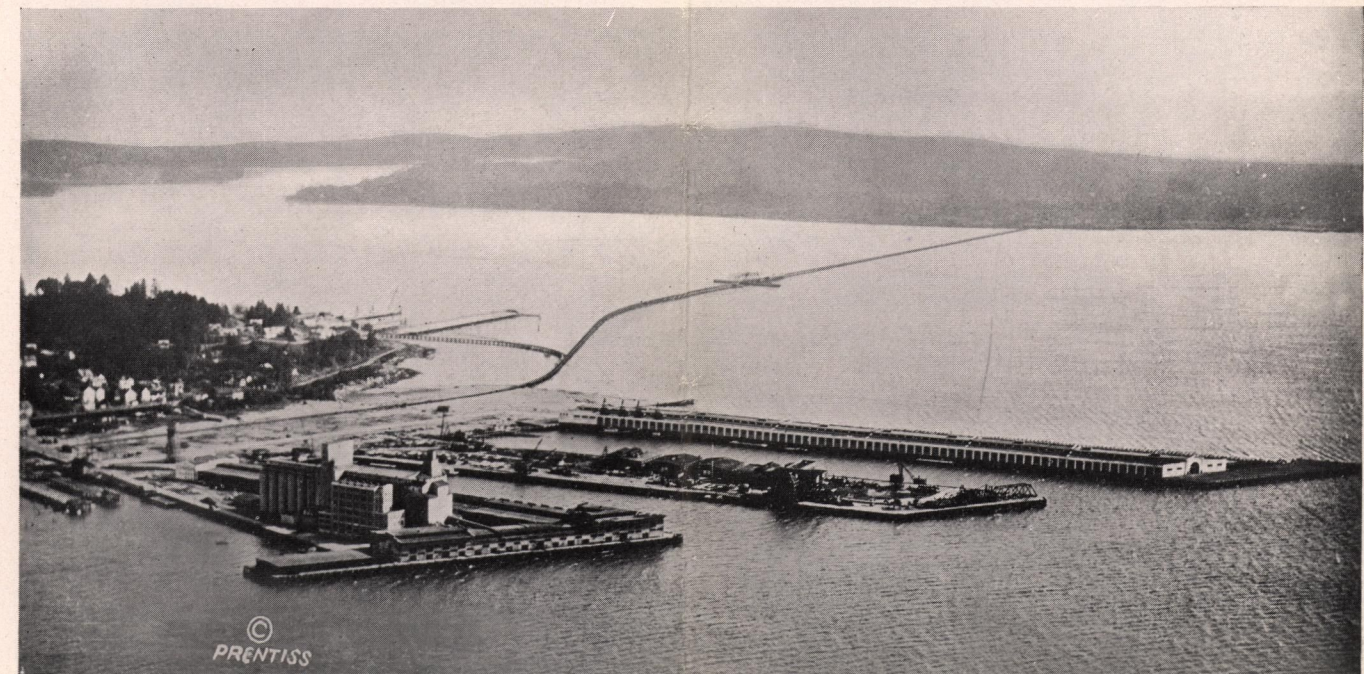
At Seaside, Ore.—Furnished tents with floors, beds, wood, water, light, etc., may be rented at moderate prices. Free camp grounds with water, light, etc., are provided by the city.

ROUND-TRIP FARES FROM PORTLAND

To Deschutes River Fishing Points

Coleman.....	\$9.40	Nathan.....	\$8.35
Frieda.....	8.35	North Jet.....	8.35
Jersey.....	8.75	Sherar.....	7.00
Kaskela.....	8.60	South Jet.....	8.85
Maupin.....	7.40	Tuscan.....	7.40
Mecca.....	9.75	Vanora.....	9.75

Tickets on sale every Saturday, May 12 to July 14, inclusive; return Monday following; also May 29, return limit May 31, and July 3, return limit July 5, 1923.



Astoria's Municipal Terminal, Columbia River and Young's Bay



RESORT EXCURSION FARES

SUMMER FARES TO CLATSOP BEACH AND NORTH BEACH POINTS

Round-trip fares from points shown below, and other stations in the Northwest will be in effect daily, May 18 to September 30, 1923, with return limit October 31. Stopover granted at any point.

WASHINGTON		OREGON		MONTANA	
Aberdeen	\$13.10	Albany	\$ 8.75	Moscow	24.95
Centralia	10.20	Baker	23.50	Stites	28.25
Colfax	23.45	Bend	18.50	Wallace	29.30
Davenport	28.40	Corvallis	9.25		
Dayton	19.90	Eugene	10.90		
Eureka	18.10	Forest Grove	6.35	Anaconda	\$37.95
Goldendale	11.90	Hillsboro	6.00	Billings	48.60
Kennewick	17.40	Hood River	8.45	Bozeman	42.30
Lyle	9.65	La Grande	20.70	Butte	38.00
Palouse	28.95	Pendleton	16.70	Deer Lodge	36.15
Pasco	17.50	Portland	5.00	Glendive	58.75
Pullman	24.50	Redmond	17.60	Great Falls	42.40
Ritzville	21.90	Salem	7.45	Hamilton	43.75
Seattle	14.90	The Dalles	9.60	Helena	37.95
Spokane	25.25			Kalispell	35.30
Tacoma	12.80			Lewistown	47.50
Vancouver	5.75			Livingston	43.40
Walla Walla	18.10			Miles City	55.25
Wenatchee	23.80	Coeur d'Alene	\$27.00	Missoula	32.60
White Salmon	9.10	Grangeville	28.90		
Yakima	21.40	Lewiston	24.10		

SPECIAL DAILY ROUND-TRIP FARES FROM PORTLAND

To Astoria, \$4.00.

To Clatsop Beach and North Beach Points, \$4.50.

In effect daily, June 16 to September 10, inclusive, to Clatsop Beach points, and July 21 to September 10 to North Beach points, 1923; return limit 30 days.

WEEK-END ROUND-TRIP FARES FROM PORTLAND

To Clatsop Beach Points and

North Beach Points, \$4.00.

In effect Friday, Saturday and Sunday, May 18 to September 30, 1923; return limit following Monday. Also in effect May 29 and 30, return limit May 31, July 3, 4, return limit July 5; Aug. 31, Sept. 1, 2, 3, return limit Sept. 4.



Vacation Time at Clatsop Beach

To Cascade Mountain Points:

Carson	\$2.80	Granddallies	\$4.55	Stevenson	\$2.65
Cascades	2.40	Hood	3.45	Underwood	3.50
Collins	3.00	Lyle	4.15	Wahclella	2.15
Cooks	3.20	Sepsecan	3.05	White Salmon	3.50

In effect Saturday and Sunday, April 15 to October 1, 1923; return limit following Monday. Also in effect May 29, 30, return limit May 31; July 3, 4, return limit July 5; Sept. 1, 2, 3; return limit Sept. 4.

CIRCUIT TRIPS

Fares shown above to Granddallies, Stevenson, Underwood and White Salmon, apply for tickets reading via the S. P. & S. Ry. in both directions, or by this line for the going trip and the O. W. R. & N. Co. for the return trip from opposite points across the Columbia River indicated below:

Granddallies.....	The Dalles	Underwood or
Stevenson.....	Cascade Locks	White Salmon.....Hood River

SUNDAY AND HOLIDAY ROUND-TRIP FARES FROM PORTLAND

To Clatsop Beach and North Beach Points, \$3.00.

In effect every Sunday, May 20 to September 30, also May 30, July 4 and September 3, 1923; return limit date of sale.

ROUND-TRIP FARES FROM PORTLAND

To Willamette Valley Points

	Daily	Week End		Daily	Week End
Albany	\$3.30	\$3.15	Forest Grove	\$1.50	\$1.10
Corvallis	4.00	3.55	Hillsboro	1.15	.85
Eugene	5.80	4.90	Salem	2.00	

Proportional fares to other points.

In effect: "Daily" fares every day, May 3 to September 30, 1923; return limit 15 days after sale. "Week End" fares, Friday, Saturday and Sunday, May 18 to September 30, 1923, and return limit following Tuesday.

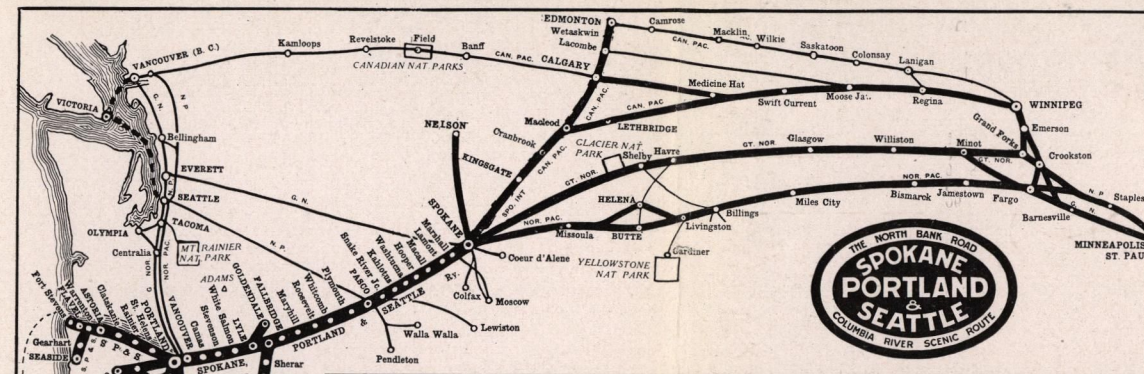
To McKenzie River Resorts

	15 Days	Season		15 Days	Season
Bear Creek	\$ 9.40	\$10.40	Foley Springs	\$12.40	\$13.40
Belknap Bridge	11.40	12.40	Hatchery	7.90	8.90
Belknap Springs	12.40	13.40	McKenzie Bridge	11.90	12.90
Blue River	10.40	11.40	Nimrod	9.65	10.65
Cook's Inn	9.90	10.90	Vida	8.40	9.40

Fares are for tickets routed via Oregon Electric Ry. to Eugene, thence McNutt Auto Stage Line, May 18 to September 16, 1923; "Fifteen Day" tickets on sale Friday and Saturday, return limit 15 days after sale, and "Season" tickets on sale daily, return limit September 30. "Season" tickets allow stop-over at any point on O. E. Ry.



TRAIN SERVICE—REPRESENTATIVES



TRAIN SERVICE

Portland-Spokane Line

The Spokane, Portland & Seattle Railway runs limited trains between Spokane and Portland, leaving each terminal morning and evening. Day trains carry observation parlor cars, dining cars, sleeping cars and coaches; the night trains observation, standard and tourist sleeping cars, dining cars and coaches. These trains carry sleeping cars between Portland, St. Paul and Chicago, moving east of Spokane via the Great Northern and Northern Pacific Rys. and Burlington Route. Local trains are run between Portland and Cascade Mountain resorts.

Portland-Astoria-Clatsop Beach-North Beach Line

Fast trains of observation parlor cars and coaches leave Portland morning and evening and in the early afternoon a train of coaches only, for Astoria, Gearhart and Seaside, with similar service returning. During the summer another limited train leaves Portland early Saturday afternoon, arriving Clatsop Beach points for dinner. North Beach points are reached by train, Portland to Astoria, thence connecting steamer across the Columbia and O. W. R. & N. train along the sea shore.

Portland-Redmond-Bend Line

Trains between Portland and Central Oregon make night trips in each direction, with sleeping cars and coaches.

Willamette Valley Line

The Oregon Electric Railway runs limited and local trains between Portland, Salem, Albany, Corvallis and Eugene; also frequent trains between Portland, Hillsboro and Forest Grove.

PASSENGER STATIONS

PORTLAND, ORE. S. P. & S. Ry., Union Station, Foot of Sixth Street.
Oregon Electric Ry., Oregon Electric Station,
Tenth and Hoyt Streets, and Jefferson Street
Station, Front and Jefferson Streets.

SPOKANE, WASH. Northern Pacific Station. Trains Nos. 3 and 4.
Great Northern Station. Trains Nos. 1 and 2.

REPRESENTATIVES

ASTORIA, ORE. J. M. BALLINGALL. General Agent
Spokane, Portland & Seattle Ry. Station.
PORTLAND, ORE. C. E. WARREN—Agent, Consolidated Tkt. Office
Third and Washington Streets.
L. F. KNOWLTON. City Pass. Agent
J. T. HARDY. Trav. Freight and Pass. Agent
Chamber of Commerce Bldg.

PORTLAND, ORE. G. F. DINWOODIE. Trav. Freight & Pass. Agt.
E. R. SCHULTZ. Trav. Freight & Pass. Agt.
Chamber of Commerce Bldg.
SAN FRANCISCO, CAL., F. R. FORBES. Special Representative
773 Monadnock Building.
SPOKANE, WASH. J. J. HOYDAR. General Agent, Davenport Hotel
E. H. BROOKS, City Pass. Agt., Davenport Hotel

The Spokane, Portland & Seattle, Oregon Trunk and Oregon Electric Rys. are affiliated with the Northern Pacific, Great Northern and Chicago, Burlington & Quincy Rys.

The representatives of these railroads named above, and at other points, will gladly furnish train schedules, quote passenger fares, make sleeping car accommodations, and give full details regarding tickets, or communications may be addressed to the undersigned.

WALDO G. PAINE,
Asst. General Freight and Passenger Agent,
SPOKANE, WASH.

R. H. CROZIER,
Asst. General Passenger Agent,
PORTLAND, ORE.

W. D. SKINNER,
Traffic Manager,
PORTLAND, ORE.