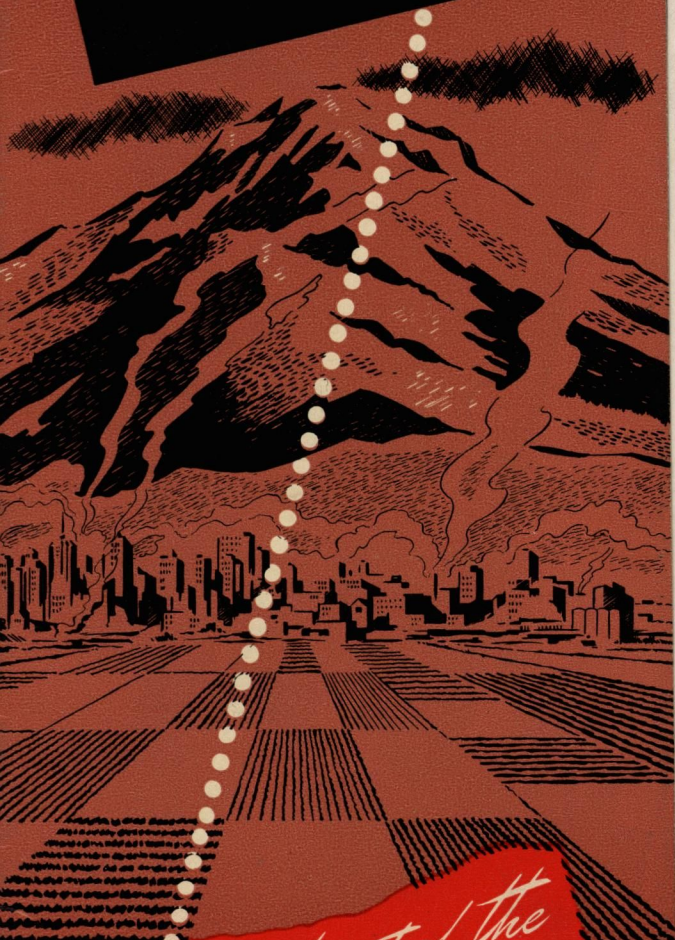
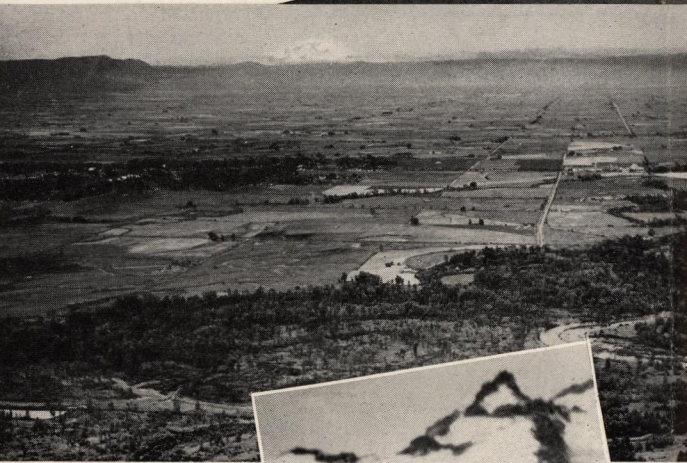


YAKIMA

Washington



*In the heart of the
Evergreen State*



Matchless scenic beauty is less than two hours driving time from Yakima.



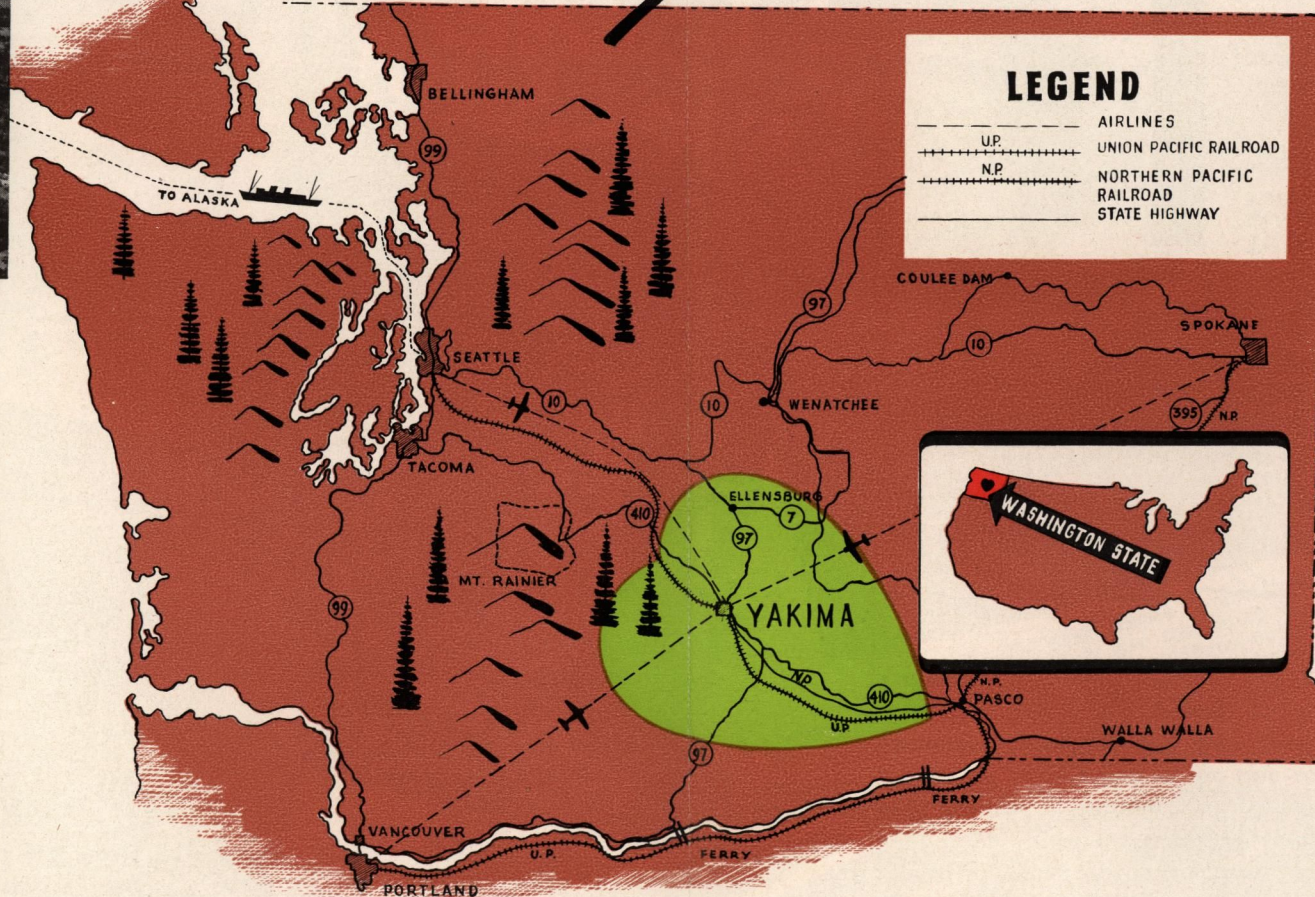
PRODUCTION VALUE—1945:

Yakima Valley (Comprising Yakima, Kittitas & Benton Counties.)

Apples	\$30,500,000
Hops	15,000,000
Pears	7,000,000
Peaches	2,700,000
Cherries	4,700,000
Prunes, Plums and Apricots	1,750,000
Grapes and Mint	1,398,275
Potatoes	9,000,000
Sugar Beets	3,140,000
Asparagus	1,250,000
Hay & Grain	4,500,000
Other Fruits & Vegetables	4,854,000
Dairying & Dairy Products	5,250,000
Livestock	5,869,000
Meats, Fresh & Smoked; By-Products	7,650,000
Poultry, Eggs, Turkeys	5,752,387
Wool	600,000
Dehydrated Fruits & Vegetables	6,135,000
Frozen Foods	3,126,000
Canned Fruits, Vegetables & Beet Sugar	12,000,000
Manufacturing	7,750,000

TOTAL 1945 PRODUCTION\$139,924,662

Here's Yakima!

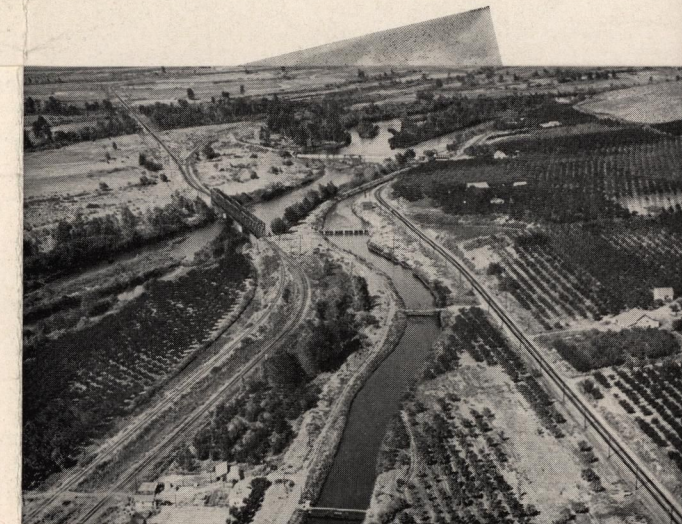


Forming a geographical hub between Spokane, Portland, and Seattle, Yakima is centrally located. You'll find Yakima an ideal headquarters from which you can plan and make side trips.

Yakima is served by: the Northern Pacific Railway, the Union Pacific Railroad, Northwest Airlines, Washington Motor Coach System, and is the center of a state-wide highway system—U. S. highways No. 410 and No. 97, connecting with all western highway systems.

YOU'LL LIKE TO LIVE IN YAKIMA

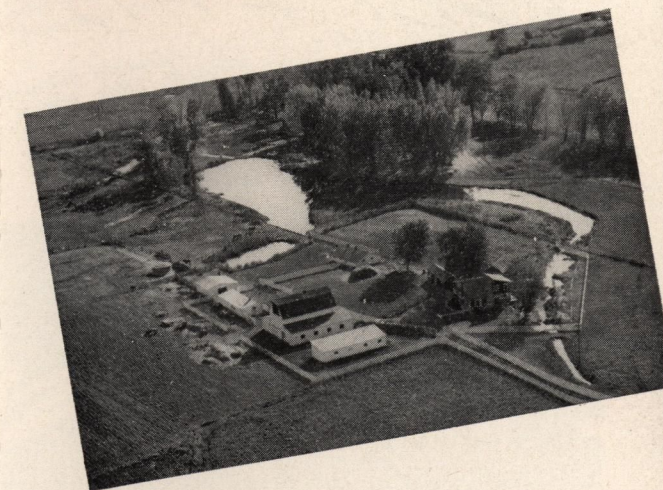
- ★ Year around agricultural activity
- ★ 55 acres of parks and playgrounds
- ★ 46 churches of leading denominations
- ★ 1065 feet above sea level
- ★ Only 8 inches of rain annually
- ★ 60% of homes are owned by occupants
- ★ Per capita buying power is
DOUBLE the national average
- ★ Trading center of 183,750 population



Growing and processing of diversified crops provides seasonal jobs for an army of workers. Gross returns total \$140,000,000 last year.



Small farm operators are practically self-sustaining.



Farms, small and large, create Yakima's basic wealth. The valley's rural homes are modern and attractive. Water is life. Yakima valley farms consistently set superior production records.

There's a

...BUSINESS...ECONOMIC...INDUSTRIAL...AGRICULTURAL...

Potential in Yakima

Come West . . . to new frontiers, new opportunities, and the expanding possibilities of a growing NEW country. Here is one of the richest, largest irrigated areas in the United States. See the farms, the crops, harvesting, processing, and packaging . . . there's a place for you and your family in this busy, prosperous picture.



There are no "dry years" in Yakima! In a half-century there have been no general crop failures because water for the 571,228 irrigated acres is stored in mountain reservoirs to be used as needed.



The present 50,000 population of Yakima's metropolitan area will increase 50% as new land developments, now well under way, set the course for industrial, agricultural and business expansion.



Irrigation plus sunshine and fertile soil has made the Yakima Valley productive beyond conception. Irrigated orchards have yielded more than \$1000 yearly income per acre. The income from tree fruits topped sixty million dollars in 1945.



Fresh opportunities arise for men of vision. The availability of building sites, raw materials, abundant electric power, and transportation facilities invite further industrial expansion.



Millions of dollars worth of fruits, vegetables, beet sugar, grain, meat, dairy products and allied crops flow annually through Yakima's processing plants. 58,000 carloads of all commodities went to the world-wide markets in 1945.



Yakima is a city of homes and good living. Cultural facilities include 46 churches, 11 public schools, 6 parochial and private schools, a junior college and the privately-endowed J. M. Perry Trade school, foremost of its kind in the West.

There's a Welcome for You in Yakima

Come to Yakima for a vacation or come to stay. You'll find that real hospitality awaits you. This is truly the "land of new frontiers" both in a business way and as a vacation-land, too. Many who came as casual visitors have stayed to prosper.

Yakima is the Richest and Largest irrigated area in the U. S.

Yakima
WASHINGTON

of the 3072 counties in the United States Yakima County stands

7th* in production of fruits and nuts

1st* in production of pears and apples

8th* in production of peaches

☆ FIGURES FROM U. S. CENSUS 1940

4th* in production of potatoes

3rd* in production of cherries

8th* in production of all vegetables



YAKIMA CHAMBER OF COMMERCE



14,408 feet of snow-crowned grandeur greets you when you motor to majestic Mt. Rainier and Yakima Park, just two hours from Yakima. Here are fine year-round skiing, state maintained camp grounds, and breath-taking scenic beauty.

Washington is famed for wide, safe highways winding through the splendor of magnificent forests with inviting stop-over stations at scenic points of interest. Deer and elk are frequently visible.

The great Grand Coulee Dam, largest man-made structure in the world, 4300 feet long, 550 feet high and containing 11,250,000 cubic yards of concrete, staggers the imagination of world travelers. Motorists making a three-hour drive northward from Yakima are repaid with this unforgettable sight!

A net work of canals will carry impounded Columbia river water from the dam to irrigate nearly ONE MILLION acres (size of Delaware) in central Washington. Yakima will centralize the shipping and storage of produce from these acres since the best land developed will adjoin Yakima's valleys.

Yakima

WASHINGTON

Yakima centers a state-wide system of broad highways that take you to nationally famous points of interest in this great "Evergreen State" of Washington. Thousands of sightseers make Yakima headquarters for trips to nearby attractions including Grand Coulee dam and Mt. Rainier National park.

Drive leisurely to trout filled mountain streams or glistening lakes, through stands of timber to scenic playgrounds and national parks. Camp, if you like, under pines in regularly patrolled, well maintained camping sites. Hotels, auto courts, and trailer camps welcome your arrival in this friendly city.

True Western Hospitality Awaits You

TO LIVE

Mild winters and delightful summers have given Yakima an envied climatic record in which the sun shines 235 days each year, with an average rainfall of only 8 inches. Yakima's above average prosperity is reflected in the fine schools, libraries, churches, and fine residential districts. You'll be proud to live in Yakima!

TO PLAY

Include Yakima on your trip through the West. Bring your golf clubs, fishing gear, ski togs, guns and camera. Historic landmarks, pioneer forts, and early Indian battlegrounds are easily accessible to the traveler. Stay as long as you can in Yakima and enjoy this friendly city, in a friendly climate, the center of the Northwest's playground.

Send For The New Industrial Book

This is a land of new frontiers. Agricultural and industrial development and progress have opened tremendous opportunities.

Prospective settlers or investors are invited to use the coupon below for more detailed information outlining the possibilities.

To the YAKIMA CHAMBER OF COMMERCE
Chamber of Commerce Building
Yakima, Washington.

Dear Sirs:

Please send me without obligation your booklet that describes in detail the opportunities now developing in and near Yakima.

NAME _____

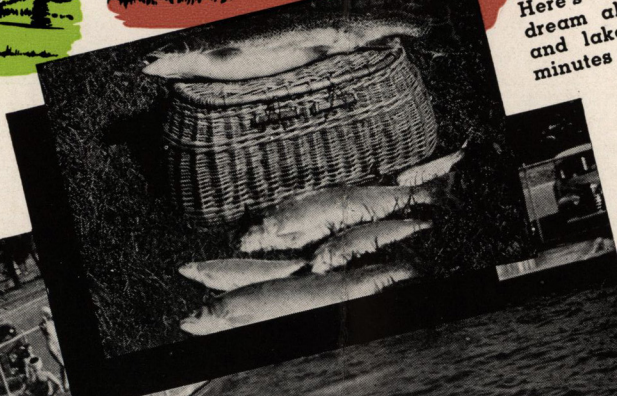
ADDRESS _____

CITY _____ STATE _____

I am especially interested in _____



Here's fishing that you dream about—both stream and lake — within thirty minutes drive from Yakima.



Swimming pools are an important part of the 55 acres of public parks and playgrounds in Yakima.



Seasonal rodeos, fairs and Indian celebrations carry a flavor of the old west. Dude ranches in proximity are open the year around.

