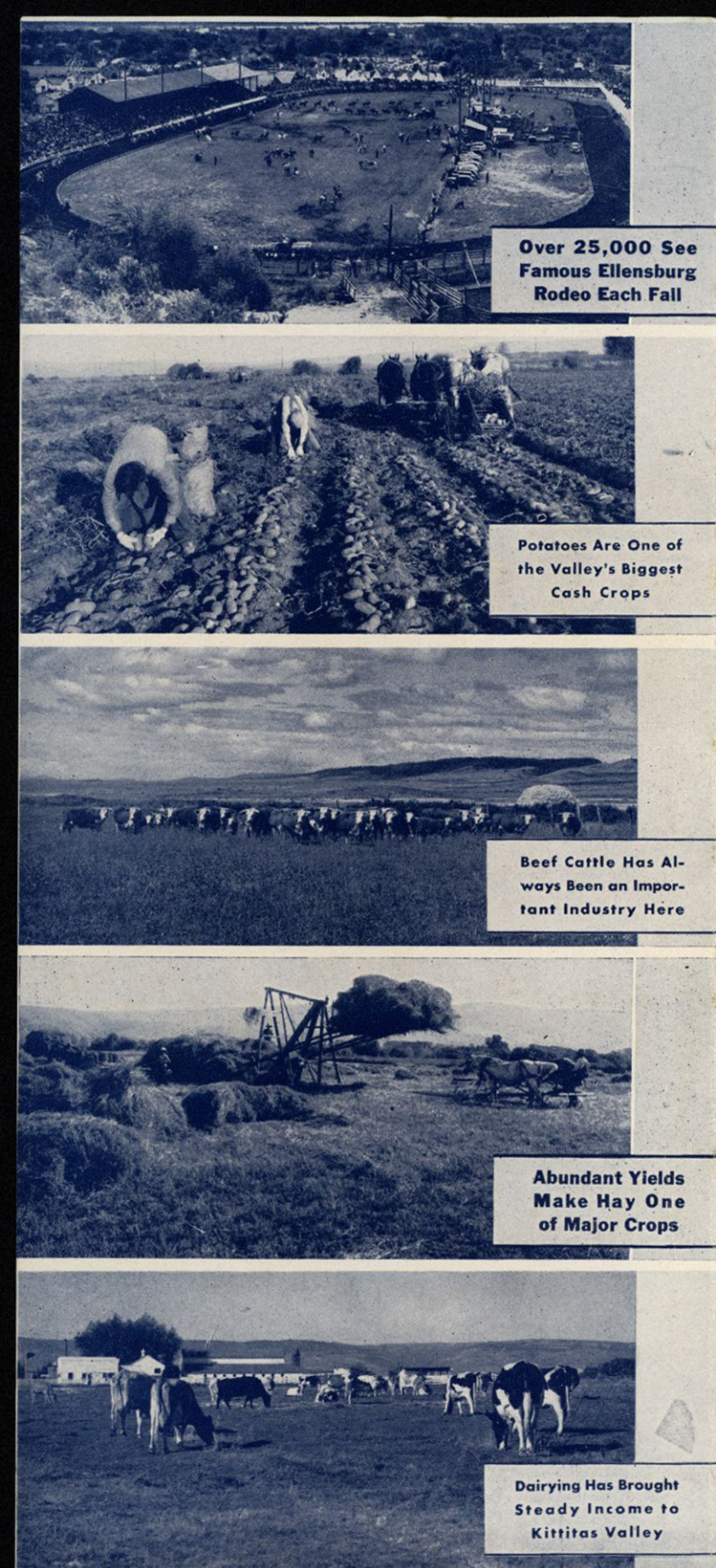


# ELLENSBURG WASHINGTON



IN THE KITTITAS  
*"Valley of Abundance"*





## ELLENSBURG . . .

### The Hub of the State Highway System

Ellensburg is a progressive, growing city located in approximately the geographical center of Washington, has a population of 7,500 and is surrounded by the Kittitas Valley (the upper valley of the Yakima) the richest diversified agricultural section of all the irrigated areas of the Pacific Northwest. It is the county seat of Kittitas County.

Business is supported chiefly by agriculture and related industries, and is supplemented substantially by sawmills, logging in adjacent forests, two large creameries, cheese factory and cannery, a large meat packing company, truck, bus and railroad operations, a brewery, seed pea cleaning plant, a starch plant, and various warehouses for handling the valley crops.

The payroll, maintenance outlay and money spent by students of the Central Washington College add materially to the business of Ellensburg.

The Washington Motor Coach Company maintains its big repair and overhaul shops for its entire system at Ellensburg and many of its drivers live here. Ellensburg is also the home terminal for the drivers of many of the cross-state truck and tanker companies.

The main lines of the Northern Pacific and Chicago, Milwaukee, St. Paul and Pacific Railroads each traverse the valley. Ellensburg is the hub of the State Highway system, with modern roads radiating to all parts of the State. It is the Central Washington terminal of the Washington Motor Coach System.

### Education

The Central Washington College of Education is located in Ellensburg. This college has a high rating in the American Association of Teacher Colleges and credits received by students here can be transferred to almost any large institution without loss. Three-year and four-year diplomas are offered, a B. A. degree in Education being granted to those completing the four-year course.

The city schools are part of a consolidated system and include a Senior High School, Junior High School and two grade schools. They have an enrollment in excess of 2,000. In addition, there is a fine Catholic Parochial School in the city and there are many fine rural schools all over the valley.

### Ellensburg Rodeo

The Ellensburg Rodeo, first started in 1923 as the amusement feature of a small County Fair, has grown to be one of the largest in America. It has extensive grounds and plays to over 25,000 people each year. The Fair has many fine large exhibit buildings for agriculture and horticulture, livestock and home economics.

The Rodeo and Fair are always held on the same dates each fall, Saturday, Sunday and Labor Day. The Rodeo, controlled by local stockmen and business men, draws its contestants from the real range hands of the West as well as the professional Rodeo performers. The Indian spectacle held in connection with the Rodeo brings over a thousand Indians to the tepee village on the grounds and is one of the most colorful showings of the old primitive long hair Indians that can be seen any place in America.

## ELLENSBURG . . . The Biggest Little City In the State of Washington



(1) One of Ellensburg's three fine show houses. (2) In the yards of the Ellensburg Lumber Company, one of the city's biggest industrial plants. (3) Entrance to library of Central Washington College of Education. (4) Roadside museum in Ginkgo Petrified Forest. (5) Ellensburg's municipally-owned swimming pool. (6) Modern home of city government, housing all city offices. (7) Ellensburg Golf Club maintains excellent course. (8) Generators in Ellensburg's city-owned hydro-electric plant.

## ELLENSBURG—In Kittitas County, Washington

AREA—800 acres.

ALTITUDE—1500 feet.

### CLIMATE—

Mean average temperature, 46.8 degrees F. Precipitation, 9 inches yearly. Extensive irrigation projects insure abundant moisture.

### POPULATION—

1940 Census—5,944.  
1943 Estimate—7,500.

### PUBLIC UTILITY PATRONS—

Light—1800.  
Water—2000.  
Telephone—2100.

### LIGHTING SYSTEM—

Municipally-owned Hydro-Electric Plant.  
Value, \$553,373.66.  
Bonneville—Second lowest in state.

### WATER—

Municipal deep well and gravity systems.  
Soft, pure, excellent tasting.

### ASSESSED VALUATION—

1942—\$2,921,870.  
Tax Rate—Municipal, 15 mills.  
Total Levy—39.5 mills.

### VALUE OF MUNICIPALLY-OWNED PROPERTY—

\$966,959.00. No general bonded indebtedness.

### TRANSPORTATION—

Northern Pacific.  
Chicago, Milwaukee, St. Paul & Pacific.  
Washington Motor Coach System.  
On two cross-state highways.

### BANKS—

Two—Total deposits, December 31, 1943, \$7,500,000.00.

### SAVINGS & LOAN ASSOCIATION—

One—Savings accounts, December 31, 1943, \$500,000.00.

### HOTELS—Seven.

### CABIN CAMPS—Ten.

### NEWSPAPERS—

Ellensburg Daily Record.  
Ellensburg Capital.

### HOSPITALS—Three.

### CLINICS—Two.

### SCHOOLS—

Central Washington College of Education.  
Senior High School.  
Junior High School.  
Two Grade Schools.  
Parochial School.  
(800 students in College).  
(2000 pupils in public schools, 1942-43 term).  
(115 pupils in Parochial school, 1942-43 term).

### LAND PRICES—

Non-irrigated lands (bottom lands and foothills) \$10 to \$15 per acre.  
Irrigated lands—\$50 to \$250 per acre depending upon improvements.

### AMUSEMENTS—

Dude ranches.  
Three moving picture theaters; seating capacity, 1800.  
Golf Course near city.  
Ellensburg Rodeo, Saturday, Sunday and Labor Day each year.  
Swimming pools, outdoor municipal and indoor Y. M. C. A.  
Tennis courts.  
High School and College auditoriums, play fields and gymnasiums.  
Municipal parks, play grounds and kiddies wading pool.

### BUSINESS ASSOCIATIONS—

Ellensburg Chamber of Commerce.  
Automobile Club of Washington.  
Junior Chamber of Commerce.  
Ellensburg Credit Bureau.

### SERVICE CLUBS—

Rotary, Kiwanis, Altrusa, Business and Professional Women.

### CHURCHES—

Methodist, Christian, Presbyterian, Baptist, Catholic, Episcopal, Christian Science, Latter Day Saints, Free Methodist, Lutheran (two), Nazarene, Pentecostal, Seventh Day Adventist.

### PUBLIC LIBRARIES—

One—Total volumes, 8,500.

### FARM COOPERATIVES—

Kittitas County Dairymen's Association.  
Kittitas Farmers' Company.  
Kittitas County Farm Bureau.  
Kittitas Valley Potato Growers, Inc.  
Poultry and Egg Producers' Association.  
Washington Cooperative Egg and Poultry Association.

### WELFARE ORGANIZATIONS—

Young Men's Christian Association.  
Young Women's Christian Association.  
American Red Cross.  
Camp Fire Girls.  
Boy Scouts.  
Girl Scouts.  
Kittitas County Tuberculosis League.

### OTHER TOWNS IN COUNTY—

Cle Elum	Population	3,000
Roslyn	"	2,100
South Cle Elum	"	250
Easton	"	250
Thorp	"	250
Kittitas	"	450
Ronald	"	419





Looking North on  
Pearl Street in Down-  
town Ellensburg



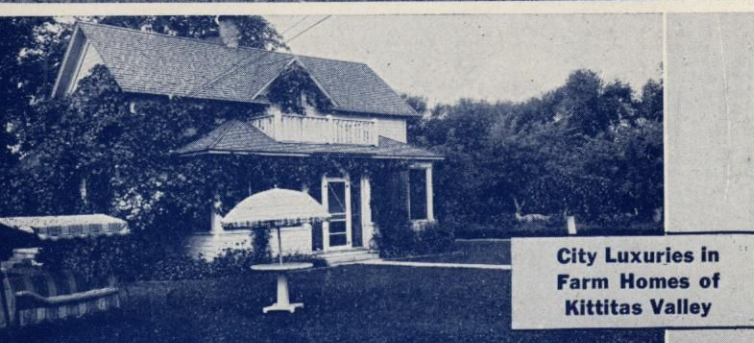
A Scene on the  
Yakima River Near  
Ellensburg



The New Kittitas  
County Hospital in  
Ellensburg



Hunters Find Big  
Game in Hills of  
Kittitas County



City Luxuries in  
Farm Homes of  
Kittitas Valley

# Ginkgo Petrified Forest

## One of the Greatest Geological Wonders

Visitors will marvel at the changes nature has made in the area which is now known as the Ginkgo Petrified Forest. The once dismal swamp, which became the burying ground of an entire forest as the lava flow covered the trees, contrasts strangely with the timberless, arid region, where now only sagebrush and desert flowers can survive.

The forest is easily accessible. It is on the main highway, about 26 miles east of Ellensburg. It is the only one in the United States directly on a transcontinental highway. Petrified logs may be seen from the road. Convenient parking space along the highway permits tourists to stop, and well-built paths lead to the various petrified logs. In a matter of a few minutes visitors may examine most of the different types, all in a setting provided by nature, buried in the lava flow that caused their preservation, and partially exposed by the subsequent ages of erosion.

The sacred Oriental Ginkgo tree, after which the forest is named, the living specimens of which have descended from the sacred gardens in the Orient, is to be found in petrified state only in this forest. Oaks, maples, walnuts, red gums, spruce, sequoias, some 10 feet in diameter, with evidence of having been 100 feet in height, occur as specimens in the Ginkgo Petrified Forest.

The petrified formation occurred ten to thirty million years ago. The logs were encountered by flowing lava in an ancient lake which cooled the lava, and saved the trees from burning. Later ten other lava flows covered the entire area, all of which have been removed by action of the Columbia river. The wood has now changed to opal, but the grain and wood structure are perfectly preserved. It is believed the Ginkgo Petrified Forest is the only petrified forest where the trees were preserved in lava.

In a sheltered cove on the Columbia river, about two miles from Vantage, are what are known as the Picture Rocks. Many centuries ago, according to legend, Indian tribes carved the records of their activities and adventures in these rocks, and though crude, time and weather have not obliterated them. The pictures may be visited by tourists. A well-built trail, high along the river, makes an interesting hike to the scene of one of the rarest of historical monuments.

# Ellensburg . . .

## The Northwest's Richest Diversified Irrigation Area

### Acreage and Yield of Agriculture Products of Kittitas Valley (1943)

Crop	Total Acres	Ave. Yield Per Acre	Maximum Per Acre
Wheat	6,750	40 bu.	85 bu.
Potatoes	6,720	11 tons	21 tons
Sugar Beets	750	12.2 tons	22.4 tons
Oats	11,840	70 bu.	120 bu.
Barley	6,656	50 bu.	95 bu.
Corn for Processing	4,054	4.2 tons	7 tons
Peas (dry)	2,036	3/4 ton	1.2 tons
Alfalfa	25,402	3.0 tons	6 tons
Clover	7,922	2.5 tons	5 tons
Other Hay	25,000	3.0 tons	6 tons

### RECREATION—

Hunting—Elk, Deer, Bear, Chinese Pheasants, Hungarian Partridge, Grouse.

Fishing—Steelhead, Cutthroat, Rainbow, Eastern Brook Trout, Whitefish, Silvers, in hundreds of miles of fishing streams and rivers and scores of lakes.

Skiing—Many excellent hills.

### POINTS OF INTEREST—

Ginkgo State Park—28 miles east, near Columbia river. Petrified trees.

Gold Mines—Swauk Creek, 25 miles north.

Storage Reservoirs—Lakes Cle Elum, Kachees, Keechelus and Easton.

Central Washington College of Education Campus—In Ellensburg.

Mt. Rainier National Park—128 miles via Yakima and Naches Pass.

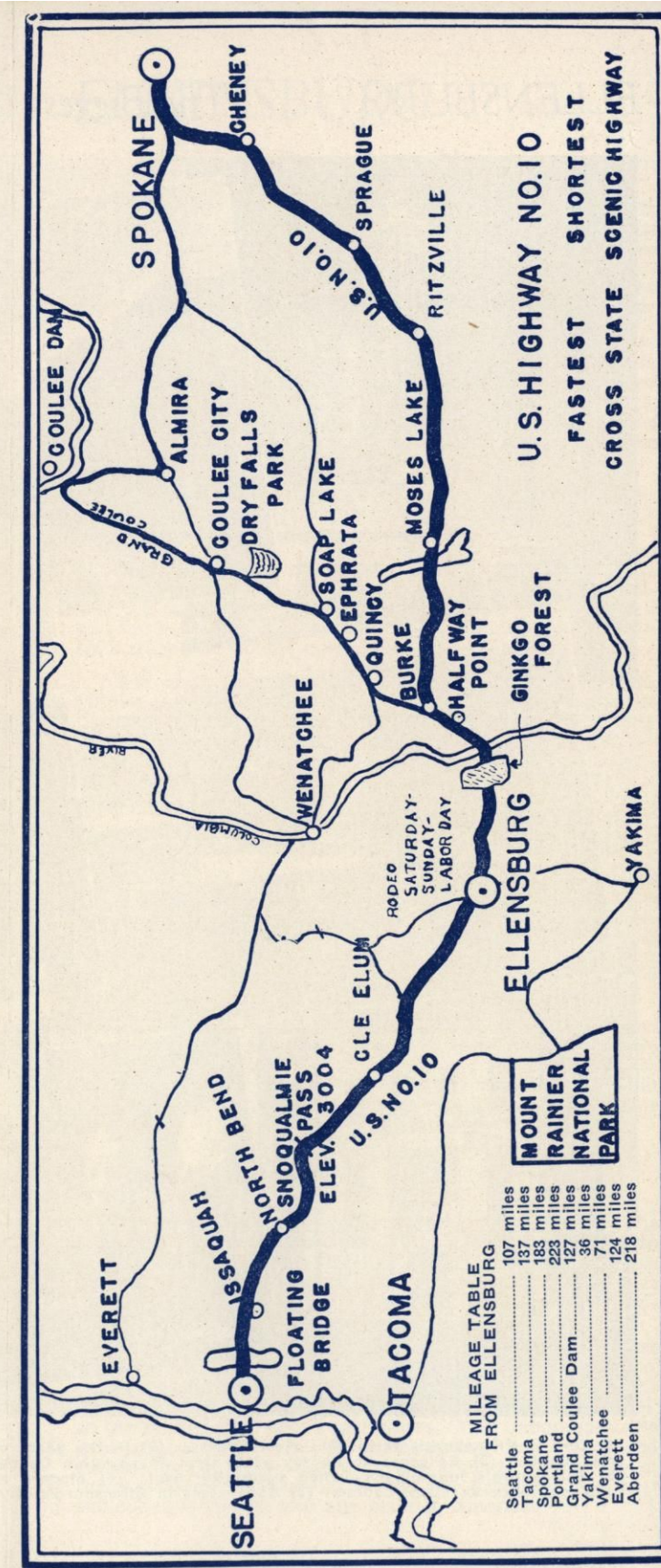
Grand Coulee Dam—Largest man-made structure in the world. 127 miles.

Dry Falls State Park—On route to dam. Old bed of Columbia. Interesting, spectacular.

Swauk Recreational Area.

For further information about developments in any of these lines, write to the Ellensburg Chamber of Commerce, Ellensburg, Washington.

RECORD PRESS





# ELLENSBURG ELLENSBURG

## WASHINGTON WASHINGTON



IN THE KITTITAS IN THE KITTITAS  
*"Valley of Abundance"* *"Valley of Abundance"*