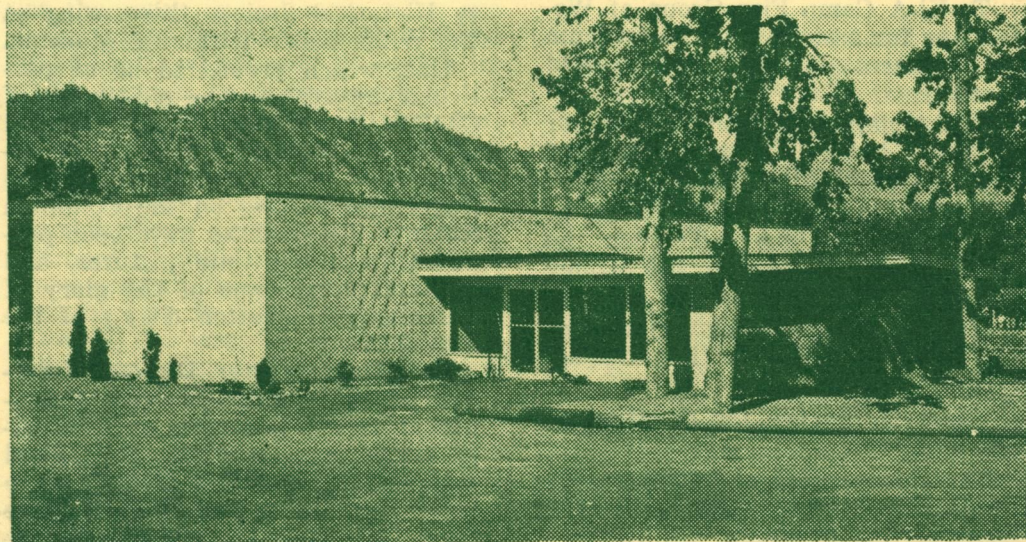


CHELAN COUNTY HISTORICAL SOCIETY NEWS BULLETIN



VOLUME II — NUMBER 1

MAY, 1960

TONK PAINTINGS ON EXHIBIT MAY 22 - JUNE 5

The Historical Society is pleased to announce that Ernest Tonk well-known California artist, will have on exhibit 12 of his paintings at the Willis Carey Historical Museum, May 22 to June 5. Five of Mr. Tonk's paintings now hang in the display rooms of the museum, however the 10 oil paintings and two watercolors to be on exhibit, have never been exhibited before and include such paintings as "Refreshing Depths," "The Midnight Stage," "Over Yonder" and "Packing In."

There is no admission charge to Tonk's first Washington exhibit. Prior to this he has exhibited his paintings at the Laguna Beach Art Association, Glendale Art Association, Grand Central Galleries, New York, and Gainsborough Galleries in Calgary. Following this exhibit the

paintings will be shown at the Gainsborough Galleries, Calgary, Canada.

These paintings will be of special interest to the people of Chelan county, since many of the background scenes depict this area, because Mr. Tonk lived in Cashmere several years before moving to California.

Mr. Tonk was born in Chicago, and studied art at the Chicago Art Institute. He is a member of the Glendale Art Association, the Grand Central Art Galleries and the Laguna Beach Art Association.

A reception honoring Mr. and Mrs. Tonk will be held at the museum, Tuesday, May 24 from 7:30 to 10 p. m. Members of the society and their friends are invited to attend this worthwhile occasion. All the paintings on exhibit are for sale.

OUR THANKS TO:

Velma Burbank and the Ladies that have volunteered to be the hostesses at the museum.

Ta-Ki-A Camp Fire Group of Wenatchee for assisting at the museum as hostesses during February and March.

Eva Anderson for 14 books for our reference library, on Pioneers of Central Washington, Indians, etc.

Ralph Gray and Carpenters of Local No. 2205 for work on the large display case and to Ira Nunley and Bob Fallis for painting it.

Homer B. Splawn for donation of the first unit of the low display cases.

Elizabeth Barnes for donation of one low case.

The Garden Club of Cashmere for the donation of the shrubs for the front of the museum.

The Lions Club of Cashmere for building the forms for the curbing in front of the museum and donating money to buy the cement for curbing and sidewalk.

Harry Ruyle for the hand turned walnut flag bases.

The Rotary Club of Cashmere for a cash donation of \$250.

Mrs. Celia Ann Dick of Nespelem, Washington, for a picture of Chief John Harmelt.

All that have helped at the museum and all that have given or loaned material to make our displays more interesting and complete.

WANTED

Any old manuscripts including letters, journals, diaries, etc., pertaining to the history of the Northwest.

A pot-bellied stove.

Any articles used in an old-time grocery store.

Programs on Columbia River and Holy Land Draw Good Attendance

Two outstanding programs have been presented by the Chelan County Historical Society this spring at the Willis Carey Historical Museum.

One, which proved to be of particular interest to the old-timers of Chelan County, was the illustrated lecture by William Meikle, of Wenatchee, who showed slides of "Early-Day Steamboating on the Columbia River." These slides have been produced from old time pictures, and bring to mind some of the glory of the almost-forgotten days of the steamboat.

Mr. Chapin Foster, Director Emeritus of the Washington State Historical Society presented an illustrated travelogue on "The Holy Land Today." Mr. and Mrs. Foster have recently returned from an extensive tour of the Holy Land and surrounding countries and had many beautiful colored slides. Mr. Foster presented the world problems that centered in that area and challenged our thinking to try to find answers to these problems.

Both of these interesting programs attracted a large number of people to the museum and are of a type the Historical Society is striving to bring to the community.

NEW CASES

Those visiting the museum recently have noticed the new low-type floor display cases in the main room. R. D. Campbell, of Wenatchee, started building them last fall but was unable because of illness to continue. The Historical Society is deeply indebted to Clyde Decker, of Cashmere, who took over the project and has built the remaining 16 cases.

Another improvement is the new metal Fire door between the main room and the lobby making your museum completely fireproof.

HISTORICAL BOOKS OFFERED FOR SALE

The Historical Society has a large selection of historical books for sale at the museum and more titles are being added from time to time. Some that are in stock are: **Kamaikin** by A. J. Splawn, an early history of the settlement of Central Washington; **Western Birds** by R. T. Congdon, a very excellent book for those interested in our feathered friends; **Columbia River Archaeology** by Emory Strong, a helpful handbook for those interested in Indian artifacts; **Nothing in Life Is Free** by Lucille McDonald, the story of the first wagon train over Natches Pass; and many, many others.

DUES CURRENT?

Many of our members have not yet renewed their memberships in the Chelan County Historical Society.

October 1st was the renewal date and each member, if he has not done so, is urged to send in his dues as soon as possible. The dues are \$2 annually or \$100 for a life membership. All money received has been used to complete the museum and build displays and cases. Each member receives the News Bulletin and a 15% discount on all items sold at the museum souvenir counter. Dues should be sent to the treasurer, Robert Eddy, at Cashmere.

MUSEUM HOURS

This summer the museum is again being kept open by volunteers. The hours are from 1 to 5 p.m. each day. There have been increasingly large numbers of groups from schools, Boy Scouts, Cub Scouts, Blue Birds, Camp Fire Girls, 4-H and others coming to visit.

Addition of Coffeemakers, New Chairs, Improves Meeting Facilities

Thanks to the efforts of the Blewett Rock Club, and a few other interested individuals, there are 75 new steel folding chairs for use at the Museum. Three rock auctions were held by the club with the proceeds being used to buy these chairs.

Two new 72 cup coffee percolators have been secured by the saving of coffee bands by many people of the community. We wish to say thank you to everyone that brought in M. J. B. bands.

The museum building is available free of charge for group meetings and this new equipment helps make our museum useful to the people of Chelan County. Permission for meeting at the museum may be secured from the trustees.

Assay Office Added To Museum's Pioneer Village

The pioneer village at Museum Park now has one more building with the rebuilding of the Assay Office from Blewett Mines. This log structure built at Blewett in the 1870's was in the path of the new highway but was saved from destruction by the efforts of the Historical Society. As it was dismantled each log was marked so it could be reassembled in its proper place. The Cashmere Firemen hauled the logs to the museum grounds. It is being restored and equipped as it was when the Blewett Mines were in full operation. Owen Kinnard was in charge of the rebuilding, and he has been assisted by several others including Walt Muffley, Claire Smith and Bob Enlow.

COMPLIMENTS
OF
JAMES M. GREENE INSURANCE AGENCY

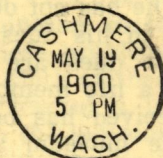
BLEWETT HOTEL

CASHMERE
"YOUR HOME
AWAY
FROM HOME"

SHIPLEY'S CAFE

CASHMERE
Take Your Family
Out To Dine
GOOD MUSIC
FAULTLESS FOOD
JOHN ANDRIST

Chelan County Historical Society
CASHMERE, WASHINGTON



Mr Click Relander
1212 North 32nd Ave
Yakima, Wash.