

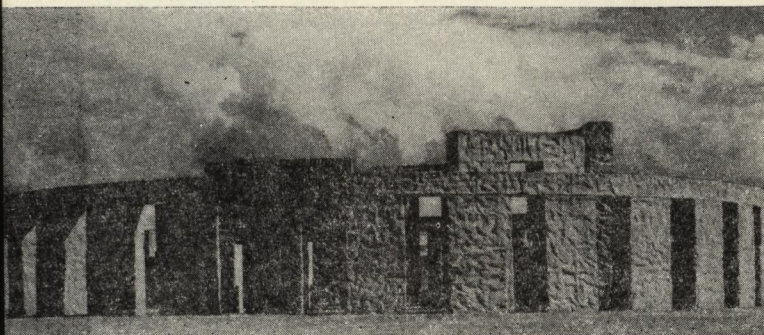
Highway 97 Ferry

Operating between
MARYHILL, WASH. and BIGGS JUNCTION, ORE.

24-HOUR SERVICE

15-CAR CAPACITY

COAST GUARD APPROVED
114-TON STEEL BARGE



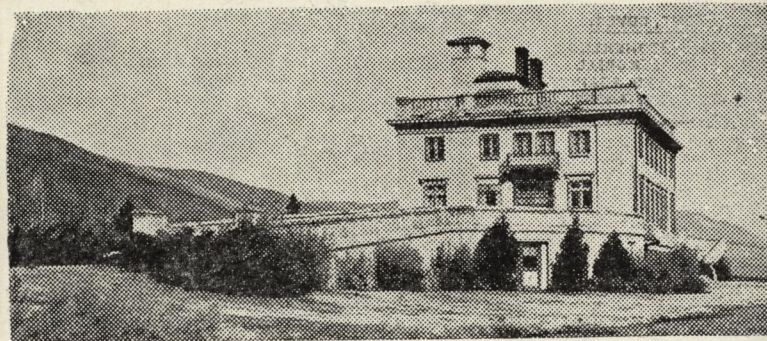
MARYHILL STONEHENGE WAR MEMORIAL

SIX HUNDRED FEET ABOVE THE MARYHILL FERRY LANDING IN THE STATE OF WASHINGTON STANDS THE UNIQUE, IMPOSING MEMORIAL BUILT BY SAMUEL HILL TO HONOR THE WORLD WAR I CASUALTIES FROM KLICKITAT COUNTY.

THE STRUCTURE IS PATTERNED ON THE PREHISTORIC BRITISH STONEHENGE, NOW A FAMOUS RUIN WHICH STILL MAY BE SEEN ON THE PLAINS NEAR SALISBURY, ENGLAND. ON A VISIT THERE IN 1918 SAMUEL HILL WAS TOLD THAT STONEHENGE HAD PROBABLY BEEN USED BY THE EARLY INHABITANTS OF GREAT BRITAIN AS A PLACE TO MAKE HUMAN SACRIFICES TO THEIR GODS OF WAR. IT OCCURRED TO MR. HILL THAT THE WORLD WAS STILL MAKING THE COSTLY SACRIFICES WHICH WARS DEMAND AND TO BRING HOME THIS LESSON HE CONSTRUCTED THE MARYHILL STONEHENGE MEMORIAL. THE MONUMENT WAS DEDICATED UNDER THE AUSPICES OF THE AMERICAN LEGION ON MAY 30, 1929.

THE ARCHITECTURE AND PRECISE PLAN OF THE STRUCTURE WAS ARRIVED AT AFTER EXTENSIVE STUDY. LEADING AUTHORITIES ON ARCHAEOLOGY, ASTRONOMY, AND ENGINEERING COMBINED THEIR KNOWLEDGE TO DUPLICATE AS NEARLY AS POSSIBLE THE ORIGINAL SIZE AND DESIGN OF THE ANCIENT MEGALITHIC RUINS IN ENGLAND. CONTAINING TWO MILLION POUNDS OF REINFORCED CONCRETE, THE MEMORIAL MEASURES 108 FEET ACROSS. THE OUTER CIRCLE CONSISTS OF 30 PILLARS 16 FEET IN HEIGHT, THE INNER CIRCLE CONSISTS OF 40 PILLARS NINE FEET HIGH. A MASSIVE ALTAR STONE STANDS IN THE INNER COURT. ERECTED TO THE EAST OF THE MAIN STRUCTURE AND OUTSIDE OF THE OUTER CIRCLE IS A TALL SLENDER PILLAR VARIOUSLY KNOWN AS THE FRIAR'S HEEL, THE HELE (OR SUN STONE), OR THE DEVIL'S THUMB. ONCE EACH YEAR ON THE DAY OF SUMMER SOLSTICE, USUALLY JUNE 21, THIS PILLAR CASTS ITS SHADOW ACROSS THE ALTAR IN THE INNER COURT, AN OCCASION WHICH IS SAID TO HAVE BEEN CELEBRATED WITH HIGH CEREMONY BY THE ANCIENT PEOPLES OF BRITAIN AND STILL TODAY OBSERVED THERE ANNUALLY.

LOCATED 200 FEET BELOW THE MEMORIAL IS THE 14 TON GRANITE CRYPT CONTAINING THE ASHES OF ITS BUILDER AND DONOR, SAMUEL HILL, WHO WAS BEST KNOWN AS THE PIONEER PROMOTER OF GOOD HIGHWAYS, BUT WHO ALSO BUILT THE PEACE ARCH AT BLAINE, WASHINGTON, AND THE MARYHILL MUSEUM OF FINE ARTS.



MARYHILL MUSEUM OF FINE ARTS

SITUATED ABOUT FOUR MILES WEST OF STONEHENGE ON HIGHWAY 830, THIS BUILDING CONTAINS THREE FLOORS WITH EIGHTEEN GALLERIES OF EXHIBITS OF FINE ARTS AND CRAFTS FROM MANY PARTS OF THE WORLD.

THE LATE SAMUEL HILL, ITS FOUNDER AND DONOR, BEGAN CONSTRUCTION IN 1914 AS A HOME FOR HIMSELF AND FAMILY. WORK WAS STOPPED BY AMERICA'S ENTRY INTO THE FIRST WORLD WAR AND WHEN CONSTRUCTION RESUMED MR. HILL CHANGED HIS ORIGINAL PLAN, DECIDING TO COMPLETE THE BUILDING AS A MUSEUM TO HOUSE HIS GROWING COLLECTIONS AND THE RARE TREASURES OF ART CONTRIBUTED BY HIS MANY FRIENDS AT HOME AND ABROAD. IN 1926, QUEEN MARIE OF ROUMANIA DEDICATED THE PARTIALLY FINISHED STRUCTURE AS A MUSEUM, BUT THE BUILDING WAS NOT COMPLETELY FINISHED UNTIL 1940 WHEN IT WAS FIRST OPENED TO THE GENERAL PUBLIC. SINCE THAT TIME WELL OVER A MILLION VISITORS HAVE REGISTERED FROM THE FIFTY STATES AND FROM MANY COUNTRIES THROUGHOUT THE WORLD.

SOME OF THE OUTSTANDING EXHIBITS WERE GIVEN BY THE LATE POPE, PIUS XI; CARDINAL MERCIER; THE KINGS AND QUEENS OF GREECE, SERBIA, BELGIUM AND ROUMANIA, AS WELL AS THE FRENCH GOVERNMENT. OF GREAT INTEREST AND VALUE IS THE LARGE ART COLLECTION PRESENTED BY MRS. A. B. SPRECKLES OF SAN FRANCISCO. A VALUABLE GROUP OF OLD MASTERS AND A COLLECTION OF MODERN FRENCH DRAWINGS—ONE OF THE LARGEST AND FINEST IN THE WEST—CAME TO THE MUSEUM IN 1950 FROM DR. AND MRS. O. K. COSLA, NEW YORK CITY. THE DISPLAYS OF NORTHWEST INDIAN ARTS AND CRAFTS, OF ANTIQUE AND MODERN CHESSMEN, AND THE UNIQUE FRENCH FASHION SHOW (OVER 200 COSTUMED DOLLS, 3 FEET HIGH) ARE SOME OF THE VARIED EXHIBITS TO BE SEEN AT THE MUSEUM. EVERYONE IS ASSURED OF AN EDUCATIONAL AND INTERESTING VISIT.

OPEN EVERY DAY, INCLUDING SUNDAYS AND HOLIDAYS, 9 TO 5:30, APRIL 1 THROUGH NOVEMBER 1.

PAINTINGS • SCULPTURE • CERAMICS • GLASS
SOUVENIRS OF EUROPEAN ROYALTY

This folder distributed through courtesy of the Highway 97 Ferry Co., Maryhill, Wash.

FRONT COVER:

THE STONEHENGE
WAR MEMORIAL
OUTLINED AGAINST
THE SKY, ABOVE
HIGHWAY 97 FERRY.

