



When tragedy strikes . . .

The Difference Between
LIFE and DEATH -- *Your Hospital*

WHAT DOES A NONPROFIT HOSPITAL MEAN?

Nonprofit means self-sustaining—no one profits from the income received from patients—all of the income is used to maintain the service and efficiency of the hospital.

The Central Memorial Hospital will be one in which **all the income** from the patients will be used for operating expenses, efficient nursing, and to maintain the most modern equipment **for the benefit of the patients.** Because **there are no stockholders, none of the income will be used to pay dividends. There will be no federal income taxes.** Added to the regular income will be bequests, money gifts, new memberships, and the aid of Men's and Women's Auxiliaries.

THE HOSPITALS OF AMERICA

Dr. C. J. Rorem of the Rockefeller Foundation of Research states: "Privately owned, profit hospitals represent less than 5 per cent of the bed capacity of the hospitals in this country. Most of the best hospitals were erected by voluntary contributions and are operated by churches, fraternal orders, community and MEMORIAL NONPROFIT ORGANIZATIONS.

"It is an advantage to use to the utmost voluntary contributions for hospitals before resorting to compulsory governmental taxation. This advantage lies in the feeling of personal responsibility on the part of the individual contributor. He appreciates and co-operates in a project in which he has a part."

A LIVING MEMORIAL

**This Memorial Hospital will honor those who served in World Wars I and II.
It will be dedicated to the protection of the life and health of our citizens.**

YOUR GIFT WILL SAVE HUMAN LIVES PERHAPS SOME DAY YOUR OWN.

Citizens of this area die needlessly or their health is impaired, because we have no hospital

Make a Sacrificial Gift for Common Welfare

OFFICIAL STATEMENT

Preserving Life and Health Should Be the First Concern of a Progressive Community

Lives of our citizens have been needlessly lost and the health of many endangered because we have no available hospital. The people are aware of the desperate situation and realize that it can be solved only by those who reside in Central Yakima Valley. A modern, well-equipped hospital in this area will attract physicians and surgeons.

In an effort to solve this vital problem, a large committee of citizens is sponsoring the Central Memorial Hospital money-raising campaign.

HOSPITAL FACILITIES—38 beds and 16 bassinets, major and emergency operating rooms, maternity department, nursery and laboratories, and other modern facilities.

THE SITE—donated by Mrs. Maude Bolin—will be $3\frac{3}{4}$ acres, 430 x 380 feet, near the west boundary line of Toppenish, between Fourth and Fifth Streets, which will be extended to the hospital. There will be connecting streets to main highways. The site will permit future expansion.

THE BUILDING will be of most modern design, one story high—cross shape, length 238 ft., and width of cross 157 ft. It will have every device for safety and comfort of the patients—insulated, fire-safe, air-conditioned and dust-proofed.

FINANCIAL PLAN—A non-profit association—no stock to be sold. It will be financed by money gifts from the citizens—community-owned and controlled.

MEMBERS LIABILITY—Members of this hospital association will

never be liable for any debts or assessments. There will be no annual membership fees.

CONTROL AND MANAGEMENT—This hospital, like any bank or industry, will be managed by a Board of Directors—eighteen laymen elected for terms of three years each. They will serve without compensation and **give business management and advice that it would be impossible to buy.**

LIFE OF HOSPITAL—The Life of this hospital **will be perpetual. Its doors—year after year—will never close.**

FINANCIAL CAMPAIGN—We ask your loyal cooperation in this urgent community enterprise. **Make a sacrificial gift, establish a memorial—be a volunteer worker.** The lives of many of our citizens depend upon the building of this, your hospital.

CENTRAL MEMORIAL HOSPITAL

Build This Modern HOSPITAL TODAY

... You May Need It Tomorrow

CENTRAL MEMORIAL HOSPITAL

(NOT FOR PROFIT)

SPONSORS COMMITTEE

Merritt Allen
Roland Bailey
William R. Baker
Bud Balch
C. L. Barthlow
A. B. Bartlett
Leroy Basto
Armanda Batali
L. A. Baughman
William Beaudry
F. J. Beaulaurier
Rev. Emil Becker
Fred W. Beezley
Albert M. Belair
James Bell
Andrew T. Black
Colin Bleiler
Frank Boiselle
Charles F. Bolin
Joe Bouchey
R. H. Bowles
Joseph D. Boyles
C. E. Brown
G. W. Brownlee
F. H. Buckwalter
Francis B. Callihan
Robert Campbell
Sig Carlson
Joe T. Carroll
Gonsalo Cerna
Tomas Cerna
Eldege Champoux

Ernie Champoux
Oliver Champoux
George E. Chandler
O. C. Chandler
H. B. Chittick
Rev. J. W. Christensen
D. E. Clyde
Lee A. Colby
William Coleman M. D.
W. L. Coleman
A. E. Collins
A. Berkeley Compton
Tom Cook
Spruce M. Cox
B. L. Crabtree
Amos B. Craig
Dr. G. D. Dahlman
Jeff Davis
H. E. Days
P. A. Denstad
Arthur J. Deymonaz
John Dillon
Rev. Robert Drewes
Harry G. Duncan
Wilbur Durham
H. W. Earl
Chester A. Eastwood
R. H. Elder
Darrell Fleming
George Foster
B. W. Funk
D. D. Funk

Ambrose J. Gamache
Amos Gamache
Joe Gasseling
William Gasseling
R. M. Graham
J. J. Griffin
Wilfred C. Hall
Otto Halverson
H. G. Harmon
I. J. Haugan
T. F. Herion
I. W. Herrett
Scotty Highfill
Will Hill, Jr.
K. K. Hopkins
Rev. C. E. Hossler
Jack A. Houston
J. H. Immel
Ronny Immerstein
Ungel Iverson
E. O. Jarman
Rev. B. V. Jones
M. H. Kennedy
George M. King
Nathan A. King
Karl Koboski
B. W. Koenekamp
S. L. Kraff
Jack V. Labbee
Earl F. Lamb
John R. Leak
D. L. Leming

Emil Lenseigne
Bruce Lillie
C. H. Lippert
J. Stanley Livingston
G. R. Loderhose
Arnold Loewe
J. R. MacCallum
Angus McDonald
Jasper N. McDonald
N. F. McDonald
William McGowan
O. P. McKeen
Rev. H. F. Martin
Max J. Massong
George F. Mathis
A. C. Meagher M. D.
Gordon E. Merrill
Lew Meshke
L. E. Mikesell
Don M. Miller
Robert R. Moore
W. S. Moore
C. W. Morefield
Wesley Morford
Charles F. Morrison
G. E. Mosebar
Joseph C. Murphy
W. F. Murtagh
Joe Myers
Harold O. Nelson
Dr. John S. Neufeld
John A. Newquist

Wallace C. Nulph
P. H. Oliver
John E. Overman, M. D.
Joe Patnode
Rev. James N. Pendleton
F. M. Petrie, M. D.
R. K. Pettit
Harold F. Peugh
Earl Plank
Dr. R. J. Ralston
G. F. Ramsay
J. D. Rathbun
J. A. Regimbal
Laurent Regimbal
Rev. Earl E. Reisner
John H. Reiter
T. J. Richards
Frank A. Riches
Rev. Donald Rickerson
Glenn H. Rider
G. A. Rivard
Gilson A. Ross, M. D.
George Rowberry
Glen Rowe
Paul Scalley
Rev. Josef Schmidt
P. F. Schroeder
David Scott
L. S. Shattuck
Rev. J. Frank Shaw
E. J. Shearer, M. D.
F. W. Shearer, M. D.

A. Sherwood
L. W. Shotwell
Asa E. Slayton
V. C. Sliger
Randel Stovall
Henry Stroh
B. R. Sturm
Dave Swanson
Rev. Arthur Sydow
N. R. Sylvester
Joe E. Taylor
A. K. Temperley
Henry Thalheimer
John Thalheimer
Pat A. Thomas
Jack S. Thorington
Hector J. Trudeau
Noel E. Trudeau
Rev. C. T. Vanderpool
William Verran
Don E. Wade
Charles M. Wall
L. F. Weigand
Carl Weisbrod
A. E. Wernitsch
Paul Williams
C. E. Wilmeth
C. A. Wimer
Berl Wittkamper
Fred Yahn

OFFICERS AND DIRECTORS

R. H. Bowles, President

J. R. MacCallum, Vice-President

G. A. Ross, M. D., Secretary

B. W. Koenekamp, Treasurer

Fern Beaulaurier

Austin Collins

E. O. Jarman

S. L. Kraff

Harold O. Nelson

G. A. Ross, M. D.

J. N. Bell

P. A. Denstad

George King

John Leak

Laurent Regimbal

B. R. Sturm

R. H. Bowles

K. K. Hopkins

B. W. Koenekamp

J. R. MacCallum

G. A. Rivard

Mrs. Paul Williams

FINANCIAL CAMPAIGN ORGANIZATION

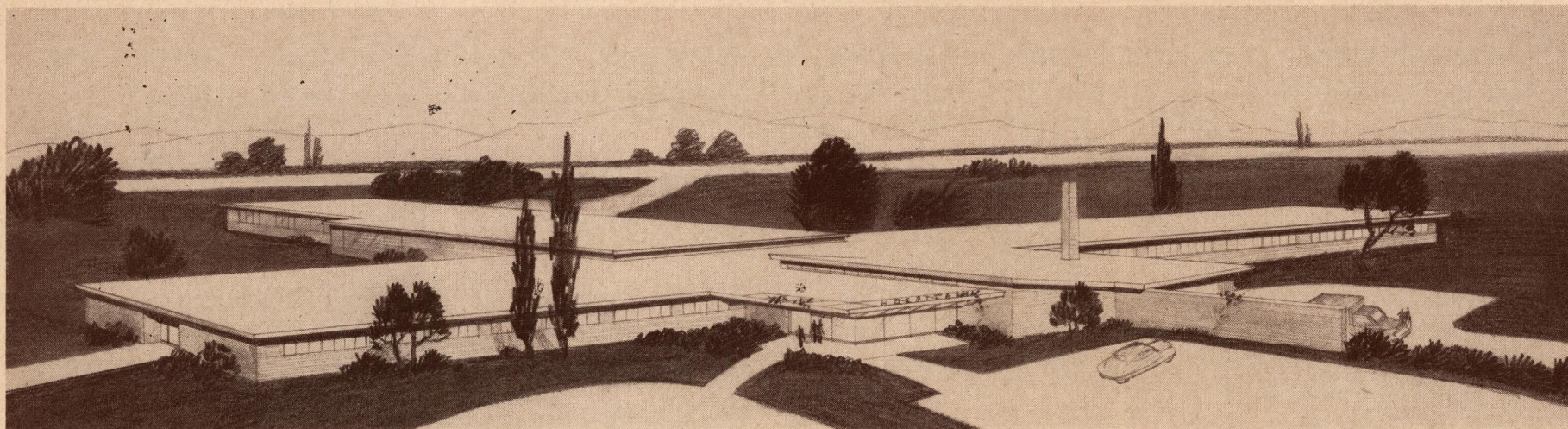
Laurent Regimbal, General Chairman

ADVANCE GIFTS COMMITTEE—Laurent Regimbal, Chairman. **GENERAL CAMPAIGN ORGANIZATION**—J. S. Livingston, Chairman

A **General Committee** of citizens is now enlisting to serve as workers in the money-raising campaign. Members of the Sponsors Committee have agreed to serve on the Advance Gifts or on the General Campaign Organization. They will work shoulder to shoulder with the citizens who are now volunteering to serve as workers.

The names of Volunteer Workers will be published in the newspapers at an early date

THE CAMPAIGN WORKERS ARE SERVING YOU WITHOUT COMPENSATION. THEY ASK YOUR
LOYAL AND ENTHUSIASTIC SUPPORT. THIS IS YOUR PROBLEM AS WELL AS THEIRS!



CENTRAL MEMORIAL HOSPITAL

To Serve the People
of Central Yakima Valley

Your Hospital

. . . A LIVING MEMORIAL

WHOSE PROBLEM IS THIS?

The residents of Central Yakima Valley demand hospital protection. The problem is: Shall we make this a safe place in which to live, or shall we continue to gamble the lives of our loved ones by trusting to luck?

THE PROBLEM IS YOURS

The problem of raising money for the hospital is **yours!** It must be solved **now!** The question will not be "**How little**, but **how much can I give**, in order to assure better protection for my family, myself and my community." **Give until it hurts!** Remember you are **dealing with human lives!**

Solve this problem now: Set aside for a short time any social engagements that will interfere with the Hospital Campaign because it is your most urgent, social, economic and humane problem.

BE A SELF-RELIANT COMMUNITY!

No longer can hospitals in distant cities be expected to serve outside communities. Let's be self-reliant . . . build a modern hospital and medical center to serve Central Yakima Valley!

A QUESTION OF DOLLARS AND CENTS

Providing modern hospital facilities is not only **humane** but is also an important factor in the **economic life** of this valley as well as of all individuals. In recognition of this fact **many industries** consider hospitals most essential for the protection of their employees and families. **Farm organizations** plan for group hospital insurance to help rural areas. **Labor unions, lodges** and many other organizations, and thousands of individuals, are interested in hospital insurance as an economic safeguard. **What is the value of a human life . . . to a family . . . to the community?**

UNITED ACTION

When it comes to saving human lives and protecting the health of our neighbors, there can be no such thing as a city boundary. Spurred by this motive, busy men are working to obtain hospital protection for the residents of the different communities of Central Yakima Valley.

Please Remember . . . This Is Your Problem



ESTIMATED COST

BUILDING

(Including Architect's Fee and State Sales Tax)\$231,000

EQUIPMENT 47,500

GROUND

Drives, walks, curbs, sanitary connections, etc. 10,000

PREOCCUPATION EXPENSE

(Hospital staff, insurance, taxes,
business office, and contingencies) 18,000

ESTIMATED COST\$306,500

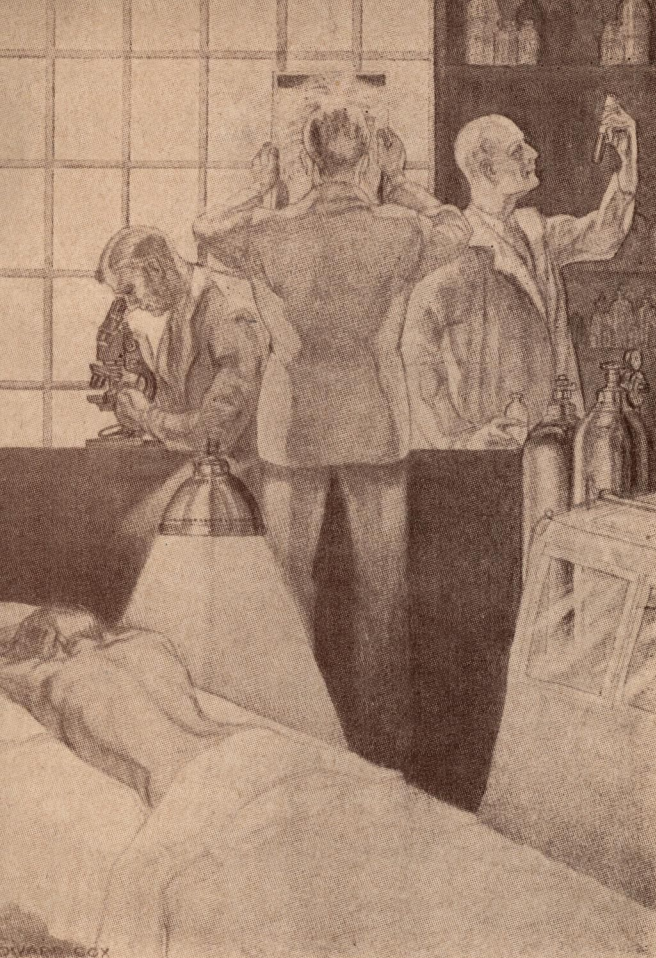
CASH ON HAND (first campaign)..... 24,765

CAMPAIGN OBJECTIVE\$281,735

Note: If, in the opinion of the Board of Directors, sufficient subscriptions are not obtained to justify proceeding with this hospital project, all subscriptions will be cancelled and all money that has been paid on subscription notes will be returned to the subscriber.

EXPENSES of the money-raising campaign have been advanced by citizens in order that all money donated in the campaign will be used in building and equipping the Hospital.

(Note: The Campaign Committee acknowledges the courtesy of Physicians' Record Company, Chicago, Illinois, for the use of illustrations, LOOK Magazine for cover picture, and T. F. Hargis, Jr., of Yakima, for the plans, perspective and estimates for the proposed Hospital. The Board of Directors of Central Memorial Hospital reserves the right to change the plans or design of the building, and to build a minimum sized hospital in the event that sufficient funds are not subscribed to build the maximum, and to do all things necessary in the furtherance of the best interests of all concerned.) Text of Prospectus and plan of financing are property of Barr Method of Planning and financing.



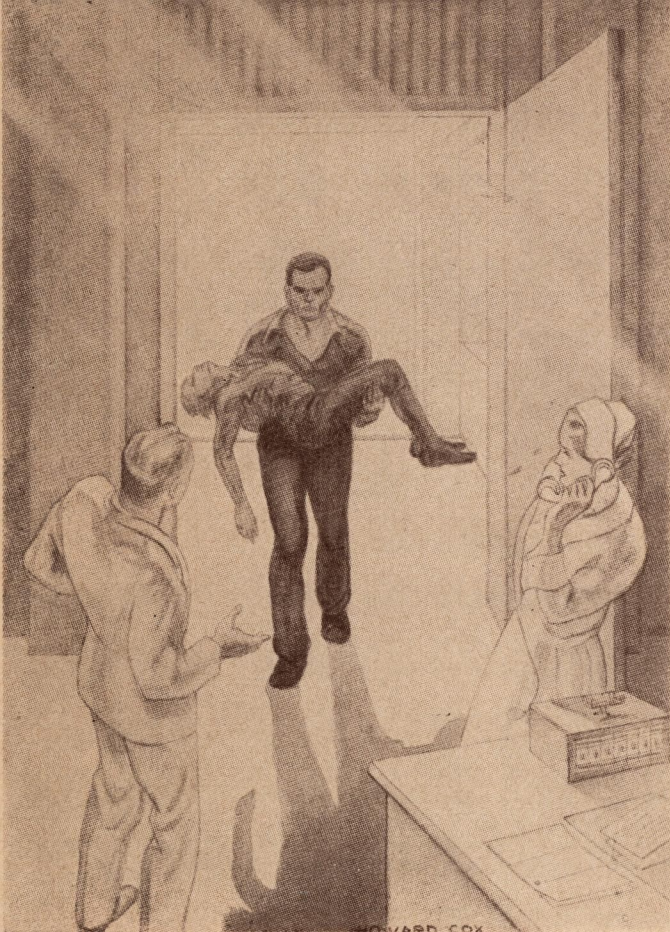
A MODERN NONPROFIT HOSPITAL TO SERVE YOU

Here the patient will find awaiting him the most modern equipment of medical science, surgical technique, and nursing skill contributing to restoration of life and health.

A nonprofit hospital, not paying dividends and Federal incomes taxes, and being the beneficiary of bequests and money gifts, **can afford adequate equipment and improved technical and nursing service.**

The progress and development of a community are often gauged by the humanitarian leadership of its citizens in providing necessary, well-equipped hospital facilities. Safeguarding of life and health should be one of the primary instincts of good citizens. **This is a call to duty—join this great humanitarian cause!**

Make Central Yakima Valley a Safe Place in Which to Live!



OPEN THE DOORWAY TO LIFE AND HEALTH!

There may come a time in your life when a doorway—the doorway of a hospital—represents the difference between life and death. **When that time comes, it makes a tragic difference** whether that doorway is open or closed—whether it leads to restored health and life through adequate medical, surgical, and nursing service **made possible** by the best equipment, laboratories and available beds, or whether through **lack of hospital** facilities in Central Yakima Valley, precious minutes are lost during the delay in reaching a hospital in a distant city.

The door of the new Central Memorial hospital will swing wide, offering hope for the sick and injured who will stand at its entrance.

Now Is the Time to Build . . .

Tomorrow We Live Because Today We Prepare

NAMES THAT WILL LIVE

Under this title in the public lobby of the new hospital will be listed the names of the Founders. These Founders will be all who contributed any sum of money, also the volunteer workers of the financial campaign—all who made the new hospital possible—their names will live.

ESTABLISH A LIVING MEMORIAL!

YOUR NAME OR THAT OF A LOVED ONE—Wife, husband, mother, father, daughter, son, sister, or brother—will be honored and her or his memory perpetuated by this service to the community. Make a sacrificial gift—YOU AND THEY WILL CONTINUE TO LIVE, year after year, active day and night—RELIEVING HUMAN SUFFERING—SAVING HUMAN LIVES.

MEMORIALS . . . NAMES WILL BE ON PLAQUES IN PUBLIC LOBBY

The name of any person, family or organization may be commemorated by donating one or more of the following units:

OPERATING ROOMS:

Major	\$10,000
Emergency	5,000
MATERNITY DEPARTMENT	5,000
NURSERY	4,000

X-RAY DEPARTMENT	\$4,000
LABORATORY	3,000
ROOMS (each)	2,000
BEDS (each)	1,000
BASSINETS (each)	500

One Voting Membership . . . for each \$100 or more subscribed.

An Associate Membership . . . a gift of less than \$100.

There will be no annual membership fees.

Pay in Installments

Subscriptions for Donations and Memorials are payable in installments. The first payment of 10% of the subscription is payable on REQUEST. The balance is payable 10% of subscription EVERY THIRTY DAYS THEREAFTER. Those desiring to do so may pay the entire amount at the time of first notice.

DONATIONS ARE DEDUCTIBLE FROM INCOME TAXES

Government Bonds are acceptable at their market value

Note: If sufficient subscriptions are not obtained to justify proceeding with hospital project, **all subscriptions** will be cancelled and any money paid on subscriptions in this or in prior campaign will be returned.

Money paid during prior hospital campaign will be credited on a subscription for a larger amount in the present campaign.

Give—That Others May Live!

THIS IS AN INVESTMENT

INVEST IN THE BEST HEALTH AND LIFE ASSURANCE POLICY

You carry insurance of all kinds, so why not invest in the most important of All—a **Health and Life Assurance Policy**, to assure better chances for Health and Life for your family and yourself? **You may do this by building a well-equipped hospital.** What value do you place on your health—your life? **Your answer** will be to donate accordingly. Your donation will give you a better **assurance** of life, health and happiness.

REMEMBER—THE PROBLEM IS YOURS

Central Yakima Valley is **united**—all thinking citizens will work and contribute to the best of their ability to fulfill their most desperate need, a hospital.

This is a call for united effort, in order that when the need for a hospital comes to **your home** — the answer need not be: "**We have no hospital!**" Be a **good Samaritan** to your neighbor, to your own family, and perhaps, some day, to yourself . . . **Build Now!**



A CALL TO DUTY

150 busy men—volunteers are working to **fulfill our great need—a hospital.** They are spending their valuable time in planning and organizing this project—working without compensation. They will also subscribe on the same basis as others, and solicit you in the belief that **you are vitally interested** and that you are willing to cooperate to the best of your ability.

There should be no need for these workers to persuade anyone to donate, according to the best of his ability, when the lives and health of the community, including our own families, are at stake.

Make a Sacrificial Gift!

It will be **impossible** for the workers to visit all citizens . . . If you desire to aid, please telephone 5571. A volunteer worker will visit you.

CENTRAL MEMORIAL HOSPITAL
225 So. Toppenish Ave. Tele. 5571
Toppenish, Washington

Some Day You May Use This Hospital
Why Not Help Build It?

NAMES THAT WILL LIVE

Make a Sacrificial Gift

THAT OTHERS MAY LIVE!

A Contributor Does Not Give Money to a Hospital—
—he gives it to another citizen who receives the
benefit of the hospital. Thus the charitable and
generous impulses of mankind are extended to the
sick and the injured of the community.

A Living Memorial

The names of those who make Central Memorial
Hospital possible will continue to live, year after
year, active day and night, relieving human suffer-
ing and saving human lives—
MAKE A SACRIFICIAL GIFT!