

Here's Your
Introduction to....

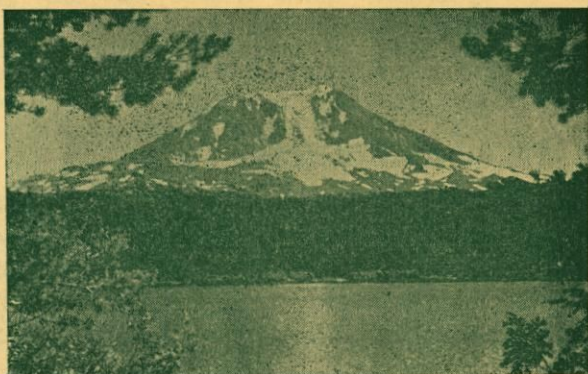
Goldendale

And Klickitat County

Washington

"A very remarkable place where grandeur and beauty and detachment from the world all meet, is Goldendale, on Klickitat Creek in Southern Washington. On a summer's afternoon one may see from this beautiful spot four splendid snowclad mountains—Mt. Hood in Oregon to the South, Mt. St. Helens and Mt. Adams in Washington to the west and the towering Mt. Rainier farther to the north."

—Nicholas Murray Butler



—Mt. Adams

For information not included in this folder

Write to

SECRETARY, CHAMBER OF COMMERCE

Goldendale, Washington

LOCATION . . .

Goldendale is located near the geographical center of Klickitat county, of which it is the county seat. It is 115 miles east of Portland, Oregon, and 70 miles south of Yakima. It is 12 miles from the Maryhill ferry crossing of the Columbia River on Highway 97, the shortest highway link between Washington, Central Oregon and California. Klickitat county itself has a frontage of more than 80 miles on the Columbia river and is strategically located to share in the forthcoming industrial expansion which experts foresee for the Mid-Columbia area.

TRANSPORTATION . . .

Goldendale is served by the S. P. & S. railway, by Greyhound bus on the direct Portland-Yakima-Spokane route, and by Highway 97. The Dalles airport, from which United Airlines operate two flights per day, is located in Southern Klickitat county, less than 30 miles from Goldendale. A city airport, suitable for all private planes, is in the course of construction.

POPULATION . . .

	Goldendale	Klickitat County
1940 census	1584	11,357
1946 special census	1859	12,309

AREA OF THE COUNTY . . .

1,865 square miles or 1,193,600 acres.

ALTITUDE AND CLIMATE . . .

Goldendale's elevation is	1635
Mean annual temperature	49½°
3 summer months average	62°
3 winter months average	37°
Average annual rainfall (4-year average)	18.21

VALUATION AND TAX RATES . . .

Low tax rates are reflected in the following figures: Total assessed valuation—Goldendale, \$733,833; Klickitat county \$11,088,417.

Property Tax Rate: State 2.49 mills; county 10.71 mills; city 15.00 mills; Goldendale school district No. 404, 10 mills; hospital district 3 mills.

FINANCIAL INSTITUTIONS & DEPOSITS . . .

Pioneer State Bank, Goldendale—Total assets, \$3,736,344.62; total deposits, \$3,526,876.57; capital, \$208,111.72.

Security State Bank, White Salmon—Total assets, \$2,571,771.76; total deposits, \$2,485,524.96; capital, \$84,855.24.

INDUSTRIES . . .

Industries in and around Goldendale concern chiefly with lumber, and lumber manufacturing, with payrolls from this source totaling approximately \$400,000 annually.

AGRICULTURE . . .

The agriculture area surrounding Goldendale is devoted chiefly to non-irrigated dry land farming, chief products being wheat and dryland alfalfa, the latter containing extremely high protein content. As a result it is being shipped throughout the Pacific Northwest and used as premium quality poultry, dairy and livestock feed. These feeds available in the vicinity are causing a year-to-year increase of livestock in the area. In the river sections, weather and soil conditions are conducive to the production of high-quality fruit and truck crops.

CHURCHES . . .

Goldendale has seven churches, representing most leading denominations.

SCHOOLS . . .

Goldendale and Klickitat county maintain a high standard of education, with a school enrollment comprising 18 percent of the county population. The Goldendale high school is fully accredited.

FIRE PROTECTION . . .

The high degree of fire protection efficiency for Goldendale is reflected in the low fire insurance rates within the city limits.

HOSPITAL FACILITIES . . .

Goldendale General Hospital is served by competent physicians. A hospital district has been formed for the purpose of constructing a new hospital in the immediate future.

BUILDING AND CONSTRUCTION . . .

New home construction in Goldendale during 1946 amounted to \$200,000. Commercial and industrial construction during 1946 amounted to \$75,000.

HOMES . . .

The city of Goldendale has approximately 800 residence buildings, a majority of which are occupant-owned.

LIBRARY . . .

Goldendale and its surrounding trade area are served by a Carnegie endowed public library.

SPORTS FACILITIES . . .

Goldendale has a nine-hole golf course and a clubhouse conveniently located northwest of the city. Brooks field, in the southeast part of Goldendale, is well-suited for use by baseball teams of the area. A centrally-located playground has two tennis courts and play facilities. A fund of \$30,000 has been donated by the citizens of the community and is now on deposit for the construction of a modern swimming pool and bathhouse.

TOURIST COURTS AND HOTELS . . .

Six tourist courts and modern hotel in or near Goldendale.

NEWSPAPERS . . .

The Goldendale Sentinel.
The White Salmon Enterprise, White Salmon.
The Mt. Adams Sun, Bingen.

LODGES AND FRATERNAL ORGANIZATIONS

All leading lodges and fraternal organizations are represented locally.

UTILITIES . . .

Rural electrification being expanded rapidly due to proximity of Bonneville dam, from which inexpensive power is available.

Telephone service provided by Oregon-Washington Telephone Company.

WATER SUPPLY . . .

City of Goldendale draws its water supply from nearby mountain springs, the water being pure, soft and free from alkali.

HUNTING AND FISHING . . .

No spot in the Pacific northwest affords the sportsman better fishing than that found in the Big Klickitat river. Thousands of Steelhead migrate up this glacial stream every spring, where they remain until late fall. Some idea of the number of Steelhead taken from this stream during 1946 is shown by the fact that one hardware store in Yakima had on display during the season over 1000 of these fighting beauties that averaged 26 inches in length. The river is stocked yearly with Rainbow trout from the State Fish Hatchery near Goldendale. The scenic beauty of the river as it winds its way down the deep Klickitat gorge and the towering mountains add to the popularity of the famous stream. Streams in and around Goldendale also afford excellent trout fishing and hundreds of nimrods make limit catches practically every weekend. Lake fishing is also ideal in several lakes in the Mt. Adams area, which can be reached via the Goldendale-Glenwood highway.

One of the most picturesque drives in the Northwest can be made by taking the Goldendale-Glenwood highway, which leads into the beautiful Glenwood and Trout Lake Valleys and intersects the Evergreen Highway at White Salmon and Bingen. Excellent trout fishing will also be found in many of the crystal-clear streams and rivers along this picturesque drive in the western section of the county.

Deer hunting is also excellent in the Simcoe mountains, Klickitat and Mt. Adams areas during the fall season when thousands of deer migrate down from higher elevations to winter. Black and brown bear are also found in all of these sections. Coyote hunting during the fall and winter months is a popular and profitable sport for many sportsmen.

SCENIC SIDE-TRIPS . . .

Klickitat River Cut-Off: This trip is preferred by many over the Columbia Gorge route, because of the unusual beauty of the thousand-foot gorge of the Little Klickitat River. Along this river-level route are located two of Klickitat county's most impressive industries. First is the plant of the Dry-Ice Corporation, which transforms natural carbon dioxide gas into dry-ice; second is the modern, all-electric mill of the J. Neils Lumber Company at Klickitat. This route follows the Little Klickitat to its junction with the Big Klickitat, then parallels the combined streams on their journey to the Columbia at Lyle.

Panorama Loop: This pleasant 35-mile drive offers a wide variety of scenery, following State Secondary Highway No. 8 eastward from Highway 97 and climbing to the summit of the Columbia River hills. From this point a sweeping panorama unfolds, revealing the tremendous Columbia River Gorge and beyond it, the multi-colored vastness of the John Day country. To the north, across Rock Creek canyon, are seen part of the extensive Ponderosa pine forests for which the area is noted. Behind them stretch fields of the famed Bickleton grain country. From this elevation point of approximately 2,500 feet, the highway descends in sweeping turns through the Goodnoe Hills plateau and down in Rock Creek Canyon to an elevation of about 300 feet. This isolated canyon is the home of the Rock Creek tribe of the Columbia River Indians. Following the winding stream, the road makes a complete turn before starting its climb up the precipitous Rock Creek grade, finally emerging onto the level farming area of Pleasant Valley. From here it is only a short distance back to Goldendale.

Along Evergreen Highway: U. S. 97 has long been the favorite route of the traveler in search of the swiftest, shortest and safest route between Washington and California points. In addition this highway and U. S. 830 provide some of the most inspiring scenes in the Northwest. At a point five miles south of Goldendale is a vantage point from which may be seen, under favorable conditions four of the most famous mountain peaks of the Pacific Northwest—Mt. Adams, Mt. Rainier, Mt. Saint Helens, and Mt. Hood. Two miles beyond this viewpoint the highway meets the three miles of twisting curves known to thousands of motorists as the Maryhill Loops. At the foot of the "loops" stands the magnificent STONEHENGE War Memorial. Modeled after the ancient Druid sacrificial temple on Salisbury plains in England, this monument was erected by the late Samuel Hill in memory of World War I heroes who were sacrificed to the gods of war. Four miles west of Stonehenge Memorial stands the MARYHILL MUSEUM OF FINE ARTS. Built originally by Samuel Hill as a mansion in which he hoped to entertain King Albert of the Belgians and other European royalty, this Flemish castle has been converted into a treasure storehouse of artistic works, ranging from sculptures by Rodin, creator of "The Thinker," to petroglyphs by the primitive forefathers of the American Indian. Three full floors of exhibits are open to the general public during the summer months. A nominal entrance fee is charged. Picnic grounds overlooking the Columbia Gorge are open to the public at no additional charge.