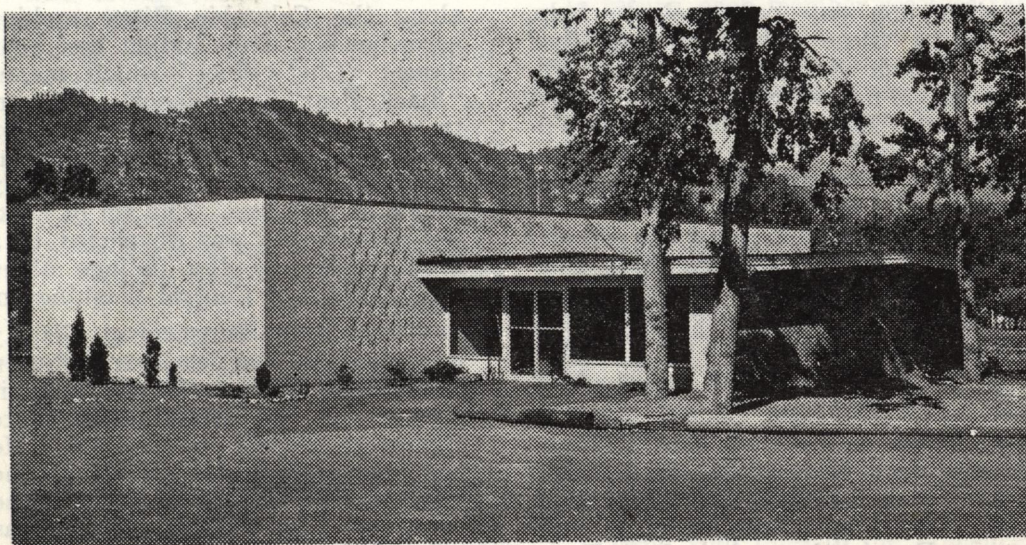


# CHELAN COUNTY HISTORICAL SOCIETY NEWS BULLETIN



VOLUME I — NUMBER 3

SEPTEMBER, 1959

## NEW MUSEUM ATTRACTS MANY VISITORS

Since the Museum opened on June 27, an average of 150 people per day have passed through its doors to view the many interesting exhibits and displays. Visitors from all over the United States and many foreign countries have signed the guest register and voiced their approval of the Society's efforts.

An interesting feature attracting visitors are the "Displays of the Month" which include the world famous collection of miniatures owned by Mrs. Clair Warren of Wenatchee; a collection of sea shells exhibited by Mr. and Mrs. Herman Ohme of Wenatchee; the early papers of the Washington family displayed by State Senator Nat Wash-

ington of Ephrata; and an ancient gun display belonging to Ernest Caviness of Cashmere.

The Society is interested in obtaining outstanding collections to use as future "Displays of the Month," so if you have one that you would be willing to loan, contact the Trustees of the Historical Society.

## WANTED

Do you have any of the following things that you will donate to the Historical Society: gold nuggets, gold coins, early western guns, especially a Colt 44, a real scalp, or early history books of the Northwest?



## FAITHFUL WORKERS

The Willis Carey Historical Museum is being kept open daily by a group of public-spirited ladies who have volunteered their services to assist in this manner. Each lady gives one day per week to help. Among those volunteers captained by Velma Burbank are Ione Williams, Muriel Severson, Margaret Stevens, Edna Ridley, Ruth Williams, Ruth Baker, Eunice Braun, Dorothy Lowers, Gladys Simpson, Nellie Yenter, Marie Magnuson, Meryle Thompson, Louise Orcutt, Stella MacArthur, Edna Hall, Dorretta Bixler, Kathryn Heberlein, Lila Watson, Mabel Murdock, Eda Peterson, Peggy Pettit, Laura Tigner, Bessie Andrews, Erma Karns, Alice Lee and Nellie Peters.

These ladies have kept the museum open from 10:00 a.m. to 4:00 p.m. each day except Sunday when the hours have been 12:00 to 4:00 p.m. Evening hours have been Tuesday and Thursday from 7:00 to 9:00.

## NEW HOURS

On September 20 the opening hours changed. The museum will now be open daily from 1:00 to 5:00 p.m. and Tuesday and Thursday evenings from 7:00 to 9:00 p.m. There is always someone at the museum during its opening hours to answer visitors' questions, to explain the displays, and to help those who wish to purchase items at the souvenir and book counter.

## HISTORICAL BOOKS

Chelan County residents should take advantage of the fine group of historical books pertaining to this area that are available for sale at the book counter at the museum. It is believed to be the best selection of historical books in Central Washington.

## JOHNSON CREATES A MUST SEE EXHIBIT

An outstanding new exhibit which was just installed in the museum is one of a life-size Indian warrior who is sitting on a rock along the Columbia River making arrowheads. This Indian has been named "Chet-Woot" which means "Black Bear" in Chinook. He portrays the highly skilled workmen that made the stone points that tipped the hunting tools of the early people of this area. The art of making arrowheads was developed to a high degree by the Indians along the Columbia in Central Washington.

This three-dimensional display was created by artist Kenn Johnson of Tacoma, staff artist and exhibit planner of the Washington State Historical Society in Tacoma. He has been assisting in setting up the displays here in our museum. The background for this new display was painted from a Kodachrome photograph of the Columbia River near Crescent Bar taken by a member of the Historical Society.

## WERE YOU THERE?

A glance at the guest register shows that many of the people of our county have not taken time to visit our museum. Remember, it is your museum and your donations of time and money that have helped to build it. It will be very worthwhile to see this new cultural addition to Chelan County. Arrangements are now being made with the schools of the county for guided "field trips" for the students through the museum.

Our present "Displays of the Month" include a 5 foot long by 2½ foot high working model of a J. I. Case 65 H.P. steam tractor, built by George Sauer of Peshastin; and a display of hand blown glass from the Leman Johnson collection.

## AUTHOR TO SPEAK AT ANNUAL MEETING

The annual business meeting and election of officers of the Chelan County Historical Society will be held Monday, October 5 at the museum building at 8:00 p.m.

Mr. Ralph Chaplin of Tacoma, author, writer and noted authority on Indians of the pre-white man era will be the featured speaker of the evening. Mr. Chaplin is on the speaking staff of the Washington State Historical Society, and is well-known for his interesting lectures.

Plan to come and support your society and spend an interesting evening. The meeting is open to the public and everyone is invited.

Refreshments will be served following the meeting.

## INDIAN PHOTOGRAPHS

A wonderful collection of Indian photographs, some of them dating back more than a half century, has been given by Grace Christianson Wenzel of Leavenworth. Among these are some photographs of Indians gathering and preparing food. Along with these food pictures she has given us a number of kinds of Indian foods which she gathered for a display. Mrs. Wenzel is from one of the early day pioneer families that lived in Moses Coulee and was well acquainted with Chief Moses and members of his tribe.

Mrs. Wenzel's pictures are being mounted for display and will be shown along with other early day photos given by Ed Ferguson, Walter Thayer and others.

## OUR THANKS

Our thanks to Stevens Lumber and Zee-Brick for the donation of the beautiful planter in the lobby of the museum, and to Kashmir Gardens for keeping it filled with plants.

## DUES DATE, OCT. 1

October 1 is the date that our dues again come due, and you are urged to send in your dues as soon as possible. The dues are \$2.00 annually, or life membership is \$100. In return, each member receives this news bulletin of the Society's activities and a 15% discount on all books, jewelry, souvenirs, and postcards sold at the museum, plus the satisfaction of knowing that he is helping to preserve and mark the historical sites of Chelan County.

It is not too late to take advantage of the special memorial plaques honoring a pioneer or a pioneer couple. A contribution of \$100.00 allows one name (or a couple, as "Mr. and Mrs.") to be placed on a dated plaque signifying the year they came to Central Washington. These plaques are on display in the lobby of the museum.

Send your dues to the Treasurer, Robert Eddy, at Cashmere.

## NEW CASES PLANNED

Your trustees are continually trying to improve the museum and grounds. This fall we hope to complete the construction and installation of the new low-type floor display cases for the center of the main room. This will give us much needed display room for manuscripts and other small items that cannot be shown to the best advantage in a wall case.

## NEED PHOTOS

Do you have any good photographs of early day Indians that lived in Central Washington?

We still lack photos of several including John Harmelt.

The pictures can either be a gift or a loan.



## OUTSTANDING!!

1. The Chelan County Historical Society's new building and surroundings with most interesting displays inside.
2. Home bank services as afforded the many satisfied customers of Cashmere Valley Bank — In the Heart and Center of our productive valley — Independent for your "Service with Safety." We are boosters and supporters of this new landmark — with the preservation of home valuables.

### CASHMERE VALLEY BANK

Member of Federal Reserve System

Member of F.D.I.C.

## COMPLIMENTS

OF

## GREIME & FASKEN THEATERS

**Chelan County Historical Society**  
**CASHMERE, WASHINGTON**



Mr. Click Relander

1212 North 32nd Avenue

Yakima, Washington