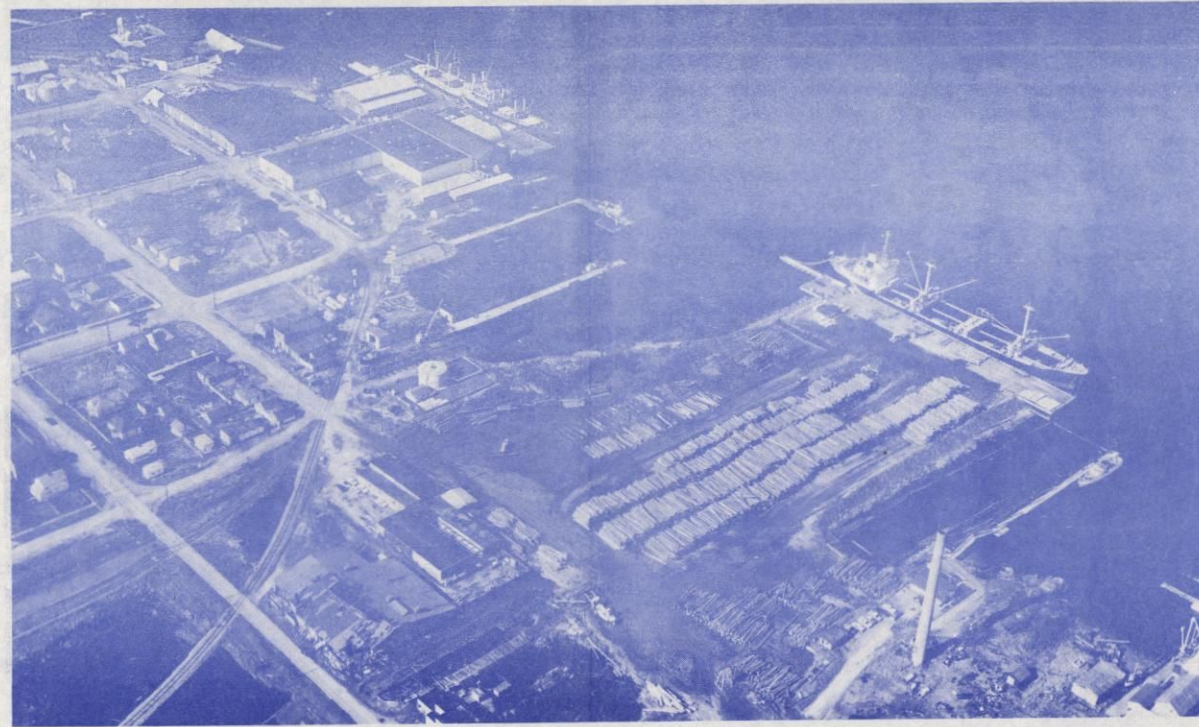


#### HERE'S WHERE THE SUN SHINES

Northwest Washington's peculiar precipitation patterns, caused by storm-blocking effects of the Olympic Mountains, are depicted in this map. It should help settle the argument on who has the "sunshine and banana" belts. The moisture-laden storms, traveling northeast, hit the Olympics where the colder air wrings the clouds of their moisture. The winds are dry when they reach Sequim. Later on they sweep up — and drop — more precipitation. This map is based on information made public by the water-resources division of the United States Geological Survey and the Washington Conservation Department.

## "THE MOST SCENIC ROUTE TO ALASKA"

The Inside Island Marine Passage to Alaska, offers the traveler a once in a lifetime thrill, completely different from anything before experienced in travel. This Ferry Awhile, Drive Awhile route to Alaska is not only the most scenic, but when mileage and cost are to be considered it has many aspects to attract the tourist or shipper. Embarking at Anacortes, on Fidalgo Island, Washington, The Washington State Ferries take you thru the jewel like San Juan Islands to Sidney (Victoria), British Columbia. Then motoring to the northern part of Vancouver Island at Kelsey Bay, you board the B. C. Ferries to Prince Rupert, B. C. Connecting Alaska State Ferries cruise up the Alaskan Island Pan Handle to the vast Yukon and Alaskan areas.



## PORT OF ANACORTES

As far as organized ports are concerned, the Port of Anacortes is Young. It was organized in 1926 with its first big function being to acquire a small boat haven. In 1930 a deep water pier site was acquired and the erection of a wharf and transit warehouse were undertaken the same year. In 1959 the port built the International Ferry Terminal and leased it to the Washington State Toll Bridge Authority.

While the commercial ship facilities were being enlarged in an ambitious program through the years, the small boat category was by no means overlooked. It presently handles 350 commercial and pleasure craft and with new construction now underway, the facility will be able to handle a total of 550 craft by early 1967.

The growing port enterprise now consists of two major ocean pier (540 feet and 580 feet) complexes, a ferry pier and several large warehouses plus the large small boat facility. Strategically located in a natural beautiful setting, Anacortes is the hub of a large industrial, recreational and tourist area. The city and its thriving port have a great future.

The City of Anacortes is developing an industrial park in the eastern part of the city fronting on Fidalgo Bay. The project, which is being conducted with Federal assistance through the Urban Renewal Administration and the Corps of Engineers will make available about one hundred acres of industrial land with adjacent water shipment facilities for ocean going vessels and barges. The industrial park will be attractively sight-screened and will contain sites suitable for various sizes and types of industries. The area is served by rail and highway in addition to water shipping.

## SAN JUANS FROM MT. ERIE VIEW PT.

A picturesque vacationland is formed by the San Juan archipelago, a group of 172 islands in northern Puget Sound. Mild in winter, pleasant in summer, the islands have a wealth of modern resorts, camping areas and fine harbors, beautiful parks and hidden inlets for picnics and exploring. Pleasure boaters never seem to pass the same island twice, and sportsmen can enjoy both fresh and salt water fishing. Salmon derbies and races and rendezvous are fun for skippers and crews. Here is history, too. Nineteenth-century block-houses stand as reminders of the boundary dispute between England and the United States. Views of mountains, green islands and sparkling waterways combine to make auto-ferry cruising the San Juans from Anacortes a memorable experience.



Relax in the peaceful tranquility of the Northwest "banana belt", away from traffic, smog and noise.

## "OUR TOWN"

Anacortes, a short one and one-half hour scenic drive north of Seattle via Highway 99, is completely prepared for the traveler — motels, hotel, camp ground and trailer parks along with excellent restaurants, shops and stores.

Anacortes became an incorporated city shortly after the election of November 4, 1890 and has grown slowly but steadily ever since. The total population now exceeds 8,400 persons.



LOOKING EAST OVER SKAGIT FLATS

The main industries supporting Anacortes are oil refineries, chemical, wood pulp, plywood and hardboard plants, tourists, fishing and food processing.

Other Anacortes features of general interest: A Carnegie Library; seventeen Civic and Fraternal organizations; seven City Parks totaling 1,000 acres of beauty; 50 bed hospital.

Two bridges connect Fidalgo Island to the adjacent areas: Deception Pass Bridge to Whidbey Island on the south and Swinomish Channel Bridge to the east.

**CLIMATE:** "Banana belt" of the Washington State Coast. Gentle southwest winds prevail. Delightful summers, cool evenings and mild winters, snow fall is infrequent and negligible. Annual mean temperature is 50.4 degrees; average daily temperature range is 9.0 degrees; average year 'round minimum is 41.0 degrees; average annual rainfall is 25.02 inches.

**TRANSPORTATION:** Freight rail service by the Great Northern Railway; Bus service, south to Seattle, east to Mount Vernon and connecting lines; Marine air charter service to San Juan Islands; Truck freight service; Port freight service to all other Puget Sound and Canadian ports; Port connections with major shipping lines of the world; Island Ferry Company service to Guemes Island; Washington State Ferry service to the San Juan Islands and British Columbia.

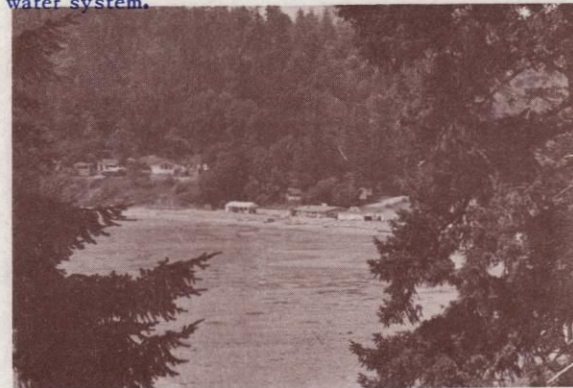
## SCHOOLS

The Anacortes School District, including four grade schools, one junior high, and one senior high, has consistently been noted for its high quality educational program. The low pupil-teacher ration per classroom makes it possible for creative teaching directed toward the individual needs of students. Extra-curricular activities include athletic events, band and choir concerts, and school plays, all of which have gained high honors in statewide competitive enterprise.



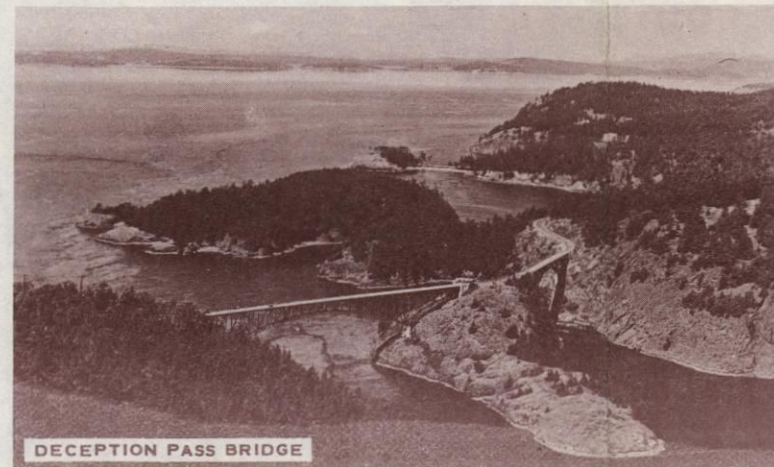
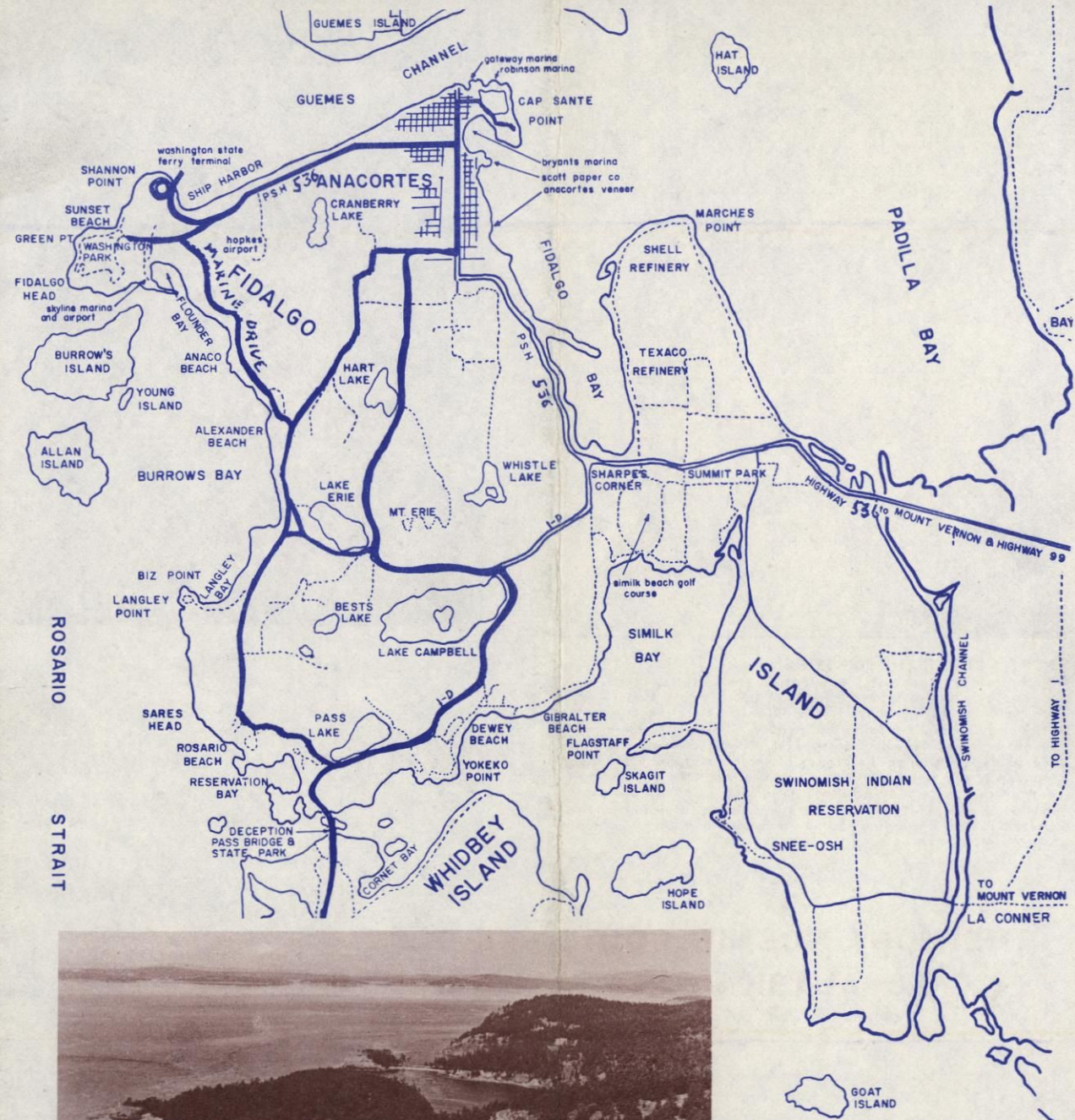
## UTILITIES:

Puget Sound Power and Light Company; Cascade Natural Gas Corporation; West Coast Telephone Company and filtered, purified water through the Municipal water system.



## ROCKHOUDS

Rockhounds find many interesting beaches in this area. Fidalgo Island, on which Anacortes is located and nearby Whidbey Island (reached by spectacular Deception Pass Bridge) have beaches containing vesuvianite, serpentine, a stone locally known as "Whidbey Island jade", some jasper, and a few agates. Beaches on some of the San Juan Islands have also provided limited polishing material. Sucia Island is noted for its fossils. Two rock clubs meet in the area. Local rock shops will provide information on collecting areas.



DECEPTION PASS BRIDGE

FIDALGO ISLAND

