

# CALENDAR



*Ben April*

**DECEMBER 1968**





## HISTORY

Story of California divided into four periods—

Exploration (1542-1780),  
Missions (1769-1834),  
Ranchos (1834-1848),  
American (1848-1900).

Westward the Pioneer,  
1803-1870.

Vroman Gallery:  
Photographs of the  
Southwest.

Time and Space—  
early scientific  
instruments.

Medals, Orders and  
Decorations.

History of  
Transportation—  
prehistoric times  
to the present.

Hall of Industrial  
Technology

History of  
Computation

Hall of Colonial History

Hall of Arms and Armor



## SCIENCE

Hall of Pre-Columbian  
Archeology

Hall of South Pacific  
Ethnology

Hall of Indians of Western  
North America

Hall of Plains Indians

Mineralogy:  
crystallography, ores, gems,  
fluorescents.

Hancock Hall of Rancho  
La Brea fossils

Hall of Evolving Life—  
story of changing life

Hall of Birds and Small  
Mammals

Hall of Insects

Hall of North American  
Mammals—Habitat groups

Hall of African Mammals  
—Habitat groups

Hall of Exotic Mammals  
—Habitat groups

Hall of Geology, featuring  
Southern California  
Shells and other  
invertebrates—living  
and fossil

Ice Age Animal  
Reconstruction at  
Rancho La Brea

## CURRENT TEMPORARY EXHIBITS

### HOPI MYTHOLOGY IN TAPESTRIES

Created by the Hopi artist Chizomona, these tapestries and wall decorations are an unusual utilization of modern embroidery techniques combined with figures from ancient Hopi legends. Second Floor.

### SCRIMSHAW: WHALEMEN'S ART

An exhibit of 56 examples of the whalers' art selected from the private collection of Dr. David K. Caldwell, Curator of Marineland of Florida.

### ICE AGE ANIMAL RECONSTRUCTION AT RANCHO LA BREA

The lake group of life size reconstructions of Ice Age mammals includes a female Imperial Mammoth struggling in the asphalt trap, an adult male and a juvenile mammoth on the shore, and two sabre tooth cats lurking on the edge of the lake hungrily eyeing the juvenile and the trapped female. Made possible through the generosity of Mr. and Mrs. William T. Sesnon, Jr.

### BUTTERFLY TRAVELOGUE

Scenes of American landscape and history as viewed through the eyes of Artist-Lepidopterist, William Howe. A collection of fine watercolor paintings of characteristic assemblages of butterflies and moths from well-known geographical and historical sites in North America. Changing alcove in Insect Hall; Mezzanine.

### WATERFOWL OF NORTH AMERICA

A comprehensive exhibit of approximately 100 beautifully mounted specimens of ducks, geese and swans shows nearly all of the species found in North America plus some rare visitors. Second Floor.

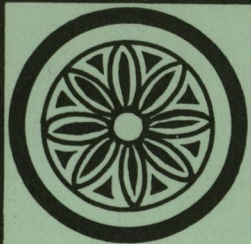
### PREVIEWS IN EARTH SCIENCES

Rare new acquisitions in minerals, a portion of the fine ammonite collection of Ed. N. Harrison and life-like mounts of fossil vertebrates are now on exhibit in two major galleries. Previews of permanent displays for the Hildegarde Howard Cenozoic Hall include mammoths, giant tortoises, evolution of rhinoceroses, and horses in North America. Main Floor.

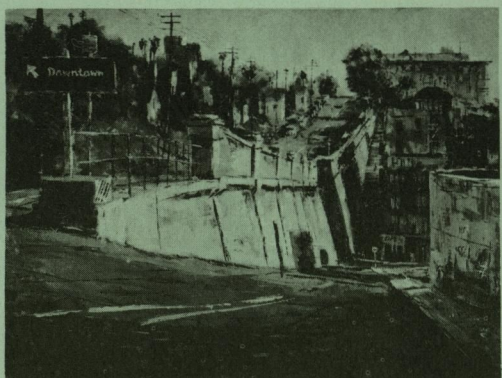


# LOS ANGELES COUNTY MUSEUM OF NATURAL HISTORY

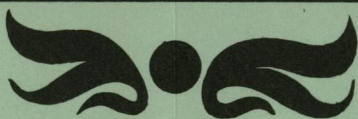
• 900 EXPOSITION BOULEVARD • LOS ANGELES • CALIFORNIA • 90007 •



*Ben Abril's*



## OPENING



DEC. 24

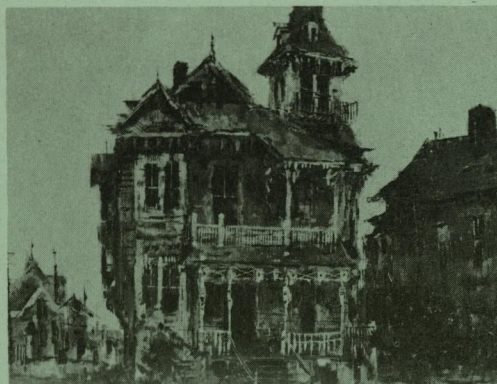
## BUNKER HILL

THROUGH  
MARCH 30, 1969



Ben Abril, an artist that captures the California scene, is a native Californian who has attended art schools in the Los Angeles area. His series of paintings on Bunker Hill, Los Angeles, preserve a record of a scene now forever gone.

Changing Exhibitions Gallery, Ground Floor.



OPENING  
DEC. 10

E. HADLEY  
STUART JR.

MINERAL



COLLECTION

A dazzling collection of minerals, this exhibit includes finely crystallized azurite, wulfenite, and tourmaline; as well as superb specimens of many rare minerals including legrandite, autunite, leadhillite, and lironite. In Previews of Earth Science Hall, Main Floor



NEW EXHIBIT

## 450

MILLION YEAR OLD FOSSIL:  
AN EVOLUTIONARY QUESTION MARK

A temporary exhibit of newly acquired 450 million year old specimens of *Receptaculites* is now on display. The position of this puzzling fossil and its close relatives on the "tree of life" is controversial. A leading authority conservatively says: "Kingdom, Phylum, Class, and Order, UNCERTAIN"!

Hancock Hall, Mezzanine

## ADULT GUIDED TOURS

EVERY FRI. AT 1:30 p.m.

Members of the Docent Roundtable will guide adult groups through the Museum, starting at the Information Desk at the entrance of the Museum.

Also, upon request, Adult Guided Tours, for groups (beginning at 1:30 p.m.) may be arranged for Tuesdays, Wednesdays, and Thursdays. Phone the Museum Alliance Office at 749-3631.

## PARENTS OF VACATIONING

## CHILDREN

are reminded of the many exciting exhibits at the Museum which may beguile holiday-disconnected children . . . the Tyrannosaurus rex jawbone . . . the Hall of Arms and Armor . . . the special exhibits of minerals . . . and of insects . . . California history . . . early automobiles . . . the Elephant Habitat Group . . . and much more. Consider a trip to the Museum with your eager-minded young charges for a morning or afternoon of blissful absorption in the wonders of our world and its history.

DECEMBER 1  
Les Harpes Harmoniques

Catherine Gotthoffer and Dorothy Victor, Harpists

"El Cid" Aragonese . . . . . Massenet  
Reverie . . . . . Debussy  
The Dream of Olwen . . . . . Charles Williams  
Suite pour Les Harpes Harmoniques . . . . . Jeff Alexander  
Little Girl—Big Dream  
Ladies in Waiting  
Bright New Day  
The Lord's Prayer . . . . . Malotte  
Fantasia on Greensleeves . . . . . Vaughan Williams  
Ma Mere l'Oye . . . . . Ravel  
Lullaby from Gayne Ballet . . . . . Khachaturian  
Pavane . . . . . Faure  
Danzas Espanolas . . . . . Granados

DECEMBER 8  
Mitzelfelt Chorale and Orchestra

H. Vincent Mitzelfelt, Conductor

Keith Wyatt, Tenor . . . . . Paul Hinshaw, Baritone  
Beth Schliff, Harpsichord

Jesus, Thou My Wearied Spirit (Cantata 78) . . . . . J. S. Bach  
Jubilate, Amen . . . . . Mitzelfelt-Bruch  
Exultate Deo . . . . . A. Scarlatti  
O Be Joyful . . . . . Mitzelfelt-Haydn  
Domine (Duet from Mass in C) . . . . . Mozart  
Zion Hears Her Watchmen's Voices (From Cantata 140) . . . . . J. S. Bach  
Sanctus No. 4 in G . . . . . J. S. Bach

## SUNDAY CONCERT

Chamber music in the  
Museum of Natural History auditorium  
each Sunday afternoon from  
2:30 to 3:30.

Broadcast over KFAC AM and FM.  
Admission is free. Programs  
subject to change without notice.

DECEMBER 15

Bel Arte Trio

Grisha Goluboff, Violin . . . . . Mona Lands, Piano  
Florence Lahmeyer, Cello  
Trio, Op. 32 . . . . . Anton Arensky  
Trio in E. Flat Major Op. 1, No. 1 . . . . . Beethoven

DECEMBER 22

The Valley String Quartet

William Hector, Violin . . . . . Camille Ericson, Violin  
Mildred O'Donnell, Viola . . . . . Dorothy Muggeridge, Cello  
with guest artist Michele Zukovsky, Clarinet

Five Movements for String Quartet, Op. 5 . . . . . Anton Webern  
Quintet for Clarinet and String Quartet, Op. 30 . . . . . Paul Hindemith  
Quartet, Opt. 59, No. 1 . . . . . Ludwig van Beethoven

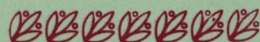
DECEMBER 29

Robinson Ensemble

Beverly Robinson, Soprano . . . . . Carol Baum, Harp  
Roy d'Antonio, Clarinet . . . . . James Low, Piano  
Cinq Melodies Populaires Creque . . . . . Ravel  
Sechs Deutsche Lieder . . . . . Spohr  
F. Minor Sonata, Op. 120, No. 1 . . . . . Brahms  
Three Byron Songs, Op. 95 . . . . . Schulman



HOPI MYTHOLOGY IN TAPESTRIES	Second Floor
SCRIMSHAW: WHALEMEN'S ART	Main Floor
BUTTERFLY TRAVELOGUE	Mezzanine
WATERFOWL OF NORTH AMERICA	Second Floor
HOMENAJE A MEXICO	Main Floor — West Wing
PREVIEWS IN EARTH SCIENCES AND THE	
HILDEGARDE HOWARD CENOZOIC HALL	Main Floor
DAVID P. WILBER COLLECTION—MINERALS	Main Floor
OUTSTANDING MINERALS AND GEMS	Mineral Hall — Mezzanine
PALOS VERDES MARINE FOSSIL VERTEBRATES	Hancock Hall — Mezzanine
ANCIENT POTTERY OF CASAS GRANDES	Main Floor
HALL OF AFRICAN ETHNOLOGY	Second Floor
TYRANNOSAURUS REX — fossil jawbone	Main Floor
PHOTO '68	Main Floor — West Wing
CHRISTMAS YESTERDAY	East Stairway Landing Case, Ground Floor
BARTLETT'S WEST: DRAWING THE	Main Floor — West Wing
MEXICAN BOUNDARY	Closing December 15



#### MEETINGS OF SOCIETIES

- \***Pacific Shell Club**, Sunday, December 1, 2:00 p.m., Lounge (Dr. James H. McLean, sponsor).
- \***Conchological Club of Southern California**, Monday, December 2, 7:30 p.m., Lounge (Dr. James H. McLean, sponsor).
- \***Mineral Research Society**, Tuesday, December 3, 7:30 p.m., Lounge (Barbara Lowe, sponsor).
- \***Southern California Paleontological Society**, Thursday, December 5, 8:00 p.m., Lounge (Mike Hammer, sponsor).
- \***Orchid Society**, Monday, December 9, 7:30 p.m., Lounge (Dr. Templeton, sponsor).

The Museum  
Alliance and  
the Los Angeles  
County Museum  
of Natural  
History warmly  
welcome your  
support and  
participation

I wish to apply for membership in the Museum Alliance:

Name \_\_\_\_\_

Address \_\_\_\_\_

City \_\_\_\_\_ Zip Code \_\_\_\_\_

Make checks payable to MUSEUM ALLIANCE  
900 Exposition Boulevard, Los Angeles, Calif. 90007

in its activities  
through  
membership.

Memberships  
start

at \$12.50. Please  
call 749-3631 for  
further information.

### WON'T YOU JOIN THE MUSEUM ALLIANCE?

#### FOR ALLIANCE MEMBERS

Looking ahead . . .

**New Dimensions To Delight** — Event No. 2

Saturday — January 18, 1969

**Open House At The Museum.**

Announcement to be mailed later.

#### TRAVEL

Group tour — March 8 to March 30, 1969, 23 days, fully escorted

**Mexico-Yucatan-Guatemala-Honduras.**

For members only.

#### A CHRISTMAS MEMBERSHIP APPLICATION

**Christmas Is Coming** and one of the most delightful gifts you can bestow on a friend is a membership in the Museum Alliance . . . especially if your friend has children. A basic membership costs \$12.50 a year . . . and reminds them of YOU all year. Its yearly renewal is the quickest form of shopping known.



**LOS ANGELES  
COUNTY  
MUSEUM  
OF  
NATURAL  
HISTORY**

900 Exposition  
Boulevard,  
Los Angeles,  
Calif. 90007

Address  
return requested