

Union Pacific Railroad



MAP
OF THE
UNITED STATES



**FOR DEPENDABLE
TRANSPORTATION**

*Be Specific
say "UNION PACIFIC"*



The Historic Beginning of the Union Pacific Railroad

The Civil War was raging in 1863... the security of the Pacific Coast was in doubt... unless quick communication by rail could be established overland across the continent.

Thus out of the need of a nation fighting against disruption, the "Pacific Railroad" came into existence. There was no time for lengthy preliminaries. It was a case of selecting the shortest route to the Pacific Coast and laying track with all possible speed.

The shortest and most obvious route was the Overland Trail westward from Council Bluffs and Omaha, originally followed by great herds of buffalo and other wild animals through their instinct for water level routes and easy grades. Later it was used by Indians, then by trappers, emigrants and fortune hunters of '49, the Stage Coach and Pony Express. It was one of the world's finest natural highways; when chosen by the railroad builders it became known as the Overland Route.

President Lincoln actively supported the undertaking, backed by men of prominence and vision. Meeting many delays, often held up by lack of materials... harassed by bands of Indians... with death and disaster ever menacing them... the courageous construction crews carried on.

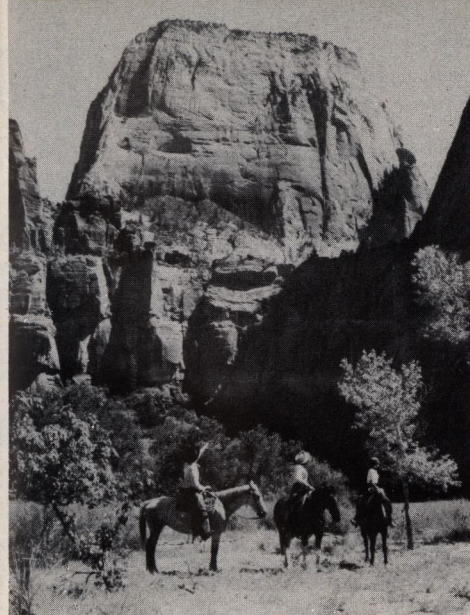
General Grenville M. Dodge, chief engineer in charge of construction of Union Pacific, said afterwards: "The work was military in character and one is not surprised to find among the superintendents and others in charge, many military titles. Surveying parties were always accompanied by a detachment of soldiers."

Finally, in spite of all difficulties, the last rail was laid and on May 10, 1869, at Promontory Point, Utah, Thomas C. Durant of New York and Leland Stanford of California drove the Golden Spike which completed the Overland Route... then and now, the main highway across the continent.

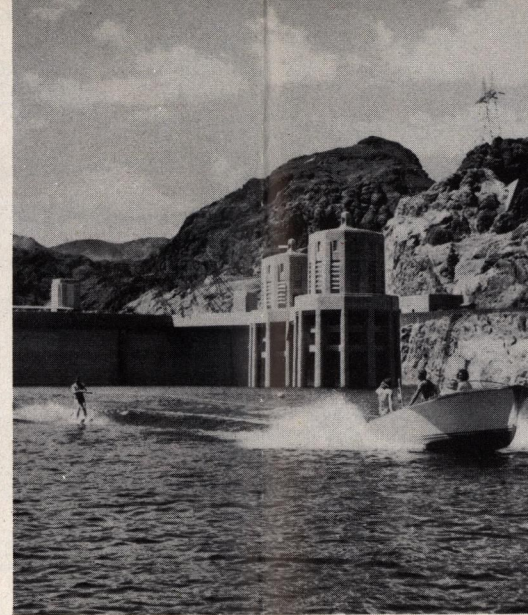
This Strategic Middle Route, which unites the East with the Pacific Coast, carried a tremendous amount of traffic during World War II as troops and freight cargo were speeded to ports of embarkation. Today Union Pacific continues to provide efficient transportation for the shippers and travelers of our country.



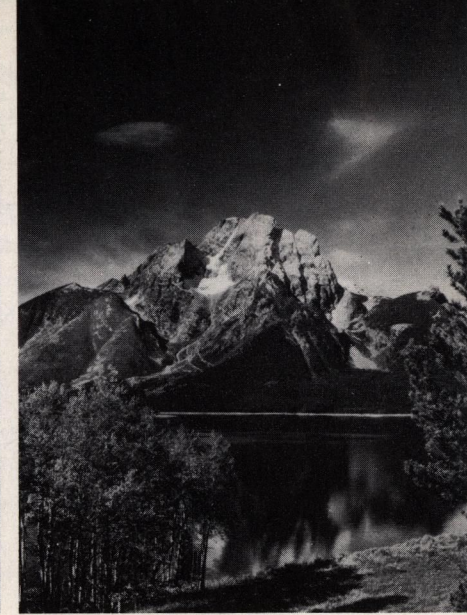
In Bryce Canyon National Park is an immense amphitheatre, 2 miles wide, 3 miles long and 1,000 feet deep, a miracle of erosion and a symphony of color.



The Great White Throne in Zion National Park. Reached by regular motorbuses from Cedar City, Utah.



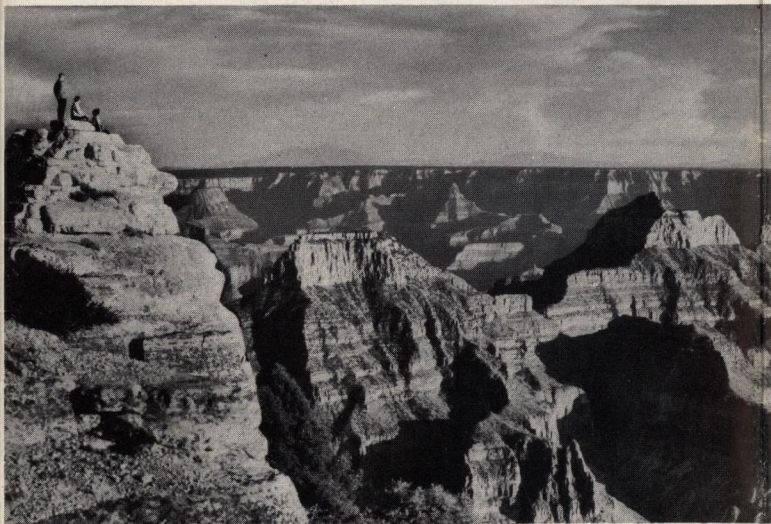
All forms of watersports are popular on Lake Mead, formed by Hoover Dam, near Las Vegas, Nevada.



Mt. Moran in Grand Teton National Park, exemplifies the beauty of the Teton Range.



Santa Barbara Mission in California is a classic example of mission architecture.



Awe-inspiring Grand Canyon, from the North Rim.

Colorado offers many charming vistas which present the rugged Rocky Mountains at their best.



THE GREATEST SCENIC ROUTE TO THE WEST

Nearly all of America's western playgrounds, including sixteen National Parks, are served by Union Pacific, which reaches most of the scenic West.

In the vast territory served by this railroad are the majestic snow-capped Rockies of Colorado . . . romantic Southern California . . . the spectacular geysers and interesting wild-life of Yellowstone, and the loveliness of the Pacific Northwest, approached via Union Pacific by a thrilling 200 mile ride along Columbia River Gorge.

Deserving of special mention are Zion, Grand Canyon and Bryce Canyon National Parks in southern Utah and northern Arizona. Nothing on earth compares with them. These three National Parks, as well as enchanting Kaibab National Forest and colorful Cedar Breaks National Monu-

ment, are accessible over an excellent highway from Cedar City, Utah, the gateway, on the Union Pacific Railroad.

Sun Valley, Idaho, America's foremost sports center, is situated about seventy miles north of Shoshone, Idaho. Skiing is the major attraction in winter, but visitors also enjoy all forms of winter sports such as skating, sleighing, and swimming in outdoor, glass-enclosed, warm-water pools. In summer, vacationists enjoy ice skating on an artificial outdoor rink, golf, fishing, tennis, horseback riding, swimming, skeet and trap shooting, big game and game bird shooting. In the evening there is indoor recreation, music and dancing.

Luxurious Sun Valley Lodge and quaint Challenger Inn offer a wide variety of accommodations within a price range to suit every purse.

The lofty slopes of the Sawtooth Mountains protect Sun Valley against winter winds.

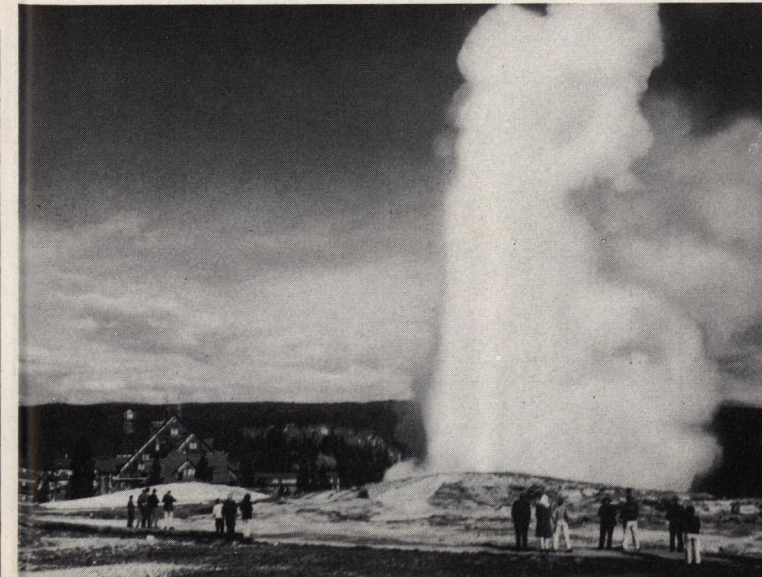


Summer at Sun Valley, Idaho, offers a wide variety of outdoor activities.



Looking across Tipsoo Lake to Mt. Rainier in the evergreen Pacific Northwest.

Old Faithful Geyser, one of Yellowstone National Park's outstanding attractions.





Powerful new diesel-electric passenger locomotives assure smooth, on-time operation.



Union Pacific's "Big Boy," world's largest, most powerful locomotive. There are many of these giants in active service.



Comfortable reclining coach of the type carried on many Union Pacific trains.



A coach-lounge on some trains offers many features of service formerly provided for Pullman passengers only.



A modern cafe-lounge car for coach passengers.



Scientifically designed form-fitting coach seats, with adjustable leg rests, are a welcome and popular new feature.

UNION PACIFIC'S MODERN TRAIN SERVICE

As one of the nation's leading railroads, Union Pacific has a never-ending program of modernization which includes Diesel locomotives, new passenger cars, constant improvements in trackage, properties, facilities and all-around transportation service.

Motive Power, Roadbed, etc.

Many transcontinental passenger trains, operating between Chicago—or St. Louis—and the West Coast, are hauled by powerful Diesel locomotives.

Over a large part of the Union Pacific system, particularly along the main line, there is double-track operation; an invaluable aid in maintaining fast schedules and an important safety factor.

As another safety measure, every mile of Union Pacific's right-of-way is fully protected either by automatic block signals or a modern Centralized Traffic Control system.

On the roadbed, a specially selected crushed rock is used for ballast. The result is exceptionally smooth riding...an assurance of restful night and day travel.

Coach Comfort

Union Pacific trains are equipped with modern, comfortable coaches. Soft upholstery over sponge-rubber assures deep-cushioned comfort. Seats are adjustable to "sleep-easy" positions. During 1950, fifty new Coaches were placed in service on the "City" Streamliners. These Coaches are equipped with scientifically designed seats having padded leg rests which fold under the seat when not in use. (See photo on page to left.)

All Coaches have overhead lights dimmed to a soft blue during night-time hours. Uniformed porters keep the cars neat and tidy at all times and assist with luggage. Well-appointed dressing rooms with large mirrors is another feature which makes coach travel on Union Pacific a genuine pleasure, and a luxury service at low cost.

Varied Sleeping Accommodations

All Union Pacific transcontinental trains provide varied sleeping car accommodations including berths, private rooms and "roomettes." The

room accommodations have private toilet and washbowl facilities, clothes and shoe lockers, night reading light, temperature control, and other conveniences.

Even the open section (upper and lower berths) sleeping cars have a degree of privacy achieved by means of permanent headboards extending from the side wall to the aisle.

Superb Dinners

Union Pacific dining car interiors are restful and inviting. An alert, obliging steward supervises a staff of courteous, well trained waiters to provide the ultimate in fine dining-car service.

The railroad has long been famous for the excellence of its meals. Only the finest foods obtainable are served. Meats, poultry, fresh vegetables and fruits are carefully selected from the rich producing areas of the "Union Pacific West."

It's interesting to know, too, that all of the delicious soups, pastries, rolls, muffins and pancakes are produced from special recipes right in the dining-car kitchen under the watchful eyes of an experienced and particular chef.

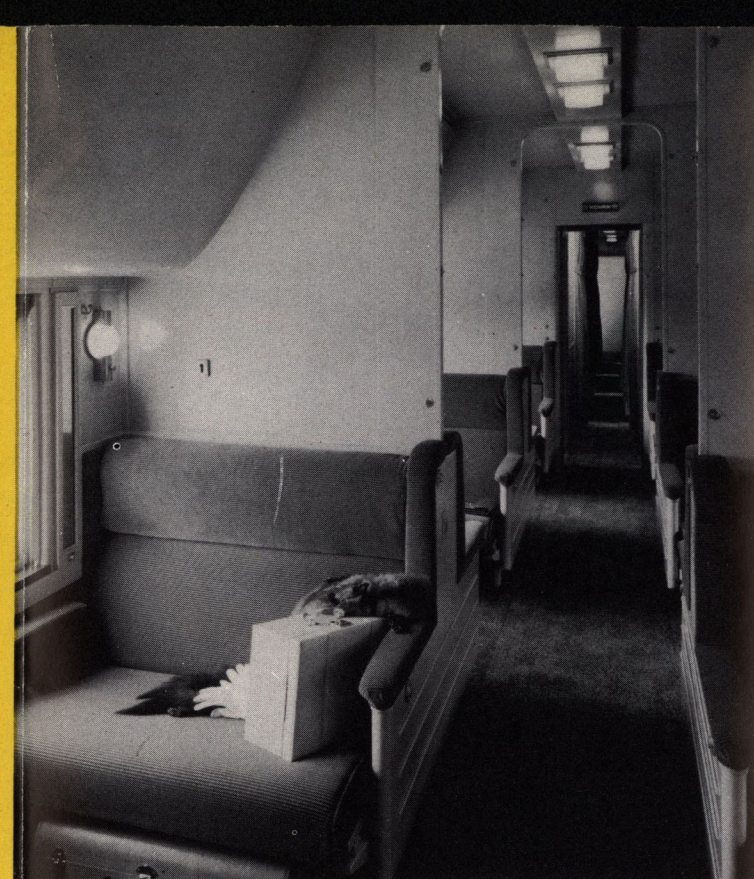
Meals are planned to assure not only pleasing variety but a well-balanced diet.

Modern Lounges

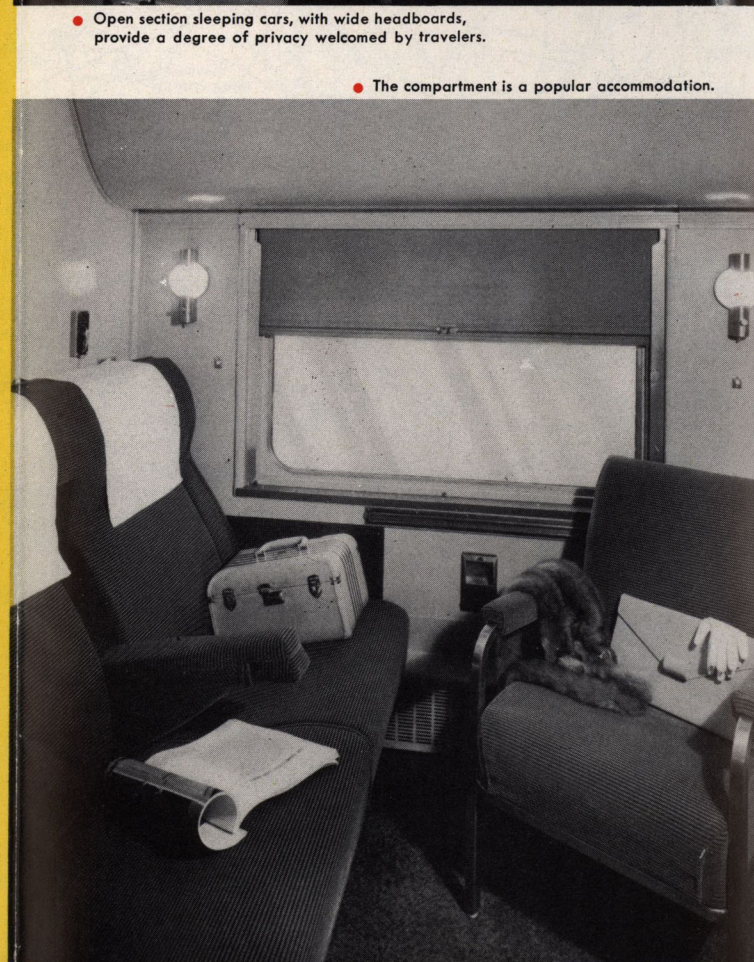
The Lounge Cars on some trains are restricted to the use of Pullman passengers who pay the first-class fare. On Streamliners and some other trains, however, there also are Lounge or Club cars for Coach passengers.

These cars are always distinctive in design, in colorful furnishings and appointments. Here one may spend pleasant hours of relaxation. There are current magazines available, writing desk with correspondence paper, and radio. Or one may join congenial fellow-passengers for conversation, cards, or the enjoyment of a favorite beverage.

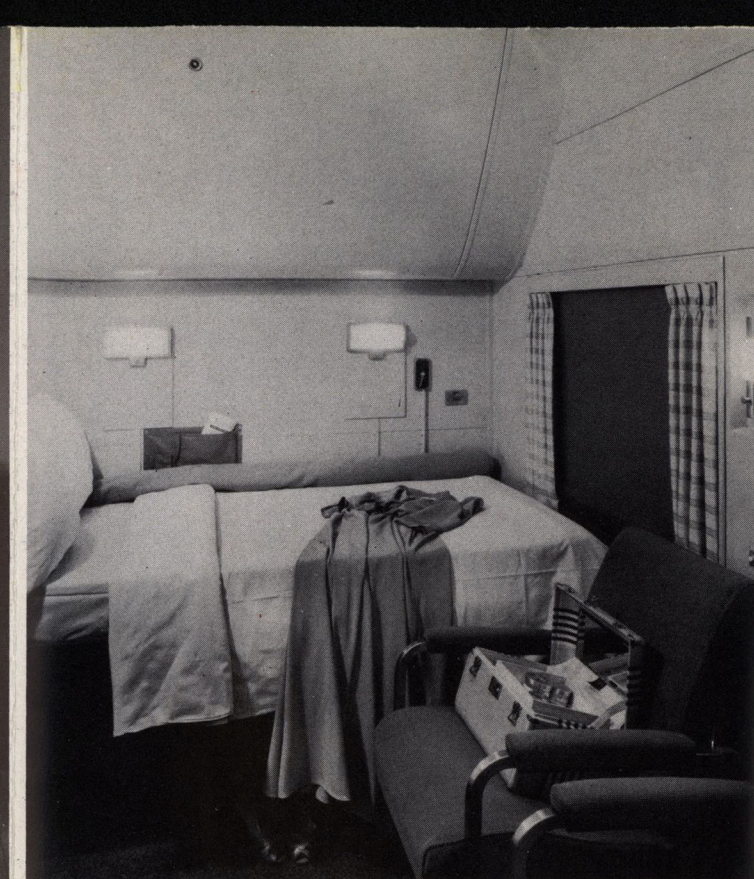
Such are the highlights of a journey which make train travel so enjoyable.



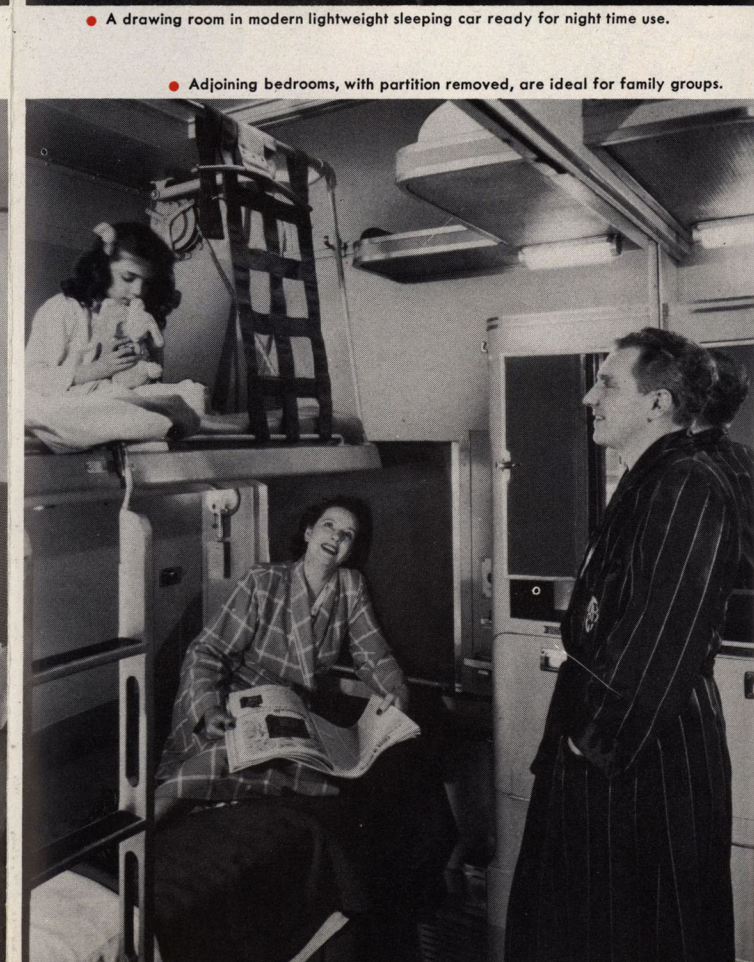
Open section sleeping cars, with wide headboards, provide a degree of privacy welcomed by travelers.



The compartment is a popular accommodation.



A drawing room in modern lightweight sleeping car ready for night time use.



Adjoining bedrooms, with partition removed, are ideal for family groups.



Interior of modern Union Pacific dining car where passengers are served those famous Overland Route "meals that appeal."



Modern observation-lounge cars add to the pleasure of a trip on Union Pacific. The "Little Nugget," decorated in the "Gay Nineties" theatrical manner, is one of Union Pacific's unique lounge cars.



Plan Your Trip with Expert Help

Any of our representatives at the offices listed will be glad to assist with all details of your trip, at no cost to you. Contact the one closest to you.

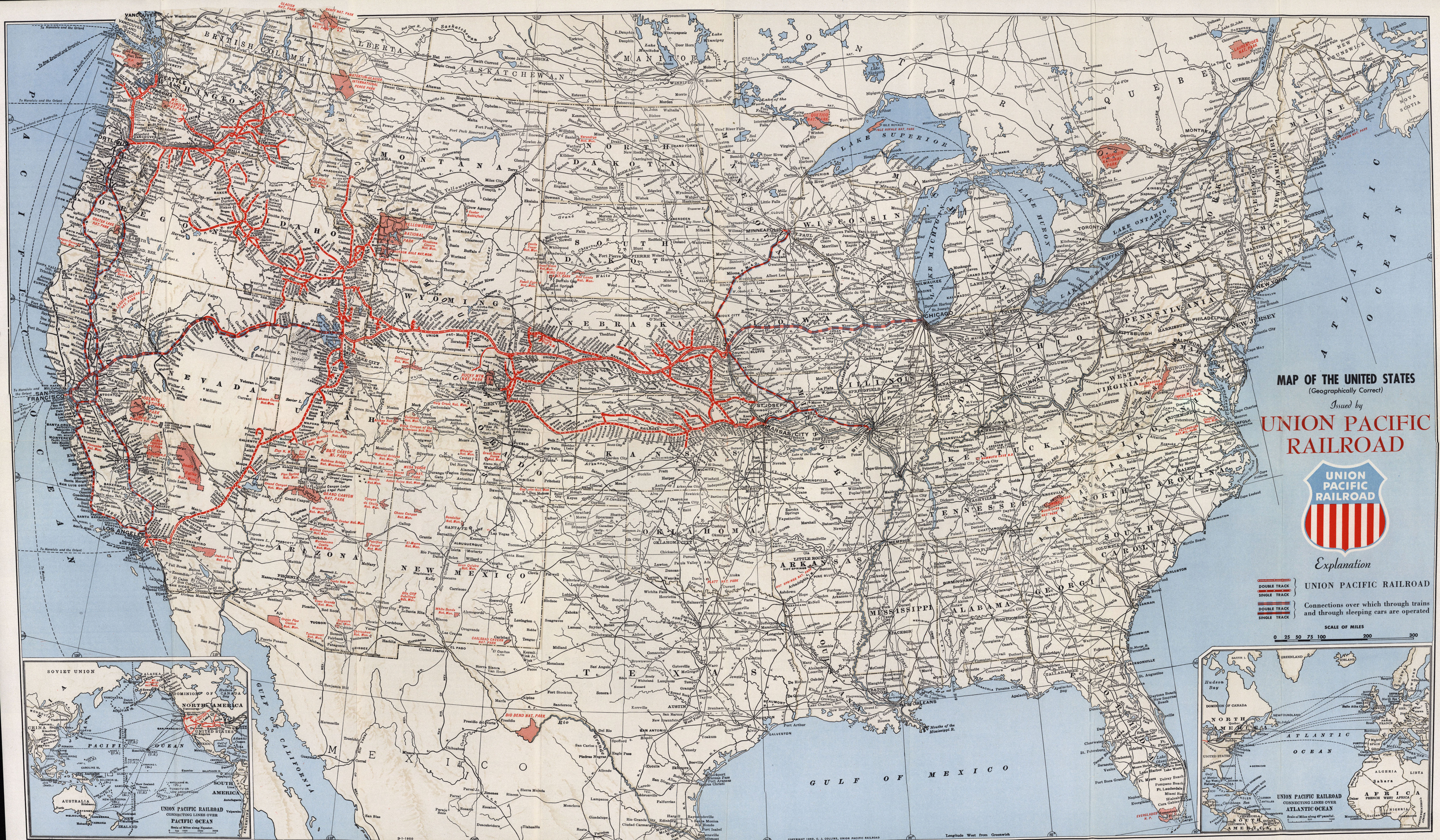
ABERDEEN, WASH.	3 Union Passenger Station, K and River Streets
ALHAMBRA, CALIF.	City Ticket Office, 51 So. Garfield Ave.
ASTORIA, ORE.	438 Commercial Street
ATLANTA 3, GA.	1432 Healey Building
BEND, ORE.	1054 Bond Street
BIRMINGHAM 3, ALA.	701 Brown-Marx Bldg., First Ave. and 20th St., North
BOISE, IDAHO	City Ticket Office, Idaho Bldg., 212 N. 8th Street
BOSTON 8, MASS.	208 Old South Bldg., 294 Washington Street
BUTTE, MONT.	609 Metals Bank Bldg., 8 West Park Street
CHEYENNE, WYO.	City Ticket Office, 120 West 16th Street
CHICAGO 3, ILL.	City Ticket Office, 1 S. LaSalle Street
CHICAGO 3, ILL.	Freight Department, 11 S. LaSalle Street
CINCINNATI 2, OHIO	303 Dixie Terminal Building
CLEVELAND 13, OHIO	1407 Terminal Tower, 50 Public Square
COUNCIL BLUFFS, IA.	Union Pacific Transfer Depot
DALLAS 1, TEXAS	2108 Mercantile Bank Bldg.
DENVER 2, COLO.	City Ticket Office, 535 Seventeenth Street
DES MOINES 9, IA.	407 Equitable Bldg., 6th and Locust Streets
DETROIT 26, MICH.	612 Book Bldg., 1249 Washington Boulevard
EAST LOS ANGELES, CALIF.	5454 Ferguson Drive
EUGENE, ORE.	201 Ardel Offices, 33 East 10th Ave.
FRESNO 1, CALIF.	207 Rowell Bldg., Tulare Street and Van Ness Avenue
GLENDALE 3, CALIF.	City Ticket Office, 404 1/2 North Brand Boulevard
HOLLYWOOD 28, CALIF.	City Ticket Office, 6702 Hollywood Boulevard
HUNTINGTON PARK, CALIF.	City Ticket Office, 7002 Pacific Blvd.
KANSAS CITY 6, MO.	City Ticket Office, 2 East Eleventh Street
KANSAS CITY 6, MO.	Freight Department, 200 Waldheim Bldg., 6 East 11th St.
LAS VEGAS, NEVADA	Union Pacific Station
LEWISTON, IDAHO	Room 7, Union Depot
LINCOLN 8, NEB.	City Ticket Office, 130 S. 13th Street
LONG BEACH 2, CALIF.	City Ticket Office, 144 Pine Avenue
LONGVIEW, WASH.	Freight Station, 7th and Hudson Sts.
LOS ANGELES 14, CALIF.	City Ticket Office, Union Pacific Bldg., 608 S. Olive St.
MEMPHIS 3, TENN.	1137 Sterick Bldg., 8 North Third Street
MILWAUKEE 3, WIS.	814 Warner Bldg., 212 W. Wisconsin Avenue
MINNEAPOLIS 2, MINN.	800 Northwestern Bank Bldg., 620 Marquette Avenue
NEW ORLEANS 12, LA.	504 Nat'l Bank of Commerce Bldg., 210 Baronne Street
NEW YORK 20, N. Y.	626 Fifth Ave., Suite 350, Rockefeller Center
OAKLAND 12, CALIF.	215 Central Bank Bldg., 436 14th Street
OGDEN, UTAH	City Ticket Office, Ben Lemond Hotel Bldg.
OMAHA 2, NEB.	City Ticket Office, 1614 Farnam Street
OMAHA 2, NEB.	City Ticket Office, Corner 15th and Dodge Streets
PASADENA 1, CALIF.	Union Pacific Station, 205 West Colorado Street
PHILADELPHIA 22, PA.	904 Girard Trust Bldg., Broad St. and S. Penn Square
PITTSBURGH 22, PA.	1419 Oliver Bldg., Smithfield Street and Sixth Avenue
POCATELLO, IDAHO	Union Pacific Passenger Station
POMONA, CALIF.	Union Pacific Passenger Station
PORTLAND 5, ORE.	City Ticket Office, 701 S. W. Washington Street
PORTLAND 5, ORE.	Freight Department, 751 Pittcock Block
RENO, NEV.	209 American Bldg., 131 West Second Street
RIVERSIDE, CALIF.	Union Pacific Passenger Station, 7th and Vine Streets
SACRAMENTO 14, CALIF.	217 Forum Bldg., 1107 Ninth Street
ST. JOSEPH 2, MO.	City Ticket Office, 516 Francis Street
ST. LOUIS 1, MO.	1223 Ambassador Bldg., 411 North 7th Street
SALT LAKE CITY 1, UTAH	City Ticket Office, Hotel Utah, Main and S. Temple Sts.
SAN DIEGO 1, CALIF.	City Ticket Office, 320 Broadway
SAN FRANCISCO 2, CALIF.	City Ticket Office, Geary at Powell Street
SAN JOSE 13, CALIF.	206 First National Bank Bldg.
SAN PEDRO, CALIF.	City Ticket Office, 805 South Pacific Ave.
SANTA ANA, CALIF.	City Ticket Office, 305 North Main Street
SANTA MONICA, CALIF.	City Ticket Office, 307 Santa Monica Boulevard
SEATTLE 1, WASH.	City Ticket Office, 1300 Fourth Avenue at University
SEATTLE 4, WASH.	Freight Department, 204 Union Station, 4th Ave. and Jackson St.
SIoux CITY 4, IA.	405 Commerce Bldg., 520 Nebraska Street
SPOKANE 8, WASH.	City Ticket Office, 727 Sprague Avenue
STOCKTON 6, CALIF.	207 California Bldg., 11 So. San Joaquin St.
TACOMA 2, WASH.	City Ticket Office, 114 S. Ninth Street
TORONTO 1, ONTARIO	201-2 Canadian Pacific Bldg., 69 Yonge Street
TULSA 3, OKLA.	823 Kennedy Bldg., 321 S. Boston Street
WALLA WALLA, WASH.	First Nat'l Bank Bldg., 2nd and Alder Streets
WASHINGTON 5, D. C.	600 Shoreham Building, 15th and H. Sts., N. W.
WINSTON-SALEM 3, N. C.	632 Reynolds Bldg., 4th and Main Streets
YAKIMA, WASH.	Union Pacific Bldg., 104 West Yakima Avenue

UNION PACIFIC RAILROAD

PRINTED IN U. S. A.

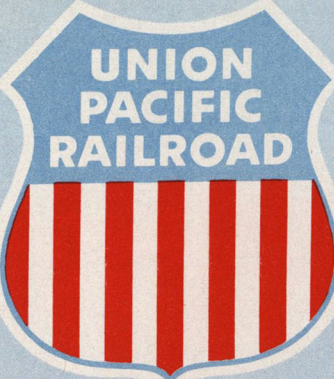
10-50

RAND McNALLY, CHICAGO



MAP OF THE UNITED STATES
(Geographically Correct)

Issued by
**UNION PACIFIC
RAILROAD**



Explanation

UNION PACIFIC RAILROAD
Connections over which through trains
and through sleeping cars are operated

SCALE OF MILES
0 25 50 75 100 200 300

