

TELEPHONE DIRECTORY

OCTOBER, 1936

GRANDVIEW,
WAPATO,

PROSSER,
ZILLAH—GRANGER,

SUNNYSIDE—MABTON,
BICKLETON,

TOPPENISH,
ROOSEVELT

OREGON-WASHINGTON TELEPHONE COMPANY

Sunnyside Sun (printing) **673**

INFORMATION FOR TELEPHONE USERS

Good service depends largely upon the measure of co-operation afforded the Telephone Company by the public. The observance of the following suggestions and instructions will greatly facilitate the successful operation of the service.

The Telephone Directory is issued for your convenience. Please use it. If you do not have a Directory, notify the Telephone Office and one will be mailed to you.

If you can not find the desired number in the Directory, call "Information." When "Information" gives you the number, make a memorandum of it for future reference.

Speak directly into the mouthpiece of your telephone.

Speak slowly and distinctly.

When your telephone rings, answer it promptly. Extend the party calling you the same courtesy that you desire yourself.

If your telephone is out of order, call "Complaint Department."

For Long Distance service call "Long Distance."

For other than business conversations, operators have instructions to take the line after five minutes.

This Directory is issued by the Company for the convenience of the subscriber and not as a fulfillment of a contract. The Company assumes no liability on account of errors or omissions.

LONG DISTANCE SERVICE

Station-to-Station Calls—A Station-to-Station call is one on which the calling party DOES NOT SPECIFY A PARTICULAR PERSON to be reached but gives only the number of the telephone station desired or the name and address (or the name only, if the address is not known) of the subscriber under which the telephone is listed. A charge is made if connection is completed to the called number.

To make a Station-to-Station call ask for "Long Distance," and when "Long Distance" answers say: "This is a Station-to-Station call" and then give your telephone number and the name, followed by the name of the exchange and telephone number desired, and remain with the receiver at your ear until the operator indicates that you may hang up the receiver.

Station-to-Station calls will also be accepted if you do not know the number wanted but will give the name and address (or the name only, if the address is not known) of the subscriber under which the telephone is listed, to the Long Distance operator and tell her you will talk to ANYONE there.

Person-to-Person Call—A Person-to-Person call is one on which the calling party specifies a particular person to be reached at the called place or a particular station on a private branch exchange. Under certain conditions, described hereinafter under "Report Charges," a partial charge will be made where it is impossible to establish communication on a Person-to-Person call.

To make a Person-to-Person call, ask for "Long Distance" and when the Long Distance operator answers say: "This is a Person-to-Person call" and then give the details of your call in the following order:

1. The telephone number from which the call is made and the name of the person desiring to talk.
2. The name of the city or town (and state) in which the desired person is located.
3. The telephone number desired, if known; if the telephone number is not known, name and address (or the name only, if the address is not known) of the subscriber under which the telephone is listed.
4. The name of the person with which you wish to speak and the name of the alternate person, if you are willing to talk with anyone else in case the person desired cannot be reached.

Remain with the receiver at your ear until the operator indicates that you may hang up the receiver.

Report Charges

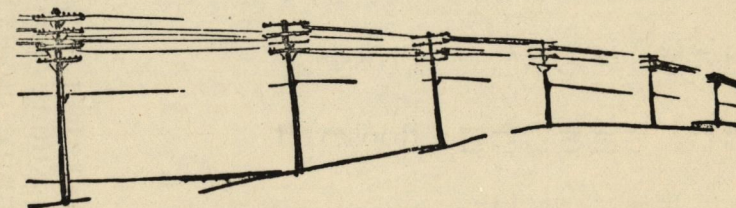
Report Charges—A Report Charge will be made on Person-to-Person calls, including Messenger and Appointment calls, which cannot be completed for the following reasons:

1. The called party is not available at the called station or refuses to talk, or to accept the charge on a collect call, and a report to this effect is given the calling number within one hour from the time the call is given to "Long Distance."
2. When the call is ready for completion, the calling party is not available, or refuses to talk, or no answer can be obtained from the calling station, provided this report is obtained within one hour from the time the call is given to "Long Distance."
3. If an appointment call is not completed after the appointment has been definitely arranged with the called telephone.
4. If a Messenger call is not completed after arrangements have been made to notify the called party to come to a telephone.

The Report Charge is compensation for the operating work performed and is approximately one-fourth the initial Station-to-Station rate between the points involved. The minimum Report Charge is 5c and the maximum \$2.00. A report charge, in addition to the charge for the call, is not made provided the call is completed on the day on which it is filed.

Collect Calls

Collect Calls—Upon request of the calling party, the charges on long-distance calls, including messenger charges, if any, will be collected at the called station, if such charges are accepted by the called party. Request to have the charges collected in this way should be made when the call is given to the Long Distance operator.



YOUR HOME DESERVES PROTECTION

A telephone on a farm is the greatest obstacle to rural thieves. A telephone can head off the theft of your chickens, hogs, harness and gasoline—and warn folks down the road of the crooked peddler and the vicious tramp. The farm without a telephone is isolated from outside assistance. Quick reporting of crime demands a telephone to save precious minutes. You need a telephone to give your family and property protection they deserve.

"The Modern Farm Home Needs a Telephone"

INSTRUCTIONS FOR SUBSCRIBERS LOCAL TOLL SERVICE

The Oregon-Washington Telephone Company has established direct trunk line connections between Arlington (Ore.), Benton City, Bickleton, Grandview, Paterson, Prosser, White Swan, and Zillah. Subscribers wishing to talk to any of the towns listed below **SHOULD ASK FOR LONG DISTANCE.**

STATION-TO-STATION RATES

	Arlington	Benton City	Bickleton	Grandview	Paterson	Prosser	Roosevelt	Sunnyside	Toppenish	Wapato	White Swan	Zillah
Arlington, Oregon11	.11	.20	.11	.11	.11	.10	.11	.11	.11	.11	.11
Benton City, Wash.11	.11	.40	.20	.20	.15	.45	.25	.35	.40	.55	.35
Bickleton, Wash.20	.40	.11	.25	.30	.25	.15	.25	.25	.30	.30	.25
Grandview, Wash.11	.20	.25	.11	.25	.10	.30	.10	.15	.20	.35	.15
Paterson, Wash.11	.20	.30	.25	.11	.20	.30	.30	.40	.45	.55	.40
Prosser, Wash.11	.15	.25	.10	.20	.11	.30	.15	.20	.25	.40	.20
Roosevelt, Wash.10	.45	.15	.30	.30	.30	.11	.35	.35	.40	.40	.35
Sunnyside, Wash.11	.25	.25	.10	.30	.15	.35	.11	.10	.15	.30	.10
Toppenish, Wash.11	.35	.25	.15	.40	.20	.35	.10	.11	.10	.20	.11
Wapato, Wash.11	.40	.30	.20	.45	.25	.40	.15	.10	.11	.15	.10
White Swan, Wash.11	.55	.30	.35	.55	.40	.40	.30	.20	.15	.11	.20
Zillah, Wash.11	.35	.25	.15	.40	.20	.35	.10	.11	.10	.20	.11

Sunnyside Land & Investment Co.

PHONE (SUNNYSIDE) 643

Covering the Entire Valley—Since 1902

BUILDING—DEVELOPING

BUYING—SELLING

RENTING and INSURING

Real Estate

34 YEARS Experience in the ***SAME LINE***
on the ***SAME SPOT in the SAME TOWN***

ROZA —GOVERNMENT IRRIGATION PROJECT—
Now building within 3 miles of 12 Valley Towns
75,000 ACRES OF NEW LAND

FEDERAL LAND BANK SALES



SUNNYSIDE LAND & INVESTMENT COMPANY

Since 1902

Sunnyside, Wn.

EAT IN COMFORT

** The excellence of our cuisine is famous. There's comfort and quiet refinement as well as fine food here

A Menu and Prices You'll Like

** Drop in for luncheon today and you'll surely be bringing your wife for dinner tonight

WE HAVE AN EXCELLENT MENU WHICH YOU WILL LIKE REGARDLESS OF THE TIME OF THE DAY YOU COME IN

AUSTIN'S CAFE

"COME IN AS YOU ARE"

Telephone 904—SUNNYSIDE



HASKINS CHAPEL

(The Haskins Co.)

SUNNYSIDE, WASHINGTON

SUNNYSIDE
Phone 1961

FUNERAL
DIRECTORS

GRANDVIEW
Phone 691

Wanted

Your live or dead horses and cows. Our truck calls almost every day at Grandview, Tieton, Toppenish and White Swan.

No charge for hauling. We pay for one telephone call

YAKIMA TELEPHONE NUMBERS

Plant Phone—3755

Residence Phone—3547

AMERICAN PRODUCTS COMPANY

YAKIMA

MEETING DAYS OF CLUBS AND COUNCILS

COMMERCIAL CLUBS

PROSSER COMMERCIAL CLUB	Meets every Tuesday noon
GRANDVIEW COMMERCIAL CLUB	Meets every Tuesday noon
MABTON COMMERCIAL CLUB	Meets 2nd and 4th Mondays
SUNNYSIDE COMMERCIAL CLUB	Meets every Tuesday noon
ZILLAH COMMERCIAL CLUB	Meets 2nd and 4th Tuesdays
TOPPENISH COMMERCIAL CLUB	Meets every Wednesday noon
WAPATO COMMERCIAL CLUB	Meets every Wednesday noon

CITY COUNCILS

PROSSER CITY COUNCIL	Meets 2nd Tuesday of each month
GRANDVIEW CITY COUNCIL	Meets 1st and 2nd Mondays
MABTON CITY COUNCIL	Meets on the 2nd and 4th Tuesdays
SUNNYSIDE CITY COUNCIL	Meets on the 1st Monday
ZILLAH CITY COUNCIL	Meets on the 1st and 3rd Mondays
TOPPENISH CITY COUNCIL	Meets on Friday Mornings
WAPATO CITY COUNCIL	Meets on 2nd and 4th Mondays
GRANGER CITY COUNCIL	Meets on the 2nd Tuesday

ROTARY CLUBS

SUNNYSIDE ROTARY CLUB	Meets every Monday noon
TOPPENISH ROTARY CLUB	Meets every Monday noon
PROSSER ROTARY CLUB	Meets every Thursday noon

Valley Hay & Grain Co.

SUNNYSIDE - - - PHONE 603

RESIDENCE PHONES

ED L. ALBRO—524

WALTER W. FRY—2322

Foremost in the Field

***JOHN DEERE IMPLEMENTS
TRACTORS and REPAIRS***

“Good Values in Used Implements”

***EACH DAY CONTINUOUS ELECTRIC SERVICE
IS BECOMING MORE AND MORE AN
ABSOLUTE NECESSITY***

You will aid us in maintaining as near as possible an uninterrupted service to you by the prompt use of your telephone in case of trouble. For your convenience we have listed in this directory, under our Company name, our servicemen and line foreman, who may be called after office hours.

**PACIFIC POWER &
LIGHT COMPANY**

“Always at Your Service”