

A scenic landscape photograph of a calm lake. In the foreground, a young girl in a floral dress sits on the left, and a man in a red shirt and fishing gear stands on the right, casting a fishing line. The lake's surface reflects the sky and the distant mountain. On the left, a dense forest of evergreen trees stands tall. In the background, a large, rugged mountain with significant snow cover rises against a blue sky with light clouds. Two small black silhouettes of people are positioned on either side of the title box.

Fascinating
**WASHINGTON
STATE**

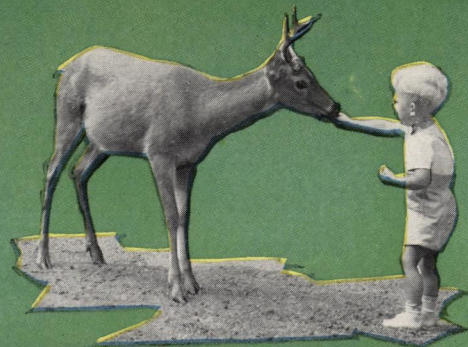
Mt. St. Helens and Spirit Lake

“Where It’s Good to Be Alive”



The Mountain the Indians Called God

Mount Rainier National Park, 241,782 acres of natural loveliness and grandeur, is a mecca for sightseers, camera enthusiasts, mountain climbers, fishermen, and skiers. The Mountain towers to a height of 14,408 feet and its glacial systems are greater than those of the Swiss Alps. Set in a park-like paradise of flower-carpeted mountain meadows, giant forests, glacial rivers, and cascading waterfalls it is a never-to-be-forgotten sight of awe-inspiring beauty.



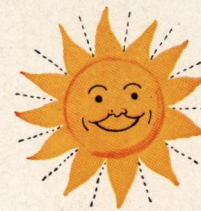
***You must see it
to believe it . . .***



We think you are going to like Washington State—in fact you may fall in love with it as those of us who have decided to live here have done.

At any rate, you'll find it the vacation land of your dreams—and it doesn't make much difference what your particular dream of a perfect vacation may be. Washington State is so big, so varied, and (we promise you!) so beautiful that you just can't help being happy out here.

Let's suppose you like to fish. Well, you can spend a lifetime doing that here and not double back once over the lakes, streams, and inland seas of this state. Your mouth will water when you see the catches



on display at sporting goods stores. Chunky bass from nearby lakes. Forty-pound salmon from Puget Sound. Rainbow, cutthroat, and steelhead trout from the Skagit, Stillaguamish, Dosewallips, Humptulips, Stehekin, and literally hundreds upon hundreds of other streams.

What we say about fishing goes for hunting, too. Elk, deer, bear, pheasants, grouse, ducks, geese—they're all here in mountains, woods, valleys, and prairies.

Of course lots of folks like to spend a vacation just loafin' and lookin'. On that score, Washington State can keep you so

busy looking you may forget to loaf. Sunsets on Puget Sound, glorious sweeps of ocean beaches along the blue Pacific, fantastic painted deserts and prehistoric canyons, giant primeval forests, magnificent rivers, rolling hills of rangeland and pine trees stretching farther than the eye can reach . . .

And we haven't even mentioned mountains, yet. Do you know that when folks go to Sunrise Park or Paradise Valley and see the mists rise and all the glory and grandeur of Mt. Rainier come into view their knees tremble and tears come to their eyes? They understand then why it's the Mountain the Indians called God.

Rainier is known the world over, but we're just as proud of St. Helens, Baker, Adams, Glacier, Olympus, and others that tower above even our mighty mountain ranges. From many vantage points you see three or four of them at once shining up into the blue—and man, that's something!

(Continued on Page 14)





(above) Lake Quinault is one of many beautiful fishing lakes in the magnificent Olympic Peninsula.

(left) Yes, salmon are caught everywhere on Puget Sound—in the shadow of seaport skyscrapers, off wooded islands, and in sheltered coves and bays.

(below) Olympic National Park has 835,411 acres of unspoiled but easily accessible wilderness with fine resorts, inns, and cabin camps near at hand.



Visit Famed National Parks

Olympic National Park spreads before the nature-lover 835,411 acres of unspoiled yet easily accessible wilderness. It is an amazing area of glorious mountains, giant forests, wild game, and trout-filled lakes and streams. Five fine highways lead into Mount Rainier National Park, a year-round playground where flowers and glaciers meet. Varied accommodations, including free camp grounds, are to be found at both parks.

Fish Lakes, Streams, Inland Seas

Fishermen have more than 1,200 well-stocked lakes and thousands of streams to lure them. Rainbow, cutthroat, steelhead, Dolly Varden, and brook trout abound in the streams and bass, perch, crappie and other species as well as trout are found in the lakes. Island-dotted Puget Sound is an angler's paradise where fighting salmon up to forty and more pounds are caught. Boats and tackle at low rentals are available everywhere.

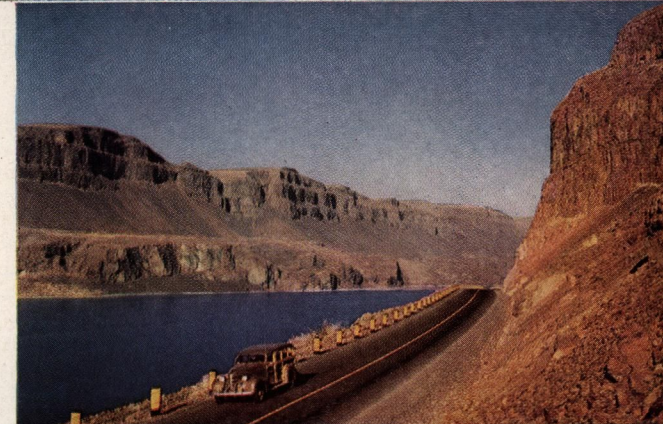


(above) The days of the old west can be relived in the invigorating atmosphere of central and eastern Washington.

(right) Fine highways such as this in the Sun Lake State Park region criss-cross the state making its varied beauties easy to reach.

(below, left) The bounteous orchards of the Yakima, Wenatchee, and Okanogan regions are world-famous for their fine fruits.

(below, right) Ohme's Gardens near Wenatchee illustrates the fertility of central Washington's soils when water is brought to them.



Explore the Old Wild West

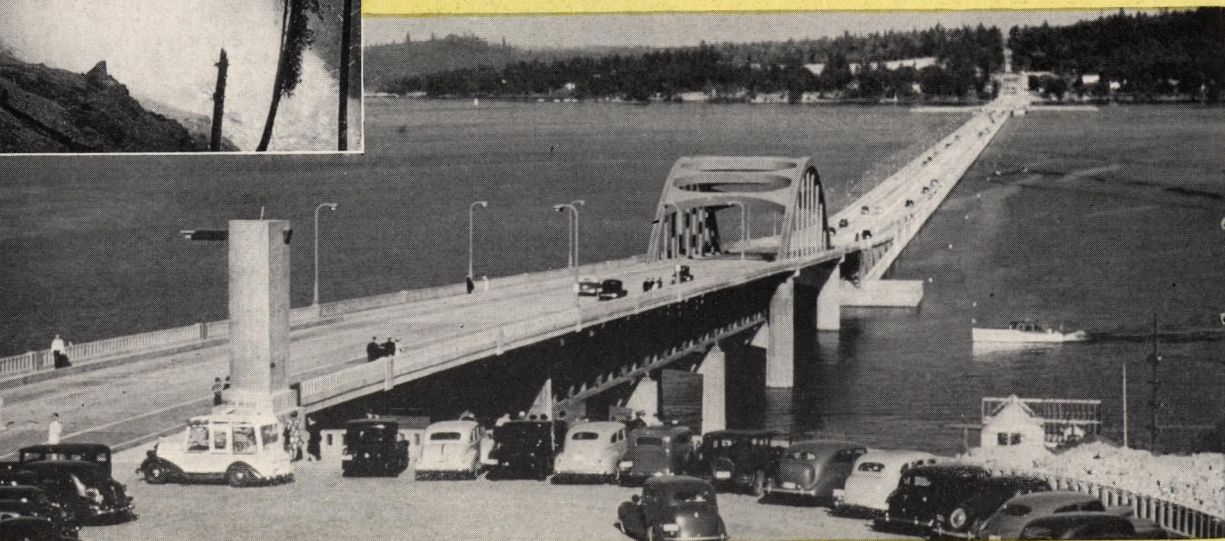
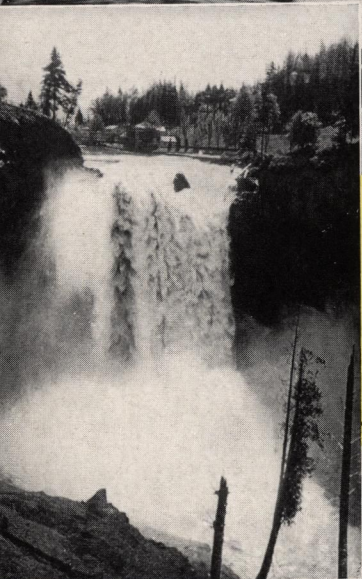
In the foothills and on the prairies, plump beef cattle and sheep graze on rich grasses. Real cowboys and sheepherders ride the range but the old days of the wild west can be lived comfortably on various dude ranches amid glorious scenery and with good fishing and hunting near at hand. Fine highways lead through rugged and scenic Indian Reservation lands where wild game abounds in the hills and valleys.

See Rich Farms and Orchards

The beautiful valleys of Yakima, Wenatchee, and Okanogan produce more than one-third of the nation's apple crop—highly-prized Washington apples of giant size and sun-packed sweetness. Vast grainfields of stupendous yield are found in the fertile rolling hills of the Palouse, Walla Walla, and Big Bend countries. Throughout the state both field crop and livestock farming are varied and bounteous.



(above) In Deception Pass State Park on Puget Sound this bridge connects Whidby, the nation's second largest island, to the mainland.
 (left) Snoqualmie Falls (268 feet) is but one of many Washington waterfalls. The Cascade range of mountains was given its name because of the numerous streams that cascade and fall down its slopes.
 (below) The Lake Washington Floating Bridge. This is the world's longest floating bridge with more than a mile of pontoons. Twenty-six-mile-long Lake Washington is a year-round water playground and forms the eastern boundary of Seattle, the metropolis of the state.



Photograph Varied Wonders

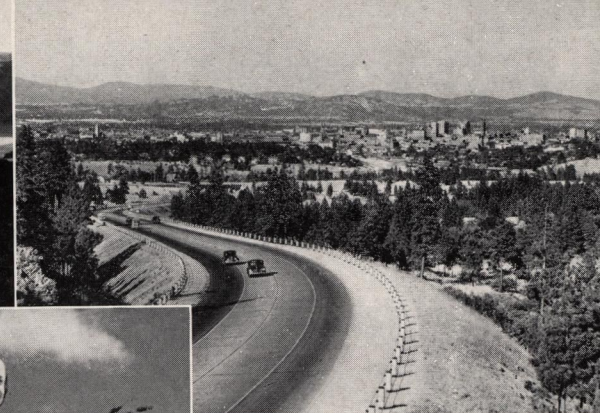
Washington State is amazingly photogenic with its mountains, coulees, inland seas, forests, lakes, rivers, and other natural beauties. Lovers of the picturesque will find fascinating scenes in Indian villages, painted deserts, seaports, rodeos, logging camps, halibut fishing fleets, and many other unique subjects peculiar to this region. Every turn of the road and every trail bring new and thrilling photographic vistas into view.

Enjoy Boating and Water Sports

On Washington's lakes and inland seas all types of craft from canoes to cruisers are available at reasonable rates. Boating is a year-around sport in Washington State. You can explore inland seas, canals, lakes, and meandering sloughs and swim in tangy, invigorating salt water or sun-warmed blue lakes. City bathing beaches are clean and well-supervised with lifeguards and roped-off areas set aside for children.



(upper left) Dry Falls State Park, where once a mile and a half river roared through a gorge 1200 feet deep and in a volume 40 times that of Niagara plunged over a 500-foot drop. South of Dry Falls is a chain of shining lakes — site of the new Sun Lake State Park development.
 (upper right) Broad highways lead into Spokane in the rich Inland Empire.



(below) Spring and winter wheat thrive in the Palouse and Big Bend countries.

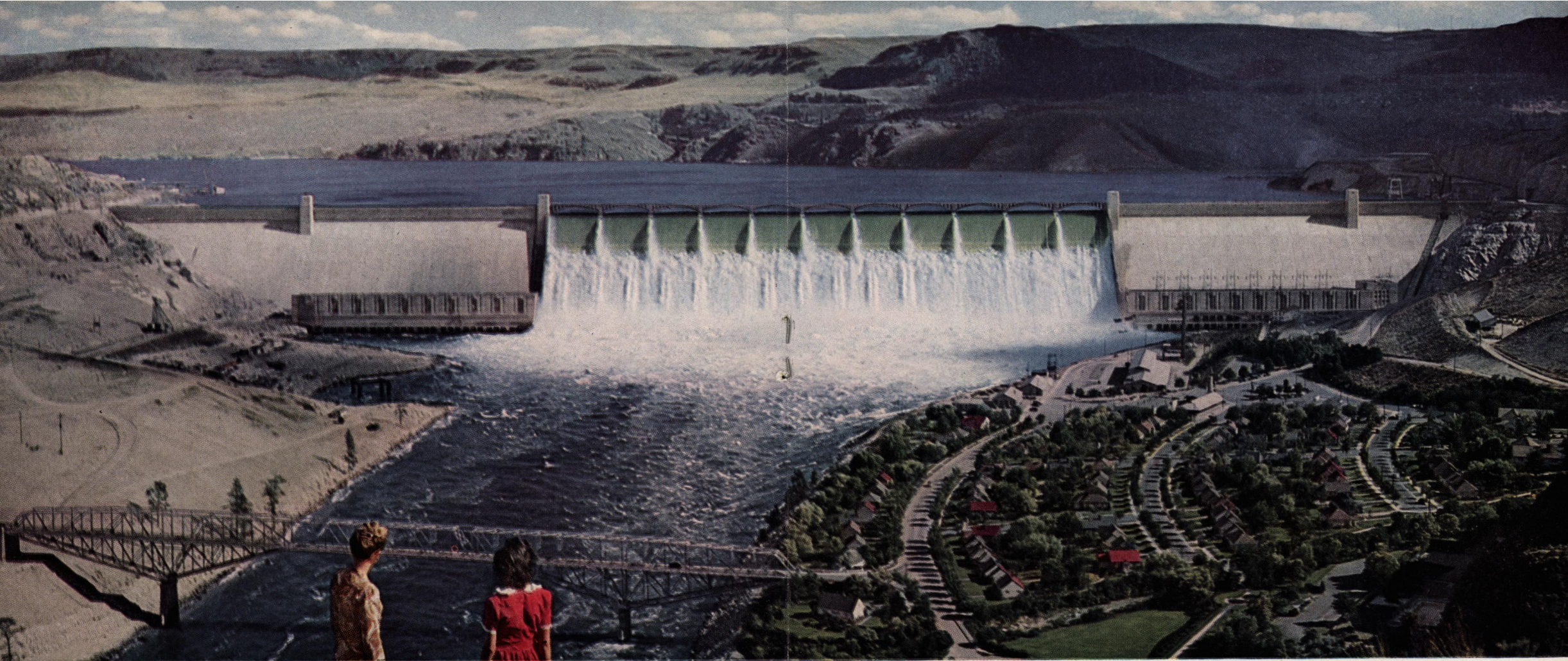


Marvel at the Inland Empire

With the City of Spokane as its center, the Inland Empire of eastern Washington is a spacious plateau of agricultural and mineral wealth set amid varied scenic beauties. The fine farms of this region are incredibly productive and all about are gem-like lake resorts and wonderful fishing streams and hunting country. In this region the sun shines brilliantly and the pine-scented air is as heady as wine.

See the Lewis and Clark Country

Winding through eastern Washington flows the Snake River, down which the memorable Lewis and Clark overland expedition made its perilous journey to the west. Off to the south are the Blue Mountains of the Walla Walla region (see back cover) and the velvety, rolling Horse Heaven Hills. North of Walla Walla billowing fields of wheat spread as far as the eye can see, shinningly green in spring and richly golden at harvest time.



See Grand Coulee Dam - Mightiest Handiwork of Man

Will generate 2,520,000 horsepower for farms, homes, industries

One-sixth of the nation's hydro-electric resources are to be found in Washington State. Out of the north and through the heart of Washington the Columbia River winds its 1200-mile journey to the Pacific Ocean. At Grand Coulee it has been harnessed by the world's largest power dam — a structure 500 feet high and 4300 feet across. So mighty are the vast hills that surround the dam that even its giant size is dwarfed by contrast. Grand Coulee Dam (which is but one of the dam projects in this area) is built to deliver 2,520,000 horsepower at the cheapest rates in the nation to serve Washington's farms, homes and growing industries. It has impounded the waters of the Columbia to form a lake 151 miles long which extends into Canada on the north and provides a navigable waterway and recreational water playground.

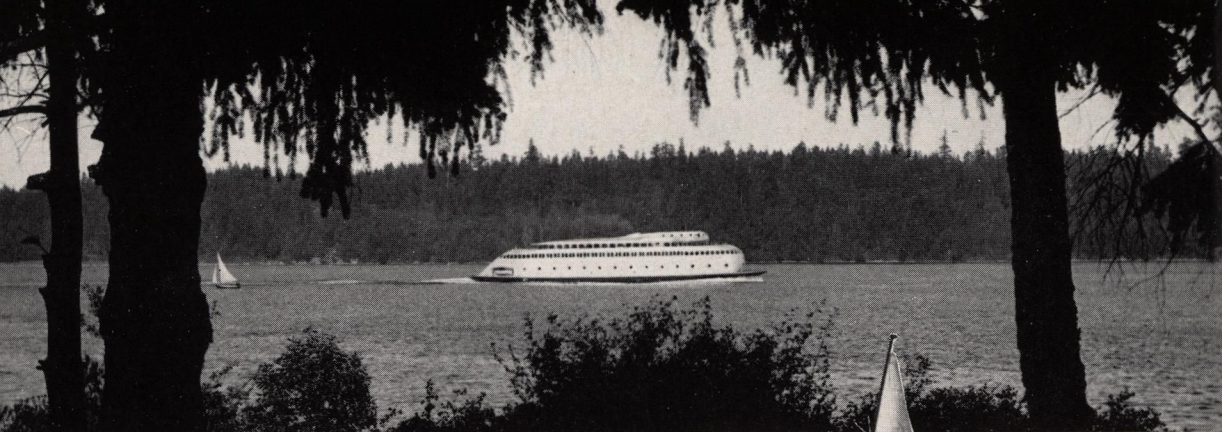
At Grand Coulee Dam, Roosevelt Lake, made by the impounded waters of the Columbia, extends north 151 miles.

Will irrigate 1,200,000 acres of hitherto arid land

Not only does Grand Coulee furnish low cost electric power but its impounded waters will transform vast tracts of arid land into rich, productive agricultural acres. Travellers into the Okanogan, Yakima, and Wenatchee valleys are amazed by the fertility of the soil in those areas where irrigation has long been practiced. The same fertility exists throughout the Columbia Basin which needs only the magic touch of water to bloom into prosperous fields and orchards. Both nature and man have worked on a large scale in this region and visitors will see unfolding one of America's most thrilling power and agricultural developments. Ten thousand or more new farms will spring into being as the waters of the Columbia are brought to the land. The state's agricultural school and experiment stations are thoroughly studying the varied crops that can be grown here.

1,200,000 acres of desert land will bloom when irrigated by the impounded waters of Roosevelt Lake.





(above) Fast ferries and comfortable steamers run to all points on Puget Sound. Digging for clams is a popular pastime on Washington's ocean and Puget Sound beaches — and so are seashore clambakes!

(below) The Columbia, America's second largest river, flows toward the Pacific along Washington's southern border and is famous for boating and salmon fishing.



Cruise Sheltered Inland Seas

Puget Sound, 2,000 miles of meandering shoreline with hundreds of wooded islands, is a paradise for fishermen, boatmen, swimmers, and sightseers. Fast ferries and comfortable steamers run to all points. You can take your car aboard if you so desire. Sheltered between two mountain ranges (the Olympics and Cascades) its sparkling waters are seldom ruffled and its beaches provide safe, fascinating playgrounds for children and adults.

Discover "Happy Hunting"

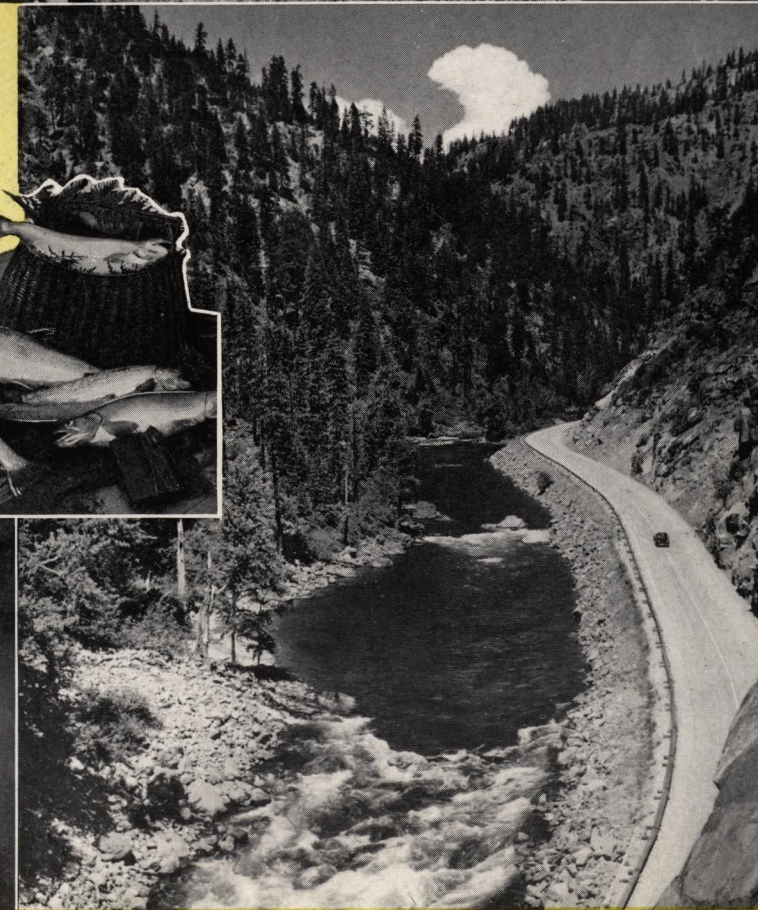
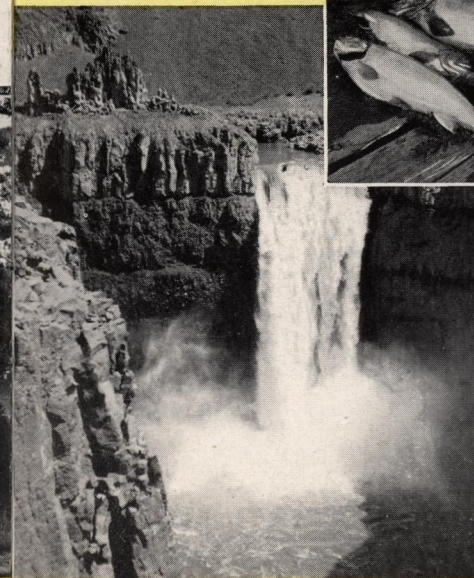
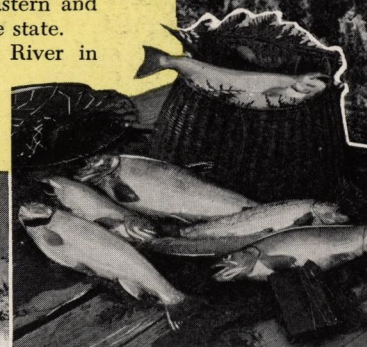
In Washington State you are next door to happy hunting country. Olympic elk are found in Western Washington and Wapiti or Yellowstone elk east of the Cascades. Mule, whitetail and black-tail deer abound throughout the state as do also a number of species of bear. Game birds are found in great numbers, among them being grouse, pheasant, quail, partridge, and a great variety of geese, ducks, and other waterfowl.



(above) Lake Chelan is a sixty-mile long, trout-filled lake set like a jewel in the eastern slope of the Cascade Mountains.

(right) Fine paved roads such as the Stevens Pass Highway closely connect the eastern and western sections of the state.

(below) The Palouse River in southeastern Washington drops 198 feet in scenic Palouse Canyon.

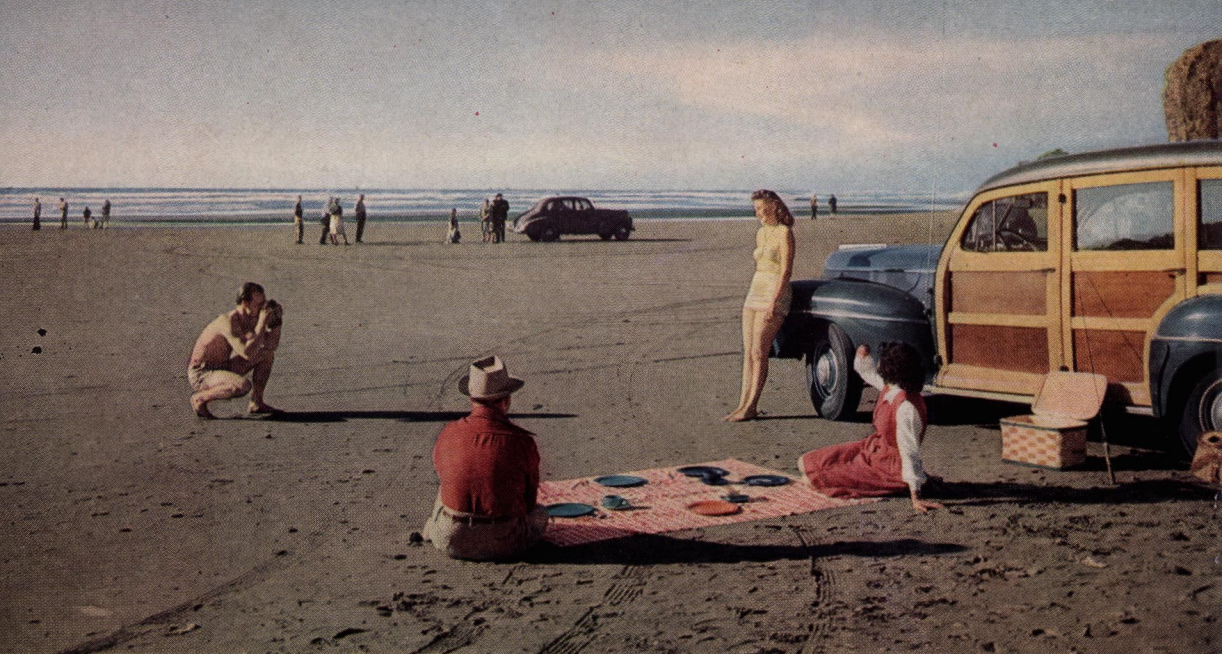


Get Close to Nature

Whatever your choice is in outings you can gratify it in Washington State. You can be as swank as you like in a seashore resort or as rugged as a trapper in a mountain fastness. You can have a cozy cabin in fishing and hunting country or a comfy lodge on a placid lake — or you can put up at a metropolitan hotel and still be within minutes of mountains, lakes, rivers, seashore, or painted deserts.

Change Climates in Two Hours

Running north and south through the center of Washington State are the majestic, snow-clad Cascade Mountains. Averaging 7,000 feet in elevation they give the state two separate and distinct climates. West of the Cascades is a lush evergreen land of giant forests and inland seas while to the east there is an invigorating country of pine forests, vast rolling hills, expansive grazing lands, and tremendous agricultural productivity.



(above) Magnificent Long Beach on the vast Pacific is outstanding even among Washington's fine hard-packed, sandy beaches.

(right) Skiing is a sport ever-growing in popularity and numerous expansive ski terrains are near at hand. Shown here is a ski cabin near Mt. Baker lodge.

(below) Athletes from all the world compete in Washington ski events.



From Sea Level to Ski Level

In Washington State it is only a matter of two hours to go from sea level to ski level. This region is fast developing into one of the most popular winter sports areas in North America. Special trains and buses provide transportation to excellent, nearby ski terrains or you may go in your car. Varied and comfortable accommodations are available. The ski season extends from late November to early May.



Explore Fascinating Beaches

Washington's ocean beaches along the blue Pacific are unexcelled for their smooth, hard, sand surfaces. The sheltered shores of Puget Sound are also lined with interesting beaches offering endless attractions. You can dig for clams and geoducks; discover crabs, starfish, kelp, jelly-fish, and other sea life; hunt for agates and gem-like stones; and enjoy sumptuous moonlight clam bakes around phosphorescent driftwood fires.



(above) Mt. Adams (12,307 feet) as seen from the Klickitat Valley near Goldendale in south-central Washington. This is a fabulous fishing and hunting country of varied scenic grandeur.

(right) Picnicking at Mt. Shuksan (9,038 feet) near Mt. Baker (10,750 feet). The many and varied beauties of Washington State are not far away and remote — they are easily accessible and can be enjoyed to the utmost.

(below) The state flower of Washington is the Rhododendron.



Picnic or Camp in Comfort

Accommodations of every sort from roadside motel to metropolitan hotel are available — but whenever the spirit moves you can picnic or camp in your choice of thousands of beauty spots. Throughout the state there are many fully equipped picnic and camp grounds in state and national parks — and you can discover ideal spots for yourself amid glorious scenery near sparkling, trout-filled streams of snow-pure, refreshing water.

See Glorious Mountains

The Cascade and Olympic mountain ranges are eternally snow-crowned. The Cascades have an average elevation of 7,000 feet and among the magnificent peaks are Mt. Baker, 10,750 feet; Mt. Shuksan, 9,038 feet; Glacier Peak, 10,436 feet; Mt. Rainier, 14,408 feet; Mt. Adams, 12,307 feet; and Mt. St. Helens, 9,671 feet. The Olympics, which rise abruptly almost from sea level, are crowned by Mt. Olympus, 7,954 feet.

Fascinating WASHINGTON STATE

(Continued from Page 3)

We love our rocks and rills, our woods and templed hills so much we have to watch out that folks don't think all we have here is a wilderness. So many people seem to have no idea of the growth and development up in this northwest corner of the United States.

Take agriculture. Washington hens hold world records for egg-laying and Washington cows hold the same for milk and butterfat production. Washington apples and other fruits walk into any markets in the world and command top prices. Whitman county in the Palouse country of the Inland Empire produces more wheat than any other comparable area in the world. If ever a land was tickled with a hoe and laughed with a harvest it's right here in Washington State.

Yes, and we have beautiful cities and towns, too. Big, bustling cosmopolitan seaports such as Seattle and Tacoma. Lovely inland cities such as Spokane, Walla Walla, Yakima, and Wenatchee. And we love our little towns, too, with their green lawns, tree-lined streets, and swimming lakes and fishing holes just around the bend.

When we're not fishing, hunting, golfing, sailing, skiing, or climbing mountains we take a little time off to go to work. We build airplanes and ocean-going ships, scoop boatloads of salmon and halibut out of the Pacific Ocean, harness the Columbia River with the biggest dams ever built, irrigate a million acres at

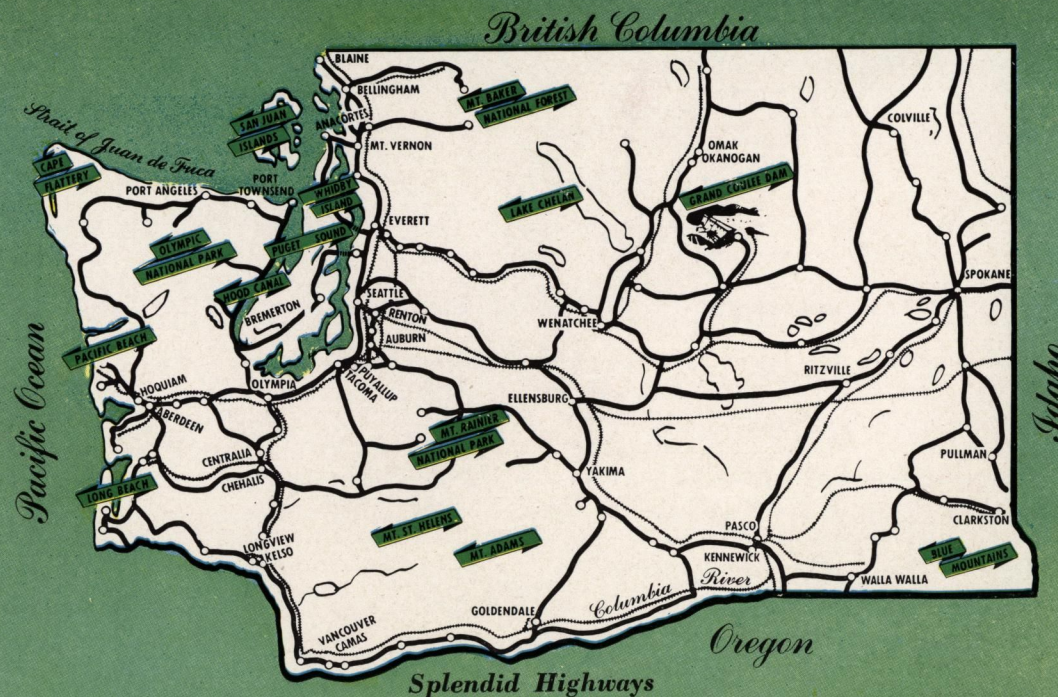
one crack, fell giant trees, and operate the world's largest lumber mills.

As for the rest of it, we're folks pretty much like you. We go to the church of our choice (if we choose) on Sunday, take a lot of pride in our lawns and flowers, send our children to mighty fine schools, root for our University and State College (particularly when we put a team in the Rose Bowl or send a crew to the Olympics) and in general behave like run-of-the-mill Americans.

If we have any major obsession it's the firm belief that we're living in Paradise—and a desire to share its fun and its beauty with others.

Air lines, buses, trains, or your own car will bring you here quickly. You can find just the accommodations you want, too, whether it be a swanky metropolitan hotel, beach resort, mountain cabin, dude ranch, roadside motel, or a place to pitch your tent or park your trailer.

Our latch string is out. If you don't find us in when you come you might look for us cruising Puget Sound, or packing into the Okanogan hills with an Indian guide, or skiing in the Snoqualmie Bowl. But just make yourself at home. Wherever you go in Washington State you'll find us—havin' fun and smilin' "Welcome."



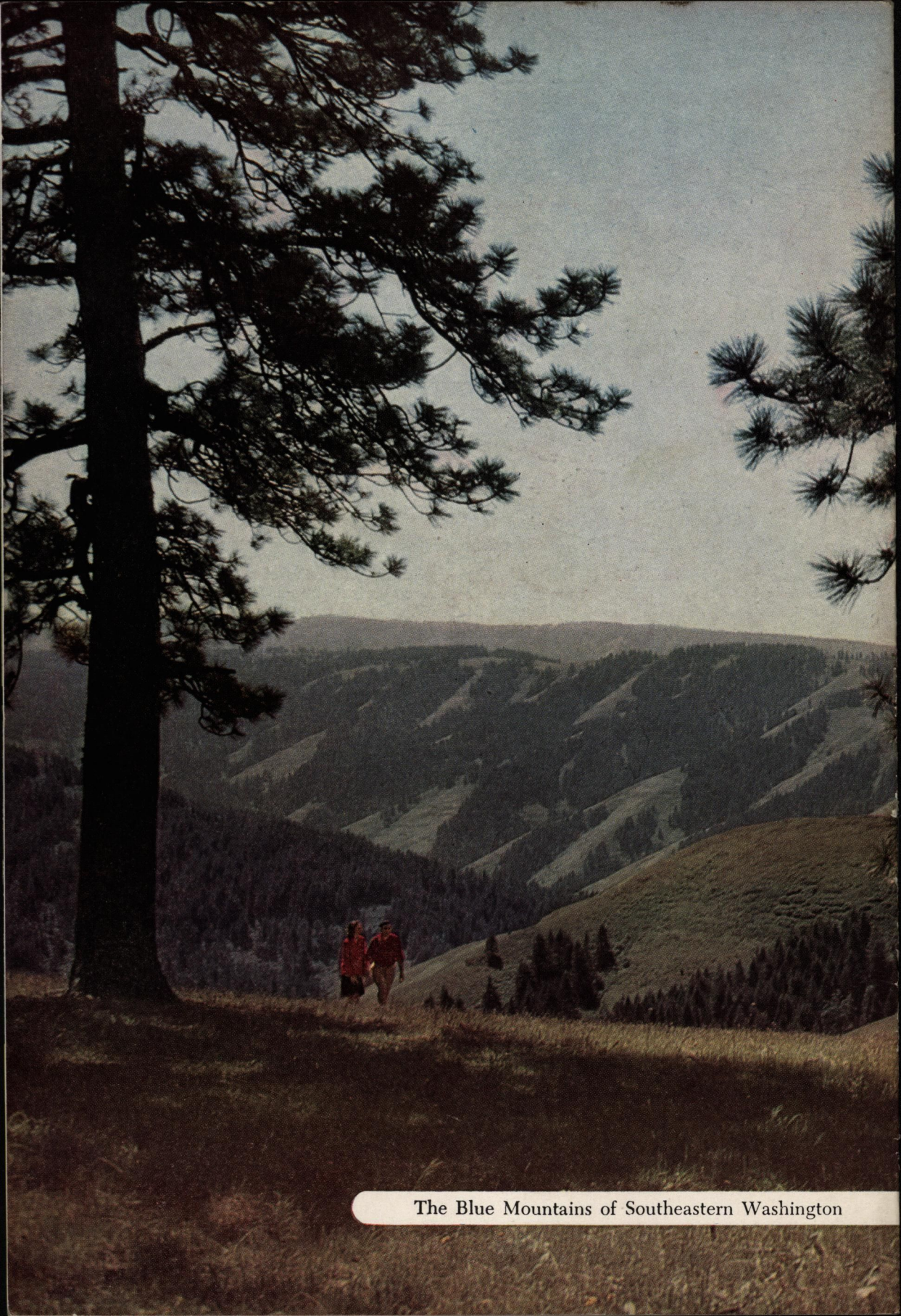
Motorists will find 6,242 miles of paved State Highways and 30,000 miles of other improved roads to take them to all the beauty spots of the state. All roads are clearly marked and the motorist will experience no difficulty in finding any desired destination on Washington's smooth highways.

Washington State Capitol

The City of Olympia is capital of Washington State. The capitol buildings and grounds are considered among the most beautiful in the nation.

For Further Information

Air, rail, and bus lines will be glad to give you full information on rates, schedules, stop-over privileges, etc., in connection with your trip to Washington State. Requests for specific or additional information not covered in this booklet may be addressed to—
DEPARTMENT OF CONSERVATION
& DEVELOPMENT
Room 8491, Transportation Building
State Capitol
Olympia, Washington.



The Blue Mountains of Southeastern Washington