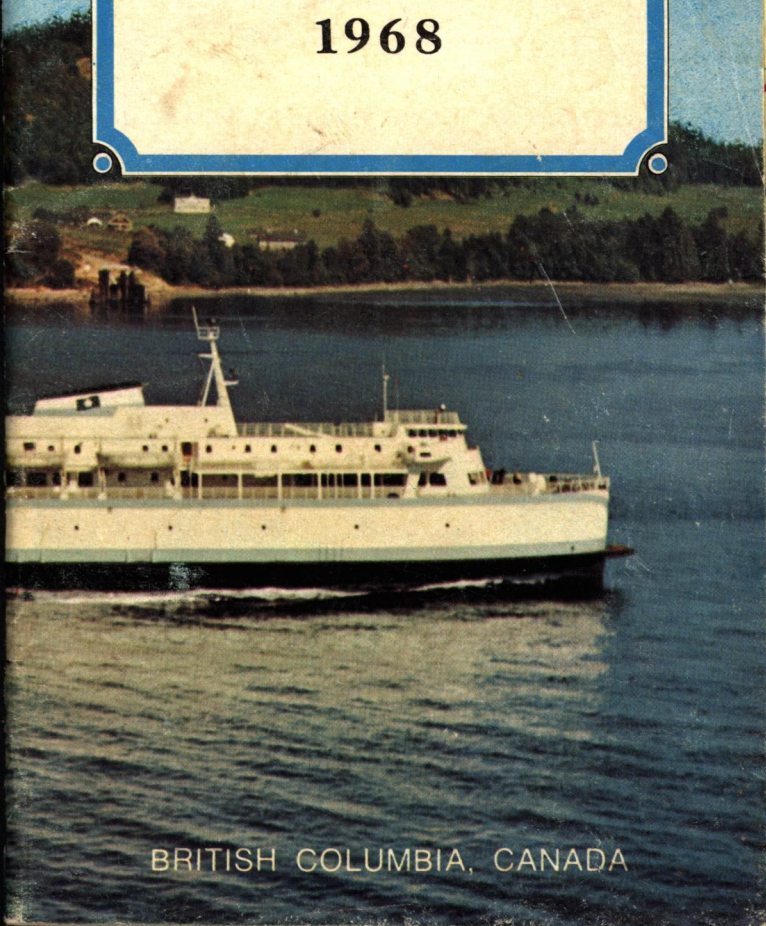


# VANCOUVER ISLAND



## VISITOR'S GUIDE

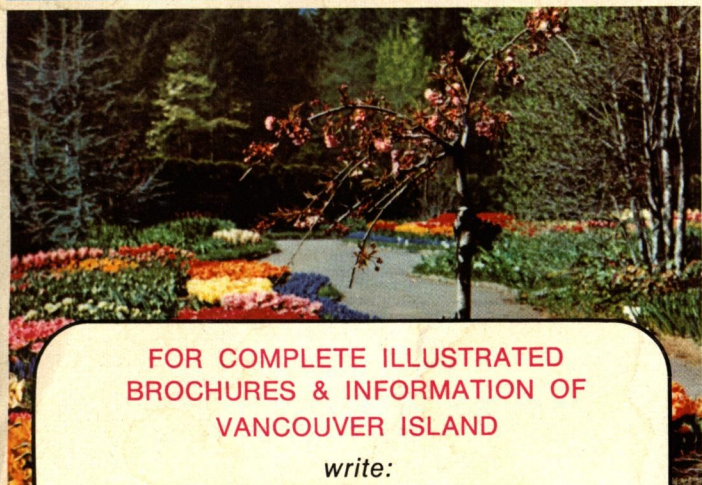
1968



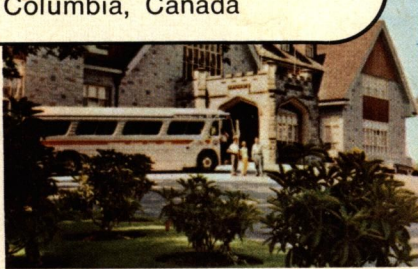
BRITISH COLUMBIA, CANADA



## A photograph of three swans in flight against a clear blue sky. The swans are white with long necks and large wings. They are flying from left to right, with the lead swan in the foreground and two others following behind it.



*write:*







## EXECUTIVE HOUSE

### VICTORIA'S FINEST

Enjoy the luxury of the Governors Suite on the 19th floor or one of a variety of rooms styled for the last word in travelling convenience.

Twenty stories of hospitality and comfort in Downtown Victoria.

Heated pool, radio and cable-vision T.V. Coffee house and the world's famous Hy's Steak House are yours to enjoy.

#### Rates from:

Single \$12.00 • Twin \$15.00

#### For Reservations:

Tel. 388-5111 • Telex 044-8195

## Antique Dealers in Antique Row

3 blocks in Fort Street

900 - 1000 - 1100

- |  |                  |
|--|------------------|
| Michael Cotton Antiques .....                | 946 Fort Street  |
| Vanhall's Antiques .....                     | 1023 Fort Street |
| The Golden Cameo - Antique Jewellery .....   | 1035 Fort Street |
| The Clock Shop - Wilf. Craven, G.R.I.T. .... | 1037 Fort Street |
| Old House Antiques - Ann Pearson .....       | 1040 Fort Street |
| Murdoch Galleries - Dorothy Wismer .....     | 1116 Fort Street |
| Branch: Lobby, Empress Hotel                 |                  |
| The Connoisseur's Shop - Faith Grant .....   | 1156 Fort Street |



Members of Victoria Antique Dealers Association.  
Buy with confidence.



## OAK BAY MARINA

### Fishing for Everyone

Group Party **Boat** M.V. Lakewood  
Charter **Boats** and Guides  
Rental **Boats** and Tackle

Only five minutes from  
Downtown Victoria at

1327 Beach Drive

386-3445

## GENERAL FISHING

Southern Vancouver Island is truly the "Utopia of the Pacific" for the salt water sports angler, with a wide variety of game fish including the mighty Chinook, King of salmon, or the fighting Coho, highly prized by sportsmen. Voracious ling cod, giant halibut, beautiful red snappers and hungry Pacific sharks lurk in nearby waters to test the angler's skill. Modern marinas located near Victoria offer a variety of fishing opportunities from the large comfortable party boats and efficient charter boats with experienced guides to the economy do-it-yourself rental boats. Rates from \$1.20 per hour including guide and bait make your fishing trip a must while you holiday on lower Vancouver Island.

Your catch will be frozen, smoked or canned and there is no fishing license required for salt water angling.



## PEDDER BAY MARINA

### Come to Salmon Country

RENTAL BOATS AND TACKLE  
3 CAR LAUNCHING RAMP

GUIDE SERVICE  
MODERN TRAILER PARK

11 miles west of Victoria

Pedder Bay

478-2268

## WHERE TO LOOK INDEX

Accommodation .....	19 to 24	Ferries .....	30, 32, 35 to 37
Antiques .....	4	Fishing .....	5
Attractions .....	7 to 9, 21, 22	Information .....	16
Border Crossing .....	12	Maps .....	3, 18 to 21, 37
Campbell River .....	33	Phone Numbers .....	16
Campsites .....	25	Photo Supplies .....	39
Car Rentals .....	37	Postage .....	12
Churches .....	25	Qualicum .....	31
Clubs .....	29	Shopping ..	13 to 15,
Courtenay .....	32		17, 19, 22 to 24
Customs .....	12	Sightseeing Tours .....	39
Duncan .....	30	Transport .....	36, 37
		Vancouver .....	34

EMERGENCY PHONE CALLS PAGE 16

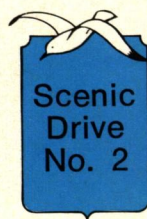


## VICTORIA SIGHTSEEING DRIVES

For  
Complete Information  
Enquire  
**Victoria Visitors Bureau**  
786 Government Street  
Phone 382-2127



Empress Hotel, Parliament Buildings, Centennial Fountain, Beacon Hill Park, Marine Drive, Victoria Golf Club, Oak Bay, English Residential Homes, Government House, Craigdarroch Castle, Arts Centre, Antique Row.



Inner Harbour, H.M.C.S. Naden, Drydock, English Village, Naval Dockyard, Saxe Point, Craigflower School and Manor House, Portage Inlet, Centennial Square, Trounce Alley, Bastion Square.

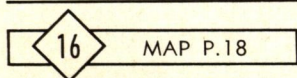


Victoria College, University of Victoria, Mount Tolmie Scenic Lookout, Mount Douglas Park and Scenic Lookout, Marine Drive, Cordova Bay, Saanich Peninsula, Butchart Gardens, Brentwood Ferry, Observatory.

Many Scenic Drives  
to choose from

ONE HOUR • ONE DAY • ONE WEEK

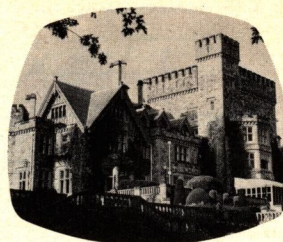
Also see page 39 for Conducted Sightseeing Tours



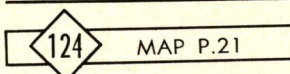
### HELMCKEN HOUSE HISTORICAL MUSEUM

"... nothing else ... save land, water, canoes and Indians" noted Dr. Helmcken in 1850 on first seeing the sight of his now world-famous home. See the original furnishings and possessions of a great pioneer of British Columbia. Open 10 a.m. to 5 p.m. (closed Mondays). Admission: Adults 25c, Children 10c.

638 Elliott Street, Victoria, B.C.



## VICTORIA SIGHTSEEING AND ATTRACTIONS



### FABLE COTTAGE

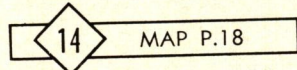
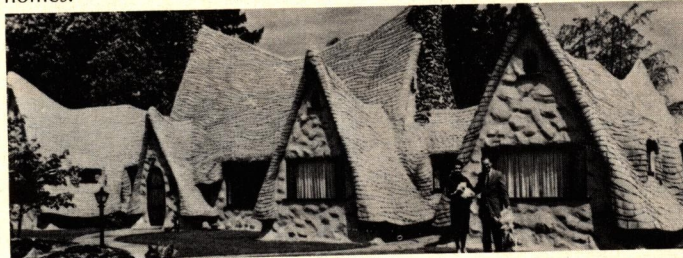
*Dream house hideaway becomes visitors delight!*

Take advantage of this rare opportunity to visit one of the world's most unusual homes.

OPEN DAILY 10 A.M. TO DUSK  
(Summer months only)  
Guides in attendance. 15 minutes  
from City Centre—just off Highway  
17.

(Yellow Dot Tour No. 3)

5187 Cordova Bay Road  
(Scenic Marine Drive), Victoria, B.C.

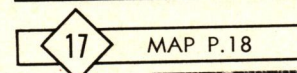


### BIG BAD JOHN'S TALLY-HO



The most unique, the most romantic sightseeing in North America — the leisurely horse-drawn Tallyhos. Trained announcers tell you the story of quaint Victoria on a complete grand city tour departing from Victoria's glorious harbour. The driver stops at the Strathcona Hotel's "Little Barkerville" at the end of the tour. See the historic B.C. gold rush picture gallery — it's free.

919 Douglas Street — 383-7137



H.M. QUEEN  
VICTORIA  
Photo of  
actual wax  
figure



The only Original Wax Museum in Victoria and B.C. that exhibits authentic Josephine Tussaud Wax Figures direct from London, England.

**A MUST in Victoria!**  
**See . . .**  
**MORE THAN 100**  
**JOSEPHINE TUSSAUD**  
**LIFE-SIZE WAX FIGURES**



- SEE — The Hall of Famous People
- SEE — The Regal Scene with Sir Winston Churchill
- SEE — The "Pieta" after Michelangelo
- SEE — The Enchanted Fairyland
- SEE — The Chamber of Horrors

Open Daily Including Sundays  
388-4461

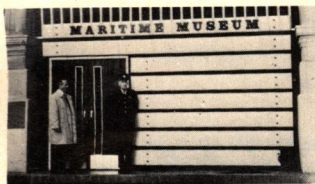
Directly across from the rear of the Empress Hotel in the beautiful ivy-covered Crystal Garden swimming pool building.



52

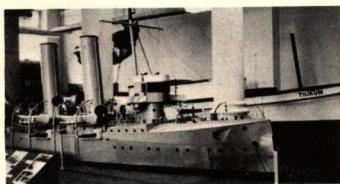
MAP P.18

## Maritime Museum of British Columbia



Bastion Square Victoria

OPEN DAILY

10 a.m. to 9 p.m. July- August  
10 a.m. to 5 p.m. other times

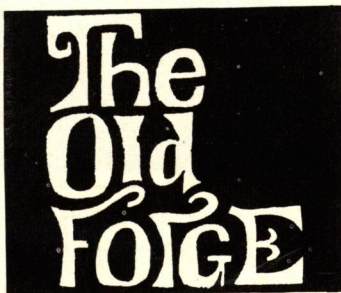
The West Coast's finest collection of maritime treasures.

The Navy lives on — alongside coastal and deep sea merchant shipping.  
Civic Parking Lot ticket validated

24

MAP P.18

One of Canada's largest and most beautiful night spots. Dancing nightly until 2 a.m. to the distinctive rhythms of the fabulous Foundry Brass. Floor shows 11 p.m. and 1:15 p.m. Monday to Friday, 10 p.m. and midnight on Saturdays.



Superb Food and Excellent Service

STRATHCONA HOTEL

919 Douglas Street — 383-9913 — Victoria

136

MAP P.20

A Must in Victoria, B.C.: The Fabulous Frontier  
"GHOST TOWN"

Sheriff's  
Office and  
Jail CellLive  
Barnyard  
Animals24  
Buildings  
and Scenes  
— 5,000  
Authentic  
Western  
Antiques

Only 7½ miles from Victoria City Centre. Thousands of world-wide visitors acclaim this early Western frontier village as being the cleanest, most beautiful, best-laid-out attraction ever seen anywhere. To see it is to believe in its authenticity. Come 6 miles out Hwy. No. 1 from Hwy. 17 at Town & Country Shopping Centre (watch for road directional signs on Hwy. 1 between Thetis Lake and Goldstream Parks).

Ample Parking 9 a.m. to Dusk Daily Admission Charge

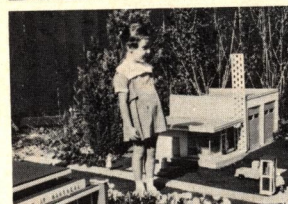
2329 Millstream Road, Victoria, B.C. - Phone 478-2292

LARGE FAMILY AND GROUP RATES

98

MAP P.18-20

## VICTORIA'S FAMOUS MODEL VILLAGE



Superb miniature landscaping. Over 50,000 living miniature trees and plants. Houses, stores, hotels, grist and lumber mills, school, ferry, farm, drill rigs, train, lakes, etc. to scale.

3 MINUTES DRIVE FROM  
CITY CENTREAdults and children love it  
Be sure to bring your camera

240 GORGE ROAD VICTORIA

Land of the Little People

94

MAP P.18

## Point Ellice House



OPEN 9 A.M. EVERY DAY  
2616 PLEASANT STREET  
(Just off Bay Street at Point  
Ellice Bridge)  
VICTORIA, B.C.  
Telephone 383-0632

Historical Point Ellice House with its charming old world atmosphere affords the visitor the opportunity to view many priceless treasures, to see the original rich furnishings just as they were when the Hon. Peter O'Reilly, one of the founders of British Columbia, lived here over 100 years ago.

Many of the founders of B.C. with their ladies enjoyed countless parties in the beautiful home and gardens lit up by coloured lights overlooking the waters of Victoria Arm.



120

MAP P.20

Visit



Phone 658-5311

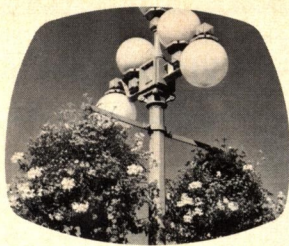
## WOODED WONDERLAND

One of Victoria's favourite family attractions. Over 60 fabulous fairytale characters come to life along the forest trail of this enchanting five-acre storyland. Meet the Three Bears; see live mice act out Hickory Dickory Dock; walk through the Crooked Man's House and swing on exciting Glide Ride—and don't miss it! Over 25 scenes in all.

Just 6 miles from Victoria on Hwy. 17 on the way to and from the B.C. and Anacortes Ferries.

Open Daily 9:30 a.m.-8:00 p.m.



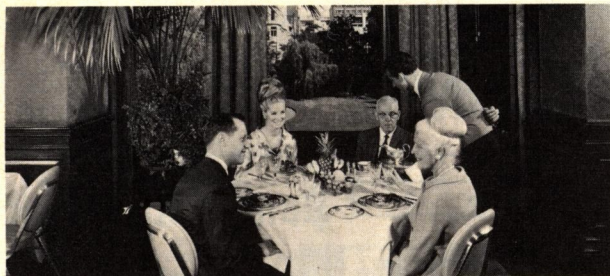


## VICTORIA DINING

21

MAP P.18

### THE EMPRESS DINING ROOM



The Empress Room is a "must" for dining at its best. You'll enjoy gracious surroundings, superb service and exceptionally fine food. Featured are such specialties as Prime Ribs of Choice Western Beef, fresh caught Spring Salmon, Sooke Shrimp. And when time is short, enjoy delicious meals at popular prices in the new and charming Garden Cafe.

89

MAP P.18

### MR. MIKE'S STEAK HOUSE

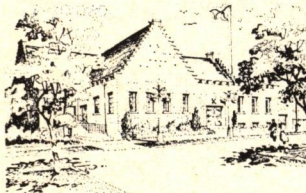


Mr. Mike's Steak House features char-broiled Sirloin Steaks at \$1.39, Filet Mignon at \$1.89 and Burger Steaks at 89c. Includes foil-wrapped baked Potato, Salad and hot French Bread. Rated "tops" by tourists. Attractive decor. Children welcome. Handy free parking. 1740 Douglas St. 385-1923

91

MAP P.18

### Hollywood House



Relax in the tastefully decorated TARTAN ROOM and enjoy fine cuisine at a price that will not ruin your appetite.

FEATURE: Steak dinners, Scottish Steak Pie, Haggis, Fresh West Coast Salmon. Daily 5 p.m. to 8 p.m. Smorgasbord Fri. and Sat., 5 to 8 p.m. Luncheon 12 to 2 p.m., Mon. through Fri.

Our FAMOUS "SUNDAY SMORGASBORD" in the "SIR WILLIAM WALLACE" room every Sunday from 5 to 8 p.m.

For reservations Phone 382-8833

2315 McBride Avenue  
Scottish Owned and Operated  
Two minutes' drive NORTH on Douglas St. from Centennial Sq.



71

MAP P.18



### S.S. Princess Mary

The ship-restaurant with the luxury liner menu

Patrons are served in the landlocked dining room and stern section of a steamer once the queen of the coast-wise fleet. Undoubtedly the most esteemed restaurant in Victoria, spectacular sea food dishes and thick steaks are the order for each day. So is the Captain's Breakfast, designed to brace food lovers for any kind of a storm. Patrons stroll through the adjacent marine garden to whet their appetites. Located at 344 Harbour Road, the restaurant is within view of Victoria's shipping scene.



Telephone 386-3456 for reservations.

140

MAP P.20

### MILLSTREAM RESTAURANT

Delicious Food, Homemade Pies and Soups

Relax and dine where people make the difference

AMPLE PARKING

Dining Room Coffee Bar

Open Daily 8 a.m. till 11 p.m.

Island Highway 747-9789 Cobble Hill



43

MAP P.18

### MAYFAIR RESTAURANT

- Moderate prices
- Courteous service
- Well prepared food
- Afternoon tea cup reading



1011 Broad St.



## BORDER CROSSING INFORMATION

### United States of America

Citizens or permanent residents of the United States can cross the United States-Canadian border either way without difficulty or delay. They do not require passports or visas. To assist officers of both nations to speed the crossing, however, native-born U.S. citizens should carry identifying papers establishing their citizenship. Naturalized citizens should carry documentary evidence of citizenship.

### Visitors planning re-entry into U.S.A.

It is of course the responsibility of the traveller to satisfy U.S. Immigration authorities of his right to re-enter the United States.

## CUSTOMS

**IMPORTANT TO U.S.A. RESIDENTS:** United States residents returning from Canada may take back, once every 31 days, merchandise for personal or household use to the value of \$100, free of United States duty and tax, providing they have remained in Canada 48 hours. The exemption will be based on the fair retail value of the articles acquired and goods must accompany the resident upon arrival in the United States. Members of a family household travelling together may combine their personal exemptions—thus a family of 5 could be entitled to a total exemption of \$500. Up to 100 cigars per person may be imported into the U.S. by U.S. residents, and also one quart of alcoholic beverages if the resident has attained the age of 21 years. If however the State laws of residence prohibits importation of any such goods United States Customs will not clear.

### Visiting Canada for less than 48 hours

Residents of the United States visiting Canada for less than 48 hours may take back for personal or household use merchandise to the fair retail value of \$10 free of United States duty and tax. One of the following may be included: 50 cigarettes, 10 cigars, one-half pound of manufactured tobacco, 4 ounces of alcoholic beverages, or 4 ounces of alcoholic perfume.

If any article brought is subject to duty or tax, or if the total value of all articles exceeds \$10, no article may be exempted from tax or duty.

Members of a family household are not permitted to combine the value of their purchases under this exemption.

### Suggestions

Re-entry to the United States can be simplified if you: list all your purchases before you reach the border, keep sales receipts and invoices handy and pack purchases separately for convenience of inspection.

## POSTAL RATES IN CANADA

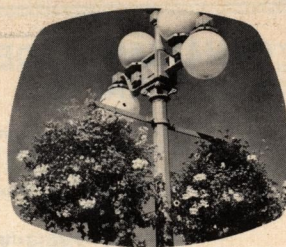
CANADIAN POSTAGE STAMPS MUST BE USED ON ALL MAIL POSTED IN CANADA.

**AIR MAIL . . .** 8c for the first ounce and 6c for each additional ounce or fraction thereof (to U.S.A., its territories and possessions).

**ORDINARY LETTERS . . .** 5c for the first ounce and 3c for each additional ounce or fraction thereof (to U.S.A., its territories and possessions).

**POST CARDS . . .** 4c (to U.S.A., its territories and possessions).

**PARCELS . . .** Parcels posted in Canada for delivery in the U.S.A., its territories and possessions, must have a customs declaration affixed. For parcel post rates apply at post office.



## VICTORIA SHOPPING

26

MAP P.18



Established 1929

## SIDNEY REYNOLDS

*the quality people*

VICTORIA, BRITISH COLUMBIA

FINE CHINA

801 Government St.

CRYSTAL

ANTIQUES

Phone 383-3931

27

MAP P.18



## Montague BRIDGMAN Ltd.

The Wedgwood Shop, Victoria

Feel free to browse at Bridgman's and enjoy one of the world's greatest selections of Wedgwood and Royal Doulton. Minton, Royal Worcester and Crown Staffordshire are among other famous English makes seen in great profusion at this long-established china and gift shop where you receive courteous and thoughtful assistance.

Importers of Fine English China

811 Government St.

Phone 383-0821



29

MAP P.18



GIFTS & SOUVENIRS

Souvenirs

Irish Belleek



English Bone China



Scottish Woollens



Tartan Yardage

English Toffee

## The Scotty House



901 Government St., Victoria,  
B.C. Phone 384-1722

30

MAP P.18



## INDIAN CRAFT SHOPPE

- ★ Indian Moccasins ★ Cowichan Sweaters
- ★ Totem Poles ★ Eskimo Carvings
- ★ Wooden Sculptured Figures from Quebec
- ★ Ivory Scrimshaw

INDIAN CRAFT SHOPPE

905 Government St. Phone 382-3643



38

MAP P.18



## CANADIAN MADE HANDICRAFTS

ESKIMO Carvings & Prints  
INDIAN Totem Poles, Masks & Moccasins  
LOCAL Wood Carvings, Pottery & Jewelry  
Paintings, Books, Cards, Woollens  
SOUVENIRS

At Worldwide Arts & Crafts Ltd.  
1023 Government at Fort Street

39

MAP P.18

THE  
BEEHIVE



## WOOL

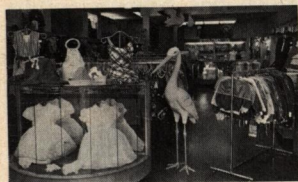
Knitting wool of every description from England, Scotland, France, Italy. Exclusive to the Beehive — MUNROSPUN of SCOTLAND, matching material and yarn kits and material by the yard. ENGLISH TEA COSIES. Est. 1906

Imported Knitting Wools & Materials

619 Fort Street Phone 383-9821

44

MAP P.18



## The Stork Shop

ENGLISH AND CANADIAN  
CHILDREN'S WEAR • WOOLENS TARTANS  
ENGLISH COATS

Infants to Fourteen Years

Victoria 665 Fort St. Phone 384-0618

84

MAP P.19



## COLLECTOR'S ITEMS

WHERE  
COLLECTORS  
MEET

STAMPS • COINS  
ANTIQUES  
COLLECTORS ITEMS  
Mail Business, Also  
Correspondence Welcomed  
1034 Fort St. Phone 385-4312  
Victoria, B.C.

41

MAP P.18



## ELSEA'S GIFT SHOP

English Bone China • Dresden and Hummel  
Figurines • Mason's Pink Vista, Hand Cut  
Lead Crystal, Beatrix Potter Figurines, Dres-  
den Love Story • Specializing in B.C. Jade,  
Handcrafted, also Rhodonite and other  
Gemstone Jewelry • Sterling Spoons • Anti-  
ques • World Wide Mailing

637 Fort Street Phone 385-1111 Victoria, B.C.

48

MAP P.18



## ANTIQUES QUALITY GIFTS

New English bone china cups and saucers,  
English Sheffield reproduction silver, Cana-  
dian copperware, Swedish and Venetian  
glass, costume jewellery. Our customers  
say the blending of the old and the new  
makes this "Victoria's most interesting  
shop."

1107 Government St., Victoria, B.C.  
Phone 383-2822

64

MAP P.18



## HENRY BIRKS & SONS LTD.

Canada's National Jewellers

706 Yates St. 382-4241 Victoria, B.C.

"You will enjoy a visit to Birks."  
Direct importers of FINE ENGLISH  
BONE CHINA, IRISH BELLEEK and  
WATERFORD CRYSTAL FROM IRE-  
LAND. Royal Doulton, Minton, Ayn-  
sley, Spode, Royal Crown Derby, Roy-  
al Worcester, and Wedgwood. Eng-  
lish Sheffield reproduction silver.  
Sterling silver holloware and flatware  
manufactured in our own Craft  
Shops.

FINE ENGLISH LEATHER



65

MAP P.18

## THE ENGLISH SWEET SHOP

The Sweetest Shop in Town

- Bottles of Old Fashioned British Candy
  - Importers of English Toffee
  - Souvenirs • China
  - Totem Poles
  - English Biscuits & Chocolates
- Our Friendly Little Shop is just Brimming  
Over

OPEN EVERY NIGHT

738 Yates Street Victoria, B.C.

69

MAP P.18



## COWICHAN TRADING CO.

British Columbia's  
Largest and Finest Selection

World Famous

Cowichan Indian Sweaters  
Authentic Eskimo Carvings  
Totem Poles • Indian Moccasins

1328 Government St., Victoria, B.C.  
Phone 383-0321

87

MAP P.18

DON'T FORGET TO VISIT

## THE MEXICAN GIFT SHOP



"Victoria's Most Interesting  
Gift Store"

Canada's Largest

Hand Tooled Purses, Wal-  
lets, Belts, Sterling Jewel-  
lery, Onyx, Baskets, Gifts  
of all kinds.

1702 Douglas St.  
Victoria, B.C.

Opposite Hudson Bay  
Phone 385-1118



## IMPORTANT PHONE NUMBERS

GREATER VICTORIA

### EMERGENCY CALLS

	VICTORIA CITY	OAK BAY	SAANICH	ESQUIMALT
<b>POLICE</b>	384-4111	384-0521	388-4321	385-1441
<b>DOCTOR</b>	383-1193	383-1193	383-1193	383-1193
<b>INHALATOR OR FIRE</b>	384-1122	386-3411	383-1166	385-1441

### HOSPITALS

Royal Jubilee Hospital, 1900 Fort St. .... 386-3131  
St. Joseph's Hospital, 841 Collison. .... 384-1131

### TOURIST INFORMATION

Victoria Visitors Bureau. .... 382-2127  
Vancouver Island Publicity Bureau. .... 382-3551  
British Columbia Government Travel Bureau. .... 382-6111

### TRANSPORTATION

Air Canada. .... 382-5141  
Vancouver Island Coach Lines. .... 385-4411  
British Columbia Ferries. .... 656-1194  
Canadian Pacific Steamships. .... 385-7771  
Black Ball Transport. .... 382-2202  
Washington State Ferries. .... 382-7254  
Mill Bay Brentwood Ferry. .... 382-7254  
Royal Blue Line Tours. .... 382-9261  
Gray Line Sightseeing. .... 385-4411  
Canadian Automobile Association. .... 382-8171  
British Columbia Area Code - 604



IAN B. MCCAUL  
Owner Manager

### VANCOUVER ISLAND VISITORS GUIDE

Published By  
VANCOUVER ISLAND  
TOURIST SERVICES

Visitors Guide is distributed free of charge throughout Canada and the Pacific Northwest United States, and can be obtained at your nearest Government, State or Chamber of Commerce Information Bureau, Travel Agency, Automobile Association, Hotel or Transportation Travel Counsellor, or write direct to:

### VANCOUVER ISLAND TOURIST SERVICES

P.O. Box 1084 Victoria  
British Columbia, Canada

Complete distributing and display service  
to the industry



### CENTENNIAL SQUARE VICTORIA

76

MAP P.18

McPHERSON'S

Seafood and Steak House



SUPERB FOOD  
GRACIOUS DINING  
LUNCHEONS  
TEAS - DINNERS  
388-4741

75

MAP P.18

The  
Book  
Nook

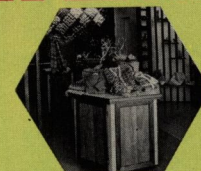


Specializing in Canadiana  
(Including Canadian Government Publications)  
• Children's Books • Quality Paperbacks • Book Plates  
Browsers Welcome  
10 Centennial Square, Victoria, B.C.  
Phone 386-0813

75

MAP P.18

Hand  
Loom

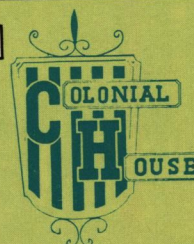


CANADIAN TWEED  
AND YARN  
CANADIAN HANDICRAFTS  
18 Centennial Sq., Victoria, B.C.  
Phone 384-1011

75

MAP P.18

INDIVIDUAL  
HAIR STYLING  
NO APPOINTMENT  
NECESSARY



Phone  
385-4405  
16 Centennial Sq.

Coiffures  
Ltd.

75

MAP P.18



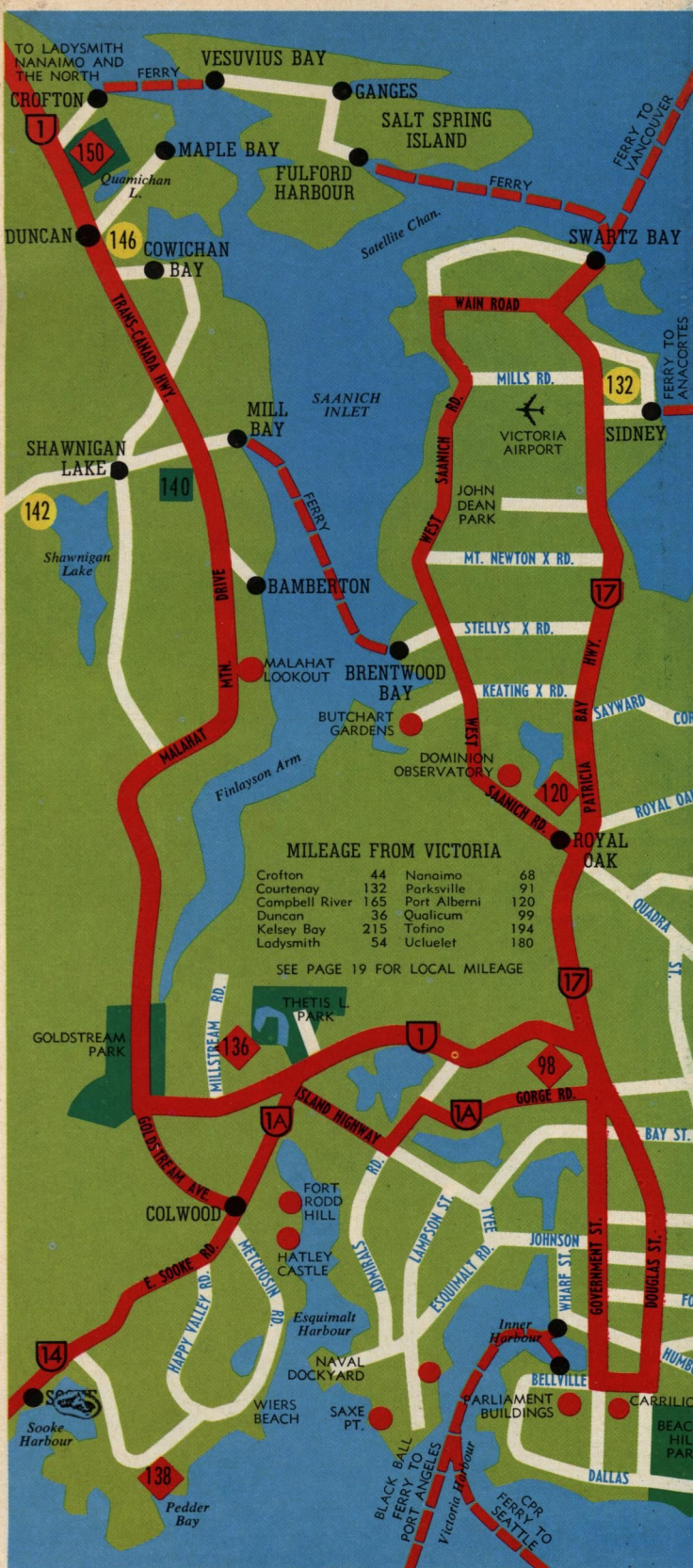
Impact's 'n' Imports

is unique but reasonably priced  
British Woollens - Bleyle Sportswear  
Loungewear by  
CANADIAN CLAIRE HADDAD  
1967 Coty Award Winner  
8 Centennial Square Victoria, B.C.  
Phone 388-7023









150 MAP P.20

## COME TO DUNCAN



Take the scenic drive to Duncan and enjoy the two mile ride through the woods and over the lake on a real old logging locie steam train. Stroll among acres of historic exhibits.

## COWICHAN FOREST MUSEUM

### GREATER VICTORIA AND SOUTHERN ISLAND ROUTE MAP

- Attractions
- Accommodation
- Dining
- Points of Interest



Map drawn by Ian B. McCaul for Vancouver Island Tourist Services. Not to be reproduced in any form without permission in writing. Copyright 1968.





## BASTION SQUARE VICTORIA

50

MAP P.18

## Village Fair

Be sure and visit the VILLAGE FAIR in Bastion Square. Victoria's only indoor shopping mall. For the finest in unique and unusual fashions and gifts imported from many parts of the world. The VILLAGE FAIR is unsurpassed. Shop and browse in these historical buildings once patronized by lusty gold miners and English remittance men.

53

MAP P.18



**COACH  
and  
FOUR**

STEAK HOUSE  
IN HISTORICAL BASTION SQUARE  
Reservations - 388-5832

52

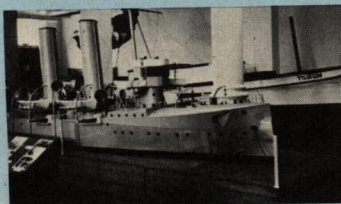
MAP P.18

## Maritime Museum of British Columbia

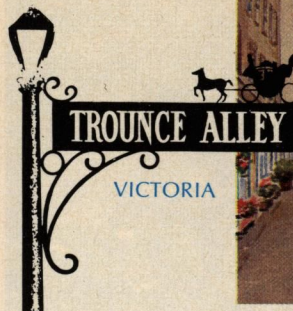


Bastion Square Victoria

OPEN DAILY  
10 a.m. to 9 p.m. July- August  
10 a.m. to 5 p.m. other times



The West Coast's finest collection of maritime treasures.  
The Navy lives on — alongside coastal and deep sea merchant shipping.  
Civic Parking Lot ticket validated



## THE HISTORY OF TROUNCE ALLEY

In 1858 the owner, a Mr. Southgate blocked access to View Street by placing a barrier at both ends of the alley. The public threatened to tear the barriers down. But history records they never did. Except for one day each year (a legal technicality) Trounce Alley has never been closed.

56

MAP P.18



Established  
1862

**W & J WILSON  
LIMITED**

1221 Gov't St. at Trounce Alley and in  
Empress Hotel, Madam & Eve Shop  
Trounce Alley

Victoria's Leading  
Clothing House

106 YEARS OF SERVICE TO DISCRIMINATING PEOPLE.  
Merchandise from the Fashion Capitals of the World. Noted for Best Quality at Reasonable Prices.

56

MAP P.18

## DAVIDSON'S House of Cards Ltd.

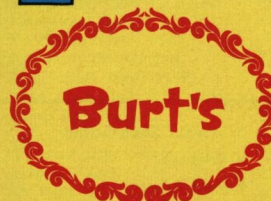
"Your Social Expression Centre"

• CARDS • GIFTWRAP • NOTES  
SERVIETTES PARTYGOODS CANDLES  
WEDDING INVITATIONS

618 View St and Trounce Alley  
385-9622 Victoria, B.C.

59

MAP P.18



## RESTAURANT CAVERN

in

Famous Historical Trounce Alley

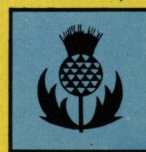
Homemade English Meat Pies  
Steak & Kidney  
Delicious Spaglette with Meat Sauce  
Tasty Fruit Pies Made on Our Premises  
Dine on Our Outside Patio

56

MAP P.18

**The  
SHIELING**  
SCOTTISH HERALDRY  
AND TARTANS

Ella Bailey



616 Trounce Alley

56

MAP P.18



SUITS  
COATS  
DRESSES  
SWEATERS  
HATS  
ACCESSORIES

## Toojays

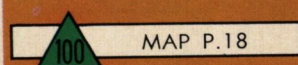
The most interesting shop  
For ladies from head to toe!

Trounce Alley 622 View St.





## MAYFAIR SHOPPING CENTRE VICTORIA



MAP P.18

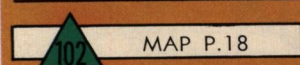
## Woodward's MAYFAIR

- Complete One-Stop Shopping.
- Ample Free Parking
- Evening Shopping Thurs. and Fri. 'til 9
- Phone 386-3322

- Mayfair Realty
- Mayfair Shoe Repair
- Mayfair Barbers
- Coin Op Laundry
- Coffee House
- Totem Travel
- Mayfair Pastries
- Grays Apparel
- Hobby Towne

M  
A  
Y  
F  
A  
I  
R

- Mayfair Shoe Salon
- Reitmans
- Fred Asher
- Peoples Credit Jewellers
- Owl Drugs
- Mayfair Flower Shop
- Can. Imp. Bank of Commerce
- Helen's Boutique
- Mayfair Service



MAP P.18



## MARGO BEAUTY SALON (in Mayfair Shopping Centre)

*Truly, one of Canada's outstanding  
Beauty Salons*

Appointments are preferred, and every  
effort will be made to serve you  
promptly

PLEASE PHONE  
388-4238



## PLACES OF WORSHIP VICTORIA

### ANGLICAN CHURCHES

#### CHRIST CHURCH CATHEDRAL

Rockland Ave. and Quadra St.

Services: 8:00, 9:30, 11:00 a.m.; 7:30 p.m.

#### ST. JOHN'S CHURCH

Quadra and Mason Sts.

Services: 8:00, 9:30, 11:00 a.m.; 7:30 p.m.

### UNITED CHURCHES

#### METROPOLITAN UNITED CHURCH

Quadra St. and Pandora Ave.

Services: 11:00 a.m.; 7:30 p.m.

#### FIRST UNITED CHURCH

Quadra and Balmoral Sts.

Services: 11:00 a.m.; 7:30 p.m.

### ROMAN CATHOLIC

#### SAINT ANDREW'S CATHEDRAL

Blanchard and View Sts.

Services: 6:30, 8:00, 9:30, 11:00 a.m.; 12:30, 5:15 p.m.

### PRESBYTERIAN

#### SAINT ANDREW'S CHURCH

Douglas and Broughton Sts.

Services: 11:00 a.m.; 7:30 p.m.

### BAPTIST

#### CENTRAL BAPTIST CHURCH

Pandora Ave

Services: 11:00 a.m.; 7:30 p.m.

Enquire for other denominations and faiths

## \* IMPORTANT

UNITED STATES VISITORS when in Canada  
be sure to use Canadian Postage Stamps  
See Postal Information Page 12

## BRITISH COLUMBIA GOVERNMENT CAMPSITES AND PARKS/VANCOUVER ISLAND

		36	Camp Sites
McDonald Park	Sidney	153	" "
Goldstream Park	Malahat	50	" "
Bamberton Park	Mill Bay	51	" "
Ivy Green Park	Ladysmith	(New)	" "
Rathrevor Beach Park	Parksville	100	" "
Englishman River Park	Parkville	100	" "
Little Qualicum Falls Park	Qualicum	200	" "
Stamp Falls Park	Port Alberni	40	" "
Sproat Lake Park	Port Alberni	89	" "
Wickaninnish Beach Park	Long Beach	182	" "
Miracle Beach Park	Courtenay	34	" "
Elk Falls Park	Campbell River	51	" "
Strathcona Park	Campbell River	23	" "
Morton Lake Park	Campbell River	15	" "
Mouat Park	Salt Spring Island		

## GOLF COURSES / GREATER VICTORIA

### PUBLIC COURSES:

Ardmore Golf Links	9 Holes	656-9087
Cedar Hill Golf Course	18 "	382-4993
Gorge Vale Golf Club	18 "	383-6451

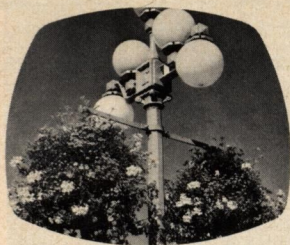
### SEMI PRIVATE COURSES:

Royal Colwood Golf Club	18 Holes	478-1551
Uplands Golf Club	18 "	383-2412
Glen Meadows Golf Club	18 "	656-3788

### PRIVATE COURSES:

Victoria Golf Club	18 Holes	383-6913
--------------------	----------	----------





## VICTORIA HOTELS — MOTELS

21 MAP P.18



## THE EMPRESS HOTEL



Beautifully situated in its own lovely gardens, Victoria's world famous Empress has recently been refurbished and fully modernized. "The Grand Dame of Pacific Coast Hotels" offers luxurious living at its finest . . . T.V./radio in every room, convenient ice and soft drink dispensers on every floor, gourmet dining in the famous Empress Room. Golfing, fishing, yachting within minutes of the hotel . . . reasonable rates . . . free parking for registered guests. Government Street, Victoria, B.C. - Phone 384-8111 - Telex 044-8121

6 7 MAP P.18



### BEL ISLE MOTEL

427 Belleville St., Phone 386-3451

50 units — some kitchens. Downtown location. Easy Parking. Elevator service. Courtesy Breakfast.

SWB \$10.50, DWB \$13, TWB \$14 - 15

The BEL ISLE & CREST MOTELS — Jointly owned — located side by side — will work to assist in placing of reservations & tour groups.  
Bel Isle Motel — J. Hepburn Mgr. Crest Motel — Lloyd Larson Mgr.



### CREST MOTEL

455 Belleville St.

80 units — some kitchens. Downtown location. Easy Parking. 60' enclosed pool. Dining lounge. Coffee Shop.

In season rates: SWB \$10, DWB \$13, TWB \$15. Winter rates available  
Phone 386-2421 - Telex: 044-8106

73

MAP P.18



## Hotel Douglas



APPROVED



1450 Douglas St. Victoria, B.C.

Located in the heart of the business and shopping district Adjacent to the New Centennial Civic Centre. TV for your enjoyment. Air-conditioned dining room, coffee shop. On request — Vancouver-Victoria Bus Service and Airport Limousine stops at entrance.

Phone 383-4157

104

MAP P.18



## SLUMBER LODGE MOTELS



*Inexpensive Luxury with Additional Features—*

Heated Pools - Sauna Baths - Recreation Rooms

Locations at - Victoria - Hope - Vernon - Kamloops - Cache Creek

Williams Lake - Prince George - Smithers - Terrace

Singles from \$8. Doubles from \$12.

Reservations at Your Nearest Slumber Lodge

682-6171

3110 Douglas St.  
Victoria, B.C.

23

MAP P.18



Barney's

HIDEAWAY

## Strathcona Hotel

Ideally situated for business, pleasure, or both. One hundred modern and reasonably priced rooms. Two supervised free parking lots, souvenir shop, steam bath. Two dining lounges—Barney's Hideaway and The Mahogany Room. Dancing nightly in The Old Forge Supper Club, featuring the Foundry Brass.



919 Douglas Street

Victoria, B.C.

Phone — 383-7137



92

MAP P.18



FULLY LICENSED  
DINING LOUNGE,  
COFFEE SHOP  
HEATED POOL  
& SAUNA

NOW  
COLOUR TV  
IN YOUR  
ROOM

2852 Douglas Street Phone 385-2441  
Telex 044-8210  
VICTORIA

15

MAP P.18



## THE Queen Victoria Inn

Overlooking Thunderbird and Beacon Hill  
Parks. Panoramic Views of Victoria Har-  
bour.

91 DE LUXE UNITS - FREE TV - RADIO  
BALCONIES - FREE PARKING

Two Heated Tiled Pools, Sauna, Espresso  
Coffee Bar, Lido Sun Terrace facing Thun-  
derbird Park; Covered Parking, Automatic  
Elevators, Optional Electric Kitchens, Tiled  
Baths and Showers. Tour and Guide Service.

Phone 386-1312

655 Douglas Street Victoria, B.C.

A Best Western Motel



Diners Club  
Carte Blanche  
American Express  
American Oil  
Phillips 66

106

MAP P.18



The Old Innkeeper  
KEN HOLE  
Welcomes you to  
Victoria's newest and  
finest Motor Hotel

## the RED LION MOTOR INN



COMPLETE FACILITIES: • 80 ROOMS • SAUNA  
• RESTAURANT • DINING ROOM  
• HEATED POOL  
AND

LATE NIGHT CABARET: SHOWS 9:30 & 12:30 A.M.

3366 Douglas St. - Victoria, B.C. - Phone 385-3366

132

MAP P.20



## CAA Victoria AAA AIRPORT TRAVELODGE

The Peninsular Motel of Distinction  
Ten Minutes Drive to World Famous  
Butchart Gardens

Heated Pool - T.V. - Restaurant  
Patricia Dining Lounge

Within Minutes Drive of Airport - Swartz  
Bay - Sidney Ferry - Fishing, Golf Course -  
Shopping

Rates from DL. 10.00 - TW 11.50

2280 Beacon Ave. 656-1176 Sidney, B.C.

4

MAP P.18



## SURF MOTOR HOTEL ON THE OCEAN

Quiet and restful, one-half mile south-west  
of Parliament Buildings.

Fourteen ocean-front view units, all with  
balconies, combination tiled baths, kitchen-  
ettes, room phones, elevator, television,  
clock radios, free parking - Rates two peo-  
ple \$12.00 to \$16.00. Room controlled heat.

290 Dallas Road, Victoria, B.C.  
Phone 386-3305

## VICTORIA CLUBS Meetings at the Empress Hotel

ROTARY CLUB: Thursday

GYRO CLUB: Monday

LIONS CLUB: Friday

KIWANIS CLUB: Tuesday

All Meetings at Noon

142

MAP P.20

## SHAWNIGAN INN

The "Resort Hotel" — on the Lake



The Home of the Shawnigan Country Club"

A 31 acre playground. Indoor Pools, Saunas, Twin Tennis Courts. 500 yd. Pitch  
& Putt Golf Course. Fabulous lake front activities. Warm water - finest swim-  
ming. The inn's own fleet of top racing sailboats, speed boat - launches - lake  
tours - riding - fishing: Salt water, lake & stream for steelhead. 5 minutes drive  
world famous Cowichan Bay for salmon. Children are a specialty with us.

Rates from: Blue Plan - \$20.00 each double per day.

Red Plan - \$12.00 each double per day

July & Aug. All American Plan - Children under 5 free  
30 minutes drive north of Victoria on Highway 1 turn left at Mill Bay

P.O. Box 40, Shawnigan Lake, B.C. 743-2312

97

MAP P.18



## REDWOOD PARK MOTEL

On Highway 1A in Beautiful  
Parkland setting. 36 units -  
Family Cottages - Heated Pool  
Launderette - TV - Kitchenettes.

A ten acre garden setting and  
only minutes drive to city centre

141 Gorge Phone 382-9171 Victoria, B.C.





## DUNCAN LADYSMITH

Tourist Information Centre  
Trans-Canada Highway, Duncan  
Phone 746-4232

146

MAP P.20



## SILVER BRIDGE INN

Duncan's leading motel within 200 yards of the famous Cowichan Fishing River. Heated Swimming Pool - Dining Lounge Dine in the Old English Dining Room, specializing in English Roast Beef and Yorkshire Pudding. 10 minutes to Cowichan Bay. Rates - Single \$7.00. Double - \$9.00.

140 Trans-Canada Highway

Duncan, B.C.

Phone 746-5151

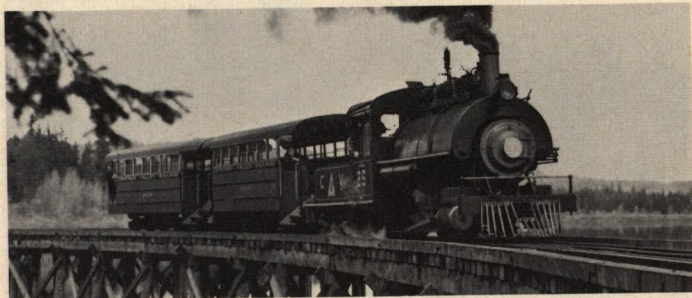
150

MAP P.20

## COWICHAN FOREST MUSEUM

One Mile North of Duncan on the Island Highway

Vancouver Island's foremost family attraction. Ride the Steam Train, see historic logging machines, and vehicles, stroll through forester's walk, browse through the log museum, relive the glory days of logging. This museum "Is destined to be one of the more important of its kind on the continent"—Museums Journal, London, England. Admission only \$1 - Half price ages 6-16.



## LADYSMITH • CROFTON

### FERRY SERVICE

#### Vesuvius - Crofton

Daily Except Sunday

Lv. Vesuvius	Lv. Crofton
7:00 a.m.	*7:30 a.m.

### Daily Including Sunday

8:00 a.m.	2:00 p.m.	8:30 a.m.	2:30 p.m.
9:00 a.m.	*3:00 p.m.	9:30 a.m.	3:30 p.m.
10:00 a.m.	4:00 p.m.	10:30 a.m.	4:30 p.m.
11:00 a.m.	5:00 p.m.	11:30 a.m.	5:30 p.m.
1:00 p.m.	6:00 p.m.	1:30 p.m.	6:30 p.m.

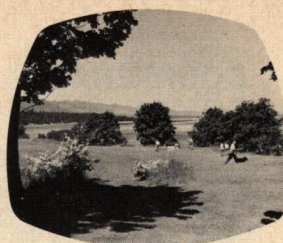


## HOLIDAY HOUSE MOTEL

All Units Feature Private Patio  
Overlooking the magnificent view of Ladysmith Harbour, only 30 minutes to Nanaimo Ferries.

Sixteen modern units - TV - Salt water Beach - Fishing and Golf nearby

Rates from \$12.00 to \$14.00 double  
Island Highway 245-2231 Ladysmith, B.C.



## QUALICUM BEACH

Tourist Information Centre  
Trans Canada Hwy.,  
Qualicum Beach  
Phone 752-9532

## QUALICUM BEACH INN

Open All Year

Qualicum Beach "the beauty spot of Vancouver Island" on sunny east coast. A perfect setting overlooking the sporty 9 hole golf course and the Strait of Georgia. Main Lodge and Annex Cottages - Deluxe suites with fireplaces - Dining Room - Heated Pool - Tennis - Fishing - Sightseeing. Tar-rif May 15 - Sept. 15 - American Plan dinner & breakfast - Twins from \$27.00. Suites from \$32.00.



P.O. Box 99

Phone 752-9211

Qualicum Beach, B.C.

## CAMERON COURT MOTEL

Right on  
The Beach



Small attractive motel overlooking Georgia Strait - Fully Furnished motel units for 1 to 4 persons - Free TV and kitchens included. Warm salt water swimming - salmon fishing, clams, oysters, also winter steelhead fishing. Rates - June 15 to Sept. 15 from \$10.00 - off season - \$7.00.

Qualicum Beach V.I., B.C. Phone 752-9314

## BUENA VISTA MOTEL

The Motel On The Seashore  
Open All Year

Deluxe one and two-bedroom fully equipped housekeeping suites all have large windows overlooking lawn and

seashore offering complete privacy and quiet. Warm water swimming - golf course nearby - Salmon fishing at its best. Daily, weekly, off-season rates and brochure on request. Advance reservation advisable.







## COURTENAY COMOX

Tourist Information Centre  
Island Highway, Courtenay  
Phone 334-3234 or 334-2451

## SLEEPY HOLLOW MOTEL

Your Host

Al & June Seymour

Downtown in the heart of the Comox Valley. 50 Deluxe units - TV - Indoor Pool - Kitchenettes.

Breakfast COFFEE SHOP Lunches

Three blocks to shopping centre

Fishing - Hunting - Golf - Tennis Nearby

Rates from Dl. \$9.00 Tw. \$10.00 Tri. \$11.00 Dd. \$12.00

1190 Island Highway - Phone 334-4476 - Courtenay, B.C.



**PV**

*Pacific Village Motel*

R.R. 1, Fanny Bay, British Columbia

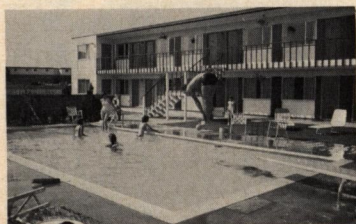
Make the PACIFIC VILLAGE MOTEL your headquarters and spend the day visiting Campbell River, Kelsey Bay or drive into Gold River and see B.C.'s First Instant Town. Visit the beautiful islands of Denman and Hornby. See one of Canada's largest air bases or drive into Cumberland and dig in the ruins of old Chinatown. Or just simply relax by the sea in one of our beautifully furnished all electric cottages and enjoy fine home cooked meals in our dining lounge or coffee shop. To add to your enjoyment a fully equipped Marina complete with boats and concrete launching ramp is available. Salmon fishing, swimming and oysters galore.

Phone 335-2333

## FERRY SCHEDULE

### M.V. "Comox Queen" Comox - Powell River

COMOX	POWELL RIVER	Extra Sailings
(Leave daily)	(Leave daily)	7:00 p.m. 9:00 p.m.
7:00 a.m.	9:00 a.m.	(June 23 to September 4, inclusive;
11:00 a.m.	1:00 p.m.	also on holiday week-ends.)
3:00 p.m.	5:00 p.m.	Crossing time: 1 hour 40 minutes.



## ANCO MOTEL

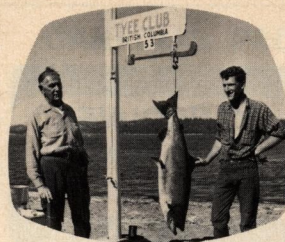
A "CANADIANA" MOTEL

CAA - AAA Approved

Situated on Island Highway  
28 Modern Units - Heated Swimming Pool

Cable Television - Telephones  
Coffee Shop

P.O. Box 1381 Courtenay  
Phone 334-2451 Telex 044-718



## CAMPBELL RIVER

Tourist Information Centre  
Tyee Plaza, Campbell River  
Phone 287-6261



## HAIDA INN

The Luxury Spot of  
Campbell River

- 80 Rooms
- Tanoo Dining Room
- Raven Coffee House
- Phone 287-7402
- TV and Radio
- Fishing H.Q.
- Guides, Boats
- Cabaret Dancing

"You Don't Take a Sandwich to a Banquet"  
Visiting Campbell River don't bring a fish  
Just Make Sure of Your Reservation at

THE HAIDA



## ELK FALLS MOTEL

On The Campbell River

Large spacious park-like grounds, excellent year round fishing for salmon, trout and steelhead. Registered Big Game Guide — Grizzly Bear, Mountain Goat, Elk, Deer. Boats, motors, fishing guides on request. Comfortable complete housekeeping units. Cablevision.

Your Hosts Denis and Rita King

RR 2, Campbell River, B.C. Ph. 287-6796



## QUADRA ISLAND FERRY SERVICE

"QUADRA QUEEN"

### LEAVE CAMPBELL RIVER:

A.M.: 7:30, 8:45, 10:15, 11:15

P.M.: 12:15, 1:15, 2:15, 3:45, 5:00, 6:00, 7:30, 9:30, 10:30

### LEAVE QUATHIASKI COVE:

A.M.: 7:00, 8:15, 9:15, 10:45, 11:45

P.M.: 1:45, 3:15, 4:15, 5:30, 7:00, 9:00, 11:00

## NOOTKA SOUND MARINE SERVICE

GOLD RIVER • TAHSIS • ZEBALLOS

Sunday	Leaves	5:00	Arrives	9:30	Arrives	11:45
Wednesday	Gold River	P.M.	Tahsis	P.M.	Zeballos	P.M.
Friday						

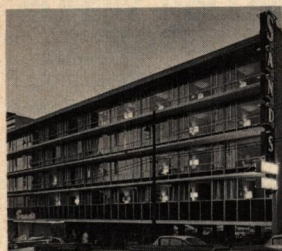
### Direct Bus Service Campbell River-Gold River

Tuesday	Leaves	7:00	Arrives	8:30	Arrives	12:30
Thursday	Zeballos	A.M.	Tahsis	A.M.	Gold River	P.M.
Saturday						





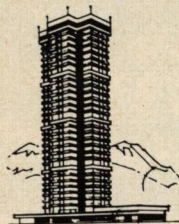
## VANCOUVER



### *The Sands* MOTOR HOTEL

Phone 682-1831 Telex 04-5359

On English Bay at Stanley Park  
Vancouver's Most Exciting Motor Hotel  
Every Room Has a View  
Close to Downtown Shopping  
Rates from Single \$9.50, Double \$13.00 & Up  
1755 Davie Street Vancouver, B.C.



Vancouver's  
Address  
of Distinction

## Blue Horizon

Vancouver's newest Downtown Hotel, centrally located,  
free parking, individual refrigerators. Rates from: Sgl.  
\$10.00 - Dbl. \$13.00 - Twn \$14.00

DINING—Enjoy fine cuisine with an unsurpassed view  
from 32 storeys above Vancouver. Excellent service in  
elegant surroundings awaits you for a pleasant lunch or  
leisurely evening dining.

1225 Robson Street Phone 688-1411 Vancouver, B.C.



### BLUE BOY MOTOR HOTEL

Located on Main  
Entrance to  
Downtown Vancouver

Our excellent accommodation offers you a maximum of casual comfort. Dine in  
an atmosphere of informal elegance in the Regency Room. Heated swimming  
pool - undercover parking.

Rates from Single \$9.00, Double \$12.00, Twin \$13.00

725 S.E. Marine Drive Phone 321-6611 Vancouver, B.C.



### Pillars Inn Resort Motel

Minutes from Victoria Ferry, first light turn right. 25 minutes  
from Vancouver. Victoria Ferry Exit from U.S. border on 499  
North.

HEATED POOLS - KITCHENETTES  
ELEGANT UNITS - LUXURY SUITES  
DINING AND DANCING

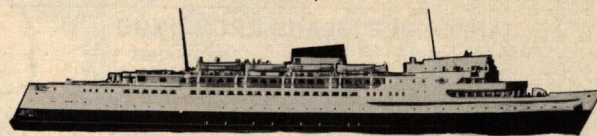
Patio French Quarter and Dining Lounge

1700 - 56th Street 943-2214 Ladner, B.C.

## CANADIAN PACIFIC STEAMSHIPS

DIRECT SERVICE

**Victoria - Seattle — Victoria - Port Angeles  
Nanaimo - Vancouver**



VICTORIA/SEATTLE—(May 10 - Sept. 28, 1968)

Lv. Victoria .....	5:30 p.m.	Ar. Seattle .....	9:30 p.m.
Lv. Seattle .....	8:30 a.m.	Ar. Victoria .....	12:30 p.m.

VICTORIA/PORT ANGELES—(June 21 - Sept. 2, 1968)

Lv. Victoria .....	1:30 p.m.	Ar. Port Angeles .....	2:45 p.m.
		Ar. Victoria .....	4:30 p.m.

NANAIMO/VANCOUVER

Lv. Nanaimo .....	6:00 a.m., 2:00 p.m., 10:00 p.m.
Ar. Vancouver .....	8:45 a.m., 4:45 p.m., 12:45 a.m.
Lv. Vancouver .....	2:00 a.m., 10:00 a.m., 6:00 p.m.
Ar. Nanaimo .....	4:45 a.m., 12:45 p.m., 8:45 p.m.

All Times Local - Daily Sailings

TRAVEL  
*Canadian Pacific*

TRAINS / TRUCKS / SHIPS / PLANES / HOTELS / TELECOMMUNICATIONS  
WORLD'S MOST COMPLETE TRANSPORTATION SYSTEM

### MILL BAY - BRENTWOOD Ferry Schedule

Leaves BRENTWOOD	Leaves MILL BAY
every hour on the half-hour	every hour on the hour
7:30 a.m. to 6:30 p.m.	8 a.m. to 7 p.m.
SUNDAYS AND HOLIDAYS	SUNDAYS AND HOLIDAYS
7:30 a.m. to 8:30 p.m.	8 a.m. to 9 p.m.

### Black Ball Transport, Inc. PORT ANGELES - VICTORIA



SUMMER SCHEDULE

June 1 through September 15  
Washington State Local Time

Lv. Victoria, B.C.	Lv. Port Angeles
6:00 A.M. (Note 1)	8:00 A.M.
10:15 A.M.	12:15 P.M.
2:30 P.M.	4:30 P.M.
6:30 P.M.	8:30 P.M. (Note 2)
Note 1. This trip does not operate Thursdays.	
Note 2. This trip does not operate Wednesdays.	

FALL, WINTER AND SPRING  
SCHEDULE

September 16 through May 31  
Washington State Local Time

Lv. Victoria, B.C.
9:00 A.M. *
1:00 P.M.
Lv. Port Angeles
7:00 A.M. *
11:00 A.M.

\*This trip does not operate on  
Sundays until Easter Sunday.  
Subject to Change Without Notice





## B.C. FERRIES SERVICE

One of the most pleasant memories of your visit to British Columbia will be your trip on a fast, modern B.C. Ferries "Queen". The scenic waters, the bracing sea air, the dependable departures and quick, comfortable crossings make your miniature ocean cruise a rare pleasure indeed. On board is a newsstand, coffee bar, and restaurant.

### VANCOUVER ISLAND CROSSINGS

Vancouver to <b>VICTORIA</b> via Tsawwassen and Swartz Bay	Vancouver to <b>NANAIMO</b> via Horseshoe Bay and Departure Bay
---	--

Crossing time 1 hr., 40 min. Crossing time 1 hr., 50 min.

### FREQUENT SAILINGS DAILY

Summer: Hourly sailings 7 am - 10 pm  
Winter: Every 2 hours 7 am to 9 pm, additional sailings during peak traffic periods

### VANCOUVER TO SUNSHINE COAST

#### FREQUENT SAILINGS

Via Horseshoe Bay and Langdale

Crossing time ¾ hour

Connections with Powell River via Jervis Inlet Ferry

**NO RESERVATIONS REQUIRED**

### VANCOUVER TO GULF ISLANDS

(via Tsawwassen and Long Harbour)

Check B.C. Ferries for all schedules and connecting inter-island ferries.

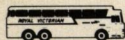
**CAR RESERVATIONS REQUIRED**



### "DRIVE" THE INSIDE PASSAGE TO PRINCE RUPERT

The newest ferry liner cruise in North America — 330 miles from Kelsey Bay on northern Vancouver Island to Prince Rupert, aboard the MV "Queen of Prince Rupert". Sailings every other day from each terminus during summer — two sailings weekly in winter. A rewarding trip in itself, or part of a circle tour of British Columbia by car or motor coach. (P.O. Box 1388, Victoria, B.C.)

**CAR AND STATEROOM RESERVATIONS RECOMMENDED**



### MOTOR COACH SERVICES

*Inside Passage:* Express coaches leave Victoria and Vancouver for same-day connections at Kelsey Bay with all north and southbound sailings of the "Queen of Prince Rupert".

*Gulf of Georgia Crossings.* "Royal Victorian" (between Vancouver and Victoria), \$4.25 each way and "Royal Islander" (Vancouver and Nanaimo), \$2.95 each way offer deluxe downtown to downtown motor coach service on regular schedules.

*Vancouver Island.* All major Island communities are served by Vancouver Island Coach Lines on daily scheduled runs. Drive the "Georgian Triangle" (Victoria-Nanaimo-Vancouver) round trip fare only \$10.00.

*Gulf Island Day Trips:* Morning and afternoon services connect with Gulf Islands ferries from Victoria and Vancouver.



### COACH LINES

Phone: Victoria — 385-4417

Vancouver (Pacific Stage Lines) — 683-2421



## THE GULF ISLANDS

A 'must' on your visit to Vancouver Island is a side-trip into the beautiful Gulf Islands. Cruising the sparkling waterways the verdant islands look the same but go ashore and you'll find each has a special charm of its own.

From Swartz Bay or Crofton on Vancouver Island you can cross via B.C. Ferries to Saltspring Island, largest of the group with its scenic drives and provincial parks. Another ferry from Swartz Bay stops at the picturesque Pender Islands, pastoral Mayne and Saturna, famous for its lamb barbecue. Montague Harbour on Galiano is one of the prettiest in the islands.

An afternoon cruise of the Gulf Islands (2:30 to 6:55 p.m.) is an outstanding value for only \$2.00 round trip from Swartz Bay, half an hour from Victoria. Inter-island connections can also be made to and from the mainland (Tsawwassen).

COAST TO COAST  
CANADA AND  
INTERNATIONAL



Free Pick Up & Delivery  
All Major Travel  
Cards Accepted



VICTORIA:

843 Douglas St. 388-5525

VANCOUVER

1058 Alberni St. 685-0536

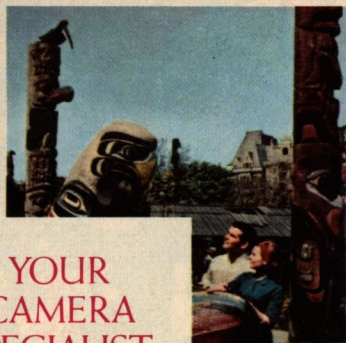
NANAIMO:

110 Nicol St. 754-9322

CAMPBELL RIVER:

Tyee Plaza Centre 287-7878





**YOUR  
CAMERA  
SPECIALIST**

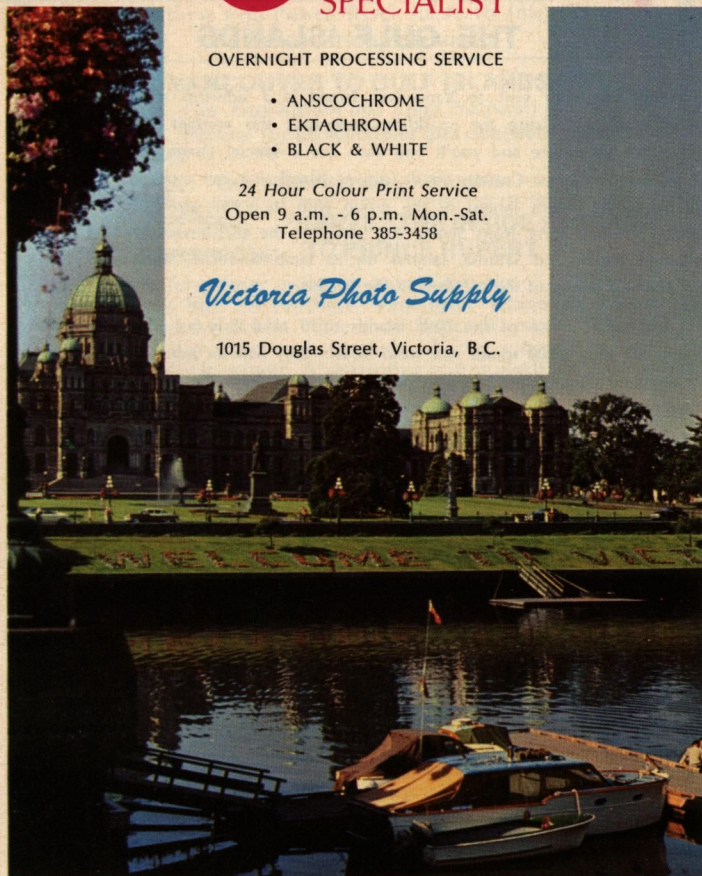
OVERNIGHT PROCESSING SERVICE

- ANSCOCHROME
- EKTACHROME
- BLACK & WHITE

24 Hour Colour Print Service  
Open 9 a.m. - 6 p.m. Mon.-Sat.  
Telephone 385-3458

*Victoria Photo Supply*

1015 Douglas Street, Victoria, B.C.



Published By

*Vancouver Island Tourist Services*



20

MAP P.18

Enjoy seeing WORLD FAMOUS



**BUTCHART GARDENS**

with

ROYAL BLUE LINE - GRAY LINE TOURS



Beautiful Ross Fountain

Tours on frequent schedules daily to Butchart Gardens, city & residential drives undersea gardens, English village. Tours leave from front of Empress Hotel Government St. Free parking, or pickup at your hotel or motel.

Phone 382-9261 or 385-4411





## BRITISH COLUMBIA FERRIES

The British Columbia Ferry Authority operates a fleet of twenty-one fast, modern ships along the inside waterways of British Columbia. From Tsawwassen terminal 20 miles south of Vancouver and 23 miles north of the international boundary there are frequent daily sailings by large ships to Victoria on Vancouver Island. From Horseshoe Bay terminal in West Vancouver there are similar services to Nanaimo in central Vancouver Island and crossing Howe Sound and Jervis Inlet along 92 miles of Sunshine Coast Highway. The Gulf Islands are served by regular daily service from both the mainland (Tsawwassen) and Vancouver Island terminals.

The M.V. "Queen of Prince Rupert", flagship of the fleet, plies the "Inside Passage" between Kelsey Bay on Vancouver Island and Prince Rupert on the northern mainland. For further details see inside page 44.

