

# Yakima Project Kennewick Division Washington

## KENNEWICK IRRIGATION DISTRICT

Orvel L. Terril, President  
Walter Crayne, Member  
W. A. Sloan, Member

Board of Directors  
Board of Directors  
Board of Directors

## KENNEWICK PROJECT COMMITTEE

Jay Perry, Chairman  
J. Carroll Pratt, Sec.-Treas.  
Frank Lampson, Member  
C. F. Fletcher, "  
C. C. O'Bannon, "  
William Dunn, "  
Frank Boies, "

Edward Brand, Member  
Charles Powell, "  
Walter Crayne, "  
W. A. Sloan, "  
Jerome Clark, "  
J. A. Baldwin, "  
Charles Rohrmann, "

E. C. Tweet, Member

## BUREAU OF RECLAMATION

F. A. Seaton  
W. A. Dexheimer  
L. N. McClellan

Secretary of the Interior  
Commissioner of Reclamation  
Asst. Commissioner and Chief  
Engineer  
Regional Director  
Superintendent, Yakima Project  
Construction Engineer

H. T. Nelson  
O. W. Lindgren  
W. L. Karrer

## MAJOR CONSTRUCTION CONTRACTORS

Chandler Power and Pumping Plant  
Completion Contract

Turbines  
Pumps  
Generators  
Governors

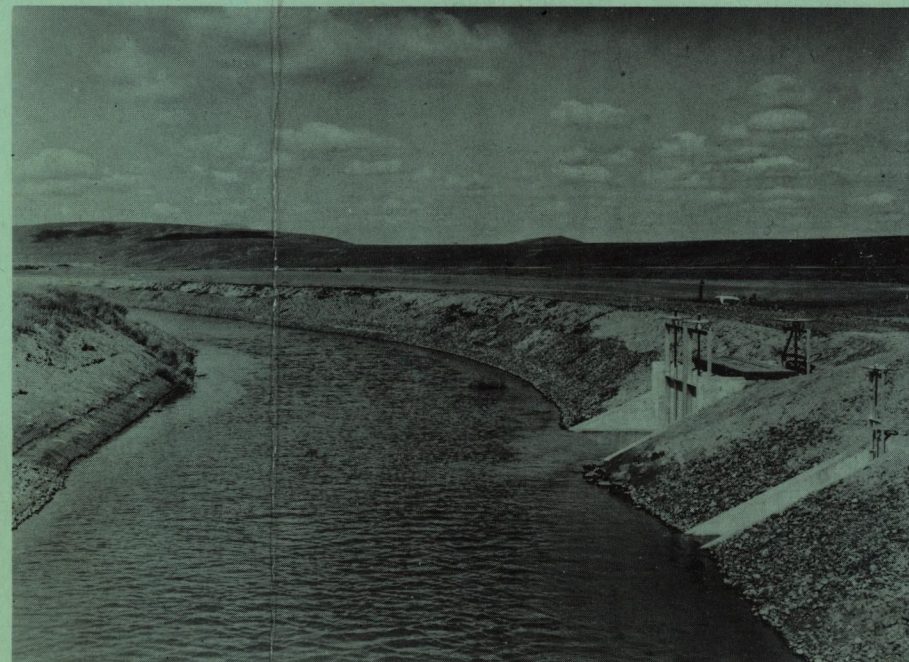
A. J. Cheff Construction Co.  
Western Electrical Construction  
Co.  
The James Leffel Co.  
Worthington Corporation  
Electric Machinery Mfg. Co.  
Pelton Water Wheel Co.

Prosser Diversion Dam

Paul Jarvis, Inc.

Canals and Laterals

J. A. Terteling Co.  
A. J. Cheff Construction Co.  
Lewis Hopkins Co.  
Otis Williams and Co.  
Murphy Bros. Construction Co.  
Osberg Construction Co.  
Cherf Bros. Inc., & Sandkay  
Contractors, Inc.  
Erwen Construction Co.



## First Water Delivery Ceremonies

April 26, 1957

Sponsored By  
Kennewick Project Committee  
and  
Kennewick Irrigation District

## YAKIMA PROJECT, KENNEWICK DIVISION

The Kennewick Division is located in Benton County, Washington, and extends from Prosser to Hover, a distance of 52 miles. This is the last of the six divisions of the Yakima Project.

Irrigation in the Lower Yakima Valley dates back to 1892. In that year, construction was started on the Kennewick Canal, a development which grew into the present Columbia Irrigation District.

The Northern Pacific Irrigation Company reconstructed the Kennewick Canal in 1905, and installed pumps to pump from the canal to supply irrigation water to the Kennewick Highlands. By 1918, about 2,700 acres had been put under irrigation.

In 1919 the Kennewick Irrigation District was organized, and an unsuccessful attempt was made to secure funds for construction. Again in 1921, an unsuccessful effort was made to obtain funds, but it was found necessary for the District to procure the Prosser Diversion Dam, its water rights, and canal right-of-way before the Bureau of Reclamation could undertake construction. These rights were purchased through a bond issue by the District.

By 1930 it became evident the Highlands system would require rehabilitation. The District entered into a contract with the Bureau of Reclamation which called for the Bureau to purchase the dam and water rights at Prosser, and canal right-of-way from the District, to reconstruct the pumping plant, and also to construct 2.5 miles of canal and a powerplant at Prosser Dam.

In 1946, a feasibility report was prepared by the Bureau of Reclamation for the development of the present Kennewick Division, and construction of this Division was authorized by Congress on June 12, 1948. An Amendatory Repayment contract was signed by the District in 1952, and the first construction started in 1953.

The Kennewick Division provides irrigation to 14,500 irrigable acres of new lands, and 4,650 acres of old lands in the presently irrigated area. The new land will eventually be developed into over 225 new farm units. The Chandler Powerplant has an installed capacity of 12,000 kilowatts. The average annual output for the Chandler Powerplant is estimated at 70,120,000 kilowatt-hours. The 1,500 c.f.s. Chandler Canal carries water from the Prosser Diversion Dam to the Chandler Power and Pumping Plant, a distance of 10.6 miles. Two direct connected pump-turbine units, utilizing 118 feet of fall, pump irrigation water under and across the Yakima River in a 99" conduit, lifting it 102 feet above the Powerplant forebay, and delivering it to the Main Irrigation Canal. The 42 mile Main Irrigation Canal, and approximately 60 miles of laterals, will distribute the water to new lands. Water will be delivered into the existing distribution system of the presently irrigated lands. Capacity has been built into the system to permit eventual irrigation of approximately 6,500 acres of additional land near the village of Kiona.

## FIRST WATER DELIVERY CEREMONIES

April 26, 1957

### Morning Program - 10:00 a.m.

at  
Don A. Creswell Farm-Desert Land Entry

#### Introductory Remarks

Mr. Orvel L. Terril, Chairman, Kennewick Irrigation District & Chairman of Ceremonies

#### Master of Ceremonies

Mr. E. J. Brand, Retired Kennewick Irrigation District Manager

#### Introductions Speakers

Mr. Jay Perry, Chairman Project Committee  
Mr. W. L. Karrer, Construction Engineer  
Mr. Harold T. Nelson, Regional Director, Bureau of Reclamation  
Mr. Don A. Creswell, Farmer & President of Franklin County Irrigation District  
Hon. Henry M. Jackson, U. S. Senate



### Luncheon Program - 12:00 Noon

(Kennewick Social Club)

Mrs. J. C. Pratt, Sr.  
Mrs. Orvel Terril

Hostess Chairman  
Co-Chairman

#### Invocation Presiding

Reverend Kenneth Underwood  
Mr. Manley Corderman, Jr., President, Kennewick Chamber of Commerce

#### Entertainment

U.S.O.

#### Introductions Speakers

Mr. Harold T. Nelson, Bureau of Reclamation  
Hon. Henry M. Jackson, U. S. Senate  
Hon. Warren G. Magnuson, U. S. Senate