

## FOREWORD

At the request of the 1964 City Chamber of Commerce and its various civic leaders, the Public Utility District of Grant County prepared the attached report on the agricultural status and economic development of Royal Slope from the latest data available. For the purpose of this report, the report covers increases and yields of crops grown on the Slope in 1964; however, it also reveals the progress and growth experienced during the previous two years on the Slope.

We trust this information will be of value to the Royal City Chamber of Commerce in pursuance of their objective to better the economic status of Royal Slope.

This report was prepared by Douglas F. Burk for the Public Utility District of Grant County, Ephrata, Washington.

Axel E. Strom  
Director of Utilization

Public Utility District  
of Grant County

August 1965

Public Utility District of Grant County  
Ephrata, Washington

August 1965



## FOREWORD

At the request of the Royal City Chamber of Commerce and its various civic leaders, the Public Utility District of Grant County prepared the attached report on the agricultural status and economic development of Royal Slope from the latest data available. For the most part, this report covers the acreages and yields of crops grown on the Slope in 1964; however, it also reveals the progress and growth experienced during the previous two years on the Slope.

We trust this information will be of value to the Royal City Chamber of Commerce in pursuance of their objective to better the economic status of Royal Slope.

This report was prepared by Douglas F. Burk for the Public Utility District of Grant County, Ephrata, Washington.

Axel E. Strom  
Director of Utilization

Public Utility District  
of Grant County

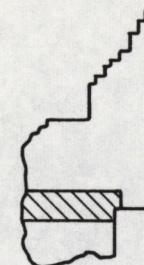
August 1965



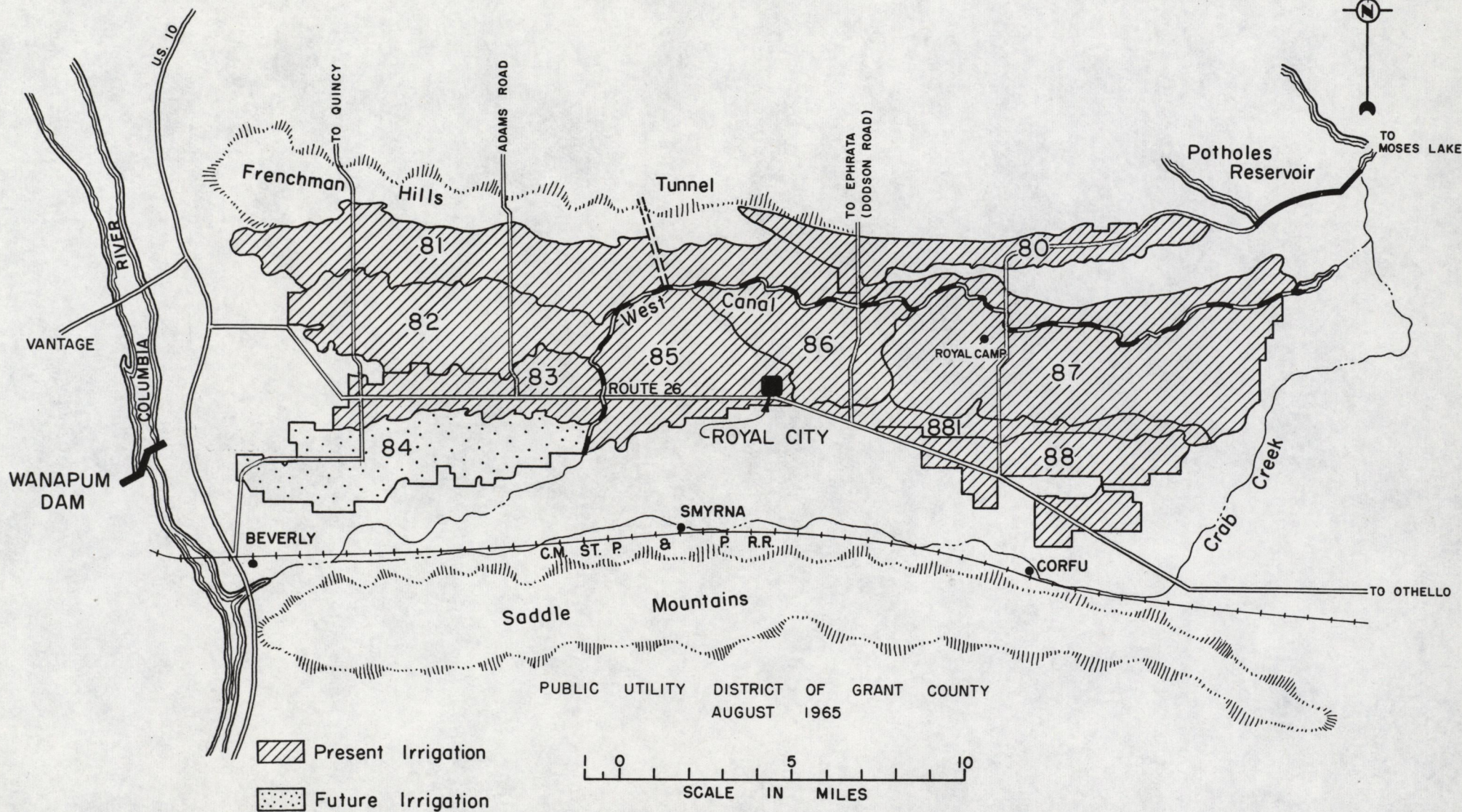


WASHINGTON STATE

# ROYAL SLOPE



GRANT COUNTY





## ROYAL SLOPE AGRICULTURE 1964

Royal Slope's agricultural progress is easily recognized in an eye appealing view from any elevated position on the Frenchman Hills. Not only is additional land being farmed each year but the number of farm homes and building is steadily increasing. Orchards are becoming prevalent and readily landmark the area.

As the Slope grows into maturity, so does Royal City, the center of the Slope's business and social activities. Reflecting the increase in the area's agricultural activity, several significant advances have been made in Royal City during the past two years (1964 and 1965) that are worthy of mention.

1. Starting in September 1964 classes were held in the newly completed Royal City High School. Royal City reported 336 students enrolled in the elementary grades, 123 enrolled in the Junior High School and 100 in the Senior High School.
2. Authorization for a post office was granted in June 1964. In August the Poarch building was completed and the post office, the Titan Cafe and Miller's Pharmacy leased space.
3. Royal City received approval as a community qualified for F. H. A. (Federal Housing Administration) loans in the fall of 1964.
4. A new well and a 100,000 gallon storage tank were added to Royal City's water supply in 1965.
5. A new municipal sewer system was also completed in 1965 to meet the growing needs of the community.

Many other businesses expanded their operations, built new plant facilities and/or opened stores and offices in Royal City during this period. Royal City's population reflected this growth. In 1963, 1964 and 1965, the reported population of the community was 301, 328 and 400 respectively.

Of the five church denominations in Royal City, the Methodist, Nazarene and Catholic congregations now have their own churches and the Baptist congregation has a building program started. The Lutheran congregation is the fifth denomination in Royal City.

Royal City is the hub of Royal Slope's farming activity principally



because of its central location and, in part, because of its distance from neighboring communities. The following table reveals the distance to neighboring communities and their respective populations.

TABLE I

Comparison of distance to and population of Royal City's neighboring communities:

<u>Neighboring Community</u>	<u>Distance To</u>	<u>Population*</u>
Moses Lake	34	11,000
Ephrata	33	7,000
Quincy	31	3,380
Othello	24	3,297
George	22	300
Beverly	18	---
Wanapum	18	---
Smyrna	7	---

\* Washington State Department of Health

Royal Slope is in a sense isolated. Located in the southern half of the Quincy Irrigation District, the Slope is an area approximately eleven miles wide, bounded on the north by the Frenchman Hills and on the south by the Saddle Mountains. It is 32 miles long, reaching nearly to the Columbia River on its west boundary and to the Columbia National Wildlife Refuge on its east side.

Although water was first delivered to the Quincy Irrigation District in 1952, Royal Slope did not receive irrigation water until 1956. The Slope is divided into ten irrigation blocks and, when it reaches full development, 90,504 acres of land will be irrigable. Eight of these ten irrigation blocks were receiving water in 1964. Only Blocks 81 and 84 remained undeveloped in 1964. The irrigable area of the eight irrigation blocks receiving water in 1964 was 69,980 acres or 77 percent of the ultimate irrigable acreage. In 1965 Block 81 added 13,853 acres to the existing irrigable area, bringing the total to 83,833 irrigable acres. Table II shows the year each block received or is to receive water, the farm units and net irrigable acreage in each block.



TABLE II  
ROYAL SLOPE - DEVELOPMENT POTENTIAL

<u>Irrigation Blocks</u>	<u>Year Water Available</u>	<u>Farm Units Planned</u>	<u>Net Acreage Irrigable</u>
80	1962	102	10,397
81	1965	124	13,853
82	1960	105	9,448
83	1961	68	6,837
84	1972	55	6,671*
85	1959	120	9,596
86	1956	91	7,030
87	1956	218	17,781
88	1961	56	6,442
881	1960	<u>22</u>	<u>2,449</u>
TOTAL		<u>961</u>	<u>90,504</u>

\* From preliminary unpublished land development schedule dated September 30, 1964.

SOURCE: U. S. Bureau of Reclamation, Columbia Basin Project Land Development Schedule, April 1965.

Not all of the irrigable acreage has been developed. Land development is a gradual but progressive process and there are both undeveloped and partially developed units within each block. See Table III.



TABLE III  
1964 ROYAL SLOPE AGRICULTURAL STATISTICS

<u>Irrigation Blocks</u>	<u>Irrigable Area of Units Re- ceiving Water</u>	<u>Acreage in Irrigation Rotation</u>	<u>Acreage of Crops Harvested*</u>	<u>Acreage Gravity Irrigated</u>	<u>Acreage Sprinkler Irrigated</u>	<u>Units Farmed</u>	<u>Farm Pop.</u>
80	6,562	5,602	5,037	4,870	503	65	93
81	---	---	---	---	---	---	---
82	8,013	7,317	6,837	6,382	551	85	99
83	6,316	5,636	6,115	3,172	2,322	63	65
84	---	---	---	---	---	---	---
85	7,609	6,669	6,553	5,977	606	97	90
86	6,214	5,325	5,242	4,678	592	80	164
87	17,395	15,281	13,860	11,451	3,565	210	412
88	5,248	4,555	4,466	3,832	603	45	104
881	<u>1,169</u>	<u>885</u>	<u>740</u>	<u>683</u>	<u>157</u>	<u>11</u>	<u>15</u>
TOTAL	<u>58,526</u>	<u>51,270</u>	<u>48,850</u>	<u>41,045</u>	<u>8,899</u>	<u>656</u>	<u>1,042</u>

\* Includes multiple crop acreage. Excludes acreage of crops on Class 6 land.

SOURCE: U. S. Bureau of Reclamation, Columbia Basin Project Crop Reports, April 1965.



The irrigable acreage of units developed or partially developed in 1964 totaled 58,526 acres or 83.6 percent of the irrigable area (irrigation blocks) then receiving water or 64.7 percent of full development. The total acreage in irrigated rotation was 51,270 acres or better than 13 percent greater than that reported in 1963. The harvested crop acreage increased 12 percent from 1963 to 1964 and the tonnage of crops harvested jumped 8 percent. The progress that each block has made toward full service, i. e., full development is revealed by the bar chart on page 6. Comparison of these various progress indicators is shown in Table IV for the years 1962, 1963 and 1964.

TABLE IV  
ROYAL SLOPE DEVELOPMENT  
1962, 1963 and 1964

	1962	1963	1964	Percent Increase 1963-64
Irrigable acreage of units receiving water	41,535	52,736	58,526	11.0%
Acreage in irrigation rotation	35,611	45,098	51,270	13.7%
Acreage of crops harvested*	31,150	43,565	48,850	12.1%
Approximate tonnage of crops harvested	148,557	242,913	262,421	8.0%
Acreage gravity irrigated	29,678	37,570	41,045	9.2%
Acreage sprinkler irrigated	4,797	6,749	8,899	31.9%
Units farmed	481	598	656	9.7%
Population: Farm	690	899	1,042	15.9%
Population: Royal City	**	301	328	9.0%

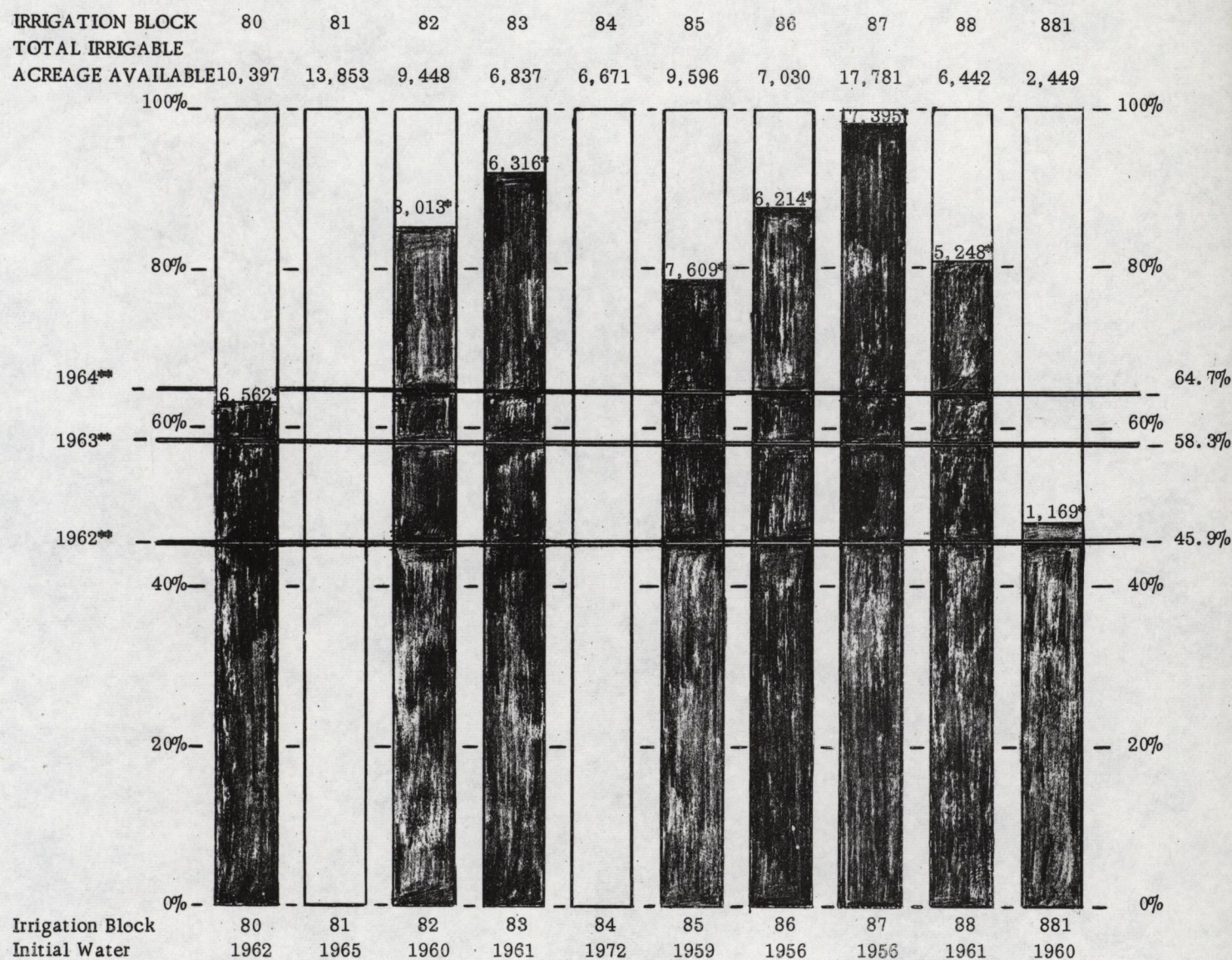
\* Includes multiple crop acreage. Excludes acreage of crops on Class 6 land.

\*\* Incorporated 1962.

SOURCE: U. S. Bureau of Reclamation, Columbia Basin Project Crop Reports.



# PERCENT OF IRRIGABLE ACREAGE RECEIVING WATER ON ROYAL SLOPE 1964



		Acres	Percent
Irrigable area of Units Receiving Water	1962	41,535	45.9%
on Royal Slope (90,504 acres = 100%)	1963	52,736	58.3%
	1964	58,526	64.7%

\*Irrigable Acreage of Units Receiving Water (by Block)

\*\*Percent of Irrigable Area Developed on Royal Slope

Source: U.S. Bureau of Reclamation, Columbia Basin Project Crop Reports



The Public Utility District of Grant County had 140 irrigation accounts on Royal Slope in 1964 with a total rating of 3,406 horsepower. The acreage of farmland under sprinkler irrigation increased by more than 31 percent (2,150 acres) in 1964. See Table V for the number of irrigation accounts, the total horsepower rating and the acreage sprinkler irrigation for 1963, 1964 and 1965.

TABLE V  
SPRINKLER IRRIGATION ON ROYAL SLOPE

	1963	1964	1965*
PUD Irrigation Accounts	105	140	153
Horsepower Rating	2,568	3,406	3,800
Acreage Sprinkler Irrigated	6,749	8,899	---

\* Preliminary data.

SOURCE: Public Utility District of Grant County.

### ORCHARDS

Considerable interest has been expressed in orchard development on Royal Slope because of its relatively long frost free growing season. Apples and pears are the most popular fruit trees. The 1964 USBR Crop Report shows 184 acres of apple trees and 77 acres of pear trees "bearing" fruit. Actually more than 937 acres of orchards are planted on the Slope at the present time, however, only 290 acres of orchards were classified as "bearing" by the USBR. Table VI reveals the acreage of orchard crops by irrigation block.

TABLE VI  
1964 ORCHARD ACREAGE - TOTAL PLANTING

<u>Block No.</u>	<u>Apples</u>	<u>Cherries</u>	<u>Peaches</u>	<u>Pears</u>	<u>Prunes</u>
80	99	4	--	--	--
82	6	6	--	12	--
83	--	--	--	--	--
85	13	--	7	20	--
86	188.5	39.5	3	82	--
87	196.5	116.0	26.5	88.5	10
88	--	20.0	--	--	--
881	--	--	--	--	--
TOTAL	<u>503.0</u>	<u>185.5</u>	<u>36.5</u>	<u>202.5</u>	<u>10</u>

SOURCE: U. S. Bureau of Reclamation and others.



## 1964 CROP PRODUCTION

With a 12 percent increase in the crop acreage harvested and an 8 percent increase in tonnage of crops harvested, Royal Slope can be proud of its development progress this past year. More than forty different crops were grown on Royal Slope in 1964. Seven crops - alfalfa, wheat, dry and edible beans, potatoes, sugar beets, pea seed and irrigated pasture - accounted for 85.7 percent of the acreage cropped. Alfalfa and wheat were the two largest crops, with 15,488 acres and 9,582 acres respectively. Of the eight irrigation blocks presently developed, Block 87 is the largest (17,781 acres) and best developed (17,395 acres). It accounted for 28 percent of the total crop acreage harvested on the Slope and contributed significantly to the acreage production of the Slope's leading crops. The relative importance of these seven crops to Royal Slope's crop production and of Block 87's contribution is shown in Table VII.

The total acreage of crops harvested on the Slope in 1964 was 48,850 acres of which 1,846 were multiple cropped; that is, more than one crop was harvested from the land during the farming period. Most of the multiple cropping was done on alfalfa acreage. Table VIII reveals the acreage of the various crops in each irrigation block.

Yields on each crop are shown in Table IX. Of note, both the acreage and yields of orchard crops, as reported in this table, may be misleading to the reader. Only those orchards classified as "bearing" are reported. Yields on orchard crops vary as to the maturity of the trees. Many orchards on Royal Slope are new and haven't reached maturity. In fact, only 31 percent of the orchard acreage on the Slope is in a "bearing" status.

Crop acreage, yields and average yields, and tonnages are reported in Table X. Total tonnage produced in 1964 is approximately 51 percent of the estimated tonnage that the Slope would produce at full development.<sup>1/</sup> Using the same criteria, Royal Slope's crop production (acreage) is approximately 55 percent of full development.

Yes, progress is evident to those who live on or travel across Royal Slope. This area is in its youth, it is energetic, and those who live here and those who farm here are dedicated to its continued development.

<sup>1/</sup> Table XI, Page 19, Royal Slope Agriculture and Projected Crop Production Estimates, Public Utility District of Grant County, January 1964.



TABLE VII  
RELATIVE IMPORTANCE OF TOP SEVEN CROPS ON ROYAL SLOPE IN 1964

	<u>Alfalfa Hay*</u>	<u>Wheat*</u>	<u>Dry &amp; Edible Beans</u>	<u>Early &amp; Late Potatoes</u>	<u>Sugar Beets</u>	<u>Pea Seed*</u>	<u>Irrigated Pasture</u>	<u>Other*</u>	<u>Total</u>
Crop acreage	15,488	9,582	5,661	4,862	2,775	2,393	1,091	6,998	48,850
Percent of total crop acreage harvested	31.7%	19.6%	11.6%	10.0%	5.7%	4.9%	2.2%	14.3%	100%
6 Crop acreage in Block 87	4,941	2,767	1,152	565	1,076	755	710	1,894	13,860
Percentage of crops produced in Block 87	31.9%	28.9%	20.3%	11.6%	18.6%	31.6%	65.1%	27.1%	28.4%

\* Includes multiple crop acreage

SOURCE: U. S. Bureau of Reclamation, Columbia Basin Project Crop Reports, April 1965.



TABLE VIII  
1964 CROP ACREAGE ON ROYAL SLOPE  
REPORTED BY IRRIGATION BLOCK

IRRIGATION BLOCKS	<u>80</u>	<u>82</u>	<u>83</u>	<u>85</u>	<u>86</u>	<u>87</u>	<u>88</u>	<u>881</u>	<u>TOTAL</u>
<u>CEREAL CROPS - 12, 252 acres</u>									
Barley	9	58	123	45	35	222	32	20	544
Corn	130	---	---	104	122	483	51	52	942
Oats	10	40	20	15	---	73	---	---	158
Rye	---	---	3	7	---	---	---	---	10
Sorghums	---	---	---	---	828	2	---	---	830
Wheat	1798	1094	1277	1741	---	2762	752	143	9567
Wheat, M/C	---	---	---	10	---	5	---	---	15
Mixed Grain	18	10	---	6	---	112	---	40	186
<u>FORAGE CROPS - 18, 204 acres</u>									
Alfalfa Hay, Est.	1122	2188	1947	1503	1739	4456	333	132	13420
Alfalfa, M/C	---	139	776	182	21	163	98	---	1379
Alfalfa, N/S	---	174	151	42	---	322	---	---	689
Grass Hay	---	---	---	12	---	4	---	---	16
Grass Hay, M/C	---	---	---	---	8	---	70	---	78
Other Hay	---	127	744	76	22	---	---	---	969
Other Hay, M/C	---	18	70	---	---	40	---	---	128
Irrigated Pasture	12	---	47	99	127	710	96	---	1091
Silage	---	57	50	17	26	209	30	20	409
Silage, M/C	---	25	---	---	---	---	---	---	25
<u>MISCELLANEOUS FIELD CROPS - 9, 140 acres</u>									
Beans, Dry & Edible	606	1122	387	717	477	1152	1030	170	5661
Peppermint	60	---	---	159	239	177	---	---	635
Spearmint	---	---	---	50	14	---	---	---	64
Sugar Beets	86	---	12	499	632	1076	452	18	2775
Garbanzos	---	---	---	---	5	---	---	---	5
<u>VEGETABLE CROPS - 5, 266 acres</u>									
Rutabagas	---	---	---	---	---	4	---	---	4
Corn, Sweet	28	---	---	18	---	85	---	---	131
Watermelons	---	---	---	---	---	---	60	---	60
Onions, Dry	11	10	---	---	---	4	150	---	175
Peas, Green, Canning	---	25	---	---	---	---	---	---	25
Potatoes, Early	867	141	68	283	195	521	610	105	2790
Potatoes, Late	131	870	60	468	202	44	287	10	2072
Tomatoes	8	---	---	---	---	---	---	---	8
Melons	---	---	---	---	---	1	---	---	1
<u>NURSERY CROPS - 1 acre</u>									
Hop Roots	1	---	---	---	---	---	---	---	1



TABLE VIII (cont.)  
1964 CROP ACREAGE ON ROYAL SLOPE  
REPORTED BY IRRIGATION BLOCK

IRRIGATION BLOCKS	<u>80</u>	<u>82</u>	<u>83</u>	<u>85</u>	<u>86</u>	<u>87</u>	<u>88</u>	<u>881</u>	<u>TOTAL</u>
<u>SEED CROPS - 3,687 acres</u>									
Alfalfa Seed	---	17	50	88	41	323	43	---	562
Alfalfa Seed, M/C	---	70	---	29	30	---	---	---	129
Clover Seed, Red	---	254	40	39	---	45	---	---	378
Clover Seed, M/C	---	---	---	50	---	---	---	---	50
Clover Seed, Other	---	40	---	---	---	---	---	---	40
Pea Seed	140	323	290	230	273	755	310	30	2351
Pea Seed, M/C	---	---	---	42	---	---	---	---	42
Radish Seed	---	25	---	---	---	---	---	---	25
Bean Seed	---	---	---	---	---	---	60	---	60
Turnip Seed	---	10	---	---	---	---	---	---	10
Mustard Seed	---	---	---	22	---	---	---	---	22
Grass Seed	---	---	---	---	8	---	---	---	8
Orchard Grass	---	---	---	---	---	10	---	---	10
<u>FRUITS - 291 acres</u>									
Apples	---	---	---	---	132	52	---	---	184
Cherries	---	---	---	---	8	6	---	---	14
Peaches	---	---	---	---	3	12	---	---	15
Pears	---	---	---	---	55	22	---	---	77
Berries	---	---	---	---	---	1	---	---	1
<u>FAMILY GARDENS - 9 acres</u>									
Gardens	---	---	---	---	---	7	2	---	9
TOTALS	<u>5037</u>	<u>6837</u>	<u>6115</u>	<u>6553</u>	<u>5242</u>	<u>13860</u>	<u>4466</u>	<u>740</u>	<u>48850</u>

M/C - Multiple Cropped; N/S - New Seeding

SOURCE: U. S. Bureau of Reclamation, Columbia Basin Project Crop Reports, April 1965.



TABLE IX  
1964 CROP PRODUCTION YIELDS ON ROYAL SLOPE  
REPORTED BY IRRIGATION BLOCK

IRRIGATION BLOCKS		80	82	83	85	86	87	88	881	TOTAL
<u>CEREAL CROPS</u>										
Barley	bu	675	6145	7740	2718	2465	14888	766	1400	36797
Corn	bu	11466	---	---	12020	12275	52411	4302	4575	97049
Oats	bu	200	1440	1200	930	---	5367	---	---	9137
Rye	bu	---	---	36	308	---	---	---	---	344
Sorghums	bu	---	---	---	---	66145	100	---	---	66245
Wheat	bu	123429	73018	106581	134392	---	218466	54807	10105	720798
Wheat, M/C	bu	---	---	---	300	---	370	---	---	670
Mixed Grain	bu	720	100	---	330	---	5600	---	3600	10350
<u>FORAGE CROPS</u>										
Alfalfa, Est.	ton	5498	10893	10179	8212	9356	25405	1410	500	71453
Alfalfa, M/C	ton	---	109	1307	385	42	178	124	---	2145
Alfalfa, N/S	ton	---	453	151	49	---	792	---	---	1445
Grass Hay	ton	---	---	---	30	---	8	---	---	38
Grass Hay, M/C	ton	---	---	---	---	8	---	95	---	103
Other Hay	ton	---	148	944	109	44	---	---	---	1245
Other Hay, M/C	ton	---	---	70	---	---	42	---	---	112
Irrigated Pasture	AUM	85	138	364	840	1517	5736	209	---	8889
Silage	ton	---	855	1000	407	656	3612	344	240	7114
Silage, M/C	ton	---	375	---	---	---	---	---	---	375
Straw, All Kinds	ton	1	---	60	---	---	---	---	---	61
<u>MISCELLANEOUS FIELD CROPS</u>										
Beans, Dry & Edible	cwt	8956	20486	7538	15566	9293	21428	22276	3600	109143
Peppermint	lbs	3720	---	---	9750	14215	9586	---	---	37271
Spearmint	lbs	---	---	---	3000	1050	---	---	---	4050
Sugar Beets	ton	1901	---	269	8807	14295	23376	10054	324	59026
Garbanzos	ton	---	---	---	---	2	---	---	---	2
<u>VEGETABLE CROPS</u>										
Rutabagas	ton	---	---	---	---	---	40	---	---	40
Corn, Sweet, P	ton	196	---	---	54	---	398	---	---	648
Watermelons	ton	---	---	---	---	---	---	480	---	480
Onions, Dry	cwt	4300	4000	---	---	---	1200	76000	---	85500
Peas, Green, C	ton	---	12	---	---	---	---	---	---	12
Potatoes, Early	cwt	296220	39400	25080	67440	58800	166980	198100	30000	882020
Potatoes, Late	cwt	52400	290140	14400	124560	57380	13040	112080	2400	666400
Tomatoes	lug	5000	---	---	---	---	---	---	---	5000
Melons	crate	---	---	---	---	---	150	---	---	150
<u>NURSERY CROPS</u>										
Hop Roots	M	10	---	---	---	---	---	---	---	10



TABLE IX (cont. )  
1964 CROP PRODUCTION YIELDS ON ROYAL SLOPE  
REPORTED BY IRRIGATION BLOCK

IRRIGATION BLOCKS		<u>80</u>	<u>82</u>	<u>83</u>	<u>85</u>	<u>86</u>	<u>87</u>	<u>88</u>	<u>881</u>	<u>TOTAL</u>
<u>SEED CROPS</u>										
Alfalfa Seed	cwt	---	37	66	176	112	929	129	---	1449
Alfalfa Seed, M/C	cwt	---	165	---	29	300	---	---	---	494
Clover Seed, Red	cwt	---	994	170	96	---	262	---	---	1522
Clover Seed, M/C	cwt	---	---	---	150	---	---	---	---	150
Clover Seed, Other	cwt	---	360	---	---	---	---	---	---	360
Pea Seed	cwt	3187	4905	3440	4416	7362	15094	7997	450	46851
Pea Seed, M/C	cwt	---	---	---	392	---	---	---	---	392
Radish Seed	cwt	---	250	---	---	---	---	---	---	250
Bean Seed	cwt	---	---	---	---	---	---	600	---	600
Turnip Seed	cwt	---	100	---	---	---	---	---	---	100
Mustard Seed	cwt	---	---	---	264	---	---	---	---	264
Grass Seed	cwt	---	---	---	---	116	---	---	---	116
Orchard Grass Seed	cwt	---	---	---	---	---	20	---	---	20
<u>FRUITS</u>										
Apples	cwt	---	---	---	---	9450	2885	---	---	12335
Cherries	cwt	---	---	---	---	180	260	---	---	440
Peaches	cwt	---	---	---	---	60	489	---	---	549
Pears	cwt	---	---	---	---	1482	3650	---	---	5132
Berries	cwt	---	---	---	---	---	90	---	---	90

M/C - Multiple Cropped; N/S - New Seeding; AUM - Animal Unit Month, Est. - Established;  
P - Processing; C - Canning; M - Thousand.

SOURCE: U. S. Bureau of Reclamation, Columbia Basin Project Crop Reports, April 1965.



TABLE X  
1964 ROYAL SLOPE CROP PRODUCTION

CROPS	TOTAL CROP	CROP YIELD			CROP
	ACREAGE	TOTAL		AVG.	TONNAGE
CEREAL CROPS					
Barley	544	36,797	bu.	67.6	883
Corn	942	97,049	bu.	103.0	2,717
Oats	158	9,137	bu.	57.8	146
Rye	10	344	bu.	34.4	10
Sorghums	830	66,245	bu.	79.8	1,656
Wheat	9,567	720,798	bu.	75.3	21,624
Wheat, M/C	15	670	bu.	44.7	20
Mixed Grain	186	10,350	bu.	55.6	248
FORAGE CROPS					
Alfalfa, Est.	13,420	71,453	ton	5.3	71,453
Alfalfa, M/C	1,379	2,145	ton	1.6	2,145
Alfalfa, N/S	689	1,445	ton	2.1	1,445
Grass Hay	16	38	ton	2.4	38
Grass Hay, M/C	78	103	ton	1.3	103
Other Hay	969	1,245	ton	1.3	1,245
Other Hay, M/C	128	112	ton	.9	112
Irrigated Pasture	1,091	8,889	AUM	8.1	---
Silage	409	7,114	ton	17.4	7,114
Silage, M/C	25	375	ton	15.0	375
Straw, All Kinds	---	61	ton	---	61
MISCELLANEOUS FIELD CROPS					
Beans, Dry & Edible	5,661	109,143	cwt	19.3	5,457
Peppermint	635	37,271	lbs	58.7	19
Spearmint	64	4,050	lbs	63.3	2
Sugar Beets	2,775	59,026	ton	21.3	59,026
Garbanzos	5	2	ton	.4	2
VEGETABLES					
Rutabagas	4	40	ton	10.0	40
Corn, Sweet, P	131	648	ton	4.9	648
Watermelons	60	480	ton	8.0	480
Onions, Dry	175	85,500	cwt	488.6	4,275
Peas, Green, C	25	12	ton	.5	12
Potatoes, Early	2,790	882,020	cwt	316.1	44,101
Potatoes, Late	2,072	666,400	cwt	321.6	33,320
Tomatoes	8	5,000	lug	625.0	80
Melons	1	150	crate	150.0	6
NURSERY CROPS					
Hop Roots	1	10	M	10.0	---



TABLE X (cont.)  
1964 ROYAL SLOPE CROP PRODUCTION

CROPS	TOTAL CROP ACREAGE	CROP YIELD		CROP TONNAGE
		TOTAL	AVG.	
SEED CROPS				
Alfalfa Seed	562	1,449	cwt 2.6	72
Alfalfa Seed, M/C	129	494	cwt 3.8	25
Clover Seed, Red	378	1,522	cwt 4.0	76
Clover Seed, M/C	50	150	cwt 3.0	8
Clover Seed, Other	40	360	cwt 9.0	18
Pea Seed	2,351	46,851	cwt. 19.9	2,343
Pea Seed, M/C	42	392	cwt 9.3	20
Radish Seed	25	250	cwt 10.0	13
Bean Seed	60	600	cwt 10.0	30
Turnip Seed	10	100	cwt 10.0	5
Mustard Seed	22	264	cwt 12.0	13
Grass Seed	8	116	cwt 14.5	6
Orchard Grass Seed	10	20	cwt 2.0	1
FRUITS				
Apples	184	12,335	cwt 67.0	617
Cherries	14	440	cwt 31.4	22
Peaches	15	549	cwt 36.6	27
Pears	77	5,132	cwt 66.6	257
Berries	1	90	cwt 90.0	5
FAMILY GARDENS	9	---	---	---
TOTAL ACRES	48,850	TOTAL TONNAGE		262,421

M/C - Multiple Cropped; N/S - New Seeding; P - Processing; C - Canning;  
AUM - Animal Unit Month; M - Thousand.

SOURCE: U. S. Bureau of Reclamation, Columbia Basin Project Crop Reports, April 1965.