



Placing impervious material — left embankment.

PRIEST RAPIDS DEVELOPMENT

Progress Report • 2nd Quarter 1957

Prepared by

HARZA ENGINEERING COMPANY

Construction Engineer for

GRANT COUNTY PUBLIC UTILITY DISTRICT No. 2

HARZA ENGINEERING COMPANY CONSULTING ENGINEERS

DAILY NEWS BUILDING
400 WEST MADISON STREET
CHICAGO 6, ILLINOIS

CALVIN V. DAVIS
PRESIDENT

CABLE ADDRESS "HARZENG CHICAGO"
TELEPHONE RANDOLPH 6-3451

July 15, 1957

COLUMBIA RIVER - PRIEST RAPIDS HYDROELECTRIC PRODUCTION SYSTEM

Quarterly Progress Report

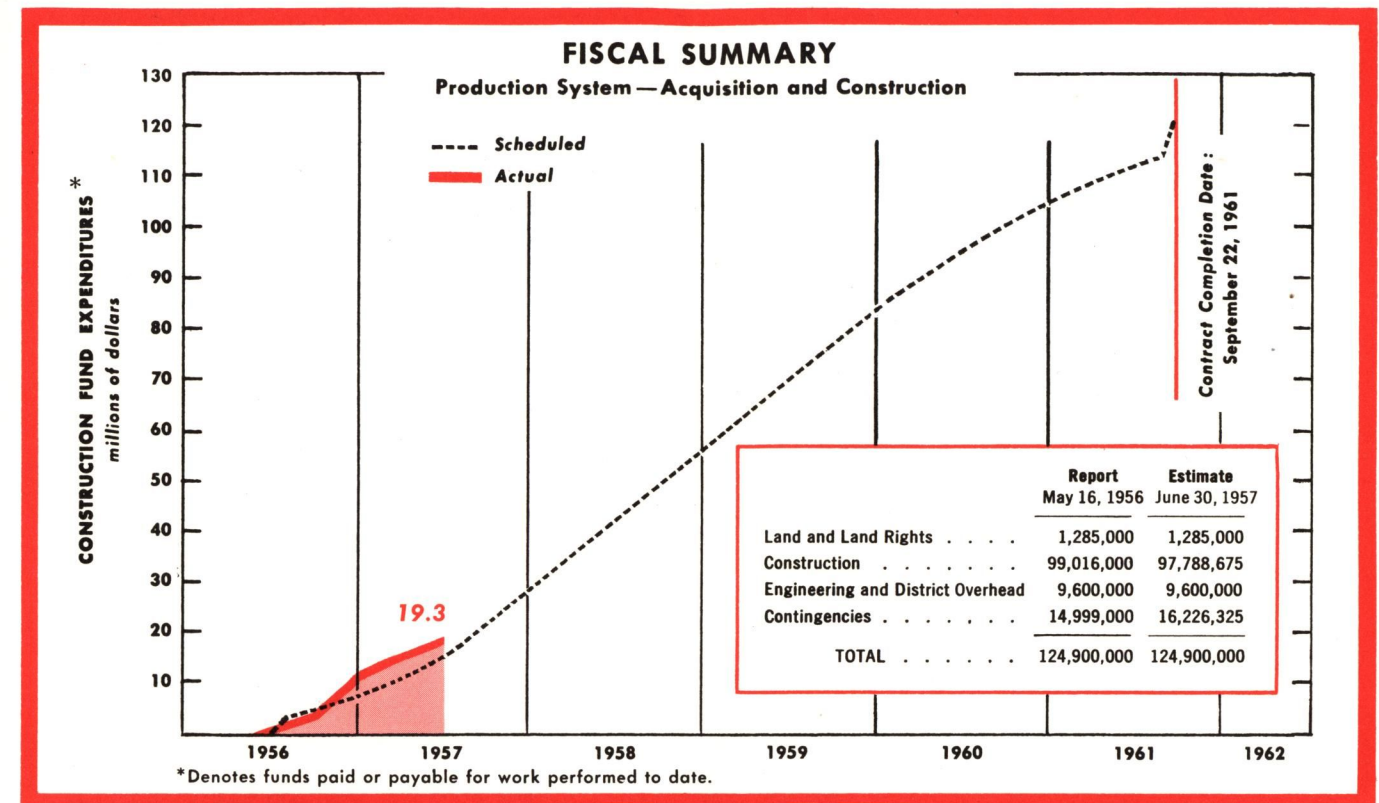
During the Second Quarter of 1957, the usual seasonal run-off occurred in the Columbia River Basin. After a low flow of 50,000 cubic feet per second in April, there was an increase to 420,000 on May 27, which is slightly under a normal high flow. Although this restricted construction activities somewhat, the performance and progress of Merritt-Chapman & Scott Corporation has continued very satisfactorily. Earnings of \$4,300,000 brought their overall progress to 16%.

Notable highlights were: (1), the first aggregate and pozzolan produced; (2), initial fill material placed in left embankment; and, (3), first concrete poured. The latter event was the subject of ceremonies on April 25 which had many government officials and distinguished guests in attendance. Governor Albert D. Rosselini of the State of Washington triggered the placement of the first bucket of concrete.

Construction plant and facilities have been essentially completed. Last major facility completed was the temporary bridge over the Columbia. First rail shipment crossed in April. During high water which overtopped the spillway cofferdam as planned, some damage was sustained by the cofferdam. Necessary repairs are underway.

Good progress was made on excavation of the powerhouse, left embankment, and fish passing facilities. Initial impervious core and transitional earth fill material was placed in the left embankment. Concrete placing in the powerhouse and fish passing facilities area totalled 32,000 cubic yards and reached a 1600 per-day rate by the end of the period.

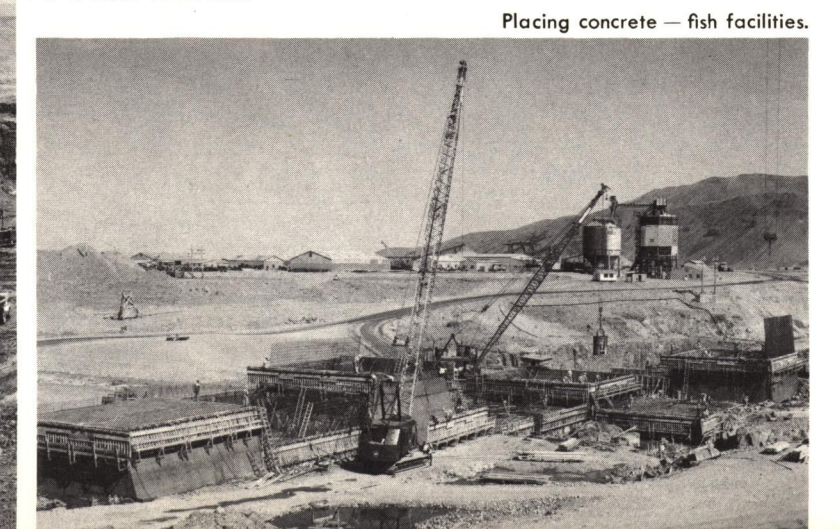
Calvin V. Davis
Calvin V. Davis
President



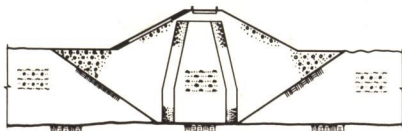
Powerhouse excavation.



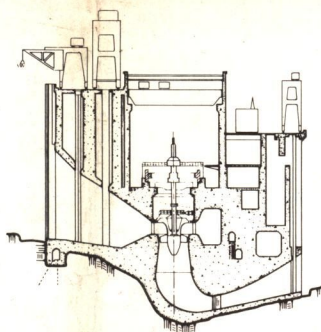
Powerhouse excavation



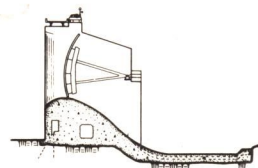
Placing concrete — fish facilities.



EARTH EMBANKMENT



POWERHOUSE



SPILLWAY

CONSTRUCTION PROGRESS SUMMARY

AS OF JUNE 30, 1957

 SCHEDULED
  FINISHED

Access and Construction Plant

Cofferdams — River Diversion

Excavation

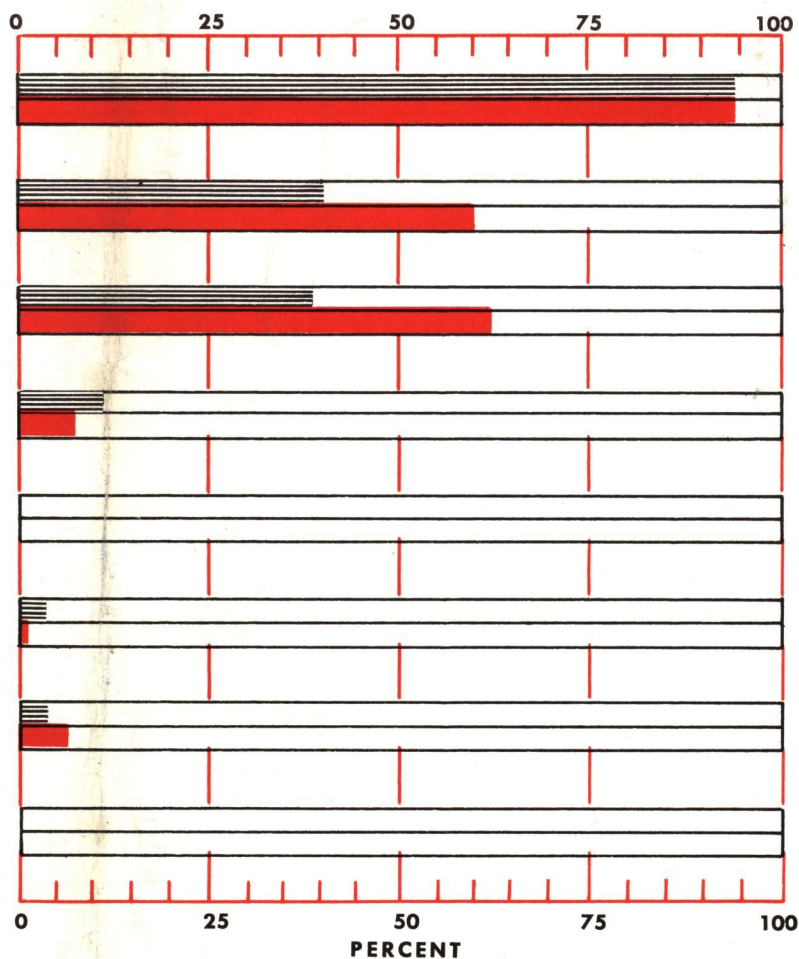
Embankment

Concrete Dam and Spillway

Powerhouse

Turbines and Generator — Manufacture

Turbines and Generator — Installation



POWER GENERATION



unit 1



unit 2



unit 3



unit 4



unit 5



unit 6



unit 7



unit 8