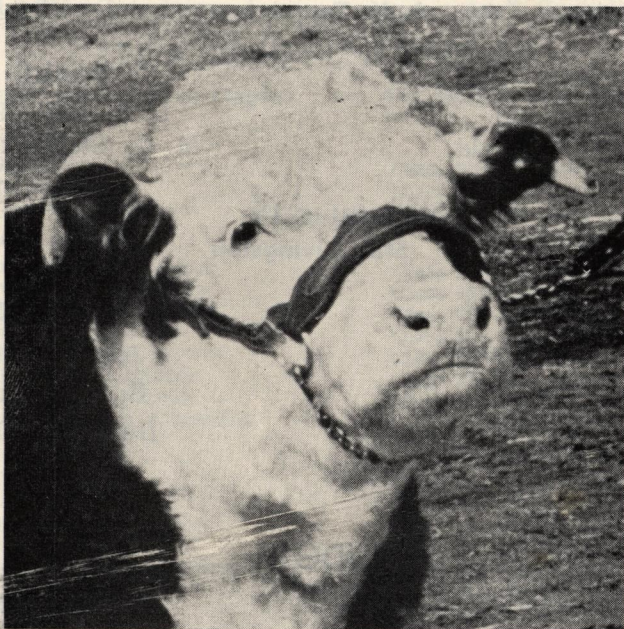


FIRST ANNUAL
Central Washington Junior
Livestock Show
TOPPENISH, WASHINGTON
May 4 - 5 - 6

Exhibits By

**FUTURE FARMERS OF AMERICA
4-H CLUB MEMBERS**



Sponsored By
**TOPPENISH CHAMBER OF COMMERCE
TOPPENISH RODEO & LIVESTOCK ASSOCIATION**

1950 Officers

Central Washington Junior Livestock Show

I. C. Benz Chairman
Wilfred C. Hall Co-Chairman

Frank Riches Show Superintendent
Fern Beaulaurier Secretary- Treasurer

THE SHOW COMMITTEE

GROUNDS

Wilfred C. Hall
Laurent Regimbal

Housing and Concessions

Don Smith
Galen F. Ramsay

BANQUET

A. K. Temperley

SALE

Al Burratto
Norman McDonald

SCALE

D. E. (Pat) Clyde
M. G. (Steve) Rickert

PUBLICITY

Stan Livingston

FINANCE

Joseph C. Murphy
Ernest Meyers
Herb Harmon
Delmar Bice
Don Stites

TROPHIES

John Griffith
Edgar C. Reif
Dwight Henley

JUDGES

CATTLE

C. W. Hodson
A-H Dep't., Univ. of Idaho
MOSCOW, IDAHO

SHEEP-SWINE

E. E. Goodwin
A-H Dep't., W.S.C.
PULLMAN, WASH.

Organization . . .

FRANK RICHES, Buena Show Superintendent
EDGAR C. REIF, Yakima Ass't. Sup't. for 4-H Clubs
ROBERT CORLESS, Sunnyside Ass't. Sup't. for F.F.A.

BEEF DIVISION

HARRY HUNTER, White Swan Superintendent, F.F.A.
EARL COOKE, Yakima Ass't. Superintendent, F.F.A.
ELMER HUCKFELDT, Goldendale Superintendent, 4-H
DONALD DODGE, Wapato Ass't. Superintendent, 4-H

SWINE DIVISION

DWIGHT HENLEY, Wapato Superintendent, F.F.A.
BYRON McCLANAHAN, Toppenish Assistant Superintendent, F.F.A.
FRANK WEBSTER, Kennewick Superintendent, 4-H
WAYNE STULL, Yakima Ass't Superintendent, 4-H

SHEEP DIVISION

HAROLD JONES, Toppenish Superintendent, F.F.A.
HOMER WHITE, Granger Ass't. Superintendent, F.F.A.
LAWRENCE BROWN, Pasco Superintendent, 4-H
E. S. McCULLOH, Grandview Ass't Superintendent, 4-H

CLASSIFICATIONS

Future Farmers of America Dept.

BEEF

Class 1—Shorthorns
Class 2—Herefords
Class 3—Aberdeen Angus

FAT LAMBS

Class 4—Purebred Hampshires
Class 5—Purebred Shropshire
Class 6—Purebred Southdowns
Class 7—Purebred Suffolks
Class 8—Grades and Crossbreds
Class 9—All Other Purebreds
Class 10—Pen of Four Lambs —
Any Breed or Crossbred

FAT HOGS

Class 11—Hampshires
Class 12—Berkshires
Class 13—Duroc Jerseys
Class 14—Poland Chinas
Class 15—Spotted Poland Chinas
Class 16—Yorkshires
Class 17—Chester Whites
Class 18—Herefords
Class 19—Grades and Crossbreds
Class 20—Pen of Four Hogs—Any or
Mixed Breeds Competing

4-H BOYS' and GIRLS' DEPT.

BEEF

Class 21—Shorthorns
Class 22—Herefords
Class 23—Aberdeen Angus

FAT LAMBS

Class 24—Purebred Hampshires
Class 25—Purebred Shropshires
Class 26—Purebred Southdowns
Class 27—Purebred Suffolks
Class 28—Grades and Crossbreds
Class 29—All other Purebreds
Class 30—Pen of Four Lambs—Any
Breed or Crossbred

FAT HOGS

Class 31—Purebred Berkshires
Class 32—Purebred Duroc Jerseys
Class 33—Purebred Poland Chinas
Class 34—Spotted Poland Chinas
Class 35—Purebred Yorkshires
Class 36—Purebred Chester Whites
Class 37—Purebred Hampshires
Class 38—Herefords
Class 39—Grades and Crossbreds
Class 40—Pen of Four Hogs—Any or
Mixed Breeds Competing

A word of welcome . . .

To the hundreds of boys and girls, their instructors and club leaders, we extend a most hearty welcome to this first annual Central Washington Junior Livestock Show. The future success and growth of this outstanding junior event unquestionably hinge upon your continued co-operation and your diligence in carrying out your various school and club projects. The show is designed for you to provide an incentive to get the most out of your individual undertakings and in so doing better prepare you for your place in the livestock and allied industries upon completion of your education. We hope you enjoy your stay in Toppenish!

Joseph C. Murphy
President Toppenish Chamber of Commerce

Laurent Regimbal
President Toppenish Rodeo & Livestock Association

We acknowledge . . .

The show committee, the Toppenish Chamber of Commerce and the Toppenish Rodeo & Livestock Association gratefully acknowledge the splendid co-operation displayed by Centennial Flouring Mills, Inc., Valley Headquarters at Granger, Wash., in sponsoring the Friday night banquet for exhibitors and visiting dignitaries. We wish to thank the Toppenish National Guard Unit for its assistance in making available the new national guard building for headquarters for "Show Town" and for housing the show exhibitors. We want to express our appreciation to the scores of individuals and firms who contributed freely of their time and needed materials — working together as a team to help make this first show an outstanding success.

Rules and Regulations . . .

Central Washington Junior Livestock Show Future Farmers of America and 4-H Club Members

Rule 1. Entries will close on April 20, 1950. All entries must be in the office of the Show Secretary at P.O. Box 108, Toppenish, Washington, on or before midnight of that date or bear postmark of that date at point of mailing.

Rule 2. Entries are open to any regularly enrolled Future Farmer or 4-H club member.

ELIGIBILITY

(A) Members of the Future Farmers of America must be regularly enrolled in livestock project work with the State Supervisor of Agricultural Education and must own on or before February 1st, 1950, the livestock to be exhibited.

(B) Members of the 4-H Boys and Girls Clubs must be regularly enrolled in livestock project work with the Agricultural Extension Service of their State Agricultural College and must own on or before February 1st, 1950, the livestock to be exhibited.

(C) Each member of the Future Farmers of America and each member of the 4-H Boys and Girls Club must submit to his high school agricultural instructor or county agent, for his approval, an up-to-date record book of the Show project on standard record books used for this purpose. These record books must be submitted prior to shipment of livestock to the Show.

(D) A signed statement from the high school agricultural instructor or the county agent to the effect that the projects and record books have been approved may be required on the opening date of the Show and before prize money will be awarded.

(E) Entry blanks properly filled out and listing each individual animal to be placed on exhibition must be certified by the agricultural extension agent in the county from which the entry comes, or by the high school agricultural instructor with whom the student is enrolled, and must be sent to the Show Manager before April 20, 1950. Entries postmarked after this date will not be accepted. Please type or print all entries PLAINLY.

(F) Any animal exhibited at any previous show, if entered in this Show must be exhibited by the original owner. No partnership entries will be allowed in the individual classes or in pens.

(G) All exhibitors attending the Show must be responsible to a high school agricultural instructor or a 4-H Club leader for the entire duration of the Show.

(H) Any regularly enrolled college student is ineligible to exhibit and participate in the Junior Livestock Show.

Rule 3. Customary yardage fees will be charged.

Rule 4. All exhibits entered in competition must be consigned for sale to Midstate Packing and Commission Company. All exhibits must be sold in the auction ring, unless rejected by the sifting committee or otherwise determined by the sale committee of the show.

Rule 5. A sifting committee of three competent stockmen will pass on the entries of all fat classes. It will be the duty of this committee to examine the entries and see that they are entered in the proper classes before they are judged. The committee shall also have the authority to withdraw from competition any entry that does not meet classification requirements or that is not of grade and quality good enough to entitle it to compete. This committee shall also have authority to withdraw from the auction sale any stock that, in its opinion, is not carrying sufficient quality and finish to qualify, and be responsible to determine the eligibility of all animals to show and sell.

Rule 6. Exhibitors will not be permitted to bring their own roughage. All hay and straw for bedding used at the show will be supplied by the show committee and costs pro rated. Exhibitors will be permitted to bring other grain feed mixtures and concentrates to supplement the above feeds.

Rule 7. All entries accepted with the understanding that neither the Central Washington Junior Livestock Show organization, nor the sponsors, nor their officers shall be held responsible for any damage or loss that may arise to livestock on exhibition or sale.

Rule 8. All entries must be on the grounds not later than 6:00 p. m., May 3, 1950.

(Continued on page 8)

Central Washington Junior Livestock Show

PROGRAM

Central Washington Junior Livestock Show

ALL ENTRIES MUST BE ON GROUNDS BY 6 P.M. ON WEDNESDAY, May 3

Thursday, May 4

9:30—11:00 a.m.

Judging contest for Future Farmers and 4-H Clubs. (Six classes of fat stock will be judged)

12:30 p.m.

Official opening of the Show

1:00—4:00 p.m.

Classification of animals to market grades.

Selection of contestants for fitting and showing contest.

6:00 p.m.

Off Feed



YOUR HOST CITY

Friday, May 5

6:00 a.m.

Weighing—Cattle, Swine
Lambs

9:00—11:00 a.m.

Classification continued

11:00 a.m.

Selection of Grand
Champions of all classes

12:00 noon

Lunch Hour

1:00 p.m.

Fitting and Showing
Contest

Champion Showman of
Beef, Swine, and Lambs

6:30 p.m.

Exhibitors Banquet — Hi
School Cafeteria

Activity Program

Wednesday Evening — Organization of Show Town; Take in a movie.
(Sponsored by Toppenish American Legion)

Thursday Evening — Gymkana and Junior Rodeo: 7:30 P.M.
(Sponsored by Toppenish Outlaws)

Friday Evening — Banquet - Centennial Mills - Toppenish-Hi Cafeteria

SALE SATURDAY, MAY 6, 10:00 A. M.

Sale of Beef, Lambs, Swine

JACK COPPERSMITH, Union Gap, Wn.

EVAN JENKINS, Prosser, Wn. Auctioneers

FOOD BY ALFALFA GRANGE

Members of Alfalfa Grange are to be complimented for their eager acceptance of the invitation to provide hot meals during the show at their food concession on the grounds. They promise "three squares" a day in addition to sandwiches, short orders, etc.

(Steers)—Each calf shown must be supplied with a rope halter which will go with the calf when sold. Calves weighing less than 650 pounds will not be allowed to compete but will be sold on the open market. Calves grading below good will be sold on the open market.

(Pen of 4)—Pen of 4 hogs will be disqualified if the average weight is less than 170 and more than 240 pounds. No individual hog within the pen can weigh less than 170 or more than 240 pounds.

Rule 9. Hogs—Exhibitors limited to 2 single hogs—one pen of four. Beef—Two single steers. Lambs—No limit on single lambs or pen of 4 lambs.

Rule 10. At the discretion of the committee any hog will be disqualified from the show if it shows evidence of pigginess, scars, hernia, foul sheath, sores and bruises, and any blemishes that impair the carcass cut out.

Rule 11. Each exhibitor or contestant must take care of and exhibit his own animal unless excused by the management for reasons that are deemed sufficient, and will be responsible for the care and cleanliness of his pens or stalls. He must also prepare his animal or animals for use in the Stock Judging contests, on request of the General Superintendent or forfeit his entry or entries and all rights and privileges of the Show.

He must obtain from his leader an information card to be filled out and tacked up in his stall or pen, showing the name and address of the exhibitor, the same of the breeder of the animal, if possible, and the name of the commission firm to whom the entry is consigned.

Rule 12. All protests must be made in writing and presented to the Show Secretary within 24 hours after judging protested entries.

Rule 13. In all classes, any animal disqualified from showing will also be disqualified from the sale. They will be sold on the open market.

Rule 14. Livestock will be listed in the sale and sold in order of their respective grades and placing within the grade.

Rule 15. Steers, lambs and hogs will be taken off feed and water at 6:00 p. m. (Thursday, May 4) prior to the day of weighing. Any violation of this rule will be subject to the judgment of the Sale Committee.

Rule 16. Individual checks from the sale of livestock will be mailed to the schools as soon after the Show as possible. Premium money will be mailed to the schools as soon as possible after the Show. Premium money will be distributed to the schools on what will be known as steer per mile basis, also hog per mile and sheep per mile traveled to the Show. Schools may redistribute money to individuals at their discretion upon receipt of the money.

Rule 17. All classes of livestock will be graded into the following market grades: Hi-Choice, Choice, Good. Individual placings within each grade will be made following grading into groups.

No champion ribbons will be awarded to any animal that does not grade Choice.

Rule 18. Terms of the sale shall be cash. Purchasers will please make arrangements for payment with the commission company before leaving Designation of packing house that is to do the slaughtering should also be made at time of sale.

Rule 19. Pens of four hogs may be of mixed breeds. They will be shown in the pen.

Rule 20. Pen of four lambs may be mixed or cross breeds.

Rule 21. Any exhibitor or contestant found guilty of using or having in possession any intoxicating liquor will be barred from participating or exhibiting.

Rule 22. Any Future Farmer or 4-H Club member guilty of misconduct, ie., destruction of property, boisterous conduct, profane language, etc., may have his stock withdrawn from the Show and both sent home. Members of judging teams and other members of the F.F.A. or 4-H Club visiting the Show, upon misconduct, may disqualify their team from any winnings which they may receive; also such members will be sent home.

JUDGING CONTESTS

J. ARTHUR JOHNSON, Ellensburg.....Superintendent, F.F.A.
SEYMOUR BECK, Kittitas.....Ass't. Superintendent, F.F.A.

MARION BUNNELL, Yakima.....Superintendent, 4-H
JAMES CARTER, Yakima.....Ass't. Superintendent, 4-H

F.F.A. LIVESTOCK JUDGING CONTEST

1. Contest will be held at 9:30 A. M. Thursday morning.
2. Contestant will be able to walk around the stock.
3. Five pennants will be awarded the winning teams.
4. Contestant will judge and grade animals.
Judging will be scored on 100% basis and an additional 10 points will be added for correct grading of each animal within a class.
5. 3 boys will constitute a judging team. Only regularly enrolled Future Farmers will be eligible.

4-H LIVESTOCK JUDGING CONTEST

1. Contest will be held concurrent with that of the FFA contest and the same animals will be judged.
2. Any regularly enrolled 4-H livestock member will be eligible.
3. Judging will be on an individual basis. Awards will be given to high scoring individuals.
4. Grading of animals into market grades will not be required in 4-H judging, but oral reasons for placings will be required on one class.

FITTING AND SHOWING

LYLE JOHNSON, Grandview.....Superintendent, F.F.A.
ED CUSHMAN, Toppenish.....Ass't. Superintendent, F.F.A.

PHIL BLOOM, Ellensburg.....Superintendent, 4-H
KEITH JONES, Grandview.....Ass't. Superintendent, 4-H

FITTING AND SHOWING CONTEST

- A.** Entries are open to any regularly enrolled Future Farmer or 4-H Club member. Entrance in this contest does not bar contestants from other contests in which they are eligible.
- B.** Requirements: Each contestant must own the animal he shows.
- C.** Rating will be as follows: 50% fitting—50% showing. Awards in each division for Beef, Sheep and Swine will be medals. 1st—Gold; 2nd—Silver; 3rd—Bronze.

CENTRAL WASHINGTON JUNIOR LIVESTOCK SHOW AWARDS

Future Farmers of America Awards

Grand Champion Beef Award
Trophy and Ribbon

Grand Champion Lamb Award
Trophy and Ribbon

Grand Champion Swine Award
Trophy and Ribbon

4-H Awards

Grand Champion Lamb Award
Trophy and Ribbon

Grand Champion Swine Award
Trophy and Ribbon

Grand Champion Beef Award
Trophy and Ribbon

MEDALS FOR FITTING AND SHOWING CONTESTS

Champion Beef Showman

1st Gold Medal
2nd Silver Medal
3rd Bronze Medal

Champion Lamb Showman

1st Gold Medal
2nd Silver Medal
3rd Bronze Medal

Champion Swine Showman

1st Gold Medal
2nd Silver Medal
3rd Bronze Medal

Champion Beef Showman

1st Gold Medal
2nd Silver Medal
3rd Bronze Medal

Champion Lamb Showman

1st Gold Medal
2nd Silver Medal
3rd Bronze Medal

Champion Swine Showman

1st Gold Medal
2nd Silver Medal
3rd Bronze Medal

CLASSIFICATION RIBBONS

Blue Ribbons for Hi-Choice
Beef, Lamb, Swine

Red Ribbons for Choice
Beef, Lamb, Swine

White Ribbons for Good
Beef, Lamb, Swine

Blue Ribbons for Hi-Choice
Beef, Lamb, Swine

Red Ribbons for Choice
Beef, Lamb, Swine

White Ribbons for Good
Beef, Lamb, Swine

JUDGING CONTESTS

Pennants will be awarded to the five highest scoring teams in both the F.F.A. and 4-H departments.

As we go to press . . . the Toppenish Chamber of Commerce, and the Toppenish Rodeo and Livestock Association wish to thank the following firms and individuals for their financial support of this great Junior Livestock Show:

Alfalfa Grange
Ace of Clubs, Toppenish
Merritt Allen, Toppenish

I. C. Benz, Toppenish
Fred Beezley, Toppenish
Bob's Grocery, Toppenish
Fern J. Beaulaurier, Toppenish
Ezra E. Benz, Toppenish
Bailey's Market, Toppenish
Joe Bouchey, Toppenish
Paul Benz, Toppenish
Ralph Beals, Toppenish
Brown's Bi-Rite Drug, Toppenish
Ben Franklin Store, Toppenish

Jack Collins, Toppenish
D. E. (Pat) Clyde, Toppenish
Campbell's Grocery, Toppenish
City Tire Service, Toppenish
Harry Culver, Goldendale
City Electric & Plumbing, Toppenish
Cecil's Radio Shop, Toppenish
Conrad's Dept. Store, Toppenish

Date Street Grocery, Toppenish
P. A. Denstad, Toppenish
Harry Donaldson, Yakima
Days Electric, Toppenish
Curt Davis Real Estate, Toppenish

E & H Motors, Toppenish

Jack Faucher, Toppenish
Fairview Feed Co., Yakima
Martin Forry, Goldendale

J. W. Golob, Sunnyside

Wilfred C. Hall, Toppenish
W. J. Havener, Toppenish
Guy P. Harris, Yakima
Ronald Halverson, Toppenish
Guy Hibbs, Toppenish
Haugan's Dept. Store, Toppenish

Intervalley Equipment Co., Toppenish

Ed Jarman, Toppenish
Johnson's Motel, Toppenish
June's Specialty Shop, Toppenish

Kirk's Tire Shop, Toppenish
Waldo Kline, Goldendale
Kennedy's Blacksmith & Welding, Top.
Harold Kock, Wapato
Kraff's Men's Wear, Toppenish

Jack Labbee, Harrah
Leidy's Cafe, Toppenish
F. A. Lienhard, Toppenish
J. S. Livingston, Toppenish
Logan's Reservation Mill, Wapato

Joseph C. Murphy, Toppenish
Morefield's Drug, Toppenish
Martel Drug, Toppenish
J. R. McDonald, Toppenish
Norman F. McDonald, Toppenish
Roscoe Maddox, Toppenish

Parkerway Grocery, Toppenish
Patterson Hardware Co., Toppenish

Frank A. Riches, Buena
Galen F. Ramsay, Toppenish
Laurent Regimbal, Toppenish
John H. Reiter, Harrah
Reservation Market, Toppenish

J. Ford Smith, Toppenish
Kenneth Scott, Toppenish
David Scott, Toppenish
Kimball Schmella, Toppenish
N. R. Sylvester, Yakima
Fred Stoops & Sons, Toppenish
Seattle First Nat'l. Bank, Toppenish
Seattle Packing Co., Seattle
Smith-Stanton Real Estate & Ins., Top.

H. J. Trudeau, Wapato
Henry Thalheimer, Toppenish
E. J. Tweed, Toppenish
Toppenish Chapter FFA, Toppenish
Toppenish Sales Yard, Toppenish
Toppenish Ice & Cold Storage, Toppenish
The Specialty Welding Shop, Toppenish
Taylor Bros. Garage, Toppenish
Lyman Taft, Toppenish

Toppenish Feed Co., Toppenish
The Flower Garden, Toppenish
Toppenish Hotel, Toppenish
The Club, Toppenish
The Mint, Toppenish
The Crescent, Toppenish

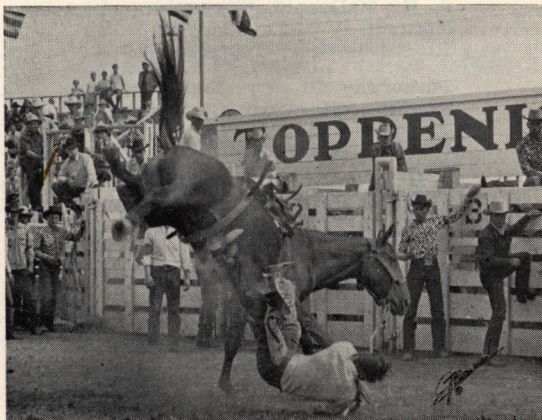
Lloyd Wicks, Toppenish
Carl Weisbrod, Zillah
Webb Tractor & Equipment Co., Top.

Yakima City Creamery, Yakima
Bert Young, Yakima

DON'T MISS THE 28th ANNUAL

Toppenish Pow Wow

July 2 - 3 - 4



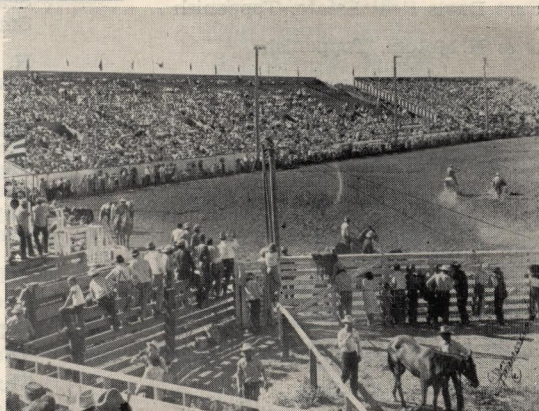
**SIX
WORLD
CHAMPIONSHIP
RODEO
EVENTS**

**THREE NIGHTS
UNDER LIGHTS**

CARNIVAL

PARADE

F.F.A.—4-H CALF SCRAMBLE



**For Reservations, Write
TOPPENISH RODEO & LIVESTOCK ASS'N.
TOPPENISH, WASHINGTON**