



# MEL'S

*At Neah Bay*

FOR

A Slice of  
the World's Best Salmon Fishing

**Mel's Sport Fishing Resort**

Box 130, Neah Bay, Wn.

72 Miles West of Port Angeles

—We Recommend Highway 9A

# MEL'S

LOCATED ON THE  
MAKAH INDIAN RESERVATION,  
THE EXTREME NORTHWESTERN CORNER  
OF THE UNITED STATES.

Here fishing for Salmon is at its Best, the big King or Chinook Salmon being taken from early Spring until often into September. Silvers or Coho Salmon from the middle of the summer into late Fall. In abundance are Halibut and Red Snapper and several species of Cod and Bass. Fishing may extend over a large area with choice of several hot spot. You'll find yourself fishing along with the commercial fleet.

For those who do not care to fish, there are various ocean beaches and several points of interest reached by hiking, including a trail to the most northwesterly corner of the United States, which affords a magnificent view of Tatoosh Island and the Coast line. Beachcombing for Japanese net floats is a pleasant pass time on a little visited beach. Scenery abounding.

You will enjoy the native Makah Indian Village where Salmon bakes on the beach are frequently seen. Also, visit the commercial fish-buying houses.

Mel's Resort is located directly on the water with an excellent beach for children's play.

Lodge open all year. Boats available Feb. 1 to Oct.

## ALL ROADS LEAD TO MEL'S



*Olympic Peninsula, Wash.*



# CHARTER BOAT THE MARLENE

38 Foot DeLuxe Cruiser

Diesel Powered

Three single and two double bunks. Galley fully equipped, head, dinette and large fishing deck. Radio-telephone equipped. Provide **YOUR OWN** bedding and food, including enough for your skipper.

All tackle furnished.

Charterer pays for any bait used and loss of any tackle supplied.

Your skipper is a licensed operator-guide.

## RATES:

Minimum—Four persons or less . . . . .	\$60.00
Five persons . . . . .	70.00
Six persons . . . . .	80.00
Seven persons . . . . .	90.00

## What constitutes a Day:

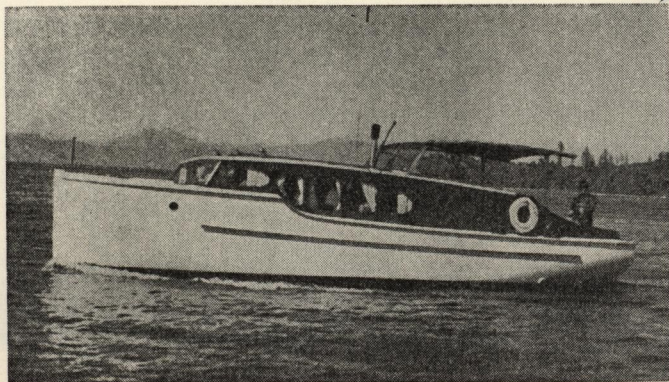
1. A legal limit of Salmon for each person in the party  
OR
2. An eight-hour day, dock to dock.

All overtime at charterer's request . . . \$10.00 per hour

Full rate charged for minors.

Free storage of your fish.

## The 38-Foot YACHT MARLENE



Explore and Fish the innumerable coves forming shores where the Strait of Juan de Fuca joins the Pacific.



## CHARTER BOAT THE ARMEL

26 Foot Chris Craft Cruiser

Bring picnic lunches, no cooking facilities aboard. Two bunks, head, and dinette. No sleeping aboard at night. It is advisable to stay at the Lodge or Motel as most trips leave early in the morning.

Your skipper is a licensed operator-guide.  
Radio-telephone equipped.

All tackle furnished—

Charterer pays for any bait used and for loss of any tackle supplied.

### RATES:

Minimum Charge—Four Persons or less—\$50.00

No more than a party of four will be taken.

### What constitutes a Day:

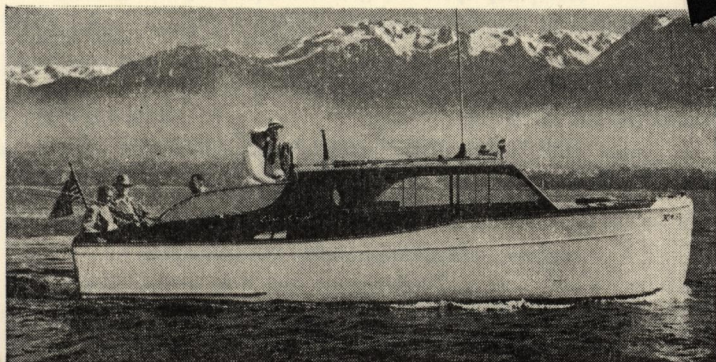
1. A legal limit of Salmon for each person in party  
OR
2. An eight-hour day, dock to dock.

Overtime at Charterer's request—\$10.00 per hour.

Full rate charged for minors.

Free storage of your fish.

## The 26-Foot Chris Craft CRUISER ARMEL



You will enjoy Sport Fishing at its best  
from this trim Cruiser.



## DELUXE MOTEL

Complete in every way for housekeeping; linens, towels, dishes and cooking utensils all furnished; gas heat and ranges; refrigerators; each unit has one Simmons Hide-a-bed.

2 people—single unit with Hide-a-bed . . . . .	\$ 8.00
2 people—1 bedroom . . . . .	10.00
3 people—1 bedroom with Hide-a-bed . . . . .	11.00
4 people—1 bedroom with Hide-a-bed . . . . .	12.00
4 people—2 bedrooms . . . . .	14.00
5-6 people—2 bedrooms and Hide-a-bed . . . . .	15.00

Trailer court — community shower facilities.

16-FOOT INBOARDS (fuel furnished) . . . . . \$7.00 per day

14 and 16-FOOT OUTBOARD BOATS  
(you furnish motor) . . . . . \$3.50 per day

Complete line of Tackle, Bait and Gasoline

Fish Storage

Novelties and Souvenirs

### Rental Tackle:

Complete pole . . . . .		Pole, Line and Reel . . . \$1.50
with lure . . . . . \$2.00		Nets . . . . . 25c
Pole . . . . . \$1.00		Gaff Hooks . . . . . 15c

Deposit required, charges will be made for losses.

### Cafes and General Store Nearby

Facilities for shipping, canning and smoking fish.

### Anything & Everything for the Fisherman

"If we can't meet your needs—they can't be met"

## LODGE ACCOMMODATIONS

Single Rooms . . . . . \$3.50 per day

Double Rooms . . . . . 4.50 per day

Twin beds . . . . . 6.00 per day

Bunks, usually four to a room—Your own private room—\$2.00  
per bunk, per day, for those used.

### HELP CATCH THE BIG ONES

### IN THE LOBBY EACH EVENING

Deposit required on all reservations.

For further information write—

### MEL'S SPORT FISHING RESORT

Box 130, Neah Bay, Washington  
or Telephone, Neah Bay 2091

MEL RAY—Owner operator.

Additional Free souvenir folders for mailing  
upon request.





*I'm Writing From  
Mel's at Neah Bay*

(Use This Space For Message)

FROM

\_\_\_\_\_

\_\_\_\_\_

3¢

POSTAGE  
REQUIRED

TO

\_\_\_\_\_

\_\_\_\_\_

\_\_\_\_\_