



Official U. S. Air Force Photograph

Aerial view on February 28, 1957,
of the construction site activities.

PRIEST RAPIDS DEVELOPMENT

Progress Report • 1st Quarter 1957

Prepared by

HARZA ENGINEERING COMPANY

Construction Engineer for

GRANT COUNTY PUBLIC UTILITY DISTRICT No. 2

HARZA ENGINEERING COMPANY
CONSULTING ENGINEERS

DAILY NEWS BUILDING
400 WEST MADISON STREET
CHICAGO 6, ILLINOIS

CALVIN V. DAVIS
PRESIDENT

CABLE ADDRESS "HARZENG CHICAGO"
TELEPHONE RANDOLPH 6-3451

April 12, 1957

COLUMBIA RIVER - PRIEST RAPIDS
HYDROELECTRIC PRODUCTION SYSTEM

Quarterly Progress Report

During the First Quarter of 1957, the extreme winter weather ended. The second half of the period had a gradual warming trend which allowed an increase in the construction tempo. Earnings of the contractor, Merritt-Chapman & Scott Corporation, totalled \$3,400,000 and brought his overall progress to 11% as of March 31, 1957. The contractor's performance and progress has continued to be very satisfactory.

Work continued on the contractor's construction plant and facilities. The erection of the concrete plant and appurtenant structures was well advanced; the first concrete is scheduled to be poured in late April. The temporary bridge over the Columbia River was near completion. It is expected to be ready for initial traffic in April.

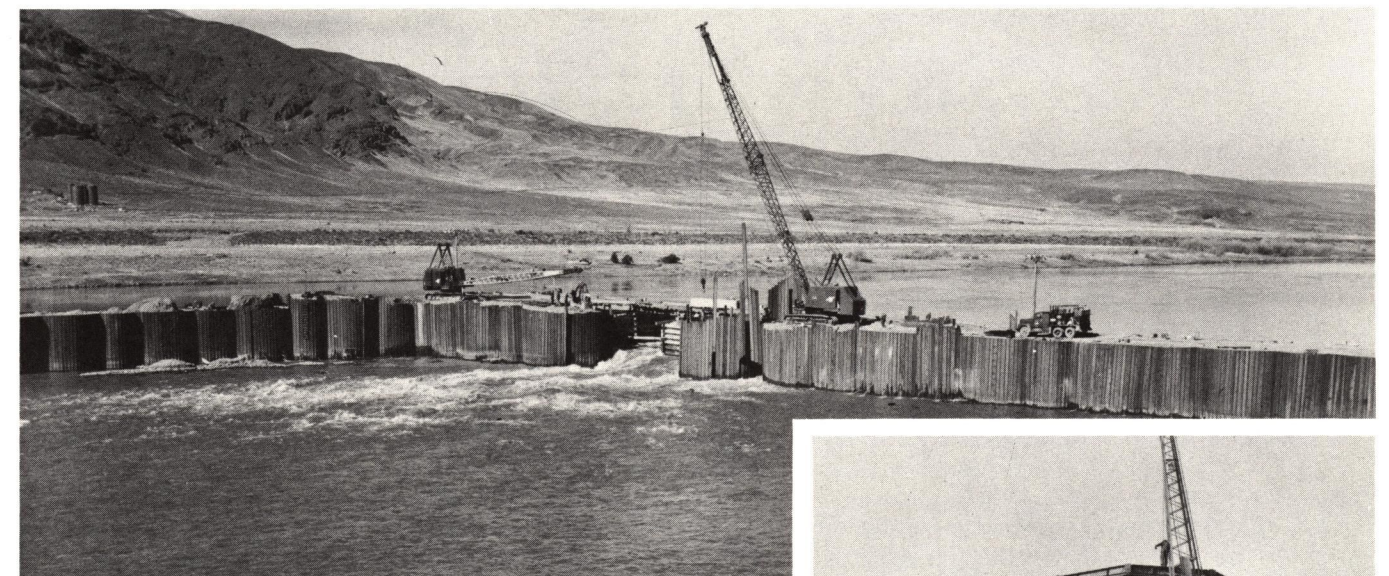
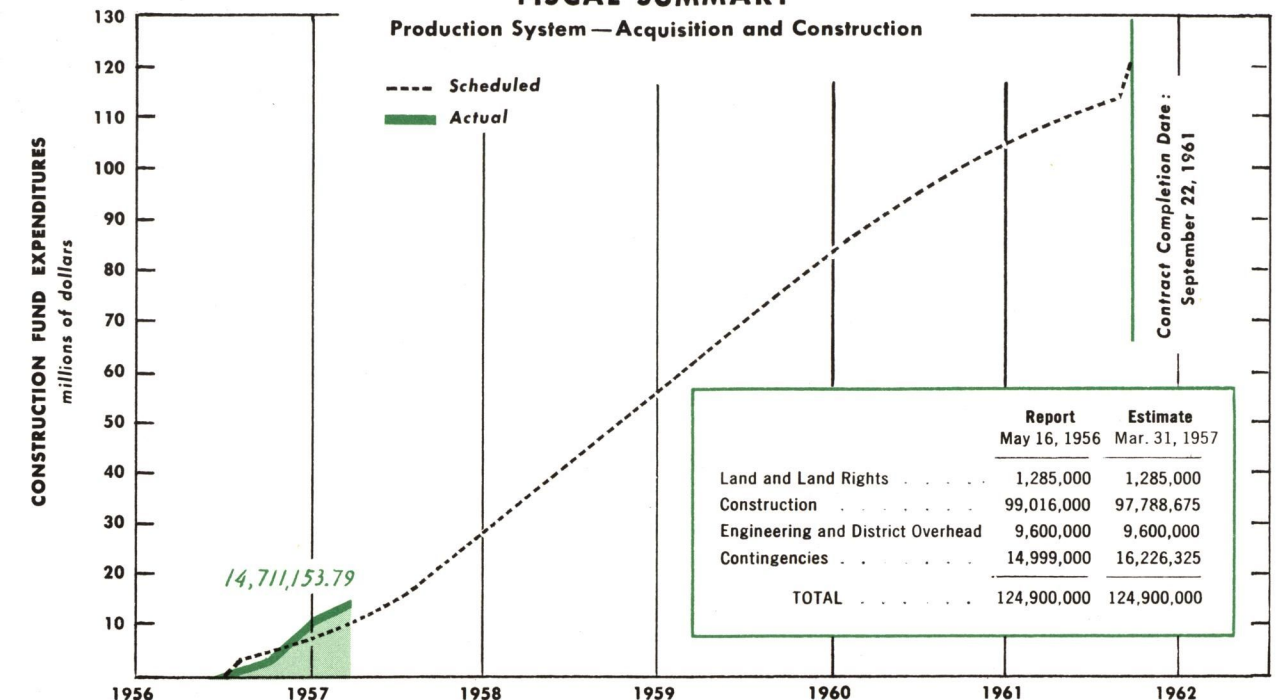
The powerhouse cofferdam was completed, and the initial spillway cofferdam was virtually completed at period's end. Foundation grouting was well advanced in all work areas.

The left embankment and powerhouse excavation continued at an excellent rate. At end of quarter the excavation totalled 1,100,000 and 400,000 cubic yards for the embankment and powerhouse, respectively. Engineering was accelerated during the period. Bid data on the pumps for fish passing facilities were released with bid opening scheduled for April. Remaining District-furnished equipment items are scheduled for bidding at a later date.

Calvin V. Davis
Calvin V. Davis
President

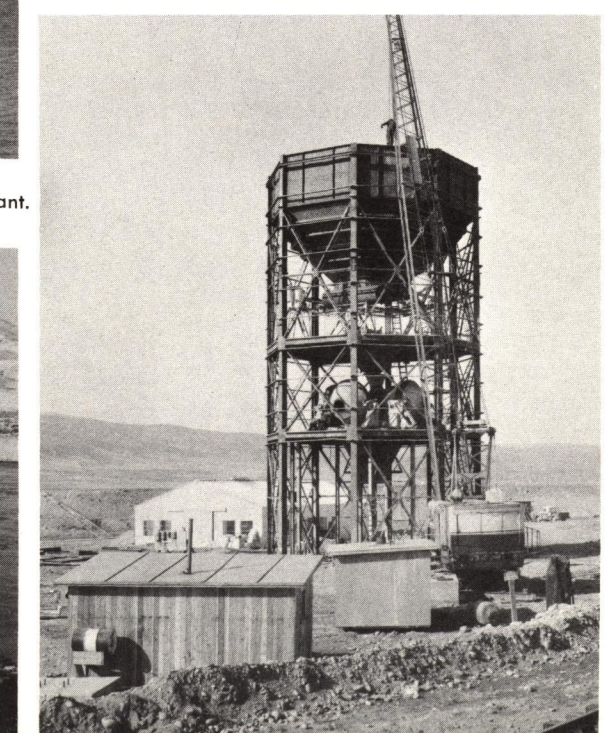
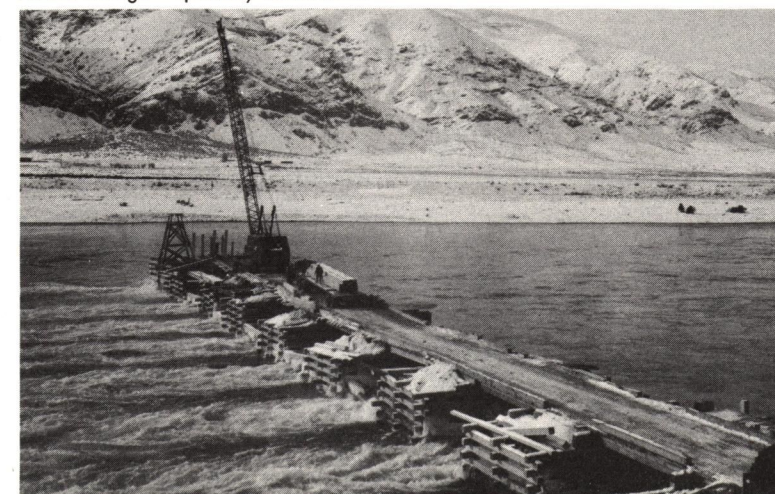
FISCAL SUMMARY

Production System—Acquisition and Construction

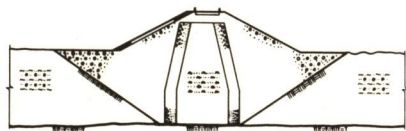


Closure cell—upstream leg of spillway cofferdam.

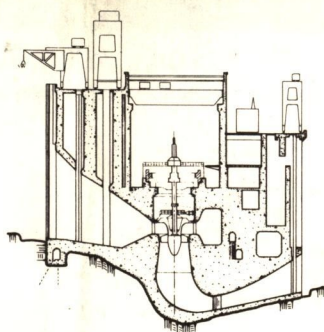
Work bridge—spillway cofferdam.



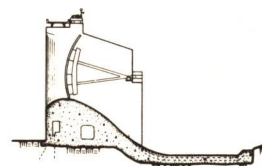
Erecting concrete mixing plant.



EARTH EMBANKMENT



POWERHOUSE



SPILLWAY

CONSTRUCTION PROGRESS SUMMARY

AS OF MARCH 31, 1957

 SCHEDULED  FINISHED

Access and Construction Plant

Cofferdams — River Diversion

Excavation

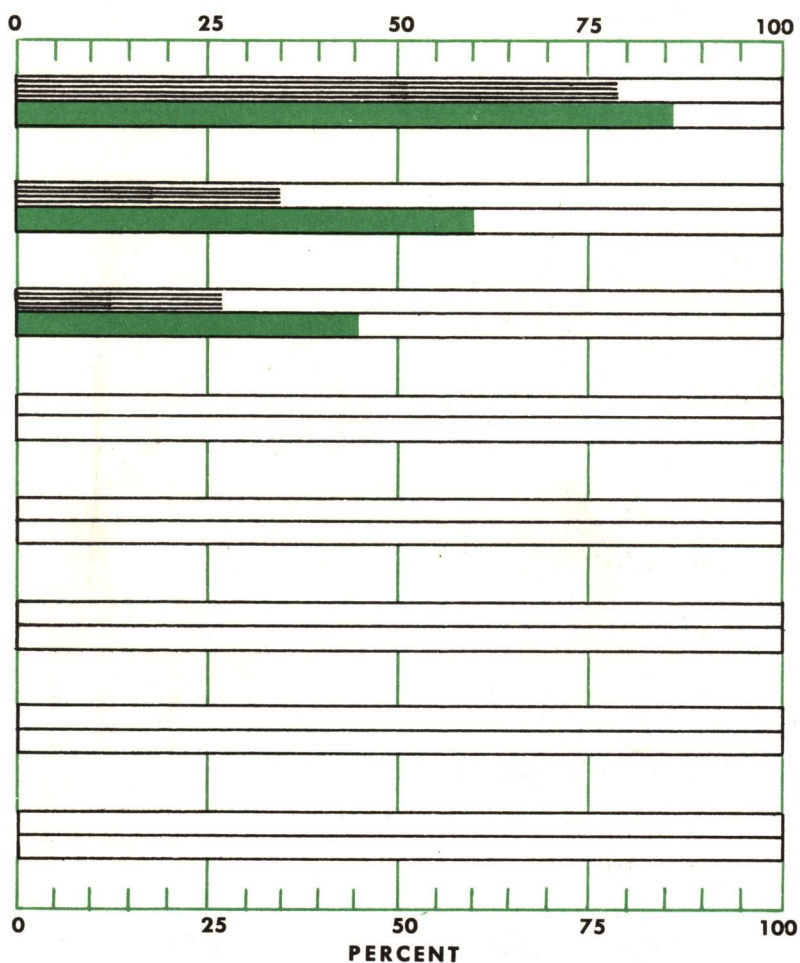
Embankment

Concrete Dam and Spillway

Powerhouse

Turbines and Generator — Manufacture

Turbines and Generator — Installation



POWER GENERATION



unit 1



unit 2



unit 3



unit 4



unit 5



unit 6



unit 7



unit 8