

Alaska Highway

CANADIAN SECTION



CANADIAN GOVERNMENT TRAVEL BUREAU

Ottawa, Canada, 1952

Information Bulletin No. 4

INDEX



ALASKA HIGHWAY - CANADIAN SECTION

The Alaska Highway (Canadian Section) commences at Dawson Creek, British Columbia, (Mile 0.0) and enters Alaska at Mile 1221. Dawson Creek is the western terminus of a branch of the Northern Alberta Railways, and is also served by the provincial highway systems of Alberta and British Columbia. It is approximately 495 miles by railway, and 475 miles by highway (shortest route) from Edmonton. Approximate mileages from ports of entry at the International Boundary to Dawson Creek are as follows:- Kingsgate, British Columbia, to Dawson Creek (via Cranbrook, Macleod and Calgary), 994 miles; Coutts, Alberta, to Dawson Creek, 870 miles.

The Alaska Highway through Canada was commenced in March, 1942, as a military highway and was completed in 1943. Its total length from Dawson Creek, B.C., to Fairbanks, Alaska, is 1,523 miles, of which 1,221 miles are in Canada and 302 miles in Alaska. It has a gravelled all-weather surface from Dawson Creek through British Columbia and the Yukon Territory to the Yukon-Alaska boundary and is open to travel throughout the year.

TRAVEL REGULATIONS

United States citizens passing through Canada to Alaska do not require passports and, as a general rule, if in good health, will experience no difficulty or delay at the border. They should, however, possess personal identification. There is no maximum limit to the amount of cash a visitor may have in his possession for personal use but all individuals, when crossing the border into Canada, will be required to satisfy the Canadian Customs officer that they have sufficient funds available for the completion of the journey, as well as for any emergency which may arise.

Persons entering Canada with the intention of establishing a permanent home should apply to the Director of Immigration, Department of Citizenship and Immigration, Ottawa, Canada, for information concerning immigration requirements.

SPECIAL ENTRY REGULATIONS

The shortest distance by highway between Alaska and any part of the Continental United States is at least 2,500 miles. While the section of road between Edmonton and Dawson Creek, as well as the Alaska highway proper, have been greatly improved since the highway was built and most hazards of the journey have been eliminated, it is, nevertheless a long and arduous journey.

Previous restrictions have, to a large extent, been lifted, and the Customs office has established the following regulations for the protection of the motorist;

- 1) Every individual entering Canada either from Alaska or from any part of the United States and intending to drive over the Alaska

Highway should have in his possession at time of entry into Canada a sufficient sum of money for the trip, or should be able to prove to the satisfaction of the frontier officers that he can obtain in Canada any additional funds which he might require. The total mileage to be driven from the point of entry to the point of exit will provide some idea of the number of days that the traveller will be in Canada and the type of vehicle, i.e. ordinary car, truck, trailer, etc., will indicate the quantity of gas and oil required for the trip. In the same way, the number of people in the party multiplied by the number of days and the average daily expenditure for food and lodging will provide a very good indication of the total normal expenditure. A reasonable sum should also be included in the estimate for repairs or in case of accident, because the trip is of a somewhat hazardous nature.

2) Motor cars in poor condition, and older models such as those constructed prior to 1940, will not be handled on Form E 50, but on Form 50B - Commercial Vehicle Permit, with either a cash deposit or guarantee bond for export.

Similar action will be taken with respect to other travellers where the amount of money and, or equipment carried appears to be inadequate to meet the requirements of the proposed journey.

3) As light automobiles cannot handle house trailers over 20 feet in length over this route, entry of such trailers may be refused if, in the opinion of the Collector, the vehicle used for tractive purposes is not sufficient for the task. All units which include a trailer as part of the equipment will be entered on Form E. 50B, with cash or guarantee bond for export.

4) Any vehicle used to carry household effects, tools of trade, or any items of merchandise, except normal baggage, must be entered on Form E 50B with cash deposit or guarantee bond for export. **GUARANTEE BONDS ARE AVAILABLE AT THE PRINCIPAL PORTS OF ENTRY INTO CANADA.**

ADMISSION OF TOURIST EQUIPMENT AND BAGGAGE

The admission of sporting rifles and shotguns into Canada is permitted. These must be registered immediately with the provincial police authorities. Fifty rounds of ammunition may be brought into Canada free of duty or deposit. Fully automatic weapons, pistols and revolvers are prohibited. Pistols or revolvers carried in transit through Canada to Alaska are admitted provided they are placed in a separate container and sealed at the border by the Customs Officer.

Before dogs or other pets are admitted they must be accompanied by a certificate, signed by a veterinary inspector of the United States Bureau of Animal Industry, or by a licensed veterinarian of the State of origin, certifying that the animal is free of any contagious disease; also, in the case of a dog, that it has not been exposed to rabies within a period of six months of the date of shipment, or has been vaccinated against rabies within the same period.

Personal belongings, settlers' effects, sporting and camping equipment, radios, musical instruments, still and movie cameras with a reasonable amount of film (but not exceeding six rolls), typewriters for personal use, 50 cigars, 200 cigarettes, two pounds of manufactured tobacco, small

amounts of perishable goods such as one or two day's food supply, and gasoline and oil sufficient for 300 miles of travel, may be brought into Canada free of duty or deposit. Larger quantities of goods or materials must be transported "in bond" - that is, under seal from the United States - Canada border to the Canada - Alaska border. It would be more advantageous from a Customs standpoint if trucks carrying goods "in bond" are admitted for passage across Canada only through the Customs ports at Coutts, Alberta; Kingsgate, B.C.; Pleasant Camp, B.C. (Haines Road); and Snag, Y.T.

PROVINCIAL APPROACH ROADS

The principal approach road through Alberta is paved from Coutts on the Montana border to 50 miles north of Edmonton. From there it is gravelled to Dawson Creek and, except when unusual weather prevails, is maintained in good condition in all seasons. A recently built bridge over the Smoky River eliminates the ferry crossing. Daily road reports may be obtained from the Director, Alberta Government Travel Bureau, Legislative Building, Edmonton.

LOADING AND CLEARANCE REGULATIONS

- (a) Unrestricted gross weight, 15 tons.
- (b) Special multiple axle or trailer type maximum gross, 21.5 tons.
- (c) Maximum axle load, 12 tons.
- (d) Axle spacing, 14 feet.
- (e) Maximum vertical clearance, 14 feet.
- (f) Width (empty or loaded) 102 inches.



WEATHER CONDITIONS

The weather in that region of Canada has a great influence on travelling conditions along the Alaska Highway. The following summary will give a general idea of the seasonal conditions:-

December - January - February

During these months the highway is generally good and the hard-packed snow provides smooth driving. Zero weather prevails at that time of the year, and precautions should be taken to have the necessary clothing for protection against such weather. Automobiles should be completely winterized and tire chains carried. During the past few years the heaviest snow-storm (31 inches) was recorded during the month of January at Snag.

March - April - May - June

Ice conditions are encountered during the month of March due to melting snows. Throughout the months of April, May and early June the highway is usually poor due to spring thaws, and maintenance crews are active repairing it for summer travel. If a motorist should decide to travel during this period, he is advised to drive cautiously and to carry tire chains, tow-rope, pick and shovel.

June - July - August - September

These months are the most favourable for automobile travel. The days are warm, with cool evenings. The road is well graded, although the long dry spells tend to make it dusty. It is suggested that the motorist travelling at this time equip his automobile with two extra tires (preferably 6 ply), as well as bringing the necessary basic set of car tools.

October - November

During October and November rain, light snow-storms and frosts cause slipperiness. Travellers should acquaint themselves with highway conditions. This information is usually posted at telephone repeater stations or highway maintenance camps en route. Chains, a pail of sand, pick and shovel should be carried.

* * *

The Haines Road, connecting the port of Haines, Alaska, with the Alaska Highway at a point approximately 95 miles west of Whitehorse, Yukon Territory, is open to traffic during the summer months only.

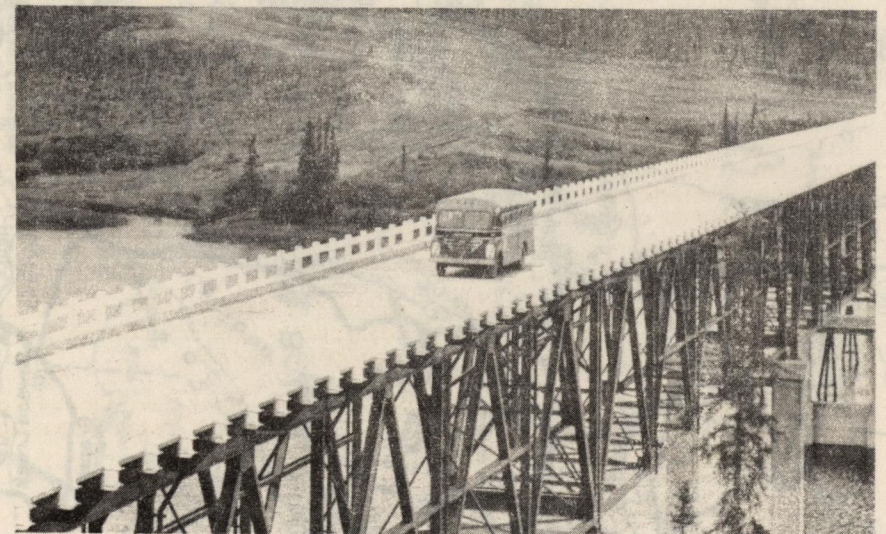
Elsewhere in this booklet will be found a chart showing average monthly maximum and minimum temperatures along the Canadian section of the highway.

TELEPHONE AND TELEGRAPH SERVICES

The Northwest Communication System, operated by Canadian National Telegraphs, provides facilities for public long distance telephone and commercial telegraph services at repeater stations and offices at centres listed together with the roadside facilities. In addition, the Northwest Communication System connects with other agencies such as Alaska Communication System for exchange of telephone and telegraph messages with Alaska and with Dominion Government Telegraphs and Royal Canadian Corps of Signals for exchange of telegraph messages with areas of Northwest Canada and with all agencies at Edmonton for telephone and telegraph messages to or from any destination. The Northwest Communication System also has interchange arrangements with Department of Transport facilities serving aerodromes at Fort St. John, Beatton River, Fort Nelson, Smith River, Watson Lake, Teslin, Whitehorse, Aishihik, and Snag.

BUS SERVICES

Buses are operated on the Alaska Highway between Dawson Creek and Dry Creek by the British Yukon Navigation Company, and from there to Fairbanks by the Alaska Coachways. The latter company also operates services into Anchorage, Alaska, in conjunction with its Alaska Highway run. Information concerning bus schedules and fares may be obtained from the General Passenger Agent, White Pass and Yukon Route, P.O. Box 1846, Seattle 11, Washington, and Alaska Coachways at Fairbanks, Alaska.





ADMINISTRATION OF NATURAL RESOURCES

As the Alaska Highway traverses parts of British Columbia, Yukon Territory, and the Territory of Alaska, the administration of the natural resources along the highway falls within the jurisdiction of the various governments concerned.

Disposal of public lands in British Columbia is under provincial jurisdiction. Information may be obtained from the British Columbia Government representative at Pouce Coupe, B.C., or from the Department of Lands and Forests, Victoria, B.C.

Territorial lands in Yukon Territory may be disposed of by sale, lease, or licence of occupation. Applications for land privileges should be made to the Commissioner of Yukon Territory at Dawson, or to the Agents of Dominion Lands at Whitehorse or Mayo, Y.T., from whom application forms and additional information may be obtained.

PROSPECTING AND MINING

Any person over 18 years of age has the right, with certain reservations, to prospect and mine upon lands in Yukon Territory where the right to mine minerals has not been alienated from the Crown. The fee for recording a claim is \$10. Copies of the Yukon Quartz and Placer Mining Acts and other mining regulations may be obtained on application to the Commissioner of Yukon Territory, or the Lands Division, Northern Administration and Lands Branch, Department of Resources and Development, Ottawa, Canada. Information concerning mineral regulations for that section of the Alaska Highway situated within British Columbia may be obtained from the Department of Mines, Victoria, B.C.

Information concerning natural resources along the highway in Alaska may be obtained from the United States Department of the Interior, Juneau, Alaska.

BUSINESS OPPORTUNITIES

Persons planning to operate tourist camps, service stations, or other concessions along the Alaska Highway in Canada, are reminded that the tourist business, particularly in this area, is a seasonal occupation. It is, therefore, apparent that any such venture should be augmented by some other source of income. For additional information concerning business opportunities or licences in Yukon Territory, application should be made to the Commissioner of Yukon Territory at Dawson, or the Territorial Agent at Whitehorse, Y.T.

Similar information concerning business opportunities on sites in British Columbia may be obtained from the Department of Trade and Industry, Victoria, B.C.

Persons planning to operate bus or trucking services over the Alaska Highway will be required to comply with provincial and territorial regulations. For further information, application should be made to the Public Utility Commission, Department of Trade and Industry, Victoria, B.C., and to the Commissioner of Yukon Territory, Dawson, Y.T., or to

the Territorial Agent, Whitehorse, Y.T. Additional information concerning these services on the Alaska Highway in Alaska may be obtained from the Alaska Road Commission, Dept. of the Interior, Juneau, Alaska.

Motor vehicle operators desiring to become bonded carriers shall make application to the Department of National Revenue, Ottawa.

FISH AND GAME REGULATIONS

An angler's or sport fishing permit is required in Yukon Territory, and closed seasons must be observed. The fees for such permits are - Resident, \$1.00, Non-Resident, \$2.00. Copies of the fishing regulations for Yukon Territory may be obtained from the Department of Fisheries, Ottawa, Canada.

The Yukon Game Ordinance provides that no person shall hunt, trap, injure, kill, shoot at, or molest any wildlife within an area extending for a distance of one mile on each side of the centre of the Alaska Highway and the Haines Road. The discharge of any firearm in this area is prohibited, except in the protection of live stock and gardens from predatory animals and rodents. No person shall carry or have in his possession any loaded rifle or discharge any rifle within an area extending a distance of one mile on each side of the centre of the Whitehorse - Mayo Highway; no person shall carry or have in his possession any loaded shotgun or discharge any shotgun within an area extending a distance of one-half mile on each side of the centre of the Whitehorse - Mayo Highway. Hunting and trapping within Kluane and McArthur Game Sanctuaries is also prohibited. The privilege of hunting and trapping in Peel River Native Preserve is reserved exclusively to the native Indian, Eskimo and Half-breed population. Elsewhere hunting is permitted in season on payment of licence fees as follows:- Resident hunting licence - \$1.00; Non-resident big game hunting licence (Canadian citizen) - \$75, (Alien) - \$100; Non-resident game bird licence - \$5.00; Special bear hunting licence (Canadian citizen) - \$25, (Alien) - \$50. Full information concerning game regulations may be obtained from the Commissioner of Yukon Territory at Dawson, or the Director of Game and Publicity at Whitehorse, Y.T. Regulations governing fishing and hunting in British Columbia may be obtained from the Provincial Game Commissioner, 567 Burrard Street, Vancouver, B.C.

TOPOGRAPHICAL AND GEOLOGICAL MAPS

Topographical and geological maps of the British Columbia and Yukon Territory sections of the Alaska Highway may be obtained from the Surveys and Mapping Branch, Department of Mines and Technical Surveys, Ottawa. The cost is usually 25 cents per sheet for the topographical maps. Maps of the British Columbia section of the highway may also be obtained from the Department of Lands and Forests, Victoria, B.C.

GASOLINE, MEALS, ACCOMMODATIONS

The cost of gasoline on the Alaska Highway ranges from 47¢ at Dawson Creek to 68¢ at Cool River, B.C., the centre of the highway. From that point the price declines to 49¢ at Whitehorse and gradually increases again to 68¢ at Koidern Camp. This fluctuation of prices is caused by the

long haulage of this commodity from main distribution centres in Canada and Alaska. In Canada the Imperial gallon is 1/5th larger than the American gallon.

The prices of accommodations and food compare with those in the U.S. and main sections of Canada. In the smaller lodges a room may be obtained for \$2.00 per person per night, up to \$8.00 for a double room at the larger Inns and Hotels. Breakfast, lunch and dinner may be purchased at prices running from 75¢ to \$3.00.

Prices quoted above are the latest available, but may be subject to revision from time to time.

GENERAL INFORMATION

Requests for information concerning the section of the Alaska Highway in British Columbia should be addressed to the Department of Trade and Industry, Victoria, B.C., and for general information relating to Yukon Territory to the Commissioner of Yukon Territory, Dawson, Y.T. Information about travel on the Alaska Highway within Alaska may be obtained from the Alaska Road Commission, Department of the Interior, Juneau, Alaska.

ROADSIDE FACILITIES

A list of accommodations, campgrounds and roadside facilities along the highway will be found on the following pages. Travellers cannot expect assistance in matters of food and shelter or automotive repairs from Northwest Highway System maintenance camps.

The Canadian Government has prepared 11 free public campgrounds along the Alaska Highway in Yukon Territory. These campgrounds are intended for the convenience of travellers who carry their own food and supplies. Parking areas are convenient to cooking and kitchen shelters containing stoves and tables.



A note to Canadians. . .

who intend to travel on the Alaska Highway. Although the border regulations included in this booklet do not apply to Canadian citizens, you are advised to observe the precautionary measures designed to minimize the hazards of this long journey through unsettled country.

ACCOMMODATIONS AND ROADSIDE FACILITIES AVAILABLE
ON THE ALASKA HIGHWAY IN CANADA

<u>Mile</u>	<u>Location</u>	<u>Services and Facilities</u>	<u>Beds</u>	<u>Telephone And Telegraph Service</u>
0	<u>British Columbia</u> Dawson Creek	Acc.,Meals,Stores, Gas & Oil, repairs	150	Yes
16	Farmington	Post Office, Store, Gas & Oil		
35	Peace River Bridge	Acc., Meals	Ltd.	
36	Peace River Bridge	Meals, Minor Repairs		
49	Fort St. John	Acc.,Meals,Stores,Gas & Oil, Repairs	150	Yes
52	Charlie Lake	Meals,Gas & Oil, Minor Repairs		
101	Blueberry	Acc.,Meals,Gas & Oil	4	Yes
147	Beatton River	Acc.,Meals,Store,Gas & Oil, Repairs	30	
171	Mason Creek	Acc.,Meals,Gas & Oil, Repairs	4	
190	Crest	Acc.,Meals,Gas & Oil	10	
201	Trutch	Meals, Gas & Oil		Yes
233	Prophet River	Acc.,Meals,Stores,Gas & Oil	20	
300	Fort Nelson	Acc.,Meals,Store,Gas & Oil, Repairs	50	Yes
351	Steamboat Mtn.	Acc.,Meals,Gas & Oil	10	
392	Summit Lake	Acc.,Meals,Gas & Oil, Minor Repairs	12	Yes
397	Rky.Mt. Auto Ct.	Acc.,Meals,Store,Gas & Oil, Minor Repairs	10	
422	Toad River	Acc.,Meals,Store,Gas & Oil, Minor Repairs	10	
456	Muncho Lake	Meals, Gas & Oil		Yes
462	Brant at Muncho	Acc.,Meals,Store,Gas & Oil, Storage	18	
463	Muncho Lake	Acc.,Meals,Gas & Oil, Minor Repairs	10	
496	Liard River	Acc.,Meals,Store,Gas & Oil, Minor Repairs	12	Yes
533	Coal River	Acc.,Meals,Gas & Oil	10	Yes
543	Coal River	Acc.,Meals,Gas & Oil	5	Yes
620	Lower Post	Acc.,Meals,Store,Gas & Oil	40	Yes
	<u>Yukon Territory</u>			
632	Watson Lake	Campground		
634	Watson Lake	Acc.,Meals,Store,Gas & Oil	40	Yes
643	Upper Liard River	Acc.,Meals,Gas & Oil, Major Repairs		
710	Rancheria	Acc.,Meals,Gas & Oil, Campground	10	
733	Swift River	Acc.,Meals,Store,Gas & Oil	20	Yes
777	Morley River	Campground		
777.7	Morley River	Acc.,Meals,Gas & Oil	Ltd.	
804	Teslin	Acc.,Meals,Store,Gas & Oil	15	Yes
813	Teslin Lake	Acc.,Meals,Campground	6	
829	Brook's Brook			Yes
837	Teslin River	Acc.,Meals,Gas & Oil	20	

ACCOMMODATIONS AND ROADSIDE FACILITIES AVAILABLE
ON THE ALASKA HIGHWAY IN CANADA (Cont'd)

<u>Mile</u>	<u>Location</u>	<u>Services and Facilities</u>	<u>Beds</u>	<u>Telephone And Telegraph Service</u>
	<u>Yukon Territory (Cont'd)</u>			
843	Little Teslin L.	Acc.,Meals, Gas & Oil	Ltd.	
849	T.C.,	Tourist Campground		
872	Judas Creek	Acc.,Meals, Gas & Oil, Campground	Ltd.	
883	Marsh Lake	Acc., Meals, Gas & Oil	30	Yes
918	Whitehorse	Acc., Meals, Stores, Repairs	300	Yes
967	Mendenhall Creek	Campground		
974	Champagne	Store		
987	Cracker Creek	Acc., Meals, Gas & Oil		
996	Canyon Creek	Acc., Meals, Gas & Oil	10	Yes
1013	Pine Creek	Campground	10	Yes
1016	Haines Junction	Acc., Meals, Store, Gas & Oil	15	
1022	Bear Creek	Acc., Meals	4	
1054	Kluane Lake	Acc., Meals, Gas & Oil	12	
1083	Destruction Bay	Acc., Meals, Gas & Oil		Yes
1093	Burwash Landing	Acc., Meals, Store, Gas & Oil, Repairs	40	Yes
1095	Airport Lodge,	Acc., Meals, Gas & Oil	15	Yes
1105	Burwash Flats	Campground		
1152	Lake Creek	Campground		
1167	Koidern			Yes
1184	Cry Creek	Acc., Meals, Gas & Oil	20	Yes
1200.4	Beaver Creek	Store, Gas & Oil, Towing Service		Yes
1210	Sourdough Inn	Acc., Meals	6	
1213	Mirror Creek	Campground		
1220	Y. T.	Canadian Immigration & Customs, Meals		Yes
1221	Canada-Alaska Boundary			



AVERAGE MONTHLY MAXIMUM AND MINIMUM TEMPERATURES

- indicates below Zero

	FORT ST. JOHN				BEATON RIVER				FORT NELSON				SMITH RIVER				WATSON LAKE				TESLIN				WHITEHORSE				AISHIHIK				SNAG			
JAN	31	-39	26	-45	28	-44	22	-56	18	-57	29	-45	29	-49	33	-50	24	-64																		
FEB	36	-26	34	-28	29	-34	28	-44	30	-45	33	-37	32	-41	28	-46	27	-62																		
MAR	43	-26	45	-29	51	-28	44	-39	43	-37	42	-25	42	-26	41	-36	44	-39																		
APR	59	9	56	3	62	5	54	0	54	4	48	7	50	8	45	-8	54	-13																		
MAY	73	39	70	34	72	39	67	34	66	31	62	32	64	35	63	30	64	32																		
JUNE	82	34	81	31	85	34	82	26	85	33	84	30	84	32	82	30	85	30																		
JULY	84	42	86	30	88	41	85	33	88	40	83	35	84	38	79	34	82	35																		
AUG	84	35	81	31	83	33	81	26	73	39	79	32	80	32	78	28	80	26																		
SEPT	81	26	78	25	84	25	75	21	76	28	75	25	72	24	70	19	74	17																		
OCT	59	5	51	-1	55	8	51	-4	52	3	48	5	47	2	46	1	48	-15																		
NOV	58	0	55	-10	50	-14	52	-24	47	-28	48	-15	49	-22	46	-30	36	-40																		
DEC	36	-30	28	-32	27	-41	24	-49	19	-46	28	-40	31	-35	31	-40	14	-48																		



TRAVEL INFORMATION

The Canadian Government Travel Bureau, a federal government organization, provides a free information service on travel to and within Canada.

The Bureau works in close co-operation with federal departments and with provincial and local tourist associations and information bureaux, and inquiries are regularly referred to those sources so that full information shall be supplied.

In order that inquirers may obtain all available data, including the full benefit of unpublished information, they are urged to state their needs definitely, and in detail and, if possible, name the particular section of the country they are interested in. Inquiries should be directed to the Canadian Government Travel Bureau, Ottawa, Canada.

Provincial Bureaux

The following provincial tourist bureaux can give information on their respective provinces.

NEWFOUNDLAND -- Tourist Development Office, St. John's.

PRINCE EDWARD ISLAND -- Prince Edward Island Travel Bureau, Charlottetown.

NOVA SCOTIA -- Bureau of Information, Halifax.

NEW BRUNSWICK -- New Brunswick Travel Bureau, Fredericton.

QUEBEC -- Province of Quebec Tourist Bureau, Quebec City.

ONTARIO -- Department of Travel and Publicity, Parliament Buildings, Toronto.

MANITOBA -- Bureau of Travel and Publicity, Winnipeg.

SASKATCHEWAN -- Saskatchewan Tourist Bureau, Legislative Buildings, Regina.

ALBERTA -- Alberta Travel Bureau, Legislative Building, Edmonton.

BRITISH COLUMBIA -- Government Travel Bureau, Victoria.

* * * *

YUKON AND NORTHWEST TERRITORIES -- Northern Administration and Lands Branch, Department of Resources and Development, Ottawa.

NATIONAL PARKS OF CANADA -- Canadian Government Travel Bureau, Ottawa.

* * * *

In addition there are numerous bureaux devoted more particularly to the promotion of tourist traffic to local points. Many of these also give general information respecting the tourist facilities of the province in which they are situated.

* * * *

CANADA



Vacations Unlimited

Printed in Canada