

empire  
builder

.....







*The Sun Room—Empire Builder.*



*Observation Lounge, Empire Builder.*

## Westward Ho!

**N**OW, as an ambassador of good will, the Empire Builder represents the fruition of years of constructive study of railroading in the Northwest—anticipating and providing for the likes and dislikes, the needs, comforts and conveniences of the people and the country it serves.

In crossing the continent on this superb train it is in the observation car that memories are made; where you enjoy to the utmost an unobstructed view of Nature's beauties in all her variants of color, form and fancy; where you find ample evidence of Great Northern hospitality and service.

On the Empire Builder a sun room, furnished with gayly upholstered wicker chairs, replaces the conventional observation platform and sets a new note in travel appointment.





*Here many happy hours are spent.*



*The writing desk occupies a secluded corner.*

It opens directly into a richly furnished observation lounge, where the keynote of the charm of the Empire Builder is set in the simplicity and directness of its architecture and color treatments. Warm tan is the predominant color tone of the walls, with contrasting window frames and panels of carved walnut and decorations and lighting fixtures of old gold. In this setting, the rich, bright colors in the upholstered chairs, settees and couches, with small console and end tables with parchment shaded reading lamps, give a new and attractive atmosphere to the most distinctive room in the train.

At the forward end of the room a friendly writing desk invites your confidences. Here also is the library with a supply of current magazines and travel-books, descriptive of the country thru which you are traveling.

It is in this setting that one is served four o'clock tea, a most tempting and pleasant institution, served daily as an expression of courtesy and hospitality by the dining car steward.





*Club Lounge—Empire Builder.*



*A radio-phonograph provides entertainment.*

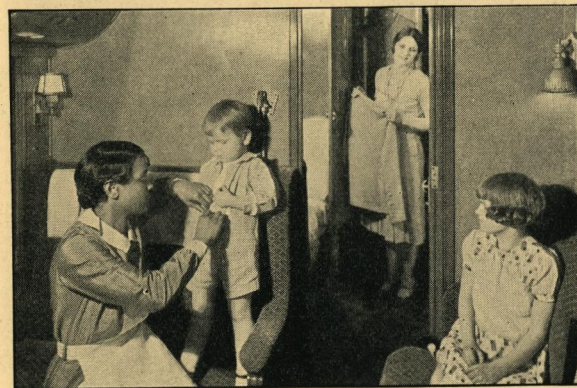
**T**YPICALLY Tudor in design and masculine in every detail, with paneled walls of walnut and candelabrum side lights shedding their friendly glow, the Club Lounge of the Empire Builder provides that atmosphere of solid comfort and ease so characteristic of the metropolitan club. Here travelers may play cards in sections provided for that purpose, chat, listen in on the latest stock market reports, sport news, or programs of general interest, for a radio-phonograph is part of the thoughtful planning evidenced everywhere in this train.

In connection with this lounge we find a perfectly equipped buffet, while in adjoining rooms are shower baths for men and for women and a compact but thoroughly modern barber shop under the charge of a white barber.





*Pullman Car—Empire Builder.*



*Compartment-Drawing Room Suite.*

THE sleeping cars on this famous train are longer, heavier and of all-steel construction which insure smooth and easy riding and largely eliminate vibration. In the berths, resilient, deep-coiled springs, permanent headboards, a new type light, and individual heat and ventilation control are but a few of the improvements that appeal particularly to the transcontinental traveler.

Drawing rooms and compartments are so arranged that they may be occupied either singly or en suite, while the wash rooms are spacious and perfectly appointed—the ladies' rooms with mirrors, revolving boudoir chairs and dressing tables; the men's with soft leather upholstered settees that provide a suitable place to smoke and chat during the waking hours.





*Dining Car—Empire Builder.*



*The menus offer many choice delicacies.*

**R**EALIZING that the enjoyment of a meal is not alone dependent upon excellent, well prepared food, every effort has been put forth to provide an atmosphere of charm and hospitality. Add to a deliciously cooked meal, a perfectly appointed table with its snow white linen, crystal clear glassware, bright silver and dainty patterned china; the quick, attentive service of waiters under the supervision of a genial steward as host, and you have a harmonious setting for a perfect meal.

The dining cars on the Empire Builder were designed especially for the transcontinental traveler. They are decorated to harmonize with the other cars of the train and seat thirty-six people.

Kitchen and pantry are extra large and the latest developments in refrigeration and lockers assure fresh, well-kept food. A glance into these sections suggests the tempting meals to





*Tables, perfectly appointed.*

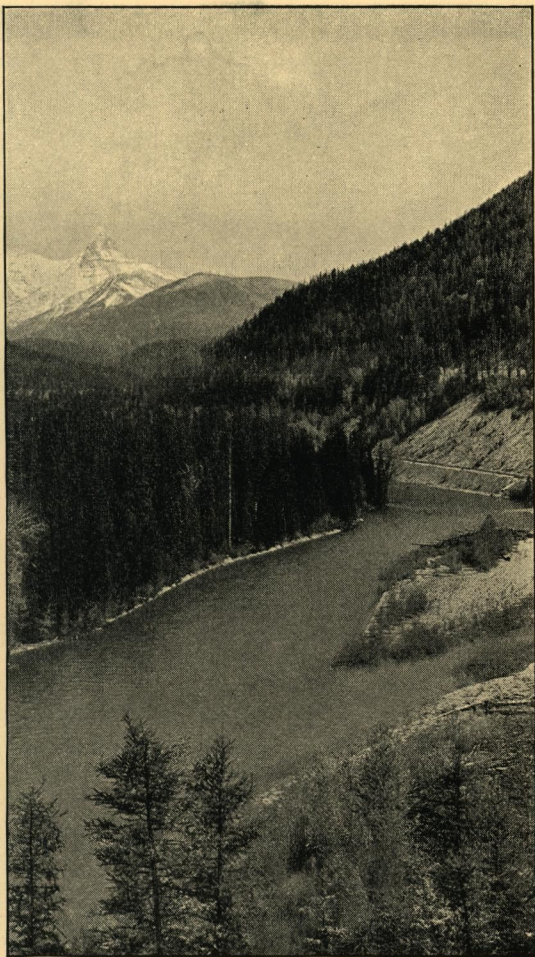


*The kitchens suggest the tempting meals to come.*

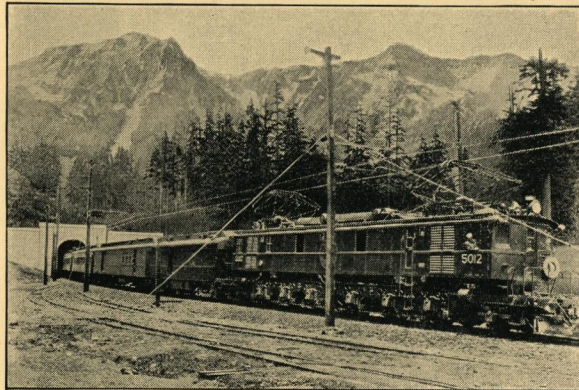
come and reveals a well-stocked commissary and immaculate facilities for cooking and serving. There are special dormitory quarters in the forward part of the train for the crew, thus the diner is used exclusively for the preparation and serving of meals.

Patrons have their choice of either a la carte or table d'hote meals at reasonable prices and parents can order special dishes for their children. The menus feature seasonable delicacies from the evergreen Pacific Northwest; fresh fruits, vegetables and appetizing sea foods from Washington and Oregon, prize-winning Minnesota butter, North Dakota beef, Montana and Idaho potatoes and other products of the rich agricultural territory served by the Great Northern Railway.





*For sixty day-light miles along Glacier Park.*

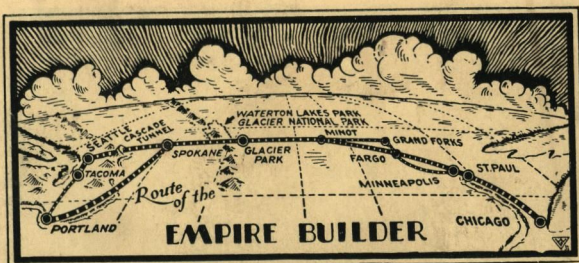


*The Cascade Tunnel—longest in the Western Hemisphere.*

**N**O SECTION of America is more worthy of the attention of the traveler because of its historic background, its charming cities, the beauty and diversity of its scenery, and, above all, because of the facilities, which have been provided in it for the comfort of the train traveler, than that served by the Great Northern Railway's superb train, the Empire Builder.

Then, too, a fleet of passenger locomotives, second to none in all the world, provide an abundance of power so that you who travel may glide easily and smoothly over rock-ballasted and oiled roadbeds, around gradual curves and up gentle grades, on extra heavy steel rails and steel and concrete bridges, through concrete tunnels, your safety secured by automatic block signals all the way, reaching your destination with a sense of well-being from travel glorified.





### Great Northern Travel Headquarters

BELLINGHAM, WASH.	- - - - -	212 Kulshan Bldg.
BILLINGS, MONT.	- - - - -	311 Electric Bldg.
BOSTON, MASS.	- - - - -	Shop 3, Little Bldg.
BUFFALO, N. Y.	- - - - -	683 Ellicott Square
BUTTE, MONT.	- - - - -	513 Metals Bank Bldg.
CHICAGO, ILL.	- - - - -	113 So. Clark St.
CINCINNATI, OHIO	- - - - -	608 Traction Bldg.
CLEVELAND, OHIO	- - - - -	507 Hippodrome Bldg.
DALLAS, TEX.	- - - - -	1004 Southwestern Life Bldg.
DES MOINES, IOWA	- - - - -	305 Equitable Bldg.
DETROIT, MICH.	- - - - -	Main Floor, Transportation Bldg.
DULUTH, MINN.	- - - - -	422 W. Superior St.
EVERETT, WASH.	- - - - -	Great Northern Station.
FARGO, N. D.	- - - - -	603 First Nat. Bank Bldg.
GRAND FORKS, N. D.	- - - - -	Great Northern Station.
GREAT FALLS, MONT.	- - - - -	802 First National Bank Bldg.
HELENA, MONT.	- - - - -	510 Power Bldg. and Placer Hotel.
KANSAS CITY, MO.	- - - - -	516 Railway Exchange Bldg.
KLAMATH FALLS, ORE.	- - - - -	Slater Bldg.
LEWISTOWN, MONT.	- - - - -	Great Northern Station.
LOS ANGELES, CAL.	- - - - -	605 Central Bldg.
MILWAUKEE, WIS.	- - - - -	502 Majestic Bldg.
MINNEAPOLIS, MINN.	- - - - -	640 Marquette Ave.
MINOT, N. D.	- - - - -	Great Northern Station.
NEW YORK, N. Y.	- - - - -	595 Fifth Ave. at 48th St.
NELSON, B. C.	- - - - -	421 Baker St.
OMAHA, NEB.	- - - - -	720 First National Bank Bldg.
PHILADELPHIA, PA.	- - - - -	504 Finance Bldg.
PITTSBURGH, PA.	- - - - -	206 Oliver Bldg.
PORTLAND, ORE.	- - - - -	201 Morgan Bldg.
ST. LOUIS, MO.	- - - - -	520 Boatmen's Bank Bldg.
ST. PAUL, MINN.	- - - - -	4th and Jackson Sts.
SAN FRANCISCO, CAL.	- - - - -	679 Market St.
SEATTLE, WASH.	- - - - -	1400 Fourth Ave. at Union St.
SIOUX CITY, IOWA	- - - - -	516 Nebraska St.
SIOUX FALLS, S. D.	- - - - -	503 East 8th St.
SPOKANE, WASH.	- - - - -	Davenport Hotel.
SUPERIOR, WIS.	- - - - -	1213 Tower Ave.
TACOMA, WASH.	- - - - -	116 So. 9th St.
TORONTO, ONT.	- - - - -	507 Royal Bank Bldg.
VANCOUVER, B. C.	- - - - -	681 Granville St.
VANCOUVER, WASH.	- - - - -	Great Northern Station.
VICTORIA, B. C.	- - - - -	916 Government St.
WENATCHEE, WASH.	- - - - -	203 Wenatchee Sav. & Loan Bank.
WINNIPEG, MAN.	- - - - -	226 Portage Ave.
A. J. Dickinson, Passenger Traffic Manager, St. Paul, Minn.		