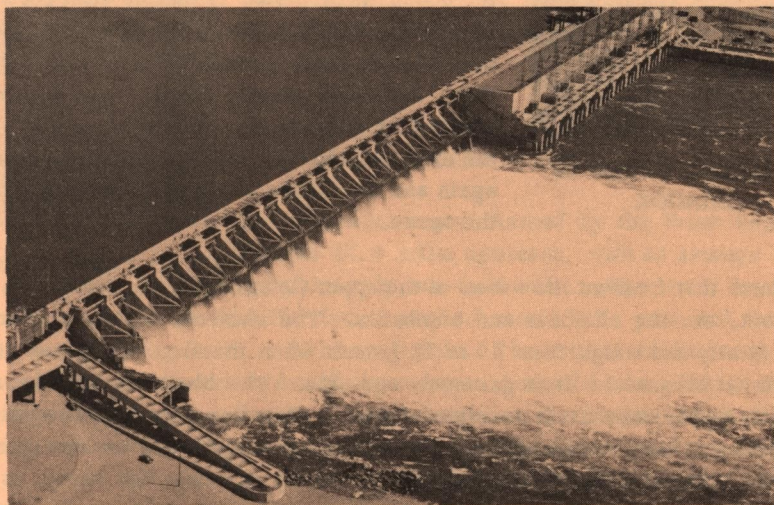


PRIEST RAPIDS PROJECT

FISH AND RECREATION



PRIEST RAPIDS DAM
Columbia River
Grant County, Washington

PUBLIC UTILITY DISTRICT OF GRANT COUNTY
EHRATA, WASHINGTON

THE SALMON AND THE STEELHEAD TROUT



COMMERCIAL CATCH OF
CHINOOK

The Columbia River is inhabited by many kinds (species) of fish, some of which are prized highly by the commercial and sports fishermen. The two most important of these are the salmon and the steelhead trout.

The salmon and steelhead collectively are known as anadromous fish, since they spend part of their lives in the streams and part in the ocean. The young fish hatch from the eggs deposited by their parents in the gravel beds of the streams. After hatching they spend from one to two years in the fresh water and then migrate to the ocean for a period of marine residence of two to four years. While in the ocean they make over 95 percent of their entire growth and upon attaining maturity they, like their parents, return to spawn in the streams where they originated. The adult salmon invariably die after they spawn, but the steelhead live to spawn again and may make as many as three trips to and from the ocean.

The salmon that frequent the waters of the upper Columbia River, along with the steelhead trout, are the chinooks and bluebacks. The chinooks are the monarchs of the salmon family and weigh from 10 to 75 pounds when mature. They are often called King salmon because of their gameness and size. The bluebacks are the smallest of the family and seldom attain a weight of greater than five pounds. The steelhead are intermediate in size, weighing from five to twenty pounds, and are one of the gamest fish in the streams of the western slope. A variety of these fish known as Kamloops have been caught in the lakes of the Northwest weighing up to 50 pounds.

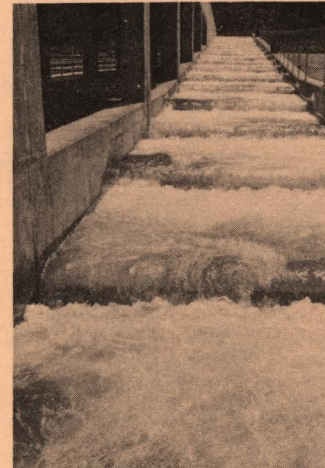
The Columbia River chinooks feed in the off-shore waters along the coast from northern California to southeastern Alaska. They are caught by commercial and sports fishermen throughout this entire range. They are also caught in the river by the nets of the commercial fishermen and the tackle of the sports fishermen.

The bluebacks are caught mainly in the river by the nets of the commercial fishermen.

The steelhead are caught mainly in fresh water but will strike a lure in the salt water estuaries of the coastal streams. In the State of Washington they are limited to the sports fishery and are not permitted to be sold commercially.

In view of the valuable commercial fishery and highly prized sports fishery for both the salmon and steelhead the State and Federal conservation agencies are vitally interested in protecting these fish during their spawning migrations in the streams.

DAMS AND FISH PROTECTION



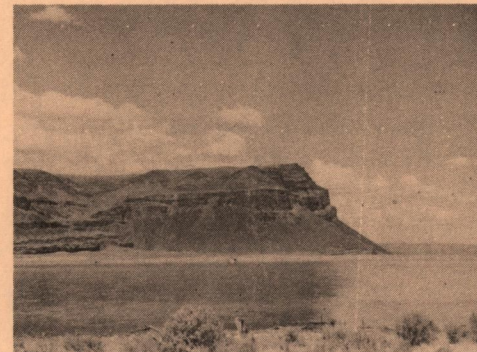
PRIEST RAPIDS FISH LADDER

The Public Utility District of Grant County has completed Priest Rapids Dam on the Columbia River at the foot of Priest Rapids and is in the process of building Wanapum Dam, about 18 miles upstream. Both of these dams include fish ladders and other facilities that provide for the safe passage of the salmon and steelhead over them. These facilities have been planned according to the recommendations of the conservation agencies and incorporate the latest design for the efficient passage of the fish.

RECREATIONAL POTENTIAL OF THE RESERVOIRS ABOVE THE DAMS

The reservoir or pool formed by the Priest Rapids Dam extends 17.8 miles upstream, with an average width of approximately one-half mile. The water level in the reservoir will not vary more than five feet throughout most of the year and the current through it, except during floods, will be negligible. The natural conditions in the pool after a short period of adjustment should approximate those of a lake. This is especially true of a large grassy area covered by the pool known as the Moran Slough into which flowed many cold water springs. A contract between the District and the State Game

Department provides for the stocking of Priest Rapids pool with 150,000 legal sized Kamloops trout each year over a five year period. These trout are less migratory in habit than the steelhead and tend to remain in the fresh water where they mature and provide excellent sports fishing.



ON PRIEST RAPIDS RESERVOIR

The Wanapum Dam reservoir will extend upstream 38.2 miles, and will average a little less than one-half mile in width. From a point about ten miles above the

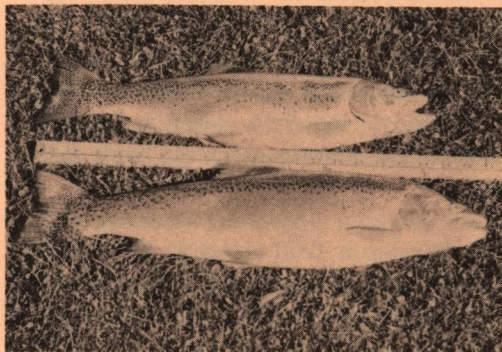


A RENDEZVOUS OF THE
ELLENSBURG BOAT CLUB
ON THE COLUMBIA RIVER

(Courtesy Dale Wells)

dam it will extend through a steep and narrow winding canyon. The water level in the reservoir will not vary more than ten feet throughout most of the year and the current in it will be considerably less than in the natural river. There will be a number of broad shallow areas in the pool where the current will be imperceptible and where the natural conditions will in time approximate those of a lake. The District's contract with the Game Department also includes the stocking of the Wanapum pool with 150,000 legal sized Kamloops each year over a five year period.

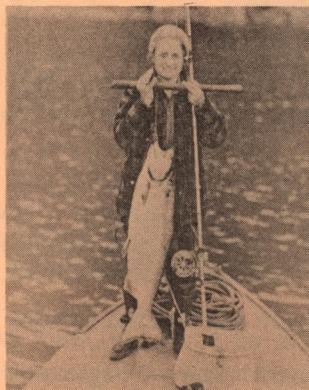
The comparatively small fluctuation in the level of these reservoirs and their slowly moving waters will provide favorable conditions for boating, water skiing and swimming. Heavy wave action common to many large reservoirs will not be a factor on the Wanapum reservoir except during very heavy winds. The narrow and winding course of the pool tends to serve as a protection for boating and water skiing enthusiasts.



KAMLOOPS TROUT

C
H
I
N
O
O
K
S
A
L
M
O
N

20 pounder



There are a number of potential recreational areas along the shores of both reservoirs. Some of these may be developed by State and Federal agencies and others by Port Districts, private interests and boat clubs. In time, both reservoirs will become a Mecca for those who enjoy recreation in and along the shores of clear and refreshing waters.