

Form 1.

THE WESTERN UNION TELEGRAPH COMPANY.

24,000 OFFICES IN AMERICA.

INCORPORATED

CABLE SERVICE TO ALL THE WORLD.

This Company TRANSMITS and DELIVERS messages only on conditions limiting its liability, which have been assented to by the sender of the following message. Errors can be guarded against only by repeating a message back to the sending station for comparison, and the Company will not hold itself liable for errors or delays in transmission or delivery of Unrepeated Messages, beyond the amount of tolls paid thereon, nor in any case where the claim is not presented in writing within sixty days after the message is filed with the Company for transmission.

This is an UNREPEATED MESSAGE, and is delivered by request of the sender, under the conditions named above.

ROBERT C. CLOWRY, President and General Manager.

NUMBER

SENT BY

REC'D BY

CHECK

RECEIVED at

190

Dated

To

Mother died at home this evening. Also
immediately if you intend to stay there or
come home so we can arrange accordingly.

Ernest.

SEE OTHER SIDE FOR TELEGRAM

The Western Union Telegraph Company

THE LARGEST TELEGRAPHIC
SYSTEM IN THE WORLD.
OVER ONE MILLION MILES
OF WIRE IN THE UNITED STATES
AND CANADA.

It has over 24,000 Telegraph
Offices, including Branch Offices.

It has also Direct Connection
by Telegraph or Telephone with as
many more remote and smaller
stations, making a total list of
over 50,000 in the United States,
Canada and Mexico, and this num-
ber is rapidly increasing.

Seven Atlantic Cables,

Connecting North America with all points
in Europe and beyond, including Two
Cables of the American Telegraph and
Cable Company, Four Cables of the Anglo-
American Telegraph Company, and One
Cable of the Direct United States Cable Co.

Direct Wires to Galveston, Texas, con-
necting at that place with the Cables of the
Mexican, the Central and South American
Telegraph Companies for all points in
Mexico and Central and South America.

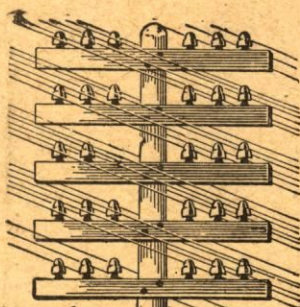
Direct Wires and Cables to Havana,
Cuba, connecting at that place with the
Cuba Submarine and West India and Pan-
ama Telegraph Companies for all points
in the West Indies.

Connects at San Francisco with Pacific
Cables to the Sandwich Islands, Honolulu,
Guam, the Philippines, China, Japan, etc.,
and at Victoria, B. C., with Pacific Cable
to Australia and New Zealand.

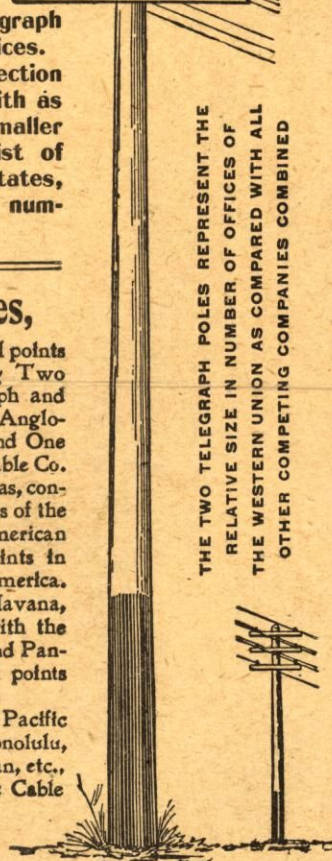
Connects at Seattle, Wash.,
with U. S. Government Lines
and Cables to and in Alaska.

Exclusive connection with the Great
North-Western Telegraph Co. of Canada.

Domestic and Foreign Money Orders by Telegraph and Cable



THE TWO TELEGRAPH POLES REPRESENT THE
RELATIVE SIZE IN NUMBER OF OFFICES OF
THE WESTERN UNION AS COMPARED WITH ALL
OTHER COMPETING COMPANIES COMBINED



W. U. T. CO.
24,634
OFFICES.

OTHER COS.
4,868
OFFICES.

SEE OTHER SIDE FOR TELEGRAM

FORM 116.

[Oct. 1910]

The Western Union Telegraph

INCORPORATED

CABLE SERVICE TO ALL PARTS OF THE WORLD.

Pay no Charges to Messenger unless written in Ink in Delivery



R. C. Schermer
City

No. _____

Charges _____

pd

NIGHT MESSAGES AT REDUCED RATES.

MONEY ORDERS BY TELEGRAPH.