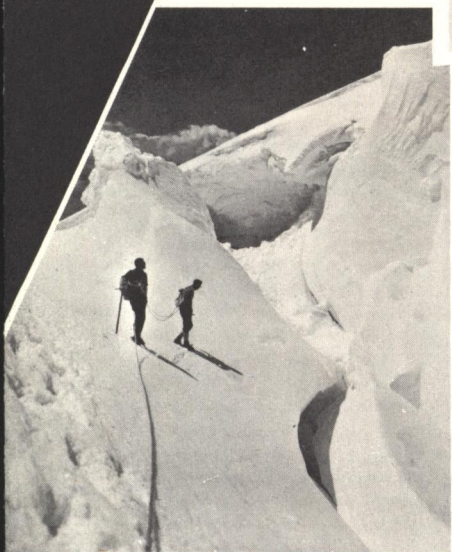


your convention
will be...

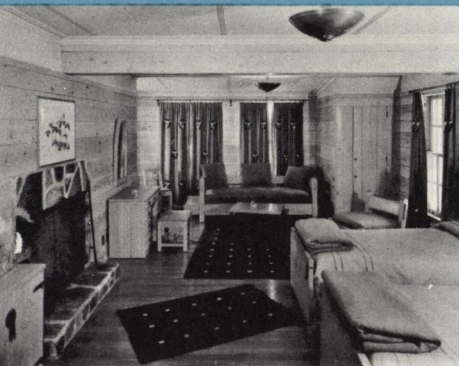
A
mOUNTAIN
OF
FUN



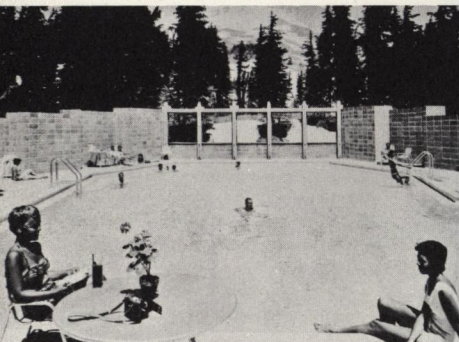
for conventions, sales meetings and planning
sessions, come up to

Timberline
LODGE

where you can get down to business!



At the end of your day you'll enjoy relaxing in front of your own fireplace. All rooms have individual Western decor.



The Crystal Pool is heated to 80° year 'round



The Lodge's Western decor is ideal for informal recreation, relaxation and social activities before and after meetings.

A mOUNTAIN OF FUN

a place to work a place to play

sleeping accommodations

The Lodge can house 100 people in colorful, private rooms with bath. The individually decorated rooms display native Northwest colors, designs and fabrics. If you want to use the dormitory facilities, the Lodge can give overnight lodging to 200 people.

eating accommodations

Excellent banquet facilities are available for as many as 200. Buffet-style banquets can be catered for groups up to 300. The quality of the food and service is superb. And you'll find complete bar service available from the Blue Ox and Ram's Head bars.

meeting accommodations

A variety of meeting rooms are available. Group meetings numbering between 5 and 45 can take advantage of the intimate *fire-place room*. There is a new conference room on the ground floor designed espe-



You might want to take a breathtaking excursion to the 10,000 ft. level via the amazing Timberline Sno-Cat.



Mt. Hood is a family-fun area with activities including skiing, sledding, fishing, hunting, golfing, riding and hiking.

cially for groups between 45 and 75 persons. This room will also accommodate up to 26 people in a "round table" discussion and 75 when set up in "classroom" style. Larger meetings and banquets can be held in the Ski Grill and Dining Room (seating from 75 to 200 persons). And, of course, smaller meetings may also be held in suites. For extra large groups you can reserve the entire Lodge.

free-time accommodations

Timberline really shines in this department. You can take a dip in the giant, heated swimming pool, ride the chair lifts or *Sno-Cats* (the latter are snow-going taxis that take skiers, guests and tourists to 10,000 feet on the mountain), zip down the mountain a few miles for a round of golf, take a pack trip, go fishing, or have a helping of "cheer" in either the Ram's Head or Blue Ox bars. Enjoy dancing in the main lounge . . . or just plain relax. And you can go skiing, too.



and what about costs?



This is another advantage of holding a convention at Timberline . . . there are no pre-determined prices because the cost depends entirely on what your group wants . . . and we prefer to satisfy the specific requirements of your program. You may want suites or dormitory? How about breakfast in bed? Elegant formal dinners? Buffet style meals? Golfing or fishing excursions? A special cocktail party at the pool? A keg of beer in the Blue Ox? Sno-Cat rides up the mountain? Live entertainment in the Lodge? *Whatever you want, we will provide!*

And you'll find that most conventions are "un-conventional" when they come to Timberline. Away from the disruptions of a downtown meeting, you'll find the Lodge has a very fine atmosphere for successful meetings with plenty of variety for recreation . . . all under one roof. You don't have to worry about one or two other conventions going on at the same time either. In fact, if your group is larger than 75, we can reserve the entire upper Lodge for you *exclusively*.

For more specific information on costs and to discuss what you want in the way of a convention, meeting, reception or banquet, call or write:

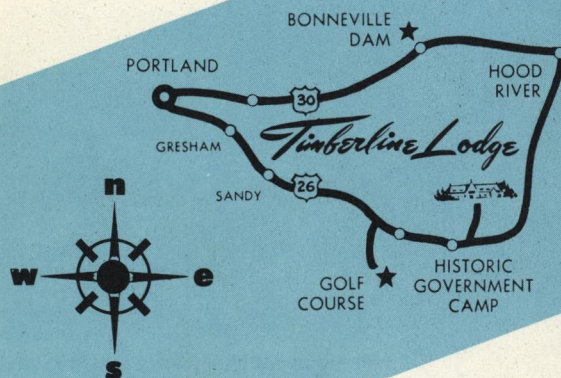
Timberline
LODGE

Transportation

Portland is easily accessible from neighboring states via Northwest, United, West Coast and Western Airlines; Great Northern, Southern Pacific and Union Pacific railroads; Greyhound and Trailways buses . . . and from Portland, Timberline is a mere 60 miles away. Trailways bus line serves the Lodge directly. For larger conventions we'll be happy to arrange transportation to and from the Lodge.

Mileage from Timberline Lodge to:

Portland, Ore.	60 miles via Highway 26
Pendleton, Ore.	206 miles via Highways 30 and 35
Seattle, Wash.	246 miles via Highways 99 and 26
Spokane, Wash.	359 miles via Highways 35, 30, and 410
San Francisco, Calif.	624 miles via Highways 97 and 26
Los Angeles, Calif.	943 miles via Highways 97 and 26



*For more information
or to make reservations,*

WRITE, WIRE or TELEPHONE (today!)

Tad Michel
Convention Manager

Government Camp, Oregon **CR 2-3200**
Portland, Oregon . . . **CA 6-7979**

Timberline
LODGE
Government Camp, Oregon