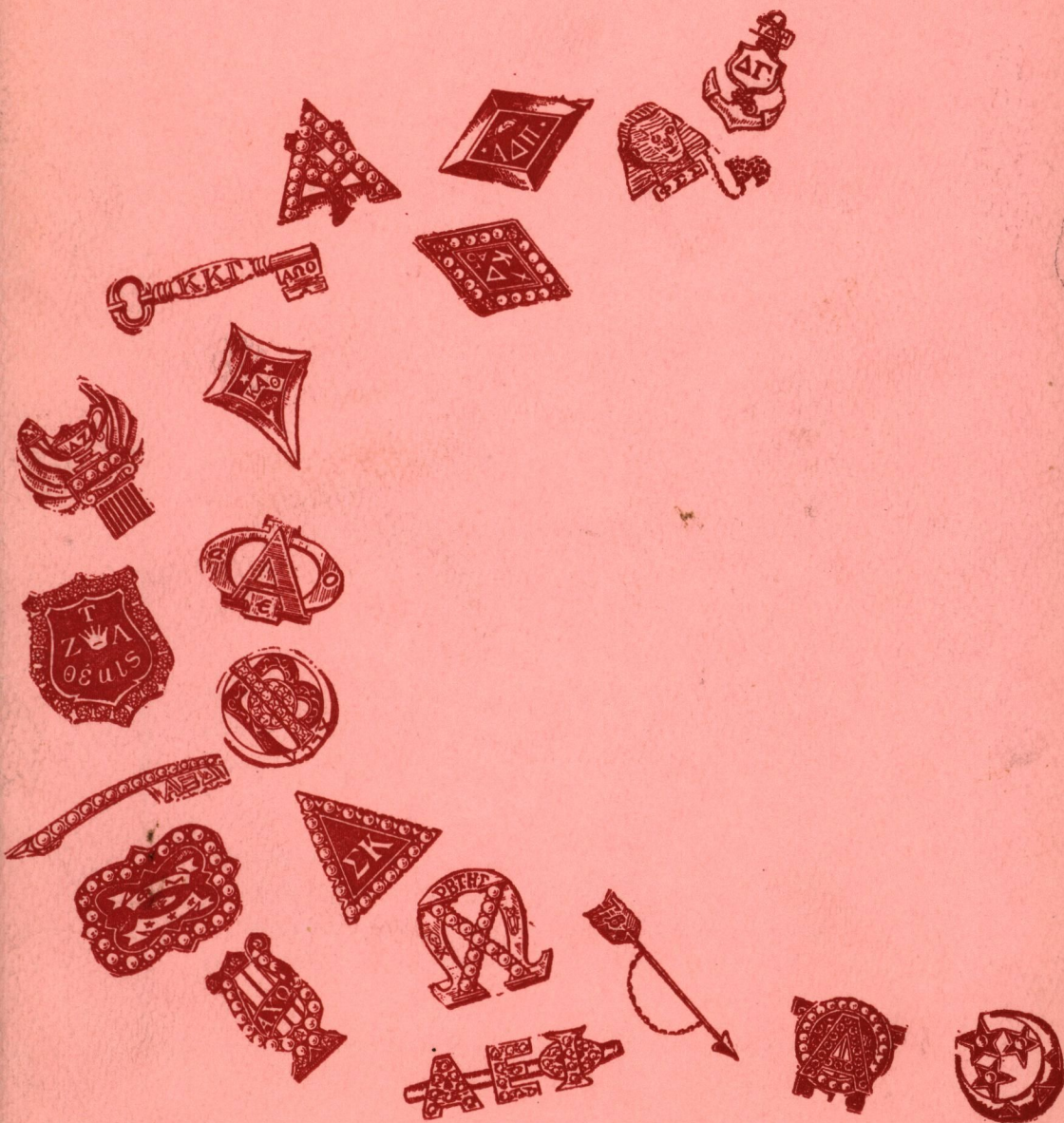


PANHELLENIC HANDBOOK

UNIVERSITY OF WASHINGTON
1958



THE PANHELLENIC CREED

We, the fraternity undergraduate members, stand for good scholarship, for guarding of good health, for wholehearted co-operation with our college's ideals for student life, for the maintenance of fine social standards, and for the serving, to the best of our ability, of our college community. Good college citizenship as a preparation for good citizenship in the larger world of alumnae days is the idea that shall guide our chapter activities.

We, the fraternity alumnae members, stand for an active, sympathetic interest in the life of our undergraduate sister, for loyal support of the ideals of our Alma Mater, for the encouragement of high scholarship, for the maintenance of healthful physical conditions in the chapter house and dormitory, and for using our influence to further the best standards for the education of the young women of America. Loyal service to chapter, college and community is the ideal that shall guide our fraternity activities.

We, the fraternity officers, stand for loyal and earnest work for the realization of these fraternity standards. Co-operation for the maintenance of fraternity life in harmony with its best possibilities is the ideal that shall guide our fraternity activities.

We, the fraternity women of America, stand for preparation for service through the character building inspired in the close contact and deep friendship of fraternity life. To us, fraternity life is not the enjoyment of special privileges but an opportunity to prepare for wide and wise service.

STANDING COMMITTEE CHAIRMEN

Activities Chairman.....Gail Seibel
Publicity Chairman.....Connie Kravitz
Scholarship Chairman.....Sandra Dahl
Social Chairman.....Gail Wilcox
Standards Chairman.....Priscilla Anderson

PANHELLENIC OFFICE

University of Washington Campus
LA. 4-6000, Ext. 2089, 2910
233 Student Union Building

OFFICE HOURS

June 16 through August 1—Week Days, 10-2:00 p.m.
August 4 through September 12—Week Days 10-3:00 p.m.
September 15 through 25—Daily, 8-5:00 p.m.

If these times are inconvenient—

Judy Gibb.....La. 2-5648

Nola Mickelson.....La. 2-8218

may be contacted in the evenings or on weekends until September 14.

PANHELLENIC HANDBOOK

UNIVERSITY OF WASHINGTON

September, 1958

TABLE OF CONTENTS

President's Message	4
Panhellenic Association	5
Introducing Panhellenic	6
Why Pledge A Sorority	6, 7
Eligibility for Rushing	7, 8
Registration for Rushing	8
Where to Stay During Rush	9
Your University Appointments	10
Yes, There Is Expense	11
Your Rushing Calendar	12
Calling for Your Dates	13
What to Wear, When	16
What Constitutes Illegal Rushing	17, 18, 19
Open Rush	19
Panhellenic Pledging Rules	19
Map of Sorority Locations	20
Greek Row	21
Greek Alphabet	28

Edited by

HEATHER WILLIAMS

PRESIDENT'S MESSAGE

Welcome to the University of Washington — and Rushing!

As our 1958 Rushing period draws nearer it is natural for you to have many questions: What are the advantages of sorority life? How much will it cost? What shall I wear to Rushing parties? What is illegal rushing? This Handbook has been prepared as an answer to these and many other questions.

Rushing is a very new and exciting part of your college life. It also involves an important decision on your part, for you are looking for a group of friends with whom you will share pleasures, responsibilities and friendships for many years to come.



JUDY GIBB
President

To assure that you will be happy with your choice you should be alert, fair, and able to maintain an open mind toward all the houses during Rushing. Premature and hasty decisions are neither wise nor practical. Even though well-meaning friends and relatives may advise you during Rushing, you should realize that this decision is a very important one and must be made by you alone.

Sorority membership is both a privilege and a responsibility. It is an honor for you to be invited by a group of girls to become a part of their "sisterhood"; but you also have a responsibility to work with and for, your sorority.

We are looking forward to meeting each of you this summer and fall. If, after reading this Handbook, you have any further questions, please feel free to call us—day or night!

Enter Rushing with the belief that you will have a wonderful time, and you'll come through with flying colors and many new friends.

You have a wonderful ten days ahead of you in which you will gain many friends and an exciting introduction to sorority life. I am confident that you will make your choice wisely and well.

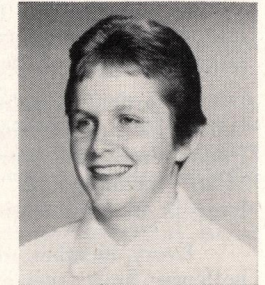
With best wishes,

JUDY GIBB
Panhellenic President

UNIVERSITY OF WASHINGTON PANHELLENIC ASSOCIATION



NOLA MICKELSON
1st Vice President



HEATHER WILLIAMS
2nd Vice President



ROSIE YORK
Secretary



ANN McMEEKIN
Treasurer



KENET FULLER
*Assistant Relations
Chairman*

YOUR PANHELLENIC OFFICERS

The officers of the University of Washington Panhellenic Association are chosen on a rotation basis. The rotation is set up according to the dates of founding of each sorority on this particular campus. Therefore, each sorority has an office in Panhellenic every sixth or seventh year and has a Panhellenic President every twenty years.

The girls who are Panhellenic officers now were elected by their individual chapters and not by a vote of the entire Panhellenic Association. They serve for one year in a training capacity and then move up to the offices of President, First Vice-President, and Second Vice-President in their second year.

PANHELLENIC IS...

Its aims are to act as the coordinating and controlling body for all social sororities, working for the best interests of sororities as a whole, and representing sorority women in our student government. Panhellenic establishes policies and plans activities which reflect the desires and wishes of the sororities.

In order to understand sororities it is important that you understand the organization which holds the sororities together, College Panhellenic. The word "Panhellenic" is derived from Greek roots—"Pan" meaning "all" and "hellenic" meaning "Greek." Thus Panhellenic is an organization of Greek-letter sorority women.

Every member of a sorority is automatically a member of Panhellenic. Since size alone makes it impractical for every member to attend Panhellenic meetings, each sorority is represented by its president and junior delegate, who attend Panhellenic meetings monthly. The purpose of these meetings is to discuss mutual problems concerning sorority standards, scholarship, campus activities, and inter-sorority functions. Before action is taken each president has time to present the question to her own chapter, so that each member may have a part in the final decision. All rules and decisions are therefore made by all the sororities and by the officers working with them.

Even more important than these matters of business which concern Panhellenic is the feeling of cooperation among sororities which these meetings inspire. Warm friendships among the sorority presidents inspire similar esteem among the sororities themselves. This feeling finds expression in inter-sorority social affairs where pledges and actives have a chance to meet and know other "Greeks."

WHY PLEDGE A SORORITY?

In the group that you choose you will find the deepest and truest friends of your college days. It is thrilling and inspiring to find that all girls in the group are personally concerned with your life. They will share your experiences with you, as well as your difficulties and joys. You will form friendships that will last many years after college days are over. Moreover, the fraternity world serves to unite its members in the attainment of high ideals and standards.

Every sorority stresses high scholarship and gives concrete encouragement to attain it. Every pledge and active member is given the responsibility of maintaining her own high record of achievement, with help and encouragement offered to her when any troubles arise.

A sorority provides invaluable training in learning social graciousness, for the sorority house is a home in which each girl is a hostess.

Members learn to meet different types and ages of people easily. At chapter functions they learn graciousness in entertaining. The poise and assurance gained from a well-rounded social experience will be of inestimable value in the world after college.

One of the most important experiences to be realized from sorority life is learning to have consideration for other people and knowing how to cooperate with them. A sorority gives members the rich opportunity of living the group life upon which a vital democracy is based. Through their intimate day-in and day-out experiences they learn to understand and be tolerant of other viewpoints. Members learn to carry their share of the load in group projects. A sorority is a laboratory for living, where techniques learned in the classroom may be put into practice and where many other skills important to successful living may be acquired by doing.

Along with scholarship, sororities encourage extra-curricular activities as a part of a college girl's life to help her develop leadership and assume responsibility. Many activities are available within and without the house which develop leaders not only in the sorority but also on campus. Such activities as AWS, ASUW, the "Y" and membership in religious groups offer varied opportunities for freshman women who wish to expand their interests.

EACH PLEDGE IS TO OTHER PEOPLE A REPRESENTATIVE OF HER CHAPTER, PANHELLENIC, AND HER COLLEGE; AND, THEREFORE, HER ACTIONS AT ALL TIMES WILL REFLECT CREDIT OR DISCREDIT UPON THEM. Sorority membership stands for the best in scholarship, human relations and loyalty. We wish to impress upon the rushee that the pledge period is a period of probation. She is a pledge only at the pleasure of the sorority and only until such time as the chapter chooses to initiate her. The fact that a pledge fulfills the scholastic requirements for initiation does not insure her becoming an active member of the group. She must also prove her ability to obey the standards of the group and to cooperate as an individual in a large group membership.

ELIGIBILITY FOR RUSHING

With thoughts about rushing taking top priority in your life, it is essential to stop for a minute and look at the grade situation. The University of Washington Panhellenic requires a minimum of a 2.3 grade point average from the previous high school. If a girl has attended college for at least a quarter or a semester, Panhellenic requires a 2.0 grade point from college, and disregards the high school grade average.

Although not an eligibility requirement for entering rush Panhellenic feels that it is essential to have a true desire to pledge.

Rushing should not be considered an interesting experiment or an opportunity to meet other people. These alone are not good enough reasons to explain why one wishes to participate in rushing. We do not like to discourage anyone from entering Rush, but a girl who does enter "just to see what it's like" is doing herself as well as others harm. Rushing and pledging are wonderful experiences for those who are truly interested in an activity of this sort. Entering rushing is not a decision to be made lightly. Here, as in all other areas, one will receive only as much as she is willing to offer.

REGISTRATION FOR RUSHING

Your first step along the road to "rushing" should be taken in the direction of the Panhellenic Office, 233 Student Union Building (known on campus as the HUB). To be eligible to receive sorority invitations you must have been admitted by the University of Washington and be registered with the Panhellenic Association. This registration places your name on the rushing list for the consideration of all 20 sororities. Registration includes:

1. Payment of the rushing registration fee of \$5. This includes a box lunch for you on both days of tours.
2. Filling out a registration blank.
3. Giving Panhellenic your local address and telephone number for use during rushing.

YOU MAY REGISTER BY MAIL OR IN PERSON. Your rushing fee may be paid in currency (do not send currency through the mail) or by check, the latter being more advisable. Checks should be made payable to the Panhellenic Association and mailed to 233 Student Union Building, University of Washington. (Your registration for rushing and/or housing will not be complete until all fees are paid). *The deadline for registration for Rushing will be August 31, 1958.*

If for any reason you wish to withdraw from rushing you must fill out a withdrawal slip at the Panhellenic office. The registration fee is refunded if you withdraw prior to the first day of rushing.

Panhellenic is ready to serve you in matters other than registration. If you are in doubt about any of the rushing procedures, call or come to the Panhellenic office. Panhellenic office hours are listed on page 2. It is the function of Panhellenic to assist you with your rushing problems and questions. Personal conferences may be arranged with the Executive Secretary or any of the officers. If you do not have time to make an appointment, come in the office to see us.

WHERE TO STAY DURING RUSHING

If you desire lodgings for the fall rushing period make arrangements for housing immediately. The deadline for housing reservations is August 31, 1958. If you have friends or relatives who can accommodate you in their home, you may wish to make arrangements to stay with them, provided they are not sorority members, active or alumnae.

This year three of the Women's Residence Halls have been obtained as quarters for the rushees. Reservations for the complete eleven-day period only will be accepted. The rate is \$32 and includes the cost of meals. ALL RESERVATIONS TO LIVE IN THE WOMEN'S RESIDENCE HALLS MUST BE MADE THROUGH THE PANHELLENIC OFFICE. DO NOT CONTACT THE RESIDENCE HALLS DIRECTLY.

The halls will be opened for rushees to move in on Monday, September 15, between 10 a.m. and 3 p.m. You will *not* be allowed to move in before that date and time. Meals will be served cafeteria style. The schedule of meals, as well as all regulations concerning living in the residence halls, will be given to you as you move in in the fall. Sheets and blankets will be supplied during your stay, but you will need towels.

IF YOU ARE PLANNING TO GO THROUGH RUSH, DO NOT CONTACT THE RESIDENCE HALLS FOR RESERVATIONS DURING FALL QUARTER. If for some reason you decide not to pledge or if you decide to withdraw from rushing, then the Director of Women's Residence Halls may be contacted concerning a room reservation.

Rushees will not be allowed to receive telephone calls, with the exception of long-distance calls. This policy helps to lessen the chances of contact between sorority women and rushees. Outgoing calls may be made, however, at the pay phones in the halls.

There will be counsellors and a nurse in the Residence Halls throughout rushing to help you with any problems which may arise. It is for this reason that Panhellenic urges you to stay here.

If a girl withdraws from rushing before one-half of the rushing period has elapsed, one-half of her room fee will be refunded. If withdrawal takes place after one-half of the period has elapsed no refund will be made.

You will move out of the Residence Halls on Thursday, September 26, between 12 noon and 2 p.m.

YOUR UNIVERSITY APPOINTMENTS

Your induction into the University will require approximately two days on which you must give your University obligations precedence over all other activities, including rushing. (1) One day, the date of your appointment, will be devoted to registration. (2) Half of another day will be given to Freshman aptitude tests, including the English placement test. After you have been admitted to the University, complete instructions will be mailed to you with your registration appointment. Perhaps the suggestions which follow will enable you to avoid conflicts between your University obligations and rushing dates.

1. Your high school principal has forms on which you may indicate at the time you apply for admission, the date on which you would prefer to register within the specified period. While it may not be possible to fill all requests for a specific date, the closest open date will be assigned. It is suggested that you follow this order in expressing your preference: September 15, 26, 17, 16, 19, 22, 24, 25, 23, 18.

If you already have your registration appointment and find a serious conflict you may write to the Registrar requesting a later date, but not an earlier date. Arranging to see the adviser in the college of your major before the day of your appointment will facilitate your registration.

2. You must attend *one* of the scheduled Aptitude Test sessions if you are an entering freshman. Seattle residents may find September 15 convenient, but any day other than your registration day will be all right.

3. The University will try to schedule your physical examination at a convenient time. Report promptly.

In deciding what courses to take at the University, it is well to think of the Initiation requirements for pledges. Panhellenic requirements for initiation are a minimum of 13 academic hours and a 2.2 grade point average (exclusive of Physical Education). If a pledge takes two quarters in which to earn her grades, Panhellenic requires that she have a 2.0 grade point in the quarter in which she makes her average, and a 2.0 accumulative.

Physical examination and Chest X-ray, required of all entering students, will be given at the Health Center on the campus beginning August 18, by appointment only (write the University Health Center for an appointment). We advise you to take advantage of this if at all possible, since it will reduce your registration time during Rushing.

Registration will go smoothly if you report on time for all specific appointments. If a conflict does occur between a University appointment and a rushing obligation, the *University appointment must be kept regardless*. If you call Panhellenic, LA 4-6000, Extension 2089, or come to 233 Student Union, the officers will see that an adjustment is made in your rushing schedule to take care of such duplications.

YES, THERE IS EXPENSE

After determining your eligibility for rushing you should then take stock of the financial situation. Sororities at Washington have such similar financial requirements for members and pledges that finance, as such, need not be the determining factor in choosing a group. Actually the first decision to make is this: "Can I afford a sorority at all?" If you answer in the affirmative, then disregard finances and proceed to base your choice upon friendship and interest.

The regular expenses levied for the privileges of sorority membership during your four years in college remain basically the same. Although board and room costs no more in a sorority than it does in the women's dormitories on campus, the monthly house bills for girls living in the sorority house are usually higher because they include assessments for social participation, house privileges and dues. Sorority girls who live at home pay a modified house bill which includes fees for social participation and chapter house privileges, dues, and partial board for lunch every college day and dinner on Monday nights, when pledge and chapter meetings are held.

During the first year sorority membership incurs additional expenses such as a pledge fee, initiation expense—which includes a life subscription to the sorority's quarterly publication and the purchase of a sorority pin—and contributions to the building fund. These expenses are incurred only once in a lifetime and are usually made payable during the first year by the majority of sororities. All the sororities receive expert financial supervision by employed professional accountants or experienced alumnae who function in the capacity of financial advisors to the chapters. Detailed financial statements are presented to the parents of new members at the time of pledging and the advisors welcome consultation with the parents at any time.

You may anticipate the expenses of sorority membership to fall within the following ranges:

House and Social Fees, Dues, Room and Board for:

	Range
Members Living in the Chapter House.....	\$75-85
(Monthly payment)	
House and Social Fees, Dues, and Partial Board for	
Members not living in the Chapter House.....	\$35-40
(Monthly payment)	
Pledge and Initiation Fees.....	\$75-110
Building Fund.....	\$60-100

YOUR RUSHING CALENDAR

<p style="text-align: center;">Tuesday September 16 HUB Ballroom ASSEMBLY—9:30 a.m.</p> <p>Sections10:30 a.m. Tours11 a.m.-1 p.m. Lunch1-2 p.m. Tours2-5 p.m.</p> <hr/> <p style="text-align: center;">PICK UP DATES 8:00 a.m. Thursday September 18 1st Period Parties</p> <p>1:303:00 p.m. 3:305:00 p.m. 7:008:30 p.m.</p> <hr/> <p style="text-align: center;">Saturday September 20 1st Period Parties</p> <p>12:001:30 p.m. 7:008:30 p.m.</p> <hr/> <p style="text-align: center;">Monday September 22 2nd Period Parties</p> <p>12:302:00 p.m. 2:304:00 p.m. 7:008:30 p.m.</p> <hr/> <p style="text-align: center;">PICK UP DATES 8:00 a.m. Wednesday September 24 Final Preference Second Preference</p> <p>2:003:00 p.m. 7:008:30 p.m.</p> <hr/> <p style="text-align: center;">First Preference</p> <p>7:008:30 p.m.</p>	<p style="text-align: center;">Wednesday September 17</p> <p>Tours11 a.m.-1 p.m. Lunch1-2 p.m. Tours2-5 p.m.</p> <hr/> <p style="text-align: center;">Friday September 19 1st Period Parties</p> <p>12:302:00 p.m. 2:304:00 p.m. 7:008:30 p.m.</p> <hr/> <p style="text-align: center;">PICK UP DATES 8:00 a.m. Sunday September 21 2nd Period Parties</p> <p>1:303:00 p.m. 3:305:00 p.m. 7:008:30 p.m.</p> <hr/> <p style="text-align: center;">ASSEMBLY—8:45 p.m. HUB Ballroom</p> <hr/> <p style="text-align: center;">PICK UP DATES 8:00 a.m. Tuesday September 23 3rd Period Parties Third Preference</p> <p>1:002:00 p.m. 2:153:15 p.m. 3:304:30 p.m.</p> <hr/> <p style="text-align: center;">Thursday September 25 Pledge Day</p> <p>Bids.....10 a.m. to 12 noon Pledging6:00 p.m.</p> <hr/> <p style="text-align: center;">Reception for Families and Friends</p> <p>9:0011:00 p.m.</p> <hr/> <p style="text-align: center;">Closed House Party</p>
---	--

CALLING FOR DATES

First Period—Pick up your dates Thursday, September 18, at 8 a.m. and turn in replies before 8:45 a.m. Accept eight sororities from your invitations, being sure to regret all other dates extended to you. Return to your section rooms at 1:00 p.m. to pick up your list giving the times that you will be attending parties.

Thursday, September 18	Friday, September 19
1:30-3:00 p.m.	12:30-2:00 p.m.
3:30-5:00 p.m.	2:30-4:00 p.m.
7:00-8:30 p.m.	7:00-8:30 p.m.
Saturday, September 20	
12:00-1:30 p.m.	7:00-8:30 p.m.

Second Period—Pick up your dates Sunday, September 21, at 8 a.m. and turn in replies before 8:45 a.m. If possible, be sure to accept six sororities from the invitations extended to you, being sure to regret all others. None of the dates will indicate a special preference. Return to your section rooms at 1:00 p.m. to pick up your list giving the times that you will be attending parties.

Sunday, September 21	Monday, September 22
1:30-3:00 p.m.	12:30-2:00 p.m.
3:30-5:00 p.m.	2:30-4:00 p.m.
7:00-8:30 p.m.	7:00-8:30 p.m.

Third Period—Pick up your dates Tuesday, September 23, at 8 a.m. and turn in replies before 8:45 a.m. Select the three sororities in which you are most interested and give third preference at 1 p.m.; second preference at 2:15 p.m.; and first preference at 3:30 p.m.

Tuesday, September 23
1:00-2:00 p.m.
2:15-3:15 p.m.
3:30-4:30 p.m.

Note: these are dessert parties and NOT full meals.

Final Preference—Pick up dates Wednesday, September 24 at 8 a.m. and turn in replies before 8:45 a.m. Select the two sororities in which you are most interested and give your first preference (the seven o'clock party) to the sorority which you like the best.

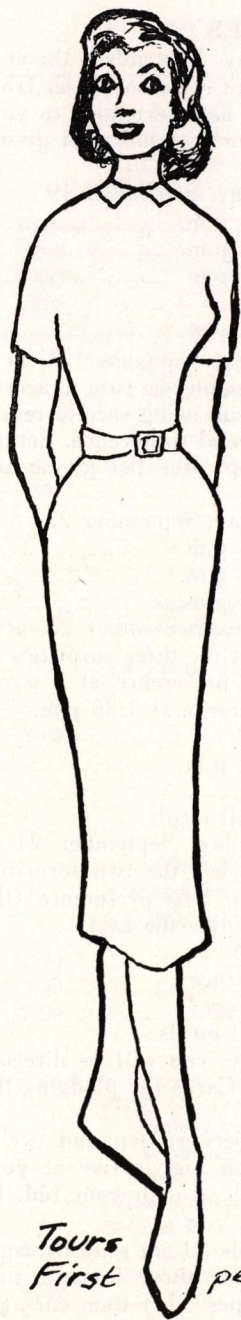
Wednesday, September 24
2:00-3:00 p.m. (<i>second preference</i>)
7:00-8:30 p.m. (<i>first preference</i>)

Note: These are dessert parties and not full meals.

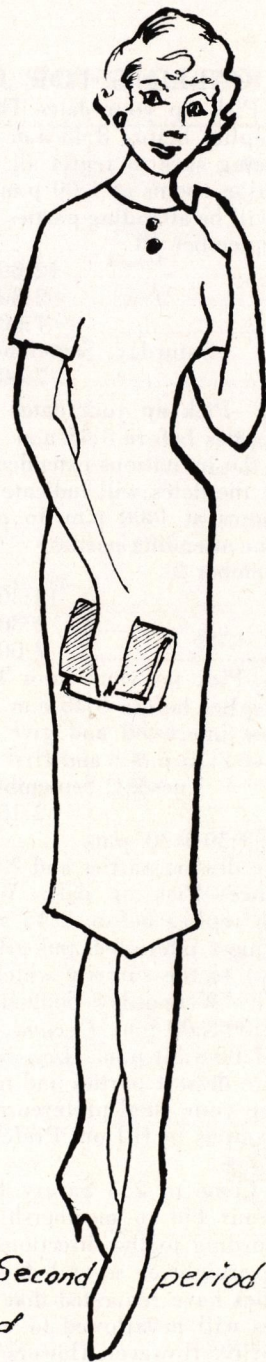
After attending your final preference party, you will be directed to a hall on the campus to fill out Preference Cards for pledging the sorority of your choice.

Pledge Day—Come to 233 Savery Hall between ten and twelve o'clock to claim your bid to membership. You may arrive at your sorority house according to the directions received with your bid. Be prepared to stay overnight or several days.

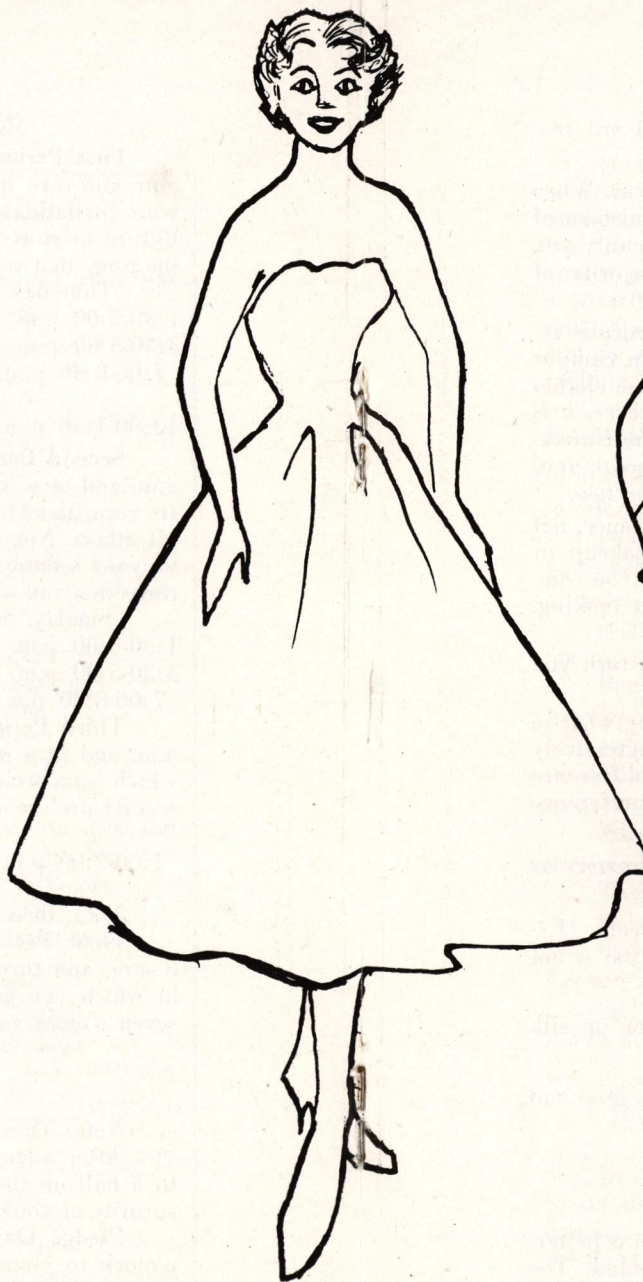
Note—Sororities have requested that friends do not send corsages to pledges. Pledges will be allowed to wear only those corsages presented by the sorority. However, flowers of types other than corsages are welcome.



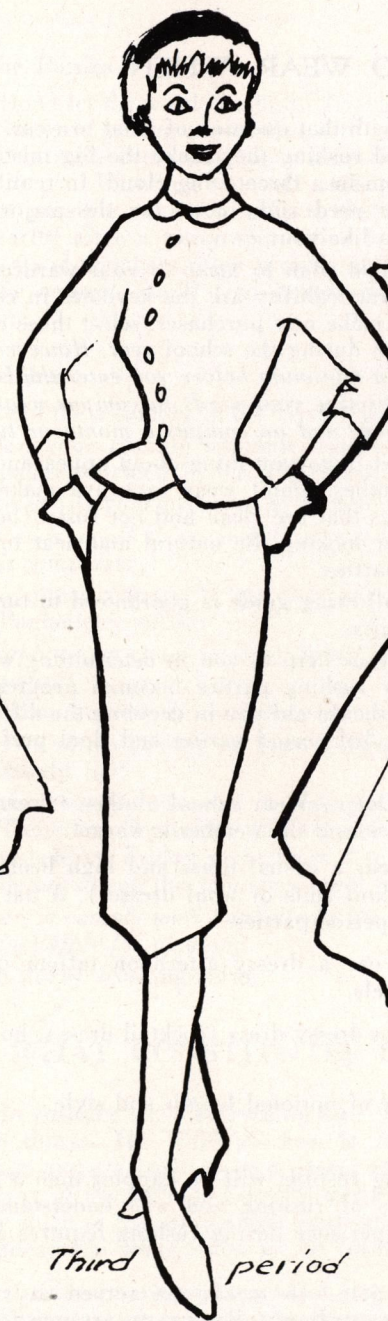
Tours
First period



Second period



Pledging



Third period



Final preference

C.H.

RUSH - 1958

WHAT TO WEAR, WHEN

Here we are faced again with that question of what to wear. When some girls think of college and rushing they make the big mistake of letting clothes loom before them in a threatening cloud. In reality you probably have everything you need right now, for the majority of sorority girls come from homes like your own.

For any additions you might plan to make to your wardrobe remember that simplicity and practicability are the keynotes in campus and rushing clothes. So if you make new purchases, select those clothes you can wear many times again during the school year. *However, it is wise to keep new purchases to a minimum before you enter the University, since it is difficult to determine your needs in campus wear until you have actually been in college and on campus a month or two.*

Good grooming is the most important thing about appearance, not the expensiveness of your clothes. Don't wear excessive makeup or gaudy jewelry. Do wear clothes that are clean and not fussy (be comfortable); have your hair neat looking. Be natural and neat looking. You will have a better time at parties.

A glance or two at the following guide is guaranteed to turn you out correctly at all rushing affairs.

A point that may be of some help to you in determining what to wear is this: the clothing for rushing parties becomes progressively more dressy and formal. This should aid you in deciding the difference in clothing to be worn during 3rd period parties and final preference parties especially.

Tours and First Period Dates—Wear school clothes (sweaters or blouses and skirts, or cotton dresses if the weather is warm).

Second Period Dates—Wear a casual dress and high heels. (Examples of "casual dress" are knit suits or wool dresses). A hat is not worn for either first or second period parties.

Third Period Parties—Wear a dressy afternoon taffeta or silk dress or suit, hat and high heels.

Final Preferences—Wear a dressy dress (cocktail dress), hose and high heels. A hat is not worn.

Pledging—Wear a formal of optional length and style.

Your Schedule

A well ordered life during rushing will be happier than a helter-skelter one. After a few days of rushing you will understand. The strenuous schedule you will experience during rushing requires a great deal of sleep.

And another important note—no meals are served at rushing parties, so budget your time accordingly. Be sure to arrange for adequate meals.

At the Parties

Don't let the word "rushing" frighten you. It simply means that the sororities are getting acquainted with you and you with them. Sorority members make every attempt to keep this process of getting acquainted fun for you. Introduce yourself when greeted at a sorority house door, and if possible express thanks to the residence director when leaving a sorority after a party. Sororities usually serve refreshments at the parties and members often provide entertainment for you. If you relax and *be natural*, you'll find it very easy to have a good time during rushing.

Remember . . .

to attend the assembly in the HUB Ballroom on September 16.

to plan your rushing schedule carefully and note your dates on the pages provided in this Handbook as you accept those dates.

you must fill your program at all times if you have the opportunity.

attendance at all third period parties and all final preference parties is compulsory.

not to spread rumors. If you hear any, report them immediately to the Panhellenic office.

to telephone or come to Panhellenic if you have any questions whatsoever.

to pick up and return your dates promptly.

to arrive at the parties on time. Everything runs on schedule and you should too!

to have your parents and friends plan to attend the open house on Thursday, September 25, from 9 to 11 p.m. Another reception is held on Friday night from 8 to 11 p.m. for college men; they do not attend the Thursday night reception.

Failure to comply with Panhellenic Rushing Rules will make the rushee ineligible for pledging.

not to worry. Rushing is fun!

WHAT CONSTITUTES ILLEGAL RUSHING

In rushing, as in everything else, there is a right and a wrong way to do things. The **WRONG** way to participate in rushing is to encourage or be a party to any illegal rushing, which means the willful breaking of Panhellenic rules. Sororities at Washington are very proud of the spirit of fair play which exists among them, and they frown upon any advantage being taken of the rushing regulations.

Participation in any rushing which tries to outwit the approved rushing plan means that you are not being honest with yourself, nor with Panhellenic. *By becoming a party to illegal rushing you are as guilty as*

the sorority involved and liable to Panhellenic discipline if you fail to report this illegal rushing to Panhellenic within 24 hours after its occurrence.

The following constitute violations of the Panhellenic rushing code:

1. Through the summer months and during rushing proper, aside from the regularly scheduled parties, a rushee in the company of more than one sorority woman from the same sorority constitutes a rushing party. *It is the rule of Panhellenic that there be no prerushing at any time of the year.*

2. There shall be no summer rushing parties of any kind for girls planning to attend the University of Washington. If there should be private parties given by University students during the summer which prospective rushees will be attending, two or more sororities must be represented. There shall be no entertainment by any alumnae groups or any individual alumna.

3. Any communication (by telephone or direct contact) between rushees and sorority women during silent period (September 2 to 25, inclusive) with the exception, of course, of the time you are attending rushing parties. During silent period you may speak to, but not enter into conversation with, an active or alumnae sorority member.

4. A sorority woman double-dating with a rushee during silent period (September 2 to 25).

5. A rushee staying all night with an active or alumnae sorority woman during silent period.

6. A rushee attending more parties than are specified in this Handbook.

7. A sorority extending an invitation at times other than those specified in this Handbook, asking rushees to promise dates, or asking rushees to break dates with another sorority.

8. A sorority using any forceful methods such as hot-boxing (excessive persuasion of one rushee by one or more actives) to influence a girl in the choice of her rushing dates or induce her to pledge.

9. A rushee failing to attend the maximum number of parties.

10. A sorority starting or repeating rumors about another sorority. (Please report any rumors heard to the Panhellenic office.)

11. Deliberate rushing through any third party—alumnae, fraternity men, parents, relatives or friends.

Panhellenic considers a sister or daughter of a sorority member as no different from any other rushee. Therefore, these girls will be subject to the rules governing all prospective rushees and no special events may be given for them. FAILURE TO COMPLY WITH PANHELLENIC RULES WILL MAKE THE RUSHEE INELIGIBLE FOR PLEDGING.

It is well for you as a rushee, to keep in mind that illegal rushing procedures are harmful to you. You alone are the one who is pledging, and you should try to keep an unbiased opinion throughout rush week so that you may choose wisely. Play the game squarely and you will not regret that you did so.

OPEN RUSH

Two weeks after the close of formal rush open rushing begins. Any sophomore, junior, or senior enrolled in the University of Washington is eligible for open rushing, provided she meets Panhellenic's scholastic requirements. There are no rules pertaining to open rush. A sorority may ask a girl to pledge at any time; if the girl accepts the invitation of that sorority she becomes their pledge and is bound by the National Panhellenic rules regarding pledging.

A girl must register with Panhellenic and pay the rushing fee of \$5 before she may be pledged.

Freshman girls are eligible for pledging in open rushing in the spring quarter of their freshman year.

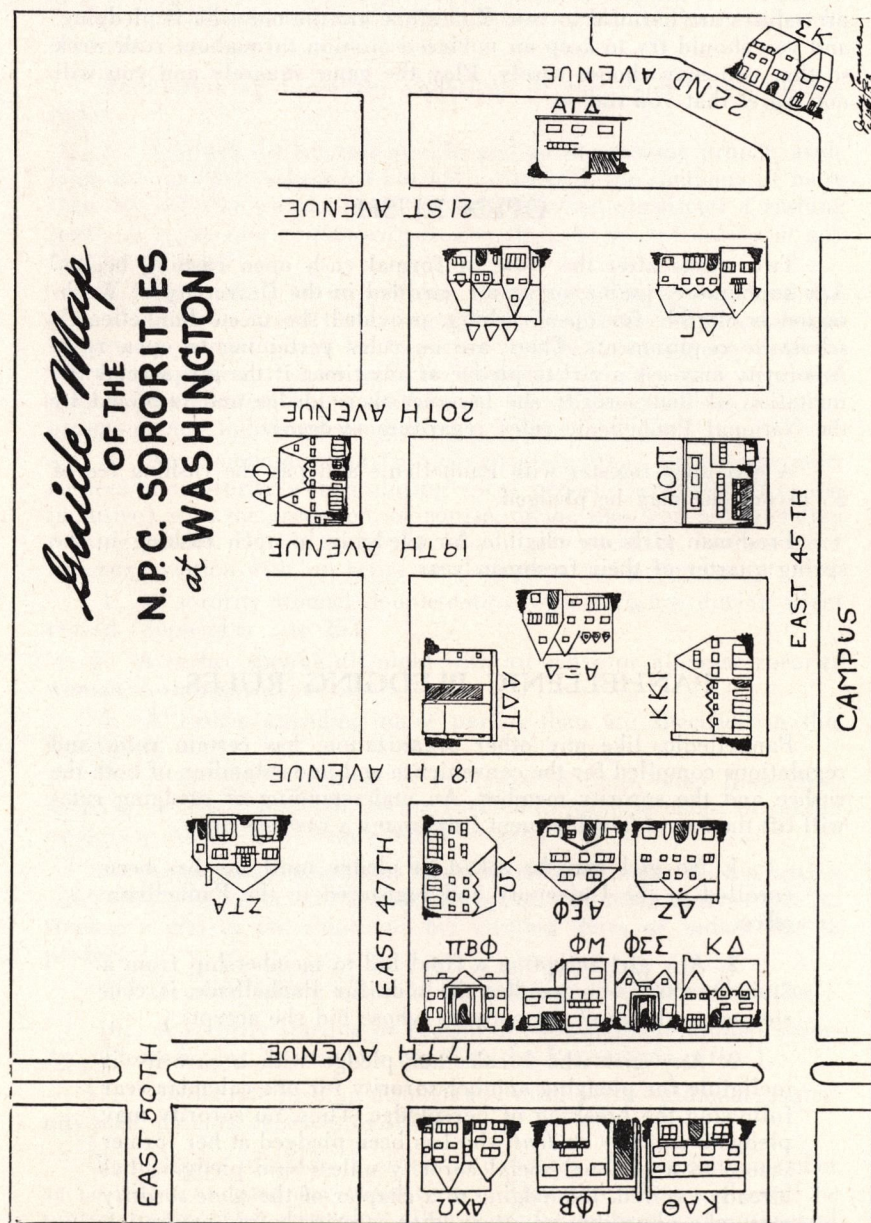
PANHELLENIC PLEDGING RULES

Panhellenic, like any other organization, has certain rules and regulations compiled for the convenience and understanding of both the rushee and the sorority member. An understanding of pledging rules will lift the fog of bewilderment from many a rushee's brow.

1. No girl may be asked to pledge until she has been enrolled in the University and registered in the Panhellenic office.

2. Any girl accepting a final bid to membership from a "third party" who handles the bids for Panhellenic is considered a pledge of the sorority whose bid she accepts.

3. Any girl who breaks her pledge with a sorority is ineligible for pledging another sorority for one calendar year following the breaking of her pledge. Thus, no sorority may pledge a *transfer student* who has been pledged at her former school to a national social sorority unless said pledging has already expired. Repledging to a chapter of the *same sorority* may take place, but not to another sorority before expiration of the original pledgeship. This is a National Panhellenic ruling.



GREEK ROW



ALPHA CHI OMEGA

4545 17th N.E.

President: Priscilla Anderson

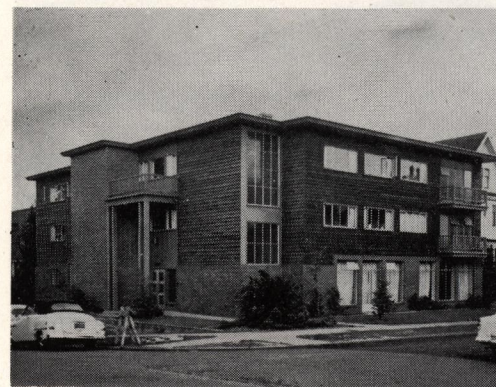
Rushing Chairmen:

Barbara Cliff and

Mercie Martin

Residence Director:

Mrs. Mabel Hendricson



ALPHA DELTA PI

1805 E. 47th

President: Glee Perkins

Rushing Chairmen:

Donna Thomas and

Nancy Gasch

Residence Director:

Mrs. Mabel Williams



ALPHA EPSILON PHI

4543 18th N.E.

President: Rollaine Vines

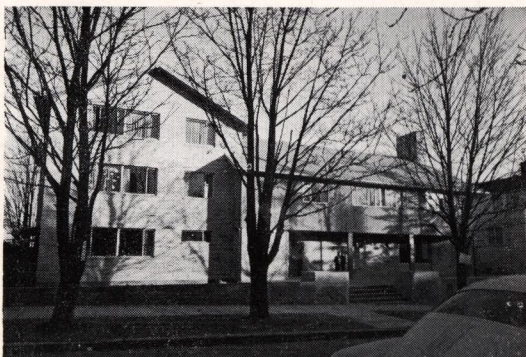
Rushing Chairmen:

Elaine Ordell and

Hermine Pruzan

Residence Director:

Mrs. E. W. Trenbath



ALPHA GAMMA DELTA

4510 21st N.E.

President: Roberta Nelson

Rushing Chairman:
Carole Haas

Residence Director:
Mrs. Margaret Erickson



ALPHA XI DELTA

4541 19th N.E.

President: Maureen McGowan

Rushing Chairmen:
Lee Manley and
Mary Anne Parmeter

Residence Director:
Mrs. Stanley Hunter



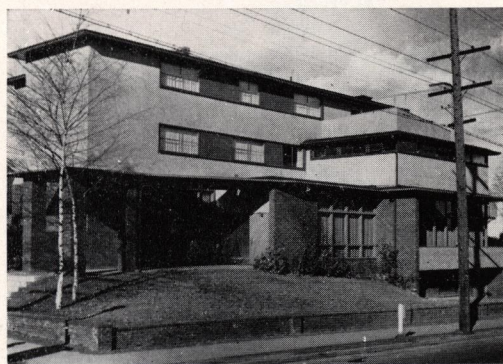
ALPHA OMICRON PI

1906 E. 45th

President: Linda Kassner

Rushing Chairman:
Shirley Gustafson

Residence Director:
Mrs. Bess King



CHI OMEGA

1717 E. 47th

President: Gail Siebel

Rushing Chairmen:
Judy Graham and
Vicki Beaudry

Residence Director:
Mrs. Frank Plummer



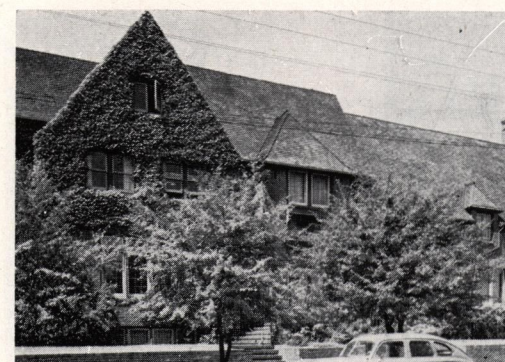
ALPHA PHI

1900 E. 47th

President: Camille Clark

Rushing Chairmen:
Diane Deeny and
Margie Barton

Residence Director:
Mrs. R. H. Chapler



DELTA DELTA DELTA

4527 21st N.E.

President: Katherine Johnson

Rushing Chairmen:
Tellelyn Hoffman and
Marcia Fortenbacher

Residence Director:
Mrs. Mildred Ward



DELTA GAMMA

2012 E. 45th

President: Pat Kelly

Rushing Chairman:
Virginia Souder

Residence Director:
Mrs. R. C. Skillern



DELTA ZETA

4535 18th N.E.

President: Suzie Trimble

Rushing Chairman:
Arlene Ness

Residence Director:
Mrs. G. B. Martin



GAMMA PHI BETA

4529 17th N.E.

President: Ann Birkenmeyer

Rushing Chairmen:
Mary Lewis and
Meri Poska

Residence Director:
Mrs. Dean Ballard



KAPPA ALPHA THETA

4521 17th N.E.

President: Gail Wilcox

Rushing Chairman:
Janice McPhee

Residence Director:
Mrs. Merrill Shaw



KAPPA DELTA

4524 17th N.E.

President: Connie Kravitz

Rushing Chairmen:
Bobbi Kimm and
Bev Bright

Residence Director:
Mrs. Randelsome



KAPPA KAPPA GAMMA

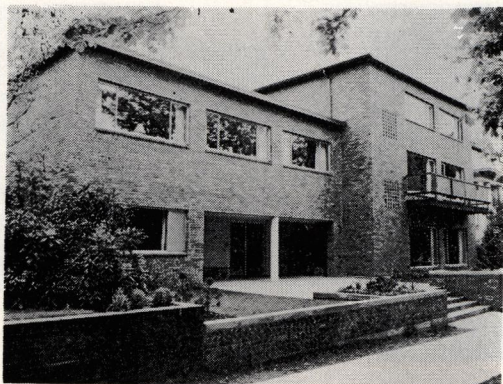
4504 18th N.E.

President: Marli Janssen

Rushing Chairman:
Janet Alton

Residence Director:
Mrs. Zora Pryor





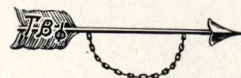
PHI MU
4540 17th N.E.

President: Dottie Dressel
Rushing Chairman:
Janet Kearns
Residence Director:
Mrs. Walter Brown



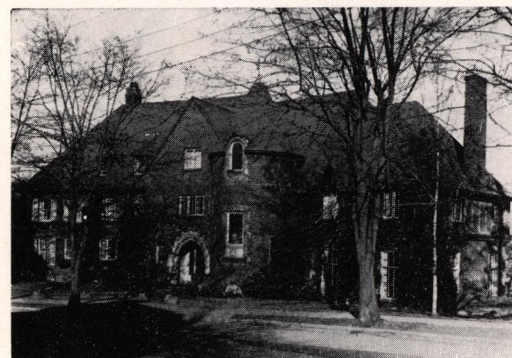
PHI SIGMA SIGMA
4520 17th N.E.

President: Carol Frank
Rushing Chairman:
Barbara Pearlman
Residence Director:
Mrs. Everett T. Moore



PI BETA PHI
4548 17th N.E.

President: Neva Fuller
Rushing Chairmen:
Sally Bergren and
Linda Rafael
Residence Director:
Mrs. Clara Young



SIGMA KAPPA
4510 22nd N.E.

President: Sandy Dahl
Rushing Chairman:
Ann Williamson
Residence Director:
Mrs. Ethel K. Riedel



ZETA TAU ALPHA
4731 18th N.E.

President: Karen Helwig
Rushing Chairman:
Sue Nichols
Residence Director:
Mrs. Heath



A Alpha

B Beta

Г Gamma

Δ Delta

E Epsilon

Z Zeta

H Eta

Θ Theta

I Iota

K Kappa

Λ Lambda

M Mu

N Nu

Ξ Xi

O Omicron

Π Pi

P Rho

Σ Sigma

T Tau

Υ Upsilon

Φ Phi

X Chi

Ψ Psi

Ω Omega