



Sculpture House



materials for

- MODELING
- POTTERY
- MOLD MAKING
- CASTING



Jolly King BRAND

WHEN ORDERING:

Please mention the catalog number, the name of the item, and the size and quantity desired.

SHIPPING INSTRUCTIONS:

Please advise whether shipment is desired by parcel post, Railway Express or freight. For parcel post shipments, please include sufficient postage. Allow more than enough and the balance will be refunded promptly.

TERMS:

Please send check or money order with all orders unless you desire shipment made C.O.D. For the convenience of clients who intend to order frequently during the calendar year, we will be pleased to open charge accounts upon the receipt of three satisfactory credit references where charge accounts have been satisfactorily maintained in the past.

OUR GUARANTEE:

We guarantee all merchandise manufactured by Sculpture House to be exactly as represented, and to be made of first quality materials and first class workmanship and that it will give satisfactory service. If found to be otherwise, merchandise may be returned to us within a reasonable time.

SEND FOR CATALOG OF WOOD CARVING TOOLS

Catalogue No. 3



ROMA *Italian* PLASTILINA

LET YOUR FINGERS PROVE THE QUALITY OF THIS SUPERIOR PLASTILINA



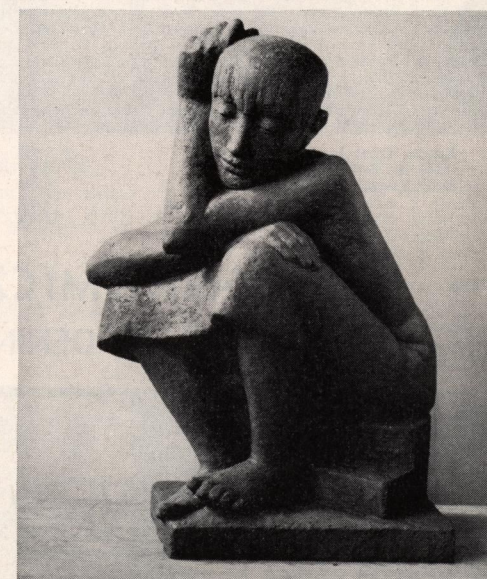
ROMA PLASTILINA now is made in the U.S.A. exclusively by SCULPTURE HOUSE in strict accordance with the original formula for genuine ROMA Italian plastilina. In making ROMA PLASTILINA only the finest oils and the purest ingredients are carefully blended by skilled technicians who, after years of experience, know how to give ROMA PLASTILINA the "feel" that no other Plastilina has been able to duplicate. ROMA PLASTILINA never will harden, crust or become "gummy."

THE CHOICE OF LEADING SCULPTORS AND SCHOOLS

Yes, you will find pleasure in using ROMA PLASTILINA. You will enjoy the way it willingly responds to your every touch . . . the easy way it captures every line and form you wish to portray in your work. To convince yourself of the value of ROMA PLASTILINA, order a trial amount today. Then let your fingers prove the quality of this superior Plastilina. It is the finest!

AT LOW PRE-WAR PRICES

2 to 78 Pounds	55c per pound
80 to 158 Pounds	50c per pound
160 Pounds and over	48½c per pound
Roma White	60c per pound



Ceramic Sculpture by Professor Henry Rox, Mount Holyoke College and School of Worcester Art Museum.

YOUR CHOICE OF CONSISTENCIES

- #1 — SOFT: Extremely plastic. Grey-Green color.
- #2 — MEDIUM: Slightly firmer for average work. Grey-Green, Yellow-Green, Dove-Grey colors.
- #3 — MEDIUM-FIRM: For smaller models. Grey-Green and White colors.
- #4 — EXTRA-HARD: For small work. Grey-Green.

When ordering ROMA please specify color and consistency. Samples sent on request.

Sculpture House

304 West 42nd Street
New York 18, N. Y.

Jolly King BRAND
SCULPTURE ACCESSORIES

DELLA ROBBIA—The Miracle Clay

CERAMICS AT HOME—IN A KITCHEN OVEN



DELLA ROBBIA MIRACLE CLAY

DELLA ROBBIA MIRACLE CLAY — a recent development combining the traditional formula for potter's clay with the modern science of plastics — makes lasting ceramic objects **without kiln firing!** DELLA ROBBIA is ready-to-use for making all types of models, pottery, costume jewelry and novelties. Even the most inexperienced hands can create useful ceramic objects. Place complete work in an ordinary kitchen oven and bake at 250°F. DELLA ROBBIA objects can be beautifully decorated by brushing on DELLA ROBBIA LIQUID GLAZE.

Large Trial Jar	\$ 1.50
12½ lb. Bulk Jar	3.95
Bulk Kegs: 25 lb.	6.50
50 lb.	8.85
100 lb.	15.85

DELLA ROBBIA CERAMIC KIT

All necessary materials for creating lasting pottery, costume jewelry, statuettes, novelties. A perfect gift kit. Contains: Large Trial Jar Della Robbia Clay — Complete Della Robbia Glaze Set — 3 Lustrex Plastic Modeling Tools — Complete Illustrated Instruction Book.



MONEY SAVING PRICE.....only \$5.95

3 ECONOMICAL PLASTELINES

NON HARDENING — NON DRYING



#P-350 ART SCHOOL PLASTELINE

ART SCHOOL PLASTELINE was especially developed to give all around satisfaction in the hands of students. It is fully guaranteed never to harden or toughen. Maximum value. Colors: Terra-Cotta, Grey, and Grey-Green. Wrapped in 1 lb. package.

Per Pound\$.35

ID-S PLASTELINE

ID-S IS THE INDUSTRIAL DESIGN PLASTELINE. It was developed especially for designers after exhaustive studies of the special properties desired in model work. ID-S is fully guaranteed never to harden, crust, or toughen. Color — neutral grey. Packaged in 2 lb. prints.

2 to 38 lbs.\$.45 per pound
40 lbs. or over......40 per pound

#P-250 JOLLY KING PLASTELINE

JOLLY KING BRAND PLASTELINE—A permanently plastic modeling clay for amateurs' use. One of the highest quality low-priced plastelins on the market. Available in Grey, Grey-Green, and Terra-Cotta.

Per Pound\$.25

National Sculpture Services
Standard Clay Mines

Sculpture House

304 West 42nd Street
New York 18, N. Y.

Sculptors' Bronze Foundry
Platex Rubber Laboratories

NOW! DECORATE AND MONOGRAM YOUR OWN CHINA AND GLASSWARE -- TRAYS -- FIGURINES -- WITH DELLA ROBBIA LIQUID GLAZE!

BAKES TO A DURABLE, SPARKLING GLAZE IN YOUR KITCHEN OVEN!

With the amazing new DELLA ROBBIA LIQUID GLAZE anyone can easily create beautiful, durable glaze finishes on clay, glass, ceramic tiles, metal trays and plaster objects. It is perfect for decorating chinaware. Fires at 275°F. DELLA ROBBIA GLAZE surfaces withstand hot water, alcohol, and other liquid stains . . . resist cigarette burns . . . will not chip or peel.



GLAZE KIT #200

Contains 7 sparkling glazes (1 oz. size) plus 4 oz. jars of Undercoat, Reducer and Hardener. Colors may be intermixed to form a variety of shades. Instructions included.

ONLY\$2.85

AVAILABLE IN THESE SPARKLING GLAZE COLORS

Cardinal Red	Cinnamon Brown
Old Rose	Statuary Brown
Jade Green	Persian Orange
Emerald Green	Sunglow Orange
Antique Buff	Azure Blue
Topaz Yellow	Ultramarine
Golden Yellow	Delft Blue
Glacier White	Midnight Blue
Eggshell White	Congo Black
Silver Grey	Twilight Purple
Gold	Silver
	Transparent Clear

DECORATING KIT #400

Contains a total of 14 Glaze colors and glaze materials, 4 mixing trays. Instruction Book and Monogram included.

MONEY SAVING PRICE.....\$3.95

DELLA ROBBIA LIQUID GLAZE

1 oz. jar	\$.35
¼ Pint	.65
Pint jar	1.85
Quart	3.45
Gallon	9.85

DELLA ROBBIA REDUCER

For thinning glaze and cleaning.

¼ Pint	\$.35
Pint	.85
Quart	1.45
Gallon	3.85

DECORATING KIT #300

Contains a total of 8 beautiful Glaze colors and glaze materials, 2 glazing brushes, Instruction Book revealing famous 3-stroke method for painting on glass and china, 2 sets of monograms.

COMPLETE OUTFIT ONLY.....\$2.95

DELLA ROBBIA UNDERCOAT

Necessary only for sealing pores of clay and plaster objects before applying glaze.

¼ Pint Jar	\$.35
Pint	1.00
Quart	1.85

DELLA ROBBIA HARDENER

Add to Della Robbia Liquid Glaze to harden glaze without baking.

4 oz. Jar	\$.35
Pint	.95
Quart	1.45

SAMPLES OF THE EASY-TO-DO AND BEAUTIFUL DECORATIONS POSSIBLE WITH DELLA ROBBIA LIQUID GLAZE



A Policy of Quality
at the Lowest Prices

Sculpture House

304 West 42nd Street
New York 18, N. Y.



Jolly King BRAND

MODELING AND POTTERY CLAYS

No matter what your need for clay may be you will find it listed here. SCULPTURE HOUSE technicians have searched everywhere to bring you the finest in modeling and pottery clays direct from the mines at money-saving values!

JOLLY KING FLINT

5 lb. Can \$.75
25 lb. Container 2.50

CHINA CLAY

5 lb. Can \$.75
25 lb. Container 2.50



JOLLY KING MOIST MODELING CLAY

Ready-to-use moist clay of utmost plasticity for modeling, pottery, pressing. Fires grey-white with minimum shrinkage at 1650°F. to 2200°F. Excellent for glazing.

5 lb. Can 60c
25 lb. Container \$2.00
50 lb. Container 3.50
100 lb. Container 6.00

JOLLY KING CLAY FLOUR

Just add water to this fine dry clay flour to form smooth-textured clay. Use and firing characteristics same as JOLLY KING Plastic Clay.

5 lb. Container 60c
50 lb. Container \$3.50
100 lb. Container 6.00

JOLLY KING RED CLAY

Highly plastic moist clay ready-to-use for all types of modeling and pottery. Fires deep red at 1650°F. to 2200°F. Available also in dry clay flour form. Specify type desired.

5 lb. Can 65c
25 lb. Container \$2.00
50 lb. Container 3.85
100 lb. Container 7.50
1 Gallon Slip 1.85
Container Charge—per gal.10

MONMOUTH MODELING AND POTTERY CLAY

For those who want the best, this is the original MONMOUTH CLAY—washed and filter-pressed. Ready-to-use. Fires to tight, strong, light buff body at 1600°F. to 2700°F.

5 lb. Can 75c
25 lb. Container \$2.25
50 lb. Container 4.00
100 lb. Container 7.50

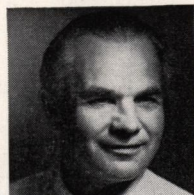
DOVER WHITE CERAMIC CLAY

A Balanced Body Contains
Ball Clay, Flint, China Clay

Extremely plastic refined clay for high quality ceramic work. Suited for modeling, throwing, pressing or casting. Fires pure white at 1800°F. Also available in dry clay flour form. Specify type desired.

5 lb. Can 75c
50 lb. Container \$4.50
100 lb. Container 8.50
1 Gallon Slip—per gal. 1.85
5 Gallon Slip—per gal. 1.15
25 Gallon Slip—per gal.95
Container charge—per gal.10

FAMOUS CERAMIC ARTISTS USE DOVER WHITE CLAY

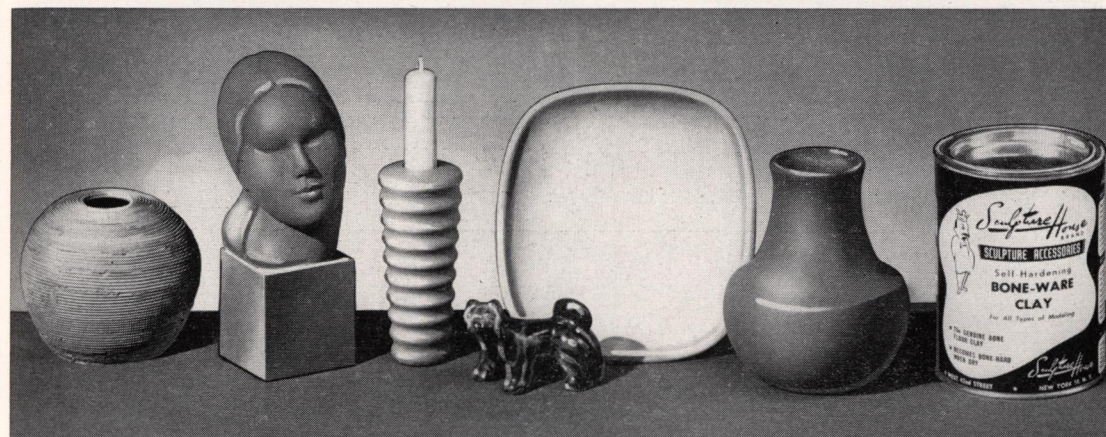


William Soini received his ceramic training in Finland, Sweden, and the United States. He served on the staff of Arabia Porcelain Works in Finland and has taught in leading ceramic schools. This famous expert says: "I prefer DOVER WHITE CLAY. It is one of the best ceramic bodies I ever used."

Mrs. Frances Serber is Director of the Ceramic Division of Associated American Artists Galleries. She studied in Paris, Vienna, Madrid, and the United States. Has won many awards. Mrs. Serber uses DOVER WHITE CERAMIC CLAY for her finest ceramic productions.



BONE-WARE SELF-HARDENING CLAY MAKES DURABLE — USEFUL — BEAUTIFUL OBJECTS



BONE-WARE SELF-HARDENING CLAY

New moist modeling clay that truly is self-hardening. Perfect for all types of pottery, costume jewelry, statuettes, novelties. Becomes bone-hard when thoroughly dried in air.

COLORS: GREY, GREEN AND TERRA COTTA

STATE COLOR

1 lb. Can \$.50
5 lb. Can 1.45
25 lb. Container 5.85
50 lb. Container 8.25



Jolly King BRAND

POTTERY MATERIALS

TURNING TOOLS

Finest quality steel ground to perfect working edge. Solid steel shank extends through polished hardwood handle. Assorted practical shapes.

P-1 Turning Tool \$1.25
P-2 Turning Tool 1.25
P-3 Turning Tool 1.25

FLEXIBLE STEEL PALETTES

Perfectly shaped with smooth, even working edges for both clay and plaster work. Very flexible blueed gunsmith finish steel—the best quality.

P-4 Steel Palette ea. 20c
P-5 Steel Palette ea. 20c
P-6 Steel Palette ea. 20c
P-5A Steel Palette with teeth ea. 25c

POTTER'S SPONGE

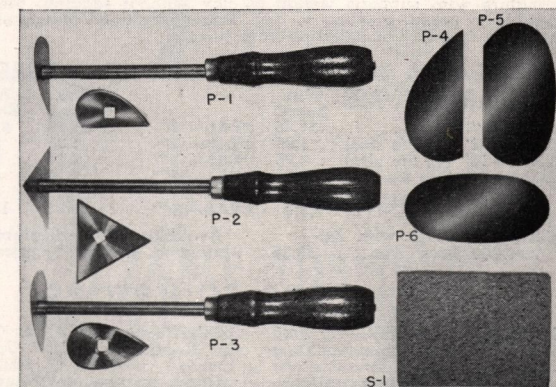
For smoothing clay surfaces and moistening clay work. Highest quality sponge rubber, silky soft. Size 3" x 4" x 1/2".

S-1 Potter's Sponge ea. \$.50

GROG

Fired clay that has been crushed and screened. Add to clay bodies to prevent warping, reduce shrinkage, increase strength and produce interesting surface textures. Available in fine, medium and coarse mesh.

5 lb. Package 65c
25 lb. Container \$2.50

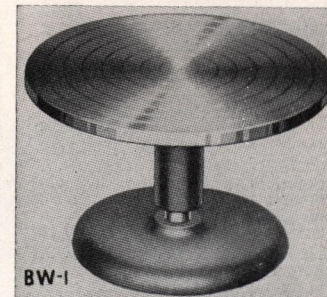


JOLLY KING BENCH WHIRLER

Excellent, inexpensive potters' wheel for studio, school and home use. Cast iron head (8" diameter) revolves easily and evenly on ball bearing pivot set in cast iron base. Very sturdy. Over-all height 6 1/4". Perfect for modeling, decorating and banding pottery.

BW-1 Potters' Bench Whirler \$10.95

POTTERY CLAYS: See page 4 of this catalogue.



A Policy of Quality
at the Lowest Prices

Sculpture House

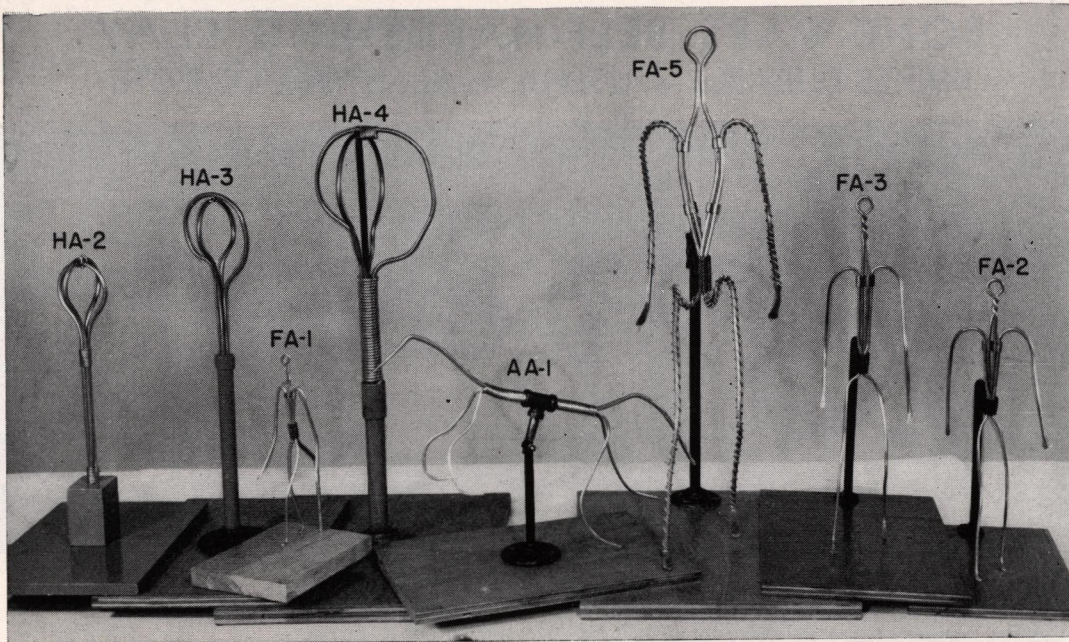
304 West 42nd Street
New York 18, N. Y.

National Sculpture Services
Standard Clay Mines

Sculpture House

304 West 42nd Street
New York 18, N. Y.

Sculptors' Bronze Foundry
Platex Rubber Laboratories



Jolly King BRAND

ARMATURES

DESIGNED by the Technical Director of SCULPTURE HOUSE, these armatures are properly proportioned and allow complete freedom of movement—far more than that of conventional armatures. Non-corrosive soft alloy armature wire supports weight of clay without sagging, yet is flexible to permit bending to any desired position. Sturdy steel backbone is firmly mounted on base board.

HEAD & BUST ARMATURES

	With Board
#HA1—8" ..	\$1.35
#HA2—12" (1/2 life size) ..	1.95
#HA3—15" (3/4 life size) ..	2.85
#HA4—18" (life size) ..	3.85

ANIMAL ARMATURES

#AA-1—8" High with Adjustable Back Iron ..	\$3.25
--	--------

FIGURE ARMATURES

	Without Board	With Board
#FA1—8" ..	\$1.65	\$1.85
#FA2—12" ..	1.95	2.25
#FA3—15" ..	2.45	2.75
#FA4—18" ..	3.10	3.85
#FA5—24" ..	3.95	4.95
#FA6—36" ..	10.85	12.85

* Available with adjustable backbone, add 65c to price.

BOOKS FOR SCULPTORS

MOLDING & CASTING—by Prof. C. D. Clarke. Complete molding instructions plus formulas for compounding molding and casting materials. 300 PP., 280 Illustrations. **Price \$6.50**

ZORACH EXPLAINS SCULPTURE—HOW IT IS MADE—by Wm. Zorach. Newest and most complete "how-to-do-it" book describes every step in sculpture. 302 PP., 400 Illustrations. **Price \$7.50**

THE MATERIALS & METHODS OF SCULPTURE—by J. C. Rich. A practical presentation of technical aspects of sculpture in all media. 400 PP., 188 Illustrations. **Price \$7.50**

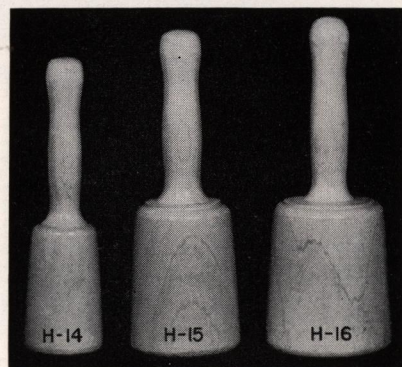
THE POTTER'S CRAFT—by C. F. Binns. The most practical guide to ceramic work: turning, glazing, firing, etc. 128 PP., 20 Illustrations. **Price \$3.00**

SCULPTURE—INSIDE & OUT—by Malvina Hoffman. Comprehensive coverage of sculpture, casting, carving, enlarging, etc. 330 PP., 283 Illustrations. **Price \$7.50**

FUNDAMENTALS OF CLAY MODELING—by R. R. Fiore. Discusses tools, materials, how to model. Recommended for beginners. 48 PP., 100 Illustrations. **Price \$1.00**

POTTER'S PRIMER—by Snead. Ideal for beginners. Preparing clay, making pottery, costume jewelry, coloring and casting, etc. **Price \$1.50**

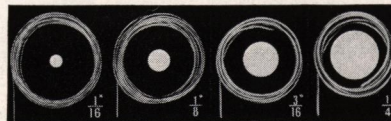
ANATOMY & DRAWING—by V. Perard. The basis of sculpture is understanding of anatomical construction. Teaches how to draw all parts of the figure. 180 PP., over 1000 Illustrations. **Price \$3.50**



HARDWOOD CARVING MALLETS

Handle and body one piece, turned out of solid, heart-wood hickory. Perfect for stone and wood carving.

#H14—3/4 Lb.	\$2.65
#H15—1 1/2 Lbs.	3.25
#H16—2 Lbs.	3.65



ARMATURE WIRE

New, non-corrosive aluminum alloy wire for armature construction. Has improved pliability. Stronger than lead of larger sizes.

1/16" Dia.—30 Feet	36c
1/8" Dia.—20 Feet	65c
3/16" Dia.—10 Feet	78c
1/4" Dia.—10 Feet	85c



Jolly King BRAND

MODELING STAND

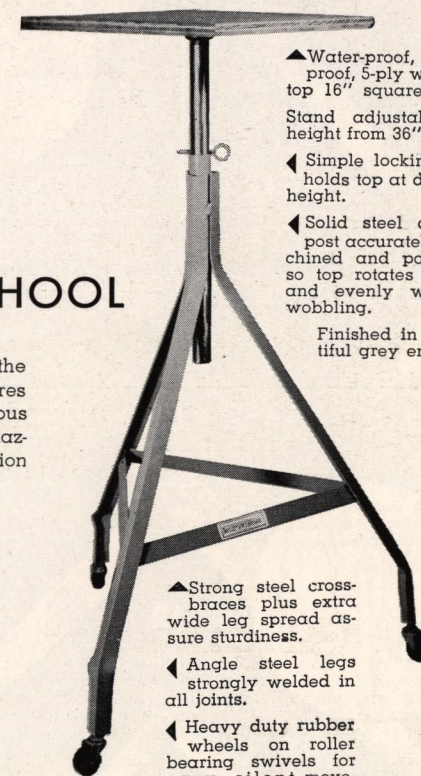
THIS MODERN ALL-STEEL STAND HAS EVERYTHING YOU WANT IN DESIGN—CONSTRUCTION AND CONVENIENCE . . .

...for STUDIO · HOME · SCHOOL

TRIM and modern in design . . . sturdy in construction, the JOLLY KING Modeling Stand embodies all the features recommended by our Advisory Board of nationally famous Sculptors for an ideal, all-purpose modeling stand. This amazingly light and rigid stand with all-steel welded construction never will warp or creak. The sturdy top rotates freely on its solid polished steel centerpost and is easily adjustable to the height most convenient for your work. Its neat, trim appearance will "dress up" the studio or class room. Amazingly strong, it will support all types of small and medium-sized sculpture up to 200 lbs. Just check the many outstanding features that are exclusively embodied in the JOLLY KING Stand and you will agree it is built to serve you for a life-time!

AT AMAZINGLY LOW PRICES

Jolly King Stand with casters (shown)	\$22.85
Jolly King Stand without casters	21.50



▲ Water-proof, split-proof, 5-ply wooden top 16" square.

Stand adjustable in height from 36" to 52".

◀ Simple locking pin holds top at desired height.

◀ Solid steel centerpost accurately machined and polished so top rotates freely and evenly without wobbling.

Finished in beautiful grey enamel.

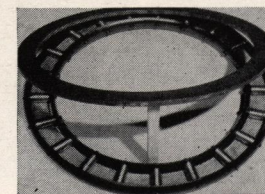
▲ Strong steel cross-braces plus extra wide leg spread assure sturdiness.

◀ Angle steel legs strongly welded in all joints.

◀ Heavy duty rubber wheels on roller bearing swivels for easy, silent movement.

TURNTABLE ROLLER BEARINGS HEAVY DUTY

FOR heavy figures, groups, marble carving large bas-reliefs, use these specially designed complete units. Expertly machined out of forged steel for maximum strength and durability, they will last a lifetime. Ready to use—may be placed on floor or platform with work placed directly upon unit. No other parts required. Matched steel rollers permit rotating ring to turn easily under weights up to several tons. Sizes not listed made to order up to 48" diameter. Write for prices of special sizes.



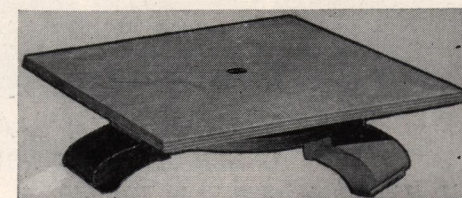
T-1	16" Diameter	\$26.85
T-2	20" Diameter	28.90
T-3	30" Diameter	32.85

Jolly King BRAND

TABLE TURNETTE

THIS sturdy, attractively designed, table size modeling stand is perfect for all of your small work. Water-proofed plywood top rotates freely on three bearings. Base is constructed on three moulded hardwood feet. Light in weight, compact in design, carefully balanced to support your work without tipping or teetering. An ideal stand for home, studio, classroom. Natural wood, lacquered finish.

ONLY \$3.95



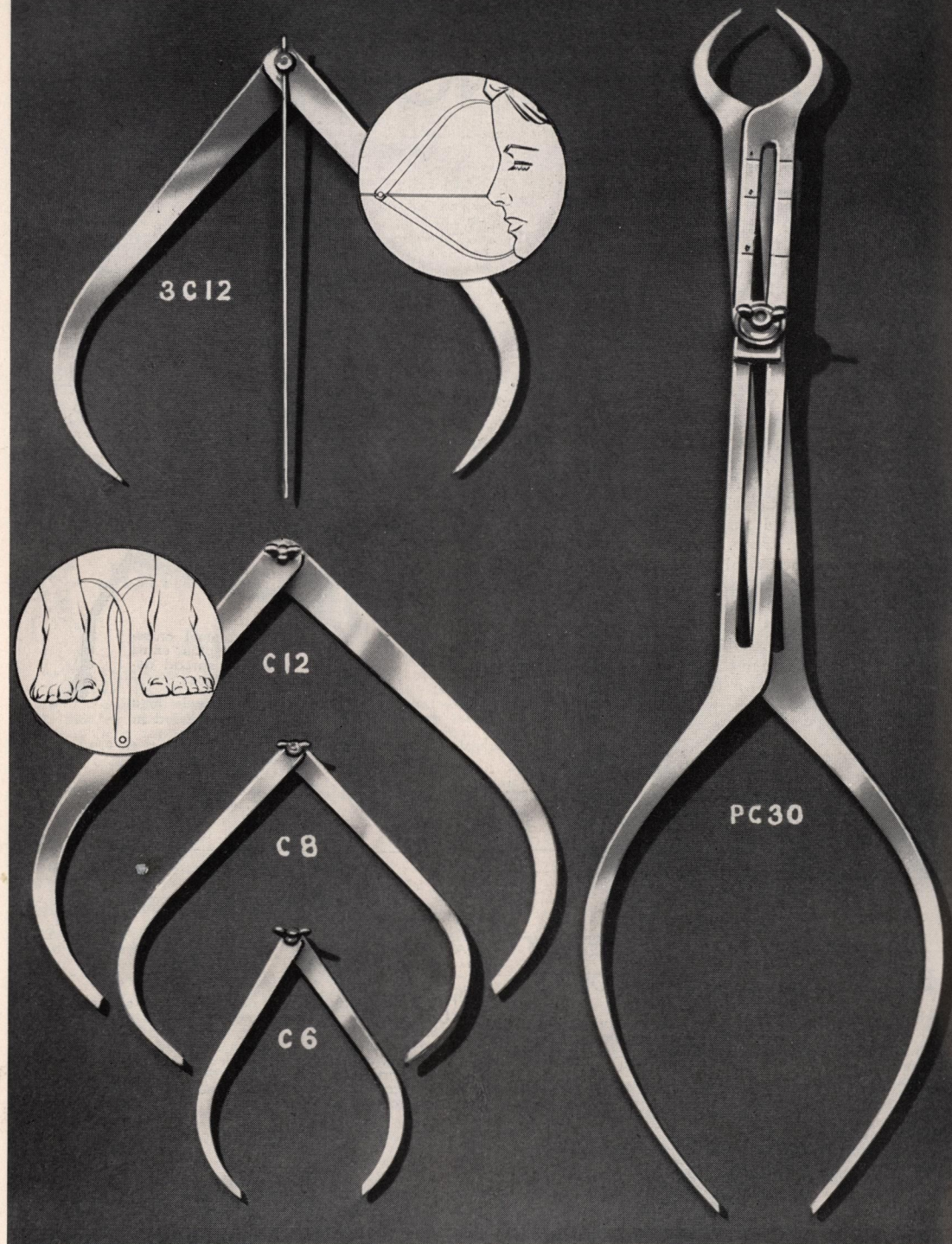
Sculpture House

304 West 42nd Street
New York 18, N. Y.

A Policy of Quality
at the Lowest Prices

Sculpture House

304 West 42nd Street
New York 18, N. Y.



SCULPTOR'S ALUMINUM CALIPERS

TENSION ADJUSTABLE WITH WING NUT. SUPERIOR QUALITY

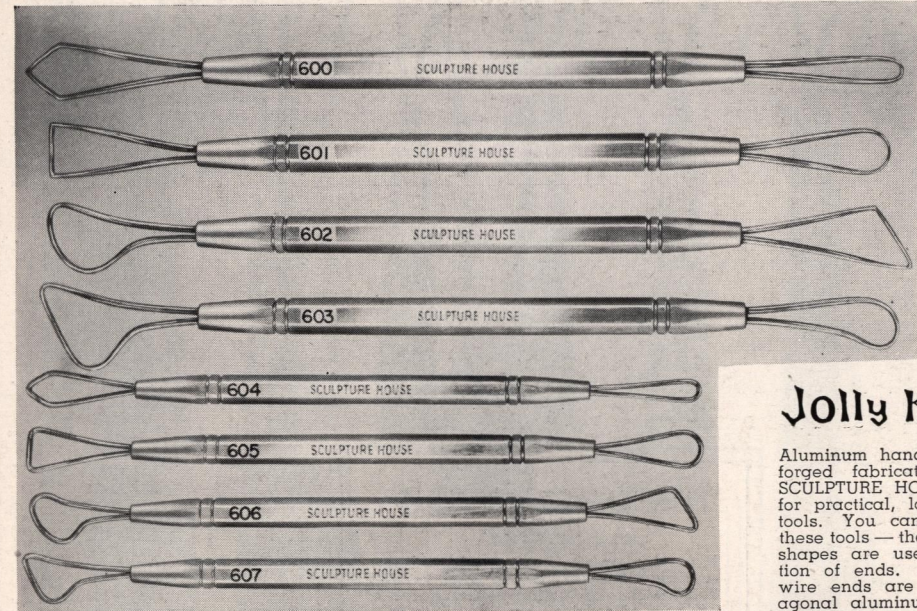
DURAL PROPORTIONAL CALIPER

Enlarges up to 5 times — Reduces to $\frac{1}{4}$
Measurements may be taken inside as well as outside
PC30 Proportional Caliper 30" long\$13.85

3C12	12"	3 Point Caliper Center Point fully adjustable	\$3.85
C12	12"	Caliper—Use inside or outside	1.95
C8	8"	Caliper—Use inside or outside	1.50
C6	6"	Caliper—Use inside or outside	1.00

ALUMINUM MODELING TOOLS BY SCULPTURE HOUSE

SOLID BRASS WIRE ENDS



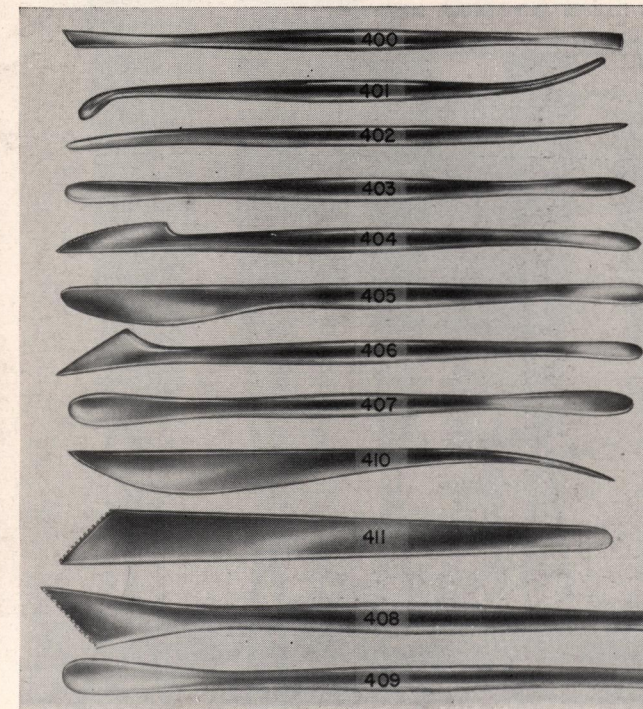
"Just look at the amazing low-cost tools on this page. They are the best value on the market!"

Jolly King BRAND

Aluminum handle tools of drop-forged fabrication are a new SCULPTURE HOUSE development for practical, low cost modeling tools. You can get tough with these tools — they can take it! All shapes are useful — no duplication of ends. Solid hard brass wire ends are forged into hexagonal aluminum handle. (Tools illustrated approximately $\frac{1}{2}$ size.)

#600 to 603 — 8" long75c ea. #604 to 607 — 6" long50c ea. Set of 8 Tools Only \$4.75

NEW! LUSTREX-PLASTIC MODELING TOOLS



Never before have modeling tools of such unsurpassed quality been available. Designed by one of our Advisory Board Sculptors, this assortment of LUSTREX-Plastic modeling tools is the finest and the most useful available at any price. Molded under 100 tons of pressure from modern, water-proof LUSTREX-Plastic, they are guaranteed to out-wear the most rugged wooden tools.

The smooth, polished surfaces of these new LUSTREX-Plastic modeling tools are easy to clean — just wipe with a cloth and all clay is instantly removed. Perfect to use, they are designed in the most popular styles — each tool has two useful ends. The set of 12 provides you with the entire range of generally used shapes, each accurately designed for modeling even the most delicate contours and lines.

The development of these tools, after many months of designing, is part of the policy of SCULPTURE HOUSE to bring you the most modern in sculpture accessories at the very lowest possible price. Be among the first to use these tools — order a complete set today. They will prove to be the most practical you ever have purchased. (Tools illustrated approximately $\frac{1}{2}$ size.)

Complete Set of 12 Tools (illustrated) ..Only \$2.65

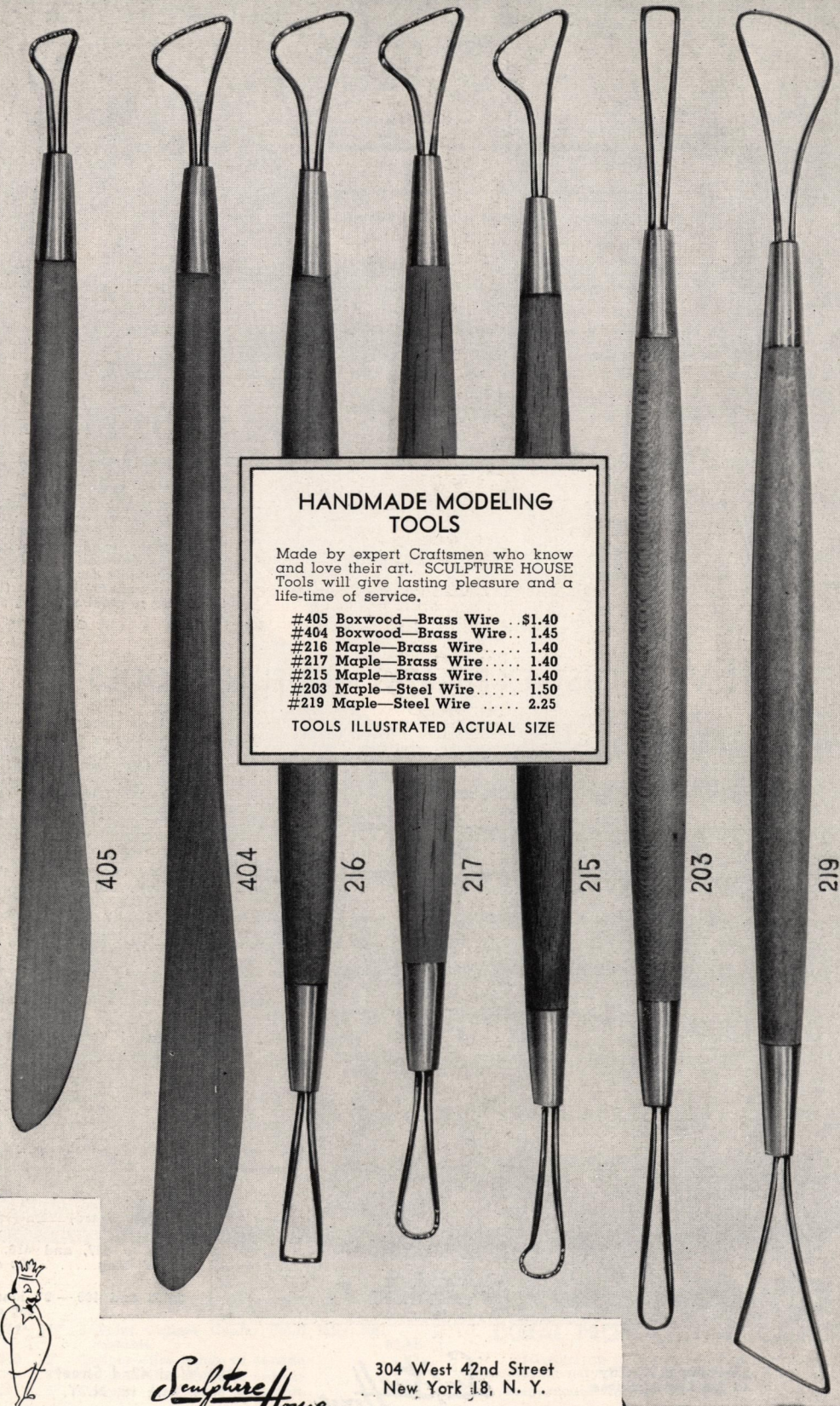
#400 to 407, and 410, 411 6" long20c each

#408 and 409 — 8" long 35c each

A Policy of Quality
at the Lowest Prices

Sculpture House

304 West 42nd Street
New York 18, N. Y.



HANDMADE MODELING TOOLS

Made by expert Craftsmen who know and love their art. SCULPTURE HOUSE Tools will give lasting pleasure and a life-time of service.

- #405 Boxwood—Brass Wire ..\$1.40
- #404 Boxwood—Brass Wire.. 1.45
- #216 Maple—Brass Wire..... 1.40
- #217 Maple—Brass Wire..... 1.40
- #215 Maple—Brass Wire..... 1.40
- #203 Maple—Steel Wire..... 1.50
- #219 Maple—Steel Wire..... 2.25

TOOLS ILLUSTRATED ACTUAL SIZE



HANDMADE MODELING TOOLS

The SCULPTURE HOUSE stamp on every tool is a guarantee of quality and your assurance of a lower than market price.

- #221 Steel Wire\$2.25
- #222 Steel Wire 2.25
- #205 Brass Wire 1.95
- #212 Brass Wire 1.95
- #213 Brass Wire 1.95
- #214 Brass Wire 1.95

TOOLS ILLUSTRATED ACTUAL SIZE

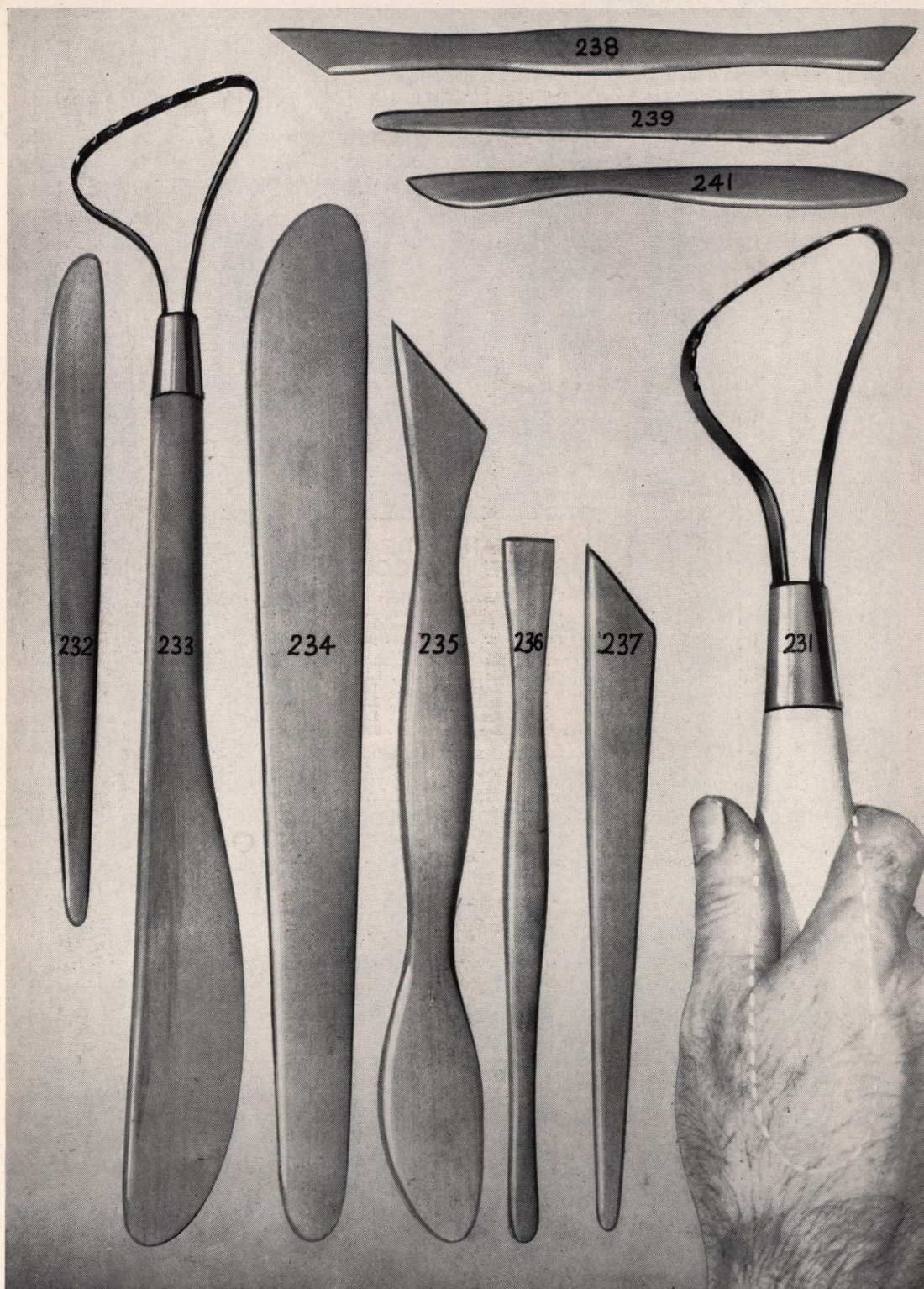


Sculpture House

304 West 42nd Street
New York 18, N. Y.

Sculpture House

304 West 42nd Street
New York 18, N. Y.



HANDMADE MODELING TOOLS OF GENUINE BOXWOOD

#231 Rock Maple, Steel End...	12" long	\$3.50	#235 Boxwood	10 1/2" long	\$1.55	#239 Boxwood	6 1/2" long	\$.45
#232 Boxwood Tool	8" long	.55	#236 Boxwood	8 1/2" long	.65	#241 Boxwood	5 3/4" long	.50
#233 Boxwood, Steel End...	14" long	3.75	#237 Boxwood	8" long	.55			
#234 Boxwood	12" long	1.55	#238 Boxwood	8" long	.55			

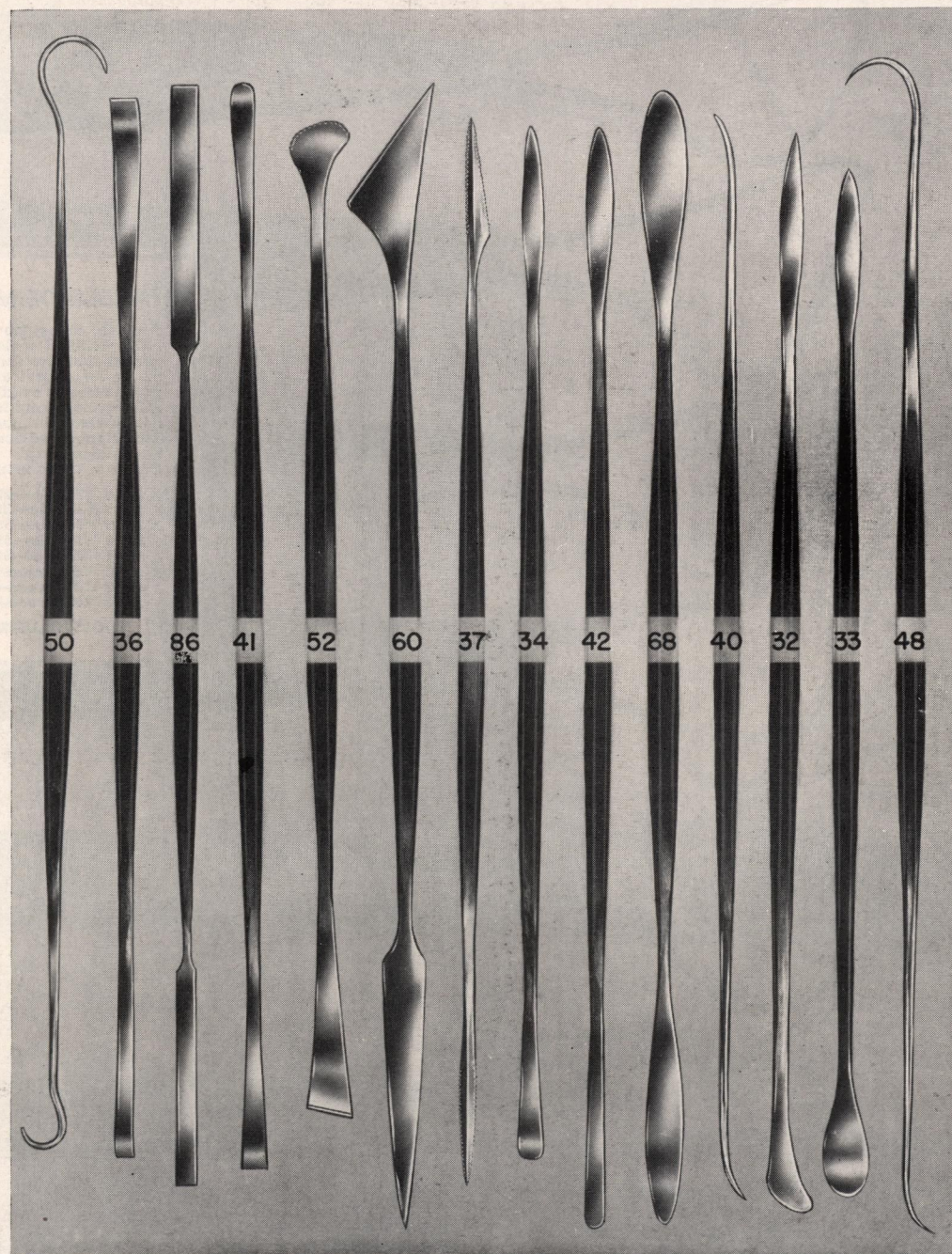


Jolly King BRAND

HAND FORGED

STEEL TOOLS FOR CERAMICS AND PLASTER

FOR MODELING AND RETOUCHING



FINEST QUALITY TOOL STEEL — HARDENED AND TEMPERED
TOOLS ILLUSTRATED ACTUAL SIZE

#50	\$1.75	#52	\$1.55	#34	\$1.65	#40	\$1.55
#36	1.55	#60	1.65	#42	1.55	#32	1.55
#86	1.45	#37	1.50	#68	1.65	#33	1.65
#41	1.45							#48	1.75

HANDMADE MODELING TOOLS

You will enjoy the "feel" of these SCULPTURE HOUSE tools. Practical designing, perfect balance and rugged construction insure long service and satisfaction. Tempered steel or solid brass wire as selected. All ferrules solid seamless brass permanently fixed to handles. Wood modeling ends of imported Boxwood. Double-end tools have Rock Maple handles.

Compare these money saving values.

#218	Maple—Steel Wire	\$2.25
#219-A	Maple—Steel Wire	2.75
#210	Maple—Steel Wire	2.85
#209	Maple—Steel Wire	2.85
#211	Maple—Steel Wire	2.85
#401	Boxwood—Brass Wire	2.95
#402	Boxwood—Brass Wire	2.55
#403	Boxwood—Brass Wire	1.95

TOOLS ILLUSTRATED ACTUAL SIZE

218

219A

210

209

211

401

402

403



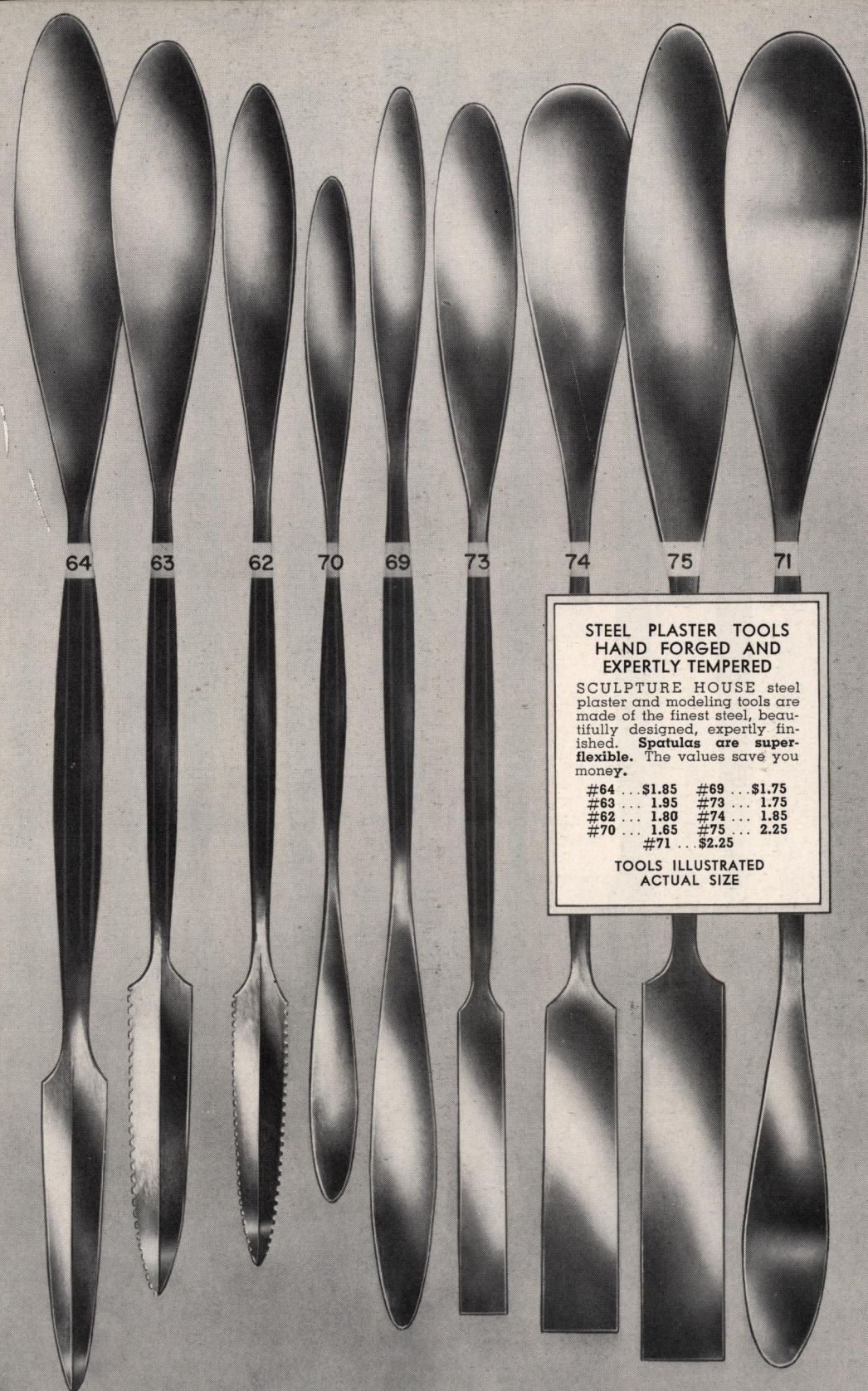
#56\$1.95
 #58 1.85
 #65 1.85
 #51 1.65
 #53 1.75
 #44 1.55

FINEST QUALITY STEEL PLASTER TOOLS
 HAND FORGED AND EXPERTLY TEMPERED
 TOOLS ILLUSTRATED ACTUAL SIZE

Sculpture House

304 West 42nd Street
 New York 18, N. Y.

#59\$1.65
 #61 1.65
 #57 1.55
 #85 1.65
 #80 1.75
 #79 1.85

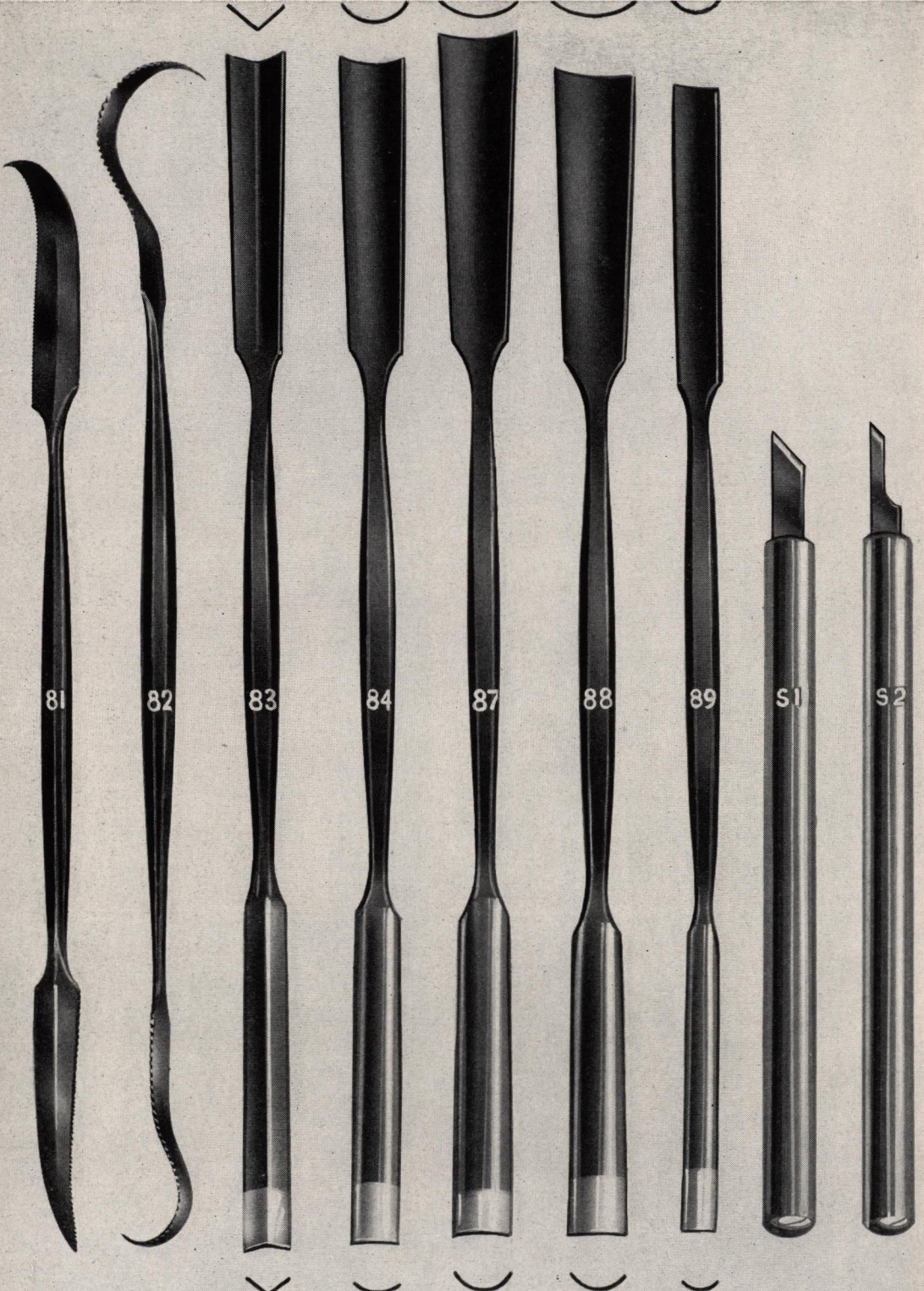


STEEL PLASTER TOOLS
 HAND FORGED AND
 EXPERTLY TEMPERED

SCULPTURE HOUSE steel plaster and modeling tools are made of the finest steel, beautifully designed, expertly finished. **Spatulas are super-flexible.** The values save you money.

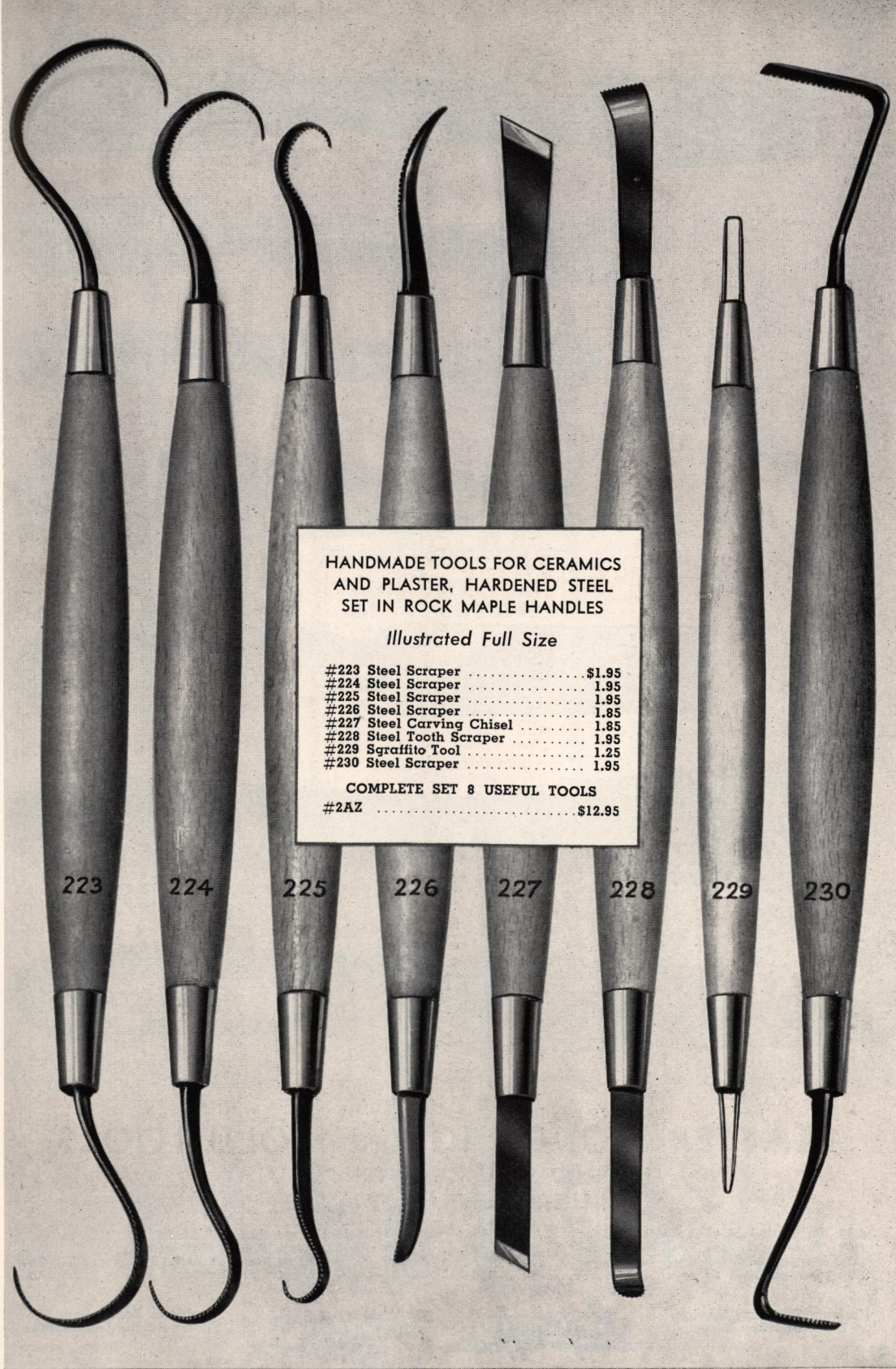
#64 ...\$1.85 #69 ...\$1.75
 #63 ... 1.95 #73 ... 1.75
 #62 ... 1.80 #74 ... 1.85
 #70 ... 1.65 #75 ... 2.25
 #71 ... \$2.25

TOOLS ILLUSTRATED
 ACTUAL SIZE



HANDFORGED STEEL TOOLS KNIFE EDGE CUTTERS

#81 Scraper, fine teeth each end.....	\$1.95	#87 Gouge	\$1.95
#82 Scraper, medium teeth each end.....	2.25	#88 Gouge	1.95
#83 Parting Tool	2.25	#89 Gouge	1.95
#84 Gouge	1.95	#S1 Knife Edge Cutter45
		#S2 Knife Edge Cutter45

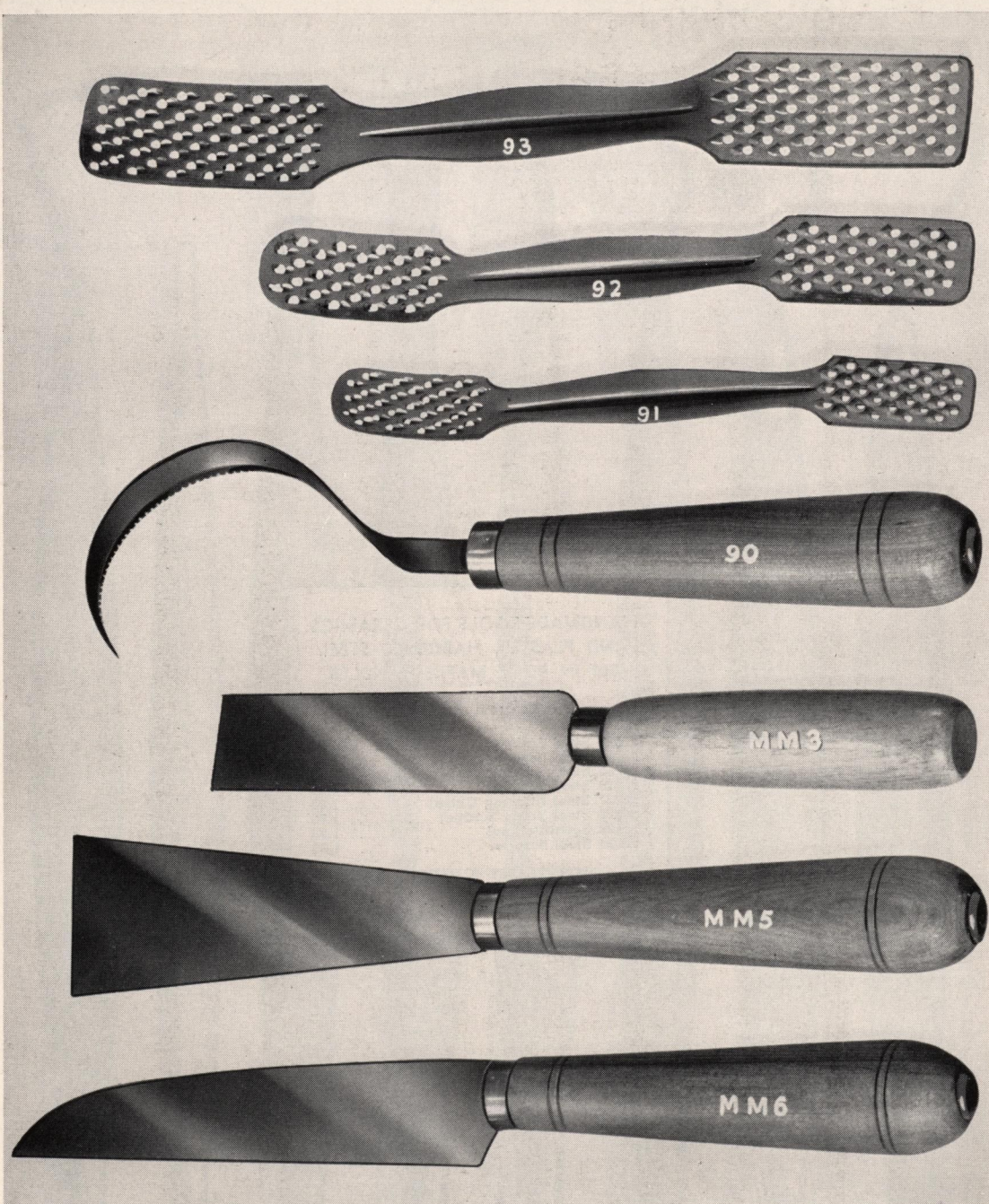


HANDMADE TOOLS FOR CERAMICS
AND PLASTER, HARDENED STEEL
SET IN ROCK MAPLE HANDLES

Illustrated Full Size

#223 Steel Scraper\$1.95
 #224 Steel Scraper 1.95
 #225 Steel Scraper 1.95
 #226 Steel Scraper 1.85
 #227 Steel Carving Chisel 1.85
 #228 Steel Tooth Scraper 1.95
 #229 Sgraffito Tool 1.25
 #230 Steel Scraper 1.95

COMPLETE SET 8 USEFUL TOOLS
 #2AZ\$12.95



PLASTER MODELING and MOLD TOOLS

HARDENED STEEL . . . SUPERIOR QUALITY
ILLUSTRATIONS ABOUT 1/2 SIZE

#93 Perforated Steel Rasp for Plaster\$2.45	#MM3 Mold Makers Knife, 4" blade 1.50
#92 Perforated Steel Rasp for Plaster 1.95	#MM5 Mold Makers Chisel, 1 3/4" wide 2.85
#91 Perforated Steel Rasp for Plaster 1.50	#MM6 Mold Makers Knife, 6" blade 2.85
#90 Curved Steel Scraper 3.25	#9AZ Complete Set 7 Plaster Tools 14.95

National Sculpture Services
Standard Clay Mines

Sculpture House

304 West 42nd Street
New York 18, N. Y.

Sculptors' Bronze Foundry
Platex Rubber Laboratories



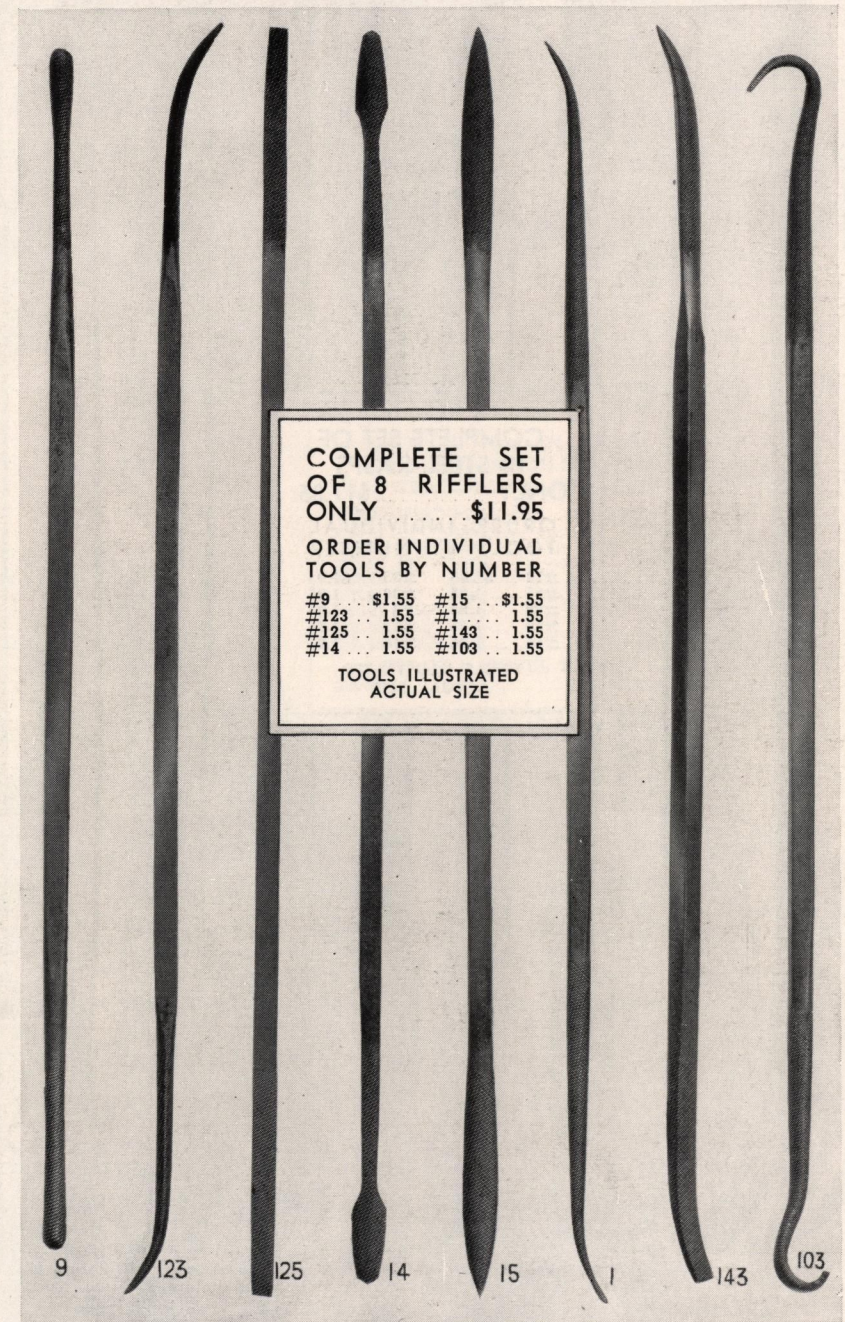
Jolly King BRAND

STEEL RIFFLERS

for PLASTER · WOOD · STONE · METAL

HIGHEST quality steel rifflers designed especially for shaping delicate contours, for fine retouching and for removing seam lines on plaster casts, wood, stone and metal models. Available in the most

useful shapes. A set of these fine rifflers will prove invaluable to every sculptor. Buy the complete set today and save money!



COMPLETE SET
OF 8 RIFFLERS
ONLY\$11.95

ORDER INDIVIDUAL
TOOLS BY NUMBER

#9	\$1.55	#15	\$1.55
#123	1.55	#1	1.55
#125	1.55	#143	1.55
#14	1.55	#103	1.55

TOOLS ILLUSTRATED
ACTUAL SIZE

Sculpture House

304 West 42nd Street
New York 18, N. Y.

FINEST QUALITY IMPORTED STEEL RASPS FOR PLASTER · WOOD · STONE · METAL

COMPLETE SET OF
10 STEEL RASPS
ONLY \$17.85

ORDER INDIVIDUAL
TOOLS BY NUMBER

#13 ... \$1.95	#35 ... \$1.95
#31 ... 1.95	#36 ... 1.95
#32 ... 1.95	#2 ... 1.95
#33 ... 1.95	#22 ... 1.95
#19 ... 1.95	#16 ... 1.95

TOOLS ILLUSTRATED
ACTUAL SIZE

13 31 32 33 19 35 36 2 22 16

A Policy of Quality
at the Lowest Prices

Sculpture House

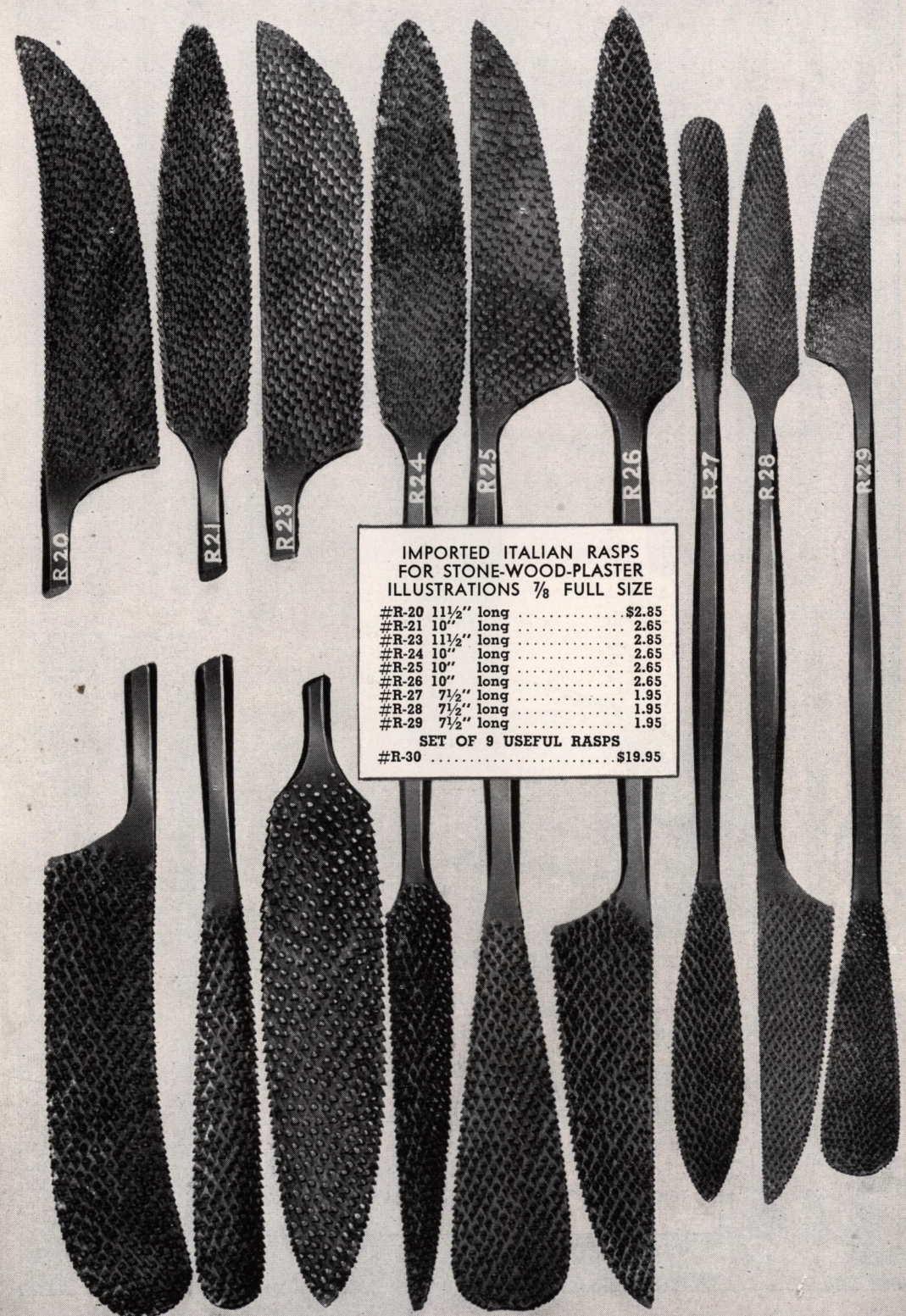
304 West 42nd Street
New York 18, N. Y.

IMPORTED ITALIAN RASPS
FOR STONE-WOOD-PLASTER
ILLUSTRATIONS $\frac{7}{8}$ FULL SIZE

#R-20 11½" long \$2.85
#R-21 10" long 2.65
#R-23 11½" long 2.85
#R-24 10" long 2.65
#R-25 10" long 2.65
#R-26 10" long 2.65
#R-27 7½" long 1.95
#R-28 7½" long 1.95
#R-29 7½" long 1.95

SET OF 9 USEFUL RASPS

#R-30 \$19.95







Jolly King BRAND

CASTING MATERIALS



PRISTINE WHITE CASTING PLASTER

Extra fine and extra white casting plaster for truly white, strong, smooth surfaced casts. Used by professional casters everywhere, PRISTINE WHITE PLASTER is free of all impurities, slow-setting, and perfect in every respect for quality work. Packed in damp-proof containers . . . will keep for many months without lumping or hardening. Used exclusively at SCULPTURE HOUSE.

5 Lb. Container	60c
50 Lb. Bag	\$2.75
100 Lb. Bag	3.95

VATICAN ART CASTING STONE

Developed by SCULPTURE HOUSE, this amazing new casting material produces truly stone-hard casts with sparkling, beautiful texture. VATICAN ART CASTING STONE is easy to use — just mix with water in accordance with complete instructions on label, then pour into plaster, rubber or gelatine molds. Available in Crystal White, French Buff, Terra Cotta, Grey-Green, Vatican Black. Specify color.

10 Lb. Container	\$2.25
25 Lb. Container	4.85
50 Lb. Container	7.85
100 Lb. Container	15.00

FLEXITE GELATINE

The strongest and finest gelatine for flexible molds. FLEXITE GELATINE may be re-used many times.

3 1/2 Lb. Package	\$3.35
Larger Quantities	.95c Per lb.

HYDROSTONE

For extremely strong castings, white only.

5 lbs.	\$1.00
25 lbs.	4.50
50 lbs.	7.95

SEPAROL

Used in SCULPTURE HOUSE Shops to produce smooth white casts. The perfect oil base separator for plaster or gelatine molds. Directions on package.

1/4 Pint Jar	35c
Pint Jar	95c
Quart Jar	\$1.85

MOLD LOTION

Improved water base separating lotion for quick, easy and complete release of casts from plaster molds.

1/4 Pint Jar	40c
1/2 Pint Jar	75c
Quart Jar	\$1.50

BONE EMULSION

A full tablespoon of Bone Emulsion in each quart of water produces bone-hard and bone-strong plaster casts. Add to wet modeling clay to form self-hardening clay.

1/4 Pint Jar	30c
Pint Jar	85c
Quart Jar	\$1.50

TANOL

A ready-to-use astringent necessary for tanning surface of gelatine molds to make them water resistant. Complete directions on package.

1/4 Pint Jar	30c
1/2 Pint Jar	55c
Quart Jar	\$1.25

FLEXIBLE BRASS MIXING BOWLS

SCULPTURE HOUSE takes pride in offering these seamless bowls spun of tough, springy brass. Slight pressure on sides of these flexible bowls instantly cleans them of hardened plaster. Necessary to

every studio or shop when mixing and pouring plaster, they are the type professionals use. Don't spoil your casting batches with makeshift receptacles—order a set of these bowls today.

#B1—6" Diameter	\$1.05
#B2—8" Diameter	1.50
#B3—10" Diameter	2.50
#B4—14" Diameter	4.25
Set of Four Bowls	8.95

A Policy of Quality
at the Lowest Prices

Sculpture House

304 West 42nd Street
New York 18, N. Y.

PLIATEX FLUID RUBBER FOR MOLDS

NEWLY DEVELOPED — A NON-SHRINKING
NATURAL RUBBER FOR FLEXIBLE MOLDS

PLIATEX is the only mold making rubber that will not shrink. PLIATEX gives greater tensile strength and flexibility — WITHOUT HEAT CURING — than any other rubber for molds. It is the rubber professionals demand. PLIATEX is extremely easy to use. Absolutely no previous experience is necessary to make a perfect mold. Complete instructions for use appear on every package.

Just brush a few coatings of PLIATEX over any model, apply a coating of PLIATEX Paste Filler, and you have a flexible rubber mold that is easily removed from undercuts or projections . . . a mold that will reproduce even the finest details of the original model in hundreds of clean, sharp casts.

PURCHASE PLIATEX MATERIALS IN THESE MONEY-SAVING KITS



PLIATEX JUNIOR KIT

With the PLIATEX Junior Kit you can make all types of elementary rubber molds quickly and easily. Complete instructions included.

- 1 Pint PLIATEX Fluid Rubber
- 1 Lb. Package PLIATEX Filler
- 1/2 Pint Jar PLIATEX Separator
- Liberal Supply Mold Dividing Brass
- 1/4 Pint Brush Cleaner-Mold Lotion

ECONOMY PRICE \$3.85



PLIATEX CRAFT KIT

The complete PLIATEX Craft Kit is the most economical for advanced rubber mold making. Instructions included.

- 2 Quarts PLIATEX Fluid Rubber
- 1 Lb. Package PLIATEX Filler
- 1 Pint Jar PLIATEX Separator
- Liberal Supply Mold Dividing Brass
- 1/4 Pint Jar PLIATEX Brush Cleaner and Mold Lotion
- 1/4 Pint Jar BONE EMULSION for making Bone Hard Plaster Casts
- Handmade Boxwood Modeling Tool

MONEY-SAVING PRICE \$7.95

PRICE LIST OF INDIVIDUAL ITEMS

PLIATEX FLUID RUBBER

It is a genuine economy to buy PLIATEX. It is the one rubber that always gives results.

Pint Jar	\$1.55
Quart Jar	2.85
Gallon Jar	8.80
5 Gal. Lots	20% Disc.

PLIATEX PASTE FILLER

Mix with PLIATEX Fluid Rubber as directed to form paste for making thick-walled rubber molds.

1 Pound Pkg.	45c
5 Pound Pkg.	\$2.00

PLIATEX SEPARATOR

Prevents mold from sticking to model or to casts. Will not harm rubber.

1/4 Pint Jar	55c
1 Pint Jar	\$1.25
Quart Jar	1.85

PLIATEX BRUSH CLEANER AND MOLD LOTION

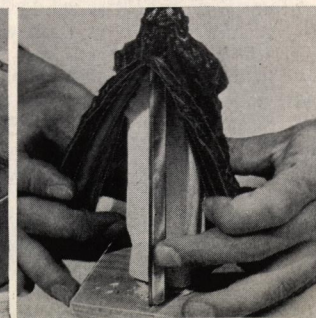
Specially prepared solvent to prevent PLIATEX Rubber from coagulating on brush. Excellent as separating lotion for plaster molds.

1/4 Pint Jar	35c
Pint Jar	95c
Quart Jar	\$1.65

ILLUSTRATED INSTRUCTIONS FOR ALL TYPES OF MOLDS



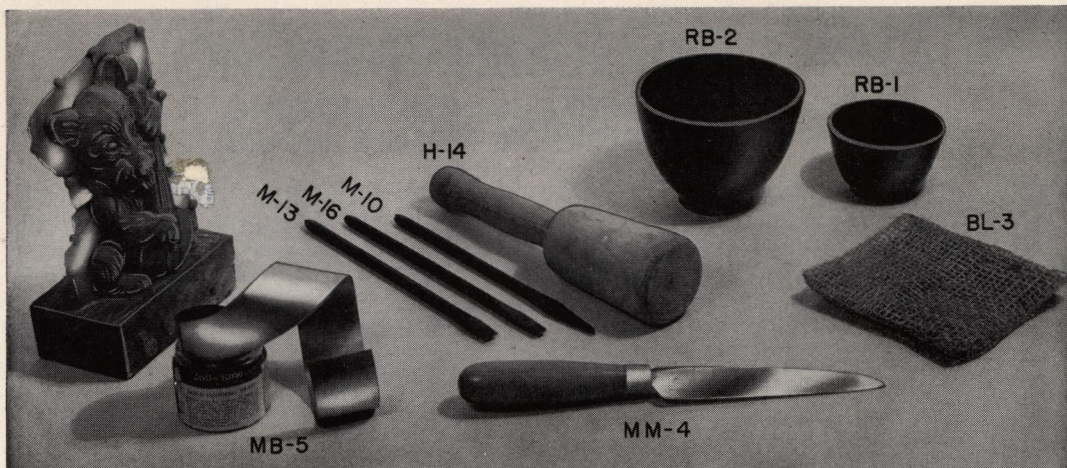
PAINTING ON RUBBER



REMOVING COAT MOLD

Sculpture House
304 West 42nd Street
New York 18, N. Y.





BRASS FOR DIVIDING MOLDS

Thin, flexible brass for making clean-cut mold divisions. Insert into model to form a division line prior to making the mold.

- MB-5—Trial Size Roll (1½" wide x 22 ft. long)... 75c
 MB-6—Utility Roll (1½" wide x 44 ft. long)... \$1.45
 MB-7—Economy Roll (1½" wide x 88 ft. long)... 2.85

MOLD MAKERS KNIFE

Highest quality tempered steel blade 4" long set firmly into maple handle. For trimming plaster molds and casts, etc.

- MM-4 \$1.85

CHIPPING TOOLS

Steel chisels designed for chipping off waste molds. Set includes three handy chisels plus a light-weight hardwood chipping mallet.

- M10-13-16—Individual Chisels ea. \$1.15
 H-14—Hardwood Chipping Mallet 2.65
 Complete Set only 5.85



Jolly King BRAND

PLIATEX CASTING RUBBER FOR MAKING UNBREAKABLE CASTS — ADVERTISING DISPLAYS—TOYS—NOVELTY FIGURES



Make your own unbreakable rubber statuettes with this tested new casting rubber. Make one or hundreds of casts from regular plaster molds.

With PLIATEX Casting Rubber (perfected by SCULPTURE HOUSE) you can reproduce hundreds of flexible, semi-flexible, or hard casts from plaster molds. PLIATEX Casting Rubber and PLIATEX Casting Filler are mixed in varying quantities to produce desired flexibility in finished cast. Casting mixture is poured into plaster mold following the usual procedure for slip casting, allowed to "build" a few minutes. Excess solution is poured off and cast allowed to become leather-hard, after which it is removed from mold. When thoroughly dry, cast may be beautifully decorated with DELLA ROBBIA Glazes. Very easy to use—start your own commercial enterprise—the easiest mass production materials known for light, low cost and unbreakable casts.

TRIAL SIZE RUBBER CASTING KIT: 1 Quart Pliatex Casting Rubber plus ½ Gallon Pliatex Casting Filler \$4.95

- Pliatex Casting Rubber—1 quart 2.85
 Pliatex Casting Rubber—per gallon 8.80
 Pliatex Casting Filler—per gallon 2.75
 Rubber or Filler in 5 gallon lots 20% discount
 Rubber or Filler in drums (50 gallons) 50% discount

Copyright
1949

Sculpture House

304 West 42nd Street
New York 18, N. Y.

Printed
in U.S.A.

BRONZE CASTING OF HIGH QUALITY

Bronze Castings by Sculpture House are made at the client's option by the French Sand process or by Cire-Perdue (lost wax). Prices for Bronze Casting at Sculpture House are extremely reasonable. For beginner and amateur there is a special service at low cost.



MARBLE BASES of Verde Antique, Belgian Black and other marbles made to order. Prices range from \$10.00 to \$25.00. Bases are polished, holes bored and bottoms are flocked to prevent scratching.

BAKELITE BASES made to order — Jet Black Bakelite laminated under pressure to Plywood. Is used to make beautiful and durable bases. Prices range from \$4.85 to \$12.85.



AMALIA FODOR, Hungarian Sculptress specializing in Portraits, was commissioned to do the head of Eugene Fenyves, Present Master of Ehlers Lodge. Bronze Casting by Sculpture House.

← GEORG EHRLICH whose work appears in Museums on the Continent, London and the U. S. was commissioned to execute this 6 ft. Bronze for the Columbus Gallery of Art. Bronze Casting by Sculpture House.

FRANCES L. WADSWORTH, famous American Sculptress, was commissioned to do this Bird Bath for Mrs. W. T. Reed, Jr., of Sabot Hill, Va. Bronze Casting by Sculpture House.



COMPLETE SERVICE TO SCULPTORS THAT REFLECTS TRADITIONAL CRAFTSMANSHIP

Whether you are a talented beginner or an accomplished sculptor, you will find our many years of experience in casting, enlarging and reducing all forms of sculpture are your guarantee of workmanship in the finest tradition of the art.

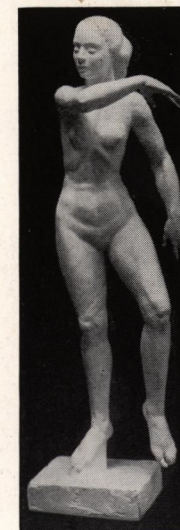
It is our firm belief that only by maintaining prices at low pre-war levels can wide popular interest in sculpture be achieved. To promote such interest, SCULPTURE HOUSE is dedicated to a policy of fine craftsmanship at lowest possible cost.

The head of the Casting Department of SCULPTURE HOUSE is a man who has had more than twenty years of experience in mold-making and casting all types of sculptured work. All work performed by SCULPTURE HOUSE is guaranteed to give complete satisfaction to the sculptor.

WE SUPPLY THE FOLLOWING SERVICES

Plaster	Stone	Casting in	Lead	Rubber
	Enlarging	Bronze	Reducing	
Piece Molds		Rubber Molds		Gelatine Molds
		Galvano		
		Bronzing of Plaster Casts		
		Coloring of Casts		
		Carving in Stone and in Wood		
		Armature Construction		

For further information, or for immediate service, write
 SCULPTURE HOUSE, 304 West 42nd Street, New York 18, N.Y.
 or telephone Longacre—3-3330.



"Dancing Girl" by Carl Cramer.
Casting by SCULPTURE HOUSE.

National Sculpture Services
Standard Clay Mines

Sculpture House

304 West 42nd Street
New York 18, N. Y.

Sculptors' Bronze Foundry
Pliatex Rubber Laboratories

LOOK FOR THIS TRADE MARK...



Jolly King BRAND

IT IS YOUR GUARANTEE OF HIGHEST QUALITY
AT THE LOWEST POSSIBLE PRICES!

COVER PHOTOS

Heroic sculptures "Swinging the Mail" and "Mail Handler" cast in aluminum with gold leaf patina erected Evanston Post Office. The work of **Professor Robert I. Russin**, Department of Art, University of Wyoming, Laramie, Wyoming.