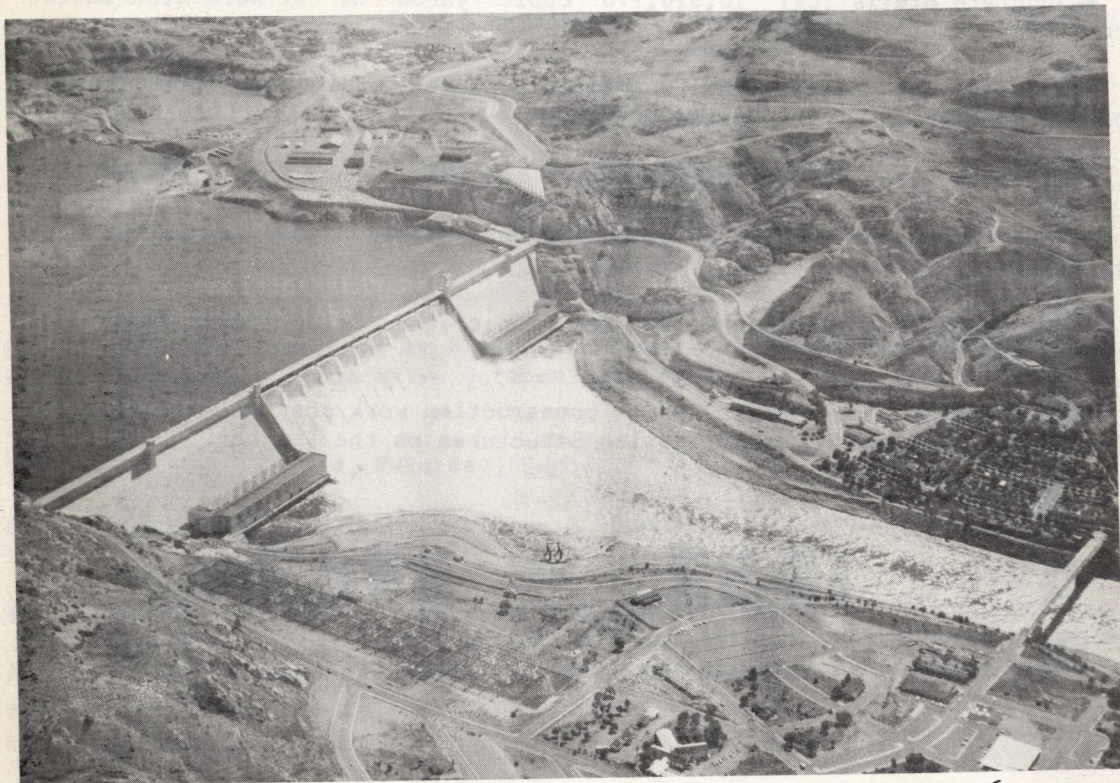


Anniversary 30th

Grand Coulee Dam Columbia Basin Project



October 11th and 12th, 1963

GRAND COULEE DAM

Grand Coulee Dam, the foremost multi-purpose power producer on the Columbia River, is three decades old this year.

Reared during a depression as the key structure in a vast irrigation project the 22,500,000 ton structure has served its country admirably.

As a diversion structure the Dam has made possible the irrigation of a vast acreage of land previously arid.

Name plate rating on each of the Dam's 18 giant generators is 108,000 KVA, making its power plant one of the most productive in the world.

Downstream navigation and flood control benefits are also important-by-products derived from the Dam.

Concrete statistics: 10,320,776 cubic yards of it were used in the construction of the Dam.

Occupies more space than 150 million people--or more than three-fourths of the population of the United States.

Ultimate planned power production of the Dam is more than 5,574,000 KVA.

Labor force involved in building the Dam was over 7,000 men in the late thirties.

Engineers have proclaimed the Dam one of the Seven Modern Wonders of the World.

Essentially completed in 1941, construction work soon shifted from the Dam to the development of Irrigation Structures on the Project.

**D
a
m**

1933 - 1963

OCTOBER 11th

4:00 - 8:00 p.m.	Registration (Information Booth)
7:30 p.m.	Football (Greene Field) Coulee Dam vs Grand Coulee
9:00 p.m.	Dance (City Hall)

OCTOBER 12th

10:00 a.m.	Parade
11:00 a.m.	Tours and Exhibitions
12:30 p.m.	Luncheon (City Hall)
2:00 p.m.	ANNIVERSARY KEYNOTES Featuring Assistant Secretary of the Interior John Carver
4:00 - 8:00 p.m.	Public Dinner (City Hall)
8:00 p.m.	Bowling Exhibition (Coulee Bowl)
9:00 p.m.	Dance (City Hall)

Exhibits will be displayed at Right Powerhouse and Coulee Dam City Hall on Friday, Saturday and Sunday -- October 11, 12, 13.

Tours continuous Friday, Saturday, Sunday.

Bowling Saturday, 10:00 a.m. until -- ? Sunday, 12 noon.

The Registration Booth will be open from 4:00 to 8:00 p.m., Friday, October 11th; from 9:00 a.m. to 1:00 p.m. and 4:00 to 6:00 p.m., Saturday October 12. All Visitors are urged to register. Any questions will be answered at the Information Booth.

THE COLUMBIA BASIN PROJECT

Columbia Basin Project will ultimately encompass 1,029,000 irrigable acres of land.

Over the last twenty-five years since the first irrigation water came to the land; water has been made available to 457,000 irrigable acres of land.

Lands once producing only a little dry land wheat and a limited variety of desert grasses are today raising over 50 varieties of crops.

Urgently needed food to help feed a hungry world is being raised by the tons--including crops such as grains, sugar, potatoes and alfalfa.

Meat production on the Project has boomed. Last year, over 85,000 head of cattle were fed on Project feed lots.

By partially controlling both the amount of water and the time of the delivery of water, irrigation has proved an excellent method of farming in the Basin.

In steadily increasing quantities fish and wildlife--particularly ducks and upland game birds--have come to the Project's fields, seep lakes and reservoirs.

And close upon the heels of the game have come the sportsmen by the carloads from all over the State.

Basin communities have grown considerably since the beginning of the Project. Within the last ten years 3 new towns have grown out of the sagebrush.

As farm products produced in the Project have increased, processing plants have been attracted to the area to freeze, package and ship these products.

Service industries such as retail stores and schools have moved to the Project.

Increased crop production, an increased tax base, increased big and small business opportunities---all mean a healthier economy for the Pacific Northwest and the country.

Nearly half of the Project is undeveloped, leaving approximately 575,000 acres of land to be watered---a guarantee of future Project development.