

Wonderful

COLORFUL

GRAYS HARBOR



GREATER
YAKIMA CHAMBER OF COMMERCE
P. O. Box 1498
YAKIMA, WASHINGTON 98901

and the
WASHINGTON COAST

Infinite Variety

awaits the fun-seeking vacationer

Plan to stay an extra day or week in Grays Harbor's inviting and friendly hotels, motels, trailer courts, or camp sites in state-owned and operated parks.

Lake Quinault recreation area.



Razor clams lure families.



Indian-guided fishing trips.



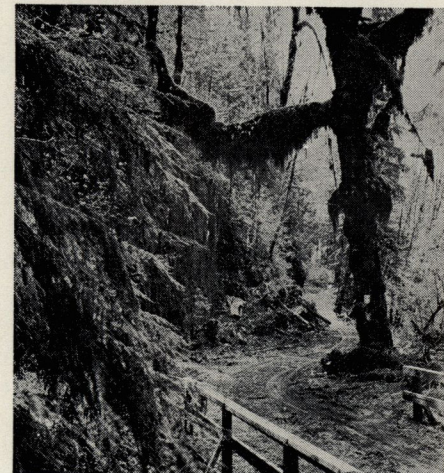
Cranberry culture is novel.



World's finest crabs caught.



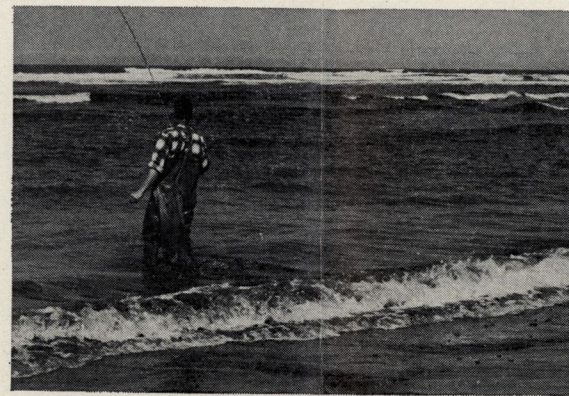
Westport salmon catch.



Rain forests in Olympic park.



Dipping for smelt is rewarding experience.



Surf fishing attracts young and old.



Camping facilities accommodate thousands.



Serenity grips the equestrienne on the beach at sunset.

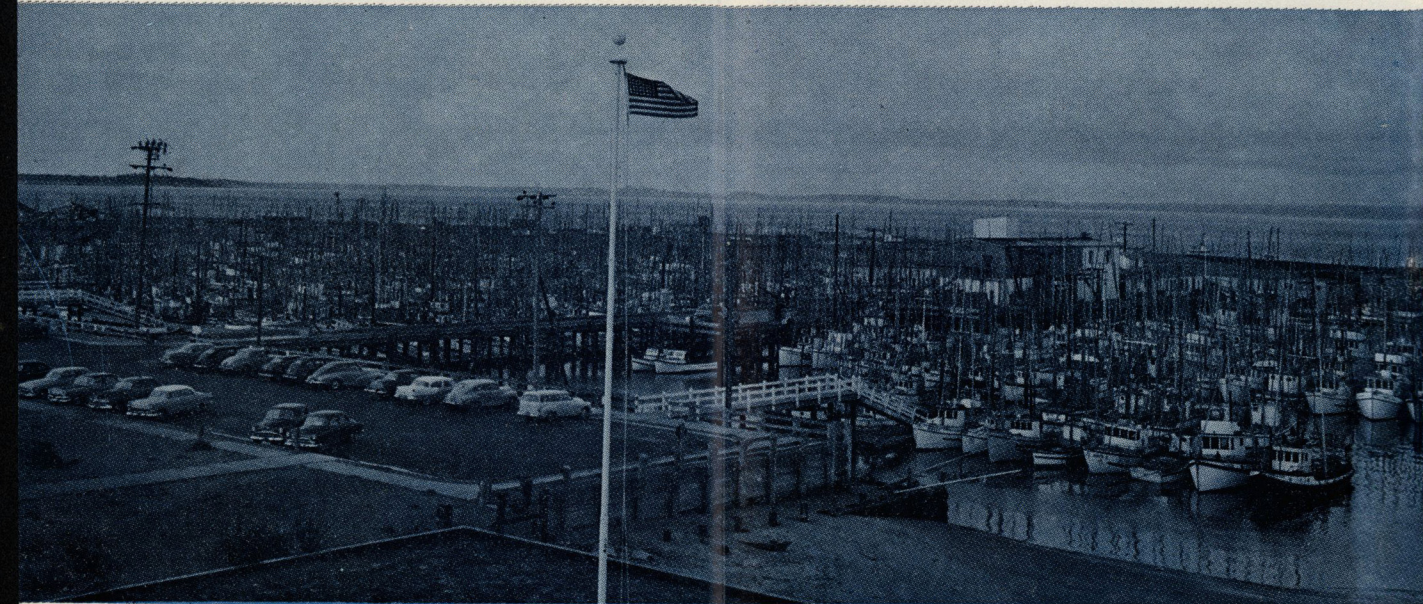
Alpine wild flowers in the lee of snow-capped Olympic peaks.

PHOTOS courtesy Dell Mulkey, Jones Photo, National Park Concessions and Washington State Dept. of Commerce and Economic Development, COLOR PLATES by Olympic Engraving Co., Bremerton

Something for Everyone...

in the beautiful Grays Harbor Country!

the Lure of **MOUNTAINS** *and* **SEA...**



The fleet's in at Westport!

COME TO GRAYS HARBOR . . . the area made famous by Robert Gray, the intrepid explorer who not only discovered the mouth of the Columbia river, but who went on to find this great harbor formed by the Chehalis river and its tributary streams. North and south of the harbor are endless stretches of gentle-sloping ocean beaches . . . the most accessible ocean beaches in the State of Washington. Here there is something of interest for all members of the family . . . digging for the succulent razor clam-of which there is no equal in all the world . . . surf fishing or deep sea fishing from the deck of a charter boat for the elusive, hard-fighting King salmon, or from your own boat in the quieter waters of the harbor itself. If you are the goggle-eyed type, there is plenty upon which to feast your eyes . . . scenery that is

spectacular, i. e.: long vistas of the seashore, mountain-encompassed Lake Quinalt, the last wilderness of the Olympic National Park were rugged terrain, and snow-capped peaks spawn a myriad of swift fish-laden rivers and streams; where the hiker will find rewarding challenges, and the camper will exalt over the serenity and grandeur of the park's moss-draped rain forest and its unspoiled fastnesses.

With all of this there are many other wonders on every hand . . . cranberry bogs that produce the familiar "Ocean Spray" cranberries . . . the home of the incomparable Dungeness crab, the finely-advanced pulp and paper industry, veneers and plywood through whose plants guided tours may be arranged.

FOR FURTHER INFORMATION write Grays Harbor Chamber of Commerce, P. O. Box 920, Aberdeen, Washington; or call LEnox 2-1924.

COME AND SEE US SOON

Wonderful **COLORFUL**
GRAYS HARBOR



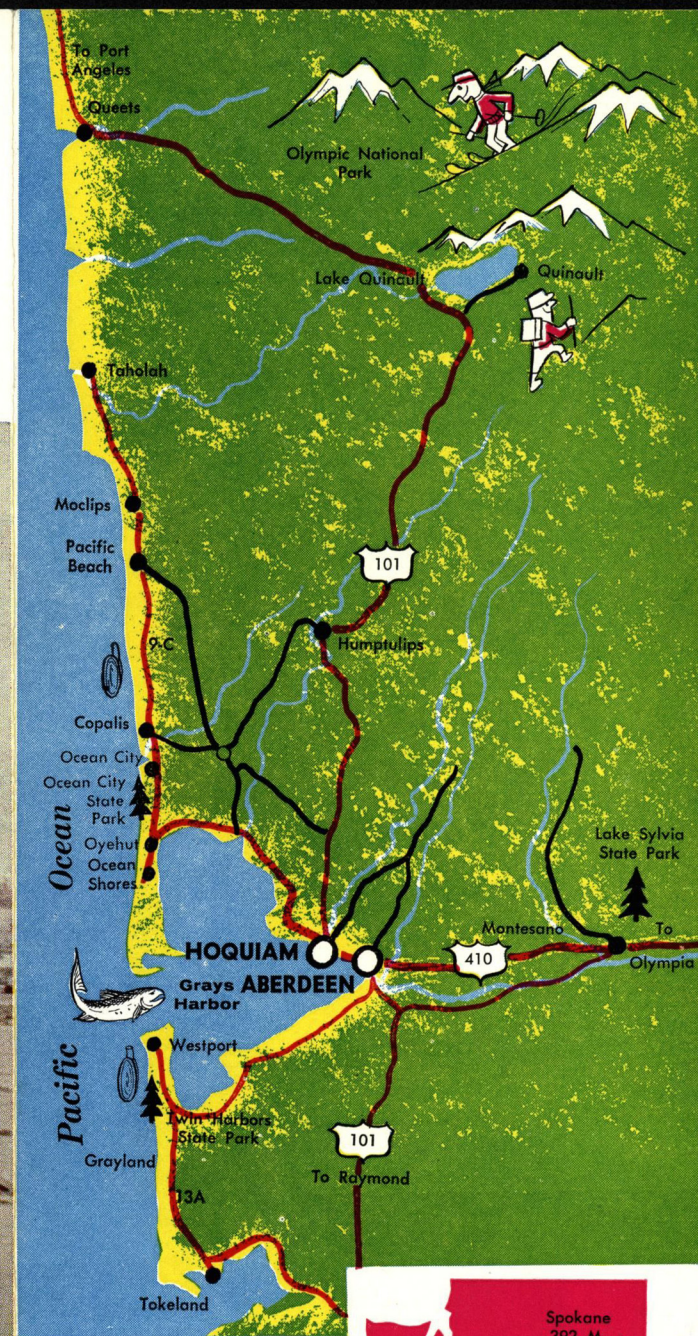
GREATER
YAKIMA CHAMBER OF COMMERCE
P. O. Box 1498
YAKIMA, WASHINGTON 98901

and the
WASHINGTON COAST

WORLD PRESS

Wonderful **COLORFUL**
GRAYS HARBOR

and the
WASHINGTON COAST



Grays Harbor

IS EASY TO GET TO!

BY CAR: From Canada, Midwest, Eastern Wash., Seattle-Tacoma U.S. 99 and U.S. 410; from Calif.-Oregon, U.S. 99 and U.S. 101.

BY PLANE: Scheduled service — West Coast Airlines connecting Seattle, Portland; private planes — Bowerman Field, Hoquiam, landing strips at Westport and Ocean Shores.

BY BUS: Harbor Lines busses connect with major bus lines in Olympia.