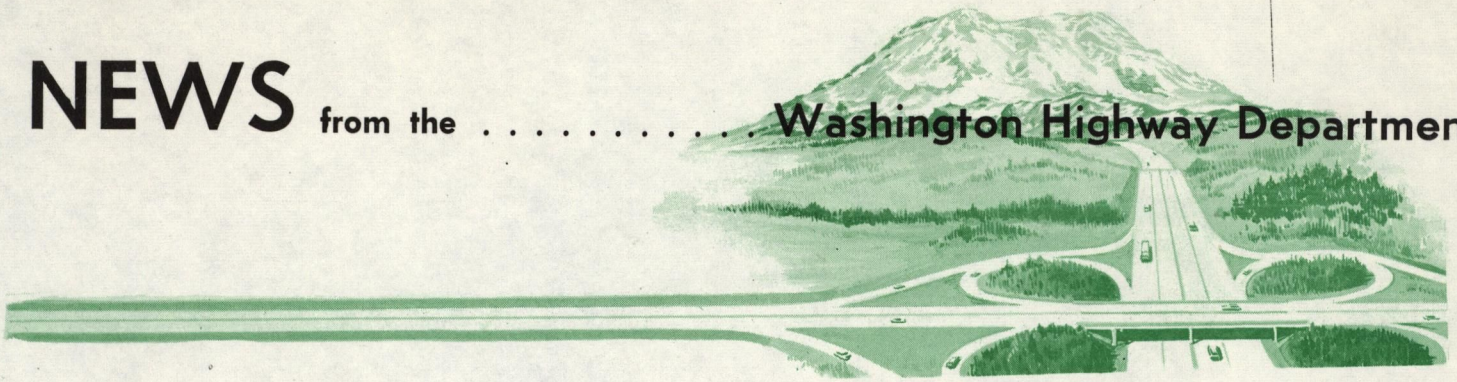


# NEWS

from the . . . . . Washington Highway Department



November 15, 1968

Dear Editor:

Our printer was late in printing programs for two highway dedication projects in your area. Knowing that you wanted this information, I am enclosing xerox copies of the program for your use immediately.

Please call us if you need any further information. We shall supply the regular printed program as soon as it is available. Please call me or Ed Murphy for further information at 753-6050.

Sincerely yours,

A handwritten signature in blue ink, appearing to read "W B Gasman".

William B. Gasman  
Acting Public Information Director

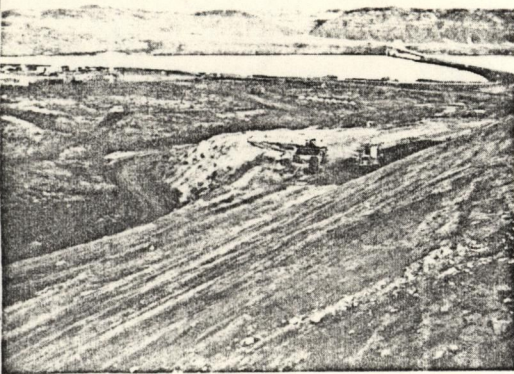
WG/ms

FOR MORE INFORMATION . . . . .

Public Information Officer  
Highways-Licenses Building  
Olympia — Phone 753-6050

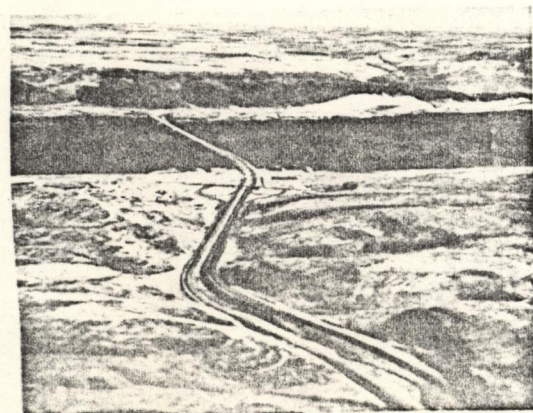
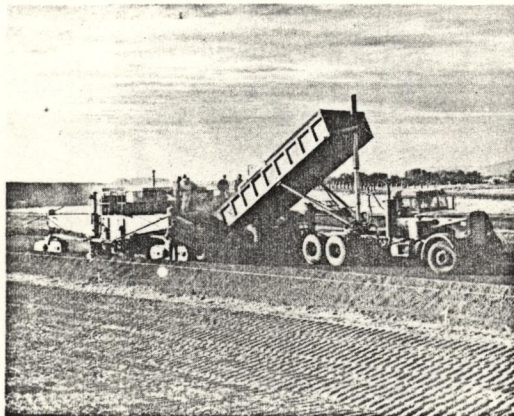


Enclosure, 15 Nov 68



The roar of diesels was a familiar sound to Vantage residents as the powerful earthmoving equipment rolled back the hills at the eastern end of the project near the Vantage Bridge over the Columbia River. District engineers from the Wenatchee Division supervised construction of this section between the river and Rygrass Summit.

Asphalt pavement was laid on parts of the Freeway with the use of a revolutionary new machine called the CMI. Huge quantities of pavement was able to be placed on the roadway in a short period of time, enabling contractors to speed the project to completion while giving motorists the smoothest possible driving surface.



The sweeping grandeur of the rolling rangeland is evident as motorists drive across the Columbia River to Vantage and the beginning of the new freeway. Farmers and ranchers will be able to speed their products to shipping points in Ellensburg and Yakima by as much as 20 minutes over the four-lane highway.

## PROGRAM

*(Interstate 82 Interchange)*

Opening Comments

Rep. Stewart Bledsoe

National Anthem

Presentation of Colors

Ellensburg Boy Scout Troop No. 20

Invocation

Rev. Donald M. Meekhof, Presbyterian Church

Principal Speaker

Charles G. Prah, Director of Highways

Ribbon-Cutting

Miss Susan Pottratz, Miss Ellensburg,  
assisted by state and local officials

## LUNCHEON

*(Elks Temple, 5th and Main)*

Master of Ceremonies John Ludtka, President Ellensburg Rotary

Invocation

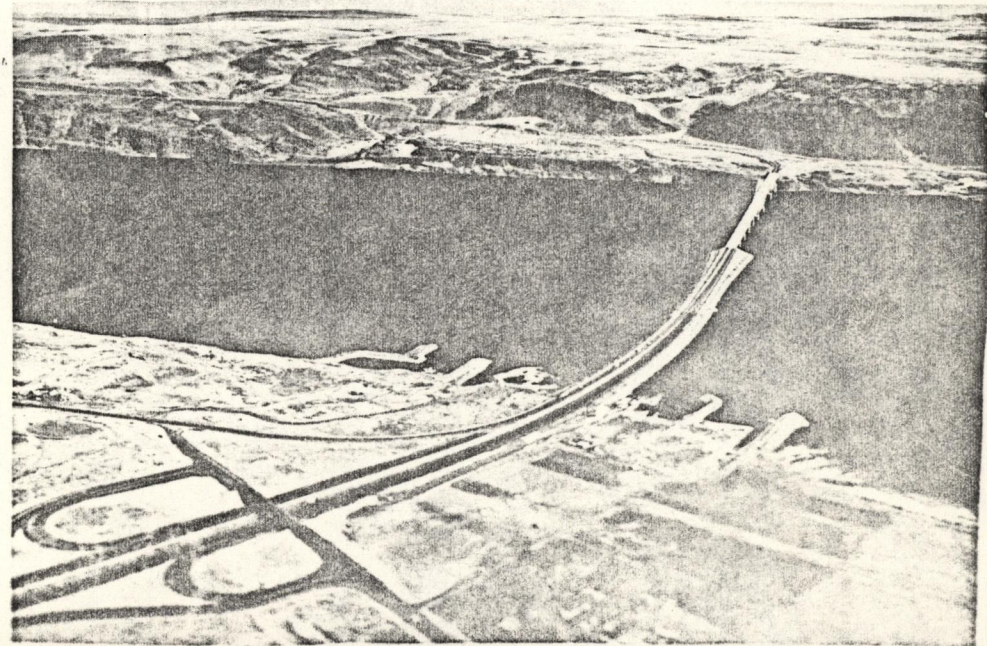
Rev. Donald M. Meekhof, Presbyterian Church

Opening Comments and Introductions

Sen. Nat Washington

Principal Speaker

George D. Zahn, Chairman,  
State Highway Commission







G. E. "Buzz" Mattoon  
District 5 Engineer  
Department of Highways



Sherman P. Bailey  
Mayor, Ellensburg



Hollis R. Goff  
District 2 Engineer  
Department of Highways



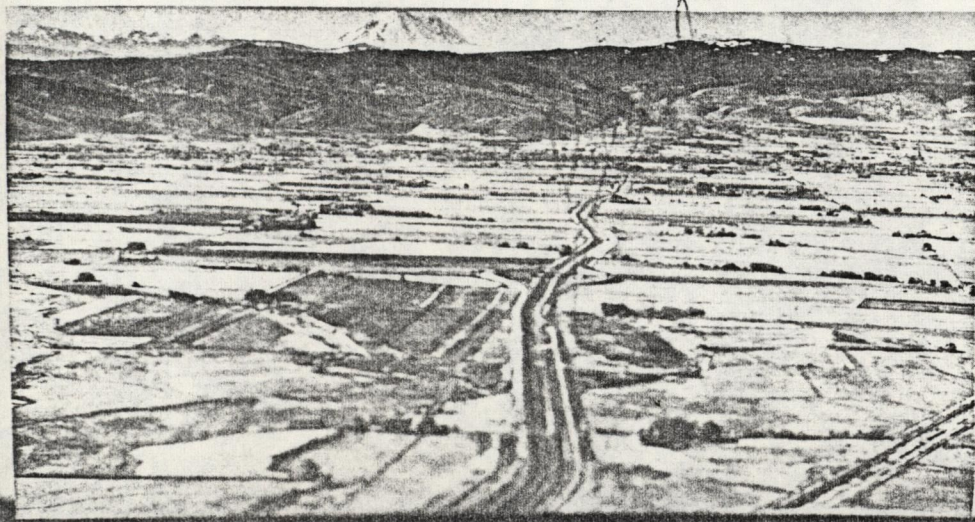
DANIEL J. EVANS  
*Governor, State of Washington*

## PRIMARY CONTRACTORS

|                          |              |
|--------------------------|--------------|
| Roy L. Houck Sons' Corp. | \$3,617,320  |
| Max J. Kuney Company     | \$2,419,061  |
| Peter Kiewit Sons' Co.   | \$2,588,305  |
| Washington Asphalt Co.   | \$1,483,889  |
| Stewart-Erickson         | \$4,537,626  |
| Vern Hoaglin Const. Co.  | \$ 174,437   |
| TOTAL                    | \$14,820,640 |

## DEPARTMENT OF HIGHWAYS PROJECT ENGINEERS

C. A. Burris, R. J. Patrick, Louis Bouchard  
Jim Parkhill, Melvin McMahan, Joe Aimone



Sen. Nat Washington



Rep. Stewart Bledsoe



Rep. Sid Flanagan



George D. Zetter, Chairman  
State Highway Commission



Charles G. Pugh  
Director of Highways

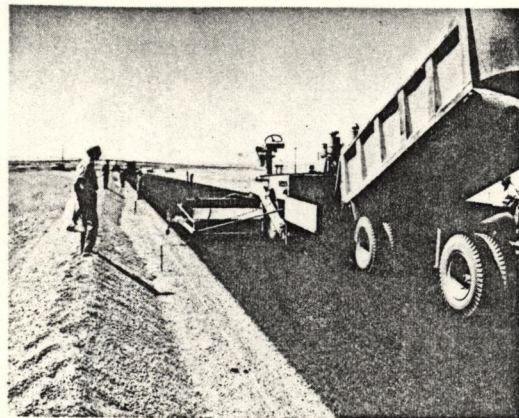


Susan Parkhill  
Ellensburg

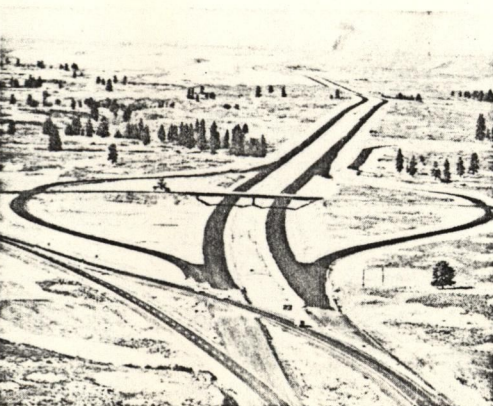




High-pitched activity was the order of the day last summer as contractors pushed for completion of the freeway. Conveyors carry gravel to various sections of the screening plant. The gravel is loaded into trucks for the ride to its final resting place—beneath the new Interstate.



Hot asphalt pavement is being laid on a section of the freeway near Sprague. Contractors took advantage of the hot weather to place and roll the asphalt to give motorists the smoothest and most durable driving surface.



The long fingers of asphalt stretch toward the horizon from the eastern end of the project. Traffic is routed from the existing freeway to the old two-lane highway near the Fishtrap Interchange to speed construction of the new section.

## PROGRAM

### *(Fishtrap Interchange)*

|                      |   |
|----------------------|---|
| Master of Ceremonies | George D. Zahn, Chairman,<br>State Highway Commission                             |
| National Anthem      |   |
| Invocation           | Rev. Wayne Olsen<br>St. John Lutheran Church, Sprague                             |
| Comments             | Sen. Elmer C. Huntley<br>Charles G. Prah<br>Director of Highways                  |
| Ribbon-Cutting       | Jeannine Gill, Miss Washington Highways,<br>assisted by state and local officials |







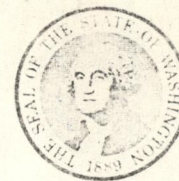
J. W. Mielke  
Mayor, Sprague



Jeannine Gill  
Miss Washington Highways



DANIEL J. EVANS  
Governor, State of Washington

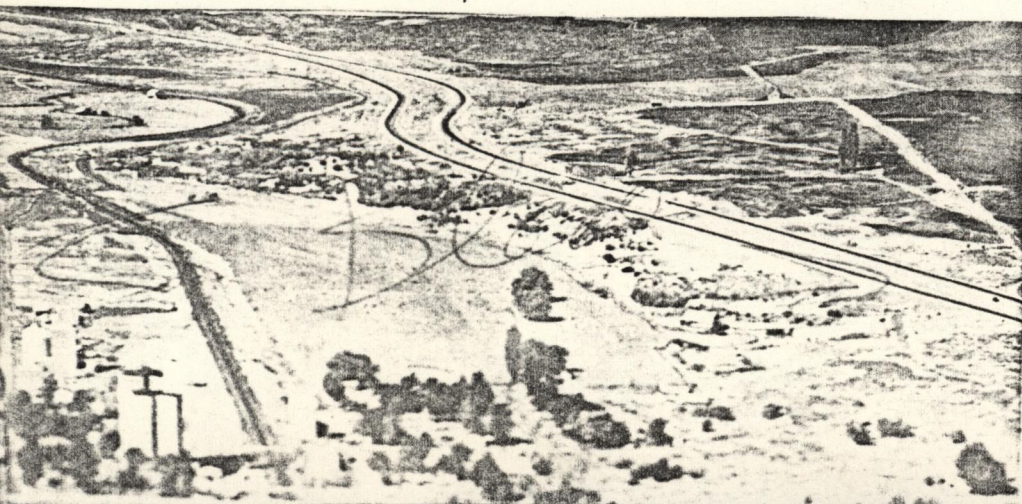


## PRIMARY CONTRACTORS

|                      |                   |
|----------------------|-------------------|
| N. A. Degerstrom     | \$1,300,205       |
| Inland Asphalt Co.   | \$1,100,080       |
|                      | <u>\$ 798,717</u> |
| Murphy Brothers Co.  | \$1,018,656       |
| Erickson Paving Co.  | \$2,341,605       |
| Materne Brothers Co. | \$1,107,504       |
| TOTAL                | \$7,666,767       |

## DEPARTMENT OF HIGHWAYS PROJECT ENGINEERS

W. M. Hansen, Donald P. Walker, Donald J. Cox



Sen. Elmer C. Huntley



Rep. Otto Amen



Rep. Robert F. Goldsworthy



George D. Zahn, Chairman  
State Highway Commission

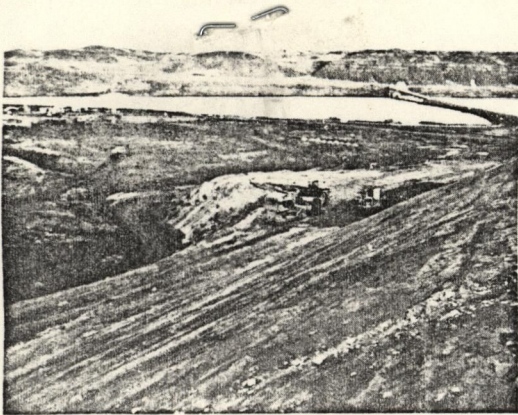


Charles G. Pahl  
Director of Highways



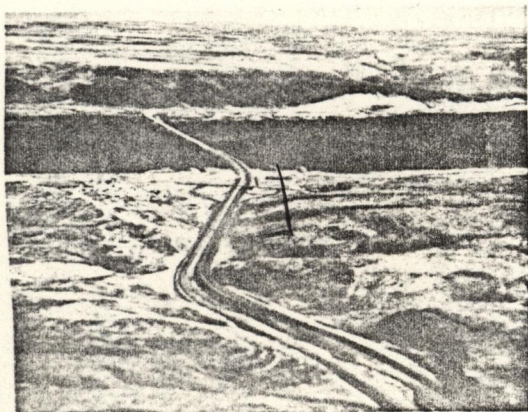
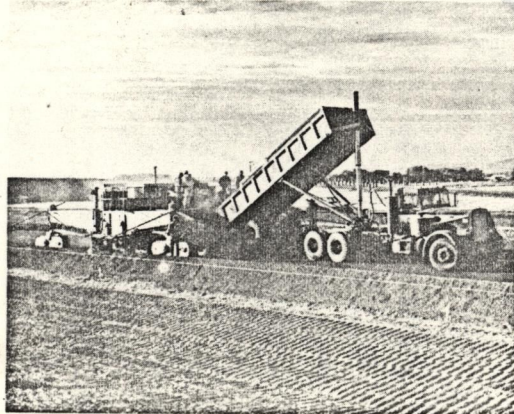
Walter R. Horning  
District Engineer  
Department of Highways





The roar of diesels was a familiar sound to Vantage residents as the powerful earthmoving equipment rolled back the hills at the eastern end of the project near the Vantage Bridge over the Columbia River. District engineers from the Wenatchee Division supervised construction of this section between the river and Rygrass Summit.

Asphalt pavement was laid on parts of the Freeway with the use of a revolutionary new machine called the CMI. Huge quantities of pavement was able to be placed on the roadway in a short period of time, enabling contractors to speed the project to completion while giving motorists the smoothest possible driving surface.



The sweeping grandeur of the rolling rangeland is evident as motorists drive across the Columbia River to Vantage and the beginning of the new freeway. Farmers and ranchers will be able to speed their products to shipping points in Ellensburg and Yakima by as much as 20 minutes over the four-lane highway.

## PROGRAM

(Interstate 82 Interchange)

11 AM.

Opening Comments

Rep. Stewart Bledsoe

National Anthem

Presentation of Colors

Ellensburg Boy Scout Troop No. 20

Invocation

Rev. Donald M. Meekhof, Presbyterian Church

Principal Speaker

Charles G. Pahl, Director of Highways

Ribbon-Cutting

Miss Susan Pottratz, Miss Ellensburg, assisted by state and local officials

## LUNCHEON

(Elks Temple, 5th and Main)

Master of Ceremonies John Ludtka, President Ellensburg Rotary

Invocation

Rev. Donald M. Meekhof, Presbyterian Church

Opening Comments and Introductions

Sen. Nat Washington

Principal Speaker

George D. Zahn, Chairman, State Highway Commission





F.L.O.P. →



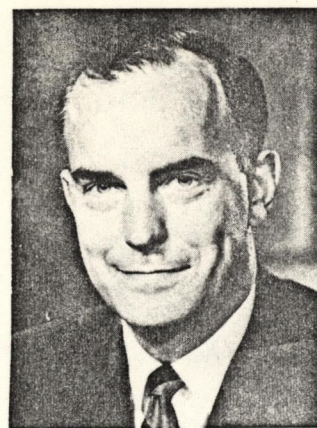
G. E. "Buzz" Mattoon  
District 5 Engineer  
Department of Highways



Sherman P. Bailey  
Mayor, Ellensburg



Hollis R. Goff  
District 2 Engineer  
Department of Highways



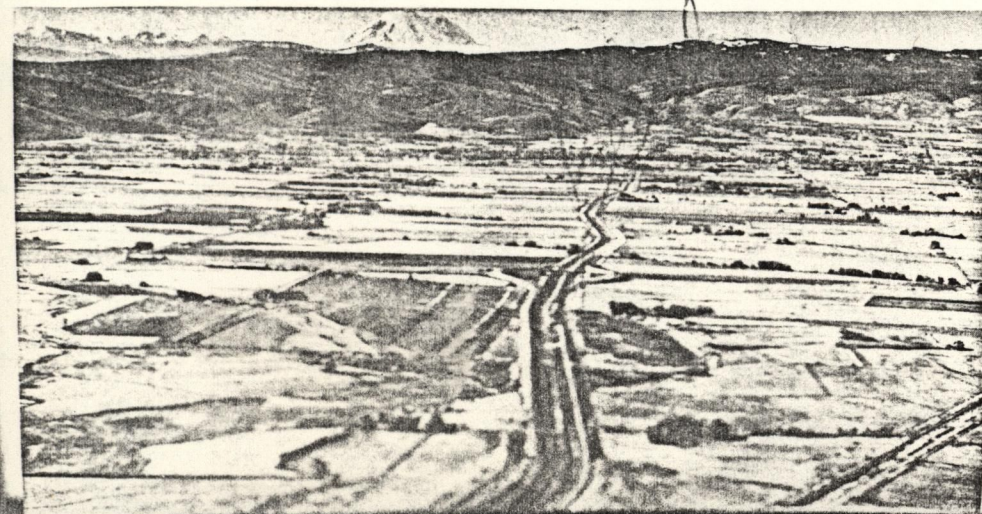
DANIEL J. EVANS  
Governor, State of Washington

## PRIMARY CONTRACTORS

|                          |              |
|--------------------------|--------------|
| Roy L. Houck Sons' Corp. | \$3,617,320  |
| Max J. Kuney Company     | \$2,419,061  |
| Peter Kiewit Sons' Co.   | \$2,588,305  |
| Washington Asphalt Co.   | \$1,483,889  |
| Stewart-Erickson         | \$4,537,626  |
| Vern Hoaglin Const. Co.  | \$ 174,437   |
| TOTAL                    | \$14,820,640 |

## DEPARTMENT OF HIGHWAYS PROJECT ENGINEERS

C. A. Burris, R. J. Patrick, Louis Bouchard  
Jim Parkhill, Melvin McMahan, Joe Aimone



Flop ↓



Sen. Nat Washington



Rep. Stewart Bledsoe



Rep. Sid Flanagan



George D. Zahr, Chairman  
State Highway Commission



Charles G. Pugh  
Director of Highways



Susan Pugh  
Miss Ellensburg



STATE OF WASHINGTON

ARTHUR B. LANGLIE, GOVERNOR



DISTRICT OFFICES

NO. 1 SEATTLE  
6TH AVE. SO. & SPOKANE ST.  
NO. 2 WENATCHEE  
NO. 3 OLYMPIA  
P. O. BOX 327

DISTRICT OFFICES

NO. 4 VANCOUVER  
4200 MAIN ST.  
NO. 5 YAKIMA  
P. O. BOX 52  
NO. 6 SPOKANE  
N. 2820 MAYFAIR ST.

DEPARTMENT OF HIGHWAYS

OFFICE OF DISTRICT ENGINEER

YAKIMA

P. O. BOX 52

January 5, 1943

Yakima Morning Herald  
Yakima, Washington

Attention of Elias Nelson

Gentlemen:

In accordance with your recent request and following our usual custom, we are attaching a statement of construction work in Kittitas and Yakima Counties for the year 1942. For reasons with which you are, of course, familiar, our construction program has been exceedingly light during the past year.

Very truly yours,

R. H. KENYON  
District Engineer

By

W. G. Cutler

District Office Engineer

RHK  
WGC:W  
enc



CONSTRUCTION PROJECTS - DISTRICT NO. 5  
(Kittitas and Yakima Counties only)

| Project No.   | Highway | Section                    | Nature of Work                        | Cost         |
|---------------|---------|----------------------------|---------------------------------------|--------------|
| C-554         | PSH 5   | Nelson Bridge Vicinity     | Construct guard rail                  | 330.00       |
| C-559R        | PSH 7   | Ellensburg-Highline Canal  | Produce mineral aggregate             | 11,250.00    |
| C-608R        | PSH 7   | Ellensburg-Highline Canal  | Construct non-skid seal               | 7,600.00     |
| C-609R        | PSH 7   | Alkali Ikes-Vantage        | Construct non-skid seal               | 6,850.00     |
| SC-331        | SSH 3-A | Toppenish-Alfalfa          | Construct non-skid seal               | 2,226.68     |
| SC-332        | SSH 3-A | Union Gap-Parker           | Construct non-skid seal               | 1,410.00     |
| SC-333        | SSH 7-B | Kittitas-Junction PSH 7    | Construct non-skid seal               | 950.00       |
| SC-347R       | SSH 3-A | Satus Vicinity             | Replace bridge over wastewater slough | 1,020.00     |
| Contract 2750 | PSH 5   | Morse Creek-American River | Construct bridges                     | 126,672.31   |
| Contract 2808 | SSH 3-A | Alfalfa to Satus           | Ballasting, surfacing, stockpiling    | 59,214.82    |
| TOTAL -       |         |                            |                                       | \$217,523.81 |