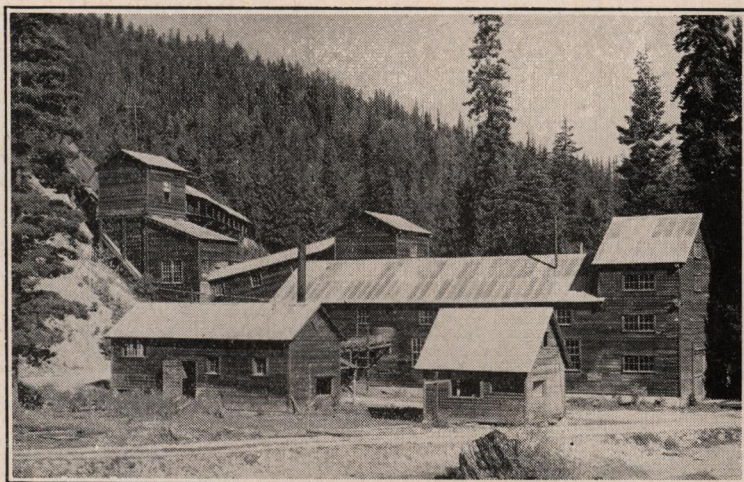
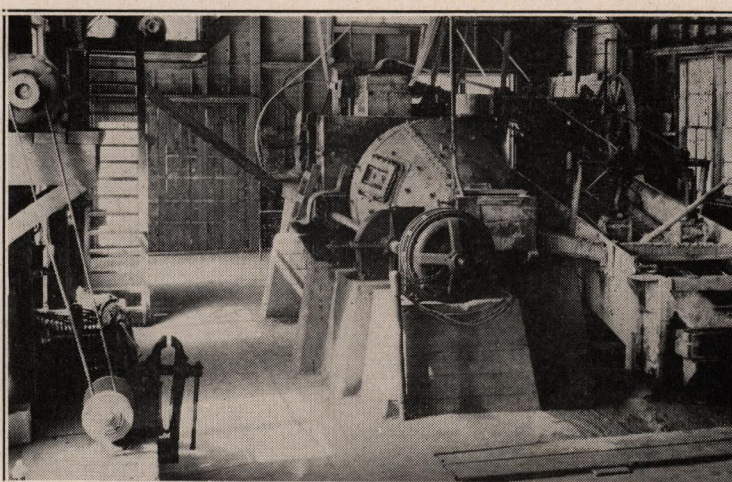


WHITEDELf



Concentrator (Mill) North Portal Whitedelf Mine



Hardinge Ball Mill and Classifier,
Interior Whitedelf ore concentrating plant

To the Whitedelf Stockholders:

HERE IS WHAT YOU SHARE IN

WHEN YOU OWN WHITEDELf STOCK (NON ASSESSABLE)

YOU OWN AN INTEREST IN

A comparably new Mine developed only down to the 400 level located in the same rock formation (Belt series of sedimentary rocks) in which the famous lead-silver mines are found in the Coeur d'Alenes mining district, lying to the south, where many of the orebodies go down as deep as five thousand feet.

(1) YOU OWN AN INTEREST IN,

The proven lead-silver ore and the ore yet to be developed in the deeper levels of the Pearl vein which extends diagonally across the Lloyd 80-acre tract and the Pugh 80, comprising the Northeast quarter (NE $\frac{1}{4}$), Section 34, Township 56, N. range 2 East Boise Meridian.

(2) YOU OWN AN INTEREST IN,

Three million, four hundred twenty-four thousand Board feet of standing saw-timber and one thousand three hundred sixty-two standing cedar telephone poles on 500 acres of mineral land adjoining the original Whitedelf mining property, land recently purchased from the Daugharty estate, and which comprises twelve and one-half 40-acre tracts in section 27, Township 56, N. range 2, East Boise Meridian. This land contains two prominent mineralized veins opened with shallow workings by leasers. (For picture of timber stand, see panoramic view.)

(3) YOU OWN AN INTEREST IN,

The mineral and standing timber (not cruised or estimated) on the Kimball 80-acre tract which is the North one-half (N $\frac{1}{2}$) of Northeast quarter (NE $\frac{1}{4}$) Section 21 Township 56 N. range 2 East Boise Meridian. This tract is located north of and on the opposite side of the hill from the Clarinda and Copper Giant mining properties and is in the direction of the strike of the ore-bearing veins that cross these two mining properties. These mines lie west of and on the same mountain that contains the Whitedelf veins. (Howe Mountain.)

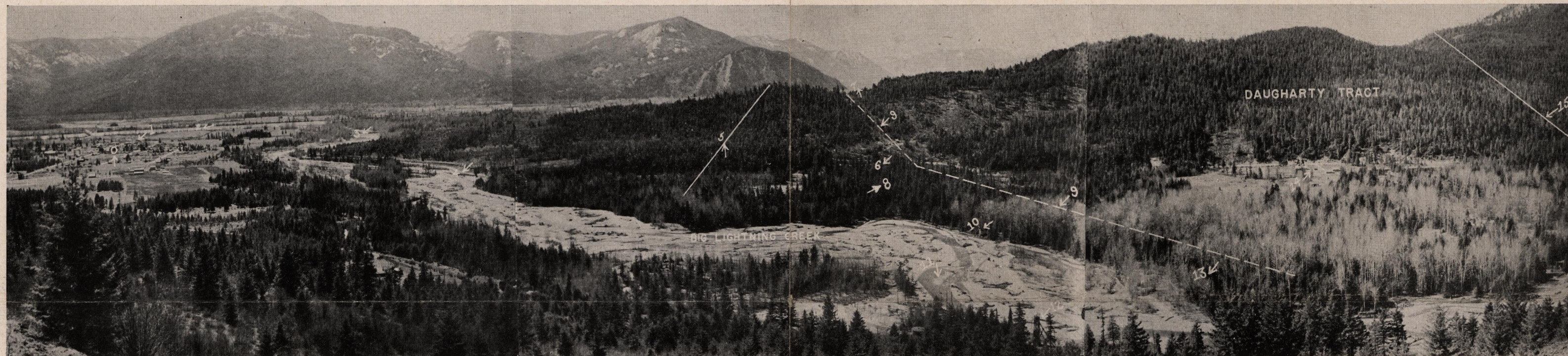


Miro Mihelich, U. S. Bureau of Mines Engineer, inspecting
Diamond drill Cores from Whitedelf Vein



Whitedelf Truck with Load,
Labor Saving Machinery

OVERLOOKING THE WHITEDELFF AND HOPE MINING PROPERTIES AND THE CLARKS FORK VALLEY



- | | |
|---|--|
| 0 Town of Clarks Fork | 4 Spring Creek road to WhiteDelf mine |
| 1 WhiteDelf ore loading dock Northern Pacific Railway | 5 East boundary WhiteDelf mining property |
| 2 Clarks Fork River | 6 WhiteDelf mill and surface working (screened by trees) |
| 3 Main line Northern Pacific Railway | 7 Lake Pend D'Oreille at lower end valley |

(4) YOU OWN AN INTEREST IN,

The ore in and the timber on the Mead tract of 140 acres, which is located on Antelope Mountain across town from the main WhiteDelf mining property. This mineral land is girdled by a blanket lead-silver vein with a series of small blanket lead-silver veins outcropping on the property, exposed by early day shallow diggings. This land, less 20 acres, comprises the (SE $\frac{1}{4}$) of Section 2, Township 55, North Range 2, East Boise Meridian, and is in the same section of land with the town of Clarks Fork.

(5) YOU OWN AN INTEREST IN,

A Warehouse site 110 feet by 35 feet, with the concrete foundation already constructed adjoining Northern Pacific R. R. right-of-way across from the N. P. depot at Clarks Fork. (See map on Page 4.)

(6) YOU OWN AN INTEREST IN,

The branch electric power line and transformer station connecting the high tension power line of the Mountain States Power Company with the WhiteDelf mill and mining machinery.

(7) YOU OWN AN INTEREST IN,

A 50-ton ore concentrating plant (floatation) complete, an air compressor plant, blacksmith shop, power drill sharpener, timber framing shed and various mine buildings, large and small mine hoists, a power mine loader (Eimco mucking machine) an electric mine locomotive (Mancha trammer), a series of electric mine pumps, mine cars, steel rails, air drills and drill steel, water, air and ventilating pipe, four thousand feet of submarine electric power cable installed, and in use to conduct electric power to operate underground mine machinery.

(8) YOU OWN AN INTEREST IN,

The ore bins and portal installation at the mine outlets on both sides of the mountain.

- | | |
|--|--|
| 8 Location diamond drill hole No. 3 | 12 Head frame at Hope mine shaft |
| 9 Line tracing surface course Pearl (WhiteDelf) vein | 13 Location diamond drill hole No. 1 |
| 10 Diamond drill set up at location hole No. 2 | 14 State fish hatchery |
| 11 Lightning Creek | 15 West boundary WhiteDelf mining property |

(9) YOU OWN AN INTEREST IN,

The cash operating fund on deposit in the Spokane & Eastern Bank in Spokane, Washington, amounting to \$41,186.10 on April 7, 1947.

FOR A DESCRIPTION OF THE MINE WORKINGS AND RECORD OF MINE PRODUCTION.

(See the WhiteDelf Company's mine prospectus.)

FOR AN AUTHENTIC REPORT ON THE NATURE AND VALUE OF THE UNDERLYING OREBODIES

As disclosed by the diamond drill explorations of the U. S. Bureau of Mines:

See the Lorain Report made by the U. S. Bureau of Mines; also see the Report made by the former Idaho State Geologist, Alfred L. Anderson, issued from Cornell University.

NOTE: All the WhiteDelf mine holdings are in patented land.

WHITEDELFF IS A NEW PROPERTY AS MINES GO, NOW, IN INITIAL STAGE OF DEVELOPMENT.

Lead is scarce and high priced. The WhiteDelf has the ore. The thing we must do now is to deepen the main shaft to get access to the proven ore in the lower levels and put the mine in larger and profitable production.

COMPTON I. WHITE

Addresses:

Home Office: Clarks Fork, Idaho.

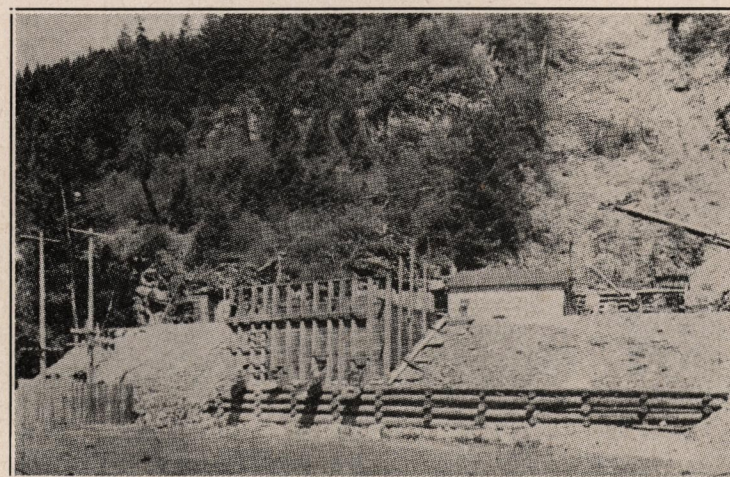
Fiscal Office: 416 Empire State Building, Spokane, Washington.

Eastern Office: 608 North Carolina Ave., S. E., Washington, D. C.

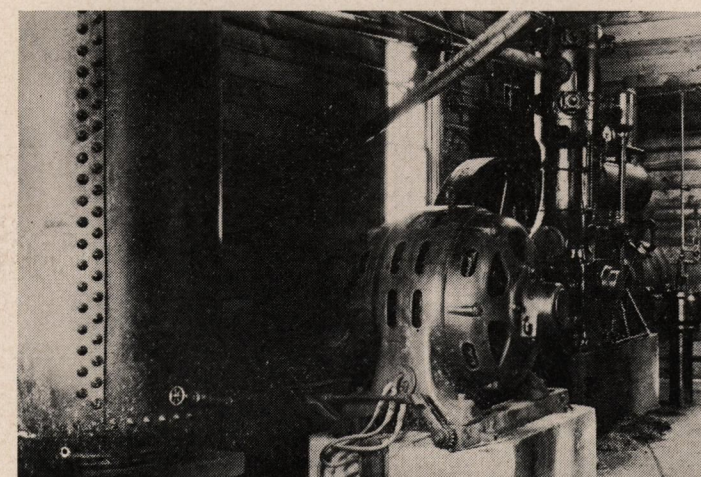
Stock Transfer Office: U. S. Corporation Co., 15 Exchange Place, Jersey City, N. J.



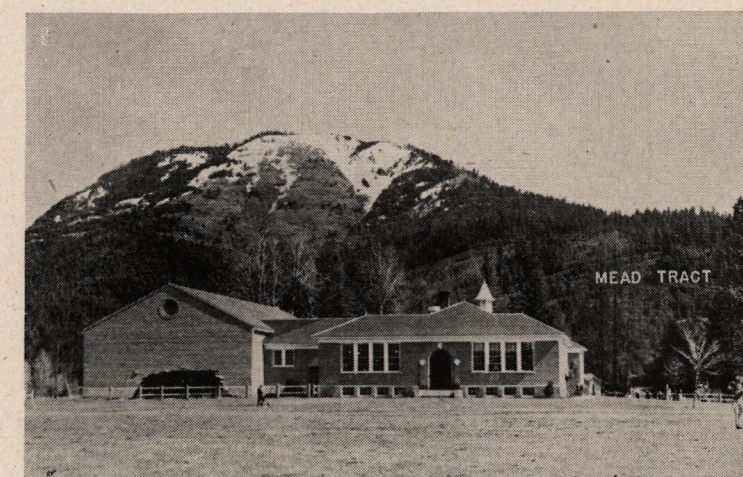
Main hoist in station at collar, WhiteDelf Shaft



Ore bins and compressor plant at South (opposite) Portal WhiteDelf Mine



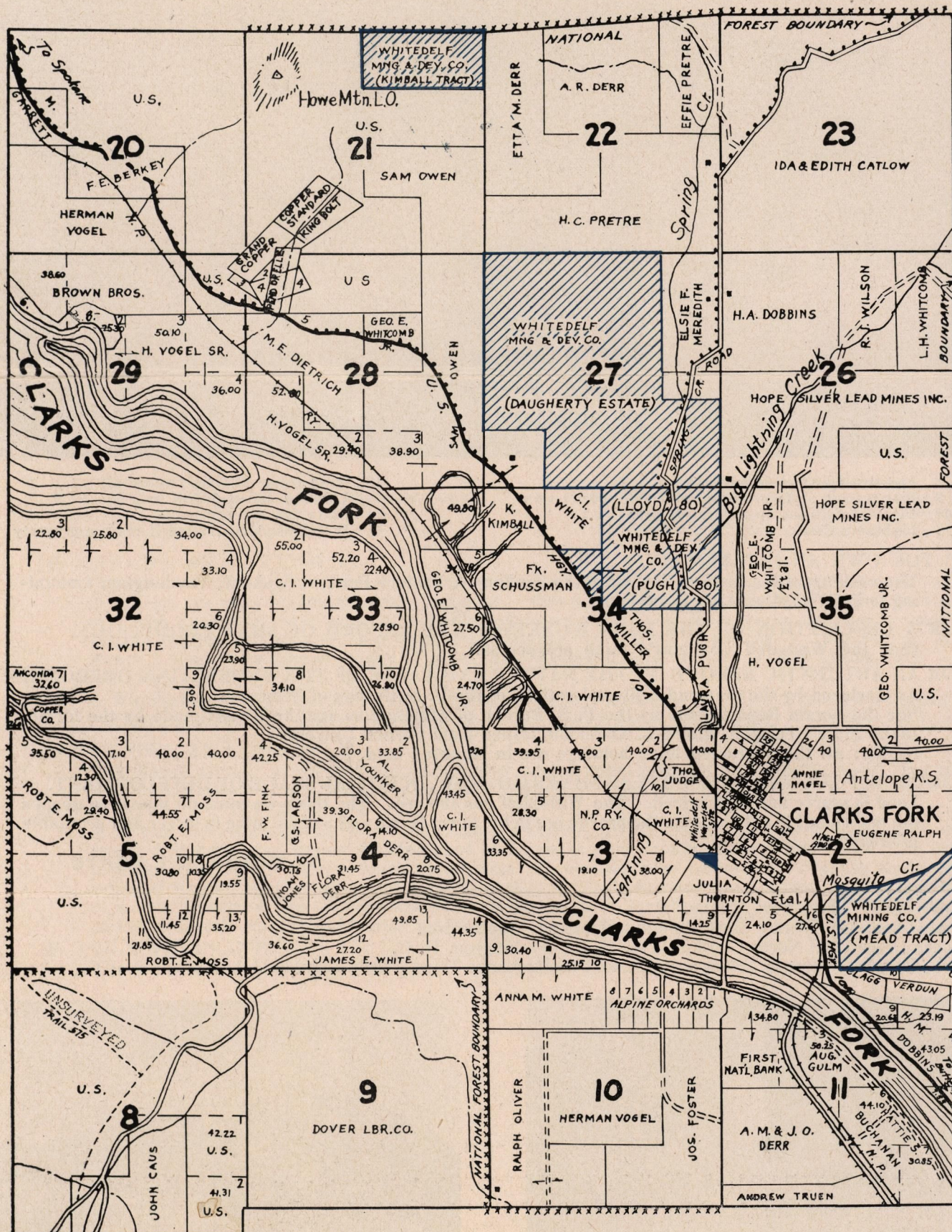
Main Compressor Plant WhiteDelf Mine



Mead Tract, WhiteDelf Mining Property, on Antelope Mountain (Clarks Fork School Foreground)

The Clarks Fork Mining District

IN IDAHO



Ownership Map Showing Sections and Subdivisions in Parts of Townships 55-56
North Range 2 East Boise Meridian