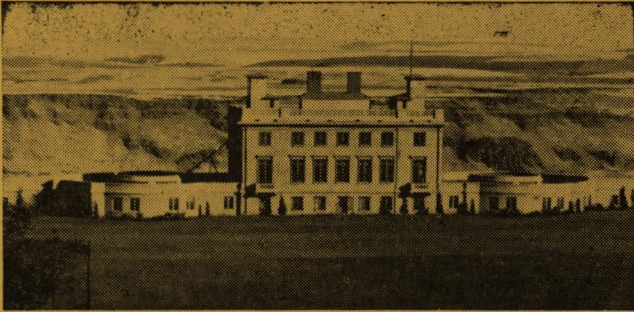


MARYHILL STONEHENGE



MARYHILL MUSEUM OF FINE ARTS

COMPLIMENTS OF

MARYHILL FERRY COMPANY

MARYHILL, WASHINGTON

MODERN, ALL-STEEL FERRY

8 CAR CAPACITY

24 HOUR SERVICE

MARYHILL MUSEUM OF FINE ARTS

This building, also known as Samuel Hill's International Museum, is situated about four miles west of Stonehenge, on Highway No. 830.

Mr. Hill started construction of the building in the year 1911, and intended it to be used as a fine residence. Work was interrupted by the world war. In the year 1926, Queen Marie of Rumania dedicated the, then incomplete building, as an International Museum. Mr. Hill, at his death, endowed the museum as a permanent exhibition place for a large collection of fine art treasures that were contributed by many countries throughout the world. The building was then completed at a reported cost of over one-half million dollars, and was opened to the public early in 1940.

With the opening of the museum, many of the exhibits are on display to the general public for the first time. Among exhibits are direct gifts of personal possessions of the late King Albert of Belgium, members of the old French Royalty, including personal relics of Napoleon I, of Queen Victoria of Great Britain, and members of her family.

In addition to priceless heirlooms and relics of several royal families of Europe, and many examples of the works of some of the Old World's most famous artists and sculptors, there is a comprehensive display of museum pieces of the Western World, with many Indian relics and curios. Particular aims of the museum staff, include the development of collections of artifacts and the history of early Columbia River and Northwestern Indians who occupied this territory prior to the advent of the first white settlers.

The late pope, Pius XI, sent gifts from the famous Vatican collection. Also on display, are gifts from the Kings and Queens of; Greece, Serbia, Belgium and Rumania, as well as from the French Government, who sent selected gifts from the National Museums of France.

One of the most interesting exhibits to some visitors, is a room of valuable and rare books and manuscripts, of an estimated value of over \$90,000.00. Some of the very best examples of the bookbinders craft are shown.

Among the many interesting exhibits, is a collection of relics from the Pilgrim Father's ship, The Mayflower.

The scope of the exhibits is so extensive, that everyone is assured of an educational and interesting visit.

MARYHILL STONEHENGE

High upon a bluff, overlooking the Columbia River at Maryhill, Washington, stands an unique memorial which, on May 30, 1929, was dedicated under auspices of The American Legion, to the memory of the Klickitat County, Washington, boys who gave their lives in the service of their Country during the World War.

This memorial is an exact replica, as to shape, size, design and position with reference to the stars, of the Stonehenge on Salisbury Plain, Wiltshire, England.

The origin of Stonehenge is shrouded in mystery, but is generally believed to have been erected about four thousand years ago, by the Druids, as a place of Sun Worship, and as a place of sacrifice to their Gods of War. It is pretty definitely known that the temple was used by the Druids for these purposes, but some authorities contend that the structure was built in the latter part of the Stone Age, and was several thousand years old at the time it was being used by the Druids.

Structurally, the Stonehenge consists of large stones, set in two circles and two ovals, with a large altar stone within the central enclosure. The outer circle, one hundred eight feet in diameter, is made up of thirty upright stones, each sixteen feet in height and eighteen feet in circumference, with thirty similar stones placed horizontally on their tops. The inner circle consists of forty single, upright stones, each nine feet in height. The ovals are formed of five pairs of trilithons, standing separate from each other, and rising gradually in height from east to west. Standing to the east of the main structure and outside of the outer circle is a stone that is variously known as The Friar's Heel, the Hele Stone or the Sun Stone. This stone casts it's shadow on the altar stone on the day of summer solstice, usually June 21, each year, and only on this one day.

The late Mr. Samuel Hill, well-known pioneer and advocate of good roads, was the donor of this memorial. While in Europe during the World War, he was struck with the thought that after thousands of years, humanity was still making human sacrifices to the gods of war, just as the ancient Druids made sacrifices to their war gods on the altar of their temple. After his return, he planned, and caused to be erected, this memorial, which will stand through the ages as a fitting tribute to the memory of Klickitat County's heroic dead.

The Stonehenge Memorial is open to the public, and is easily reached from Highway No. 97.



MARYHILL FERRY

MARYHILL, WASHINGTON

PEASLEY - PHOTOS

CONNECTING LINK ON THE FAST U. S. HIGHWAY NO. 97 TO CALIFORNIA