



MONTANA HISTORICAL SOCIETY

Montana's Oldest Institution—Founded 1865

MUSEUMS GALLERIES LIBRARY

Americana, Art, Bronzes and Book Sales

VETERANS & PIONEERS MEMORIAL BUILDING

225 No. Roberts St.

Across from the Capitol

Helena, Montana 59601

SUMMER HOURS: Memorial Day through Labor Day:

8:00 A.M. to 8:00 P.M.

Seven days a week, holidays included

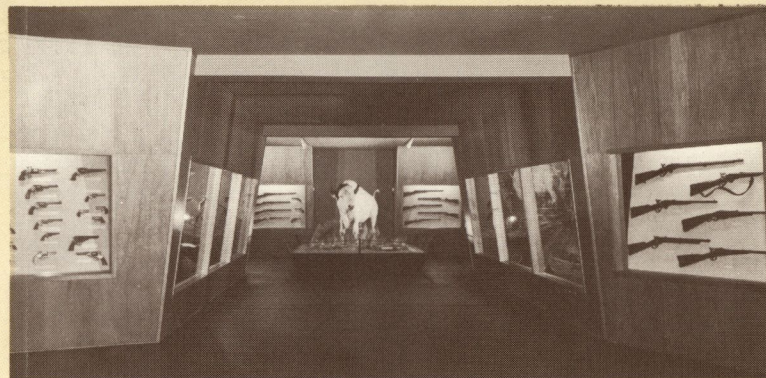
WINTER HOURS:

8:00 A.M. to 5:00 P.M., weekdays

12:00 Noon to 5:00 P.M. weekends and holidays

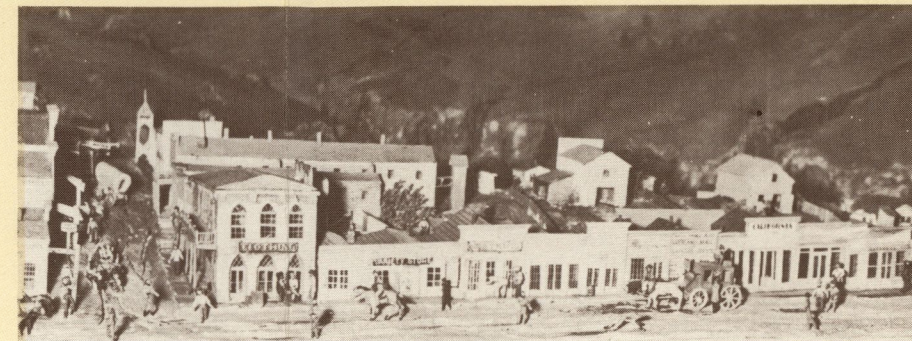
A new dimension in enjoyment of the museums and galleries: informative taped narrative commentaries. Inquire of the attendant in the lobby, main floor, for earphone rental. No other fees charged. Inquire also about the Ed Towe Antique Ford Collection, now on display at 1325 Helena Ave., about 10 blocks north of the Society's building. The attendant will direct you and tell you about hours.

formal & informal MUSEUMS



"BIG MEDICINE" and a small part of the Johns Gun Collection. Informal Museum, ground floor.

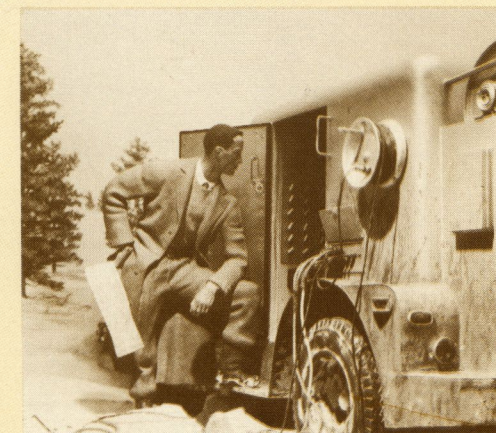
Some of the richest gold strikes in history helped create Montana Territory. The great diorama of Virginia City delineates the hustle and bustle of a fabulous territorial camp. Mining Room, Formal Museum, Main Floor.



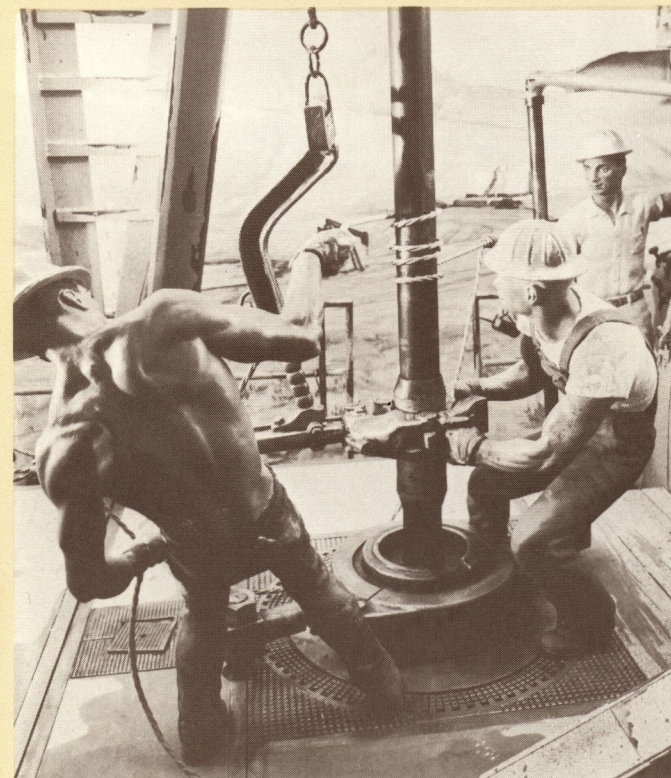
SOD HUT ERA OF HOMESTEADING, Formal Museum.



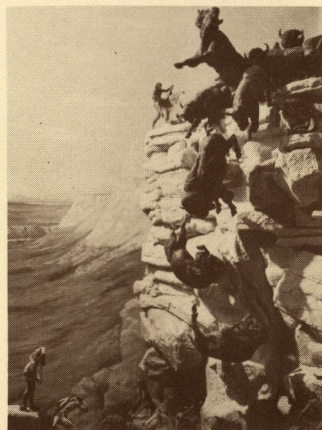
OIL SEISMOGRAPH diorama, Industrial Frontier.



OIL DRILLING diorama in the Industrial Frontier, Formal Museum.



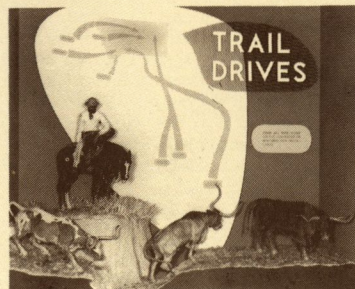
Buffalo Jump
Diorama,
Formal Museum,
Main Floor.



Pioneer
Loggers
Diorama



A Diorama in the
Cattlemen's Frontier Room,
Formal Museum.



THE LEWIS AND CLARK DIORAMA

A PICTURE, it is said, is worth a thousand words in story-telling ability. The Formal Museum, main floor, was planned and is maintained with graphic story-telling foremost in mind. And it has a vivid story to tell: the colorful, dramatic and incredibly varied history of Montana, capsulized into the most exciting peaks of our past. Unlike too many collections, there is no clutter or imbalance here. Since the erection of the Veterans and Pioneers and Memorial Building in 1952, skilled museum planners and researchers utilized the most advanced museum techniques to tell Montana's history in visual sequence. Breaking the story down into "frontiers," the museum begins with the Natural Setting, then progresses through the Indian Fur Trade, Mining Frontier, Cattle Era, Homestead Frontier, and finally the Industrial Frontier. Dominating the exhibits is the great diorama depicting a critical episode in the Lewis and Clark Expedition. Recently completed transportation exhibits tie the entire Formal Museum together down a central corridor, depicting modes of transportation from Indian travois to freight wagons and "prairie schooners."

ATTUNED TO THE INFORMALITY so typical of Montana and her people is the Informal Museum on the lower floor level. Acquisition of the Johns Gun Collection several years ago inspired the full-vision design which now dominates the area. Display cases feature changing exhibits also of an infinite variety of Indian artifacts, hand-crafted tools, household items, clothing, dolls, and many others. Although building expansion will greatly enhance the scope of all these displays, the basic idea of the Informal Museum will remain the same: to display, without clutter or monotony, the actual objects of our history. Special favorites in the area include the beautifully engraved ship's silver service given by the people of Montana to U.S. Navy vessels bearing the names USS MONTANA and USS HELENA, the mounted remains of the great white buffalo BIG MEDICINE, and the menacing figure of a giant KODIAK BEAR. In another portion of the ground floor display area may be seen the fine KERR IVORY COLLECTION and the permanent exhibits of the MONTANA INSTITUTE OF THE ARTS.

Galleries

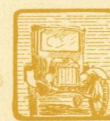
IN ADDITION to the two permanent C. M. Russell Rooms, the Society maintains the Gary Cooper Art Gallery on the main floor in which the works of contemporary artists, sculptors and craftsmen are shown, usually for month-long periods. Occasionally, classic western art from the Society's growing permanent collection is hung in this gallery, named for the Montana-born actor who never lost his interest in his native state, its artistic and historical heritage.



A WORLD-FAMOUS COLLECTION OF Charles M. Russell oils, water colors, sketches, sculpture and memorabilia housed in two galleries, both situated on the main floor. The formal gallery, pictured here, contains some of his finest work, the nucleus being the Malcolm S. Mackay and C. R. Smith Collections. The informal, or orientation room, to the left of the Gary Cooper Gallery, is dedicated more to the personality of this uncommon cowboy artist who is Montana's most honored citizen.



THE ED TOWE ANTIQUE
Ford
COLLECTION



ARRIVING IN HELENA the Summer of 1967 was the superb aggregation of vintage Ford automobiles, believed to be the largest in the world in terms of cars of one make in restored and displayable condition. Housed for two years at a building some ten blocks north of the Society building, the more than 30 Fords dating from 1903 through 1932, add another dimension to the Historical Society exhibits. When additional space planned for the Society's building becomes a reality, it is the plan that this collection will be integrated with our museum exhibits. Meanwhile, you are invited to inquire of the lobby attendant how to get to 1325 Helena Ave., where these antique beauties may now be viewed.



HISTORICAL LIBRARY



MONTANA HISTORICAL LIBRARY, on the second floor, off the mezzanine facing the Director's office, is considered not only one of the most complete research centers devoted to the history of any Western state, but of prime significance to all the Northern Great Plains, Rocky Mountain, and Pacific Northwest regions. This collection of early-day newspapers, manuscripts, pictures and journals, has grown tremendously since 1864 when Montana Territory's first legislators had the foresight to establish the Montana Historical Society. An example of the collection of archival treasures, kept on five vault stack levels (and in some cases in extra security fire, earthquake and humidity-controlled lock-up) is THE MONTANA POST, pictured above, dated Saturday, April 29, 1865. With bold rules between the columns, this pioneer press announced the assassination of President Lincoln and the feared murder of Secretary Seward. These splendid research facilities are used by hundreds of scholars, historians and writers every year. But they are equally available to anyone sufficiently interested in history to delve into their richness.

SOCIETY PUBLICATIONS

MONTANA the Magazine of Western History, published quarterly by the Montana Historical Society, is the most widely read journal published by any state historical group. Lavishly illustrated, it contains articles on all the western states. Subscriptions, at \$5.00 per year, \$8.00 for two years and \$11.00 for three years, are available while you are in the building. With your subscription will come THE MONTANA POST, official newsletter of the Society, published eight times a year.