

## DELLA ROBBIA MIRACLE CLAY — Ceramics Without A Kiln!

From the days of the ancient Chinese potters, kiln firing of pottery and sculpture has been difficult, risky and expensive. Sculpture House has modernized this antiquated method with a new type clay which bakes hard in your kitchen oven. The complex kiln is no longer necessary. DELLA ROBBIA CLAY reduces the necessary heat for converting clay into strong durable pottery from 2000 deg. to 250 deg., reduces the time from hours to minutes, the cost from dollars to pennies. Discover as have thousands of sculptors, potters, teachers and housewives that making beautiful things with DELLA ROBBIA MIRACLE CLAY is easy, foolproof and inexpensive.

### Directions

1. **Moisten** DELLA ROBBIA to keep it pliable and easy to handle. Cover work left over night with wet cloth or plastic wrap to prevent drying.

2. Use **Coil Method** to build most round pieces; the **Slab Method** for square or flat pieces.

**Other Methods** of working: throwing, slip-casting, and handshaping may be used with DELLA ROBBIA MIRACLE CLAY. Sculptured pieces may be solid or hollow. Join handles and other pieces together as follows: scratch points of contact, and stick together with slip. (Slip is made by mixing clay with water to consistency of thick cream).

3. **Armatures** or supports such as toothpicks, plain wire, etc., must be removed from DELLA ROBBIA CLAY (or any ceramic clay) before allowing to dry. Otherwise cracks will result. Free-standing sculpture — animals with fragile legs and figures in action positions — cannot be made in any kind of pottery clay. Use SCULPTOR'S MACHE. Send for information.

4. For **Rush Work**, speed drying in the sun, over a radiator, or place piece on an open oven door with temperature held to 150 deg. However, for best results, dry slowly at room temperature.

5. **Before Baking, Dry Thoroughly** each piece made with DELLA ROBBIA MIRACLE CLAY. Thin pieces will dry in a few days. Larger holloware may require a week's drying time. Solid pieces — heads, figures, and animals — may require 2 weeks.

6. **Now You Are Ready To Bake!** Place piece in cold oven. Set oven for 150 deg. until piece is warmed through. Then raise oven temperature to 250 deg. for 30 minutes to one hour. Keep oven door open approximately 2 inches during baking.

**Now You Are Ready To Decorate With Della Robbia Miracle Glaze!**

### Required Reading for Beginners.

"How To Do Ceramics" No. 1 by Lion

"How To Do Ceramics" No. 2 by Lion

"Sculpture For Beginners" by Lion

Each \$1.00 Postpaid

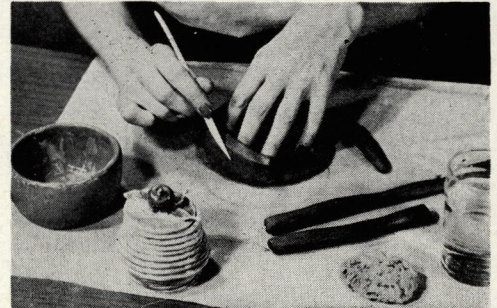
**Send 10¢ for General Catalog of Sculpture materials.**

*Please be sure to include enough postage and insurance. We will refund any overage immediately.*



### DELLA ROBBIA MIRACLE CLAY

4 lb. Trial Size Package	\$1.50
12½ lb. Bulk	\$3.95
Bulk Package:	
25 lb.	\$6.95
50 lb.	\$9.85
100 lb.	\$18.50



Coil and Slab Method. Use water and sponge freely to keep clay workable. Work on reverse side of oil cloth or plaster of paris slab.



Handshaping. Construct figures and animals by joining individual parts with slip.



Figures may also be constructed on makeshift armatures if removed before drying. To smooth use a damp sponge.



Della Robbia Miracle Clay and Glaze baked to durable hardness in your own kitchen oven! Accurate Oven Thermometer insures success of your work. Order No. T 9 \$1.75



## DELLA ROBBIA GLAZE

Decorate — beautify your home accessories. Make gifts with a professional ceramic finish. Give new life to worn canisters, vases, bottles — tired out things you have discarded. Start a useful and profitable hobby: decorate with DELLA ROBBIA, the MIRACLE GLAZE that paints on any kind of surface and gives it luster and beauty. Can be used opaque or made translucent. Tough — durable — washable. Teachers — Artists — Craftsmen — Manufacturers use DELLA ROBBIA.

**Paint metal** — costume jewelry, canisters, trays, lamps.

**Paint china** — dinnerware, tiles, figurines, vases.

**Paint glass** — tea sets, glasses, mirrors, bottles, vases.

**Paint clay** — dried objects of every description.

**Paint plaster** — wood — pottery — plastics — cloth.

**Directions:** for glazing Della Robbia Miracle Clay, other ceramic clays, plaster, wood, and other porous materials.

1. **Apply 2 coats of DELLA ROBBIA UNDERCOAT** to all porous surfaces. Allow to dry.

2. **Now Decorate** with DELLA ROBBIA GLAZE. Allow glaze to flow generously from brush. Work rapidly when covering an entire piece with a solid color to insure even finish. Always apply at least 3 coats. Additional coats will produce a more ceramic-like finish. Della Robbia Glaze also may be sprayed or dipped.

### Drying

3. Allow each coat to dry until tack-free before applying next coat. THIS IS MOST IMPORTANT!

4. **Translucent Finish:** mix 4 or more parts of TRANSPARENT CLEAR to one part of color glaze, and apply. A final coat of TRANSPARENT CLEAR over entire piece seals the colors and produces a more lustrous finish.

5. **Is Baking Necessary?** On clay, plaster and wood, DELLA ROBBIA GLAZE does not require baking. Simply mix Della Robbia Hardener — a few drops — with each glaze as you apply it.

### Glassware, China and Metal

1. **Clean** the surface with Della Robbia Reducer. Then apply DELLA ROBBIA GLAZE.

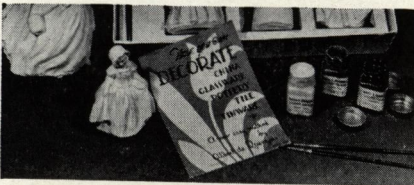
2. Where extreme adhesiveness of the decoration is desired, apply one coat of SPECIAL ADHESIVE UNDERCOAT, and bake. Then apply glaze colors.

3. Follow all directions above for use of glaze. Remember to allow adequate drying time between coats.

4. To produce a **Glass-smooth surface**, immediately after application of each coat, cover work, or place in an enclosure (box, drawer, closed shelf) to shield from dust and slow up drying.

5. After decorating, it is recommended that you **Bake** glass or china for 30 minutes or longer at 250 F. This will produce a more permanent finish.

6. For **Iridescent Luster**, apply DELLA ROBBIA DRESDEN LUSTER after glaze has set as per instructions on bottle.



For more complete instructions, send for illustrated booklet "Now You Can Decorate." Only 25¢ postpaid.

The correct brushes for easy decorating "B" brush outfit total price \$1.10 postpaid.



### TILES

Tiles for decorating, bisque and glazed

Glazed 4 1/4" x 4 1/4" sq. ea.	\$0.22
Glazed 6" x 6" sq. ....ea.	.35
Glazed 6" round ....ea.	.40
Glazed 6" x 4 1/4" oval ea.	.33
Bisque 4 1/4" x 4 1/4" sq. ea.	.17
Bisque 6" x 6" sq. ....ea.	.30
Bisque 6" round ....ea.	.31
Bisque 6" x 4 1/4" oval ea.	.25
Tile Frames 6" x 6" ....ea.	.60
Tile Frames 6" x 12" ....ea.	.90
Tile Frames 6" x 18" ....ea.	1.20
Tile hangers, per dozen.....	.18

### Della Robbia Glaze Hardener

Add to Della Robbia Liquid Glaze to harden glaze without baking.

2 1/2 oz. ....	\$ .45
1/2 oz. ....	1.50
Pint ....	2.95

### Della Robbia Dresden Lustre

Gives an iridescent luster to Della Robbia glazed surfaces.

1/2 oz. ....	\$ .55
1 oz. ....	1.00

### Della Robbia Glaze Reducer

For thinning glaze and cleaning.

2 1/2 oz. ....	\$ .35
Pint ....	.95
Quart ....	1.65
Gallon ....	3.95

### Della Robbia Liquid Glaze

3/4 oz. ....	\$ .45
2 1/2 oz. ....	.85
Pint ....	2.50
Quart ....	4.75
Gallon ....	10.85

See list of available colors below\*

### \*Glaze available in these sparkling colors

Cardinal Red	Golden Yellow	Sunglow Orange
Deep Red	Eggshell White	Azure Blue
Old Rose	Glacier White	Ultramarine
Flesh	Gold	Delft Blue
Sun-tan Flesh	Silver Grey	Midnight Blue
Ivory Green	Silver	Congo Black
Emerald Green	Cinnamon Brown	Twilight Purple
Antique Buff	Statuary Brown	Transparent Clear
Topaz Yellow	Persian Orange	



### Della Robbia Undercoat

Necessary for sealing pores of clay and plaster objects before applying glaze.

2 1/2 oz. ....	\$ .35
Pint ....	1.25
Quart ....	1.95

### Della Robbia Special Adhesive Undercoat

This undercoat is to be used on glassware, china or similar materials where extreme adhesiveness of the decoration is desired.

1 oz. ....	\$ .50
2 1/2 oz. ....	1.25

### Della Robbia China Paste

For filling cracks and building missing parts. Allow to dry overnight, then sand smooth, apply second coat, if necessary, and color with Della Robbia Glaze.

2 1/2 oz. ....	\$1.25
----------------	--------

### Della Robbia China Repair Cement

Cold setting.

2 1/2 oz. ....	\$1.25
----------------	--------

