



"QUAW-THLA-NUM-  
YAW-NOW-WEE"



**Welcome to**

**TOPPENISH**

THE CAPITAL OF THE

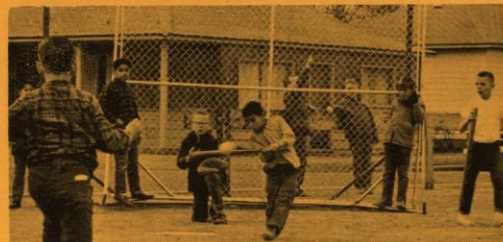
**YAKIMA INDIAN NATION**

**THE BULL'S EYE OF  
LIVING IN THE POW WOW CITY  
WASHINGTON**

# TOPPENISH IS THE CAPITAL OF THE YAKIMA INDIAN NATION

COVERING AN AREA OF OVER ONE MILLION  
ACRES. MAJOR INDUSTRY IS LOGGING IN WHICH  
OVER EIGHT MILLION BOARD FEET OF LUMBER IS  
IS CUT YEARLY

THE YAKIMAS ATTRACT THOUSANDS OF VISITORS  
EACH YEAR AS THEY CELEBRATE-----  
WASHINGTON'S BIRTHDAY---ANNUAL EN-  
CAMPMENT AT WHITE SWAN---ALL IN-  
DIAN RODEO---AND, IN JUNE--TREATY  
DAYS. HELD IN COMMEMORATION  
OF THE TREATY SIGNED BY  
CHIEF KAMIAKIN AND GOV.  
STEVENS IN 1855.



YEAR AROUND COMMUNITY SUPPORTED  
YOUTH ACTIVITIES PROVIDES CONSTANT  
RECREATION FOR TOPPENISH  
YOUNGSTERS...

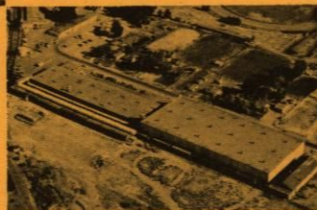
TOPPENISH HAS  
FIVE ELEMENT-  
ARY SCHOOLS,  
A JR. HIGH AND  
A SR. HIGH..  
ALSO A FINE  
PAROCHIAL  
SCHOOL...



AGRICULTURE ECONOMY  
CONSISTS OF SUGAR  
BEETS - HOPS - CORN -  
ORCHARDS - ASPARAGUS-  
POTATOES - TRUCK  
GARDENS



TOPPENISH BOASTS OF  
MANY MILLION DOLLAR  
INDUSTRIES -- U AND I  
SUGAR - CALIFORNIA  
PACKING CO. - WESTERN  
MEAT PACKING CO. -  
AND THE MOST MODERN  
LIVESTOCK SALES YARD  
IN THE NORTHWEST...

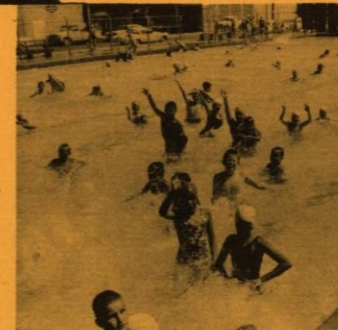


THE BIGGEST CATTLE  
FEEDING OPERATION IN  
THE NORTHWEST, ALSO  
THE BIGGEST CHOICE-  
KILL PLANT WEST OF  
THE MISSISSIPPI....

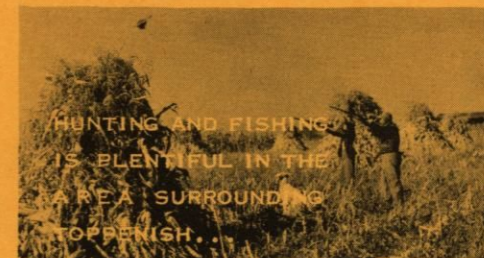


PLAY GOLF THE  
YEAR-ROUND AT  
THE MT. ADAMS  
GOLF & COUNTRY  
CLUB...

THE NEW MUNI-  
CIPAL SWIMMING  
POOL IS A MUST  
FOR SUNNY TOP-  
PENISH SUMMERS.

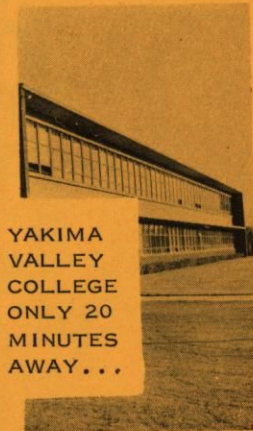


TOPPENISH REGULARLY  
FIELDS A POLO TEAM -  
PLAYING AT NEAR-BY  
KELLY FIELD...



EASY LIVING IN TOPPENISH - GAZING  
AT GLORIOUS MT. ADAMS AND A  
BEAUTIFUL VIEW OF FAMOUS MT.  
RAINIER. TOPPENISH HAS THE RARE  
DISTINCTION OF THE MILDEST WINTERS  
AND THE MOST SUN-FILLED SUMMERS  
IN THE VALLEY. SITUATED IN THE  
CENTER OF A TRADING AREA OF OVER  
250,000 POPULATION - TOPPENISH  
GIVES YOU THE COUNTRY STYLE  
LIVING IN THE HEART OF A  
METROPOLITAN AREA.....

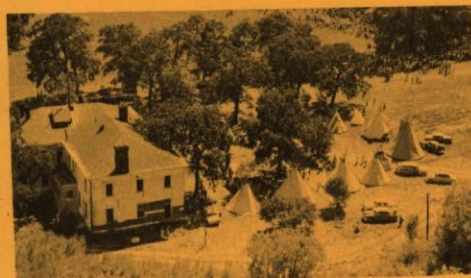
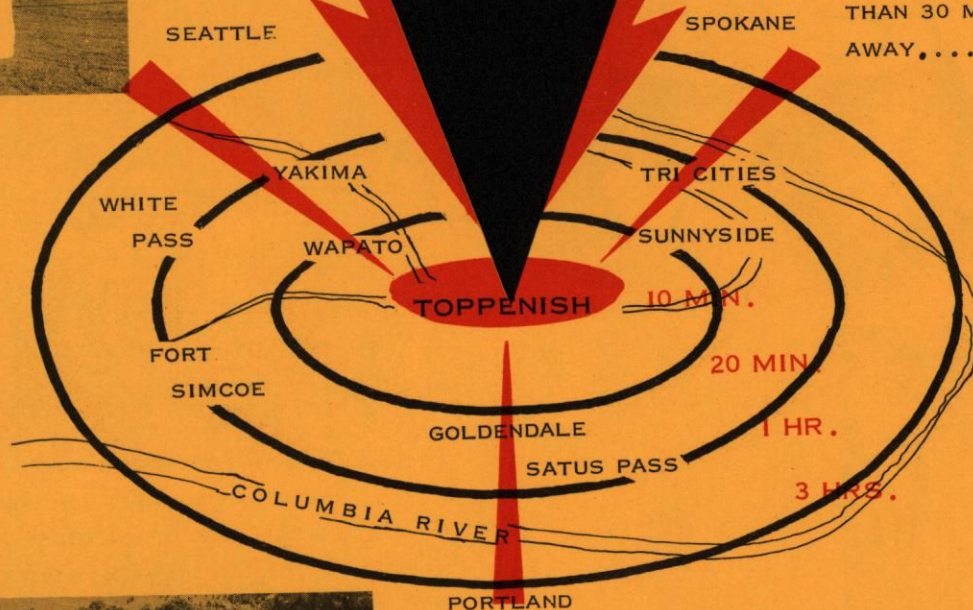
HUNTING AND FISHING  
IS PLENTIFUL IN THE  
AREA SURROUNDING  
TOPPENISH...



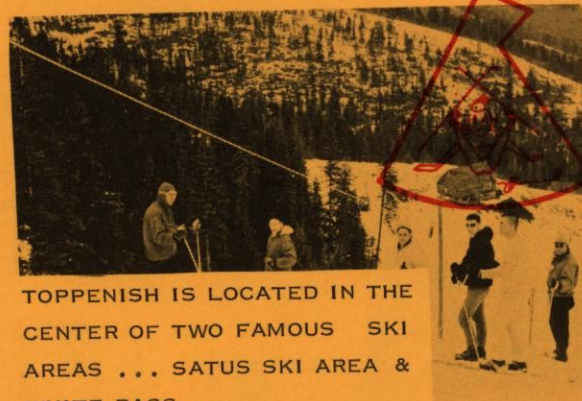
YAKIMA VALLEY COLLEGE ONLY 20 MINUTES AWAY...



TRANS-CONTINENTAL AIRLINES - LESS THAN 30 MINUTES - AWAY.....



FORT SIMCOE - LOCATED ONLY 23 MILES WEST OF TOPPENISH. A HISTORIC OLD ARMY POST THAT HAS BEEN RESTORED TO THE ORIGINAL OF IT'S ROMANTIC PAST OPEN TO PICNICS OR TO VISITORS FROM MAY THROUGH OCTOBER.



TOPPENISH IS LOCATED IN THE CENTER OF TWO FAMOUS SKI AREAS ... SATUS SKI AREA & WHITE PASS..

# The Bull's Eye of Washington

## TOPPENISH POW WOW & RODEO

FOR OVER FORTY YEARS THE RODEO HAS BEEN AN ANNUAL - WEEK LONG CELEBRATION - HIGH-LIGHTING DAYS OF THE OLD WEST - INDIAN ENCAMPMENT AND CLIMAXED WITH THE 4TH OF JULY PARADE AND 3 DAY RODEO.



### ALL GIRL RODEO

THIS UNIQUE RODEO IS HELD EACH YEAR IN AUGUST. IF STARTED 3 YEARS AGO - AND IS GROWING LARGER.. EVERY YEAR.....

### CENTRAL WN. JR. LIVESTOCK SHOW

THIS ANNUAL EVENT IS HELD IN APRIL - BRINGING EXHIBITORS FROM ALL OVER CENTRAL WN. 3 DAY SHOW - BUYERS FROM ALL OVER THE NORTHWEST ATTEND THIS EVENT TO PURCHASE SOME OF WASHINGTON'S FINEST LIVESTOCK.....



FOR ANY DATE ON THESE EVENTS AND ANY OTHER ACTIVITIES IN THIS AREA WRITE TO.....  
TOPPENISH CHAMBER OF COMMERCE

P.O. BOX 28 TOPPENISH WASHINGTON  
AREA CODE 865 - 3262

