

The

C
O
S
L
A

C
O
L
L
E
C
T
I
O
N



A. Renoir

French Drawings
Pastels and Watercolors

from the collections of
DR. AND MRS. O. K. COSLA

MARYHILL MUSEUM OF FINE ARTS, MARYHILL, WASHINGTON

ON COVER:

(56.) *Dancing Couple*. Auguste Renoir

Preface

Many of the drawings presented here have been exhibited in a number of galleries in Roumania, France, and Germany. After the collection was brought to the United States at the close of the Second World War it has been shown at the Mills College Art Gallery, Oakland, California; the Art Department of the College of the Ozarks, Arkansas; and was for a time circulated by the Western Association of Art Museum Directors. In 1950, Dr. O. K. Cosla lent the Museum the splendid charcoal drawings by Daumier, and in the ensuing years has added over fifty pastels, watercolors, and drawings by leading artists of the French School. This year, 1959, Dr. and Mrs. Cosla brought to Maryhill from their home in New York City the fine group of Pascin drawings, the Gauguin oil sketches, and a number of pen and pencil drawings by other equally well known French painters. With these additions, the Cosla Collection now numbers seventy-odd examples by artists who played a fundamental part in the development of modern art.

The Cosla Collection, remarkable not only for its size and variety of interest but equally for the high quality of the works it includes, is one which from the nature of its material is as attractive to the public as to connoisseurs. More than forty artists are represented; several painters not born in France but who are considered French through their training, figure among them. A few of the earlier works, which have been in the Cosla family for three and four generations, antedate the modern movement. Most of the drawings, however, are representatively modern, and were collected by Dr. and Mrs. Cosla. Their love for modern French art, and their desire to collect it, grew during their long stay in the capitals of Roumania, France and Germany, where Dr. Cosla held the post of Professor of Medicine on the faculties of several universities.

On indefinite loan, the collection is on permanent display in the corridor adjoining the Cosla Gallery of Paintings, which houses some sixty works of art by leading masters of the European schools of the 15th to the 19th centuries. This collection, too, which is separately catalogued, has for the past ten years been generously lent to the Museum by Dr. and Mrs. Cosla.

The Maryhill Museum of Fine Arts takes pleasure in expressing its grateful appreciation to Dr. and Mrs. O. K. Cosla whose generous and long-continued personal interest has contributed so much toward making this exhibition possible.

Catalogue

A. BAESU, 1900-1925

1. *Portrait of Dr. Cosla* crayon 7 $\frac{3}{4}$ "x5 $\frac{3}{4}$ " signed

MAURICE BLUM, 1832-1902

2. *The Three Musketeers* watercolor 6 $\frac{1}{2}$ "x5 $\frac{1}{2}$ " signed

JEAN BAPTISTE CARPEAUX, 1827-1875

3. *Sketch* fine pen and black ink 4 $\frac{1}{2}$ "x6 $\frac{1}{4}$ " signed
Ex Coll.: Francois Roche

EUGENE CARRIERE, 1849-1906

4. *Mother Love* charcoal and white chalk 12"x14" signed
Ex Coll.: Francois Roche
5. *Portrait* charcoal and white chalk 9 $\frac{1}{2}$ "x12 $\frac{1}{2}$ "
Ex Coll.: Mme. Rigaud

PAUL CEZANNE, 1839-1906

6. *Self Portrait* colored wood etching 11"x13"

JEAN BAPTISTE CAMILLE COROT, 1796-1875

7. *Sketch* oil on paper 6 $\frac{1}{2}$ "x8 $\frac{1}{2}$ "

JACQUES FRANCOIS COURTOIS (called Bourguignon),
1621-1676

8. *Battle* pen and black ink 6"x12 $\frac{3}{4}$ "
Ex Coll.: Ambard

HONORE DAUMIER, 1808-1879

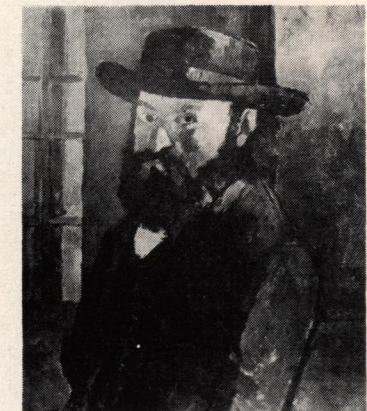
9. *Third Class Traveling* brush drawing and tempera 12 $\frac{1}{4}$ "x10"
signed
Ex Coll.: Edgar Degas
10. *A Laborer* point of brush drawing in black ink with black and
colored wash on buff colored paper 5 $\frac{1}{4}$ "x7 $\frac{1}{4}$ " signed
Ex Coll.: M. Fournier
11. *Chef L'Advocate* charcoal 29 $\frac{1}{2}$ "x20" signed
12. *Maternelle* charcoal 14 $\frac{7}{8}$ "x19 $\frac{1}{4}$ " signed
13. *Dernier Nouvelle* charcoal 22 $\frac{5}{8}$ "x18 $\frac{5}{8}$ " signed



(4)



(2)



(6)



(9)

PIERRE JEAN DAVID (called David D'Angers) 1789-1856

14. *Seated Boy* pencil and white ink 6"x6 1/4" signed
Ex Coll.: M. Boudin

EUGENE DELACROIX, 1798-1863

15. *Project Sketch for the Tomb of Delacroix* pencil and watercolor
6 1/4"x11 3/8" signed: monogram



(13)

LUCIEN LEVY DHURMUR, 1865-1932

16. *Etude pour Le Paneau du Palais de Justice; Paris* pastel over
pencil 18 1/4"x13 1/2" signed

ERNEST ANGE DUEZ, 1843-1896

17. *A Visit to the Beach* watercolor 19 1/2"x13 1/2" signed



(17)

JEAN LOUIS FORAIN, 1852-1931

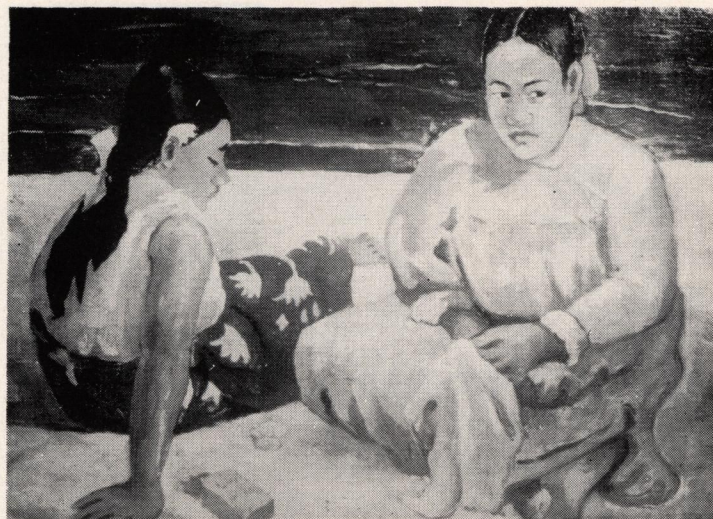
18. *Il Fait Trop Chaud* black ink and crayon 3 3/4"x5 1/2" signed
Ex Coll.: George Petit
19. *Le Rendezvous* black, yellow and pink wash over pen and
pencil 9"x5 1/2" signed
Ex Coll.: George Petit
20. *Jeune Fille* pastel over black ink 7"x9" signed
Ex Coll.: G. Cahen
21. *Encore Pour L'Amerique* brush drawing in black and watercolor
7"x9" signed
Ex Coll.: George Petit
22. *La Bonde* watercolor over pen and black ink 9 1/2"x6 3/4" signed
Ex Coll.: George Petit
23. *Le Rendezvous* watercolor over pen and black ink 9 1/2"x7"
signed
Ex Coll.: Mme. Dubreuil
24. *Les Avocats* brush drawing in black and black wash 8 1/2"x14 1/2"
signed
Ex Coll.: M. Gilbert
25. *Le Valet* drawn and shaded with brush point in black ink on
grey paper 9"x12 3/4" signed
Ex Coll.: M. Gilbert
26. *Le Cameau* watercolor over pen and black ink 8 1/2"x10 3/4"
signed
Ex Coll.: Baron Lecca
27. *Trop Tard* watercolor over brush and black ink 8"x6 1/2" signed
Ex Coll.: Baron Lecca
28. *Homme de loi* brush point drawing in black ink and grey wash
9 1/4"x11" signed
29. *Les Amoureux* brush and wash drawing in Indian ink
9" and 13" signed



(10)



(69)



(30a)

PAUL GAUGUIN, 1848-1903

- 30a. *Tahitian Women* oil sketch on paperboard 27 $\frac{3}{4}$ "x19 $\frac{1}{4}$ "

This sketch was bought in 1905 from Leon Gerard, rue de Frouot, Paris, and is one of three sketches made by Gauguin and refused by his art dealer, Ambroise Vallard, as being too sophisticated a representation. It has been said the sketches were made at the beginning of his synthetism period: negligence and simplification of drawing, with bright but studied flatness of colors. Painted in 1890 or 1891.

- 30b. *Still Life: Vase of Flowers* obverse of 30a

An example of Gauguin's earlier, impressionistic style, probably painted in the early 1880's when his work was influenced by Manet. At some time prior to 1905 blue paper was heavily glued over this painting and it remained concealed until its accidental discovery by Dr. Cosla in 1958.



(30b)

JEAN BAPTISTE GREUZE, 1725-1805

31. *Head of a Child* fine pen and brown ink 6 $\frac{1}{4}$ "x8"

In 1760, Ana de Clerici married William K. Cosla, Dr. Cosla's great-grandfather. She brought as a part of her dowry a fine group of Italian and Spanish paintings and a number of drawings, including this study of a head by Greuze.



(18)

JEAN JACQUES HENNER, 1829-1905

32. *Reclining Nude* charcoal, heightened with white 14"x8" signed
Ex Coll.: J. Y. Thivet



(38)

JEAN AUGUSTE DOMINIQUE INGRES, 1780-1867

33. *Portrait* pencil 6"x7 $\frac{1}{2}$ "

CHARLES EMIL JACQUE, 1813-1894

34. *Studies of Animals* brush and black ink, with light brown wash; six on one mount, each 3"x4" signed



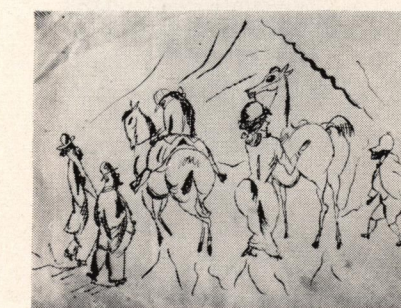
(37)

KAREL DU JARDIN, 1622-1678

35. *Landscape* point of brush and black ink, with black wash
8"x7 $\frac{1}{2}$ " signed
Ex Coll.: Ana de Clerici

FREDERIC KAEMERER, XLX Cent.

36. *In the Park* water color 8 $\frac{1}{4}$ "x14" signed
Ex Coll.: Capin



(49)



(31)



(60)



(42)

V. LAFARGE, born in 1816

37. *In the Farmyard* black pencil and crayon 16 $\frac{3}{4}$ "x11 $\frac{1}{2}$ " signed

ALBERT MARIE LEBOURG, 1849-1928

38. *River Scene* watercolor 8"x6 $\frac{1}{2}$ " signed
Ex Coll.: Baron Lecca

BARON G. LOWENTHAL, contemporary

39. *Portrait sketch of Dr. Cosla* pencil 12"x17" signed

EDOUARD MANET, 1832-1883

40. *Portrait of Isabella* watercolor 18 $\frac{1}{4}$ "x14 $\frac{1}{2}$ " signed with dedication and dated 1856
This portrait of Baroness Lecca, a close friend of Manet, is mentioned in Robert Rey's book on Manet. Reproduced: *Illustratia Romana*; Vol. 30, 1937.
41. *Self Portrait* brush and black ink 7"x9" signed
Ex Coll.: Baron Lecca

JEAN LOUIS ERNEST MEISSONIER, 1815-1891

42. *Le Brigadier* oil sketch on wood 6 $\frac{1}{4}$ "x8 $\frac{3}{4}$ " signed with dedication
43. *Les Natchez* crayon drawing on wood engraving block 5"x6" signed with monogram

JEAN FRANCOIS MILLET, 1814-1875

44. *La Maison a la Campagne* wood etching 9"x7"
Millet's Barbizon home

ALPHONSE DE NEUVILLE, 1835-1885

45. *The Return* watercolor 10"x15 $\frac{1}{2}$ " signed and dated 1870

ONOFREI, contemporary

46. *Portrait of Dr. Cosla* crayon 5 $\frac{7}{8}$ "x8 $\frac{1}{2}$ " signed and dated 1922

JULES PASCIN, 1885-1930

47. *Standing Nude* pencil 7 $\frac{3}{4}$ "x9 $\frac{1}{2}$ "
48. *Kneeling Nude* pencil 9 $\frac{1}{2}$ "x12"
49. *L'Hyprodome* pen and ink 8"x9 $\frac{1}{2}$ "
50. *Sketches* five pen and ink studies on one mount 11"x14"
51. *Figures* fine pen and ink over pencil 7 $\frac{1}{2}$ "x5 $\frac{1}{2}$ "
52. *La Toilette* fine pen and ink and sepia wash 6 $\frac{3}{4}$ "x8 $\frac{1}{4}$ "
53. *En Vacance* pen and ink and crayon 5 $\frac{1}{2}$ "x3 $\frac{1}{2}$ "
The Pascin drawings are each stamped with the seal and number of the Palais de Justice, Paris, where they were bought at auction in the 1930's.

CAMILLE PISSARRO, 1830-1903

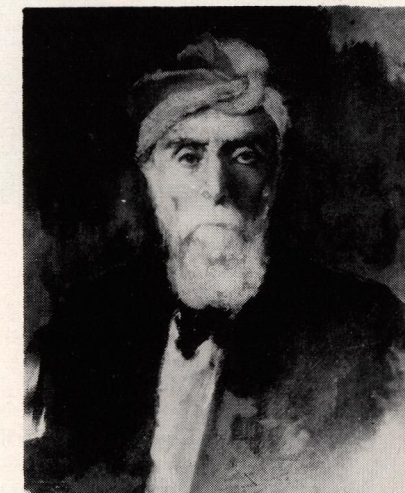
54. *Paysannes Plantant des Rames* charcoal 9"x11"
Ex Coll.: George Petit

DENIS AUGUSTE MARIE RAFFET, 1804-1860

55. *The Bandit* brush and black ink and black wash 6"x4 $\frac{3}{4}$ " signed
Ex Coll.: Prince Cantacuzene



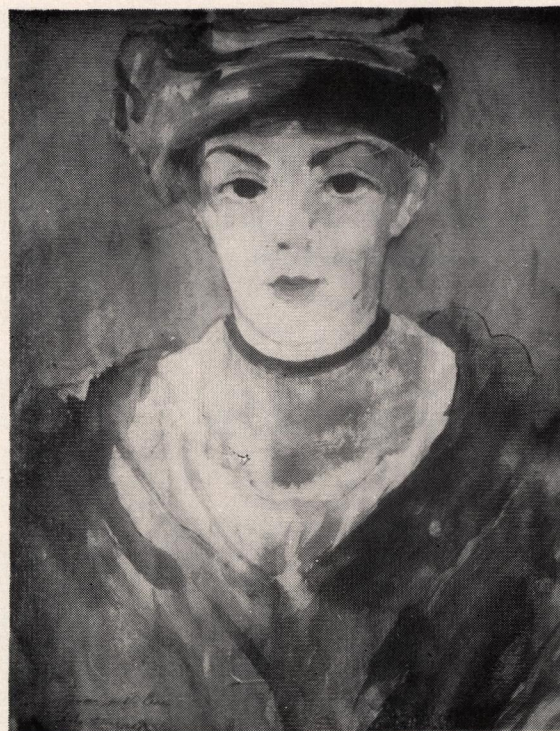
(68)



(67)



(72)



(40)

AUGUSTE RENOIR, 1841-1919

56. *Dancing Couple* black chalk $8\frac{1}{8}$ "x $11\frac{1}{8}$ " signed
Study for the central figures in the oil painting "*Le Bal a Bougival*"
in the Museum of Fine Arts, Boston.
Ex Coll.: Baron Lecca (Illustrated on cover)

FELICIEN ROPS, 1833-1898

57. *Satan* fine pen and black ink 4"x6" signed with monogram
Ex Coll.: J. I. Gerard
58. *Le Bonheur* fine pen and black ink 5"x $8\frac{3}{4}$ " signed with
monogram
Ex Coll.: J. I. Gerard
59. *Reverie* fine pen and black ink $8\frac{1}{4}$ "x5" signed with monogram

ROSENTHAL, contemporary

60. *Portrait of Mrs. O. K. Cosla* charcoal and colored chalk
 $8\frac{3}{4}$ "x $11\frac{3}{4}$ " signed and dated 1938

THEODORE ROUSSEAU, 1812-1867

61. *Landscape* black crayon 10"x $7\frac{1}{2}$ "
Ex Coll.: Gillet

KER-XAVIER ROUSSEL, 1867-1927

62. *Summer* watercolor $10\frac{3}{4}$ "x16" signed and dated

THEOPHILE A. STEINLEN, 1859-1923

63. *In the Line* cartoon for a war poster crayon $8\frac{3}{4}$ "x $11\frac{1}{2}$ "
64. *Group of Three Women* crayon $7\frac{1}{2}$ "x8" signed
65. *Au Cafe* brush and black ink $9\frac{1}{2}$ "x $16\frac{1}{2}$ " signed
Ex Coll.: Baron Lecca; Leon Gerard
66. *A Soldier* pencil $4\frac{1}{2}$ "x6" signed
67. *Portrait of Anatole France* oil on canvas $19\frac{1}{4}$ "x24" signed

GEORGES SEURAT, 1859-1891

68. *L'Aimee* watercolor $19\frac{3}{4}$ "x26" signed
Ex. Coll.: Baron Gross; R. Richat



(75)



(39)



(70)



(33)



(57)



(36)

CONSTANT TROYON, 1810-1865

69. *Landscape* pastel 14"x11½"

MAURICE UTRILLO, 1883-1956

70. *Cabaret Au Lapin Agile* oil on paperboard 20¾"x14½"
signed
Ex Coll.: Eugene Descaves

HORACE VERNET, 1789-1863

71. *Nude Athlete* pencil 11½"x8½" signed

EDOUARD VUILLARD, 1867-1940

72. *The Seamstress* brush and Indian ink and white wash on blue
paper 11¾"x14¼" signed: E. V.
Ex Coll.: F. Strauss

E. VUILLEFREY, XIX Cent.

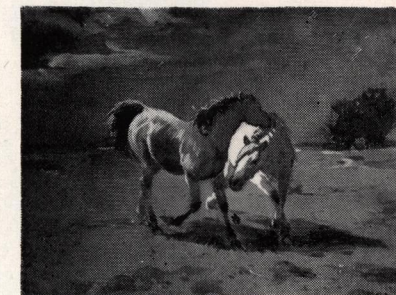
73. *Love of Horses* watercolor 10¼"x7¾" signed

ADOLPHE WILLETTE, 1857-1926

74. *War Episode* point of brush and black ink with touches of
watercolor 7"x8¾" signed and dated 1914
75. *Drawing Allegoric* pencil 20"x15" signed



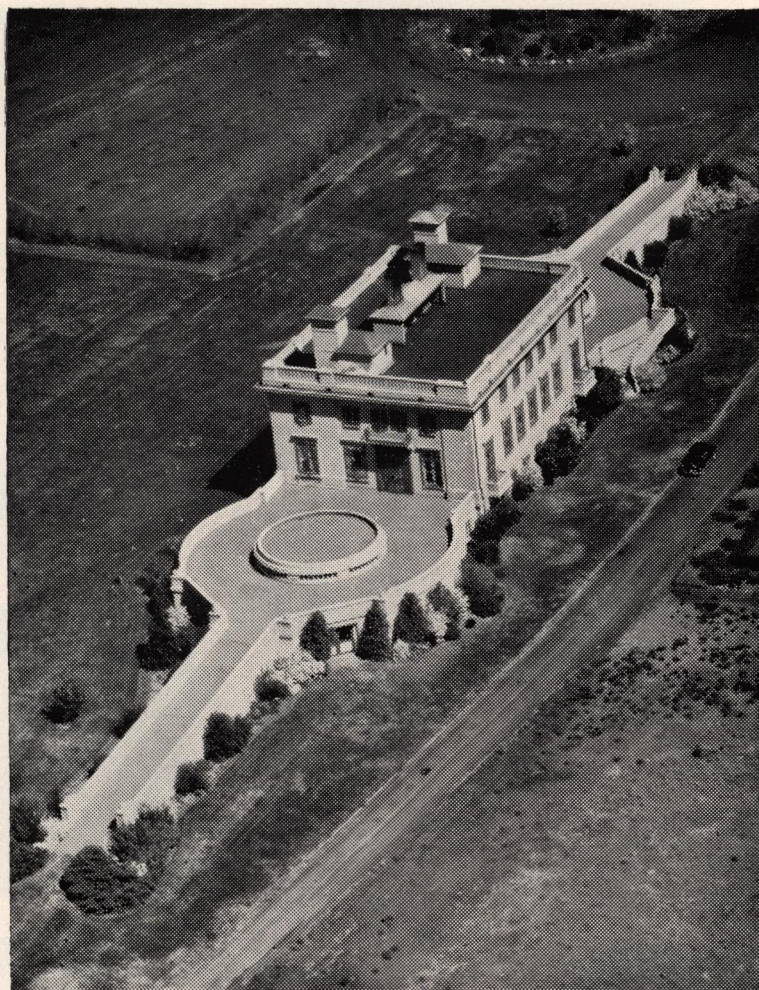
(65)



(73)



(24)



100 Miles East of Portland on U. S. Highway 830, at Maryhill, Washington

MARYHILL MUSEUM OF FINE ARTS

SAMUEL HILL, Founder

TRUSTEES

MRS. A. B. SPRECKELS
Honorary Chairman
San Francisco, California

DANIEL B. HILL
President
Seattle, Washington

DR. THOMAS E. GRIFFITH
Vice-President
The Dalles, Oregon

JAMES G. SCRIPPS
Treasurer
Seattle, Washington

CAPTAIN A. LEPPALUOTO
Vancouver, Washington

HAROLD E. WOLVERTON
Goldendale, Washington

ZOLA O. BROOKS
Goldendale, Washington

ARTHUR G. DUNN
Seattle, Washington

CLIFFORD R. DOLPH
Director
Maryhill, Washington