

Stehekin

THE HEAD OF

Lake Chelan



How to Arrive at Stehekin

By Highway—Take U. S. Highway 97 from Wenatchee to Chelan, then via Lake Chelan Boat Co., or the Chelan Airways to Stehekin.

Motor Coach—By Greyhound Bus Lines into Chelan, then via Lake Chelan Boat Co. or Chelan Airways.

By Train—Great Northern into Wenatchee, Greyhound Bus to Chelan and Lake Chelan Boat Co. or Chelan Airways to Stehekin.



Swissmont

Accommodations at Swissmont offer an excellent view from your own window, comfort, private baths (showers) and are equipped for light cooking for those who care to do so. Guests of Swissmont will find good and tasty meals at Beryl's Coffee Shop and are always welcome to enjoy the dining room of the Golden West Lodge. For reservation, write Swissmont, Stehekin, Wash.



Curt and Beryl's

The dining room at Curt and Beryl's offers a view of the lake and a fireplace to add to the enjoyment of fine food. The coffee shop is a popular snack bar throughout the day. Curt's Tavern, in addition to offering fine beverages, keeps a supply of fishing equipment. U-drive cars are available at Curt's.



Guy R. Imus

Pack Trips and Saddle Horses

The Stehekin area offers many choices for pack trips from two days to two and three weeks. Glaciers, high rugged peaks, alpine meadows, high lakes and excellent fishing may be all yours on pack trips in the Stehekin area. Write Guy R. Imus, Stehekin, Wash.



Golden West Lodge

Golden West Lodge operates on the American plan. Rooms with private bath are available, rooms without bath have access to conveniently located facilities, and there are housekeeping cabins with and without private bath. The Lodge makes every effort to have its dining room serve good meals and please the tastes of its guests. Guests of Swissmont and others are always welcome. Write to Golden West Lodge, Stehekin, Wash.



Stehekin

Stehekin, in the heart of the Cascades, is located at the head of 55-mile-long Lake Chelan. Rugged peaks, high mountain lakes, countless streams and glaciers make this area known as "The Switzerland of America." Arrival at Stehekin can be made only by boat or plane. However, once at Stehekin, you will find 28 miles of road winding along the Stehekin river into the glacier area, thus giving access to many miles of scenery second to none and miles of fishing on the Stehekin river and the many tributary streams, such as Bridge Creek, Company Creek, Rainbow Creek, etc. The head of the Lake, the Stehekin river and the many tributary streams offer a variety of fly, spinning, casting, trolling, and bait fishing. Cutthroat, Rainbow, and Silver trout offer a thrill to the man with a pole. Horses for riding and pack trips are available at the corral of Guy R. Imus, who is a neighbor of both Swissmont and Golden West Lodge. Boats are available at Golden West Lodge and Swissmont. The photographer will find a constant source of subjects that will keep him as busy as he may desire. And the person who wants an easy chair, good view, and lots of just plain loafing can find Stehekin his answer. It's your vacation—Stehekin wants to help you enjoy it.

We have no mosquitoes at Stehekin.



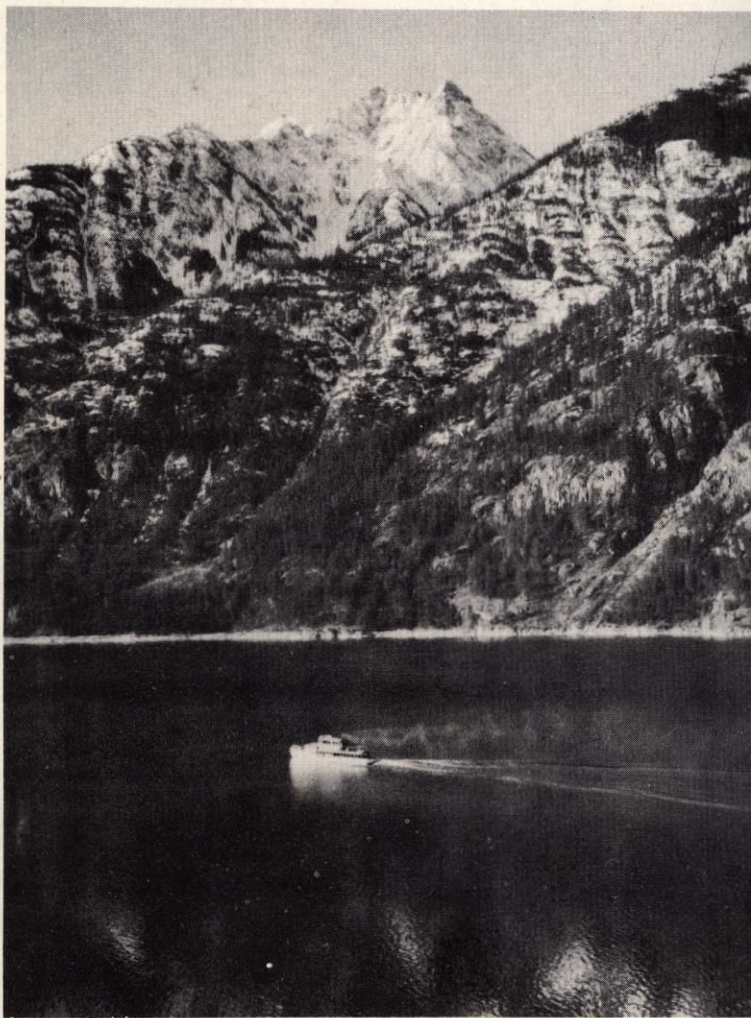
Camp Stehekin

Located on the Stehekin river close to the head of the lake, Camp Stehekin has housekeeping cabins. These cabins are completely furnished and each has a cold water tap. Central shower and toilet facilities exist. Arrangements can be made for car service for those wishing to eat any meals at Stehekin. Write to Camp Stehekin, Stehekin, Wash.

LAKE CHELAN BOAT CO.

A round trip from Chelan to Stehekin is made daily, May 15 to September 30.

Leave Chelan.....	8:30 a.m.
Arrive Stehekin.....	12:45 p.m.
Leave Stehekin.....	1:45 p.m.
Arrive Chelan.....	5:30 p.m.



CHELAN AIRWAYS

Chelan Airways will fly you from Chelan to Stehekin—direct to Golden West Lodge and Swissmont.

If you arrive in Chelan in mid-morning or afternoon, contact Chelan Airways and fly to Stehekin in time for lunch or dinner. Phone No. 1.