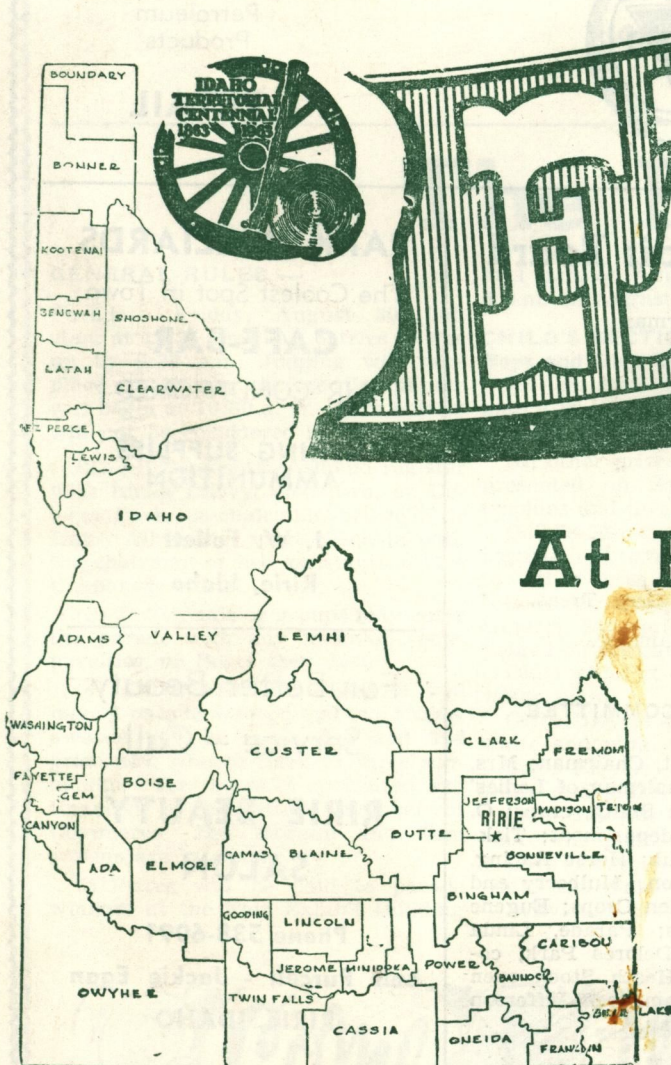


1963 - Thirtieth Annual - 1963

# JEFFERSON COUNTY



At RIRIE, IDAHO

Friday and

Saturday

August 30 - 31

## FRIDAY, AUGUST 30th EVENTS —

- 9:00 a.m. — Judging 4-H Livestock Projects.
- 10:00 a.m. — Judging F. F. A. Projects.
- 10:30 a.m. — PARADE, Junior, Churches, Organizations and C. of C. Divisions.
- Arc Way Shows and Rides on the Fair Grounds.
- 2:00 p.m. to 4:30 p.m. — Fast Horse Racing, Calf Roping, Saddle Horse Races, and others.
- 7:00 p.m. — Adult saddle horse show, two classes; work and pleasure. Trophy award in each class. Also Junior 4-H horse show. Trophy award. Feature will be six top 4-H club acts, followed

by the Silver Sage Riders of Pocatello, an all women in a square dance on horses. Finale of evening aerial fireworks.

## SATURDAY, AUGUST 31st EVENTS —

- 9:00 a.m. — Open Class Stock Judging.
- 10:30 a.m. — "Little League Baseball Game."
- 1:00 p.m. to 3:30 p.m. — Horse Racing Program.
- 7:00 p.m. — Night Show at Grandstand Arena, "Little Buckaroo Rodeo". 46 boys, age 8 to 13 will compete for Championship.



**TOM ADAMS**  
**Conoco Agent**  
 Super Motor Oils  
 Fuels  
 Gas and Oil  
 Farm - Domestic  
 Industrial  
**WHOLESALE**  
 Phone 538-6551

## CONOCO PRODUCTS

**FIRESTONE T. B. A.  
 RIRIE IDAHO**



**ADAMS  
 SERVICE CENTER**  
 Tire Service  
 Vehicle Repair Service  
 Service In  
 Petroleum  
 Products  
**RETAIL**

### See Us . . .

Before Buying Your  
 Petroleum Products  
 Seeds, Farm Machinery  
 Fertilizer and Hardware

### JEFFERSON CO-OP SUPPLY

Phone 745-6512  
 RIGBY, IDAHO

**SAM & LILL'S**  
**CAFE AND  
 CONFECTIONERY**  
 HOME COOKED MEALS  
 Eat Here  
 Popular Prices  
 MAIN STREET  
 RIRIE, IDAHO

### County Fair Board

Irvin Harrop, Chairman  
 LaVor McCrary  
 O. W. Robison  
 Wm. Shupe, vice chairman  
 Worth Smith  
 Rex Gooch  
 Merrill Banks  
 Mrs. Leda Madsen, Secy.-Treas.  
 Carl M. Shaner, Manager.

#### EXECUTIVE COMMITTEE

James E. Durrant, Chairman; Mrs. Edith Summers, Chairman of Ladies' Department; Worth Smith, crops; O. W. White, trophy department; Tickets, Ririe Lions Club; Horse Racing, Keith Johnson; Don Mulberry and Sach Mikami, Garden Crops; Eugene Brown, Concessions; Parade, Linda Davey, chairman, Delores Park, co-chairman; Charles Heath, Stock, open entry; Queen Committee, Jefferson County Farm Bureau.

### PARK BILLIARDS

The Coolest Spot in Town

#### CAFE-BAR

AIR CONDITIONED

#### FISHING SUPPLIES AMMUNITION

J. W. Follett  
 Ririe, Idaho

For Better Beauty  
 Service - Call

### RIRIE BEAUTY SALON

Phone 538-6091  
 Lois Purcell - Jackie Egan  
 RIRIE, IDAHO

### "IDAHO CENTENNIAL ON PARADE"

at the

## EASTERN IDAHO STATE FAIR

in  
**BLACKFOOT**

**SEPTEMBER 10 - 11 - 12 - 13 - 14**

Old and New Exhibits - An All New Ice Show: "Ice Vogues" - Horse Racing  
 Horse Pulling - 4-H Horse Show - Siebrand's Carnival  
 Tickets for Ice Show on Sale Aug 15 — \$2.00, &1.75, \$1.00

Sporting Goods \* Kodaks \* Electrical Supplies \* Gift Items \* Veterinary Supplies

Established 1925

Phone 745-7042

## REED DRUG, INC.

PRESCRIPTION PHARMACY

134 East Main

RIGBY, IDAHO

Rexall Store

Fountain

# The Parade

#### GENERAL RULES —

Parade— Friday, August 30, will start at 10:30 a.m. All entries to line up by 9:30 a.m. Judging will take place at 10 a.m. before the parade will begin at 10:30 a.m. Late entries will not be considered in the contest.

(2) All float entries should register with Linda Davey, chairman, or Delores Park, co-chairman, before Fair Day. All entries must check in with the chairman or her assistants before the parade starts.

(3) Individuals or groups may enter the parade with any make-up, pets, novelties, or floats they desire.

(4) COMMERCIAL FLOATS will have a parade division and two trophy awards will be made, 1st and 2nd prize, also ribbons for next three runnersup. This event is sponsored and financed by the Ririe Chamber of Commerce; Jim Morgan and Tom Adams are in charge.

(5) Prizes will be paid to parade winners at the Fair Exhibit Building

at 1 p.m. on Aug. 30, and from 2 to 6 p.m. on August 31.

#### CHILD'S SECTION: Boys and Girls Under 14 years

All children who will enter and march in the parade, will receive the usual 25 cents.

All other prizes will be ribbons and presented on Saturday, with other trophies and awards.

Child's Float, 1st, Blue ribbon and regular red, white and pink ribbons for other three places.

Girls' Marching Section —1st, prize trophy; 2nd prize trophy. Will be judged on marching and originality.

Child with Pet — Ribbons, blue, red, white, pink.

Girl's Bicycle — Ribbons, blue, red, white and pink.

Boy's Bicycle — Ribbons, blue, red, white and pink.

Girls' Tricycle — Ribbons, blue, red, white and pink.

Boys' Tricycle — Ribbons, blue, red, white and pink.

Individual makeup, either boy or

girl, one class only — Ribbon, blue.

#### ADULT SECTION:

Clubs and Organizations Floats or individual, 1st; 25.00; 2nd, \$15.00; 3rd, \$10.00 and 4th, \$5.00.

#### CHURCH FLOATS:

and 4th \$5.00.

1st \$25.00; 2nd, \$15.00; 3rd, \$10.00 All communities are urged to participate with Anniversary or Old-Timer Floats.

The parade will assemble on 2nd West Street, from the L.D. S. Church north, with Junior Division of Parade in lead, following the color guard, which will be by the Rigby V.F.W. Post; then proceed south to Osborne Street, then east to Main Street, and proceed north on Main Street to the Presbyterian church, turn west and dismiss.

The parade will be under the direction of Linda Davey, Chairman and Delores Park, co-chairman, Jolene Morgan, Donetta Housley, Sarah Jane Carnes, Marvinir Buck and June Lovell, Marie Miller, George E. Lovell, and Mrs. Deloy Coles, assistants.



## MODERN PLUMBING and HEATING, INC.

— SERVICE AT ITS BEST —  
 PHONOGRAPH RECORDS — GIFT ITEMS

Crane - Kokle - - American Standard

Lennox Furnaces - Peerless Pumps

PHONE 745-7021

RIGBY IDAHO



## MARSHALL FURNITURE CO.

GENERAL ELECTRIC APPLIANCES  
NATIONAL BRAND FURNITURE

Simmons Beauty-Rest Mattresses  
Mohawk Carpets — Maytag Washers

Phone 745-6881

Rigby, Idaho

## MOUNTAIN STATES IMPLEMENT COMPANY

Oliver Farm Equipment - Calkins Weeders  
Sub Soilers - Delaval Milkens and Coolers  
Gehl Choppers and Harvesters  
Look, Try, Buy, New 1600, 1800, 1900 Wheel Tractors

Congratulations to the farmers of Jefferson County for better yield from year to year. We are proud of the part Oliver Equipment has contributed to the record.

IDAHO FALLS, IDAHO

## General Fair Instructions

(1) The Jefferson County Fair Board or the City of Ririe, will not be responsible for any acts of violence or injuries to any person or for any loss or injury. All risks are assumed by the contestants, exhibitors and spectators, or any persons, nor will they be responsible for other kinds of accident to person or vehicle.

(2) All entries must be entered with the chairman in charge of the department by the time designated for entry. The management reserves the right to reject late entries or entries in any way objectionable.

(3) All entries except livestock must be grown or made since the last fair. No exhibit will be accepted for contest that has been repeatedly exhibited at the Ririe Fair, but will be placed on display only.

(4) Articles for display can be entered anytime.

(5) All classes must have three entries in order to pay 1st, 2nd and 3rd prizes. Single or double entries will be judged on their individual merit

based on the standards of perfection for the particular class. In all cases the judges decision will be final.

(6) All racing stock, posse and other arena contestants will enter fair grounds through the gate on Main St.

(7) F.F.A., 4-H and open class stock entries will enter fair grounds through the gate on First West Street.

(8) Hay for feeding and straw for bedding will be furnished.

(9) Open Class exhibits in Fair Building can enter articles Wednesday evening and final entry time will be 9:00 p.m. Thursday evening, August 29— this will include all nature of exhibits, baking, needle work, crops, art pictures, flowers, etc. Due to the exceptional parade which will be held Friday, 10:30 a.m. the Fair Building will be closed from 10 a.m. to 11:30 a.m. A night watchman will be on duty all night for the week of the Fair in the exhibit building; also a night watchman will be on duty Thursday night and Friday night at the Stock barns and pens, for protection of exhibitors.

Also, all exhibits to be placed in exhibit building can be entered Thursday, August 29 in the evening to 9 p.m. and exhibitors are urged to do so this year and save last minute congestion. All open entry livestock entries must be in Friday at 9:00 a.m. and remain until 5:00 p.m. Saturday, August 31st.

Pens for livestock will be reserved for those listing entries at the County Agent's office before fair dates. Animals will be checked at the gate for health requirements, as is listed under livestock. Those not complying will not be admitted to the grounds.

(10) Under no condition will any committee member be allowed to Judge or bargain with contestants on any exhibit or event. If a question arises it shall be settled by the general committee. And the executive committee reserves the right to interpret all rule and regulations.

(11) All Produce and ladies' exhibits will be shown at the Fair Exhibit

buildings also; 4-H and F.F.A. crop exhibits. All stock will be exhibited at the Fair Ground Barns and Pens at the north end of 1st West Street.

(12) All slips or claims for prize money or exhibits or cash awards for other events on which prize awards are made must be presented to the Fair Secretary-Treasurer for cash. Her office will be open from 1 p.m. to 2:00 p.m. on Friday, August 30 for Parade prizes and on Saturday, August 31 from 1 to 6 p.m. at the Fair Building.

Fay Anthony and Marlon Rowan, committeemen in charge of the sound system and announcing. Please see them for any announcements, or spots on the program, also direction of the parade.

Arrangements have been made for all entries, of any nature that is only one item to be placed in a separate booth. All will be judged, and credit will be given the exhibits, as to rating such as, first, a blue ribbon, etc.; and cash awards will be paid; on the 3rd prize amount should two items be entered of like nature and they warrant a 1st and 2nd award, the ribbons noting this honor will be given, but cash award will be the amount of 2nd prize in each case. Outstanding single entry will receive a 1st cash award.

Ribbons will not be evidence of a cash award, the order slips of the department will be an order on the treasurer for cash awards in all manner of exhibitors, crops, stock, etc. Organizations and church wards or Clubs are encouraged to arrange their exhibits in a booth, or arrange a booth of their exhibits, prizes will be awarded in cash — 1st \$6.00; 2nd \$4.00; 3rd \$3.00 and 4th \$2.00 See Mrs. Edith Summers.

QUEEN OF THE FAIR:  
Queen contest will be sponsored by the Jefferson County Farm Bureau. Queen of the fair and two runners-



## GATEWAY SERVICE -- DRIVE-INN & CAFE

Tires — Batteries — Accessories — Sporting Goods

Fishing and Hunting Licenses — Picnic Supplies

Lunch Supplies — Refreshments — Package Beverages

PHONE 538-7771

HARRY & DELLA FOLSOM

## FINE FOODS

Steaks — Shrimps — Chicken — Sandwiches

Malts — Shakes — Box Lunches — Cold Drinks

RIRIE, IDAHO

buildings also; 4-H and F.F.A. crop exhibits. All stock will be exhibited at the Fair Ground Barns and Pens at the north end of 1st West Street.

(12) All slips or claims for prize money or exhibits or cash awards for other events on which prize awards are made must be presented to the Fair Secretary-Treasurer for cash. Her office will be open from 1 p.m. to 2:00 p.m. on Friday, August 30 for Parade prizes and on Saturday, August 31 from 1 to 6 p.m. at the Fair Building.

Fay Anthony and Marlon Rowan, committeemen in charge of the sound system and announcing. Please see them for any announcements, or spots on the program, also direction of the parade.

Arrangements have been made for all entries, of any nature that is only one item to be placed in a separate booth. All will be judged, and credit will be given the exhibits, as to rating such as, first, a blue ribbon, etc.; and cash awards will be paid; on the 3rd prize amount should two items be entered of like nature and they warrant a 1st and 2nd award, the ribbons noting this honor will be given, but cash award will be the amount of 2nd prize in each case. Outstanding single entry will receive a 1st cash award.

Ribbons will not be evidence of a cash award, the order slips of the department will be an order on the treasurer for cash awards in all manner of exhibitors, crops, stock, etc.

Organizations and church wards or Clubs are encouraged to arrange their exhibits in a booth, or arrange a booth of their exhibits, prizes will be awarded in cash — 1st \$6.00; 2nd \$4.00; 3rd \$3.00 and 4th \$2.00 See Mrs. Edith Summers.

show Friday and Saturday will be 35c for children and 75c for all over 12 years of age.

Friday Night, August 30th, 7:00 p.m. will be the adult horse show in contest for top honors in pleasure horse class and work horse class. No. 3 horse showing will be the Junior 4-H horse showing, in each of the three a trophy will be awarded. Followed by Six acts, who were top winners from the County 4-H elimination contest, held in July. And next on the program will be the Square Dance of all women on horseback from Pocatello, known as the Silver Sage Riders, and the final event of the evening will be 30 minutes of aerial fireworks. Admission 25c, kids, and 50c adults.



Saturday Night Show will start at 7:00 p.m. opening with presentation of all trophies and awards for stock and produce winners, furnished by many business firms and organizations, followed by the first go-round of the "Little Buckaroo Rodeo", featuring all shetland horses, some donkeys and calves in the bucking classes, calf roping, and pony scramble as the finale; 46 local boys will be required to ride in these events, six trophies will be awarded for top honors; champions at this show will be eligible to enter finals for state riding honors. And, during intermission an exhibition of little tots square dance will be held in the arena. Also, an "Old-Timers" quadrill, both under the direction of Mrs. Keith (Delores) Park.

Contestants applications for the Buckaroo Rodeo are available at the County Agent, Rex Gooch's office; at the Adams Service Center Garage.

Grandstand tickets for afternoon

## BLAINE J. ROWAN AGENCY

INSURANCE - REAL ESTATE - LOANS  
BONDS - HAIL

118 North State Street  
Phone 745-6911

Rigby, Idaho

## SPRINKLER HILL PRODUCE, INC.

CONGRATULATIONS AND SUCCESS TO THE COUNTY FAIR

Buyers and Shippers of Top Quality Potatoes

ANHYDROUS AMMONIA

All Kinds of Fertilizer — Farm Chemicals — Baler and Binder Twine

Ririe, Idaho

Earl Hunter, Mgr.

Phone 538-7729

## THE IDAHO FIRST NATIONAL BANK

Idaho's Pioneer Bank — Idaho Owned

— Complete Banking Service —

MEMBER OF FEDERAL DEPOSIT INSURANCE CORPORATION

Established in 1867  
RIGBY OFFICE



## RIRIE PRODUCERS CO-OP

THE PEOPLE'S SERVANT

Dealers in Quality Merchandise  
Petroleum Products

Service Station Phone 538-7921

Ririe, Idaho

## BROWN'S GROCERY

WE WELCOME YOU TO OUR  
30th FAIR

Groceries — Meats — Vegetables  
Refrigerated Locker Service

RIRIE, IDAHO — PH. 538-7721

# Women's Department

Mrs. Edith Summers is Chairman of All Women's Departments.  
**FLOWERS**— Mrs. Opal Eddins, and Jessie Morgan and Phyllis Rosenboroh.

(Please bring your own containers.)

No prize will be awarded on a flower exhibit with less than 3 flowers on display.

Flowers as listed will be given 75c for 1st; 2nd, 50c; 3rd 25c, with ribbon.

Display of each: Dahlias, Gladiolus, nasturtiums, Ruffled-Plain Petunias, Pansies, Roses, Snapdragons, Zinnias, Asters, Daisies, Phlox, Sweet Peas, Chrysanthemums, Hydrangeas, Marigolds (dwarf-large), Delphiniums, Balsams, Goldenglow, and Clarkia.

Potted Plants — Display of mixed bouquet.

For arrangements of display in this special division, see Mrs. Edith Summers.

### CANNING EXHIBITS:

Mrs. Velma Dutton, Chairman.

Prizes, 75c, 50c and 35c — 3 jar entry in each class.

Vegetables — Corn, Peas, Beans, Beets, Mixed Vegetables.

MEAT— Beef, Pork, Chicken, Fish.

FRUIT—Strawberries, Raspberries, Apricots, Peaches, Pears, Apples, Cherries can be any variety, 1 jar each.

JAM—Any kind, 1 jar.

JELLY— Any kind, 1 jar.  
PICKLES — Sweet mixed, Sweet plain, Dill, Mustard, ellishes.

Entry Amount: 1 pint or quart, except Jelly, which can be pint or glass. One jar asked in all canning exhibits.

### BAKING EXHIBITS—

Thelma Myler, Chairman and Cleova Johnson.

Prizes— \$1.00, 50c, and 35c.

Any 4-H girls baking exhibits will be eligible for entry in open class, if they remove prize ribbons and enter as adults.

BREAD—White, Brown, Raisin.

ROLLS—Pan rolls, Light rolls, Cinnamon rolls.

CAKES— Plain cake, Devils Food cake, Applesauce cake, Banana nut cake, German Chocolate cake, Novelty cake, Fancy Decorated cake, Angel

Food cake and Chiffon cake. DO NOT PUT ICING ON THESE LAST TWO CAKES.

COOKIES— Filled cookies, Drop cookies, Ice Box cookies.

PIES— Crusted pies, Open Faced pies, Fruit pies and Cream pies.

CANDY— Divinity, Fudge, Taffy, eight pieces of each.

### 1963 NATIONAL WOOL NEEDLE- WORK CONTEST:

All entries must be knitted or crocheted using 100% wool yarn, and will be judged in the 2 groupings:

Class A. Afghans

B. Sweaters.

C. Stoles, scarves and shrugs

D. 3 piece baby sets (jacket, cap, booties.)

E. Socks, gloves and mittens

All entries must have been made since January 1, 1963. Blue, red and white ribbon awards. Winners will be shown at State Fair, winner then will be given national honors. To be eligible for this you must be a winner in any of the five classes at the County Fair. Contact Mrs. Edith Summers, Ririe, Idaho, for details.

### ART NEEDLE WORK:

Mrs. Betty Chase, Chairman, and Mrs. Thelma McMurtrey.

Three entries in each division before top prize can be given. Not over three exhibits permitted by any one person in any one class of exhibits.

## EARL HANSEN AGENCY

FOR ALL YOUR  
INSURANCE NEEDS

RIGBY, IDAHO

Phone 745-6663

Read

THE POST REGISTER

Since 1880

## DANSIE JEWELERS

RIGBY, IDAHO

WATCHES - DIAMONDS  
TROPHIES and  
ENGRAVING

Gifts for All Occasions

## DAVIS CONOCO SERVICE

United Delo Tune-up Service — Heyer Dynavission

Brake Service — Brake Drum Lathe

CONOCO GAS AND OILS

Main & Hewitt WES DAVIS 538-7461 - Ririe, Idaho



Prizes — \$1.00, 75c and 50c.  
Pillow Cases — Embroidered, Crocheted, Textile painted, Knitted, Netting, Tatting.

Baby — Baby hood, Bonnet, Sweater and dress.

Apron — Front Apron plain, Fancy, Crocheted.

Textile Painting — Table Cloths, Scarfs, Hankies.

Pot Holders — Crocheted, Plain, Fancy, Gingham.

Doilies — Novelty, Crocheted.

Center Pieces — Painted, Crocheted, Embroidered.

### QUILTS:

Mrs. Earthe Campbell, Chairman and Mrs. Etta Wheeler

Prizes — \$2.00, \$1.00 and 50c

Bedspreads — Crocheted or Fancy

Embroidered Quilts

Cotton Pieces

Applique Design

Silk and Velvet Pieces

Plain Quilt

Most Unusual Design, \$1.00.

Child Quilt in Cotton

Painted Quilts

Silk Quilts, large

Afghans

Hand Made Rugs — Braided, Crocheted or Hooked

### ANTIQUES:

Mrs. Mildred Freckleton, Chairman and Mrs. Betty Rowan

The antique department has been enlarged with ample exhibit space,



small items will be on display in show cases, 1 award will be made to the person with antique exhibit for one or more items and display articles are welcome. Special display space is provided for the centennial exhibits, and careful attention will be given to all; also, a watchman on night and day.

### AMATEUR ART:

Mrs. Margaret Lemmon, chairman, and Mrs. Donna Carlyle.

Only original work will be accepted and only one entry in each class, and no article will be entered to compete in more than one class.

Entries must be made Thursday— will be recorded August 29, 5:00 p.m. through 9:00 p.m. Please send or bring your picture exhibit early.

Judging will be August 30, from 8:00 a.m. to 9:30 a.m.

The name of the artist must be attached to the back of the specimen. Names will be covered during the judging.

All pictures must be called for by

the exhibitor or his agent, preferably between the hours of 5 and 7 p.m. on Saturday, August 31.

### Amateur Division— Class:

1. Landscape, in oil.
2. Landscape, in pastel.
3. Landscape, in other mediums.
4. Still Life, in oil.
5. Still Life, in pastel.
6. Still Life, other mediums.
7. Portrait or figures, any medium.
8. Animals, any medium.
9. Sketches in ink, crayon, charcoal, pencil, etc.
10. Design or abstraction, any medium.

Prizes, \$1.00, 50c, and 35c.  
Trophy will be awarded outstanding exhibit. Sponsored by Ririe Lions Club.

### SCHOOL CHILDREN'S ART EXHIBIT CONTEST

To 6th Grade:

1. Animal
2. Landscape
3. Still Life

7th to 9th Grades Inclusive:

Same as above.

10th to 12 Grades Inclusive:

Same as above.

Only one entry to be made in each class. Each contestant may enter 3 pictures but they must be in the three separate classes.

## RIRIE MERC.

GROCERIES — DRY GOODS  
and NOTIONS

Phone 538-7261

RIRIE, IDAHO

MARVIN BUCK, Mgr





**WHITE STAR**  
Laundry and  
Sanitone Cleaners  
IDAHO FALLS, IDAHO

RIRIE AGENCY —  
**RED'S BARBER SHOP**

**DELUXE**  
**CLEANERS**

Quality  
Cleaning  
Phone 745-6762  
Rigby, Idaho

When Quality Is Demanded  
It Is

"By FARR the Best"  
**FARR CANDY CO.**  
Ice Cream, Candy  
IDAHO FALLS, IDAHO

## Livestock - Open Entry

Merrill Banks, Chairman; Rex I. Gooch, assistant.

All stock must be entered by 9 a. m. Friday, August 30 for competition. They must remain at the Fair until 5 p.m. Saturday, August 31.

All exhibitors must be present at the time of judging to be eligible for prize awards. Classes may be divided or consolidated according to the number of entries in each class.

### HEALTH REQUIREMENTS FOR CATTLE

**Dairy Cattle** — All dairy cattle over six months of age offered for exhibition purpose at the Fair shall have passed an official negative agglutination blood test for Brucellosis (Bang's) disease within sixty days of the date of the fair. A certificate of Bang's vaccination by a deputy State veterinarian will be accepted up to thirty months of age, provided the animal was vaccinated between the ages of 6 and 9 months, and carries a tattoo in the ear for verification. Tests must be approved by the director of the Idaho Bureau of Animal Industry. The test chart for Bang's disease or the vaccination certificate must accompany the entry blank.

**Beef Cattle** — All breeding cattle over six months of age offered for exhibition purposes at the Eastern Idaho State Fair, including nurse cows — shall have passed an official negative agglutination blood test for Brucellosis (Bang's Disease) within sixty days of the date of the Fair. A certificate of Bang's vaccination by a deputy state veterinarian will be accepted up to thirty months of age, provided animal was vaccinated between the ages of six through eleven months and carries a tattoo in the ear for verification.

Tests must be approved by the director of the Idaho Bureau of Animal Industry. The test chart for Bang's disease or the vaccination certificate must accompany the entry blank.

All 4-H and F.F.A. white ribbon winners are not eligible to enter stock in contest with open entry class exhibitors.

### SWINE HEALTH RULES:

**Hog Cholera** — Swine must be immunized with either serum and virus not less than 21 days prior to the date of entering the fairgrounds or serum not more than 15 days prior to date of entering the fairgrounds, or crysa violet not less than 21 days prior

to date of entering the fairgrounds.

**Erysipelas** — Swine must be vaccinated with serum and culture not less than 21 days, or serum not more than 15 days prior to date of entering the fairgrounds.

**Brucellosis** — All hogs in breeding classes must be accompanied by a test chart showing negative test for swine brucellosis (Bang's) within 30 days of the first day of the fair.

**Rhinitis** — All swine herds must be inspected for rhinitis before entering the fairgrounds, and certified by the veterinarian as free from such disease.

**Leptospirosis** — All breeding swine must show negative to the blood test for Leptospirosis within 45 days of entering the fair, or be accompanied by a certificate showing semi-annual vaccination against it.

Placing and awarding of ribbons will be as follows: First, blue; second red; third, white; fourth, pink; Grand Champion, purple.

### SHEEP

1. Classes: Hampshire, Suffolk, whiteface, other standard breeds.  
2. Premium of \$3.00; \$2.00; \$1.00 and 50c.

## TAILOR MEAT CO.

Custom Butchering - Wholesale Meats  
"Willie the Wienie" — Taylor Maid

Phone 522-8592  
IDAHO FALLS, IDAHO

Idaho Falls' Only Home Owned Federally Graded Plant

Classes — Ewe lamb under 1 year of age; Ram lamb; 2. Yearling ewes; 3. Aged ewes; 4. Ram, 1 year and older. Grand Champion. Special Awards

**Health Rule** — All sheep require inspection by State Health Department for blue tongue, sore mouth, foot rot, sore sheath or other contagious disease. A health certificate from veterinarian will be accepted or contact with Vocational Agriculture Instructor or County Agent before day of fair.

### SWINE

1. Classes of Duroc, Yorkshire, Landrace, Spotted Poland, Poland, Hampshire and other standard breeds.  
2. Premiums of \$5, \$4, \$3, \$2 will be paid.

Base dates September 1 and March 1st.

Classes: 1. Spring Boars; 2. Yearling boars; 3. Aged boars; 4. Gilts under 6 months; 5. Gilts over 6 mos., but under 1 year; 6. Yearling gilts; 7. Aged sows; 8. Sow with litter; 9. Slaughter meat type hogs, pen of one and pen of three; 10. Produce of Dam, (four or more constitute an exhibit); 11. Grand Champion sow;

12. Grand Champion boar; 13. Grand champion meat type hog. Meat type division is limited to pigs not shown in breeding classes.

### DAIRY

1. Classes will consist of Holstein Jersey, Guernsey, Shorthorn, Ayrshire and Brown Swiss.  
2. Premiums \$5.00, \$3.00, \$2.00, and \$1.00.

### Classes — Female:

1. Calves up to 6 months.  
2. Heifers, 6 months to 1 year.  
3. Heifers, 1 year to 18 months.  
4. Heifers, 18 months to 2 years. (Not in Milk).  
5. Heifers 18 months to 2 years. (In Milk).  
6. Cows 2 to 3 years of age.  
7. Cows 4 years and older.  
8. Grand Champion.

### Bulls:

1. 6 months to 1 year.  
2. Over 1 year and under 2 years.  
3. Aged bulls, 2 years and older.  
4. Grand Champion.

Get of Sire — 1. Three animals of either sex, the get of one sire. At least one to be two years of age or older. Not more than one can be a bull. Sire must be named. Each exhibitor limited to one entry sired by same bull. Special awards.

Cache Valley Dairy Class.  
Added awards made for winners of offspring of C.V.D.A. Sires by the Cache Valley Breeders Assn.

American Breeders Service Awards will be made for winners of offspring by the A.B.S. in Dairy Class.

### Beef:

1. Standard breeds, Herefords, Angus and Shorthorn.  
2. Premiums \$5.00, \$3.00, \$2.00, and \$1.00.

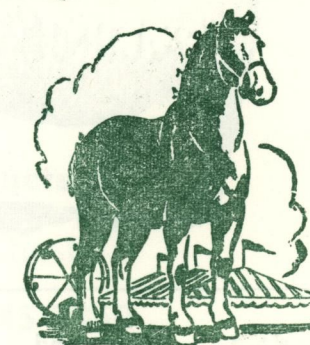
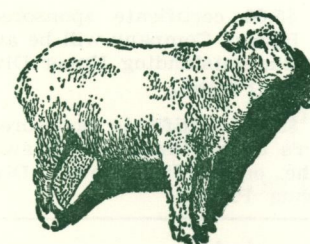
### 3. Females—

1. Heifer calf up to 6 months.  
2. Heifers from 6 mos to 1 year.  
3. Junior Yearling, 1 year to 18 months.  
4. Senior Yearling, 18 months to 2 years.  
5. Heifers 2 years and older.  
6. Grand Champion.

### 4. Bulls —

1. Junior Calf up to 6 months.  
2. Senior Calf 6 mos. to 1 year.  
3. Junior Yearling 1 year to 18 months.  
4. Senior Yearling, 18 months to 2 years.  
5. Aged Bulls, 2 years and older.  
6. Fat Steer class.  
7. Feeder Steer or Heifers.  
8. Grand Champion.  
Also Special Award.

Additional awards will be made by the American Shorthorn Assn., which will be a merit pin for the Champion Shorthorn Bull, also one for Champion Shorthorn Steer, also one for the Champion Shorthorn Heifer; also, the winners will receive a membership in this association gratis until reaching the age of 21.



Success to The County Fair

**BLOCKS**

Rigby Store

## NIELSEN MOTOR CO.

Full Line of  
John Deere Farm Equipment

SALES and SERVICE  
Authorized Dealer

— Your Patronage Appreciated —

Dodge Trucks and Cars

PHONE 745-6655

RIGBY, IDAHO

## AMERICAN BREEDERS SERVICE

"EVERY SIRE PROVED GREAT"

Progeny and Performance

Tested Bulls

Prompt, Efficient Service

Call STERLING KLINGLER, 745-7043

RIGBY, IDAHO

Ririe Grain & Feed  
Cooperative, Inc.

CUSTOM GRINDING  
AND MIXING  
GRAIN BOUGHT & SOLD

Clyde Dutson, Manager  
Phone 538-6712

Ririe, Idaho



# Girl's 4-H Department

JEFFERSON COUNTY — 1963

96 4-H Clubs 1108 4-H Members

Chairman — Carol McCandless

Extension Home Agent

All exhibits receiving "A" Awards are eligible to enter Eastern Idaho State Fair at Blackfoot.

## PROGRAM —

TUESDAY, August 27, 2:00 to 5:00 p.m. enter all girls 4-H Home Economics projects.

WEDNESDAY, August 28, 9:30 a.m. to 5:00 p.m. judging of girls 4-H projects.

THURSDAY, August 29, Judging of girls 4-H projects.

MOTTO: To Make The Best Better.

FRIDAY, August 30, - August 31.

4-H exhibits will remain on display

5 p.m. Saturday.



Requirement to be with each exhibit.

Completed record book and story.

Project exhibit requirements will be listed in A-18, Idaho 4-H Project Requirements.

4-H Home Economics Committee  
General Chairman - Mrs. Minnie Batt  
Foods Chairman - Mrs. Francis Freeman.

Clothing Chairman - Miss Carol Miller  
Health and Safety Chairman - Mrs. Nina Anderson  
Outdoor, Foods Freezing and Canning

Chairman - Miss Deon Lovell  
Room Improvement, Child Care and Junior Leadership Chairman - Mrs. VeOna Hayes

## SPECIAL AWARDS

### Home Economics Project

The following awards will be selected by a judge on the basis of quality of the garment 75 percent; and 25 percent on the record book.

A \$5.00 certificate sponsored by J. C. Penney Company will be awarded to the outstanding Upper Division Clothing Project.

A \$5.00 Certificate sponsored by Helen's Fabric Shop, will be awarded to the outstanding Lower Division Clothing Project.



Guns and

Ammunition



Tents

## Ron's Army Store

Work Clothing — Shoes

123 East Main Street

Rigby, Idaho

RONALD L. and JOY EGAN, Owners

Sleeping Bags

Supplies



Tackle

# Boy's 4-H Department

JEFFERSON COUNTY — 1963  
96 4-H Clubs — 1108 4-H Members

MOTTO: To Make the Best Better.

Chairman — Max A. Gardner  
County Extension Agent

Judging of all 4-H projects (except livestock) will begin at 9 a.m. Thursday, August 29.

## Judging 4-H Livestock

Exhibits will begin at 9:00 a.m. Friday, August 30. Boys Agricultural Demonstration Contest will be held Saturday, Aug. 31.

No 4-H member can receive premium money for exhibiting more than two divisions of any one project.

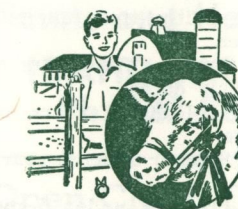
Health requirements for animals will be the same as for Open Class.

Animals shown in the fat stock class may not be shown in a breeding class and breeding animals may not be shown in the fat class.

Club members may enter the open

class division of the fair providing their animals received a blue or red ribbon in the 4-H Division.

4-H members with beef, dairy, sheep and swine projects are required to enter the showmanship contest. It will be divided into two sections — First Year Showmen and members with over one year of Showmanship.



Gold, Silver and Bronze ribbons will be awarded in fitting and showing.

## Agriculture

Livestock, General Chairman - Kenneth Anderson.

Other Projects, General Chairman - Herb Harrop.

Dairy - Gary Rhodes.

Beef - DeMonte Crystal, Charles Harris.

Sheep - Kenneth Anderson

Swine - George Skaar.

Horses - John Helm.

Poultry and Misc. - Gwen Hilker.

Forestry - Bert Harrop.

Rocks - Herb Harrop.

Garden - Nancy Nickerson.

Insects - Aletha Smith.

Tractor - Nina Anderson, Harvey Billman.

Woodwork - Keith Humphrey.

Photography - Clara Newby.

Come to  
the



## WALKER'S CAFE

Dining Room for Parties and Banquets

Food at its Best — Walker's are your hosts

Rigby, Idaho

Phone 745-9950

## CHARLES J. CLARK

Cleaning, Treating and Seed

Pillsbury's Best Feed and Salt

Custom Rolling and Mixing

Ririe, Idaho

Phone 538-6412



# F.F.A. Department

Merrill Banks and Rael Clark are in Charge.

In the F.F.A. Department exhibits at the Ririe Fair, Aug. 30 and August 31, each Future Farmer is limited to one exhibit in each class of crops and the entries must have been produced on the farm owned by the family.

County F.F.A. showing can be made at only one fair — either Ririe or Mud Lake for credit or prize. — Each Future Farmer is limited to two entries in each class of livestock.

The livestock exhibits must be owned by the Future Farmer or in which he is financially interested.

Health requirements for livestock in this department shall be the same as for open entry.

All entries to be graded according to breed standards and premiums to be paid on the basis of the awards of A B and C ratings both in crops and livestock.

## F.F.A. DAIRY CATTLE —

1. Aged cows, 3 years or over. Date of fair being the beginning date of age.
2. Cows over 2 and under 3 years.
3. Senior Heifers — Under 2 years, over 18 months.
4. Junior Heifers — Under 18 mos. over 12 months.
5. Heifers — Under 1 year, over 6 months.

6. Heifers — Under 6 months.
7. Bulls — Bulls any age, must be registered or eligible for registration.

## SWINE —

1. Sow — With litter, four or more pigs in litter.
2. Aged Sows — Two years of age or older. Fair dates.
3. Sows — Under 2 years, over 1 year of age.
4. Gilts (Senior) under 1 year, over 6 months.
5. Gilts (Junior) under 6 months.
6. Boars, Senior, over 1 year. Must be registered.
7. Boars, Junior, under 1 year and



over 6 months. Must be registered or eligible for registration.

8. Meat type market barrow or gilt. Cannot be shown in breeding classes.
9. Pen of three meat type market barrows or gilts. Same rule applies as above.
10. Junior boar; under six months of age.

**SHEEP — Purebred or Grade**  
Any recognized breed of sheep

1. Aged ewes over 2 years.

2. Yearling ewes over 1 under 2.
3. Aged rams over 1 year.
4. Ram lambs.
5. Ewe lambs.
6. Fat lambs - any breed or cross-breed.

## BEEF — Purebred or Grade

1. Feeder steers or heifers, any beef breed, or cross-breed (beef) type.
2. Fat Steer or heifers; any beef breed or cross-breed (beef) type.
3. Junior heifer calves; under 6 months of age.
4. Senior heifer calves; under 12 months, over 6 months of age.
5. Junior yearling heifers, under 18 months, over 12 months.
6. Senior yearling heifers, under 24 months, over 18 months of age.
7. Cows any beef breed, over 24 months of age.
8. Bulls, registered or eligible for registration in official association.

## CROPS —

Grains and legumes (threshed)

1. Wheat, white, any variety, ½ peck.
2. Wheat, red, any variety ½ peck.
3. Barley, any variety, ½ peck.
4. Oats, any variety, ½ peck.
5. Peas, any variety, 5 lbs.
6. Beans, any variety, 5 lbs.
7. Alfalfa, 5 lbs.
8. Red Clover, 5 lbs.

Grains and Legumes (Sheaves)

1. Sheaf of wheat, any variety.

## HART PONTIAC-CADILLAC

CECIL E. HART (Owner)

A Quality Car and a Quality Dealer go Together

IDAHO FALLS, IDAHO

Sales Representative: AB. WHEELER

"Your Partner in Better Living"



— Yards At —

RIGBY - MENAN - ROBERTS - RIRIE

## SNAKE RIVER EQUIPMENT CO.

International Tractors and Trucks  
Farm Equipment - Parts and Service  
Pumps and Irrigation Systems  
Paints and Hardware



RIRIE  
Pho. 538-6231

IDAHO FALLS  
Ph. 523-0800

TERRETON  
Ph. MO 3-5111

2. Sheaf of barley, any variety.
3. Sheaf of oats, any variety.
4. Sheaf of Alfalfa.
5. Sheaf of red clover.

All grain sheaves must have a cross section diameter through butt with a minimum of 2½ inches.

## Row Crops —

1. Sugar beets, 5 for entry. A special prize for largest beet.
2. Potatoes, Seed, must be grown for certification. 15 tubers.
3. Potatoes, Netted Gems (Commercial) 10 tubers.

## VEGETABLES —

1. Table beets, 6; 2. Carrots, half long, 5; 3. Carrots, long, 5; 4. Onions, white, 5; 6. Cabbage 2 heads; 7. Cauliflower, 2 heads; 8. Sweet Corn, white, 5 ears; 9. Sweet corn, yellow, 5 ears; 10. Cucumbers 4; 11. Lettuce, 3 heads; 12. Peppers, 5; 13. Pumpkin, 2; 14. Squash, Hubbard 2; 15. Squash banana 2; 16. Tomatoes 5; 17. Beans, 20 pods; 18. Turnips, 5.

## Fruits —

1. Apples, any variety, 5.
2. Pears, any variety, 5.
3. Plums, any variety, 10.
4. Peaches, any variety, 5.
5. Crab apples, 5.
- A "plate" of berries is to consist of 15 berries.
6. Strawberries, 1 plate.
7. Raspberries, 1 plate.
8. Other berries, 1 plate.

## Open Class, Crops And Gardens

Exhibits must be entered at the Fair Grounds Exhibit Building by 9 p.m., Thursday, August 29th and remain until 5 p.m. Saturday, Aug. 31. Prizes and ribbons for winning exhibit will be as follows: First, blue \$1.00; Second, red .75c; Third, white .35c.

**FRUIT AND GARDEN —**  
Mr. and Mrs. Don Mulberry, Chairmen  
Exhibit requirements are as follows:

Beets, table, 5; Carrots 6; Onions 5; Parsnips 5; Turnips 5; Cabbage 2 heads; Cauliflower 2 heads; Sweet Corn 5 ears; Pop Corn 5 ears; Cucumbers 6; Egg Plants 3; Lettuce 3 heads; Cantaloupes 3; Watermelon 2; Peppers 5; Pumpkin 2; Squash, Hubbard 2; Squash, Banana 2; Tomatoes 5; String Beans 2 lbs.; Duchess Apples 6; Wealthy Apples 5; McIntosh Apples 5; Crab Apples 5; Peaches 5; Pears 6; Plums 10.

**POTATOES —**  
Sach Mikami Chairman.

Russet Potatoes, commercial, 10;

Early Red Potatoes, commercial, 10; Early White Potatoes, commercial, 10; Certified Seed Potatoes, 15.

Best Commercial Potato Exhibit,



Special Trophy Award by Lewisville Produce Co.

## SUGAR BEETS —

Keith Ellis, Chairman.

Sugar Beets, 5. Mangle Beets, 5.

## SEED PEAS —

Earl Renard, Chairman.

Large Podded wrinkled Peas 5 lbs.

Small Podded wrinkled Peas 5 lbs.

Alaskas 5 lbs.; Austrian 5 lbs.

## SMALL GRAIN EXHIBIT —

Charles Clark, Chairman.

A trophy will be awarded best exhibit by Pillsbury Mills.

Exhibit to contain ½ peck in each seamless sack.

1. Any variety hard, red winter wheat.

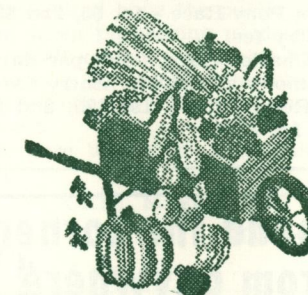
2. Any variety hard, red spring wheat.

3. Any variety soft white wheat.

4. Any variety white oats.

5. Any variety feed barley.

6. Any variety of brewing barley.



## GENERAL MILLS, INC.

### Sperry Division

Congratulations to the 30th  
Jefferson County Fair

DAN DAVIS, Mgr.

RIRIE, IDAHO

PHONE 538-6612



A Farmers Co-Op Since 1923

Feed - Seed - Farm Hardware

North Yellowstone Highway

Phone 522-4727

Idaho Falls, Idaho



## REED HARDWARE & IMPLEMENT CO.

— DISTRIBUTORS —

Sprinkler Irrigation Equipment - David Brown Tractors

Peerless; Roller Mills - Sumo Submersible Pumps

Phone 523-1046 — North Highway — Idaho Falls, Idaho

## RACING PROGRAM

The racing program will officially open at the arena Friday, August 30, 2:00 p.m. with drill of the Jefferson County Posse followed by the races. Race program will start sharply at 1:00 p.m. ending at 3:00 p.m., followed by the National Guard 116th Engineer Battalion of 350 men drill of review and award formation, consisting of three letter companies and one Headquarters Co.

Racing program including roping events will be in charge of Keith Johnson and Richard Johnson, and all contestants are required to sign-up the first day for all events.

Only the contestants and committee members are allowed in the racing arena during the events and every contestant must sign up before the opening. One registry will be enough for both days, and positively no one can contest in any event unless signed up prior to opening.

The winners, both 1st and 2nd, of each fast jockey race on each day will not be permitted to enter their horses in Western Style saddle race.

Racing schedule for Friday, August 30th and Saturday, August 31, is as follows:

Friday races start at 2:00 p.m.; and, Saturday races start at 1:00 p.m.

Note: Where entry fee is charged, it will be added to purse for that race.

1. 1/8 Mile Fast Jockey Race, 1st \$25, 2nd \$15. Entry Fee \$5.00.

2. Girl's Pony Race, 1st \$5.00, 2nd \$3.50 (no entry fee)

3. Western Style Saddle Horse Race 1st \$10; 2nd \$5.00. Entry fee \$5.00.

4. 1/4 Mi. Fast Jockey Race- 1st \$25; 2nd \$15. Entry Fee \$5.00.

5. Boy's and Girl's Shetland Pony Race - 1st \$5; 2nd \$3.50 (No entry fee)

6. Potato Race, 1st \$5.00, 2nd \$3.50 (no entry fee).

7. 3/8 Mile Fast Jockey Race - 1st \$25, 2nd \$15. Entry fee \$5.00.

8. 2nd Western Style Saddle Horse Race - 1st \$10, 2nd \$5.00. Entry fee \$5

9. Musical Chair Race - 1st \$5, 2nd \$3.50. (no entry fee).

10. 1/2 Mile Fast Jockey Race - 1st \$25.00, 2nd \$15. Entry fee \$5.00.

Boy's Pony Race - 1st \$5, 2nd \$3.50 (no entry fee).

12. Chariot Race - \$80 per day to split among all drivers. Entry fee \$5.

13. Relay Race - 1st \$25, 2nd \$15. Entry fee \$5.00.

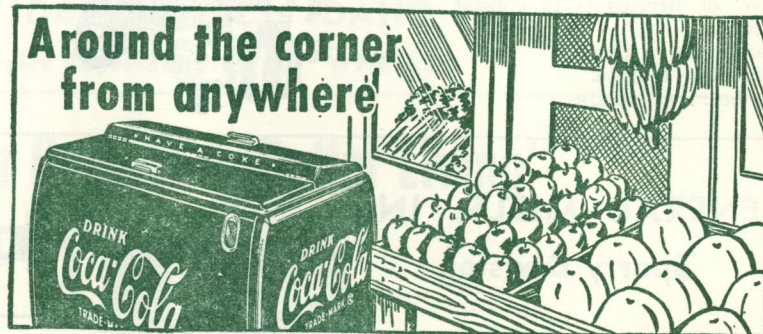
## HEISE HOT SPRINGS



OPEN 10 A.M. to 10 P.M.  
DAILY EXCEPT MONDAY

- \* Snack Bar
- \* Cold Drinks and Beer
- \* Accommodations for Private Parties
- \* Hot Mineral Bathing
- \* Open All Year

Phone 538-7312



COCA-COLA BOTTLING CO.

Ph. 522-4101

Idaho Falls

## RAY'S CHEVROLET COMPANY

It's Easy to Trade at Ray's

— 24 HOUR WRECKER SERVICE —

HOME OF "OK" USED CARS

See Us — Before You Buy

Phone 745-6634

152 East Main

Rigby, Idaho



## CACHE VALLEY BREEDER'S ASSN.

Farmers Co-Op

"PROVEN"

SERVICE AND SIRES

Phone 754-4625

RIGBY EXCHANGE

## ECKERSELL

## FUNERAL HOME

Rigby, Idaho

Phone 745-6604

## Appreciation

The Jefferson County Fair Board wishes to express sincere appreciation to all who have contributed in any manner toward the success of the Thirtieth Annual County Fair

Please drive slow to the Fair — WITHOUT WORRY — DON'T HURRY — to and from the two-day event and the Night shows, Friday and Saturday at 7:00 p.m., August 30-31.

We make recognition to the Kraft Foods Co., Idaho First Nat'l. Bank, Rigby; Utah Power and Light Co., Rigby; The Post-Register; The Rigby Star; Jefferson County Posse; VFW Post 1004, Rigby; Ririe Farm Bureau; Sperry Elevators; Ririe Chamber of Commerce; the Ririe Lions Club; the 1st and 2nd L.D.S. Wards of Ririe and Shelton Ward; and the Presbyterian Church officers for their generous cooperation.

We are very grateful to all our advertisers and hope the public will see them when purchasing needs in their line as all are very reputable business firms and do much to maintain our local standards. They deserve your support.

Be sure to see the Centennial Exhibit.

CARL M. SHANER,  
Manager.

## RINK-O-FUN

Roller skating keeps the Young and Old in Condition

Open Fri. and Sat. Nights

Special Attention Given  
Private Engagements

BILL WHITE, Manager  
Main Street Ririe, Idaho

## MORGAN'S RIRIE MOTEL AND MARKET

Groceries - Meats - Produce

Open Sundays & Holidays

and Daily until 11 p.m.

Ririe, Ida. Ph. 538-6031

H. C. JOHNSON  
WHOLESALE  
Gasoline

Motor Oils  
and  
Fuel Oils

Phone 538-6864

## PHILLIPS 66

Your Dealer and Agent

RIRIE, IDAHO

ARCHIE'S  
(66) SERVICE

RETAIL

Lubrication  
Washing  
and Accessories

Phone 538-9908



# RIRIE FARM EQUIPMENT SERVICE

HERB POORE, Manager

Blacksmithing – Welding  
General Repair

You Bust 'em – We Fix 'em

PHONE 538-7371 ----- RIRIE, IDAHO

## RIRIE SALES AGENCY

R.C.A. TELEVISION (Black and White, and Color)  
HOTPOINT APPLIANCES – FURNITURE  
AMERICAN OIL DISTRIBUTOR

PHONE 538-6311

RIRIE, IDAHO

### Special Awards And Donors

1. Champion Beef Bull, Menan Co-op, Trophy.
2. Champion Female Beef, Ririe Chamber of Commerce, Trophy.
3. Champion Dairy Bull, Hunter Chemical and Farm Supply, Trophy.
4. Champion Dairy Cow, Rowland Bros. Dairy, Pocatello, Trophy.
5. Champion Ram, Rigby Chamber of Commerce, Trophy.
6. Champion Ewe, Jefferson County Farm Bureau, Trophy.
7. Champion Boar, Ririe Farm Bureau, Trophy.
8. Champion Female Swine, Ririe Merc., Trophy.
9. Outstanding Pleasure Saddle Horse, Pastime Club, Ririe, Trophy.
10. Outstanding Saddle Work Horse, Gateway Service, Ririe, Trophy.
11. Best Potato Exhibit, Lewisville Produce Co., Lewisville, Trophy.
12. Best grain exhibit, Pillsbury Co., Trophy.
13. Outstanding Art Exhibit, Ririe Lions Club, Trophy.
14. Outstanding Junior Saddle Horse, Dansie Jewelers, Rigby, Trophy.
15. 4-H Dairy Fitting and Showing Kraft Foods, halter, 1st yr. Showman.
16. 4-H Dairy Fitting and Showing, Challenge Creameries, halter, Advanced Showman.
17. F.F.A. Dairy Fitting and Showing, American Breeders Serv., halter.
18. 4-H Beef Fitting and Showing, Jefferson Co-Op Supply, Rigby, halter.
19. F.F.A. Beef Fitting & Showing Valley Builder's Sup., Rigby, halter.
20. 4-H Sheep Fitting and Showing Jefferson County Sheep and Wool Growers Assn., Shears.
21. F.F.A. Sheep Fitting & Showing, Jefferson County Sheep and Wool Growers Assn., Shears.
22. 4-H Swine Fitting and Showing, Idaho First Nat'l. Bank, Rigby, Cane.
23. F.F.A. Swine Fitting and Showing, Idaho 1st Nat'l. Bank, Rigby, Cane.
24. 1st Place 4-H Talent Contest, Rigby Star, Trophy.
25. 2nd Place, 4-H Talent Contest, Rigby Star, Trophy.
26. 3rd Place 4-H Talent Contest, Bestway Building Center, Trophy.
- 26a. Grand Champion Beef, Idaho Cattlemen's Assn., plaque and honorary membership for one year.
27. Outstanding F.F.A. Project, Jefferson County Fair Board, trophy.
28. Outstanding 1st, 2nd, 3rd, 4th places all a trophy by the Jefferson County Fair Board.
29. Six Trophies additional will be awarded to the Champion Buckaroo Riders at the Saturday night show, by Jefferson County Fair Board.



## THE PASTIME CLUB

PARTY HEADQUARTERS  
FISHING SUPPLIES – PACKAGE ICE  
BEER – COLD DRINKS

Ririe, Idaho

Ronald E. Berry, Mgr.