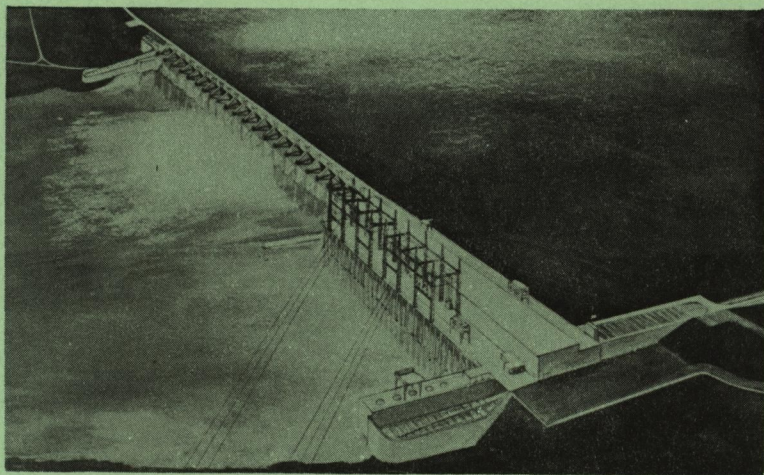


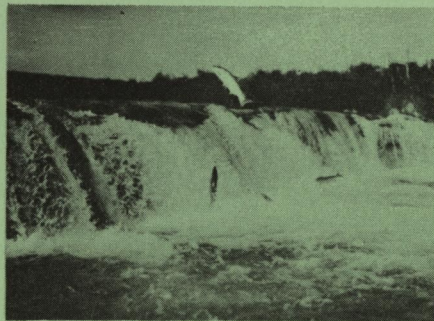
PRIEST RAPIDS DEVELOPMENT

FISH AND RECREATION



Under Construction by
**PUBLIC UTILITY DISTRICT
OF GRANT COUNTY
EPHRATA, WASH.**

THE SALMON AND THE STEELHEAD TROUT



SALMON JUMPING FALLS

The Columbia River is inhabited by many kinds (species) of fish, some of which are prized highly by the commercial and sports fishermen. The two most important of these are the salmon and the steelhead trout.

The salmon and steelhead collectively are known as anadromous fish, since they spend part of their lives in the streams and part in the ocean. The young fish hatch from the eggs deposited by their parents in the gravel beds of the streams. After hatching they spend from one to two years in the fresh

water and then migrate to the ocean for a period of marine residence of two to four years. While in the ocean they make over 95 percent of their entire growth and upon attaining maturity they, like their parents, return to spawn in the streams where they originated. The adult salmon invariably die after they spawn, but the steelhead live to spawn again and may make as many as three trips to and from the ocean.

The salmon that frequent the waters of the upper Columbia River, along with the steelhead trout, are the chinooks and bluebacks. The chinooks are the monarchs of the salmon family and weigh from 10 to 75 pounds when mature. They are often called King Salmon because of their gameness and size. The bluebacks are the smallest of the family and seldom attain a weight of greater than five pounds. The steelhead are intermediate in size, weighing from five to twenty pounds, and are one of the gamest fish in the streams of the western slope. A variety of these fish known as Kamloops have been caught in the lakes of the Northwest weighing up to 50 pounds.

The Columbia River chinooks feed in the off-shore waters along the coast from northern California to southeastern Alaska. They are caught by commercial and sports fishermen throughout this entire range. They are also caught in the river by the nets of the commercial fishermen and the tackle of the sports fishermen.

The bluebacks are caught mainly in the river by the nets of the commercial fishermen.

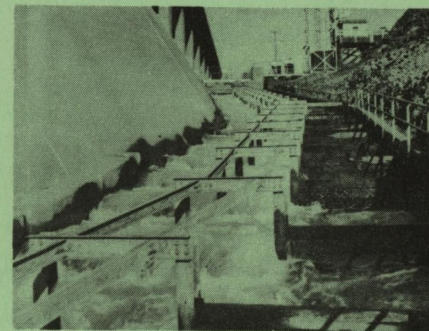


MATING SALMON ON NEST

The steelhead are caught both in salt and freshwater. In the State of Washington they are limited to the sports fishery only and are not permitted to be sold commercially.

In view of the extensive fishing for the salmon and steelhead by both commercial and sports fishermen there is good reason why the State and Federal fishery conservation agencies are vitally interested in protecting these fish during their spawning migration.

FISHWAYS IN THE DAM



FISH LADDER IN ACTION

The Public Utility District of Grant County is building the Priest Rapids Dam to include provisions for the construction and operation of fishways in the dam and provide for the safe passage of the salmon and steelhead on their annual upstream spawning migrations. These fishways are being built according to the recommendations of the conservation agencies and will incorporate the latest design for the efficient upstream passage of the fish.

Material and costs incorporated in the	
Fishways:	
Concrete - Cubic Yards	159,200
Reinforcing Steel, gates and weirs - tons	6,190
Water Pumps, 5 units at 300 Horse Power each	1,500
Construction Cost	\$10,000,000
Operation and maintenance - annual	\$ 150,000

RECREATIONAL POTENTIAL OF THE RESERVOIR ABOVE PRIEST RAPIDS DAM



PRIEST RAPIDS ABOVE DAM

When the spillway gates are closed in Priest Rapids Dam a large reservoir will form above it. This reservoir, or pool, will extend 18 miles upstream and average one-half mile in width. The level of the pool will not vary more than five feet throughout most of the year and the current through it, except during the spring floods, will be negligible. Hence, the natural conditions in the pool should, within a short period of adjustment, approximate those of a large lake.



(Courtesy Dale Wells)

The District has provided for the expenditure of \$20,000 to create a master plan for the development of recreational areas along the shores of the pool.

The small fluctuation in the level of the pool and its slow moving waters will provide favorable conditions for boating, water skiing and swimming. The boat clubs in the neighboring towns are already encouraging the Public Utility District to have the recreational potential of the pool developed at the earliest opportunity.

A RENDEZVOUS OF THE ELLENSBURG BOAT CLUB ON THE COLUMBIA RIVER

C
H
I
N
O
O
K

S
A
L
M
O
N

20 pounder

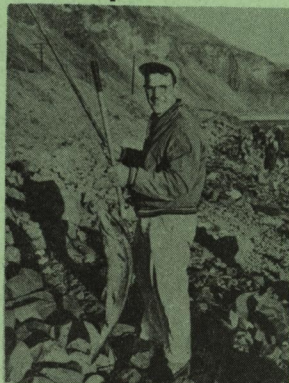


(Courtesy Laura Ordway)

C
H
I
N
O
O
K

S
A
L
M
O
N

12 pounder



(Courtesy Cliff Dawson)

Plans are being made to improve the game fish populations in the pool and to make sports fishing one of the attractive features. The salmon and steelhead will pass through the pool on their annual upstream migration and will be more available to the fishermen than at present. There is a possibility that a species of game fish may be introduced into the pool that will become resident there and provide for attractive sports fishing.

In a short time the pool above Priest Rapids Dam will become a mecca for those who enjoy recreation in and along the shores of clear and refreshing waters.