

Welcome Traveler..



CENTRAL CASCADE VACATION LAND

Highways No. 5 and U.S. 410



**Visit Mt. Rainier and the Beautiful
Cascade Mountains**

KEEP WASHINGTON GREEN

Locations and Descriptions

BUMPING LAKE AND RIVER AREA

A paved road takes you to a land of beauty and fun. Plants of fish are spaced, making good stream and lake fishing for the fisherman. For the hiker, mushroom, rock and big game hunters there are well marked scenic trails. A warm welcome awaits you by friendly people.

1. Bumping Lake Resort

Located 12 miles off Highway 410. Quiet, beautiful forest retreat, overlooking Bumping Lake. Unsurpassed view of mountains. A paradise for stream and lake fishing, deer, elk and bear hunting. Nearest accommodations to Wilderness Area. No traffic. Completely furnished large and small lodges. Electricity, indoor plumbing, central showers. Moderate rates. Mac and Dorothy McIntyre, Goose Prairie, Wash.

2. Goose Prairie Post Office and Resort

Located 8 miles up Bumping River from American River Resort off Highway 410. A quiet, restful spot. Lake and stream fishing, also deer and elk hunting. Cabins, linen optional. Central showers, groceries, beverages, fishing tackle, souvenirs, gas and oil. Bob and Marie Richards, Goose Prairie, Washington.

9. Pletcher's Mountainview Resort

Located 58 miles from Yakima, 8 miles from American River Resort and Highway 410 on the Bumping Lake road. Modern cabins with bedding and dishes. Lunch room, also camper's supplies. Lake and stream fishing. Big game hunting. A real place for hiking or just relaxing. Write for reservations. Hank and June Pletcher, Goose Prairie, Washington.

CHINOOK PASS—HIGHWAY 410—NACHES

This highway takes you through a land of beauty and sunshine. A mountain lover's paradise. With good fishing, excellent deer and elk hunting. With lots of friendly people to assist you with your needs.

3. American River Resort

Ninety-eight miles Southwest from Seattle, 1962 World's Fair City, 48 miles west of Yakima on Highway 410—at the junction of the American and Bumping Rivers. Rustic and modern cabins, some with kitchens. Lodge has restaurant, souvenirs, sundries, beverages, groceries, huge fireplace—also trailer space, gas and oil. For reservations, write Bob and Marie Richards, Star Route, Naches, Washington.

4. Whistlin' Jack Lodge

Highway 410, Cliffdell, 38 miles west of Yakima, 27 miles from Chinook Pass. Half mile of beautiful Naches River front. Tourists', sportsmen's, mountain lovers' paradise. Fishing, big game hunting, hiking. Restaurant, gift shop, gasoline. Brand new modern motel, also modern cottages with fireplaces. Write for rates and information. Bill and Helen Williams, Star Route, Naches, Washington.

32. Pine Cone

Enjoy our mountains! Fishing and hunting (in season with gun, year 'round with camera). Let us serve you in our dining room, grocery store and Shell Station—or just stop to say hello! 36 miles west of Yakima, 29 miles from Summit on Highway 410. Frank and Ethel Johnson, Naches, Wash.

5. Pond Texaco Service

Texaco gas, beverages, ice, meat, groceries, dining room. Fishing and hunting—quiet and restful. Thirty-five miles west of Yakima, 35 miles east of Chinook Pass Summit. George and Ruby Ennis, Box 89, Star Route, Naches, Wash.

6. Naches Ranger Station

Thirty-six miles from Yakima, 34 miles from Chinook Pass Summit on Highway 410. Spike Armstrong, Ranger-in-charge, Star Route, Naches, Washington.

7. Little Beaver Lodge

Thirty-four miles west of Yakima on Highway 410 on Naches River. Good hunting and fishing all around our place. Short scenic trips to fine camping spots on nearby streams. Our clean cabins are equipped for cooking. Have refrigeration. Excellent beds and bedding. We still feature reasonable rates. Call OL 8-2989 or write Star Route, Naches, Wash., Box 88, "Mom" and "Pop" Dunlap.

34. Squaw Rock Resort

Chevron station. 31 miles west of Yakima on Naches River. Good fishing and excellent deer and elk hunting. Clean cabins that are equipped for cooking, also space for campers and trailers. Picnic and grocery supplies, cold beverages. Jim and Vivian Andrews, Star Route, Naches, Washington.

8. Eagle Rock Store

One-stop Mobil Service on Highway 410. 25 miles west of Yakima. Headquarters of elk and deer hunters, fishermen and tourists. Furnished cabins, modern trailer space, lunch room, groceries, automotive and sports supplies. Lois and Herman Lyon. Phone OLive 8-2905, or write, Star Route, Naches, Washington.

10. White Pass Motel

Just out of Naches on Highway 410. Situated just far enough off the highway to insure quiet, restful sleep, undisturbed by car or truck noise. You may picnic on our spacious lawn or enjoy delicious food from nearby restaurants, just a short drive to Washington's Pride—Mt. Rainier. Mr. and Mrs. L. Van Ess, Prop.

11. Hiway Cafe & Jim's Richfield Station

One-quarter mile west of Naches on Highway 410, delicious meals, cold beverages, party ice, sandwiches and meals to go, dining room and good service. Have your car serviced while you eat. Open 5:00 a. m. to 2:00 a. m. through week, 24 hours weekends. James and Bertha Dallas, Naches, Washington, OLive 3-2503.

12. Johnson's Shell Service

Complete line of automotive service and Ford Agency. Harold M. Johnson, Prop., Naches, Washington, OLive 3-2209.

13. Shell Oil Co.

Local distributor, Gordon Manring, Naches, Washington, OLive 3-2620.

14. Moore Bros. Furniture & Building Supplies, Inc.

Furniture, plumbing and wiring. Also complete line of sporting goods plus hunting and fishing licenses. Phone OL 3-2444. Erman Evans, Mgr., Naches, Washington, Box 68.

15. Union Oil Co.

Distributor, 920 N. 6th Ave., CH 8-0760, Yakima, Washington. Union Oil Co., Naches, Washington, OLive 3-2632.

16. Standard Oil Co.

Harry Hays, Local Distributor, Naches, Washington. Phone OLive 3-2586.

17. Kendall's Food Specialists

Your pickle peddler, distributing cookies, potato chips, and restaurant supplies. Yakima, Washington, 305 N. 25th Ave.

WHITE PASS - HIGHWAY 5 - RIMROCK LAKE

East Gate Entrance to White Pass, Stevens Canyon and Mt. Rainier

One of the most scenic highways in the State of Washington. (Open the year around), has plenty of camp grounds and nice modern and up-to-date motels and restaurants to serve you. Good stream and lake fishing, plus excellent deer and elk hunting. (With White Pass Ski Area) at the Summit, operating two chair lift, plus Pomalift and rope tows. We all welcome you to our beautiful area.

18. Oak Creek Game Range

Seventy-five-thousand-acre wild game farm operated by the State with George Schrindel as manager. Star Route, Naches, Washington.

19. Trout Lodge Chevron Station

Full line of gas and oil and tire service, also full line of fishing and hunting supplies—plus hunting and fishing licenses. Rocky and Daisy Mullen, Star Route, Naches, Washington.

20. Trout Lodge Resort

On Tieton River, 7 miles below Rimrock Lake, 20 miles to White Pass Ski Area. Large pine paneled motel units and rustic cabins. Some with kitchens, trailer hookups, dining room and cafe, gift and souvenir shop. New banquet room with dancing. Ralph and Barbra Van Weller, Star Route, Naches. Phone Yakima Rimrock 672-2211.

21. East Gate Motel, W.M.A. Approved

Seven miles below Rimrock Lake, 20 miles east of White Pass Chair Lift. Five river cottages and motel, 10 units in all, modern, with cooking facilities, 2 with fireplaces. Modern trailer space, garage, auto repair. Day, weekly or monthly rates. Tom and Kay Eberhard, Star Route, Naches, Wash. Phone Yakima, Rimrock 672-2213.

22. Game Ridge Motel, A.A.A. Approved

On the Tieton River. The beauty spot of White Pass, located 20 miles east of White Pass Summit. 20 all-electric and modern units. With or without cooking. At a surprising low rate. Good hunting and fishing. Excellent cafe on premises. Mr. and Mrs. W. A. Johnson, Star Route, Naches, Washington. Phone Rimrock 672-2212.

23. Sportsmen's Pancake and Steak House Cafe and Store

We invite you to mountain dining and hospitality on the beautiful White Pass Highway. Specializing in Swedish Pancakes with lingonberries, and steaks. Ole and Gisela Hansen, owners. Phone Rimrock 672-2219.

43. Halbrook Marine Service

Boats and Evinrude motors, sales and service. Cecil Halbrook, Star Route, Naches, Washington. Phone Rimrock 672-2210.

24. Tieton Ranger Station

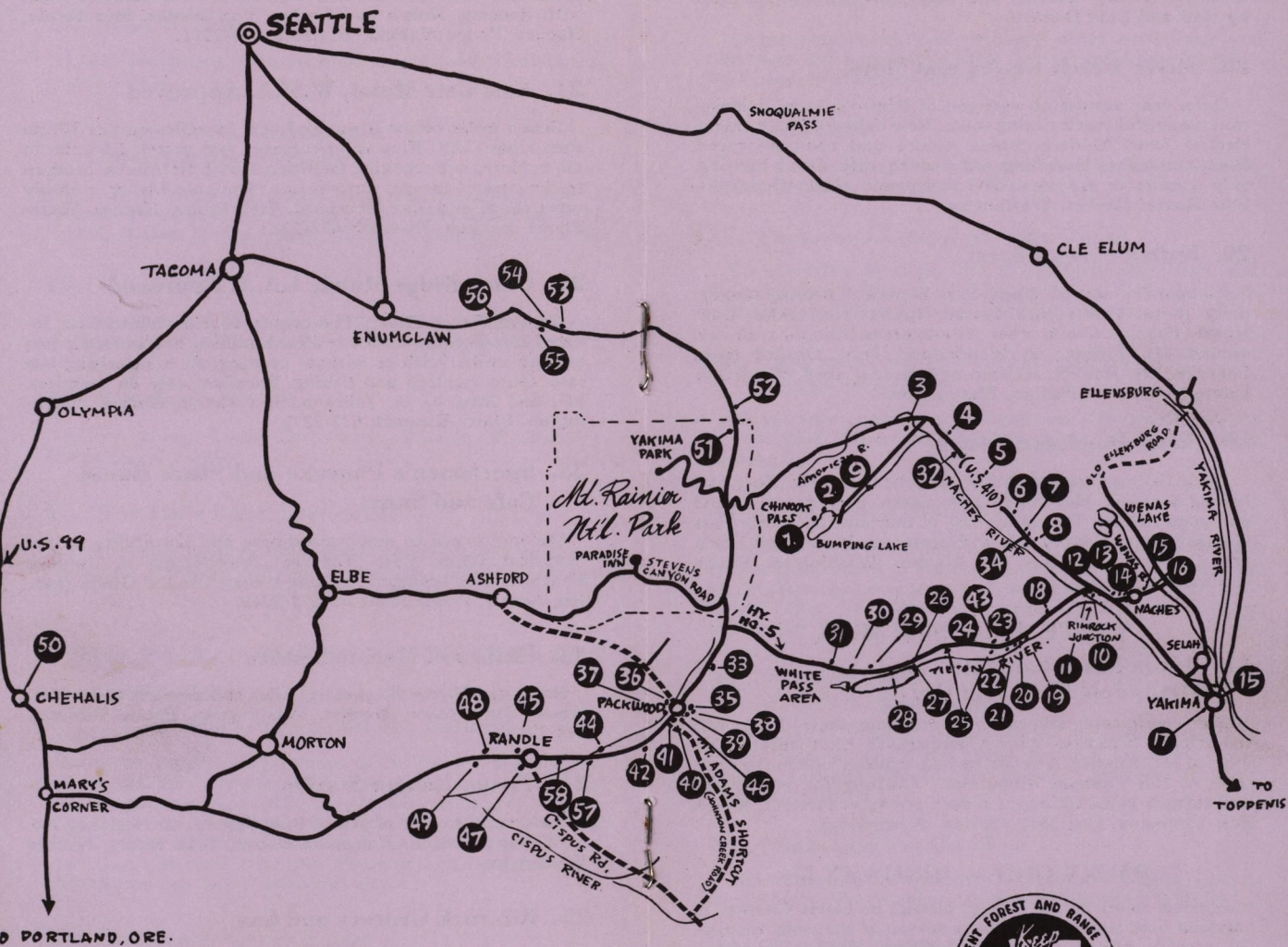
Sixteen miles east of White Pass Summit on Highway No. 5. Wayne Maxwell, Ranger-in-charge, Star Route, Naches, Washington.

25. Rimrock Grocery and Gas

At the east end of Rimrock Lake. A complete line of groceries, picnic supplies, cold drinks and ice cream. Shell Service Station—also fishing supplies. Come as you are. Glenn and Elizabeth Cooley, Rimrock 672-2222.

26. Chris' Cove Resort

Lower end of Rimrock Lake, on White Pass. Boats and moorage, raft fishing, water skiing, restaurant, modern cabins, trailer park and picnic area. Open year around. Elder and Anne Leinan, Star Route, Naches, Washington.



27. Rimrock Landing Resort

Located on White Pass. Dining room overlooking Rimrock Lake and surrounding country. Cabins with central rest-rooms and showers, modern cottage with fireplace. Boat moorage, fishing, hunting and skiing. Owned and operated by Gail and Lula Dennett.

28. Silver Beach Resort and Motel

Open year around at west end of Rimrock Lake. Restaurant, beautiful rustic dining room. New deluxe 20-unit motel, electric heat. Modern cabins, trailer and camping space. Boats, moorage, launching and fishing raft. Good hunting, only 8 miles to ski area. Don and Jessie Mark, Operators, Star Route, Naches, Washington.

29. Indian Creek Corral

Eight miles east of White Pass Summit. Offering hourly-daily rental saddle-pack horses; special trail rides Goat Rocks, Cascade Crest, other remote areas. Annual trail ride around Mt. Rainier on Wonderland Trail. Guided trips, Paradise, Mt. Rainier. Hunters and game packed. Write Star Route (Rimrock), Naches, Washington.

30. Jones Dog Lake Resort

Dock fishing, boat launching and boat rentals. Boat and fishing supplies. Hot coffee and snacks. Free camp ground and good fishing. Two miles east of Summitt on White Pass Highway. It's a family affair. Proprietors, Merlin and Hilda Jones, Star Route, Box 187, Naches, Washington. Phone Rimrock 672-2214.

WHITE PASS SKI AREA

31. White Pass Chair Lift

(Daily July thru Labor Day)

Ride comfortably and safely on mile-long chair lift, up into the Alpine Meadows with Washington's most spectacular view of Mt. Rainier. A never-to-be-forgotten ride to the very crest of the Cascade Mountains. Thrilling for youngsters and oldsters alike. Skiing in winter, seeing in summer. White Pass Company, Box 354, Yakima, Washington.

PACKWOOD — HIGHWAY 5

Packwood, heart of the fishing district of Lewis County. A vacation land unequalled for any season of the year. Beautiful scenery all in its natural setting. Rivers, mountain streams, mountain lakes and trails for riding or pack trips into the mountains. Southwest entrance to White Pass ski area on Highway 5, southwest entrance to scenic Mt. Rainier National Park. Also several State Parks for your enjoyment. Plenty of eating and lodging facilities available.

33. Coal Creek Resort

Four miles east of Packwood and 16 miles west of White Pass Chair Lift. Serving breakfast, lunch and dinners. Cabins, gas and oil. Fred's Coal Creek Resort.

35. Packwood Ranger Station

In the heart of Packwood on Highway No. 5. Ralph K. Coon, Ranger-in-charge.

36. Blue Spruce Cafe

Specializing in steak dinners and other good foods and beverages. Let's get acquainted. Dewey and Lucy Jennings, Packwood, Washington. Phone 494-5365.

46. Club Cafe

Just good food, and we bake our own pies. Sadie and Bill. Phone 494-5125, Packwood, Washington.

37. Packwood Cafe & Trophy Room

We specialize in steaks and chicken and other fine food. Your favorite drinks in our Trophy Room. Open 6:00 a. m. to 2:00 a. m. Bill and Helen Mociulski, owners.

38. Packwood Hotel — Centrally Located Phone 494-5431

Dormitory-museum, antique and rock shop and Packwood Trailer Park. Phone 494-5145. Sherman and Jessie Combs, owners.

39. Shady Nook Stables

Guided trips to mountain areas. With saddle and pack horses at Yakima and Packwood, also horses at Soda Springs off Highway 5 during summer from June to December. Andy Brown, Box 1465, Yakima, or Box 572, Packwood. Phone GLencourt 7-8343, Yakima.

40. Tatoosh Motel A.M.H.A. Approved

All electric, modern cabins, electric heat and cooking facilities. Simmons king-sized beds. In the heart of the fishing district. Mr. and Mrs. Rolland Brown, Packwood, Washington. Phone 494-5321.

41. Packwood Lumber Co.

Manufacturers of West Coast Lumber Products. Located in the heart of the lumber country at Packwood, Washington.

42. K's Cafe and Drive Inn

Stop 2 miles west of Packwood on White Pass Highway No. 5. Table service for breakfast, lunch and dinner. Hamburgers, cold drinks, home-made doughnuts and pies. Estel, Rita and Alice Blakley, owners. Phone 494-5237.

44. L. and M. Union Service

1 mile east of Randle, Wash. Specializing in front end work, brake service, tune up, U-Joints and mufflers. John Looney and Wink Morris, Randle, Wash. Phone 497-5696.

57. Randle Richfield Service

"Service When You Need It." Gas, oil, diesel and tire service, also industrial supplies. 1 mile east of Randle on Highway No. 5. Phone 497-5765, Box 718, Randle, Wash.

45. Randle Ranger Station

Located one-quarter mile west of Randle on Old Highway. Harold W. Coates, Ranger-in-charge.

47. Mt. Adams Cafe

Breakfast, lunch and dinner, table and counter service, steaks, chops and seafood. Soft drinks and ice cream. Elizabeth Morris and Irene Mustain. Phone Randle 497-5556.

58. Double R Bar Ranch

Mineral baths used in treatment of arthritis, rheumatism, skin afflictions, internal disorders. Water to go in your jugs. Cabins available. Four miles south of Randle on Cispus Road. Dale A. Reed, Cispus Route, Randle, Washington.

48. Silver Spruce Motel

Gateway to Mt. Adams Recreation Area. New, clean, modern cabins with electric heat. Center of Randle, Washington. Store, restaurant, postoffice, etc., all within one block of motel. Monte and Anne Oliver, Managers. Phone 497-5346.

49. Mt. Adams Motel

One mile west on Highway 5, P. O. Box 848. Nicely decorated units set apart on spacious, developed grounds. All have shower baths. Free TV, refrigeration and individually controlled electric or vented heat; 7 kitchens, extra baby beds. Pets allowed. Phone Randle 497-5145.

50. French Cleaning Works

At 972 Pacific Ave., Chehalis, Washington, phone SH 8-3733. Pickup and delivery in eastern Lewis County Mondays and Thursdays. "If your clothes are not becoming to you, they should be coming to us." Ron and Stump James.

WEST SIDE CHINOOK PASS HIGHWAY 410

Greenwater and Silver Creek Areas

Northeast entrance to Mt. Rainier Park. White River Valley entrance to Yakima Park, Sunrise Park and Crystal Mountain Ski Resort. Good hunting, fishing and hiking trails.

51. Silver Creek Guard Station

Located about 4½ miles west of Yakima Park Junction. Harry McCormick, Ranger-in-charge.

52. Silver Springs Lodge

Five miles west of Yakima Park Junction. Yakima Park is the highest point to which you can drive on beautiful Mt. Rainier. Five rustic cabins, seven hotel rooms, dining room, coffee shop, souvenirs, Union Service Station and wrecker service. Click and Sally O'Bannon, Star Route, Enumclaw, Washington. Phone Auburn, Silver Springs Toll Station No. 1.

53. Chinook Shell Service Station

Twenty miles east of Enumclaw, 27 miles west of Chinook Pass Summit, 20 miles west of Yakima Park on Highway 410. Food and drinks, with friendly service. L. C. Scott, Star Route, Enumclaw.

54. Naches Tavern and Cafe

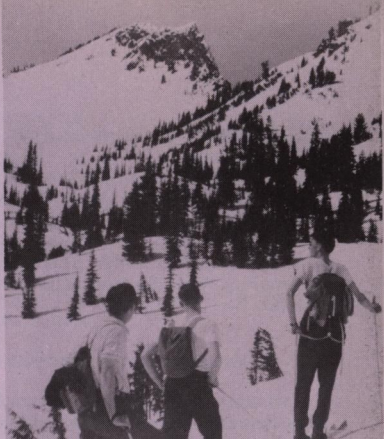
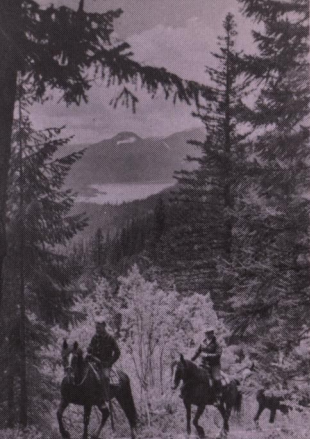
Located 18 miles east of Enumclaw at the junction of the White and Greenwater Rivers. It marks the gateway to Chinook Pass and Sunrise (Yakima Park) of Mt. Rainier. Mr. and Mrs. Joe Wigton, Enumclaw, Washington, Phone Naches Tavern.

55. Greenwater Lodge

Where the White and Greenwater Rivers meet. Located 19 miles east of Enumclaw on Chinook Pass Highway 410. Stream fishing, picnic and camping area; coffee shop and dining room; trailer spots; cabins; Chevron Service Station. Lynn and Virginia Pope, owners. Star Route, Enumclaw, Washington. Phone Greenwater No. 1.

56. McDowell's Rocks and Honey

Homemade pies, trout pond. 26 miles west of Chinook Pass Summit, 19 miles east of Enumclaw. C. L. McDowell, Star Route, Enumclaw, Washington.



Dear Vacationer:

We are extending to you our invitation to visit us. Come when you can, stay as long as you like. Our "Vacation Land" covers the Wenas, Naches and Tieton valleys on the east, and the Cowlitz valley on the west. Broad surfaced roadbeds, of the Chinook and White Pass cross—State highways, constructed at an easy grade, lift the traveler over the scenic Cascades.

You'll enjoy our "Vacation Land" any season of the year. The fast moving waters of the rivers afford vacationers many limit catches of Rainbow and Brook Trout. For those who love the lakes and smaller streams, we have them too. The waters are well stocked by the State Game Dept. The Cowlitz River is the home of the sleek hard hitting Steelhead salmon. Twenty-five pound beauties of this species are not an uncommon catch, which gives the angler thrills not soon forgotten. Side roads and trails lead into the surrounding country, where you will find an abundance of wild life, elk, deer, bear, racoon and many others.

To those who love to ride, it would be hard to imagine a more wonderful trip than to follow a forest trail, and watch for nature's many wonders to unfold their mysteries. The beautiful snow capped peaks of Mt. Rainier and Mt. Adams can be seen from many points, or one can drive right into their front yard.

Scattered along the way are comfortable lodges, guest ranches and cabins, both rustic and modern, to fit any budget. Fine food, from a cup of coffee to a complete dinner, is available with friendly service. These same hospitable people will be happy to help you plan your side trips which will add to your enjoyment.

We have much to offer in the way of recreation, fishing, hunting, boating, riding and pack trips into the back country. Year around scenic chair lift for skiing or sight seeing at White Pass summit.

You will find new pleasure, new interest, new fun in the sun. We'd be happy to welcome you.

Sincerely yours,
Yakima Cascade Resort Owners
Star Route, Naches or Packwood, Wn.

