

For the Yakima Republic (Duplicated)

For release July 22 or thereafter

From The Pacific Telephone and Telegraph Company - H. G. Searles, Manager

Clearing of right-of-way for the laying of coaxial telephone cable this fall between Seattle and Yakima is currently under way. Crews under contract to the Pacific Telephone and Telegraph company are now at work in the vicinity of North Bend clearing right-of-way in the foothills of the Cascades to make a path where the cable will lead to the Milwaukee tunnel, through Snoqualmie Pass. Later, right-of-way work will continue east of the mountains to Ellensburg and on the west side of the mountains from Lake Washington to North Bend.

The initial laying of coaxial cable between Cle Elum and Yakima is expected to be completed next year and is the first portion of a coaxial cable system to be installed between Seattle and Yakima. Telephone crews did detail survey work on the project for many months before clearing operations started.

In October, the first section of the coaxial cable will be ploughed under ground, using a plough-train which lays the cable and covers it, in one continuous operation. This coaxial cable contains four copper tubes, capable of carrying some 600 simultaneous voice messages. Also contained are other wire conductors for telephone voice channels, signalling and transmission of radio programs. A pair of tubes in the cable, when properly equipped, might also be used for transmission of television programs.

The Pacific company will spend approximately \$910,000 on this year's part of the three-year project for the installation of this new type cable which will provide faster and more dependable long distance service for Washington cities and towns.

For the Yakima Republic

For release Saturday,
July 28, 1951

From The Pacific Telephone and Telegraph Company - W. J. McLean, Manager

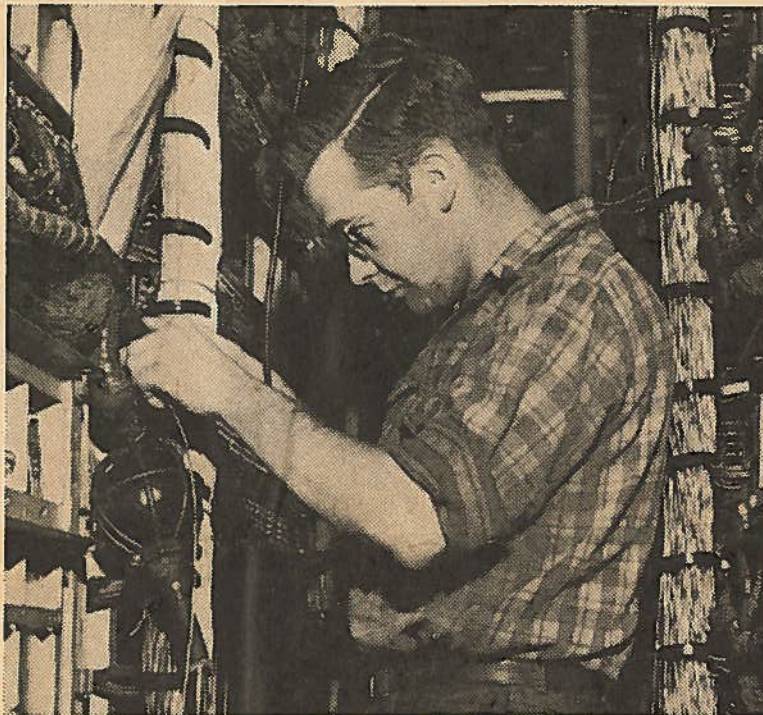
Tonight after 10:00 P.M., toll charges on calls between Yakima and Selah no longer apply. At the same time customers will begin dialing their own calls to the opposite city without the aid of an operator.

The calling procedure from Yakima telephones is as follows:
first dial "11" and then the Selah number as it is listed in the telephone directory.

Selah telephone customers, in dialing a Yakima telephone, should first dial "8" and then the Yakima number as it is listed in the telephone directory.

Both Yakima and Selah telephone customers now have new telephone directories and the new Selah telephone numbers go into effect tonight at 10:00 P.M. when dial service there begins.

From The Pacific Telephone and Telegraph Company -- W. J. McLean, Manager



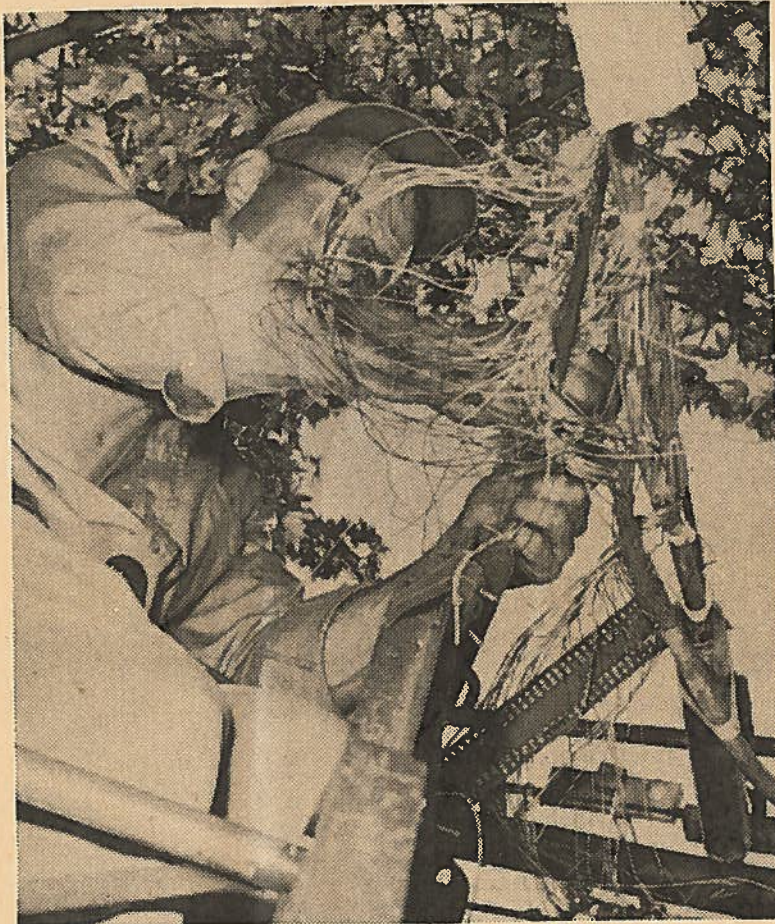
(CUT LINES)

REARRANGING FOR DIAL EXPANSION: Eugene Wright is one of the many Western Electric installers at work in the telephone building making equipment changes and additions. He is shown rerouting existing telephone lines to tie-in with new equipment.

Pacific Telephone currently has two installation projects underway. Some equipment being added is necessary to permit the start of customer dialing of calls between Yakima and Selah tonight (July 28) at 10:00 P.M.

The other project is a \$97,000 addition of dial equipment to meet the demand for more Yakima telephones.

From The Pacific Telephone and Telegraph Company - W. J. McLean, Manager



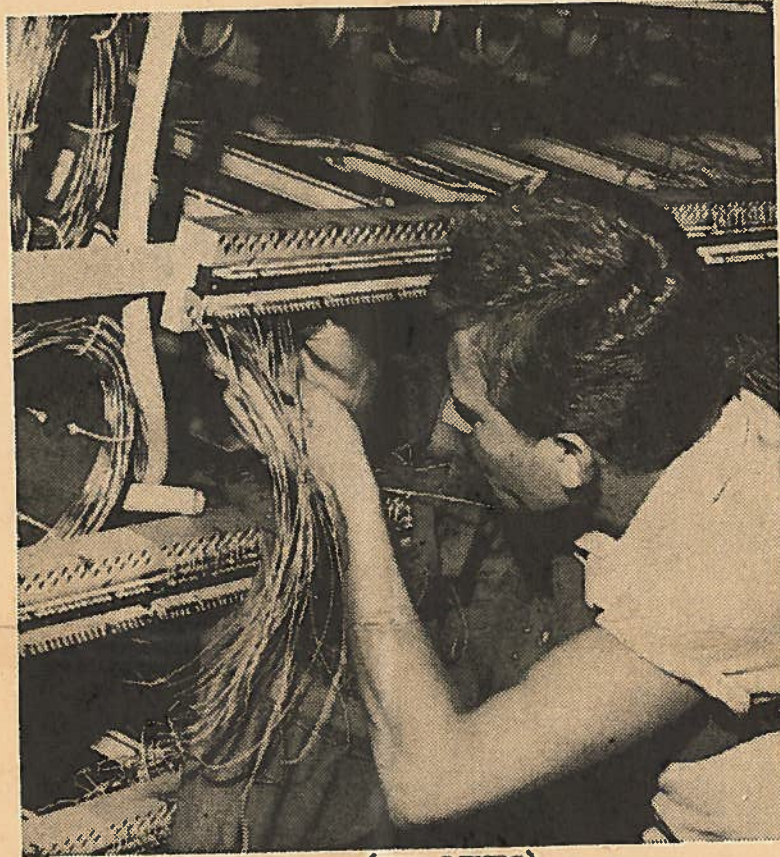
(CUT LINES)

NEW CABLES PROVIDE CONNECTIONS FOR MORE TELEPHONES: In west Yakima, splicer Beverly Bordon is shown partly through the splicing operation which joined these two sections of aerial telephone cable. There were 51 pairs of wires which had to be spliced with their counterparts. Completion of work on this new line brought telephones to many Nob Hill families and others in nearby districts. Erection of new telephone lines in the city is part of Pacific Telephone's current expansion. Workmen are also installing some \$97,000 of new dial equipment in the Yakima telephone building to provide connections for more telephones.

For the Yakima Herald
Yakima Republic ✓

For release Saturday, July 28,
with story

From The Pacific Telephone and Telegraph Company - W. J. McLean, Manager



(CUT LINES)

ENLARGING CITY'S DIAL EQUIPMENT: Rollie Weaver, Western Electric installer, is shown at work on a new main distributing frame being installed in the Yakima telephone office.

These are some of the equipment installations amounting to \$97,000 now under way to improve service and provide connections for more new telephones.

* * * * *