

PROGRAM

FIRST CONCRETE POURING CEREMONY

Opening Lower Snake River Development



ICE HARBOR LOCK AND DAM

SATURDAY, 1 JUNE 1957

ICE HARBOR AND NAVIGATION



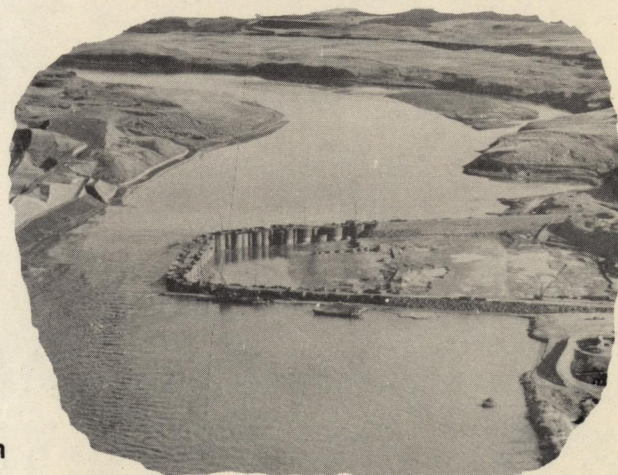
Ice Harbor Navigation Lock and Dam was named after the tiny cove on the Snake River south shore, when back in the Northwest's historical gold-rush days of 1860, river boats sought shelter from the hazards of the early spring ice jams. The tiny cove itself now lies buried beneath the access railroad approach.

During early years and prior to 1915, regular river service was maintained by sternwheel boats plying between The Dalles, Oregon and Lewiston, Idaho. Completion of the John Day Dam on the lower Columbia, now in the planning stage along with completion of Ice Harbor and the three remaining dams on the lower Snake River, will make possible slack-water navigation by commercial and pleasure crafts from

the Pacific Ocean 325 miles up the Columbia River to above Pasco and Kennewick, and for approximately 150 miles up the Snake River to above Lewiston, Idaho and Clarkston, Washington. Little river commerce has been possible on the lower Snake except during normal high water periods but it is estimated that future commerce through the Ice Harbor pool and lock will average 2,500,000 tons annually over the project's 50-year life.

ABOUT THE PROJECT

Power on the line in December 1961 is the construction schedule set by the Corps of Engineers for this \$135,000,000 project. The concrete-pouring ceremony marks the first phase of a 3-step construction program. Construction within the cofferdam is now under way on a \$30,000,000 contract to build facilities on the south shore including fish ladders, dam abutment, the skeleton powerhouse structure and a portion of the spillway bays. Relocation of some 27 miles of main line railroads will also be necessary. In addition to its major purpose of improving navigation, the dam with its initial three generators will develop 270,000 kilowatts of hydro-electric power and have an ultimate capacity of 540,000 kilowatts. The project will also make available benefits to recreation, wildlife and irrigation. Inviting to boatmen and fishermen will be a 9,200 acre lake, with some 80 miles of picturesque and rugged shore line along a 35-mile pool, extending upstream from the dam into the lower canyon of the Snake.



SCHEDULE OF CEREMONY At Ice Harbor Dam - June 1, 1957

NATIONAL ANTHEM

Camp Hanford U. S. Army Band
Chief Warrant Officer R. C. West - Band Leader

PRESENTATION OF THE COLORS

Color Guard - Veterans of Foreign Wars Post 992, Walla Walla, Wash.

INVOCATION

The Reverend Rudolph A. Anderson
President, Pasco Ministerial Alliance

OPENING OF PROGRAM - WELCOME AND INTRODUCTORY REMARKS

Mr. Herbert G. West, Master of Ceremonies

REMARKS FOR THE CORPS OF ENGINEERS

Brigadier General Louis H. Foote,
North Pacific Division Engineer

REMARKS FOR THE STATE OF WASHINGTON

Governor Albert D. Rosellini

REMARKS FOR THE STATE OF IDAHO

Governor Robert E. Smylie

REMARKS FOR THE STATE OF OREGON

Honorable Alfred H. Corbett

COMMEMORATION ADDRESS - ACTIVATING THE GREEN LIGHT OF LOWER SNAKE RIVER DEVELOPMENT

The Honorable Warren G. Magnuson
United States Senator, State of Washington

BENEDICTION

The Very Reverend Hugo J. Pautler

CLOSE OF PROGRAM

OPEN HOUSE - Project open to the public for inspection at 11:30 a.m., with Corps of Engineer personnel explaining facilities under construction and proposed, and what they are intended to accomplish.

Note: The construction contractor wishes to resume work immediately after the close of the ceremony. It is requested that the audience leave the work area as soon as possible after conclusion of the program.

Program Sponsored by the
PASCO AND WALLA WALLA PORT DISTRICTS
with the cooperation of the Chambers of Commerce and civic organizations of
Pasco and Walla Walla, Washington

Recognition is accorded the
INLAND EMPIRE WATERWAYS ASSOCIATION
for its interest and contribution over many years
to water resource development in the region and to this project

PRINCIPAL CONSTRUCTION CONTRACTORS

Guy F. Atkinson Construction Company - First Step Cofferdam
R. A. Heinz Construction Company - Initial Railroad Relocation
Montag-Halvorsen-Austin & Associates, Co. - South Shore Construction of
Powerhouse, Substructure, Partial Spillway, Fishway and Pumphouse
Principal Supply Contractor - S. Morgan Smith Co. - Hydraulic Turbines

**BEING CONSTRUCTED UNDER JURISDICTION OF U. S. ARMY ENGINEER DISTRICT,
WALLA WALLA**

