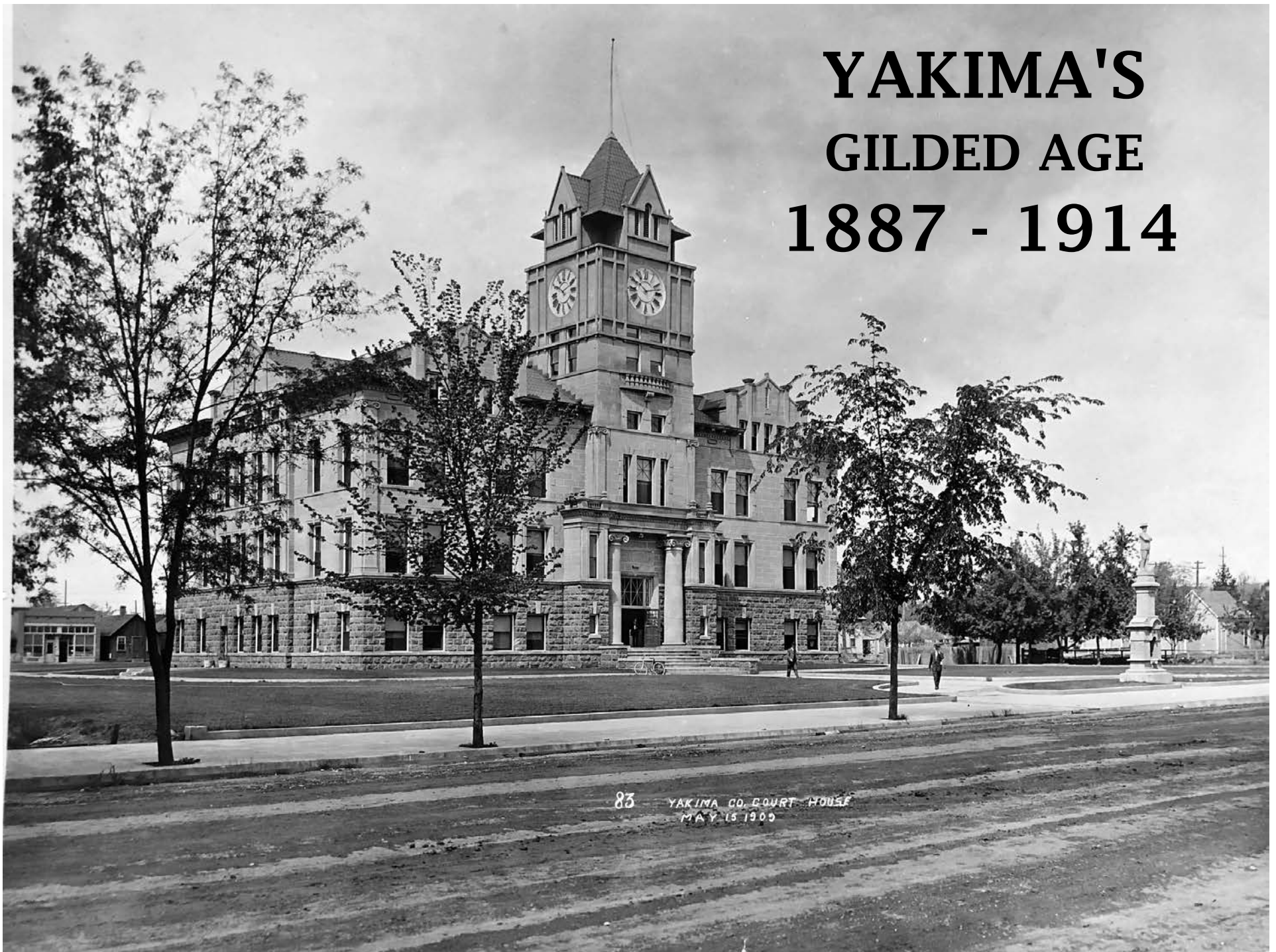


# YAKIMA'S GILDED AGE 1887 - 1914



83

YAKIMA CO. COURT HOUSE  
MAY 15 1900

# YAKIMA'S GILDED AGE 1887 - 1914

## **Yakima Memory**

Jo N Miles - Editor/Researcher

John Baule - Director Emeritus/Archivist: Yakima Valley Museum

Terry Walker - Archive Librarian, Yakima Valley Libraries

2022



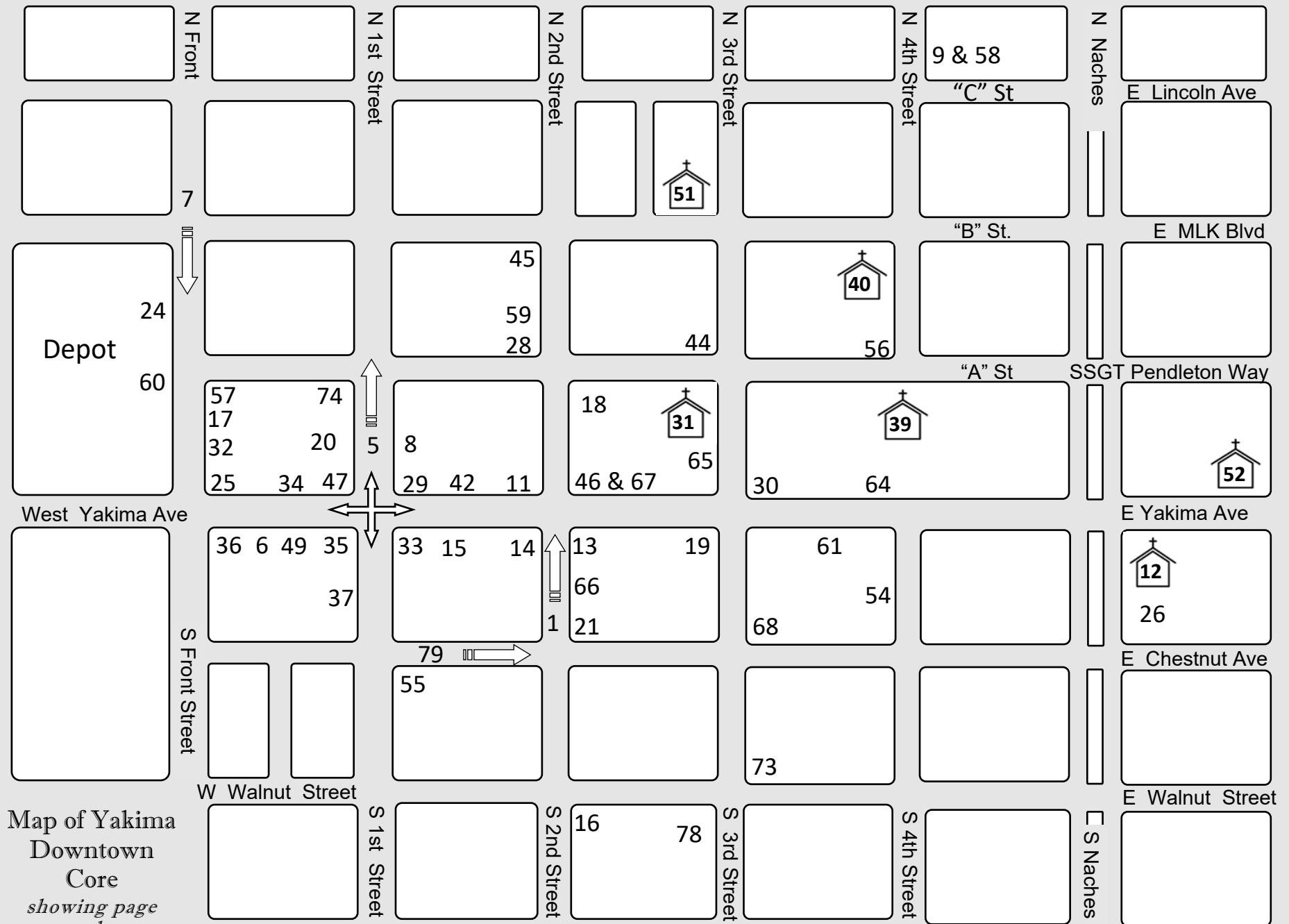
Yakima's Carnegie Library - built 1906

Relander Collection 2002 851 903

Cover photo - Yakima County Court House built 1906, photographed May 15, 1909.

Yakima Valley Museum, Photo files - Government - County - Buildings 1900-1950





## YAKIMA'S GUILDED AGE 1887 - 1914

### Contents

1. South 2nd St. Downtown
2. Early Yakama dwellings
3. Yakima River at Two Buttes 1880's
4. Railroad crew 1885
5. North First St. 1885
6. East Yakima Ave. 1885
7. North Front Street 1886
8. Opera House 1887
9. St. Joseph Academy 1887
10. West Shore Magazine 1887
11. Pioneer Block 1887 / 1903
12. St. Michael's Episcopal 1888
13. Lewis-Engle Building 1888
14. First National Bank 1888
15. Yakima National Bank 1888
16. Central School 1888
17. City Hall / Opera House 1889
18. Syndicate Building 1889
19. Hotel Yakima 1889
20. Hotel Bartholet 1889
21. Cadwell Building 1889
22. S.J. Lowe Block 1889
23. Columbia School 1890
24. Northern Pacific Depot Park 1898
25. Lund Building 1889
26. St. Michael's Rectory 1899
27. High School 1900
28. Larson's Theatre 1900
29. Yakima Valley Bank 1902
30. Coffin Bros. Department Store 1902
31. Presbyterian Church 1902
32. Commercial Saloon Front Street 1902
33. Yakima National Bank 1903
34. Schott's Cash Store 1903
35. Sloan Building 1903
36. Shardlow Building 1903
37. Pacific Hotel 1903
38. Summit View School 1904
39. Methodist Church 1905
40. St. Joseph Catholic Church 1905
41. A.E. Larson Mansion 1905
42. E Yakima Ave Pioneer Block 1905
43. Barge School 1905
44. Carnegie Library 1906
45. Yakima County Courthouse 1906
46. Miller Building 1906
47. Hotel Washington 1906
48. Lincoln School 1907
49. Empire Hotel 1908
50. Native American Presence 1908
51. Church of Christ 1908
52. First Baptist Church 1908
53. N Yakima High School 1908
54. YMCA 1908
55. Hotel Tieton 1909
56. Marquette School 1909
57. Hotel Sydney 1909
58. St. Joseph's Academy 1909
59. Elk's Temple 1909
60. Northern Pacific Depot 1910
61. Commercial Hotel 1910
62. Savoy Hotel 1910
63. Carbonneau Castle 1910
64. Masonic Temple 1911
65. Coffin-Rundstrom 1911
66. Hotel Grand (Donnelly) 1911
67. Miller Building 1911
68. Federal Building 1911
69. Sumach Park Tea House 1911
70. Sumach Park Boat House 1911
71. Blossom Parade Pioneer Block 1912
72. Blossom Parade Lewis-Engle 1912
73. Fire Department 1912
74. Michigan Hotel 1913
75. St. Elizabeth's Hospital 1913
76. Natatorium 1913
77. Indoor swimming pool 1913
78. National Guard Armory 1914
79. Chestnut St. circa 1899
80. City View of buildings 1910

Present-day South 2nd Street contains a parking lot where early twentieth century buildings once stood.



Jo N Miles 2022

## YAKIMA'S GILDED AGE 1887 - 1914

The Gilded Age was a period of vibrant economic activity that transformed Yakima's built environment from a dusty wooden railroad town into a substantial community with imposing brick and stone buildings.



Yakima's downtown south 2nd Street facing north from Chestnut St. in 1912.

Yakima Valley Museum - 2002- 801- 875 - photograph by Frank P. Lanterman

Present-day Toppenish Creek is pictured on the Yakama Reservation.



Jo N Miles 2010



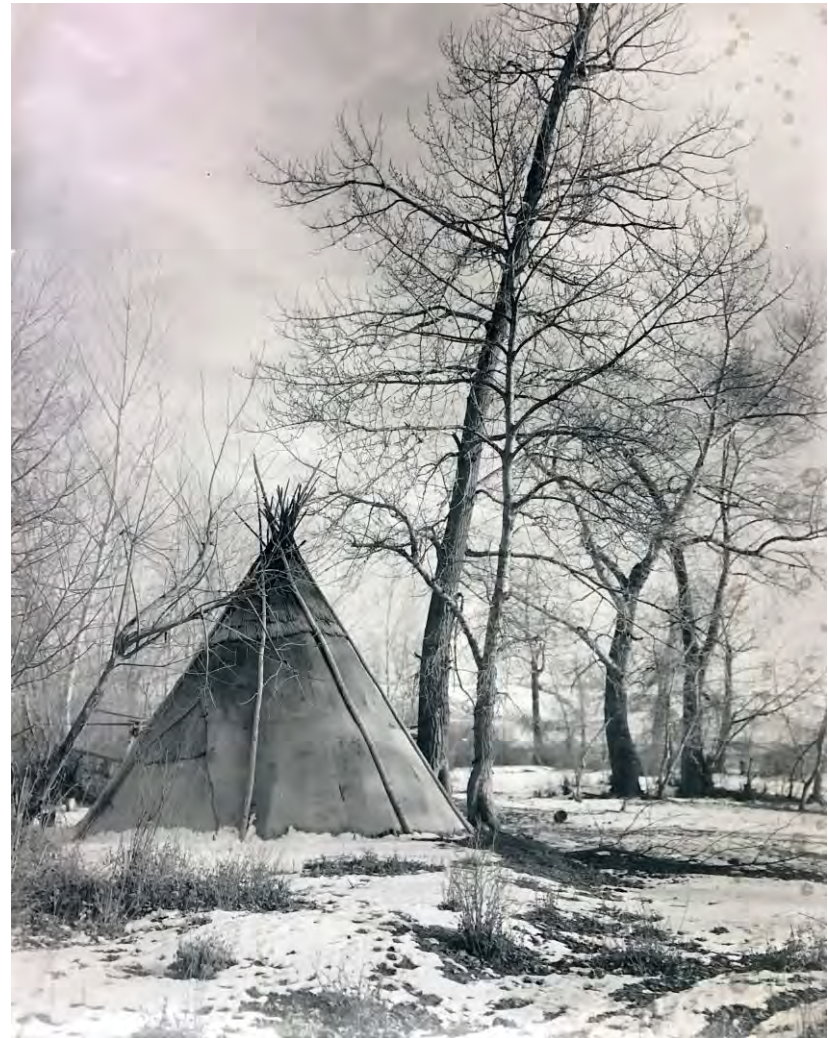
Before towns were established in the Yakima River valley, eastern Washington was inhabited by Early Man and Indigenous Peoples for at least 13,000 years according to archaeologists.

Yakama Dwelling



Edward S. Curtis, 1910, Library of Congress

Toppenish Creek



Lee Moorhouse, 1887, Yakima Valley Museum



Present-day Yakima River is pictured with Two Buttes in view in the background.



Jo N Miles 2022



The Yakima River flowed freely for centuries before the introduction of modern irrigation practices and intensive agricultural production by Euro-Americans.



Yakima River at Two Buttes / Pah-oy-ti-koot, (Union Gap)  
Yakima Valley Museum - 2002-801-831- photograph by Edward J. Partridge, 1880's

A modern locomotive is pictured traveling near the Yakima Depot.



Jo N Miles 2022

In 1885 the Northern Pacific Railroad entered the Yakima Valley and established a new town named North Yakima that was located 4 miles north of existing Yakima City (later named Union Gap).



Construction Crew, Northern Pacific Railroad, 1885, Yakima Valley Museum - Photo Album #2



Contemporary North First Street contains a parking lot where early buildings once stood in 1885.



Jo N Miles 2022

The first structures built along North First Street in 1885 were wooden frontier-style buildings.



Yakima Valley Museum - 2002-801-874 and Yakima Valley Libraries, Relander Collection Drawer 5 Folder 25 A

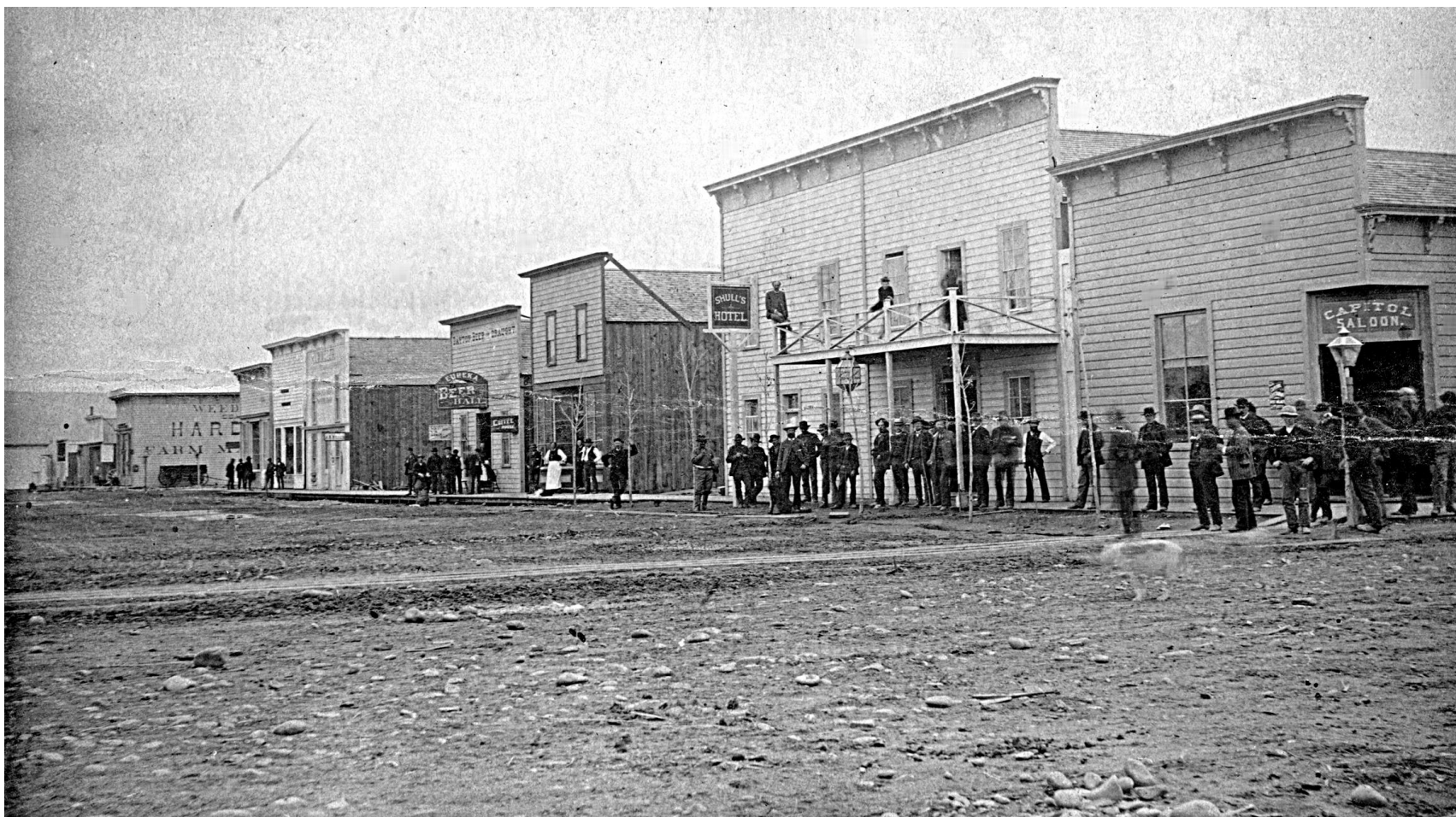
A glance down East Yakima Avenue in 2022 reveals a much different urban setting. Crowds of pedestrians and bare dirt streets have given way to paved streets and parking lots designed to accommodate automobiles.



Jo N Miles 2022



In 1885 East Yakima Avenue also contained a number of wooden structures on the south side between S Front St and the intersection with South First Street (far left). Some buildings were moved on rollers from Yakima City (now Union Gap) after Northern Pacific offered free lots to businesses as an incentive to move to North Yakima.



Yakima Valley Museum - 2002-802-384

A county jail and a string of modern vehicles have been added to the century old buildings that still remain on present-day North Front Street .



Jo N Miles 2022



North Front Street in 1886 contained a row of buildings stretching south toward E Yakima Avenue. The depot can be seen on the far right in the distance, with Union Gap's hills in the background. The building at lower left is the approximate location of modern day Yakima County jail in 2022.



Yakima Valley Museum - 2002-801-831

A parking lot occupies the former site of Mason's Opera House (built in 1887).



Jo N Miles 2022

One of the first brick buildings constructed in 1887 at the beginning of Yakima's Gilded Age was Mason's Opera House, built by Alan Mason on the east side of the first block of North First Street.



Spike & Co. 1890, Yakima Valley Museum, Photo Album #16



A parking lot and modern office buildings occupy the former site of St. Joseph Academy. The site is now the home of a title company and law office in 2022.



Jo N Miles 2022

St. Joseph Academy was built in 1887 on the east side of North 4th Street between C and D streets. The school was one of the earliest brick buildings built in North Yakima.



Yakima Valley Museum - Postcards - Schools - 2008-131-441-Ron Ott Collection

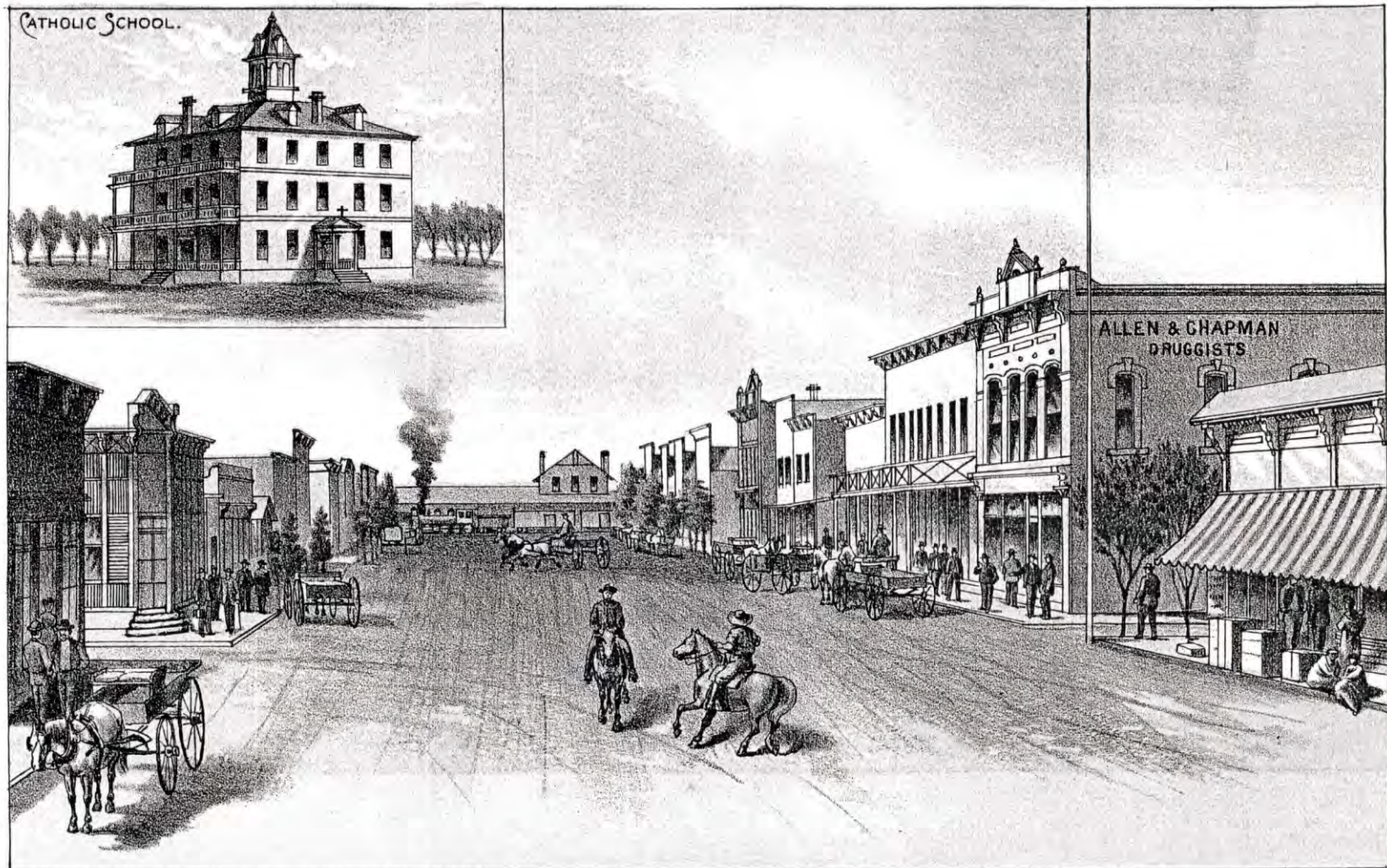


Present-day East Yakima Avenue no longer has a depot placed in the middle of the road as it did in 1887.



Jo N Miles 2022

An artist with West Shore magazine published a drawing in 1887 showing what the town of North Yakima looked like during that year.



NORTH YAKIMA, W. T.—YAKIMA AVENUE, LOOKING WEST.

West Shore Magazine-Portland, Oregon. Yakima Valley Museum, 979.82 Yak



The profile of present-day buildings at the intersection of East Yakima Avenue and North 2nd Street resemble the earlier street scene (below) from 1903.



Jo N Miles 2022

Buildings constructed in the Pioneer Block in 1887 on the north side of E Yakima Ave between First and Second streets appeared similar in 1903 and still look much the same in 2022.



Yakima Valley Museum-2002-801-739 - photograph by Frank P. Lanterman

St. Michael's Church on Naches Avenue, the oldest church building in Yakima, retains its historical elegance during the twenty-first century.



Jo N Miles 2008



St. Michael's Episcopal Church built in 1888 at 5 South Naches Ave remains at the same location in 2022.



Washington State Historical Society 1994.70.263 - photograph by F. Jay Haynes 1890

A modern restaurant occupies the former site of the Lewis-Engle Building at the SE corner of East Yakima Avenue and South 2nd Street.



Jo N Miles 2022

The Lewis-Engle Building was built in 1888 at 202 E Yakima Ave. It housed the Jade Tree for many years until it was demolished and eventually became the site of Cowiche Canyon Kitchen, which is located there in 2022.



Spike & Co. 1890 - Yakima Valley Museum - 2008-027-112 - Photo Album #16

The eleven story Larson Building, constructed in 1931, replaced the 1888 First National Bank building.



Jo N Miles 2022



First National Bank was built in 1888 at the SW corner of E Yakima Ave & S 2nd St. It was replaced by the Larson Building in 1931.



Spike & Co. 1890, Yakima Valley Museum, Photo Album #16



In 2022 Key Bank is located on the same site where Yakima National Bank once stood.



Jo N Miles 2022

Yakima National Bank was constructed in 1888 on the south side of the 100 block of E Yakima Ave. It was later demolished and replaced by the east portion of Key Bank.



Spike & Co. 1890, Yakima Valley Museum, Photo Album #16

Yakima Police Department's back lot occupies the former site of Central School on South 2nd Street between Walnut and Spruce Streets.



Jo N Miles 2022



Central School was built in 1888 at 217 S 2nd St. It was demolished in 1924.



Yakima Valley Museum - 2002-801-659 - Photographs - Schools

The original city hall building (after some re-modeling) still stands next to the Opera House on North Front Street.



Jo N Miles 2022

City Hall (left) was built in 1889 at 27 N Front St, and the Opera House next door in 1890 at 25 N Front St. Both buildings remain in the year 2022.



Yakima Valley Museum - 2002-802-537 - photograph by Frank P. Lanterman



In 2022 a parking lot sits at 29 N 2nd St where the Syndicate Building stood in 1951.



Jo N Miles 2022

The Syndicate Building was constructed in 1889 at 29 N 2nd St. Over the years the building has housed a furniture store, federal court, an undertaker and, from 1905 to 1951, the Yakima Daily newspaper.



Spike & Co. 1890, Yakima Valley Museum, Photo Album #16

The street scene has changed significantly on the south side of the 200 block of East Yakima Avenue during the past century. The Olive Garden now occupies the same site as the old Hotel Yakima.



Jo N Miles 2022



Hotel Yakima was built in 1889 at 222 E. Yakima Ave. The building was demolished in 1989, with plans to build commercial offices.



Yakima Valley Museum - Oversize Photographs - Hotel

A parking lot exists where the Bartholet Hotel once stood on the east side of North First Street.



Jo N Miles 2022



In 1885 Hotel Bartholet was the second hotel to be moved from Yakima City to the corner of Chestnut and Front street in North Yakima. That building was destroyed by fire and rebuilt in 1889 at 10 N First St. The building was demolished in 1989.



Spike & Co. 1890, Yakima Valley Museum - 2002-802-553m Photo Album #16



The Cadwell Building and Grand Hotel (later Donnelly) once stood on the east side of South 2nd Street where a parking lot exists today.



Jo N Miles 2022

The Cadwell Building (far right) was built in 1889 at the NE corner of S 2nd St. and Chestnut St. This 1912 photograph shows both the Cadwell Building and the Grand Hotel. Both have been replaced with a public parking lot (2022).



Yakima Valley Museum- Postcards - Hotels- 2008-131-441-Ron Ott Collection

A drive-up fast-food restaurant replaced the shops and stores once located on the Lowe Block more than 100 years ago.



Jo N Miles 2022



The S. J. Lowe block was built in 1889 on the NW corner of E Yakima Ave and N First St. It featured a three-story brick building and a wood-sided hardware store.



Spike & Co. 1890, Yakima Valley Museum, Photo Album #16

Present day Yakima School District Central Administration offices are located where Columbia School once stood on North 4th Avenue.



Jo N Miles 2022



Columbia School was built in 1890 at 112 N 4th Ave. It served as an elementary school, a high school and, from 1928 to 1949, the home of Yakima Valley Junior College. The building was seriously damaged by fire in 1954.



Yakima Valley Museum photographs - Schools - Columbia - by Frank P. Lanterman



A contemporary parking lot and depot built in 1910 occupy the site where Northern Pacific Park existed in 1898.



Jo N Miles 2022

Northern Pacific Railway built a new train depot on N Front St in 1898, and added a lush public park that included a fountain, trees, and irrigation sprinklers.



Yakima Valley Museum -2008-131-669 - Postcards - Ron Ott Collection

Present day Lund Building remains at the NE corner of South Front Street and E Yakima Ave.



Jo N Miles 2022



The Lund Building was constructed in 1899 at 5 N Front St. Originally it housed the Alfalfa Saloon. The building still remains in 2022.



Yakima Valley Museum - 2002-802- 584 - photograph by Jim Newbill - 1984

The lower half of St. Michael's original rectory has been preserved at St. Michael's Church on Naches Avenue.



Jo N Miles 2022

St. Michael's Rectory was constructed in 1899 on the south side of the Episcopal Church at 5 Naches Ave S.  
The bottom story of the original building is all that remains in 2022.



Yakima Valley Museum - 2008-027-316 - Photographs - Churches



Present day office buildings occupy the former site of the North Yakima High school (1900 - 1907) on North 3rd Street between D and E streets.



Jo N Miles 2022

The original North Yakima high school building and Lincoln Annex were built in 1900 on N 3rd St between D & E streets. The building was destroyed by fire on January 6, 1907.



Yakima Valley Museum - 2002-801-698 - Photographs - Schools-City-High School



Performance Park replaced the early Larson's Theatre at the NW corner of N 2nd Street and SSgt Pendleton Way (formerly A Street).



Jo N Miles 2022



Larson's Theatre was built in 1900 at the NW corner of N 2nd St and A St. The building was renamed Yakima Theatre in 1903.



Yakima Valley Museum - 2002-154--021 - Oversize photographs - Buildings

A modern bank building now occupies the lot where early Yakima Valley Bank stood in 1902.



Jo N Miles 2022

Yakima Valley Bank incorporated in 1902 and was located at 101 E Yakima Ave on the NE corner intersection with North First Street.



Brooks & Schreiber, *Yakima Beautiful*, 1909, p 28. Yakima Valley Museum



The former downtown Yakima Mall stands where Coffin Bros. Department store once flourished in 1902.



Jo N Miles 2022

Coffin Bros. Department Store was built in 1902 at 301 E Yakima Ave on the NE corner of E Yakima Ave and N 3rd St. The building was demolished in 1954.



Yakima Valley Museum - 1996-036-001 - Olive E. Thompson

The Liberty Building, constructed in 1931, replaced the Presbyterian Church originally at 32 N 3rd Street.



Jo N Miles 2022



In 1902 the Presbyterian Church was built at N 3rd St and A St. It was replaced by the Liberty Building that stands there in 2022.



Yakima Valley Museum - 2001-800-750 - Photographs - Churches - by Frank P. Lanterman

National Register of Historic Places: "Erected in 1902...the first floor was a tavern and the upper story served as a hotel."



Jo N Miles 2022

The Commercial Saloon was constructed in 1902 at 7 N Front St. The building remains in 2022.



Contemporary photo 2020 - anon



In 2022 Key Bank occupies the lot where Yakima National Bank was built in 1903 at the corner of S. First Street and E Yakima Ave.



Jo N Miles 2022

In 1903 Yakima National Bank built a new building at the corner of E Yakima Ave and S First St, just a few feet west of their original site.



Yakima Valley Museum - Oversize Photographs - Buildings

A fast-food restaurant occupies the space where Schott's Cash Store and Fawcett Bros. Hardware stood in 1903.



Jo N Miles 2022



The former Lowe block at the NW corner of E Yakima Ave and N First St was occupied in 1903 by Henry H. Schott Cash Store and Fawcett Bros., the same corner that McDonald's restaurant occupies today.



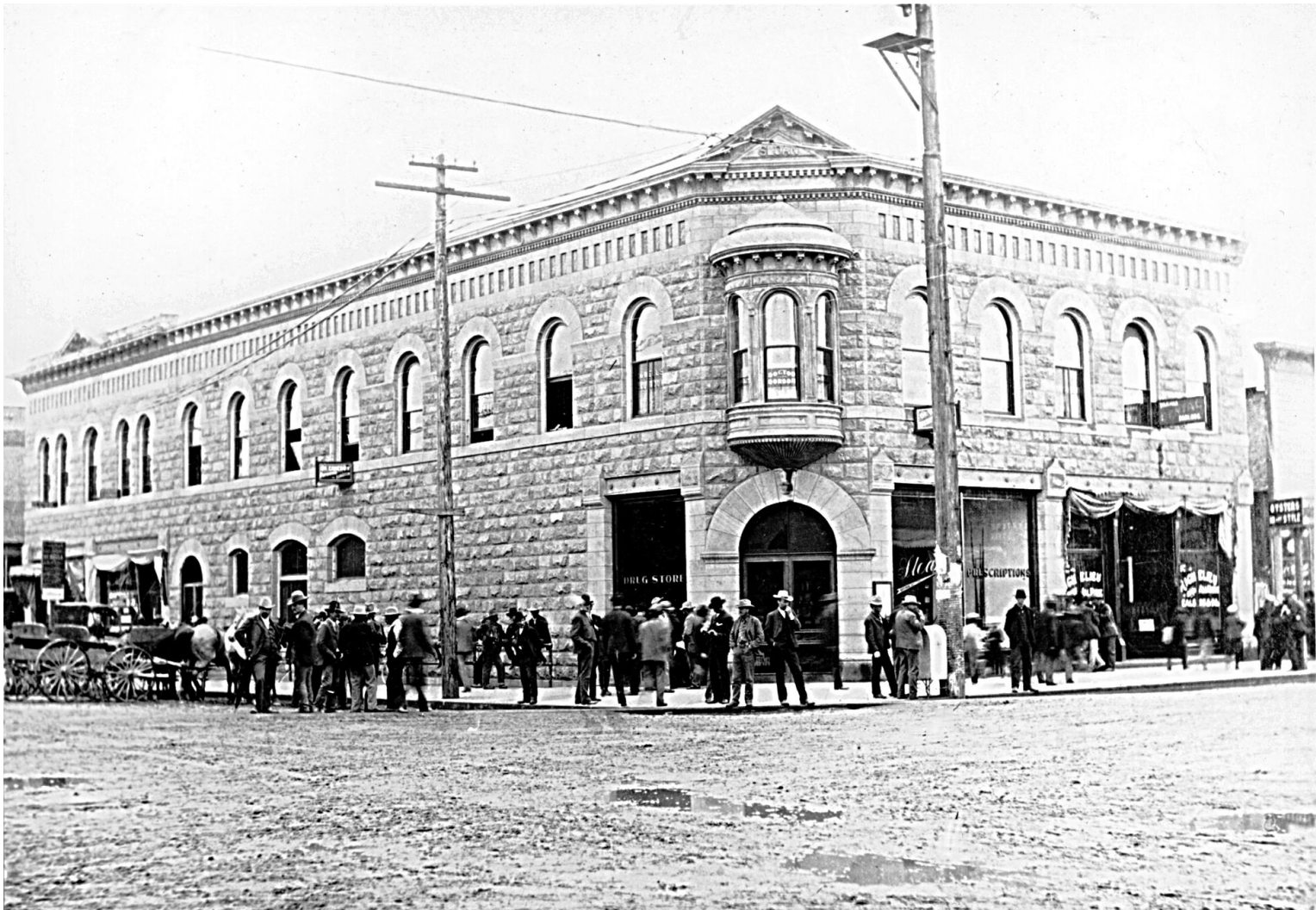
Yakima Valley Museum - 2002-801-848 - Photograph by Frank P. Lanterman

Drive-up banking and modern traffic signals dominate the view where the Sloan Building stood in 1903.



Jo N Miles 2022

The Sloan Building was constructed in 1903 at 24 E Yakima Ave on the SW corner intersection with S First St.  
It is the site of Key Bank drive-up services in 2022.



Yakima Valley Museum - 2002-802-588 - photographer unknown



Drive-up banking occupies the space at S Front St and E Yakima Ave where Frank Shardlow's saloons once stood.



Jo N Miles 2022

The Shardlow Building was constructed at 3 S Front St in 1903. It contained a number of saloons and restaurants on the ground floor and boarding rooms on the upper level. It is the site of Banner Bank drive up in 2022.



Yakima Valley Museum 2008-131-620 - Postcards - Yakima Ave 1900-1910 - Ron Ott Collection

No longer a hotel, the Pacific now houses Downtown Association of Yakima offices and Yakima Maker Space.



Jo N Miles 2020



The Pacific Hotel was built in 1903 at 16 S First St and photographed in 1910 after a third floor had been added. Camels passed by during one of many parades. The building remains at its original location in 2022.



Yakima Valley Museum - 2008-131-572 - Postcards - Hotels - Ron Ott Collection

In 2022 Roosevelt School stands where early Summit View School was located in 1904.



Jo N Miles 2022



Summit View School was built in 1903 at the intersection of 16th Ave and Summitview Ave where modern Roosevelt School stands in 2022.



Yakima Valley Museum - 2008-131-411 - Postcards - Schools- Summit View - Ron Ott Collection



No sign of a church remains on SSgt Pendleton Way ("A" St.) at the intersection with North 4th Street.



Jo N Miles 2022

The Methodist Church was built in in 1905 at N 4th St and A St and demolished in 1968.



Yakima Valley Museum - 2008-131-061 - Postcards - Churches - Ron Ott Collection

The exterior elegance of St. Joseph Catholic Church has been preserved for more than 100 years.



Jo N Miles 2022



St. Joseph Catholic Church was built in 1905 at 212 N 4th St. The building was extensively damaged by fire in 1999, then rebuilt and reopened in 2001.



Yakima Valley Museum - 2006-800-004 - Oversize photographs - Churches

Still stately after more than a century, the Larson mansion attracts visual attention from motorists and passers-by.



Jo N Miles 2022



The A.E. Larson Rosedell Mansion at 1811 W Yakima Ave was under construction in 1905. The building remains at its original location in 2022.



Yakima Valley Museum - 2001-801-197



The 2022 profile of buildings lined up along Yakima Avenue is similar to how it appeared in 1905, but there are fewer donkeys along the 100 block of Yakima Avenue in 2022.



Jo N Miles 2022

A pack train was photographed in 1905 on the north side of the then unpaved 100 block of E Yakima Avenue. Also known as the Pioneer Block, the buildings were built in 1887.



Yakima Valley Museum - Oversize Photographs - Streets - Yakima Ave 1900 - Photographer 'Scott' N. Yakima

In 2022 a modern church sits where Barge School was located in 1905 on N. Naches Ave. at East "E" Street.



Jo N Mies 2022



Barge School was built in 1905 at N Naches Ave & East E St.



Yakima Valley Museum - 2008-131-446 - Postcards - Schools - Ron Ott Collection

A modern expanded library opened in 1959 that replaced Yakima's Carnegie Library built in 1906.



Jo N Miles 2022

Yakima's Carnegie Library was built in 1906 at 102 N 3rd St. It was demolished in 1957 to make way for a new library building at the same location.



Yakima Valley Museum - Delle Studio Photo Album #55



A courthouse building constructed in 1941 sits on what once was the front lawn of the original 1906 building.



Jo N Miles 2022

Yakima County Courthouse was built in 1906 on the SW corner of N 2nd St and A St until it was demolished in 1961 and replaced by a modern building that exists there today (2022).



Yakima Valley Museum - 2001-801-024 - Government - County - Buildings

A one-story bank building occupies the corner where the Miller Building once stood.



Jo N Miles 2022



The Miller building was constructed in 1906 at the NE corner of E Yakima Ave and N 2nd St. It was demolished in 1986.



Yakima Valley Museum - 2002-802-572, -Commercial Facilities - Office Buildings - by Frank P. Lanterman

A modern drive-up restaurant occupies the corner where Hotel Washington once stood.



Jo N Miles 2022

In 1906 builder Patrick Mullins constructed Hotel Washington, a new addition to the Lowe building at the NW corner of East Yakima Ave and N First St.



Yakima Valley Museum - 2008-131-547 - Postcards - Commercial Facilities - Hotels - Ron Ott Collection



Lincoln School has been replaced by office buildings on N. 3rd St. between D and E Streets.



Jo N Miles 2022

The Lincoln School was built in 1907 at 401 N 3rd St. where modern office buildings exist in 2022.



Yakima Valley Museum - Postcards - Schools - Lincoln

Drive-up banking occupies the south side of E. Yakima Ave. where the Empire Hotel once stood.



Jo N Miles 2022



In 1908 the newly built Empire Hotel at 12 E Yakima Ave can be seen on the right in the street scene photograph taken by Asahel Curtis. The building was demolished sometime in the 1940's.



Yakima Valley Museum - 2002-801-846 - Photographs - Yakima Avenue 1900 - 1910 - by Asahel Curtis

A twenty-first century replica of a Native mat lodge was displayed at St. Joseph Mission at Ahtanum Creek in 2008.



Jo N Miles 2008



Native American presence was common in and around Yakima in 1908. Residents often shared their association with this unique heritage on postcards mailed to friends and relations all over the country.



Yakima Valley Museum - Postcards - 2021-047-001 - Native Americans



The church building has maintained its magnificent appearance for more than a century at 221 E Martin Luther King Blvd.



Jo N Miles 2022

The Church of Christ building was built in 1908. It still stands as Vineyard church at 221 E Martin Luther King Blvd in 2022.



Another well preserved church building enhances downtown Yakima at the corner of N 6th St and E Yakima Avenue.



Jo N Miles 2022



First Baptist Church building was built in 1908.



Yakima Valley Museum - 2001-800-792, Photographs - Churches - Jack R. Whitnall

The original sign from old North Yakima High School can still be seen at the site of A.C. Davis High school in 2022.



Jo N Miles 2022



North Yakima High School was built in 1908 at S 6th Ave. and W Pine St. - the same location as A.C. Davis High School in 2022.



Yakima Valley Museum - Postcards - Schools - 2008-131-477 - Ron Ott Collection



The view of the back of The Capitol Theatre in 2022 where Yakima's first YMCA building stood in 1908.



Jo N Miles 2022

Yakima's first YMCA building was built in 1908 on the west side of S 4th Street.



Yakima Valley Museum - Postcards - Organizations - 2008-131-3251 - Ron Ott Collection

The renovated Hotel Tieton building is pictured in 2022 at the corner of S. First Street and East Chestnut.



Jo N Miles 2022



Hotel Tieton was built in 1909 at the SE corner of S First Street and E Chestnut, where it remains in 2022.



Yakima Valley Museum - Photographs - Commercial Facilities - Hotels

The original Marquette School still stands surrounded by modern paved streets, stop signs, street lights and shade trees.



Jo N Miles 2022

Marquette School was built in 1909 at 202 N 4th St., where it still stands in 2022.



Yakima Valley Museum, 2002-801-708 - Photographs - Schools - Parochial - by Frank P. Lanterman



The original Hotel Sydney building still stands on the SE corner of N. Front St. and SSgt Pendleton Way  
(formerly A St.)



Jo N Miles 2022

Hotel Sydney was built in 1909 at the SE corner of N Front St and A St. Retail businesses, the hotel lobby, bar and cafe were all on the ground floor. The top two floors held 60 guest rooms.



Yakima Valley Museum - 2008-131-606 - Postcards - Hotels - Ron Ott Collection

A parking lot and office buildings occupy the lot where St. Joseph's Academy once stood at N 4th St between C and D.



Jo N Miles 2022



St. Joseph's Academy was constructed in 1888, then remodeled and expanded in 1909 at N 4th St between C St and D St. The school was closed in 1969. It was later demolished and replaced by the modern office buildings that exist there in 2022.



Yakima Valley Museum - 2002-801-709 - Photographs - Schools - Parochial - by Frank P. Lanterman

The Elks Temple once stood at 114 N 2nd St where a Yakima County employee parking lot exists in 2022.



Jo N Miles 2022

Elks Temple was built in 1909 at 114 N 2nd St where a county parking lot exists in 2022.



Yakima Valley Museum - Postcards - Organizations - 2008-131-573 - Ron Ott Collection



Yakima's remaining depot building still stands where it was constructed in 1910.



Jo N Miles 2022

The Northern Pacific's North Yakima train depot was built in 1910 at 32 N Front St.



Yakima Valley Museum - 2002-802-165 - Photographs - Transportation - Railroads - by Frank P. Lanterman

The original Commercial Hotel and the Wilson building still anchor the SE corner of E. Yakima Ave and S 3rd St in 2022.



Jo N Miles 2022



In 1902 the Wilson Building in was built on the corner of the 300 block of E Yakima Ave. The Commercial Hotel was built in 1910. Both buildings remain in 2022.



Yakima Valley Museum - 2008-131-3217 -Postcards - Hotels - Ron Ott Collection

The Savoy Hotel was built in 1910, and still stands at 322 W Yakima Ave in 2022.



Contemporary photo 2020 - anon

The Savoy Hotel lobby was a popular place to get dressed up and socialize in 1921.



Yakima Valley Museum 2002 803 672



The Belinda Mulrooney Carbonneau Castle was built in 1910 at 620 S 48th Ave. where it remains in 2022.



Contemporary photo 2021 - anon

Belinda Mulrooney Carbonneau (1875 - 1967) made a fortune during the Klondike gold rush operating a hotel in Dawson City and several mining claims. She moved to Yakima and built a substantial house where she was living with her parents in 1920.



Yakima Valley Museum 2003 800 022



Yakima Valley Museum 2004 800 198

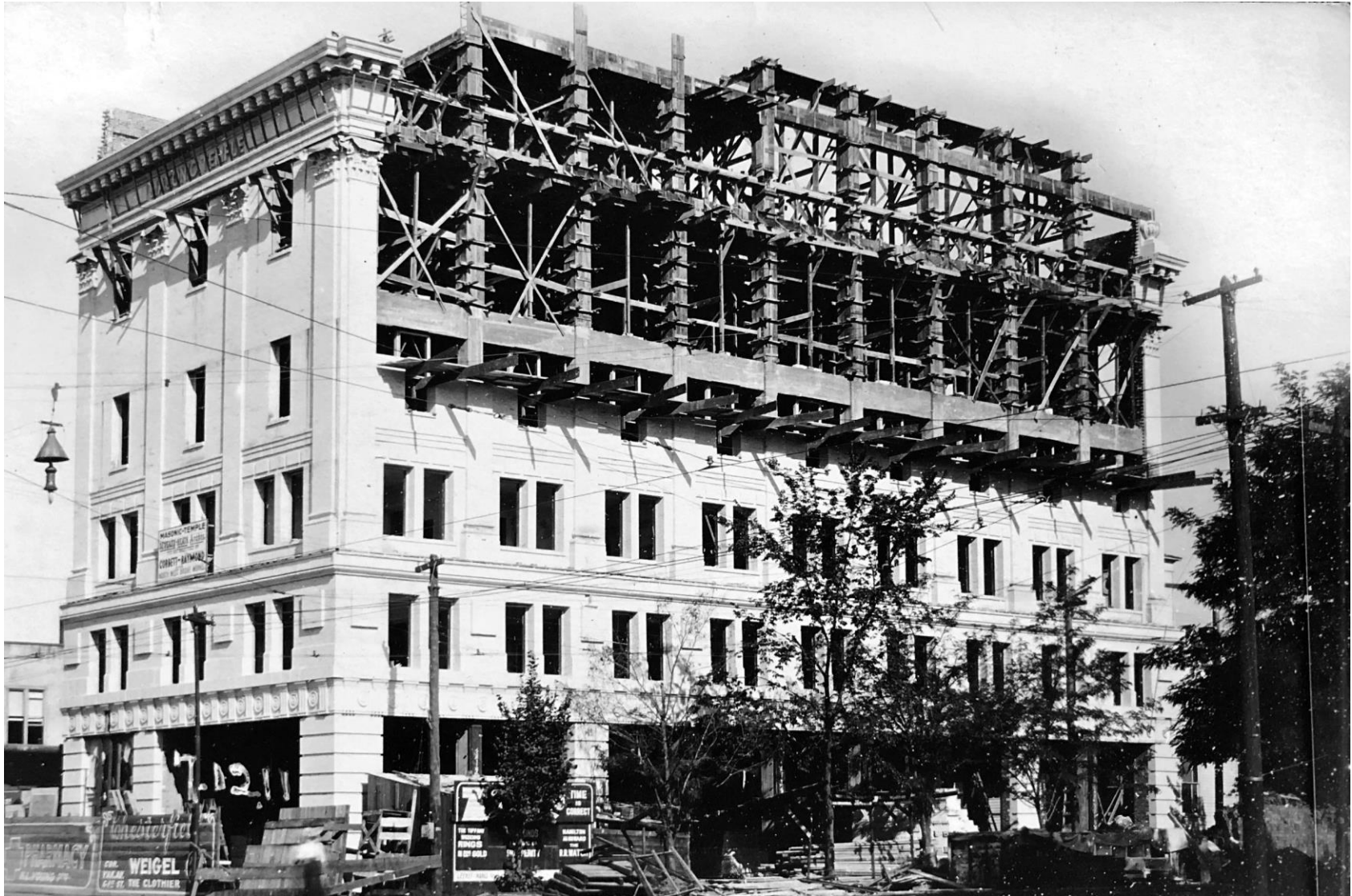
The Masonic Temple has been remodeled into a modern hotel facility at the center of downtown Yakima.



Jo N Miles 2022



The Masonic Temple was under construction in 1911 at 321 E Yakima Ave. It housed business offices and retail on the lower floors with a ceremonial Freemasons hall on the top floor.



Yakima Valley Museum - Postcards - Organizations - Masonic

The Coffin-Rundstrom Furniture building, built in 1911, now houses a mini mall, bakery and record shop.



Jo N Miles 2022

The Coffin-Rundstrom Furniture building was under construction in 1911 at 6 N 3rd St.



Yakima Valley Museum - Photo Album #52



In 2022 a parking lot occupies the site of the Hotel Grand (later Hotel Donnelly) on S 2nd Street.



Jo N Miles 2022

Hotel Grand (Donnelly) was built in 1911 at 17 S 2nd St, adjacent to the Cadwell Building (right), which was built in the 1890's. The hotel was destroyed by fire in 1975.



Yakima Valley Museum - 1996-154-002 - Photographs - Commercial Facilities - Hotel

A one-story bank building replaced the once stately Miller Building.



Jo N Miles 2022



The Miller Building was built in 1906 at the NE corner of E Yakima Ave and N 2nd St. In 1911 it was expanded and extended to six stories. It was demolished in 1986 and became the site of Wheatland Bank.



Yakima Valley Museum - Postcards - Commercial Facilities - Office Buildings

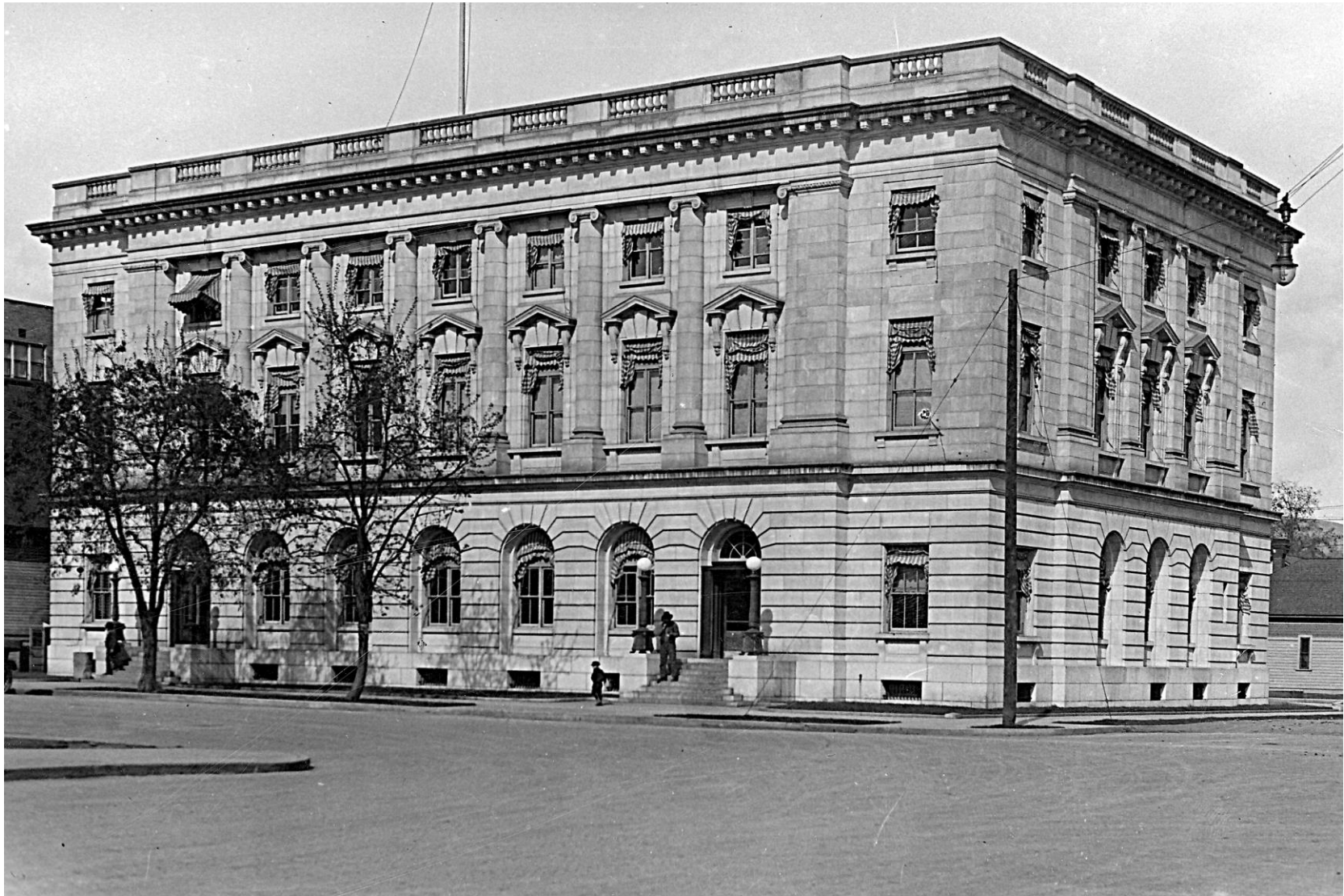
An expanded federal building retains its original grandeur at the same location on S 3rd St and E Chestnut. An addition was added on the east side of the building (note its absence from the photo below.)



Jo N Miles 2022



The Federal Building - Post Office - Courthouse was built in 1911 at 25 S 3rd St where the building remains in 2022.



Yakima Valley Museum - 2001-801-063 - photograph by Frank P. Lanterman



In 2022 a picnic shelter on the Yakima Greenway stands in the approximate vicinity where Sumach Park was located from 1908 to 1913.



Jo N Miles 2022

Sumach Park was privately owned by banker William Steinweg, but it was open to the public. This Tea House at Sumach Park was photographed in 1911.



Reflection Lake at Sarg Hubbard Park on the Yakima Greenway is a reminder of the old Sumach lagoon from more than a century ago.



Jo N Miles 2022



The Boat House, pictured at Sumach Park in 1911, hugged a lagoon on the Yakima River, near present day Sarg Hubbard Park.



Yakima Valley Museum - 2008-131-2770 - Postcards - Parks - Ron Ott Collection

More than 100 years ago the Blossom Festival parade of 1912 was photographed on this block of E Yakima Ave.



Jo N Miles 2022

Pioneer Block and The Emporium at E Yakima Ave and N 2nd St hosted parades and celebrations during the early 1900s. The Emporium building still remains. The Pioneer Block building on the end was replaced by the Yakima Trust building in 1920s.



Yakima Valley Museum - Postcards - Events - Blossom Festival 1912



In 2022 the Olive Garden restaurant stands where the three-story Lewis-Engle building was located.



Jo N Miles 2022

Early parades passed by E Yakima Ave and the Lewis-Engle Bldg., known for decades as the Jade Tree Restaurant. The building was demolished and eventually became the site of Cowiche Canyon Kitchen located there in 2022.



Yakima Valley Museum - Postcards - Events - Blossom Festival 1912

The remodeled fire station originally opened in 1912. It remains as a private business at the corner of S 3rd St and E Walnut.



Jo N Miles 2022



The North Yakima Fire Department headquarters opened in 1912 at 129 S 3rd St. In 2022 it still exists, occupied by small businesses.



Yakima Valley Museum 2001 800 978 - Photographs - Fire Department - by Frank P. Lanterman

What once was the Michigan Hotel and Barrel House in 1913 exist under different names in 2022.



Jo N Miles 2020



The Michigan Hotel and adjacent Barrel House buildings were constructed in 1913 and still stand at 20 - 26 N First St in 2022.



Yakima Valley Museum -2008-131-593-Postcards-Hotels- Ron Ott Collection



In 2003 St. Elizabeth hospital was sold and renamed Yakima Regional Medicine and Cardiac Care Center. In 2022 a modern hospital building stands empty where St. Elizabeth's had existed since 1913.



Jo N Miles 2022

In 1913 St. Elizabeth's Hospital was built at S 9th Ave and W Walnut St The original building was replaced by a newer hospital building on the same site in 1963.



Yakima Valley Museum - 2008-106-003- Photographs-Hospitals

Piping from the natatorium's artesian well still remains next to the car wash just east of A.C. Davis High School.



Jo N Miles 2022



The Natatorium was a swimming pool built in 1913 at 201 S 6th Ave. Owner John Clemmer used a nearby artesian well to fill the pool and for his water delivery business.



Yakima Valley Museum -2002-850-191-Photographs-Commercial Facilities-Natatorium

The City of Yakima's Lions Indoor Pool is located a block south of the original Natatorium site.



Jo N Miles 2019

The Natatorium's indoor swimming pool tank was filled with natural artesian water at 90 degrees, and emptied at the end of every day. It operated until the 1930s when Lions Pool outdoor facility was built for public use just a few yards away.





A modern Yakima Police Department complex stands where the National Guard Armory was built in 1914.



Jo N Miles 2022

The National Guard Armory was built in 1914 on S 3rd St between E Walnut and E Pine where the Yakima Police Department and city jail exist in 2022.



Yakima Valley Museum-2008-131-4120-Postcards-Military-Ron Ott Collection



None of the old buildings from 1899 remain in this 2022 street scene at the intersection of S 2nd St and E Chestnut.

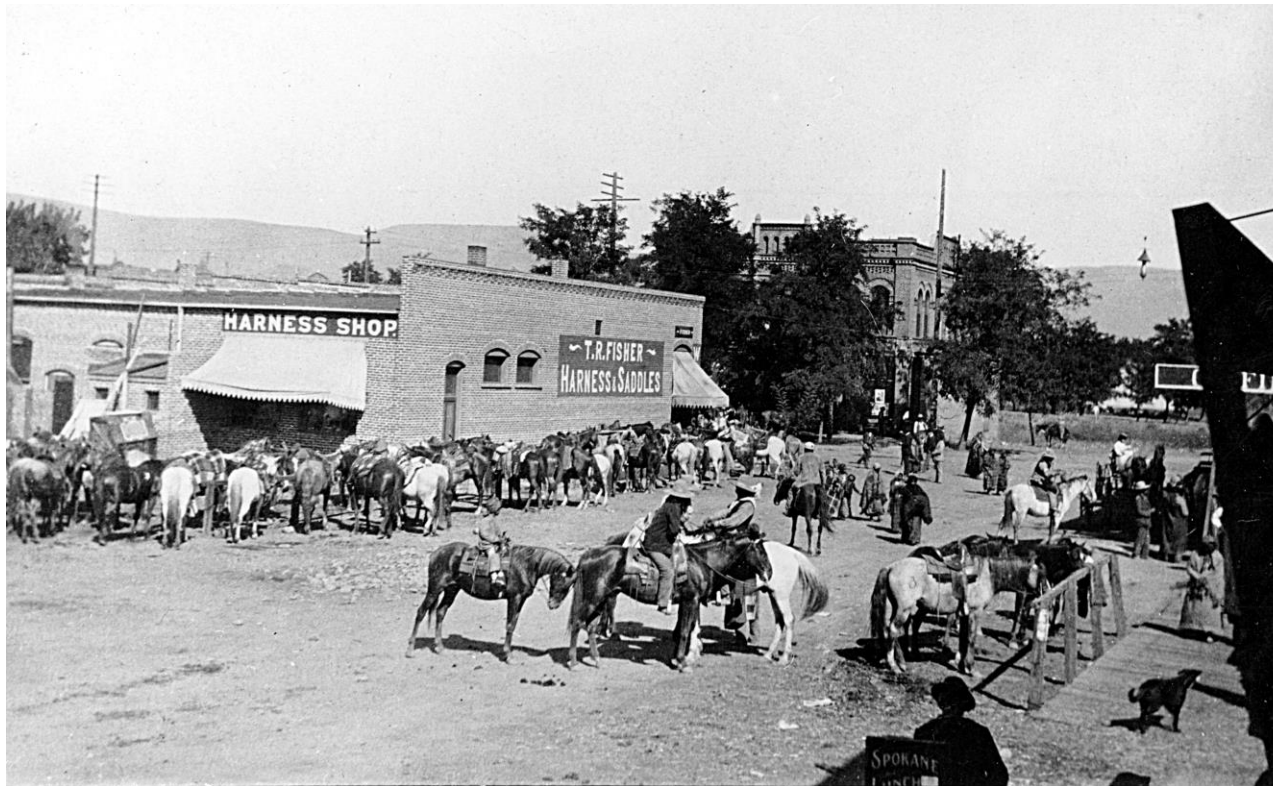


Jo N Miles 2022



As the Gilded Age came to a close in 1914, a new age began to emerge in 1915. The new age was characterized by prohibition laws, more automobiles, World War I, Spanish Influenza, and the Roaring '20s. Blacksmith shops, livery stables, and barns at schoolyards for children's horses have disappeared. However, the elegant buildings that remain more than 100 years later serve as reminders that quality of life was enjoyed long before there were airports and Internet. Because planning for the future requires understanding the past, Yakima Valley Libraries and Yakima Valley Museum have preserved these historical images and made them available to the public at Yakima Memory (<https://archives.yvl.org>).

Visitors are always welcome!



East Chestnut Street facing east toward S 2nd Street (Cadwell Building in the background) ca 1899

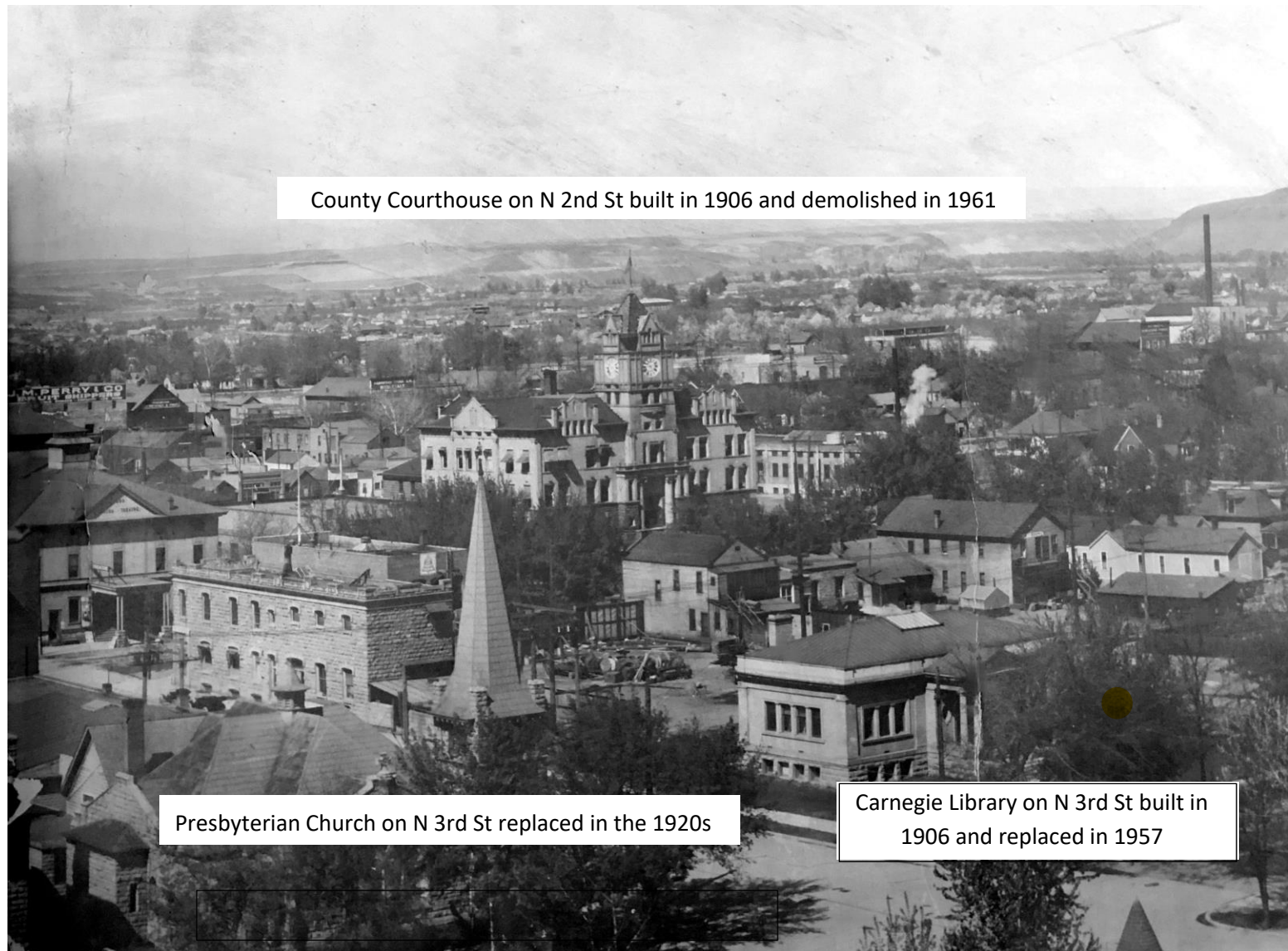
Yakima Valley Museum - 2002-801-826

Not many old buildings remain within this section of town except the 1910 depot seen in the distance.



Jo N Miles 2022

View of North Yakima, Washington 1910



Yakima Valley Museum - Oversize Photos